

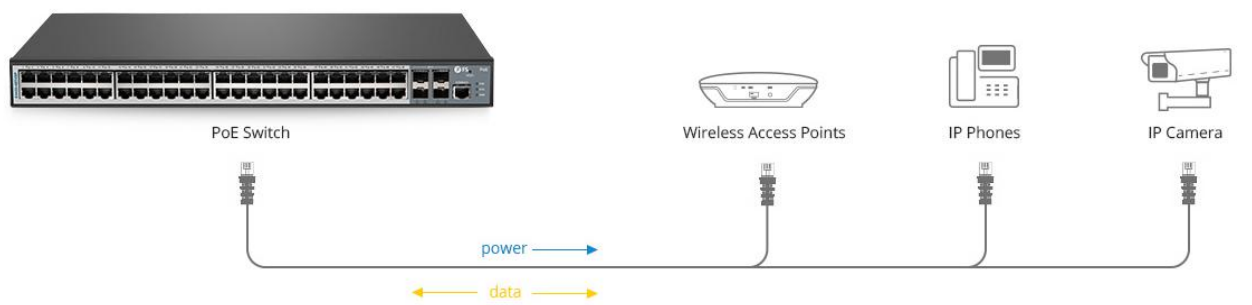
PoE+ Series Switches Typical Network Solution

Models: S1150-8T2F
S3260-8T2FP
S1400-24T4F
S3400-48T4SP

Overview

Power over Ethernet (PoE) allows network switches to transmit both power and data through an Ethernet cable at the same time. With PoE+, you can deploy network devices like Wireless AP, IP Phone and IP camera etc. into places where there is no power outlets available through a single Ethernet cable. Also, PoE+ switches are featured with QoS, VLAN, ACL functions can satisfy your requirement on network performance.

FS provides a wide range of PoE/PoE+ switches with up to 48-port fiber optic Gigabit PoE+ ports and up to 30W output per port to deliver high-speed data transmission while powering high-power devices over long distances. With FS PoE+ series switches solution, your total network infrastructure and installation costs will be lowered a lot, and you can manage power to devices like VoIP phone, camera easily.



Part Number	S1150-8T2FP	S3260-8T2FP	S1400-24T4F	S3400-48T4SP
Ports	8x 10/100/1000BASE-T RJ45	8x 10/100/1000BASE-T RJ45	24x 10/100/1000BASE-T RJ45	48x 10/100/1000BASE-T RJ45
	2x 1G SFP	2x 1G SFP	4x 1G SFP	4x 10G SFP+
PoE Standard	802.3af/at	802.3af/at	802.3af/at	802.3af/at
Power Budget	130W	240W	370W	370W
Max. Power Consumption	150W	260W	400W	400W
Max. Power Consumption Per PoE Port	30W	30W	30W	30W

Home Office Network Case Study

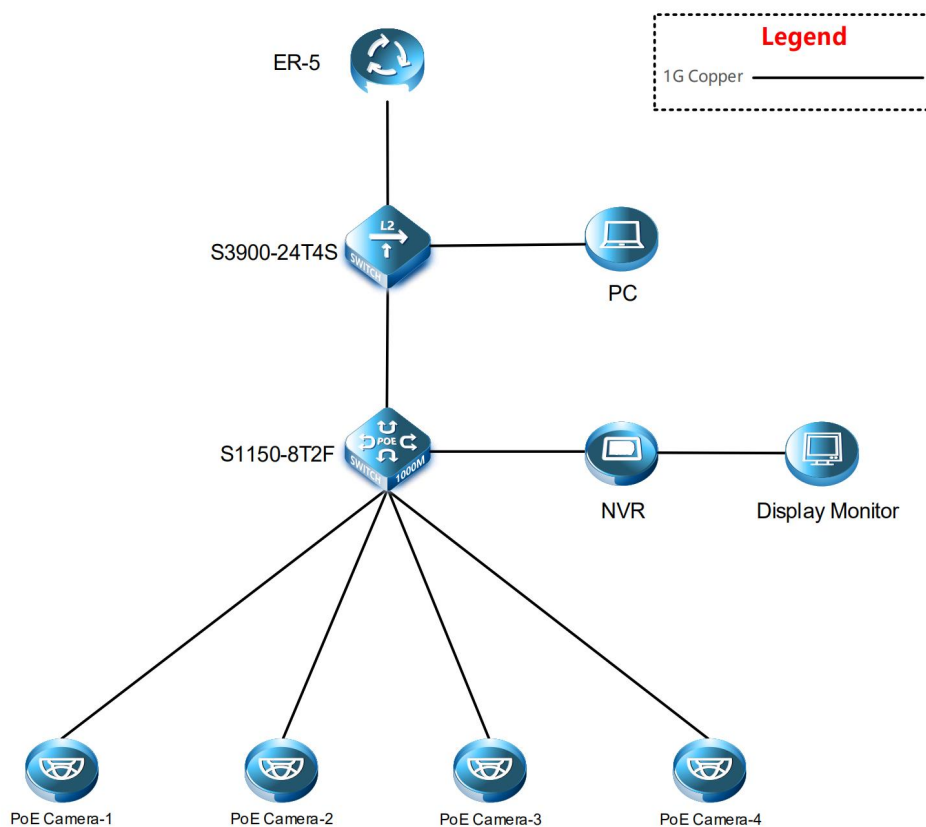
Background

Customer need a home office solution. A total of 4 cameras in 4 offices need to be powered and connected to the network. In addition to the camera, there are computers, telephones that need to be connected.

Challenge

The control room is separated from the office, and the distance between each access point is less than 100m, the remaining concern is a low-cost solution. And they don't have professional engineer to maintain network , so a simple network with high reliability is critical for them.

Solution Topology



Solution Description

In this solution, the customer needs to power four cameras. The S1150-8T2F switch supports two power supply methods, PoE (15W) and PoE + (30W), it can meet the power requirements of this scenario. With the use of PoE+ switch and S39 series switch, total cost is decreased, and network stability can be ensured,

Connection: The S1150-8T2F switch acts as an access switch and connects to the upstream S3900-24T4S through the SFP port to transmit data signals.
The S1150-8T2F switch connects the PD terminal camera and the NVR for power supply. NVR and camera work together to complete video recording, storage and forwarding .

Management: Use a simple direct connection method to connect the access switch, PC and multiple cameras, with simple operation and low maintenance costs. If you need to increase the number of cameras later, you only need to use copper cables to directly connect to the PoE switch.

Product List

ID	Description
72944	S3900-24T4S Fanless 24-Port 10/100/1000BASE-T Gigabit Stackable Managed Switch with 4 10Gb SFP+ Uplinks
73457	S1150-8T2F 8-Port Gigabit PoE+ Managed Switch with 2 SFP, 150W
72941	5-Port Gigabit VPN Router
70555	3ft (0.9m) Cat5e Snagless Unshielded (UTP) PVC CM Ethernet Network Patch Cable, Blue

Resort/Hotel Project Network Solution Case Study

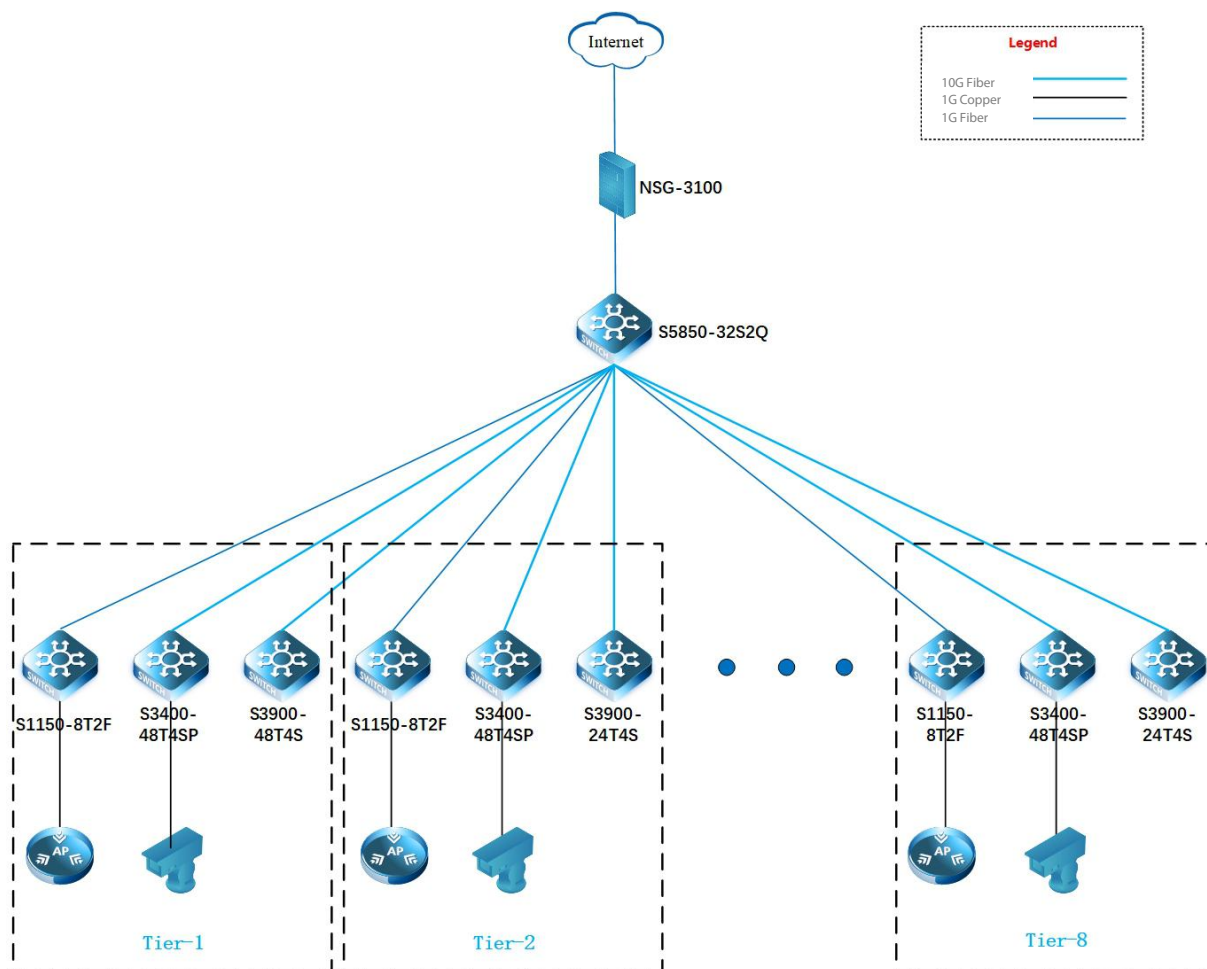
Background

A client recently had a large resort project that required a comprehensive network solution. There are 8 tiers with a total of about 600 interconnection points, including CCTV camera, WAP, LOT and door access control need to be accessed.

Challenge

At every tier, he prefers to have all the cameras on the same switch, and other network equipment on a different switch. PoE should provide power to cameras and WAP.

Solution Topology



Solution Decription

This solution is mainly composed of the cost-effective S39 series and PoE series switches, which is a good choice for customers with less budget.

The structure is simple, easy to install and maintain. Each site is directly connected to the central node. once there is a failure occurs, it is easy to detect and isolate, the faulty site can be deleted from the system in a fast time.

Connection:

S1150-8T2F / S3400-48T4SP: According to the number of CCTV cameras and other cameras on each floor, as well as the need that all cameras on each floor to be connected to the same PoE+ switch, we recommend POE+ switches 150w and 400w PoE switches.

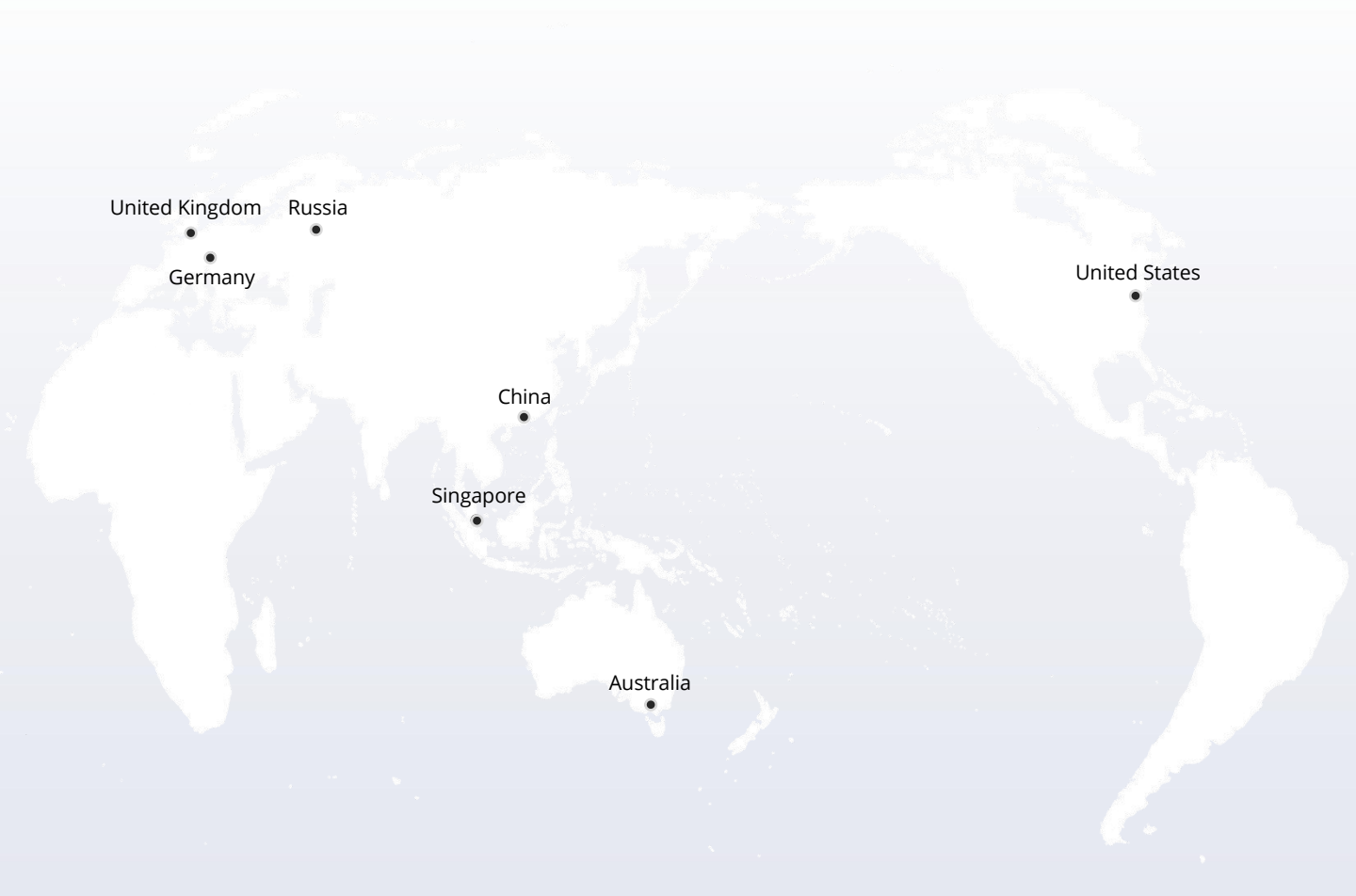
S5850-32S2Q: 32* 10G ports are connected to S3400 and S3900 respectively, the 10G ports can also be reduced to 1G and then connect to S1150 switch.

NSG-3100: The firewall serves as a network security gate to ensure the security of the entire network.

Product List

ID	Description
90593	NSG-3100 Next-Generation Firewall for Medium-sized Enterprises and Data Centers
29122	S5850-32S2Q 32-Port 10Gb SFP+ L2/L3 Data Center Leaf Switch with 2 40Gb QSFP+ Uplinks
73457	S1150-8TSF 8-Port Gigabit PoE+ Managed Switch with 2 SFP, 150W
90132	S3400-48T4SP 48-Port Gigabit PoE+ Managed Switch with 4 SFP+, 400W
72946	S3900-48T4S 48-Port 10/100/1000BASE-T Gigabit Stackable Managed Switch with 4 10Gb SFP+ Uplinks
72944	S3900-24T4S Fanless 24-Port 10/100/1000BASE-T Gigabit Stackable Managed Switch with 4 10Gb SFP+ Uplinks
84028	3000Mbps 4x4 MU-MIMO Tri-Band FAT/FIT Gigabit Access Point
11774	Cisco GLC-SX-MM Compatible 1000BASE-SX SFP 850nm 550m DOM Transceiver Module
11552	FS for Cisco SFP-10G-SR Compatible, 10GBASE-SR SFP+ 850nm 300m DOM Transceiver Module (Standard)
74386	Customized Length LC UPC to LC UPC Duplex OM3 Multimode PVC (OFNR) 2.0mm Fiber Optic Patch Cable
70555	3ft (0.9m) Cat5e Snagless Unshielded (UTP) PVC CM Ethernet Network Patch Cable, Blue

NOTE: If you have any questions or requirements, please contact FS technician team or your Account manager for personalized services: https://www.fs.com/solution_support.html



 <https://www.fs.com>



The information in this document is subject to change without notice. FS has made all efforts to ensure the accuracy of the information, but all information in this document does not constitute any kind of warranty.