

Wireless Devices Reset and Recovery System Configuration Guide

Models: AC-224AP; AP-W6T10000C; AP-W5T2600C; AP-W6T10000C; AP-W6Q4134C;
AP-W6T3267C; AP-W6D1775C

Contents

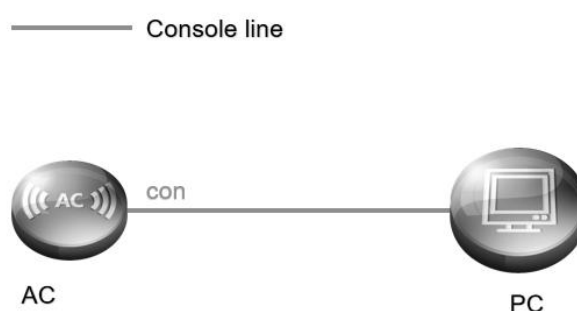
1. Clear the Device Password	1
1.1 Networking Requirements	1
1.2 Network Topology	1
1.3 Configuration Steps	1
1.3.1 U-boot Save Configuration and Reset Password.....	1
1.3.2 Wireless Thin AP Password Recovery (Restore Factory Settings).....	2
1.3.3 Wireless Fat AP Password Recovery.....	2
2. Wireless Device Factory Reset	3
2.1 Networking Requirements	3
2.2 Network Topology	3
2.3 Configuration Steps	3
2.3.1 AC Controller Restore Factory Settings.....	3
2.3.2 Fat AP Factory Reset.....	3

1. Clear the Device Password

1.1 Networking Requirements

- (1) If the administrator forgets the login password and cannot enter the configuration mode for configuration, then you need to use the Console line to enter the CTRL layer for password recovery.
- (2) To do password recovery, you need to prepare the configuration line (console line). During the password recovery process, you need to restart the device to complete the operation at the CTRL layer.
- (3) During the password recovery process, pay attention to rename the file, do not choose to delete the file, otherwise the configuration will be lost.

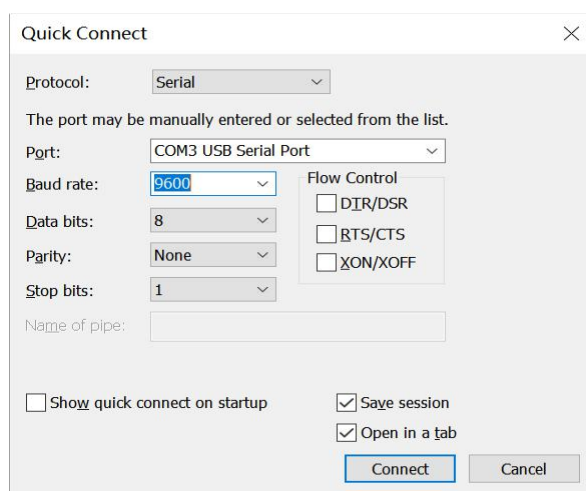
1.2 Network Topology



1.3 Configuration Steps

1.3.1 U-boot Save Configuration and Reset Password

Log in to the CLI interface of the switch, connect the console port of the switch with a console cable, open the hyper terminal CRT, and set related parameters.



Manually power off and restart the device. When prompted by Ctrl+C, press the Ctrl key C key on the keyboard at the same time to enter the u-boot interface.

```
===== BootLoader Menu("Ctrl+Z" to upper level) =====
```

```
TOP menu items.
```

```
*****
```

- 0. Tftp utilities.
- 1. XModem utilities.
- 2. Run main.
- 3. SetMac utilities.
- 4. Scattered utilities.
- 5. Set backplane info

```
*****
```

Press a key to run the command:

Press Ctrl+q, enter `main_config_password_clear`, and wait for the device to restart before proceeding to the device

```
AC-224AP#main_config_password_clear
```

Note: After entering the CLI command line interface, if there is no button, the password is required when entering again. The default timeout is 10min, please change the password in time before timeout.

1.3.2 Wireless Thin AP Password Recovery (Restore Factory Settings)

For the thin AP, it has been launched on the AC. You can restore the AP to the factory settings on the AC. For thin APs, the configuration of the AP is stored on the AC, and there is no password recovery operation for the thin AP. Here is a method for the AP to restore the factory operation on the AC.

Log in to the AC to perform operations:

```
AC(config)#ac-controller
```

```
AC(config-ac)#factory-reset ap-name ----->Use show ap-config summary to see the ap name
```

Note: 1. After performing this operation, the AP regrets the automatic restart and completes the action of restoring the factory.

2. Restoring the factory will change the AP back to the factory configuration. If the AP is a statically configured IP address, you need to configure it again manually.

1.3.3 Wireless Fat AP Password Recovery

Restart the wireless device (the device is powered off and on again). After the device is powered on, immediately press the keyboard Ctrl+C key to enter the ROM layer

```
===== BootLoader Menu("Ctrl+Z" to upper level) =====
```

```
TOP menu items.
```

```
*****
```

- 0. Tftp utilities.
- 1. XModem utilities.
- 2. Run main.
- 3. SetMac utilities.
- 4. Scattered utilities.

```
*****
```

Press a key to run the command:

After entering the bootloader menu, enter ctrl+q at the same time, enter the uboot command line, in the uboot command line state, enter the command `main_config_password_clear`

```
Bootloader # main_config_password_clear
```

The device will automatically start, the main program, print log

```
NAND read: device 0 offset 0x600000, size 0x200000
```

```
2097152 bytes read: OK
```

```
Check master boot OK.
```

```
NAND read: device 0 offset 0x200000, size 0x200000
```

```
2097152 bytes read: OK
```

```
Check backup boot OK.
```

```
NAND read: device 0 offset 0x2f00000, size 0x800000
```

```
8388608 bytes read: OK
```

No password is required to enter the configuration CLI command line interface

```
AP>enable
```

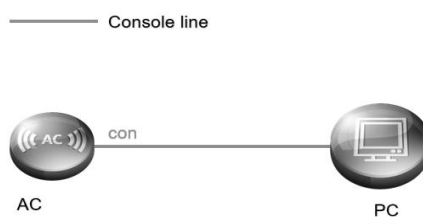
```
AP#configure terminal
```

2. Wireless Device Factory Reset

2.1 Networking Requirements

Restore wireless device (AC or AP) to factory settings

2.2 Network Topology



2.3 Configuration Steps

2.3.1 AC Controller Restore Factory Settings

Delete the configuration file config.text ap-config.text

```
AC#delete config.text
```

```
Are you sure you want to delete "config.text"? [Yes/No]y
```

```
AC#delete ap=config.text
```

```
Are you sure you want to delete "ap-config.text"? [Yes/No]y
```

```
AC#reload
```

```
Proceed with reload?[no]y
```

2.3.2 Fat AP Factory Reset

(1)After the device is powered on and running normally, use a small broken needle, insert the reset hole and press for more than 3 seconds (generally press for 5-8 seconds), the device can automatically restore the factory settings.

(2)Or log in to the AP device to use the command

```
AP(config)#apm factory-reset
```



 <https://www.fs.com>



The information in this document is subject to change without notice. FS has made all efforts to ensure the accuracy of the content, but all information in this document does not constitute any kind of warranty.