

S58 Series Web Login Guide

Contents

1 Web Login Summary.....	2
1.1 Overview.....	2
1.2 Management IP/ Route Configuration.....	2
1.3 User Configuration.....	3
1.4 Http Configuration.....	3
1.5 Web Login.....	4

1 Web Login Summary

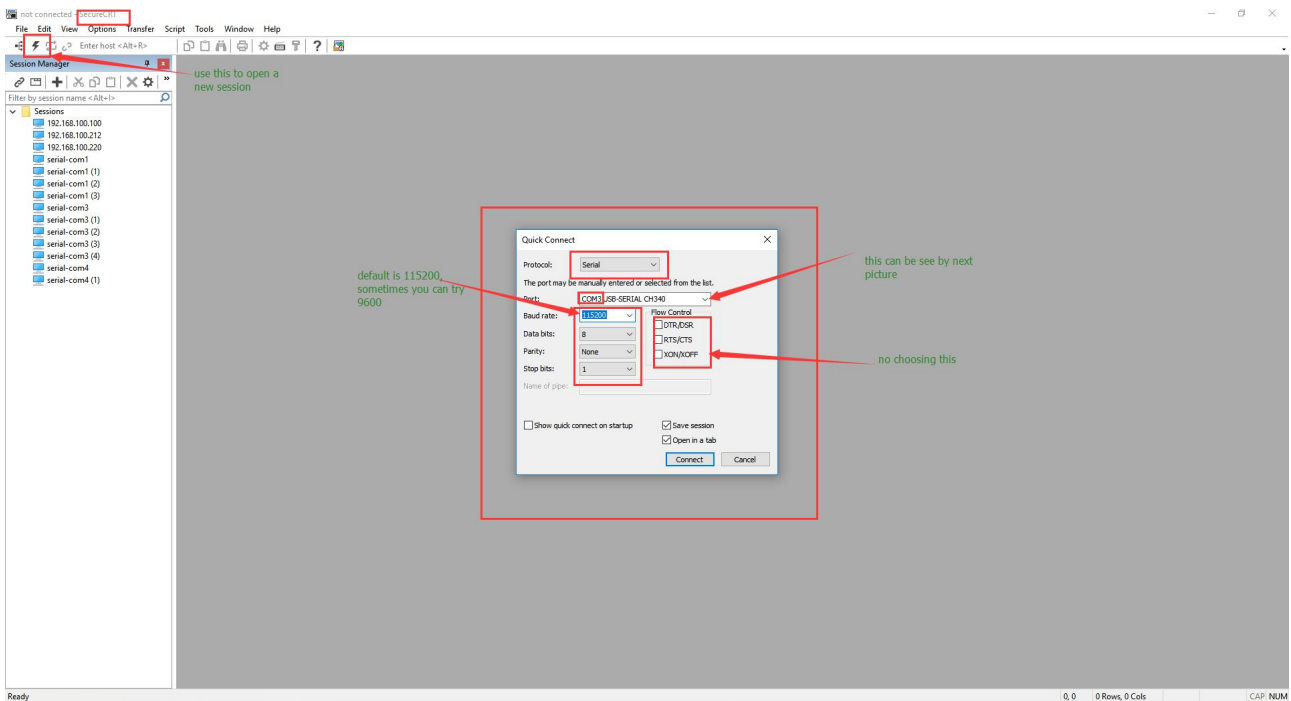
1.1 Overview

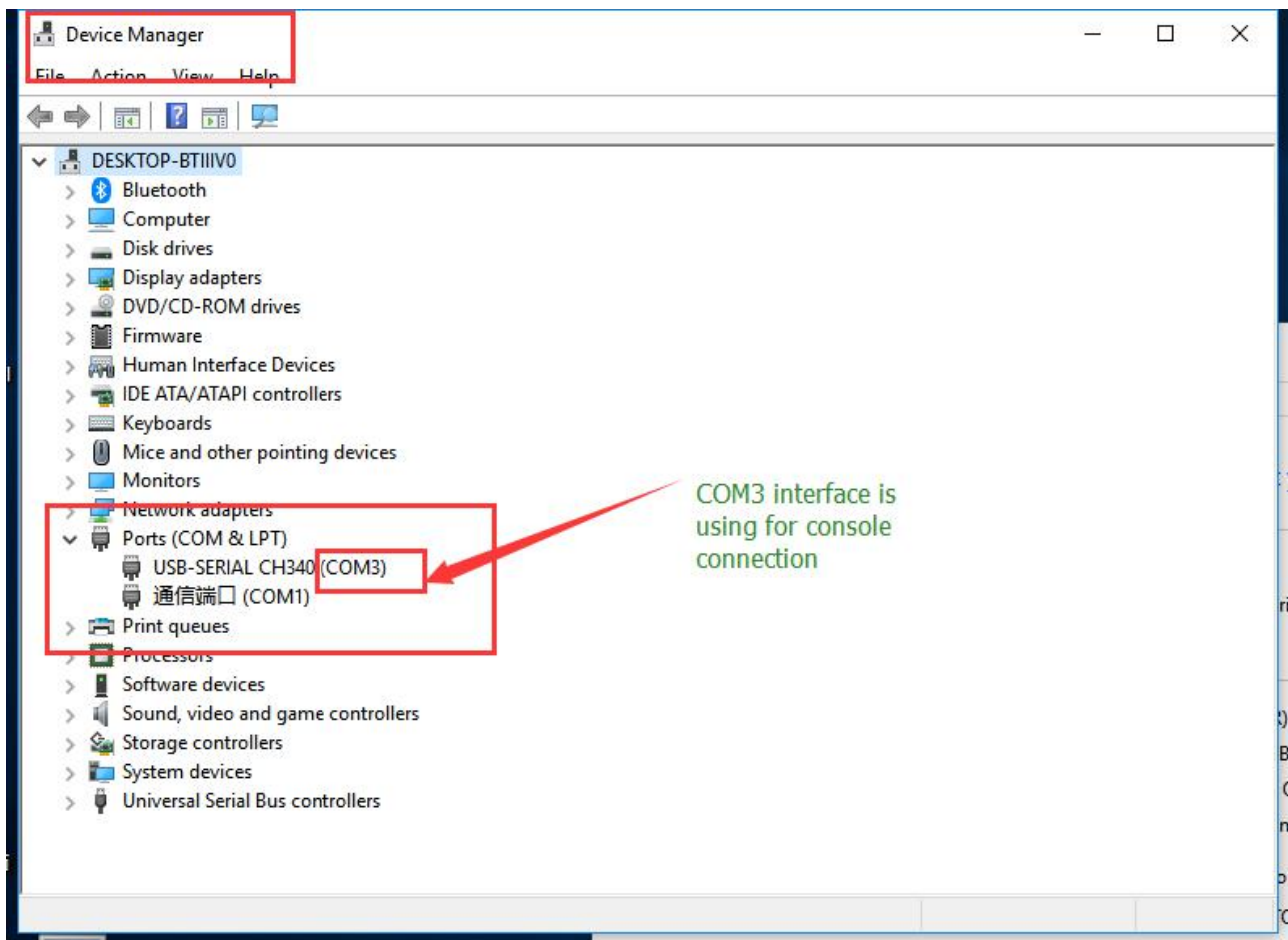
This chapter describes how to configure the switch to support logging in by HTTP.

1.2 Management IP/ Route Configuration

Before Web network management, user should configure the management IP and route by CLI on switch, first connect the computer and switch with a console line, and then enter the switch to configure the commands.

The default login user name of the S58 series is admin, and the password is admin, The baud rate is 115200.





Set management ip address:

```
management ip address 10.10.38.2/23
```

```
management route add gateway 10.10.39.254
```

1.3 User Configuration

User should add logging user by CLI before access switch by HTTP.

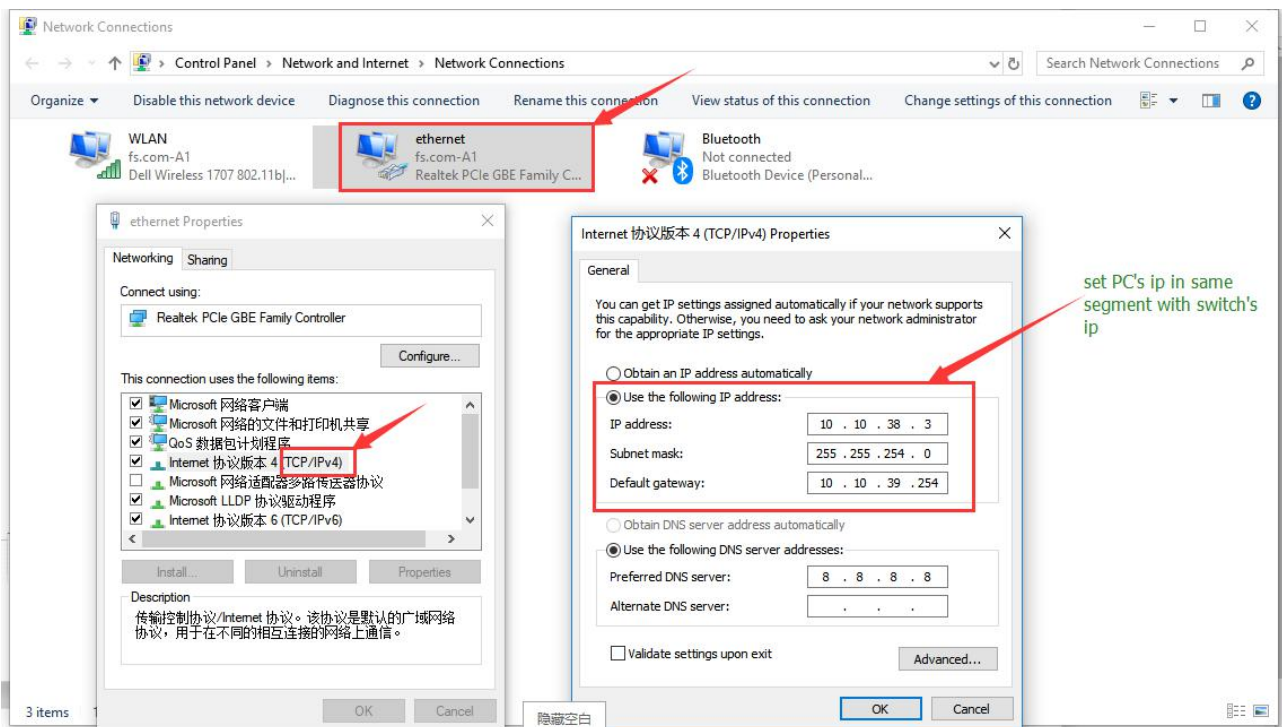
For example:

```
username admin privilege 4 password admin
```

1.4 Http Configuration

- Step 1

Set the computer' ip to the same network segment as the switch management ip



- Step 2

Use tftp or ftp to copy web image to the flash:

```
copy mgmt-if tftp://10.10.38.3/webImage.bin flash:/webImage.bin
```

- Step 3

Load web image:

```
http server load flash:/webImage.bin
```

- Step 4

Enable HTTP service for web network management :

```
service http enable
```

1.5 Web Login

- Step 1

Open Google Chrome browser, input address field with URL (Universal Resource Locator) address of the switch.

- Step 2

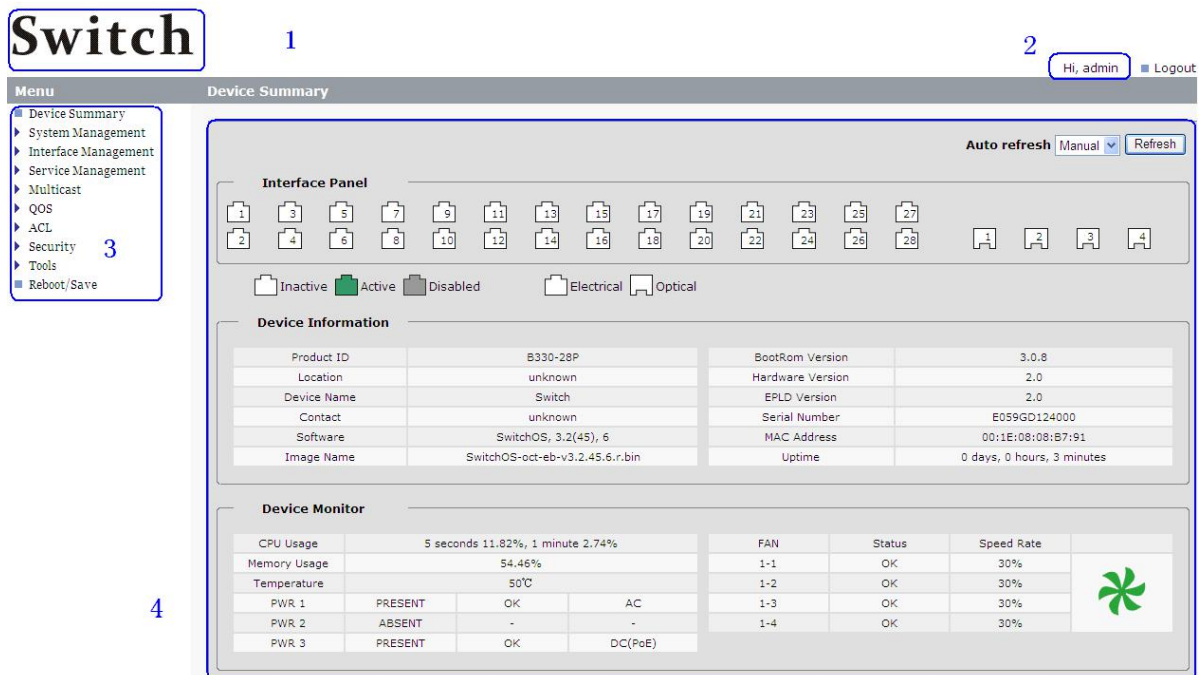
Enter username and password which user created with CLI, the login page is shown as the figure below.



The login page features a title 'Login' at the top. Below it are two input fields: 'Username:' and 'Password:'. A 'Login' button is positioned at the bottom center of the form.

Figure 1-1: Login page

- Step 3 Enter the main page.



The main page is titled 'Switch' and includes a navigation menu on the left. The main content area is divided into several sections: 'Interface Panel' with a grid of 28 numbered interface icons; 'Device Information' with a table of system details; and 'Device Monitor' with a table of performance metrics. A 'Menu' sidebar on the left contains items like 'Device Summary', 'System Management', 'Interface Management', 'Service Management', 'Multicast', 'QOS', 'ACL', 'Security', 'Tools', and 'Reboot/Save'. The top right shows a user 'Hi, admin' and a 'Logout' link. A 'Refresh' button is also present in the top right of the main content area.

Figure 1-2: Main page

Parameter usage

Parameter Item	Instructions
1	The picture of logo
2	The name of the user
3	Navigation area
4	Operating area