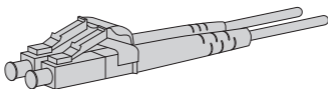


ULTRA HD FIBER CABLES

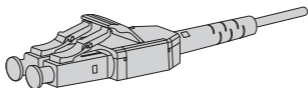
Quick Start Guide **V1.0**

1

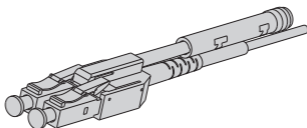
Product View



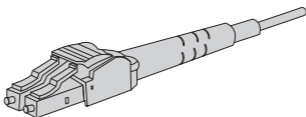
Ultra Low Loss LC



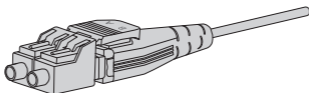
Standard Clip LC Uniboot



Push-pull LC Uniboot



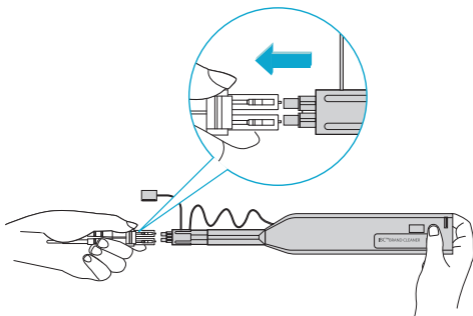
LC Uniboot (Polarity Reversible)



Flat Clip LC Uniboot (Polarity Reversible)

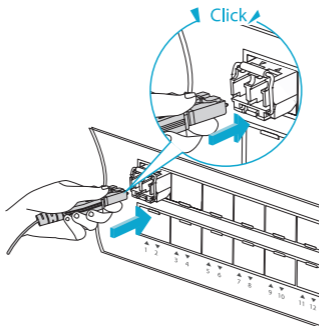
2

Clean LC Duplex Connectors with US Conec IBC™ Brand LC² Cleaner

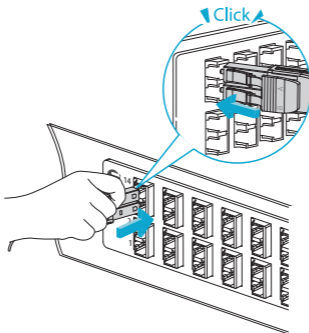


3

Install the LC Connector into Transceiver Module



Install the LC Connector into Adapter

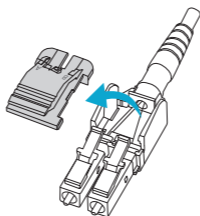


NOTE:

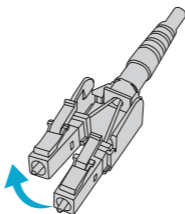
1. When installing, align the key on the connector body with the keyway on the transceiver or adapter.
2. In high-density fiber cabling data centers, the tool #105341 is recommended for inserting and extracting fiber connectors.

4

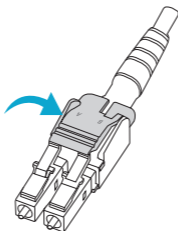
Polarity Reversal of LC Uniboot



Open connector top



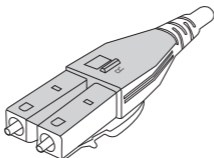
Switch the polarity from A-B to A-A



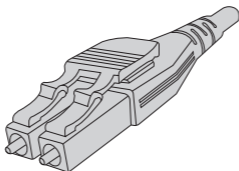
Close connector top

5

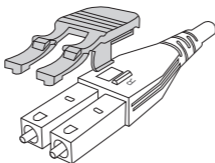
Polarity Reversal of Flat Clip LC Uniboot



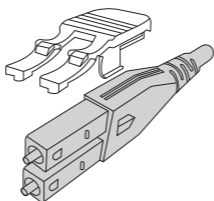
Unlock the latch from the back



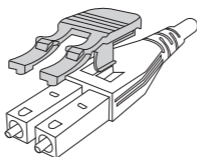
Rotate the connector to the front



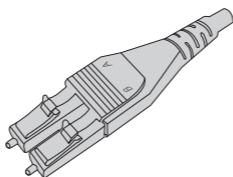
Extract the clip



Rotate the connector body 180°



Reposition the clip



The polarity is reversed

