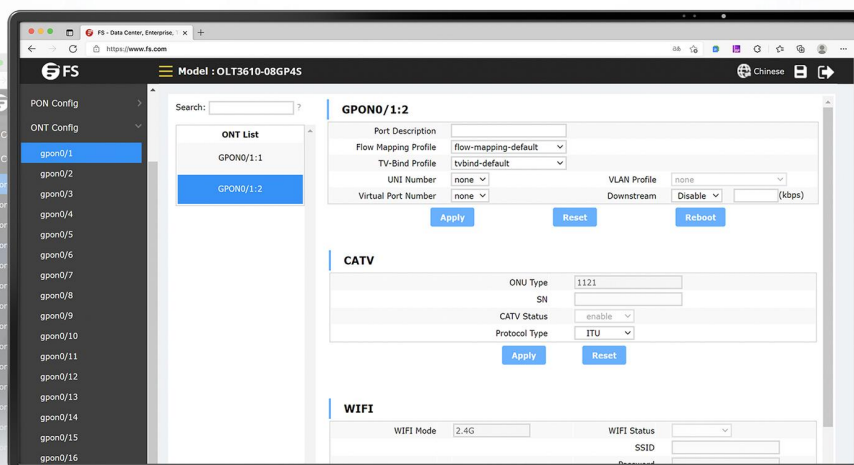


# TA1710-4G-P User Manual



## Contents

1. TA1710-4G-P User Manual.....	1
1.1 Introduction.....	1
1.2 Hardware Connection.....	1
1.3 Computer Setting.....	2
1.4 Wizard Setting.....	5
1.5 System Settings.....	6
2. Warranty Statement.....	8
3. Warranty Certificate.....	9

# 1. TA1710-4G-P User Manul

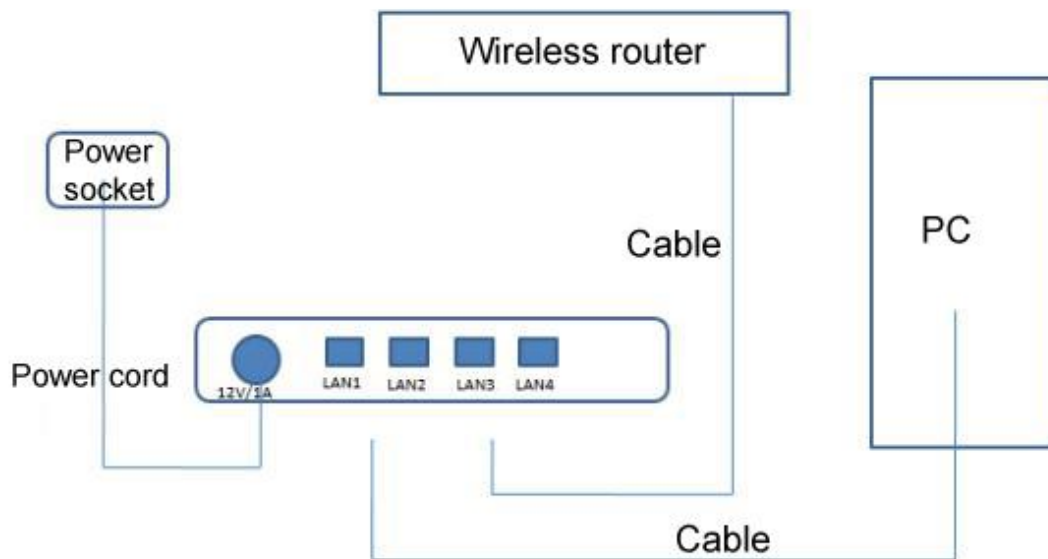
## 1.1 Introduction

TA1710-4G-P is a high-end integrated broadband access device that is flexible and user-friendly. It can provide high-performance broadband access services for home users and individual businesses.

Its main characteristics:

- Comply with ITU-T G.984/988 standard and adopt GPON uplink;
- Set and monitor the device through the WEB page;
- Remote configuration and management through OMCI;
- Provide security performance for your device with MAC filter function;

## 1.2 Hardware Connection



Check the indicator status after connection.

Abbrev.	Name	Color	Description
SYS	System indicator	Green	Flicker: The system is normal. On/Off: The system is abnormal.
PWR	Power indicator	Green	On: The system is powered on normally. Off: The system is not powered on.

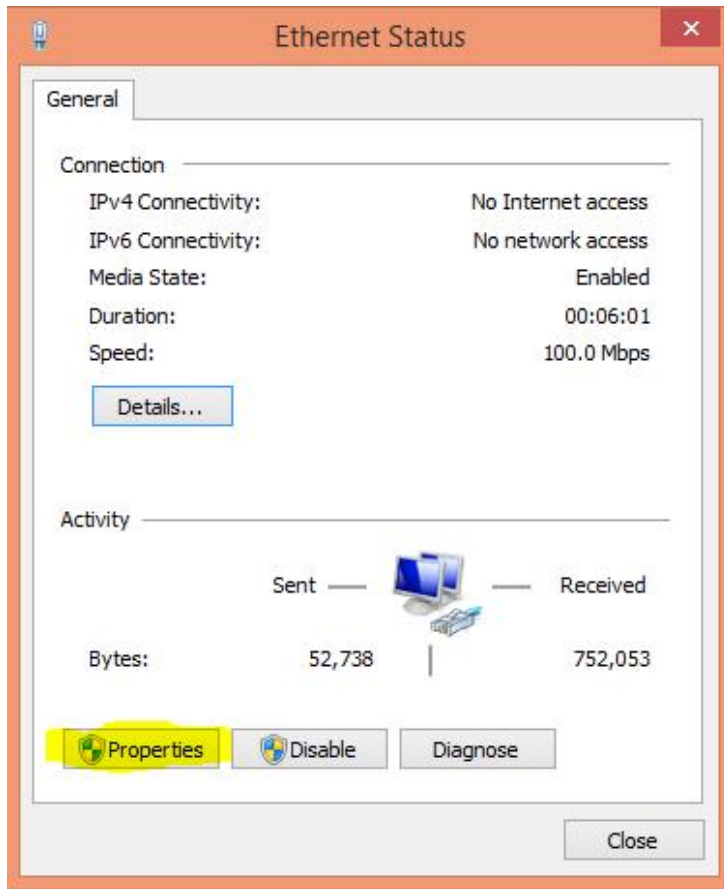
LINK	PON registration indicator	Green	Off: The received optical power is too low or no optical power is received. On: The ONU is normally registered. Flicker: The ONU is being registered.
LOSS	Optical signal indicator	Red	Off: The ONU normally receives optical power. Flicker: The optical power received by the ONU is lower than the threshold of the optical receiver.
LAN1~4	Ethernet interface status indicator	Green	Off: The system is not powered on or the Ethernet port does not connect to the terminal; On: The Ethernet port has been connected, but there is no data transmission. Flicker: There is data transmission.
POE1~4	POE status indicator, located at the network port	Green	Off: No PD device is connected; On: The PD device has been connected and powered normally. Flicker: The PD device has been connected and is in power negotiation.

Note: If the indicator does not work well, please check whether the connection is correct. Warning:

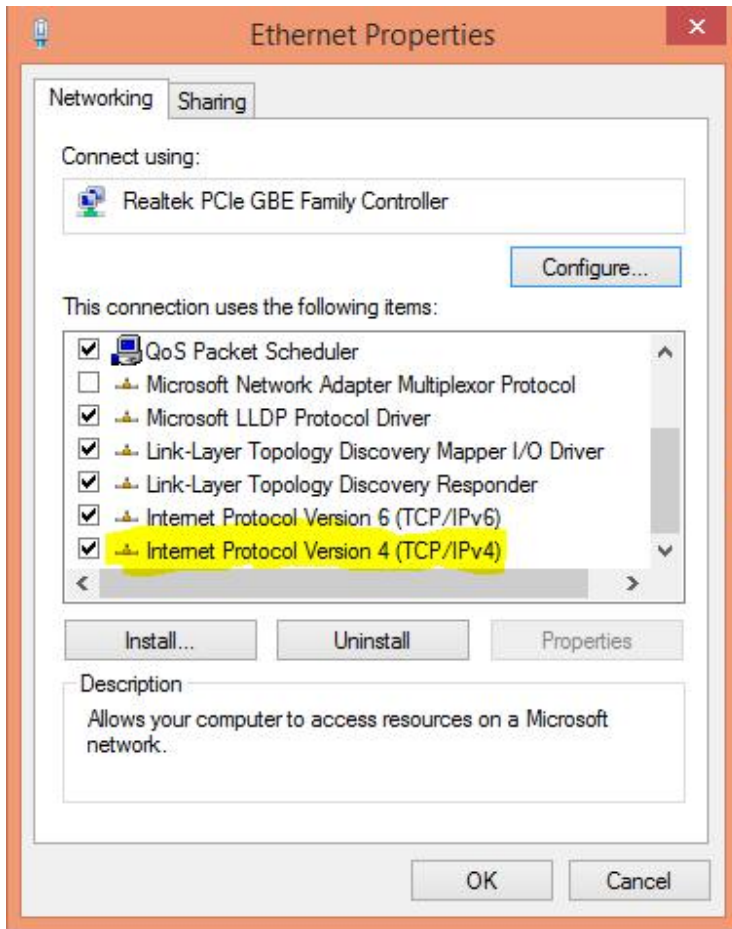
- 1) Make sure the device is put on a horizontal and flat surface.
- 2) To avoid thunder-strike, disconnect all power lines from the power supply in thunder and rainy days.
- 3) Make sure that the workshop is well-ventilated, the heat of electrical devices is well-discharged and sufficient air circulation is provided for device cooling.
- 4) Use the rated power adapter equipped with the device.

### 1.3. Computer Setting

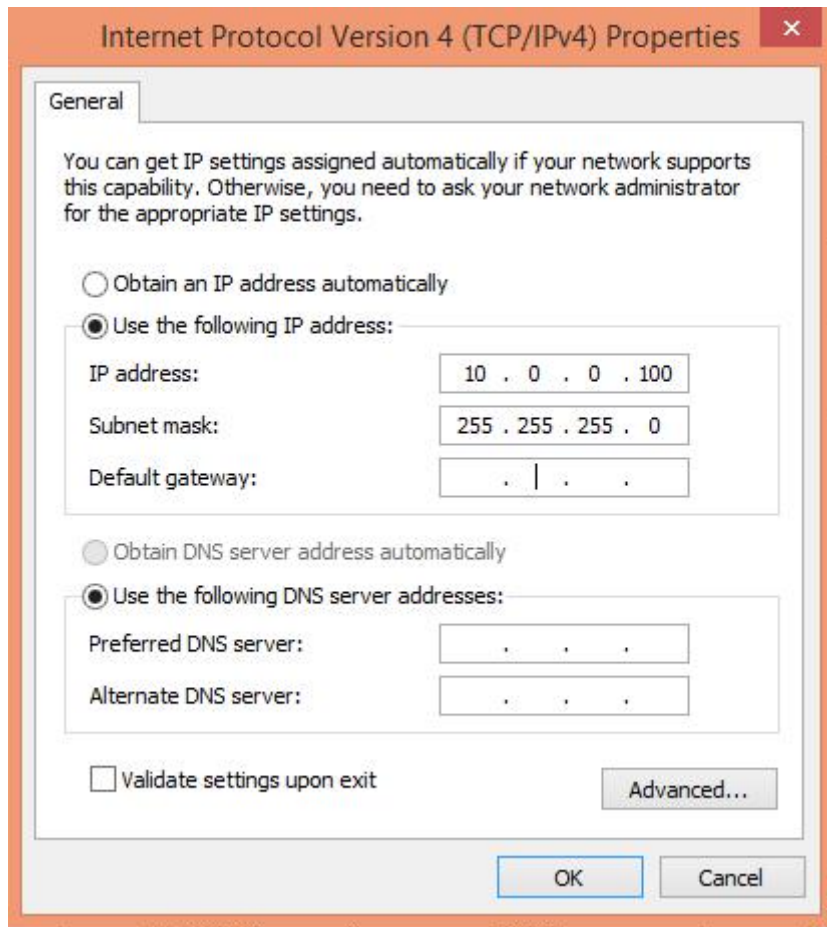
- 1) Click "Start → Control Panel → Network and Internet → Network and Sharing Center → Local Area Connection", select "Local Area Connection", and click "Properties".



2) Double click "Internet Protocol 4 (TCP/IPv4)" as shown in the following figure:



3) On the page of Internet Protocol 4 (TCP/IPv4) Properties, select “Use the following IP address:” and “Use the following DNS server addresses:”, and then configure the same network segment address as the ONU (such as 10.0.0.100, etc.), and the subnet mask is 255.255.255.0.




## 1.4. Wizard Setting

- 1) Open the web browser, for instance: IE.



- 2) Enter **10.0.0.10** in the address bar and click "Enter" to the the web interface.

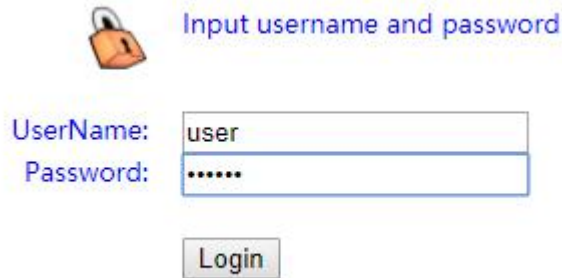


Input username and password

UserName:

Password:

- Then enter the **UserName** (**user** by default) and **Password** (**123456** by default) respectively in the interface UserLogin. For security, after logging in for the first time, it is recommended that you modify the default login password.



Input username and password

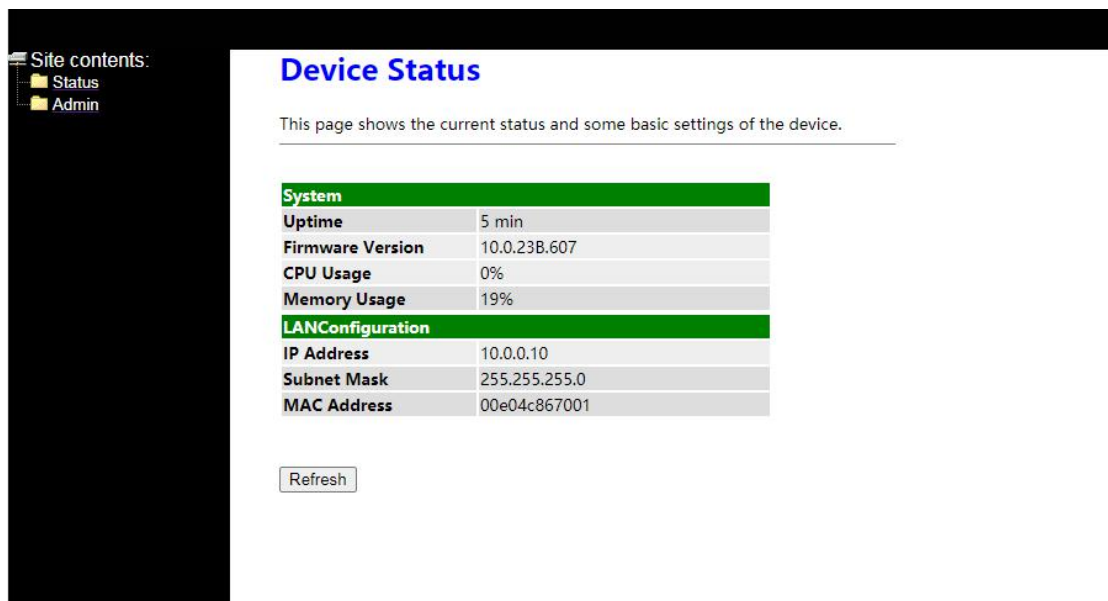
UserName:

Password:

Login

## 1.5. System Settings

- Enable the ONU interface, and click Status and device to check the basic information of the device.



Site contents:

- Status
- Admin

### Device Status

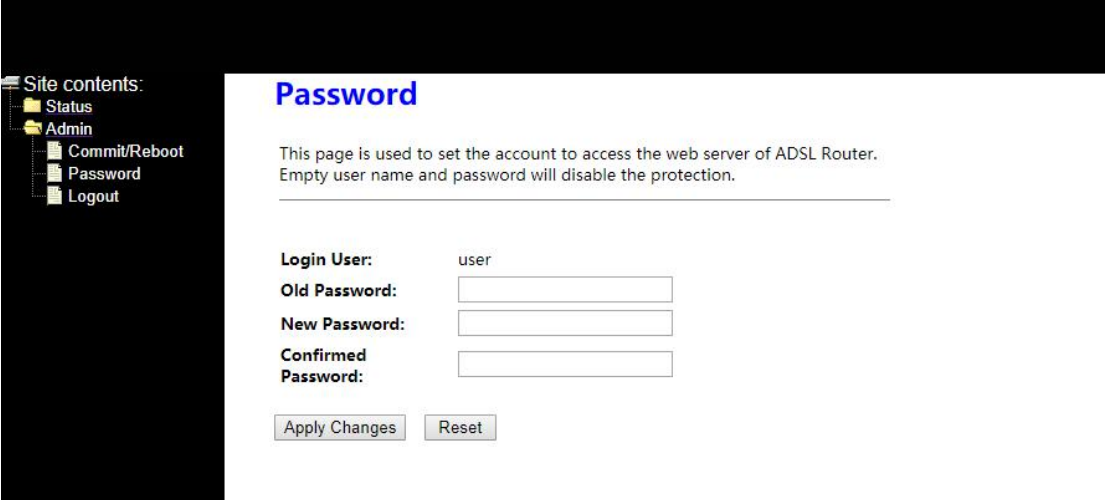
This page shows the current status and some basic settings of the device.

System	
Uptime	5 min
Firmware Version	10.0.23B.607
CPU Usage	0%
Memory Usage	19%
LANConfiguration	
IP Address	10.0.0.10
Subnet Mask	255.255.255.0
MAC Address	00e04c867001

Refresh

- Click Admin and Password. You can set user and password on WEB interface. Click **Apply Changes**.





**Site contents:**

- Status
- Admin
  - Commit/Reboot
  - Password
  - Logout

## Password

This page is used to set the account to access the web server of ADSL Router. Empty user name and password will disable the protection.

\_\_\_\_\_

**Login User:** user

**Old Password:**

**New Password:**

**Confirmed Password:**

The default user name is user and the password is 123456.

### Reset

Please reset your router if you forget its username and password. Reset method: Keep your router powered on and press the reset key "RESET" with a toothpick or a clip for 10 seconds and the router will reboot.

### Caution:

The configuration parameters of the router will return to the default setting after reset. Please re-configure your router as your requirement.

## 2. Warranty Statement

Warrants that FS's products contained in the original packaging against defects in materials and workmanship when used normally according to FS published specifications for a period of 1 year from the date of purchase as stated on your proof-of-purchase. The warranty is subject to following conditions:

- 1) The **Warranty Certificate** takes effect after being stamped by FS or the authorized distributor.
- 2) The **Warranty Certificate** is non-replicable and irrevocable, and there is no copy provided.
- 3) Should the product prove to be defective within the warranty period, return the product with its **Warranty Certificate** and sales invoice with its Serial Number, and FS will, at its option, repair or replace the product, to whatever extent FS deems necessary to restore the product to proper operating condition, without any charge to you.

The warranty does not cover damages to the product caused by:

- 1) shipping or handling or other physical abuse of the product;
- 2) repair or service to the product by anyone other than FS or technicians without FS's authorization;
- 3) using the equipment in an environment not meeting the product requirements;
- 4) force majeure, such as thunder, floods or abnormal voltage;
- 5) misapplication, misuse or inappropriate maintenance;
- 6) natural wear and tear in use, such as worn-out hull and power supply;
- 7) inconformity of serial number on the warranty certificate and the product, or the altered warranty certificate.

FS offers a paid maintenance service to the product out of warranty. If maintenance service is needed, please contact our local maintenance teams or call on our technical service hot line. FS reserves the rights to final interpretation of the Product Warranty.

## 3. Warranty Certificate

Dear customer, thank you for choosing FS products. For better service, please fill in the following **Warranty Certificate** and keep it well.

Customer name	
Client address/Zip Code	
Phone number	
Model	
Serial number	
Date of Purchase	
Invoice No.	
Sales representative	
Sales address/Phone number	

The **Warranty Certificate** is non-replicable and irrevocable, please keep your Warranty Certificate safe.

Distributor: (stamp)

## Trademark Notice

Other trademarks, product, service and company names mentioned are the property of their respective owners.

## Disclaimer

Please note that the manual shown here are for reference purposes only. It does not constitute a legal contract or a commitment between FS and any person or entity. Although every effort has been made to ensure all the information in this manual is correct, inaccuracies or typographical errors may still occur. In no event shall FS be responsible or liable, directly or indirectly, for any damage or loss caused or alleged to be caused by or in connection with the manual.

FS reserves the right to alter, update and otherwise change the information contained in the manual from time to time without notice.