

Port Mirroring Configuration

Model: S5900-24S4T2Q

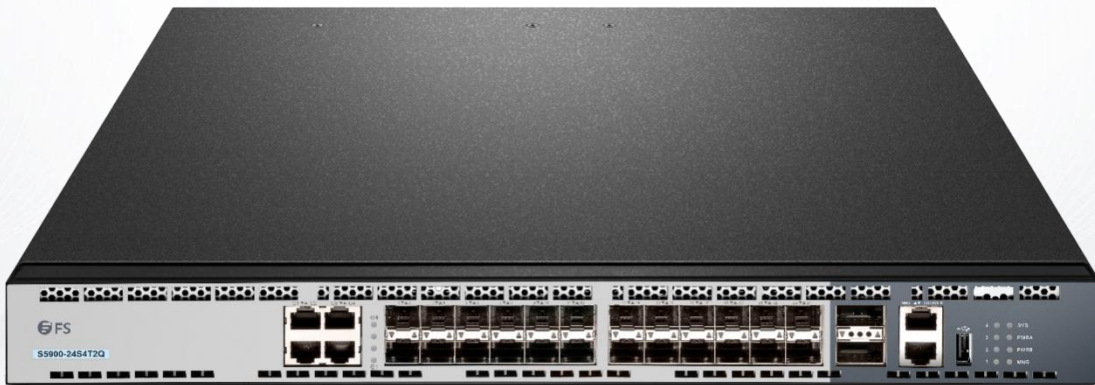


Table of Contents

1. Configuring Port Mirroring	1
1.1 Configuring Port Mirroring Task List.....	1
1.2 Configuring Port Mirroring Task.....	1
1.2.1 Configuring Port Mirroring.....	1
1.2.2 Displaying Port Mirroring Information.....	1

1. Configuring Port Mirroring

1.1 Configuring Port Mirroring Task List

- Configuring port mirroring
- Displaying port mirroring information

1.2 Configuring Port Mirroring Task

1.2.1 Configuring Port Mirroring

Through configuring port mirroring, you can use one port of a switch to observe the traffic on a group of ports.

Enter the privilege mode and perform the following steps to configure port mirroring:

Command	Description
configure	Enters the global configuration mode.
mirror session session_number {destination {interface interface-id} source {interface interface-id [, -] rx}}	Configures port mirroring. session-number is the number of the port mirroring. destination is the destination port of the mirroring. source is the source port of mirroring. rx means the input data of mirroring.
exit	Enters the management mode again.
write	Saves the configuration.

1.2.2 Displaying Port Mirroring Information

Run show to display the configuration information of port mirroring.

Command	Description
show mirror [session session_number]	Displays the configuration information about port mirroring. session-number is the number of the port mirroring.