

Port Additional Characteristics Configuration

Model: S5900-24S4T2Q

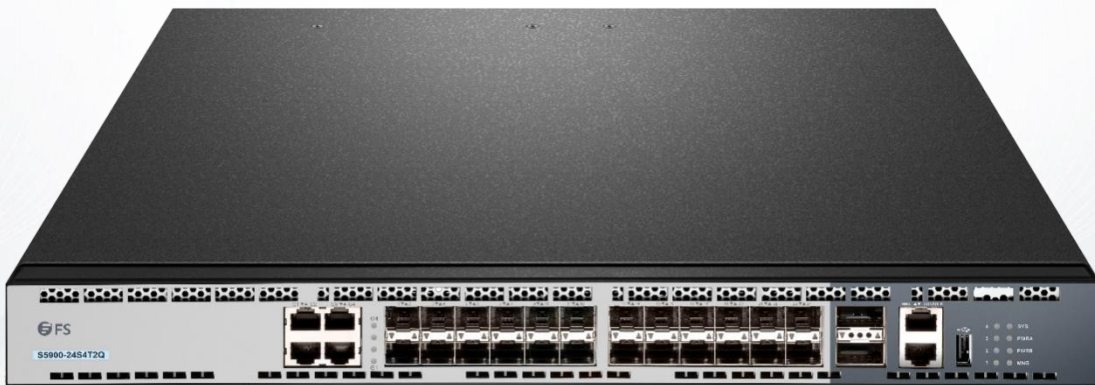


Table of Contents

1. Interface Configuration.....	1
1.1 Configuring the Ethernet Interface.....	1
1.1.1 Configuring Flow Control for the Port.....	1
1.1.2 Configuring the Rate Unit for the Port.....	1
1.1.3 Configuring the Storm Control on the Port.....	1
2. Secure Port Configuration.....	3
2.1 Overview.....	3
2.2 Configuration Task of the Secure Port.....	3
2.3 Configuring the Secure Port.....	3
2.3.1 Configuring the Secure Port Mode.....	3
2.3.2 Configuring the Static MAC Address of the Secure Port.....	3

1. Interface Configuration

1.1 Configuring the Ethernet Interface

The switch supports the 10Mbps/100Mbps Ethernet interfaces. See the following content for detailed configuration. Among the configuration, the first step is mandatory while others are optional.

1.1.1 Configuring Flow Control for the Port

You can control the flow rate on the incoming and outgoing ports through configuration. Run the following commands in privileged mode to limit the flow rate of the port.

Each band is defaulted as 128 kbps.

Command	Purpose
configure	Enters the global configuration mode.
interface f1/0	Enters the to-be-configured port.
[no] switchport rate-limit band {ingress egress}	Configures the flow rate limits for the port. The parameter ban represents the to-be-limited flow rate. The parameter ingress means the function works at the incoming port. The parameter egress means the function works at the outgoing port.
exit	Exits the global configuration mode.
exit	Returns the EXEC mode.

1.1.2 Configuring the Rate Unit for the Port

Run the following commands to modify the rate unit of the flow on a port. The rate unit can be one of these values: 16K, 64K, 128K, 1M, 10M and 40M.

Command	Purpose
configure	Enters the global configuration mode.
[no] rate-unit count	Configures the rate unit for a port.
exit	Returns the EXEC mode.

1.1.3 Configuring the Storm Control on the Port

The ports of the switch may receive the attack by the continuous abnormal unicast (MAC address lookup failing), multicast or broadcast message. In this case, the attacked ports or the whole switch may break down. The storm control mechanism of the port is therefore generated.

Command	Purpose
storm-control {broadcast multicast unicast} threshold count	Performs the storm control to the broadcast/multicast/unicast message.
no storm-control {broadcast multicast unicast} threshold	Cancels the storm control.

2. Secure Port Configuration

2.1 Overview

You can control the access function of the secure port, enabling the port to run in a certain range according to your configuration. If you enable the security function of a port through configuring the number of secure MAC addresses for the port. If the number of secure MAC addresses exceeds the upper limitation and MAC addresses are insecure, secure port violation occurs. You should take actions according to different violation modes.

The secure port has the following functions:

- Configuring the number of secure MAC addresses
- Configuring static secure MAC addresses

If the secure port has no static secure MAC address or the number of static secure MAC addresses is smaller than that of secure MAC addresses, the port will learn dynamic MAC addresses.

- Dropping violated packets when secure port violation occurs. The section describes how to configure the secure port for the switch.

2.2 Configuration Task of the Secure Port

- Configuring Secure Port Mode
- Configuring the Static MAC Address of the Secure Port

2.3 Configuring the Secure Port

2.3.1 Configuring the Secure Port Mode

There are two static secure port modes: accept and reject. If it is the accept mode, only the flow whose source address is same to the local MAC address can be received by the port for communication. If it is the reject mode, only the flow whose source address is different to the local MAC address can be received by the port.

Run the following commands in EXEC mode to enable or disable the secure port function:

Command	Purpose
configure	Enters the global configuration mode.
interface g0/1	Enters the to-be-configured port.
[no] switchport port-security mode static {accept reject}	Configures the secure port mode.
exit	Goes back to the global configuration mode.
exit	Goes back to the EXEC mode.
write	Saves the configuration.

2.3.2 Configuring the Static MAC Address of the Secure Port

After you configure the static MAC address of the secure port, In the accept mode, the flow whose source address is same to the local MAC address can be received by the port for communication. In reject mode, the flow whose source address is different to the local MAC address can be received by the port.

Run the following commands in EXEC mode to configure the static MAC address of the secure port:

Command	Purpose
configure	Enters the global configuration mode.
interface g0/1	Enters the to-be-configured port.
[no] switchport port-security static mac-address mac-addr	Adds or deletes the static MAC address of the secure port. <ul style="list-style-type: none">• mac-addr is the configured MAC address.
exit	Goes back to the global configuration mode.
exit	Goes back to the EXEC mode.
write	Saves the configuration.