

MAC Access List Configuration

Model: S5900-24S4T2Q

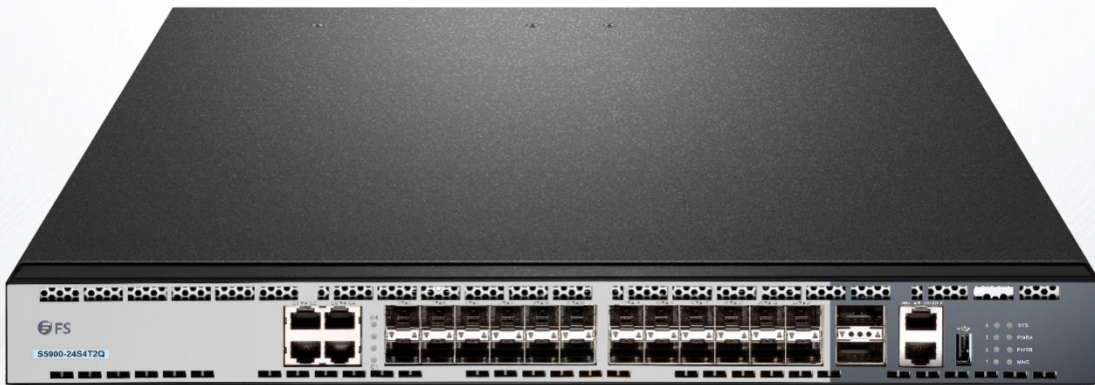


Table of Contents

1. Configuring MAC List.....	1
1.1 MAC List Configuration Task.....	1
1.1.1 Creating MAC List.....	1
1.1.2 Configuring Items of MAC List.....	1
1.1.3 Applying MAC List.....	2

1. Configuring MAC List

1.1 MAC List Configuration Task

The section describes how to configure the Ethernet interface. The switch supports the 10Mbps Ethernet and the 100Mbps fastEthernet. The detailed configuration is shown as follows. The step described in section 1.1.1 is mandatory. Steps described in other sections are optional.

1.1.1 Creating MAC List

To apply the MAC list on the port, you must first create the MAC list. After the MAC list is successfully created, you log in to the MAC list configuration mode and then you can configure items of the MAC access list.

Perform the following operations to add and delete a MAC list in privilege mode:

Run...	To...
configure	Log in to the global configuration mode.
[no] mac access-list name	Add or delete a MAC list. name means the name of the MAC list.

1.1.2 Configuring Items of MAC List

You can use the permit or deny command to configure the permit or deny items of the MAC list. Multiple permit or deny items can be configured on a MAC list.

The mask of multiple items configured in a MAC list must be the same. Otherwise, the configuration may be out of effect (see the following example). The same item can only be configured once in the same MAC address.

Perform the following operations in MAC list configuration mode to configure the items of the MAC list:

Run...	To...
[no] {deny permit} {any host src-mac-addr} {any host dst-mac-addr} [ethertype]	Add/Delete an item of the MAC list. You can rerun the command to add or delete multiple items of the MAC list. any means any MAC address can be compatible; src-mac-addr means the source MAC address; dst-mac-addr means the destination MAC address. ethertype means the type of matched Ethernet packet.
exit	Log out from the MAC list configuration mode and enter the global configuration mode again.
exit	Enter the management mode again.
write	Save configuration.

MAC list configuration example

```
Switch_config#mac acce 1
Switch-config-macl#permit host 1.1.1 any Switch-config-macl#permit host 2.2.2 any
The above configuration is to compare the source MAC address, so the mask is the same. The configuration is successful.
Switch_config#mac acce 1
Switch-config-macl#permit host 1.1.1 any Switch-config-macl#permit any host 1.1.2
Switch-config-macl#2003-11-19 18:54:25 rule conflict,all the rule in the acl should match!
```

The first line on the above configuration is to compare source MAC addresses, while the second line is to compare destination MAC addresses. Therefore, the mask is different. The configuration fails.

1.1.3 Applying MAC List

The created MAC list can be applied on any physical port. Only one MAC list can be applied to a port. The same MAC list can be applied to multiple ports.

Enter the privilege mode and perform the following operation to configure the MAC list.

Run...	To...
configure	Enter the global configuration mode.
interface f0/1	Log in to the port that is to be configured.
[no] mac access-group name	Apply the created MAC list to the port or delete the applied MAC list from the port. name means the name of the MAC list.
exit	Enter the global configuration mode again.
exit	Enter the management mode again.
write	Save configuration.