

Configuration Preparation

Model: S5900-24S4T2Q

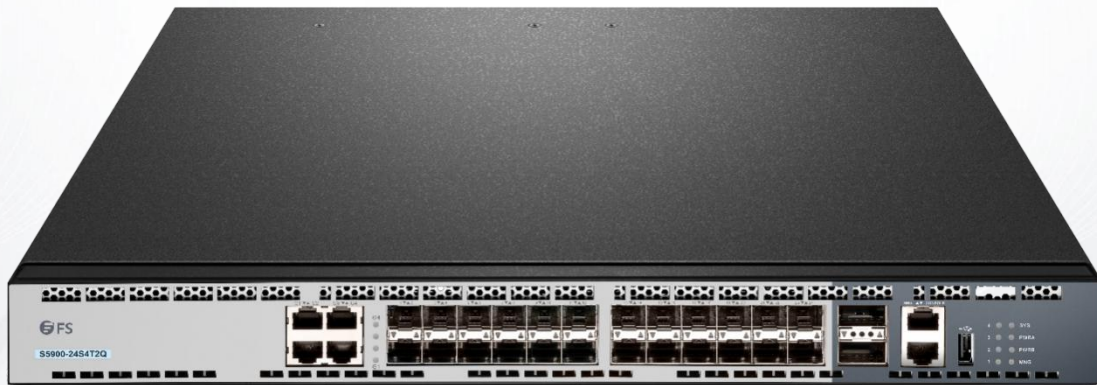


Table of Contents

1. Configuration Preparation.....	1
1.1 Port Number of the Switch.....	1
1.2 Preparation Before Switch Startup.....	1
1.3 Acquiring Help.....	1
1.4 Command Modes.....	1
1.5 Canceling a Command.....	2
1.6 Saving Configuration.....	2

1. Configuration Preparation

The chapter mainly describes the following preparatory works before you configure the switch at the first time:

- Port number of the switch
- Preparation before switch startup
- How to get help
- Command mode
- Canceling a command
- Saving configuration

1.1 Port Number of the Switch

The physical port of the switch is numbered in the <type><slot>/<port> form. The type-to-name table is shown as follows:

Interface Type	Name	Simplified Name
10M Ethernet	Ethernet	e
100M fast Ethernet	FastEthernet	f
1000M Ethernet	GigaEthernet	g

The expansion slot number to mark and set ports must be the number 0. Other expansion slots are numbered from left to right, starting from 1.

The ports in the same expansion slot are numbered according to the order from top to bottom and the order from left to right, starting from 1. If only one port exists, the port number is 1.

Note:

Ports in each kind of modulars must be numbered sequentially from top to bottom and from left to right.

1.2 Preparation Before Switch Startup

Do the following preparatory works before the switch is configured:

- (1) Set the switch's hardware according to the requirements of the manual.
- (2) Configure a PC terminal simulation program.
- (3) Determine the IP address layout for the IP network protocols.

1.3 Acquiring Help

Use the question mark (?) and the direction mark to help you enter commands:

- Enter a question mark. The currently available command list is displayed.
Switch> ?
- Enter several familiar characters and press the space key. The available
Switch> s?
- Enter a command, press the space key and enter the question mark. The command parameter list is displayed.
Switch> show ?

Press the "up" key and the commands entered before can be displayed. Continue to press the "up" key and more commands are to be displayed. After that, press the "down" key and the next command to be entered is displayed under the current command.

1.4 Command Modes

The command line interfaces for the switch can be classified into several modes. Each command mode enables you to configure different groupware. The command that can be used currently is up to the command mode where you are. You can enter the question mark in different command modes to obtain the available command list. Common command modes are listed in the following table:

Command Mode	Login Mode	Prompt	Exit Mode
System monitoring mode	Enter Ctrl-p after the power is on.	monitor#	Run quit.

User mode	Log in.	Switch>	Run exit or quit.
Management mode	Enter enter or enable in user mode.	Switch#	Run exit or quit.
Office configuration mode	Enter config in management mode.	Switch config#	Run exit or quit or Ctrl-z to directly back to the management mode.
Port configuration mode	Enter the interface command in office configuration mode, such as interface f0/1.	Switch_config_f0/1 #	Run exit or quit or Ctrl-z to directly back to the management mode.

Each command mode is unsuitable to subsets of some commands. If problem occurs when you enter commands, check the prompt and enter the question mark to obtain the available command list. Problem may occur when you run in incorrect command mode or you misspelled the command.

Pay attention to the changes of the interface prompt and the relative command mode in the following case:

```
Switch> enter
```

```
Password: <enter password>
```

```
Switch# config
```

```
Switch_config# interface f0/1
```

```
Switch_config_f0/1# quit
```

```
Switch_config# quit
```

```
Switch#
```

1.5 Canceling a Command

To cancel a command or resume its default properties, add the key word "no" before most commands. An example is given as follows:

```
no ip routing
```

1.6 Saving Configuration

You need to save configuration in case the system is restarted or the power is suddenly off. Saving configuration can quickly recover the original configuration. You can run write to save configuration in management mode or office configuration mode.