

S5850-24T16B Switch FSOS Software Upgrade Guide

Model: S5850-24T16B

Contents

1. Introduction to Version Upgrade.....	1
2. CLI Upgrade.....	1
2.1 Network Topology.....	1
2.2 Configuration Steps.....	1
3. Web Upgrade.....	3
3.1 Network Topology.....	3
3.2 Configuration Steps.....	3

1. Introduction to Version Upgrade

When new features are added or the original performance needs to be optimized and the current running version is out of date, the device needs to be upgraded. In this case, you need to load a high version of the system software, upgrade through the CLI interface, WEB interface, and restart the device.

2. CLI Upgrade

2.1 Network Topology

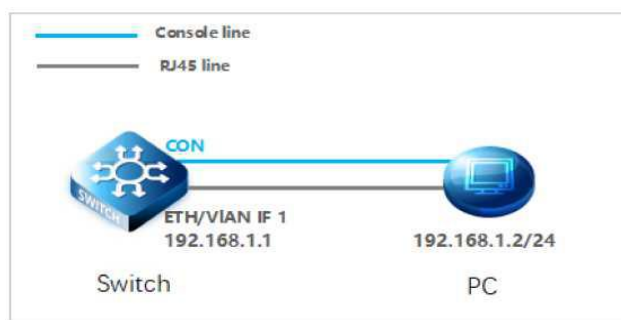


Figure 1 PC connection switch page

2.2 Configuration Steps

(1) connection Equipment

#Connect the PC and the switch to the network cable and the console port. Connect one end of the RJ-45 network cable to the network card interface of the PC and the other end to the network port of the SW. Connect one end of the console cable USB to the USB port of the PC. One end of the RJ-45 is connected to the console port on the front panel of the switch.

(2) Download Configuration Software

After the connection is completed, there we recommend the super terminal, putty or Secure CRT tool to configure the switch.

(3) Switch on and Use Login Software

#Energizing the switch, then open the installed login software, select the serial port of login mode, port through the device manager to determine. Baud rate :115200, Data bits: 8, Parity: None, Stop bits: 1. (Reference below)

NOTE: COM Number can be viewed through device manager. (right click on my computer.>manage>device manager>port (COM and LPT) If it displays an unrecognized USB device, please download and install the corresponding driver.

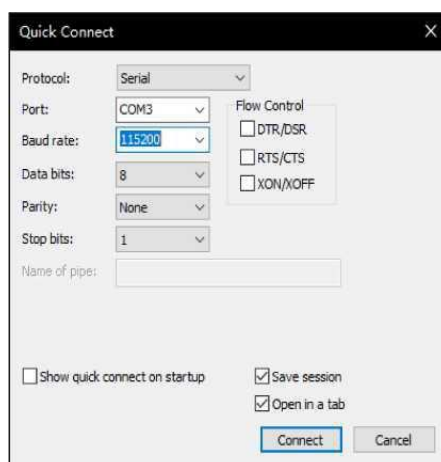


Figure 2 Login cli configuration page

(4) Login Switch

#After completing the above steps, hitting the Enter key of the keyboard will prompt you to enter the account password. At this time, enter the default username and password **admin/admin** to log in to the switch.

(5) Upgrade Software

#After logging in to the switch, open the installed TFTP upload software, specify the server root directory in its options, and put the files to be uploaded into this directory.

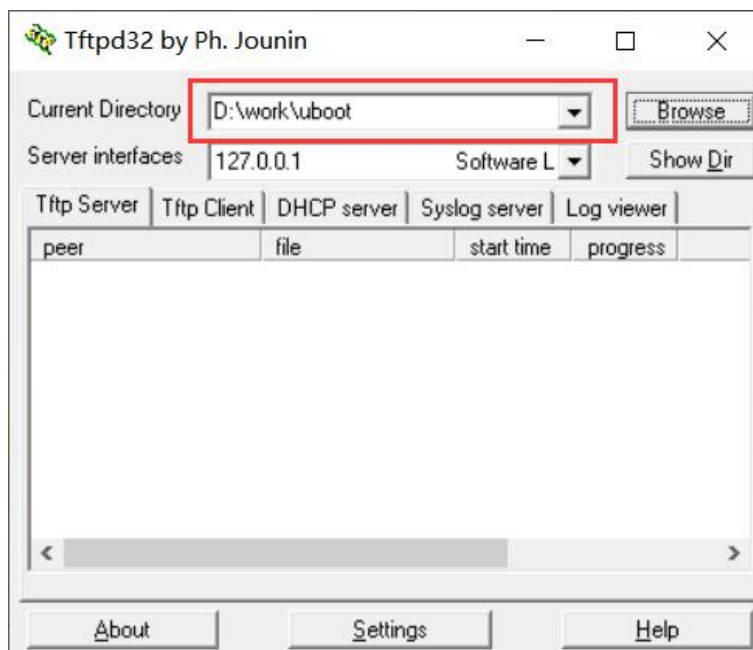


Figure 3 TFTP server configuration page

NOTE: The file FSOS_S5800_8TF12S-V5.3.x.bin should be placed in the root directory of the server.

(6) Upgrade ulmage

```
Console# copy mgmt-if tftp://192.168.1.2/FSOS_S5800_8TF12S-V5.3.x.bin flash:/boot/FSOS_S5800_8TF12S-V5.3.x.bin
```

NOTE: The 5.3.x in file FSOS_S5800_8TF12S-V5.3.x.bin indicates support for all versions of the 5.3 series.

(7) Application SystemFile

```
Console#boot system flash:/boot/FSOS_S5800_8TF12S-V5.3.x.bin
```

(8) Reboot the device

```
Console#reboot
```

(9) Upgrade weblmage

#After completing the above steps, wait for the device to restart before continuing to upgrade the weblmage.

```
Console# copy mgmt-if tftp://192.168.1.2/FSOS-weblmage-v5.3.x.bin flash:/FSOS-weblmage-v5.3.x.bin
```

(10) Enable web services

```
Console(config)# http server load flash:/FSOS-weblmage-v5.3.x.bin
```

```
Console(config)# service http enable
```

```
Console(config)# service https enable
```

3. Web Upgrade

3.1 Network Topology

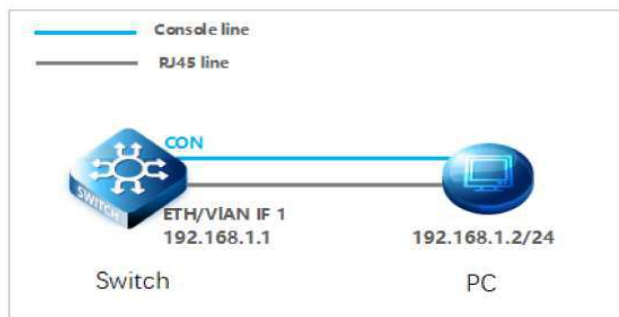


Figure 1 PC connection switch page

3.2 Configuration Steps

- (1) Enable web services
Console(config)# http server load flash:/FSOS-weblImage-v5.3.9.bin
Console(config)# service http enable
Console(config)# service https enable

NOTE: FSOS-weblImage-v5.3.9.bin is the old web version.

- (2) Login WEB
#Enter the IP address of the management interface in the URL field of the browser: 192.168.1.1, and then enter the default username and password: **admin/admin**

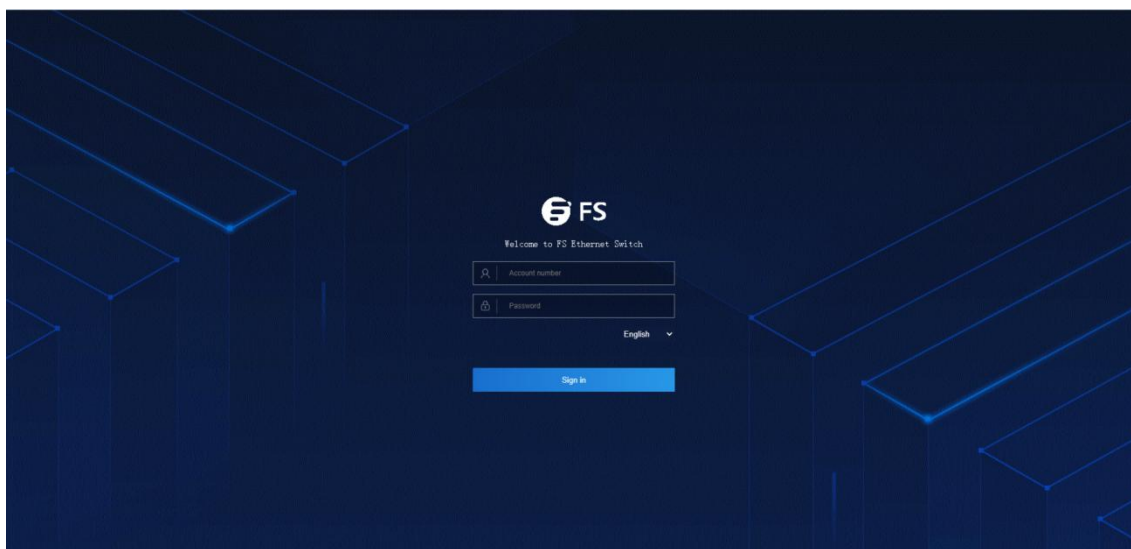


Figure 2 Login web page

After successful login, the monitor page will appear , as shown in figure 3.

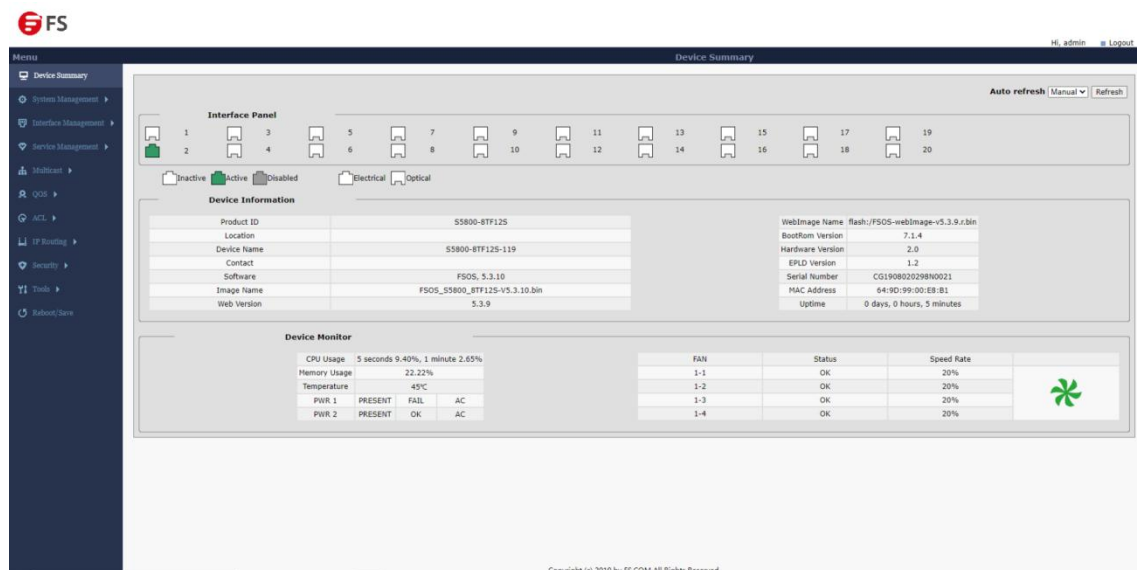


Figure 3 Monitor page

(3) Upgrade ulmage

#After entering the WEB interface of the switch, click “System Management>File Management” to select the ulmage file to be upgraded on web. **During the upgrade process, do not close the upgrade page and power off the device.**

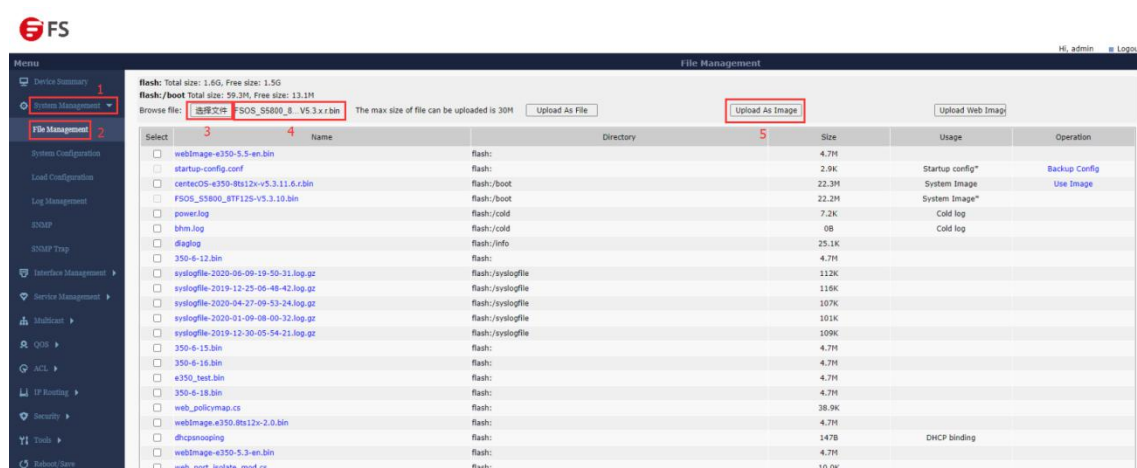


Figure 4 Upgrade ulmage page

(4) Application System File

#After uploading the ulmage, click “Use Image”, you can apply the ulmage file.

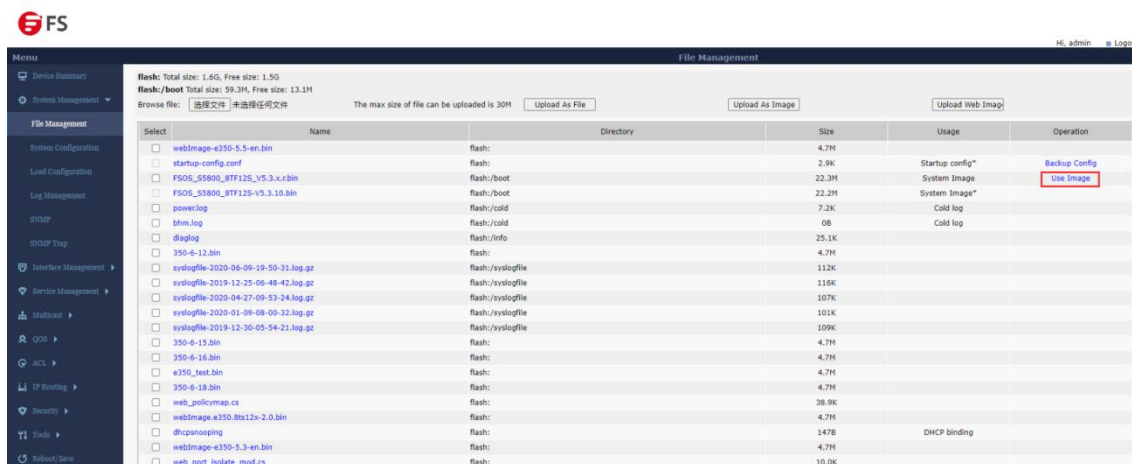


Figure 5 Apply ulmage page

#After applying the ulmage file, you can see that it is followed by a *.

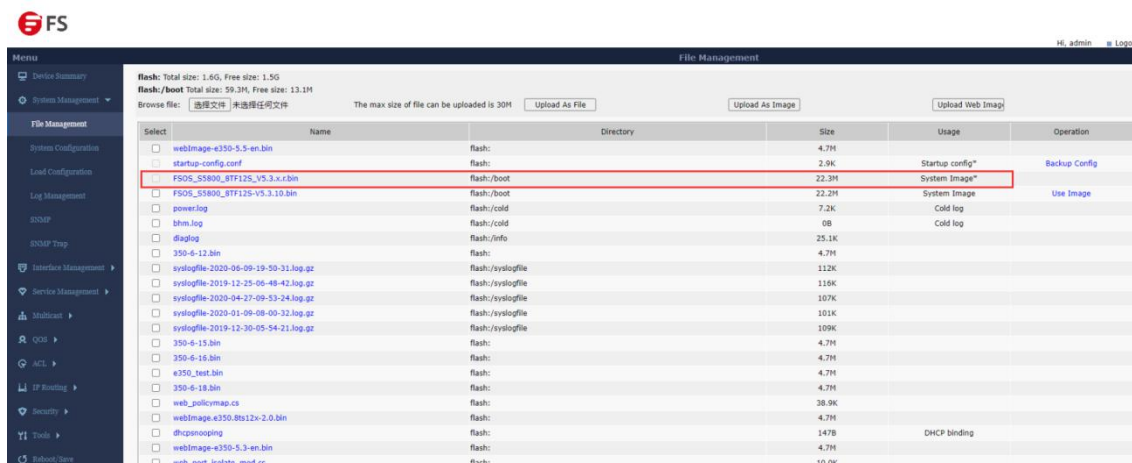


Figure 6 File system page

(5) Reboot the device

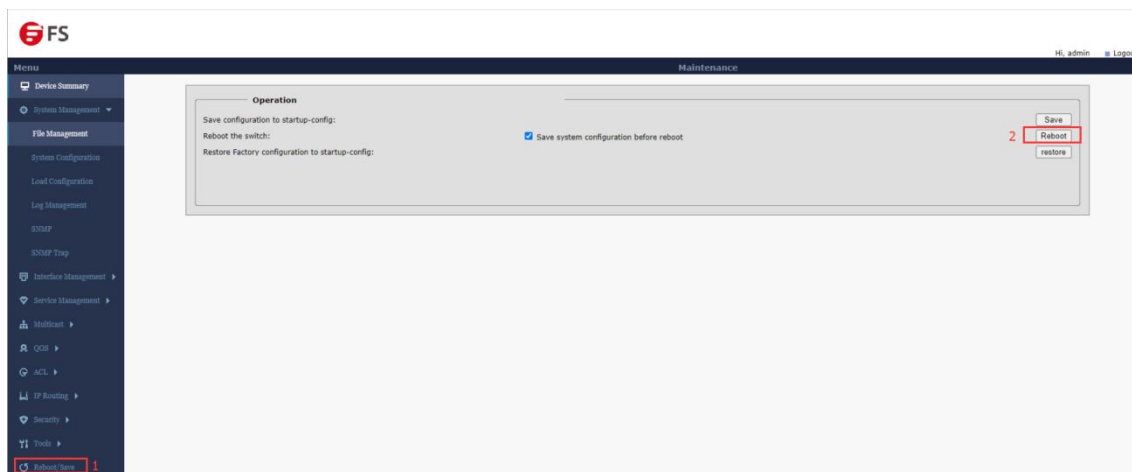


Figure 7 Device reboot page



 <https://www.fs.com>



The information in this document is subject to change without notice. FS has made all efforts to ensure the accuracy of the information, but all information in this document does not constitute any kind of warranty.