

# S5810 Series Switches Reset and Recovery System Configuration Guide

---

Model: S5810-28FS; S5810-48FS; S5810-48TS-P

## Contents

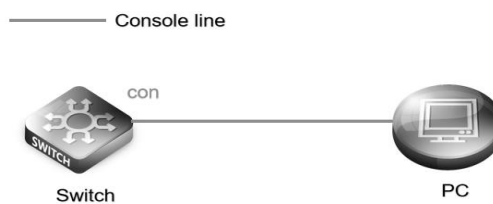
<b>1. Clear Device Password</b> .....	<b>1</b>
<b>1.1 Networking Requirements</b> .....	<b>1</b>
<b>1.2 Network Topology</b> .....	<b>1</b>
<b>1.3 Configuration Steps</b> .....	<b>1</b>
1.3.1 U-boot Save Configuration and Reset Password.....	1
1.3.2 U-boot Restore Factory Settings Reset Password.....	2
<b>2. Reset</b> .....	<b>4</b>
<b>2.1 Networking Requirements</b> .....	<b>4</b>
<b>2.2 Network Topology</b> .....	<b>4</b>
<b>2.3 Configuration Steps</b> .....	<b>4</b>
2.3.1 Factory Reset via CLI Interface.....	4

## 1. Clear Device Password

### 1.1 Networking Requirements

- (1) If the administrator forgets the login password and cannot enter the configuration mode for configuration, then you need to use the Console line to enter the CTRL layer for password recovery.
- (2) To do password recovery, you need to prepare the configuration line (console line). During the password recovery process, you need to restart the device to complete the operation at the CTRL layer.
- (3) During the password recovery process, pay attention to rename the file, do not choose to delete the file, otherwise the configuration will be lost.

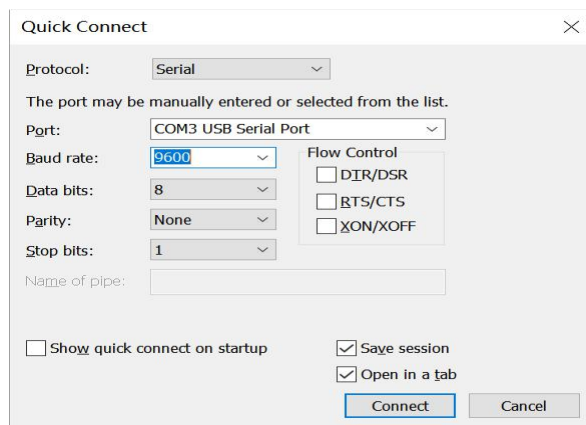
### 1.2 Network Topology



### 1.3 Configuration Steps

#### 1.3.1 U-boot Save Configuration and Reset Password

Log in to the CLI interface of the switch, connect the console port of the switch with a console cable, open the hyper terminal CRT, and set related parameters.



Manually power off and restart the device. When prompted by Ctrl+C, press the Ctrl key C key on the keyboard at the same time to enter the u-boot interface. Under the Rboot menu, click the red reminder below to enter the address configuration menu

```

U-Boot 1.4.2--gf4b0786 (Nov 01 2018 - 09:52:06 +0800)
I2C: ready
DRAM: 1 GiB
NAND: 1024 MiB
Loading Environment from SPI Flash... SF: Detected s25fl128s_64k with page size 256 Bytes, erase size 64 KiB, total 16 MiB
OK
Press Ctrl+B to enter Boot Menu, Press Ctrl+C to enter Rboot 0
===== Rboot Menu(Ctrl+Z to upper level) =====
    Scattered utilities.
*****
    0. Tftp utilities.
    1. X/Y/ZModem utilities.
    2. Run main.
    3. SetMac utilities.
    4. Scattered utilities.
*****
Press a key to run the command: 4
===== Rboot Menu(Ctrl+Z to upper level) =====
    Scattered utilities.
*****
    0. Show Version.
    1. Reload System.
    2. Set Baudrate.
    3. Format Flash.
    4. Exit menu.
*****
Press a key to run the command: 4

```

```
data # cd /mnt/data ----->Enter the data directory
```

```
data #vi config.text ----->Enter the config.text file
```

Use the up, down, left and right keys of the keyboard to move the cursor, find the corresponding password configuration, press dd twice in succession, delete the entire line of commands, and finally press esc, enter: wq, exit the save file, and then just reboot. If you delete the wrong configuration, press esc, enter: q! to force quit the document, and then enter the document with vi config.text.

### 1.3.2 U-boot Restore Factory Settings Reset Password

Manually power off and restart the device. When the Ctrl+C prompt appears, press the Ctrl key C key on the keyboard at the same time to enter the u-boot interface. Under the Rboot menu, click the red reminder below to enter the address configuration menu

```

U-Boot 1.4.2--gf4b0786 (Nov 01 2018 - 09:52:06 +0800)
I2C: ready
DRAM: 1 GiB
NAND: 1024 MiB
Loading Environment from SPI Flash... SF: Detected s25fl128s_64k with page size 256 Bytes, erase size 64 KiB, total 16 MiB
OK
Press Ctrl+B to enter Boot Menu, Press Ctrl+C to enter Rboot 0

```

```
===== Rboot Menu(Ctrl+Z to upper level) =====
```

```
Scattered utilities.
```

```
*****
```

- 0. Tftp utilities.
- 1. X/Y/ZModem utilities.
- 2. Run main.
- 3. SetMac utilities.
- 4. Scattered utilities.

```
*****
```

```
Press a key to run the command: 4
```

```
===== Rboot Menu(Ctrl+Z to upper level) =====
```

```
Scattered utilities.
```

```
*****
```

- 0. Show Version.
- 1. Reload System.
- 2. Set Baudrate.
- 3. Format Flash.
- 4. Exit menu.

```
*****
```

```
Press a key to run the command: 4
```

```
Enter the data directory
```

```
~ # cd /mnt/data/
```

```
Rename the config.text file to config.text.bak
```

```
/mnt/data # mv config.text config.text.bak
```

```
/mnt/data # sync
```

```
/mnt/data # reboot
```

```
The system is going down NOW!
```

```
Sent SIGTERM to allTerminated
```

```
sh: can't set tty process group (Inappropriate ioctl for device)
```

```
[1]+  Terminated          reboot
```

```
Sent SIGKILL to all processes
```

```
Requesting system reboot
```

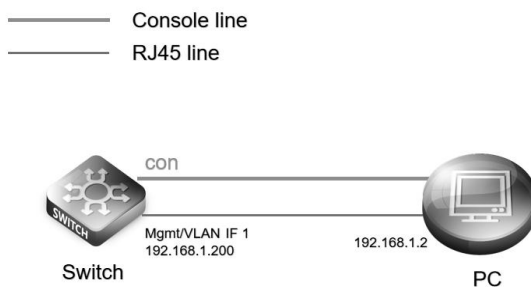
```
[ 1847.933991] reboot: Restarting system
```

## 2. Reset

### 2.1 Networking Requirements

- (1) After restoring the factory settings, the original configuration will be cleared. If the configuration is more important, please backup the configuration to the local computer first.
- (2) After restoring factory settings, the default ip is 192.168.1.200, web interface user name and password admin/admin
- (3) The console cable and RJ45 network cable of the switch need to be prepared.

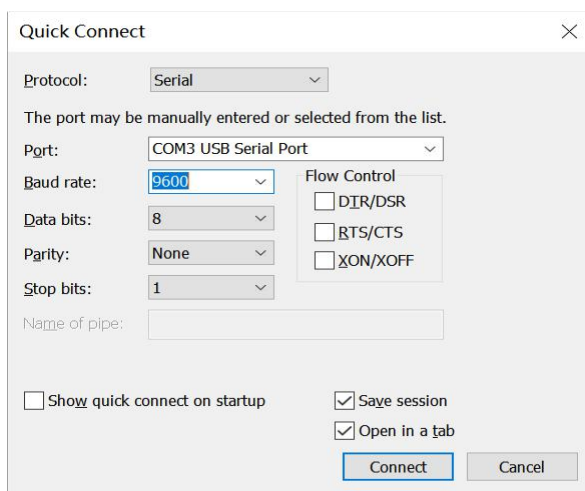
### 2.2 Network Topology



### 2.3 Configuration Steps

#### 2.3.1 Factory Reset via CLI Interface

Log in to the CLI interface of the switch, connect the console port of the switch with a console cable, open the hyper terminal CRT, and set related parameters.



Enter the set user name and password, execute dir to view the file.

```
Switch>enable
Switch#dir
```

```

Directory of flash:/
Number  Properties  Size          Time          Name
-----  -
 1      drwx         160B      Thu May 14 09:20:14 2020  dev
 2      drwx         160B      Thu May 14 09:19:52 2020  rep
 3      drwx         224B      Thu Jul 9 10:11:04 2020  uft
 4      drwx         224B      Thu May 14 09:19:53 2020  var
 5      drwx         224B      Thu May 14 09:20:15 2020  vsd
 6      -rw-         2.0k      Thu Jul 9 10:13:00 2020  split.db
 7      drwx         160B      Thu May 14 09:20:16 2020  addr
 8      drwx         232B      Thu May 14 09:20:08 2020  tipc
 9      drwx         304B      Thu May 14 09:21:01 2020  security
10     -rwx         82B       Thu Jul 9 10:13:00 2020  config_vsu.dat
11     -rw-         1.4k      Thu Jul 9 10:13:03 2020  config.text
12     -rwx         21B       Thu Jul 9 10:13:12 2020  syslog_rfc5424_flag.txt
13     drwx         160B      Wed Jul 8 10:51:30 2020  upgrade_storage
14     -rwx         1.6k      Thu May 14 09:21:53 2020  rsa_private.bin
15     -rwx         1.6k      Thu May 14 09:20:30 2020  rsa1_private.bin
16     -rwx         24B       Thu Jul 9 10:11:39 2020  split_cfg_dat_unit_0
17     drwx         528B      Thu May 14 13:36:44 2020  upgrade
18     drwx         312B      Fri Jul 3 10:38:54 2020  syslog
19     drwx         256B      Thu May 14 13:37:10 2020  install_file
20     drwx         160B      Wed Jul 8 09:54:34 2020  upgrade_rep
21     -rw-         2.0k      Mon May 25 15:20:20 2020  liu_config.text
22     -rw-         0B        Thu May 14 09:21:57 2020  policy_adjust_debug.txt
23     -rw-         1.5k      Tue Jul 7 12:20:53 2020  standalone.text
10 files, 13 directories
434,872,320 bytes data total (283,701,248 bytes free)
1,109,393,408 bytes flash total (283,701,248 bytes free)

```

Enter the set user name and password, execute dir to view the file

```
Switch#delete config.text
```

```
This operation will delete [flash:/config.text], continue? [Y/N]:y
```

```
Delete success.
```

```
Switch#
```

After deleting the configuration file, enter the reload command, when confirming the restart, enter Y, set to restore to the factory settings after restart.

```
Switch#reload
```

```
Reload system?(Y/N)y
```



 <https://www.fs.com>



The information in this document is subject to change without notice. FS has made all efforts to ensure the accuracy of the information, but all information in this document does not constitute any kind of warranty.