

S5800 Series Switches Enable Web Management Configuration Guide

Models: S5800-8TF12S

S5800-48T4S

S5800-48F4SR

Content

1. Introduction.....1

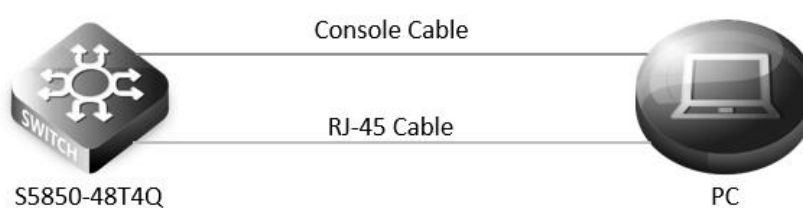
2. Topology.....1

3.Configuration Steps.....2

1. Introduction

This document explains in detail how to turn on the relevant content of the Web, and it is only available for Web management with version numbers V7.2.4.r1 or V5.3.10 and below.

2. Topology



3. Configuration Steps

(1) Connection equipment

According to the way of networking topo to connect PC and S5850-48T4Q switch to network. One end of the RJ-45 cable is connected to the PC's network port, and the other end is connected to the Manage interface of S5850-48T4Q. At the same time, one end of console line USB is connected to PC's USB interface, and the other end of RJ-45 connector is connected to console interface of front panel of switch.

(2) Download related software

Search and install SecureCRT debugging software and Tftpd32 file transfer software through Google.

(3) Configure software parameters

Energizing the switch. Then right-click "my computer" on PC, click management, and view the com port corresponding to console cable from device manager. (If it display an unrecognized USB device, please download and install the corresponding driver). Then open SecureCRT, select the serial login mode, and select the serial number from the device manager. Baud rate is 115200, no flow control is selected. As the picture shows.



(4) Login switch

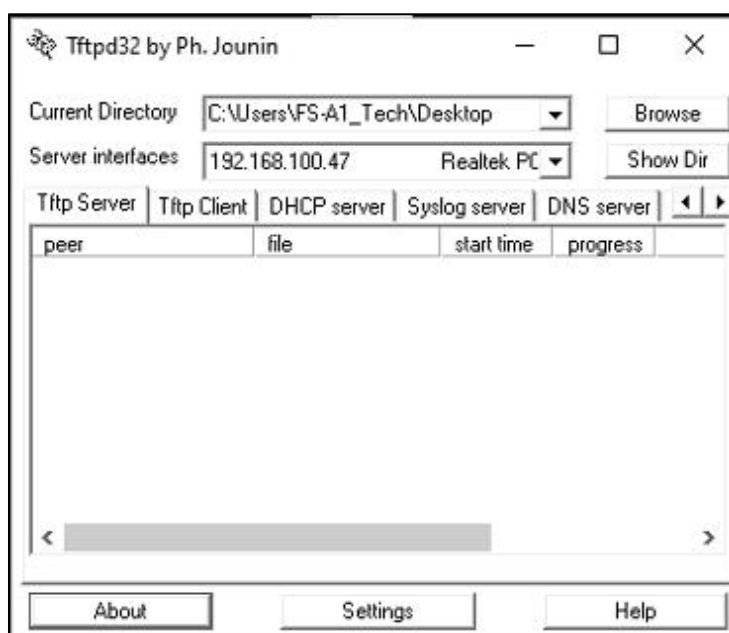
After a successful connection, tapping the Enter key on the keyboard will jump out of the prompt to enter the account password. At this point, enter the default user name and password admin/admin, you can log in to the switch. Then use `cd flash:/?` command to see if a WebImage file exists in the system directory of the switch. As the picture shows, if this file exists, skip to Step 7.

S5850-48T4Q# cd flash:/?

flash:/log	Directory
flash:/startup-config.conf	File
flash:/boot	Directory
flash:/cold	Directory
flash:/conf	Directory
flash:/info	Directory
flash:/syslogfile	Directory
flash:/dhcpsnooping	File
flash:/ldp3.pcap	File
flash:/factory-config.bin	File
flash:/mirror	Directory
flash:/sys-diag	Directory
flash:/reboot-info	Directory
flash:/startup-config.config.backup	File
flash:/0102-config	File
flash:/syslog	File
flash:/ldp.pcap	File
flash:/001E080D0F65.4.lic	File
flash:/monitor	Directory

(5) Configure Tftpd32 software

Open Tftpd32 software and set Server interfaces as the local IP address of the computer. Current Directory fills in the file path where the upgrade package is located. As the picture shows.



(6) Download WeblImage

Through Tftpd32 software,download WeblImage to the root directory of the switch, flash:/.

```
S5850-48T4Q# copy mgmt-if tftp://192.168.100.47/ FSOS-weblImage-v7.2.3.bin flash:/
```

(7) Configuration switch management IP

Configuration management IP for Management interface of switch under CLI interface

```
S5850-48T4Q# configure terminal
S5850-48T4Q(config)# management ip address 192.168.100.6/24
S5850-48T4Q(config)# management route add gateway 192.168.100.1
S5850-48T4Q(config)#exit
```

(8) Enable Http services

```
S5850-48T4Q# configure terminal
S5850-48T4Q(config)# http server load flash:/FSOS-weblImage-v7.2.3.bin
S5850-48T4Q(config)# service http enable
```

(9) Enter Web interface

Enter the Administrator IP address:192.168.100.6 in the URL bar of Google Browser,then enter the default username and password admin/admin.As the picture shows.



NOTE: Recommended use of the latest version of WeblImage files.



 <https://www.fs.com>



The information in this document is subject to change without notice. FS has made all efforts to ensure the accuracy of the information, but all information in this document does not constitute any kind of warranty.