

# S3950-4T12S Switch FSOS

## Software Upgrade Guide

---

Model: S3950-4T12S

## Contents

<b>1. Introduction to Version Upgrade.....</b>	<b>1</b>
<b>2. CLI Upgrade.....</b>	<b>1</b>
2.1 Network Topology.....	1
2.2 Configuration Steps.....	1
<b>3. Web Upgrade.....</b>	<b>3</b>
3.1 Network Topology.....	3
3.2 Configuration Steps.....	3

## 1. Introduction to Version Upgrade

When new features are added or the original performance needs to be optimized and the current running version is out of date, the device needs to be upgraded. In this case, you need to load a high version of the system software, upgrade through the CLI interface, WEB interface, and restart the device.

## 2. CLI Upgrade

### 2.1 Network Topology

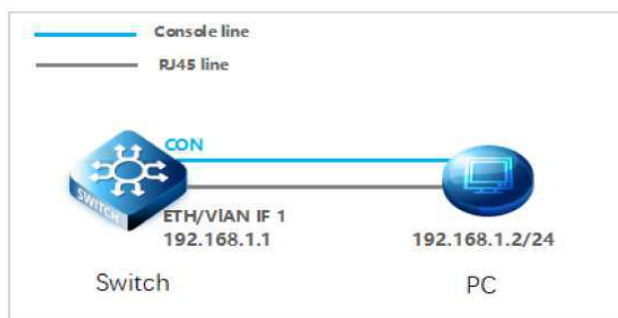


Figure 1 PC connection switch page

### 2.2 Configuration Steps

#### (1) Connection Equipment

#Connect the PC and the switch to the network cable and the console port. Connect one end of the RJ-45 network cable to the network card interface of the PC and the other end to the network port of the SW. Connect one end of the console cable USB to the USB port of the PC. One end of the RJ-45 is connected to the console port on the front panel of the switch.

#### (2) Download Configuration Software

# After the connection is completed, there we recommend the super terminal, putty or Secure CRT tool to configure the switch.

#### (3) Switch on and Use Login Software

#Energizing the switch, then open the installed login software, select the serial port of login mode, port through the device manager to determine. Baud rate :115200, Data bits: 8, Parity: None, Stop bits: 1. (Reference below)

**NOTE:** COM Number can be viewed through device manager. (right click on my computer.>manage>device manager>port (COM and LPT) If it displays an unrecognized USB device, please download and install the corresponding driver.

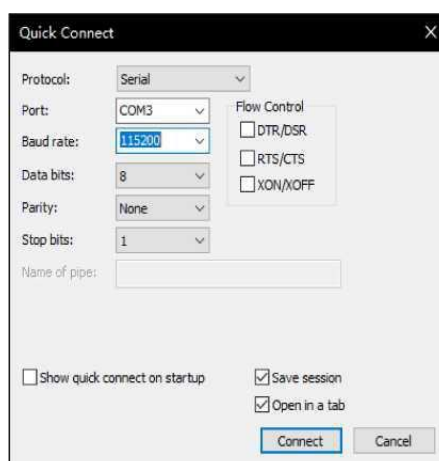


Figure 2 Login cli configuration page

#### (4) Login Switch

#After completing the above steps, hitting the Enter key of the keyboard will prompt you to enter the account password. At this time, enter the default username and password **admin/admin** to log in to the switch.

## (5) Upgrade Software

#After logging in to the switch, open the installed TFTP upload software, specify the server root directory in its options, and put the files to be uploaded into this directory.

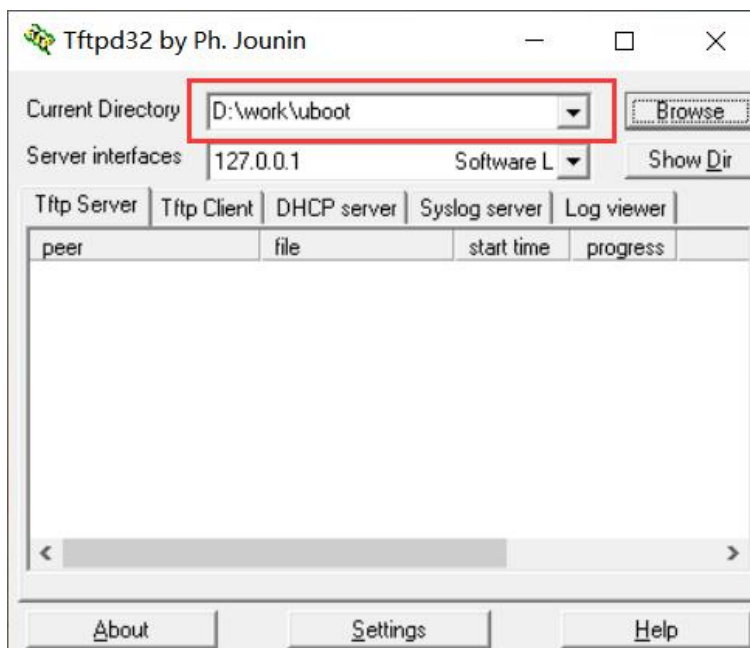


Figure 3 TFTP server configuration page

**NOTE:** The file FSOS\_S3950\_4T12S-v5.3.11.r5.r.bin should be placed in the root directory of the server.

## (6) Upgrade ulmage

Console# copy mgmt-if tftp://192.168.1.2/FSOS\_S3950\_4T12S-v5.3.11.r5.r.bin flash:/boot/FSOS\_S3950\_4T12S-v5.3.11.r5.r.bin

## (7) Application System File

Console#boot system flash:/boot/FSOS\_S3950\_4T12S-v5.3.11.r5.r.bin

## (8) Reboot the device

Console#reboot

## (9) Upgrade weblmage

#After completing the above steps, wait for the device to restart before continuing to upgrade the weblmage.

Console# copy mgmt-if tftp://192.168.1.2/FSOS-weblmage-v5.3.11.r5.r.bin flash:/FSOS-weblmage-v5.3.11.r5.r.bin

## (10) Enable web services

Console(config)# http server load flash:/FSOS-weblmage-v5.3.11.r5.r.bin

Console(config)# service http enable

Console(config)# service https enable

## 3. Web Upgrade

### 3.1 Network Topology

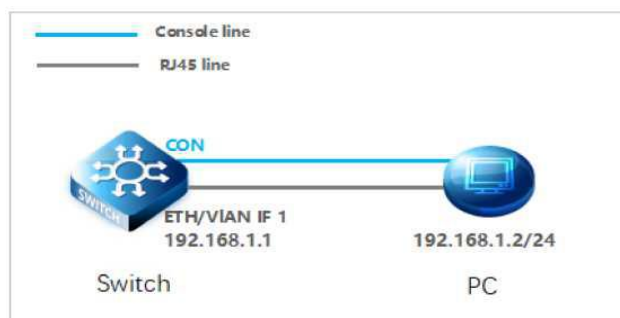


Figure 1 PC connection switch page

### 3.2 Configuration Steps

(1) Enable web services

```
Console(config)# http server load flash:/FSOS-WebImage.bin
```

```
Console(config)# service http enable
```

```
Console(config)# service https enable
```

(2) Login WEB

#Enter the IP address of the management interface in the URL field of the browser: 192.168.1.1, and then enter the default username and password: **admin/admin**

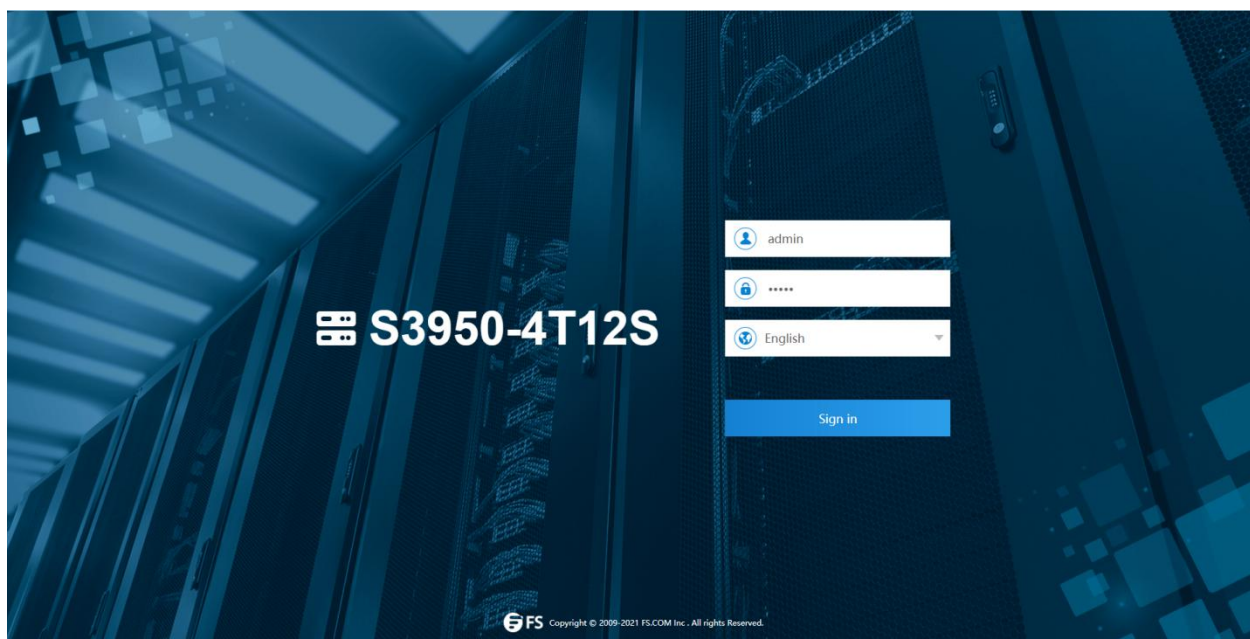


Figure 2 Login web page

After successful login, the monitor page will appear, as shown in figure 3.

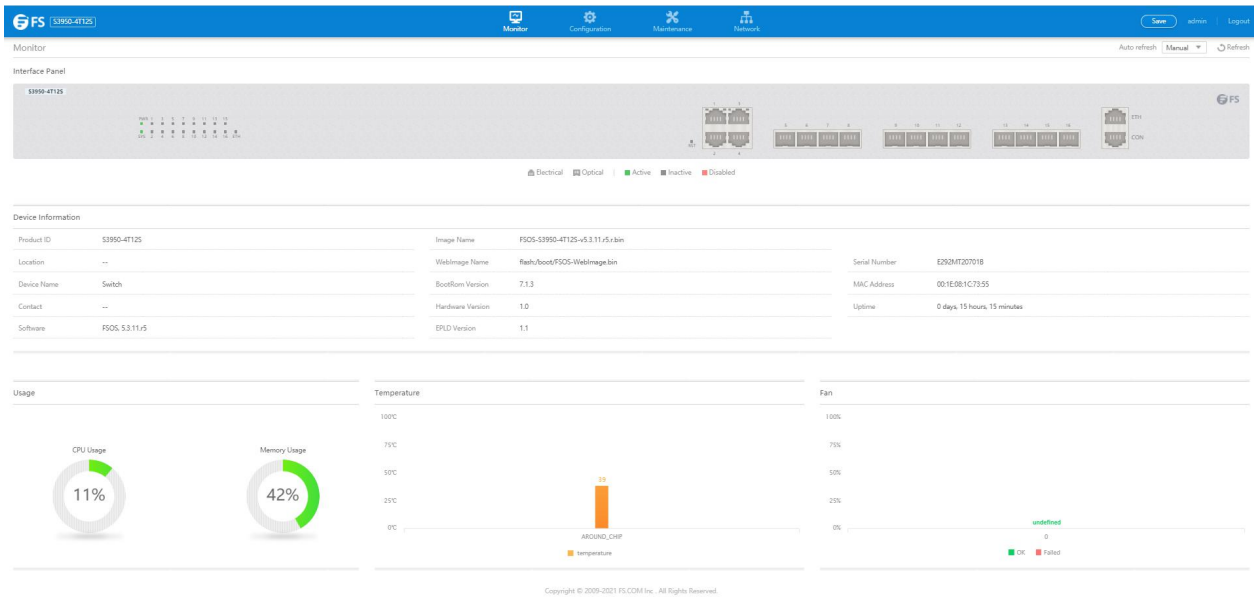


Figure 3 Monitor page

### (3) Upgrade ulmage

#After entering the WEB interface of the switch, click "System Management>File Management" to select the ulmage file to be upgraded on web. **During the upgrade process, do not close the upgrade page and power off the device.**

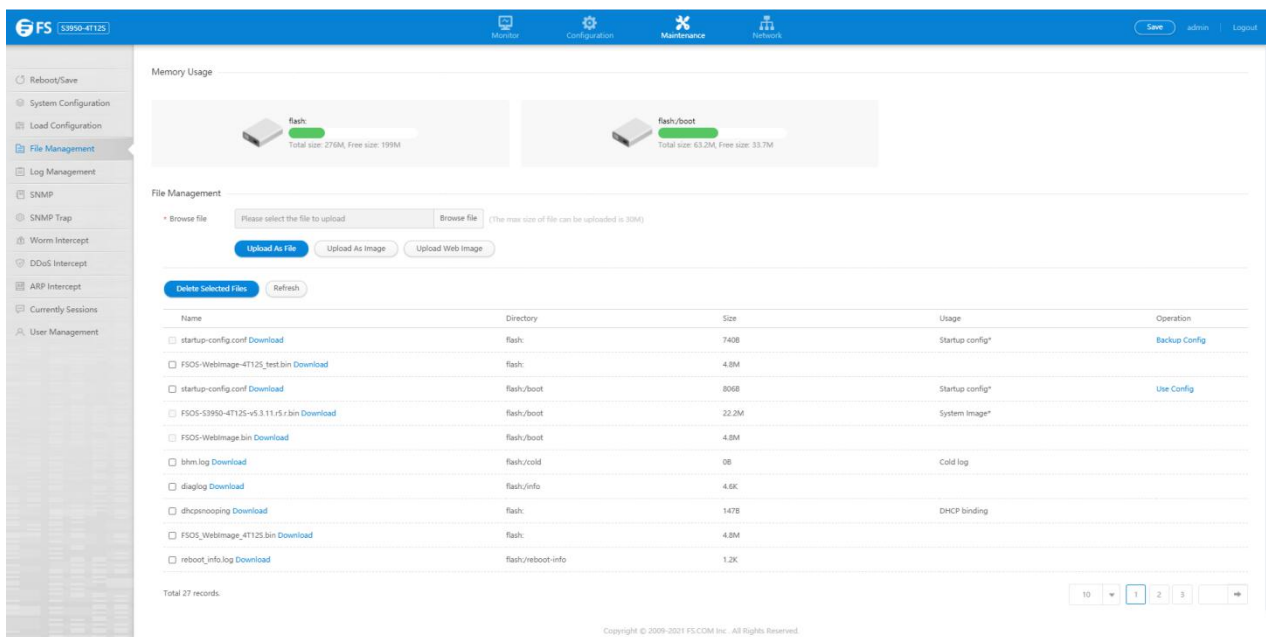
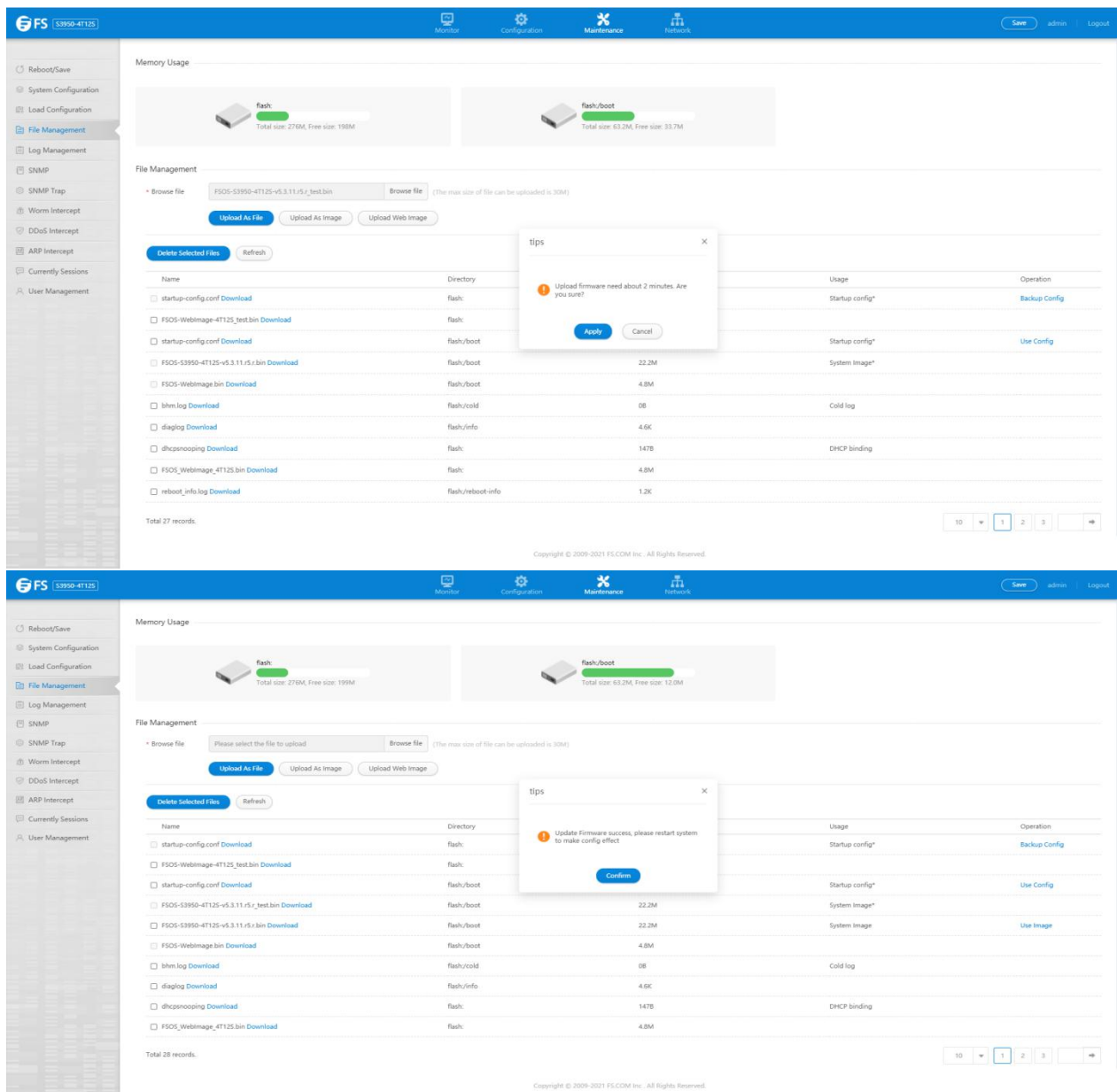


Figure 4 Upgrade ulmage page

## (4) Application System File

#After uploading the ulmage, click "Use Image", you can apply the ulmage file.



The screenshot displays the FSOS File Management interface for the S3950-4T12S switch. The 'Memory Usage' section shows the status of 'flash' and 'flash/boot' memory. The 'File Management' section includes a 'Browse file' button and a list of files. A 'tips' dialog box is open, indicating that the firmware update is successful and the system needs to be restarted to make the configuration effect.

**Memory Usage:**

- flash: Total size: 276M, Free size: 199M
- flash/boot: Total size: 63.2M, Free size: 33.7M

**File Management:**

Browse file: FSOS-S3950-4T12S-v5.3.11.r5.r\_test.bin (The max size of file can be uploaded is 30M)

Buttons: Upload As File, Upload As Image, Upload Web Image

Buttons: Delete Selected Files, Refresh

Name	Directory	Usage	Operation
startup-config.conf Download	flash	Startup config*	Backup Config
FSOS-Webimage-4T12S_test.bin Download	flash	Startup config*	Use Config
FSOS-S3950-4T12S-v5.3.11.r5.r_test.bin Download	flash/boot	22.2M	System Image*
FSOS-Webimage bin Download	flash/boot	4.9M	
bhm.log Download	flash/cold	0B	Cold log
diaglog Download	flash/info	4.6K	
dhcp Snooping Download	flash	147B	DHCP binding
FSOS_Webimage_4T12S.bin Download	flash	4.9M	
reboot_info.log Download	flash/reboot-info	1.2K	

Total 27 records.

Copyright © 2009-2021 FS.COM Inc. All Rights Reserved.

**tips**

Update Firmware success, please restart system to make config effect

Buttons: Apply, Cancel

Buttons: Confirm

Total 28 records.

Copyright © 2009-2021 FS.COM Inc. All Rights Reserved.

Figure 5 Apply ulmage page

#After applying the ulmage file, you can see that it is followed by a \*.

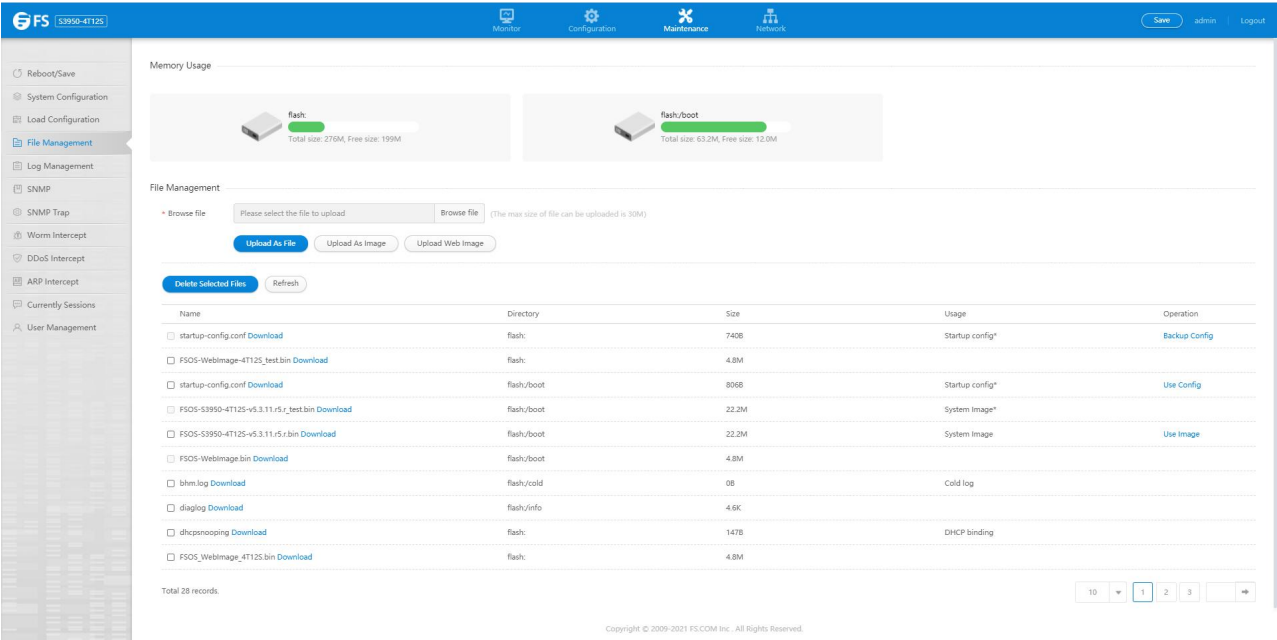


Figure 6 File system page

(5) Reboot the device

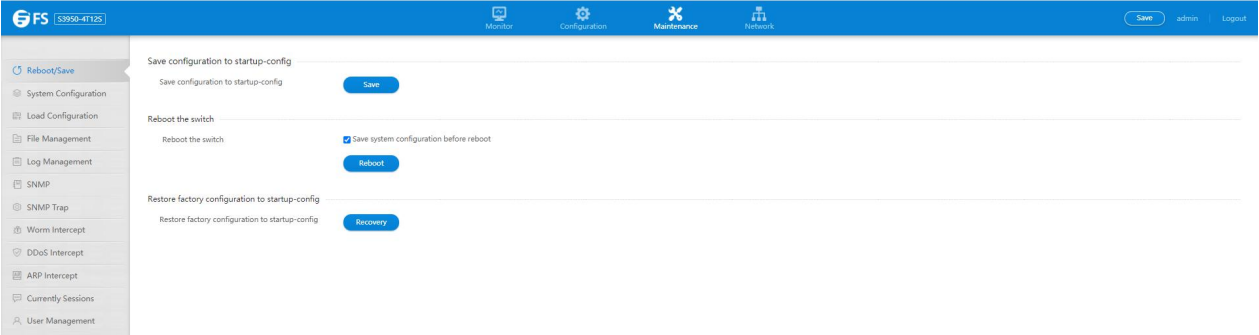
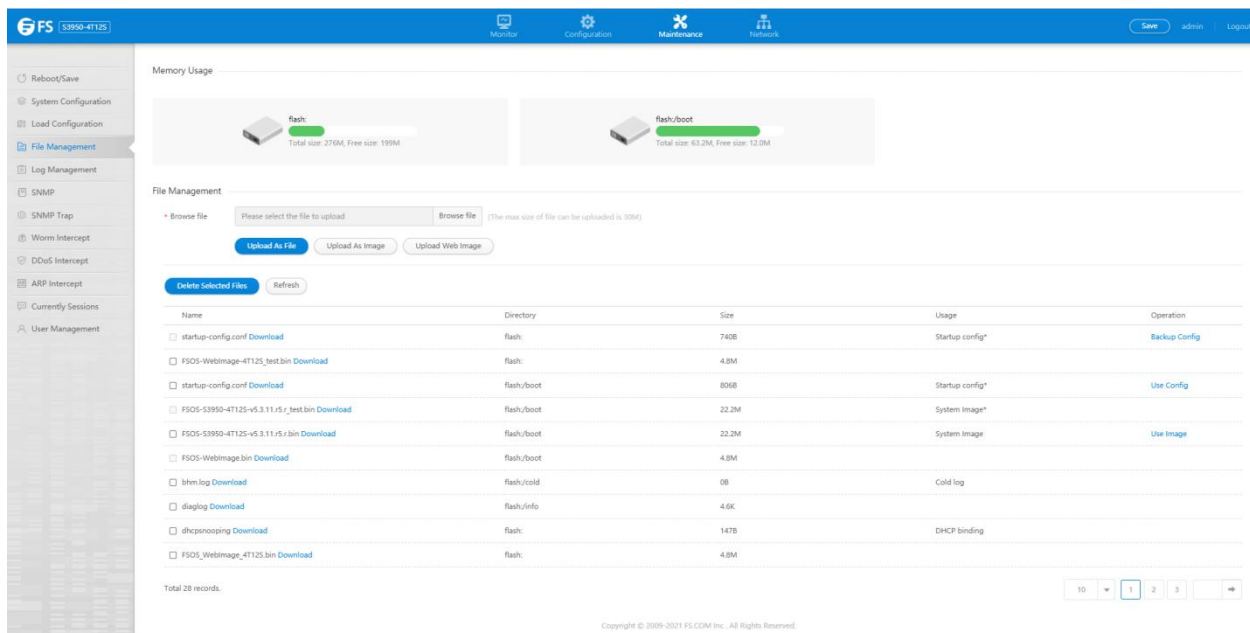


Figure 7 Device reboot page



## (6) Upgrade webImage

#After the switch restarts, repeat step (1) and you can log back into the Web interface, click “System Management>File Management” to select the webImage file to be upgraded on web. **During the upgrade process, do not close the upgrade page and power off the device.**



The screenshot displays the FSOS File Management interface. At the top, there's a navigation bar with icons for Monitor, Configuration, Maintenance, and Network. Below this, the 'Memory Usage' section shows two progress bars: 'flash' (Total size: 276M, Free size: 199M) and 'flash/boot' (Total size: 63.2M, Free size: 12.0M). The 'File Management' section includes a 'Browse file' button and a note that the maximum upload size is 10M. Below this, there are buttons for 'Upload As File', 'Upload As Image', and 'Upload Web Image'. A table lists the files available for management, with columns for Name, Directory, Size, Usage, and Operation.

Name	Directory	Size	Usage	Operation
<input type="checkbox"/> startup-config.conf Download	flash	740B	Startup config*	<a href="#">Backup Config</a>
<input type="checkbox"/> FSOS-WebImage-4T12S_test.bin Download	flash	4.8M		
<input type="checkbox"/> startup-config.conf Download	flash/boot	806B	Startup config*	<a href="#">Use Config</a>
<input type="checkbox"/> FSOS-S3950-4T12S-V5.3.11.15_i_test.bin Download	flash/boot	22.2M	System Image*	
<input type="checkbox"/> FSOS-S3950-4T12S-V5.3.11.15_i_bin Download	flash/boot	22.2M	System Image	<a href="#">Use Image</a>
<input type="checkbox"/> FSOS-WebImage bin Download	flash/boot	4.8M		
<input type="checkbox"/> bhm.log Download	flash/cold	0B	Cold log	
<input type="checkbox"/> diaglog Download	flash/info	4.6K		
<input type="checkbox"/> dhcpcpsnooping Download	flash	147B	DHCP binding	
<input type="checkbox"/> FSOS_WebImage_4T12S bin Download	flash	4.8M		

Total 28 records.

Copyright © 2009-2021 FS.COM Inc. All Rights Reserved.

Figure 8 Upgrade webImage page



 <https://www.fs.com>



The information in this document is subject to change without notice. FS has made all efforts to ensure the accuracy of the information, but all information in this document does not constitute any kind of warranty.