

Port Isolation Configuration

Content

Chapter 1 Port Isolation Configuration.....	2
1.1 Introduction to Port Isolation.....	2
1.2 Port Isolation Configuration.....	2
1.2.1 Port Isolation Configuration.....	2
1.2.2 Port-isolation Monitor and Maintenance.....	2
1.3 Port-isolation Configuration Example.....	3
1.3.1 Port-isolation Configuration Example.....	3

Chapter 1 Port Isolation Configuration

1.1 Introduction to Port Isolation

To implement port isolation, you can add different ports to different VLANs. However, this will waste the limited VLAN resource. With port isolation, the ports can be isolated within the same VLAN. Thus, you need only to add the ports to the isolation group to implement isolation. This provides you with more secure and flexible networking schemes.

On the current device:

- Currently, only one isolation group is supported on a device, which is created automatically by the system as isolation group. The user cannot remove the isolation group or create other isolation groups.
- The number of the ports an isolation group can contain is total port number-1. Because isolated ports are downlink ports. There should be at least one uplink port.

Note:

When a port in an aggregation group is configured as the member of isolation group, the other ports of the aggregation group will not be downlink ports.

1.2 Port Isolation Configuration

1.2.1 Port Isolation Configuration

Add a port to port-isolation group. The isolated port members cannot communicate with each other, but can only communicate with un-isolated port. Use **no port-isolation** command to delete a port from the isolated group.

Table 1-1 Configure port isolation

Operation	Command	Remarks
Enter global configuration mode	configure terminal	-
Enter port or port group configuration mode	interface <range> ethernet <i>interface-num<list></i>	Required
Configure port isolation	port-isolation uplink ethernet <i>interface-number</i>	Required

1.2.2 Port-isolation Monitor and Maintenance

After finishing above configuration, user can check the configurations by command below.

Table 1-2 Port-isolation monitor and maintenance

Operation	Command	Remarks
Show show port-isolation configuration	show port-isolation	On any configuration mode

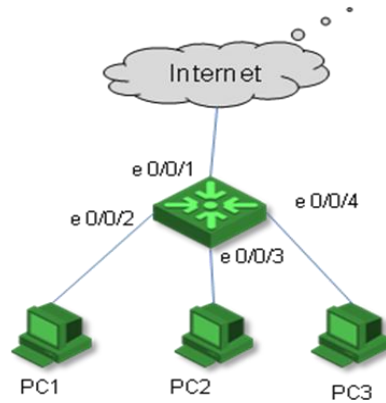
1.3 Port-isolation Configuration Example

1.3.1 Port-isolation Configuration Example

I. Network requirements

User PC1, PC2, PC3 connect to switch e0/0/2, e0/0/3, e0/0/4. Switch connects to Internet by e0/0/1. User PC1, PC2, PC3 need independent data exchange.

II. Networking diagram



III. Configuration procedure

```
Switch#configure terminal
```

```
Switch(config)# interface range ethernet 0/0/2 to ethernet 0/0/4
```

```
Switch(config-if-range)#port-isolation uplink ethernet 0/0/1
```

```
Add uplink port successfully.
```

```
Add uplink port successfully.
```

```
Add uplink port successfully.
```

```
Switch(config)#show port-isolation
```

```
downlink port :uplink port
```

```
e0/0/2. : e0/0/1.
```

```
e0/0/3. : e0/0/1.
```

```
e0/0/4. : e0/0/1.
```