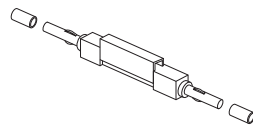


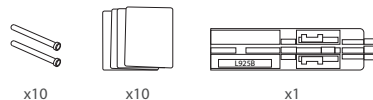
Fiber Connectors & Accessories
MC-L925B
OPTICAL FIBER MECHANICAL SPLICE
 Quick Start Guide **V1.0**

1
 Product View



2

Accessories



x10

x10

x1

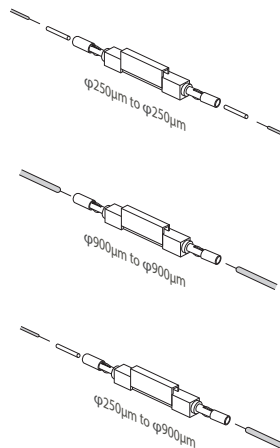
Optional (Not Included)



x1

x1

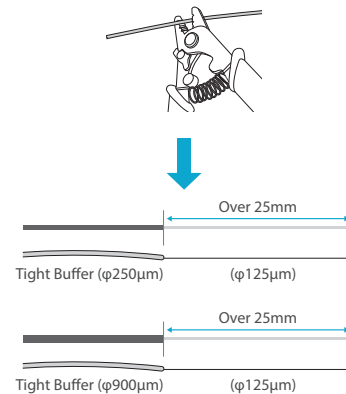
3



NOTE:

1. Support the above three connection solutions.
2. The 250μm fiber needs to use the sleeve before inserting.

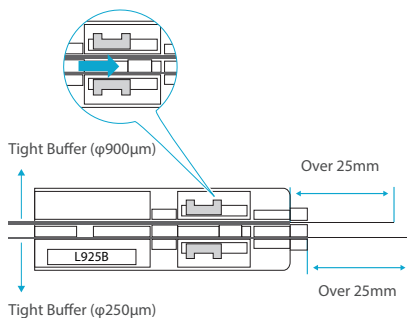
4



NOTE:

1. Take the 250μm and 900μm connection for example, then strip the 250μm and 900μm ber coating as shown above.
2. Clean the fiber after stripping.

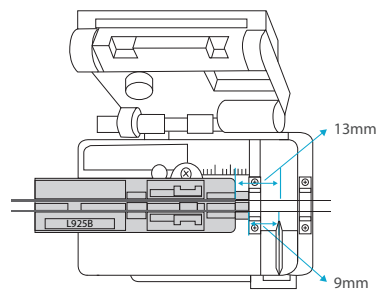
5



Length Fixed Instrument

NOTE: Place the fiber in the correct position as shown above, and the push the lock to fix the fiber.

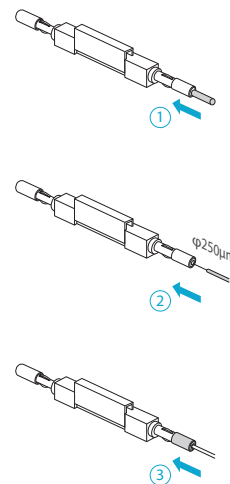
6



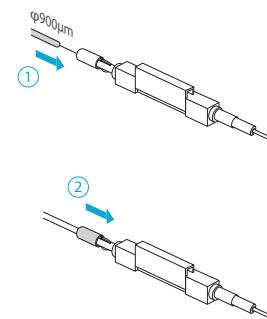
Cleaver

NOTE: Cut the two bare fiber of 125μm to be 13mm and 9mm with a cleaver and check the length as shown above.

7



8



9

