



HD IP CAMERA

Quick Operation Guide

FS-VCBOZ-4M

Thank you for using our product, please read this manual carefully before use.
Please refer to the complete user guide for more information from the CD.



1 Unpacking Inspection

1. Once receive the product, the user should open the outer packing box to check the appearance for obvious damage.
2. Please refer to the following list to check whether the accessories are complete.

Accessories list

Accessory name	Number
IP camera	1
CD (user guide)	1
Quick operation guide	1



Mind you respected user, important operations and maintenance (repair) guide are described in the attached product instruction.



Mind you respected user, uninsulated "dangerous voltage" exists, please be aware of electric shock.

Reminders:

- Power supply must pass safety certification. Its output voltage, current, voltage polarity and operating temperature must match requirement of this equipment.
- Please install lightning protection devices or cut off the power in thunder and lightning conditions.
- To capture high-quality video and pictures, please make sure the network connection is stable and smooth.

2 Product Notes

Thank you for buying our IP camera, please read the following instructions carefully to learn the related operation.

1. Before using the camera, please read this guide book carefully and make sure the power supply is normal.
2. Users should follow the manufacturer's instructions to install device professionally and must not dismantle the equipment without permission.
3. To prevent the sensor pull light phenomenon, prohibit putting the lens under bright light for a long time.
4. If the lens is dirty or foggy, please use a dry soft cloth to clean it.
5. The equipment must not be installed under the air door of air conditioner, otherwise the lens will become blurry and condenses into moisture.
6. When install, repair or clean the equipment, please make sure the power has been turned off.
7. Stay away from high temperature and heat source environment, pay attention to ventilation.
8. To avoid damage and electrical shock, non-professionals are forbidden to dismantle the equipment.
9. Prohibit putting this equipment to work in strong magnetic field and laser beam environment.
10. If there is lightning during installation, please take grounding lightning protection measures.
11. Damages to the machine and all other economic losses caused by human are at your own risk.

3 Main Features

1. Ultra-low illumination and high-performance real-time screen, support ABLC image effect.
2. Support WEB configuration, and IE network Monitoring.
3. Support dual-stream.
4. Support OSD, color, brightness, saturation and digital zoom settings.
5. Support real-time video transmission, video motion detection and privacy masking.
6. Support remote monitoring, ONVIF2.4 protocol and IR-CUT switch.
7. Support P2P network platform.

4 Parameter Description

Description	A 4MP IP camera
Sensor Type	1/3" OV High-resolution CMOS Sensor
S/N Ratio	52dB
Shutter	1/25—1/10000s (adjustable)
WDR	Support
Lens	2.8mm/3.6mm/4mm/6mm/8mm/2.8-12mm (adjustable), Lens optional
Day/Night	ICR-infrared filter
Video Compression	H.264/H.265/JPEG/AVI/MJPEG
Max Image Size	2560 × 1440
Frame Rate	4Mp 20fps
Image Setting	Brightness, contrast, saturation, sharpness can be adjusted
Storage Function	FTP, Local, NVRSMTP, Cloud storage
Onvif	Onvif 2.4
Intelligent Alarm	Motion detection, Privacy
Protocol	TCP/IP, ICMP, HTTP, HTTPS, FTP, DHCP, DNS, DDNS, RTP, RTSP, RTCP, NTP, SMTP
General Function	Tri-Stream/Mirror/3D DNR/HDR
Communication Interface	RJ45 (10M/100M) Adaptive Ethernet port
Audio Input (optional)	1CH, MIC IN/Line IN
Temperature	-20 C ~ 60 C
Humidity	0%-90%RH Without Condensation
Power	DC 12V±10% /PoE (802.3af)

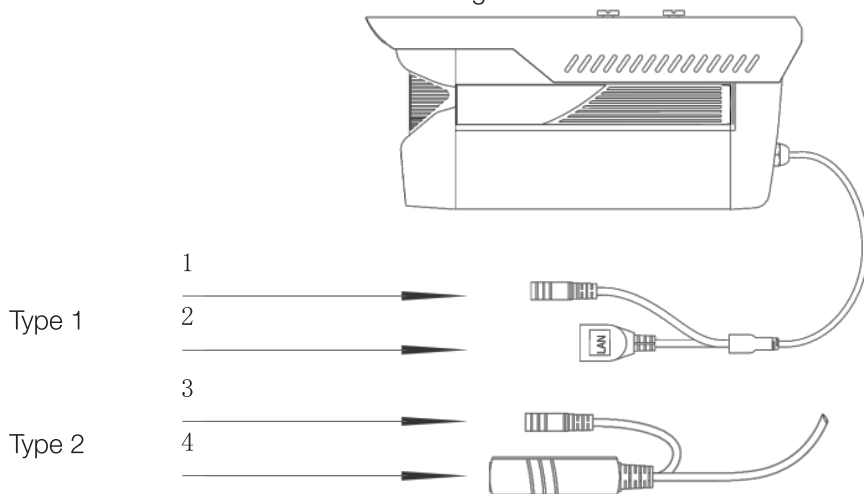
5 Camera Structure

Illustration

The following structure diagram is used as an example for the different appearances of different models.

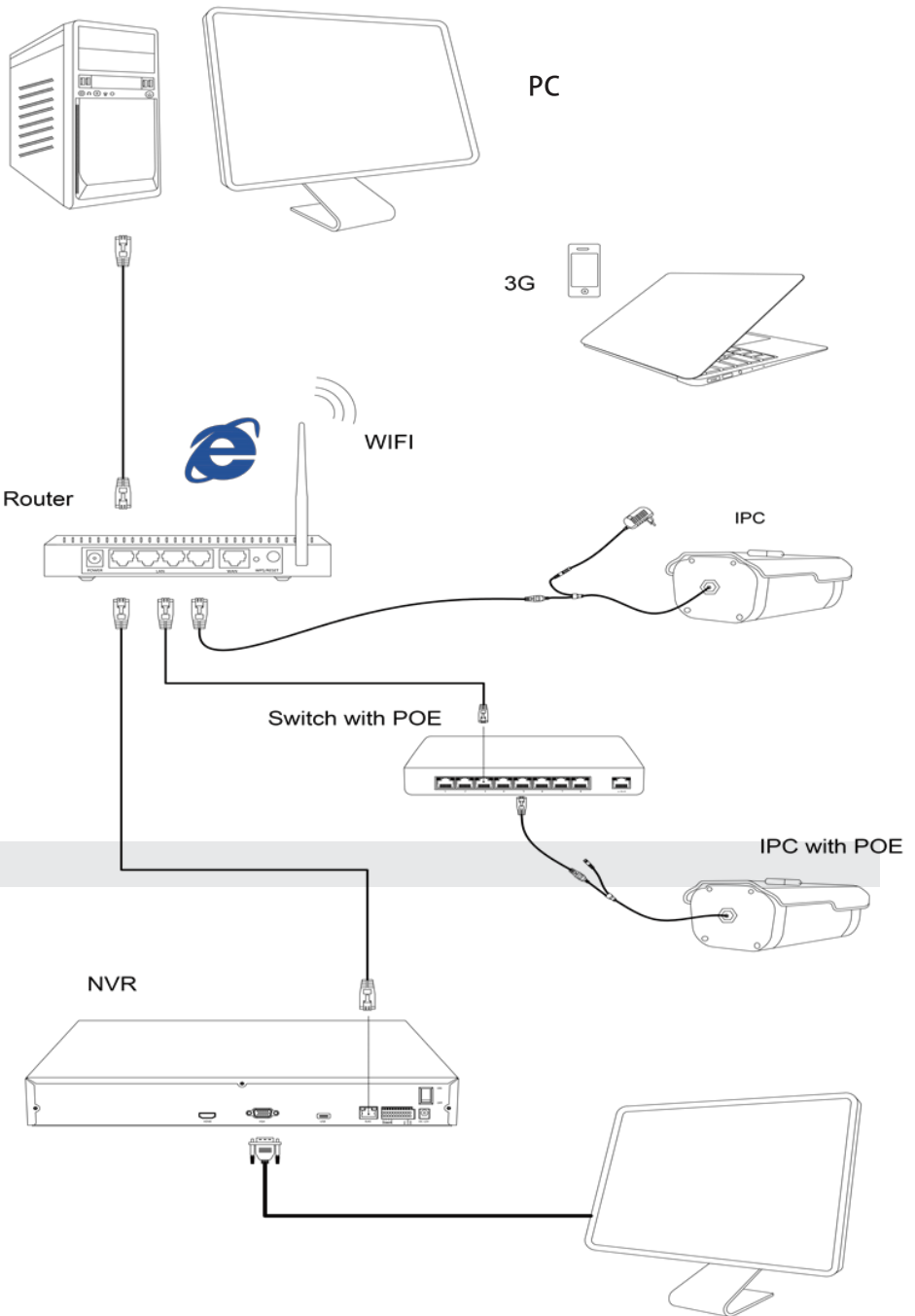
1. Input interface

External camera structure diagram



Sequence NO.	Interface	Functional Description
1	Power connector	12V DC input power
2	Network interface	Network data transmission
3	Power connector (for stand-by power)	12V DC input power
4	Network interface	Network data transmission, 12V DC input power

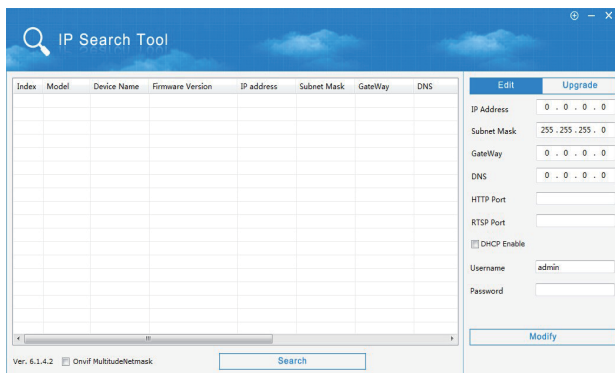
2. Device connection



6 Quick Configuration Tool

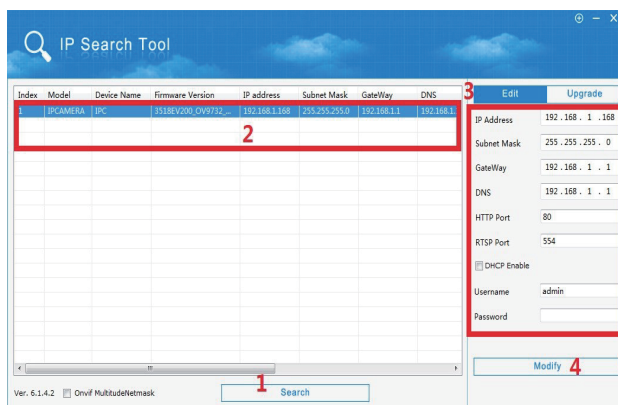
1. Install client software

Find out the document “IP Search.exe”, make a copy in the computer and double click to open it. As shown in the picture:



2. Change the camera's IP settings

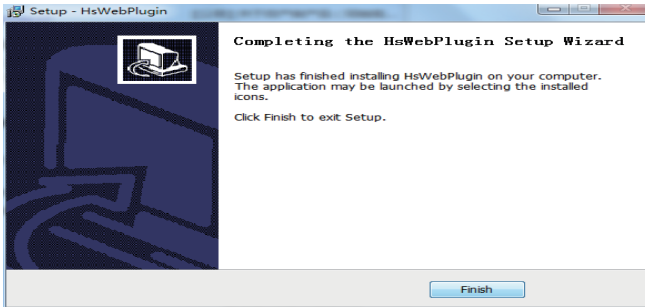
Make sure IP camera is connected, and click Search to search the IP camera, find and click it, and then change the IP settings. Finally, click Modify IP to confirm the change. As shown in the picture:



7 IE Connection

1. Browser settings

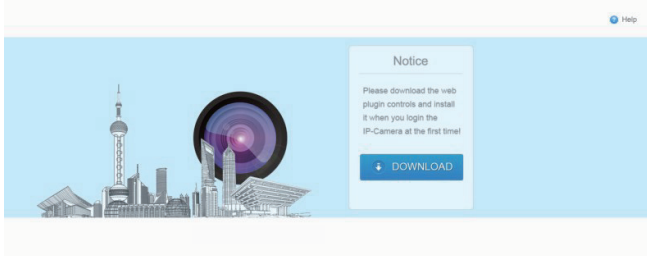
Open your IE browser, Click Tool→ Internet Option→ Security→ Customized Level→ Active X Control and Plug-in, select all "Enable".



2. Enter URL : <http://192.168.1.168>

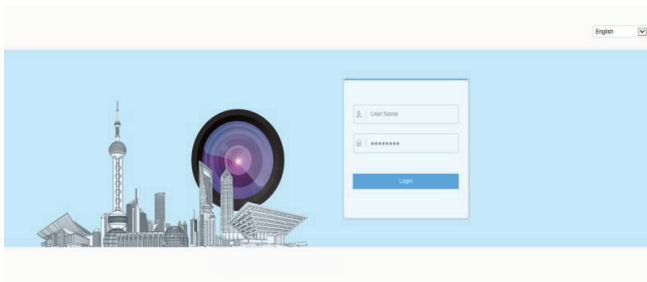
3. Install control

An OCX control is needed in your computer for the first IP camera installation, click the pop up tip "OK" and install OCX control. As shown in the picture:



4. User login

Reopen the web browser and enter correct user name and password. Both the default user name and password are admin.



8 Computer Client Connection

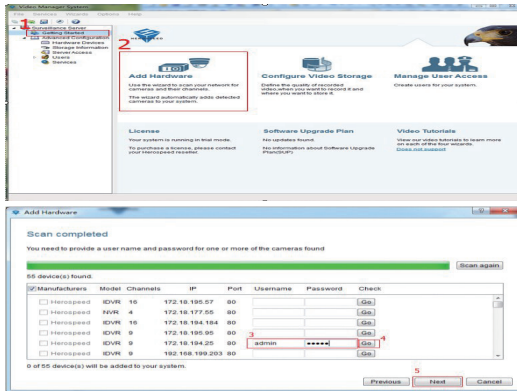
1. Install computer client software VMS

Find out the document “VMS Setup.exe”, make a copy in your computer and double click to install it.

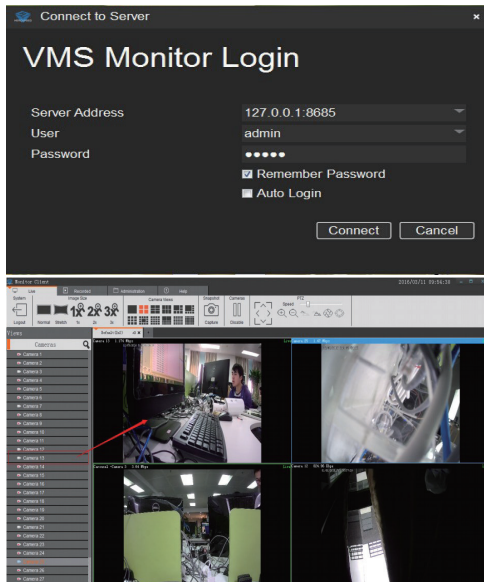
2. Add hardware

Open “VMS Management” and search for device in LAN, or add device manually.

※ Search to add device: VMS Management→Getting Started→ Add Hardware→ Scan for Hardware→ Query → Select Device



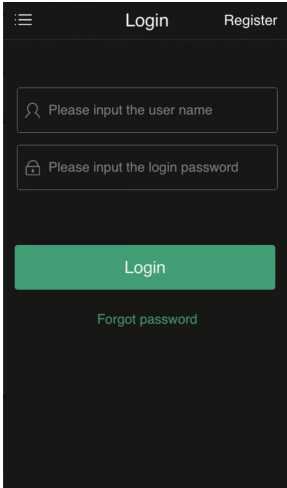
※ Preview Video: Open VMS Monitor Client→Login VMS Client→Live Video



9 Mobile Client Connection

1. Install mobile monitoring software

Enter URL on your phone: www.freeip.com, download and install mobile monitoring software "FREEIP PRO".



2. Add device

Click "Add Device" And you can directly scan the QR code to get the device serial number or manual input device serial number.

