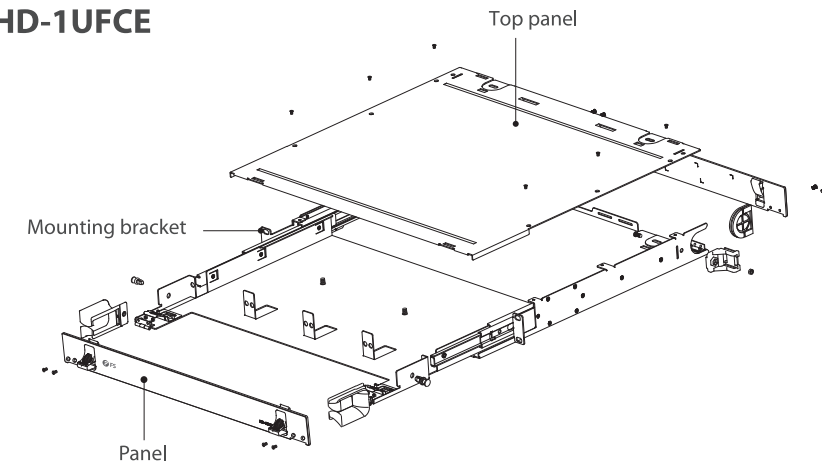
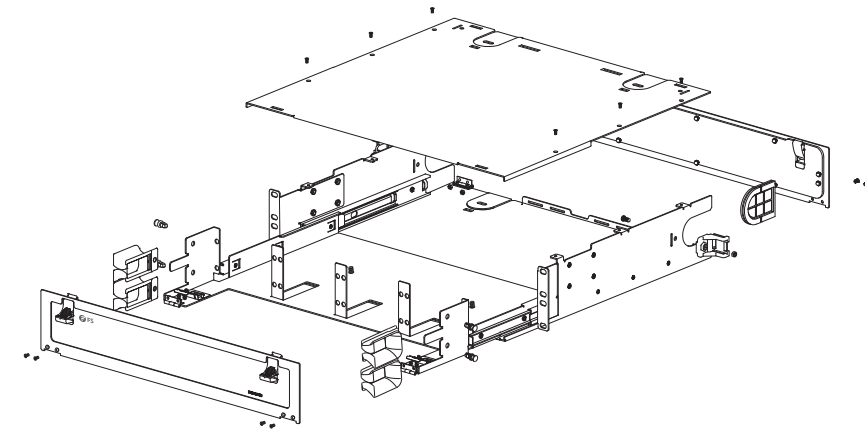


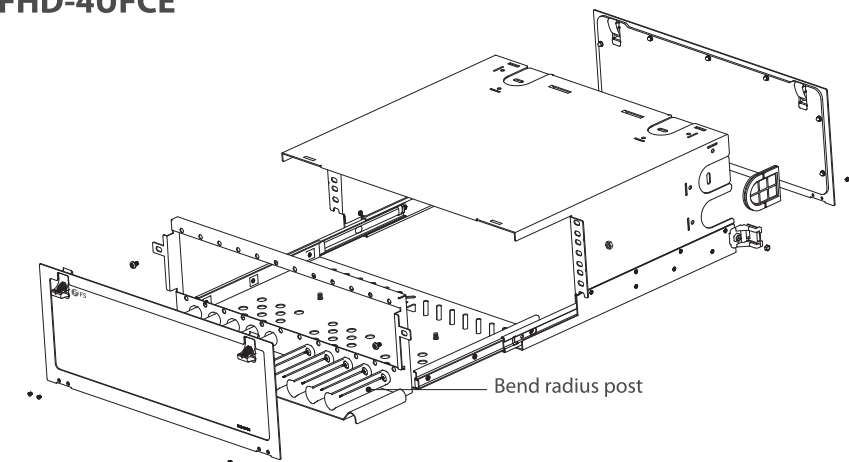
Assembly View FHD-1UFCE



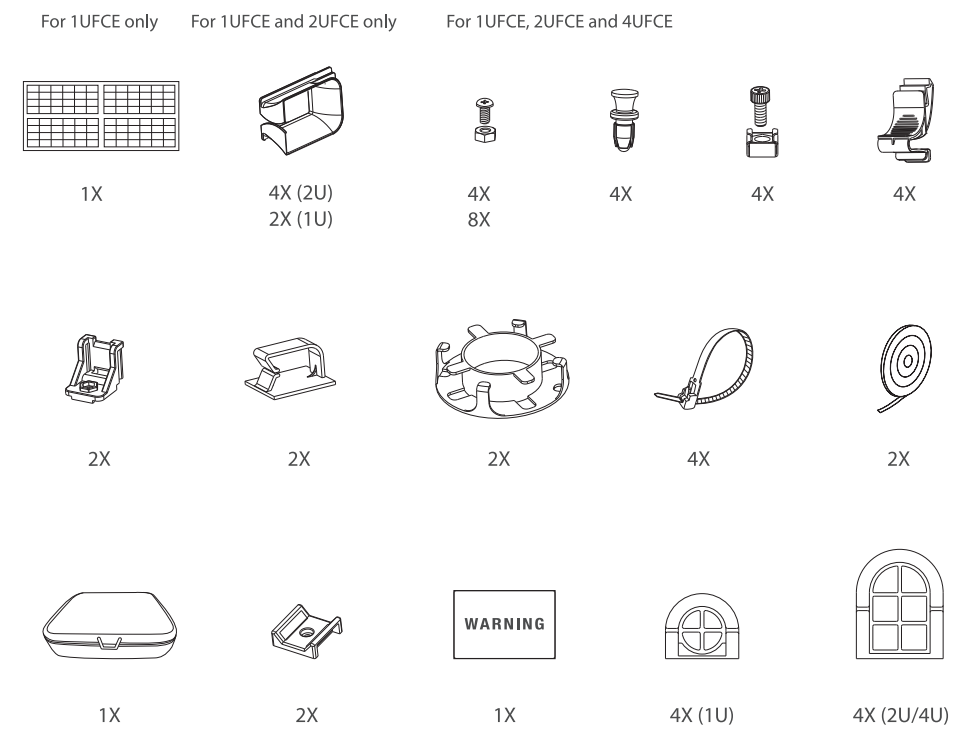
FHD-2UFCE



FHD-4UFCE



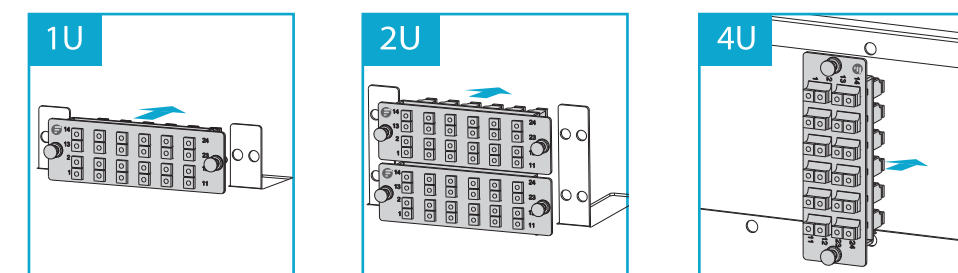
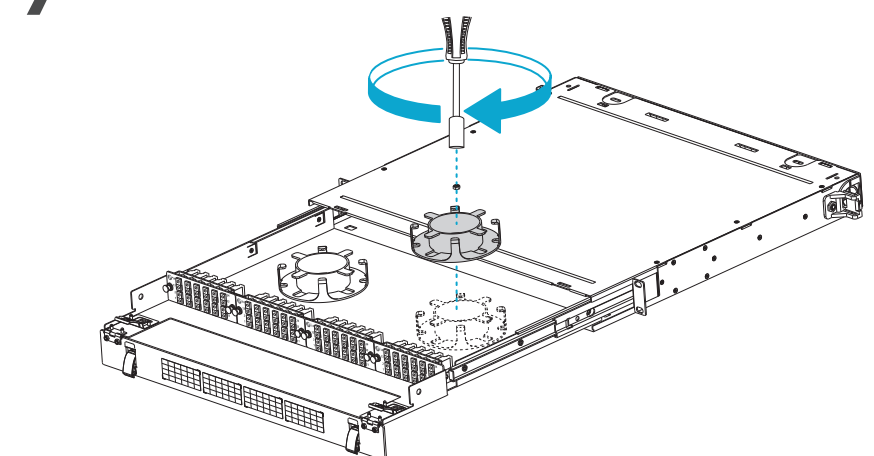
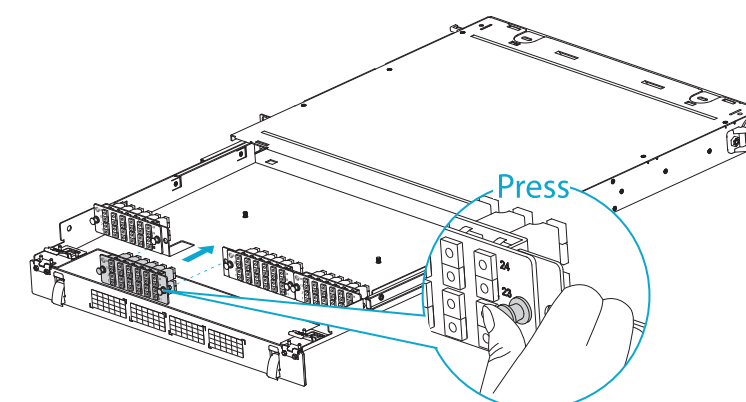
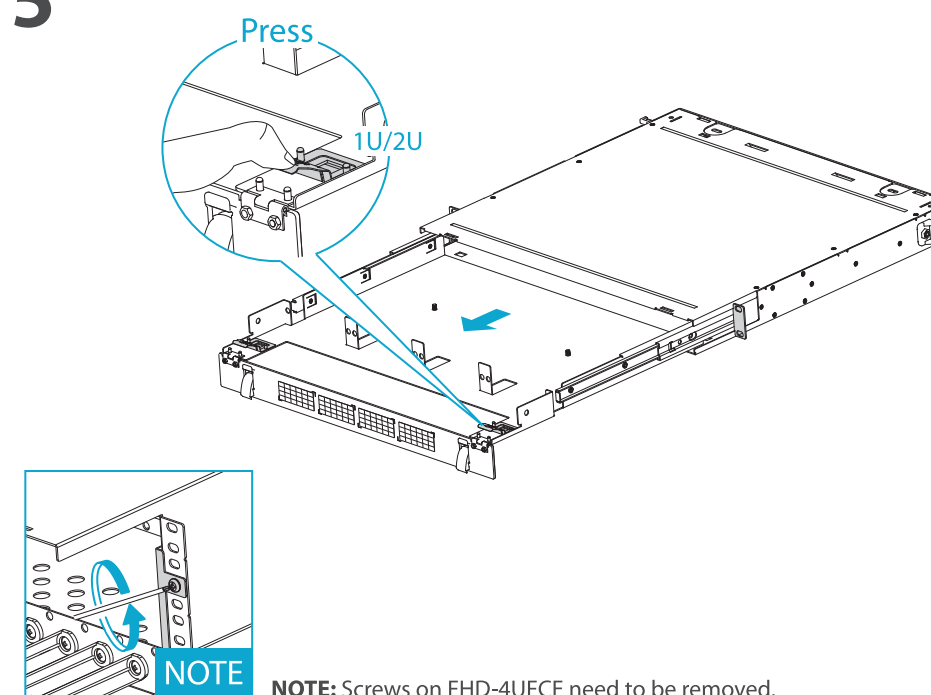
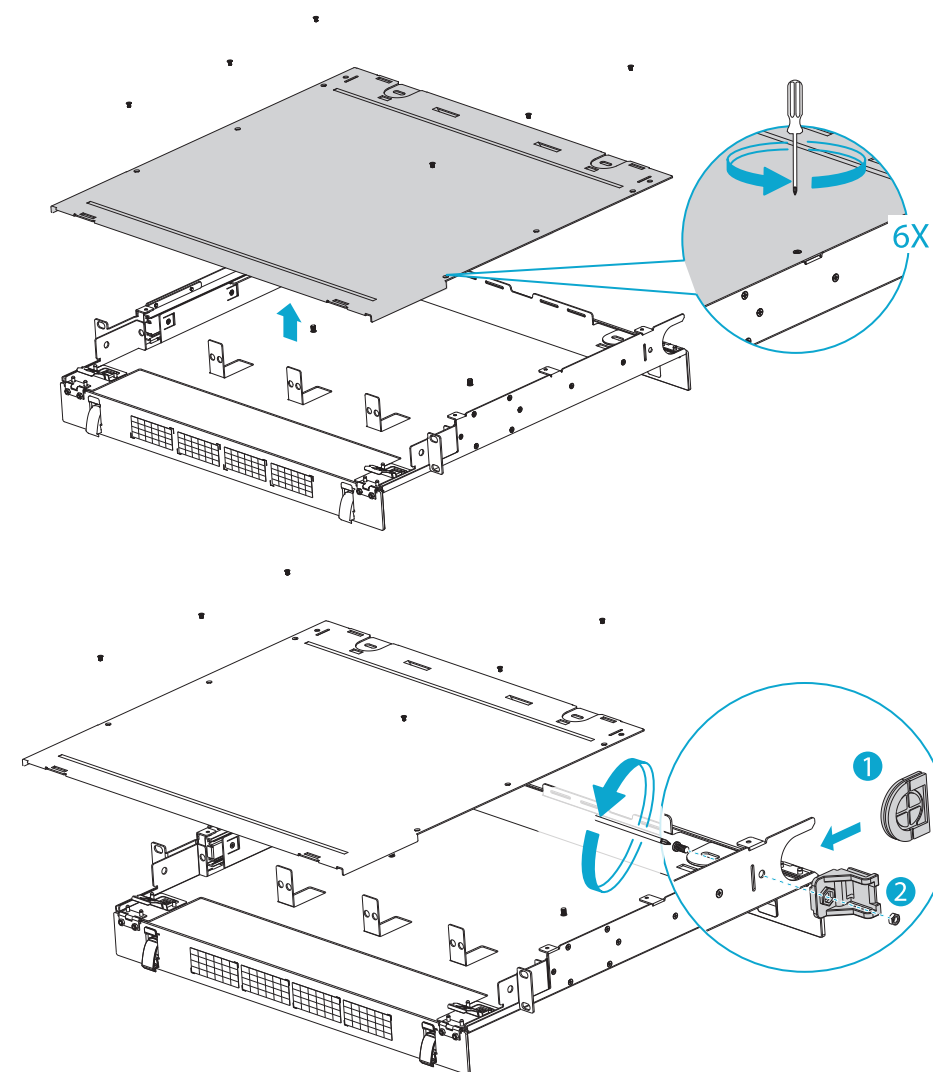
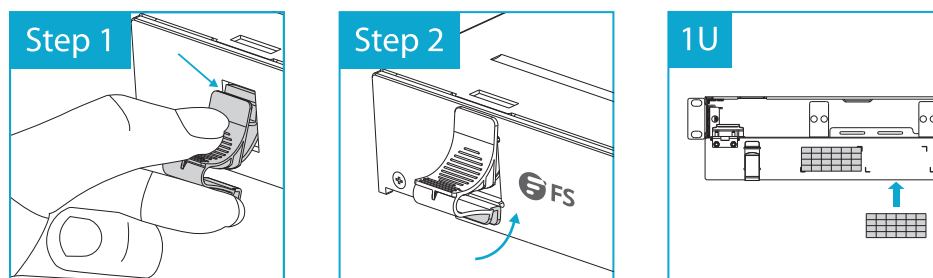
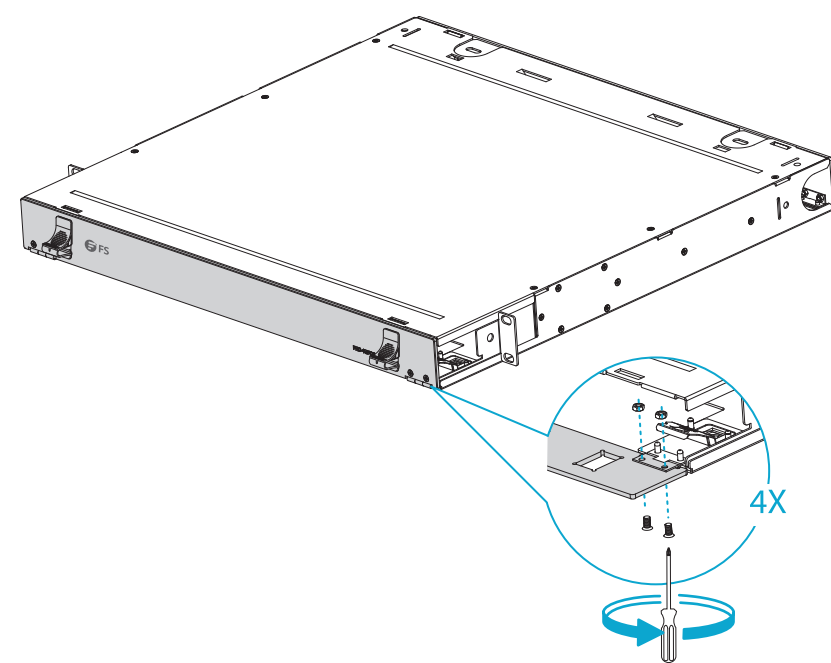
Accessories



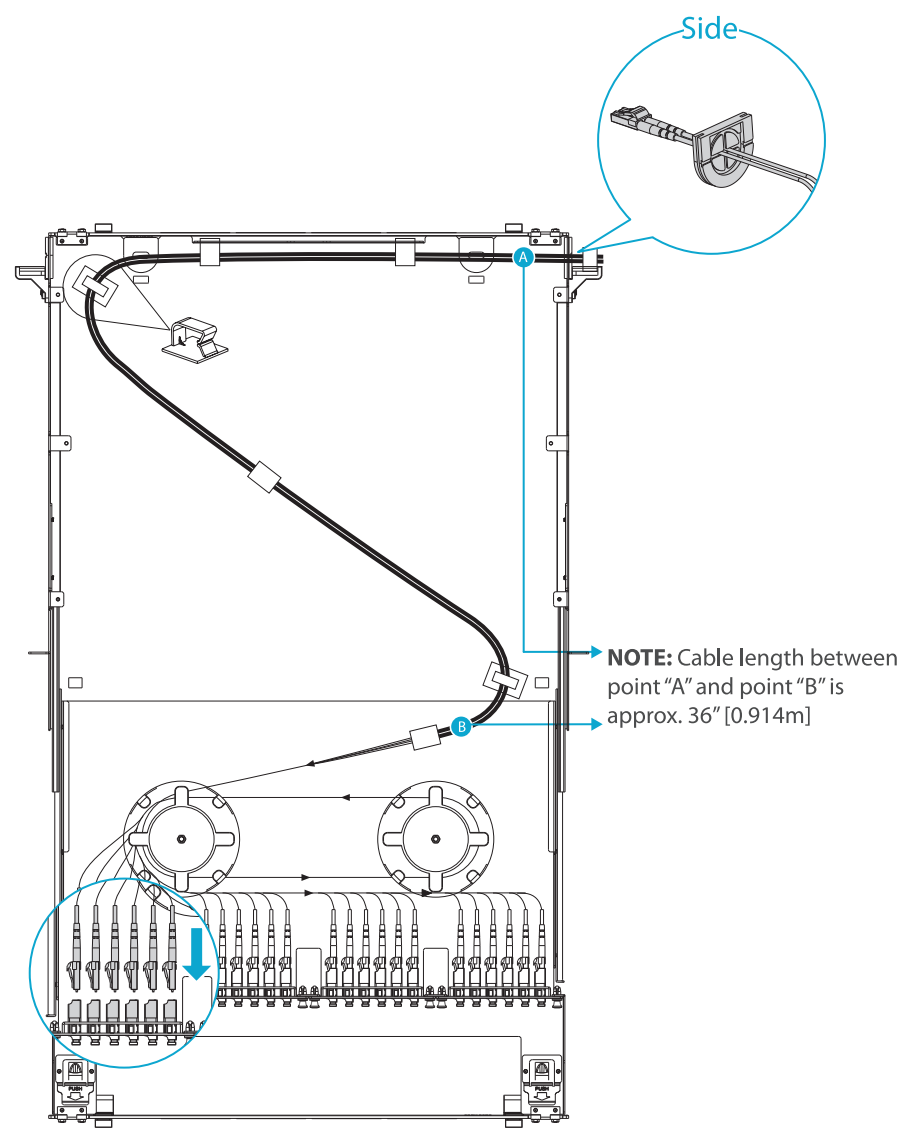
Optional (Not Included)



FHD-Series FHD-FCE FIBER ENCLOSURE Quick Start Guide V1.0

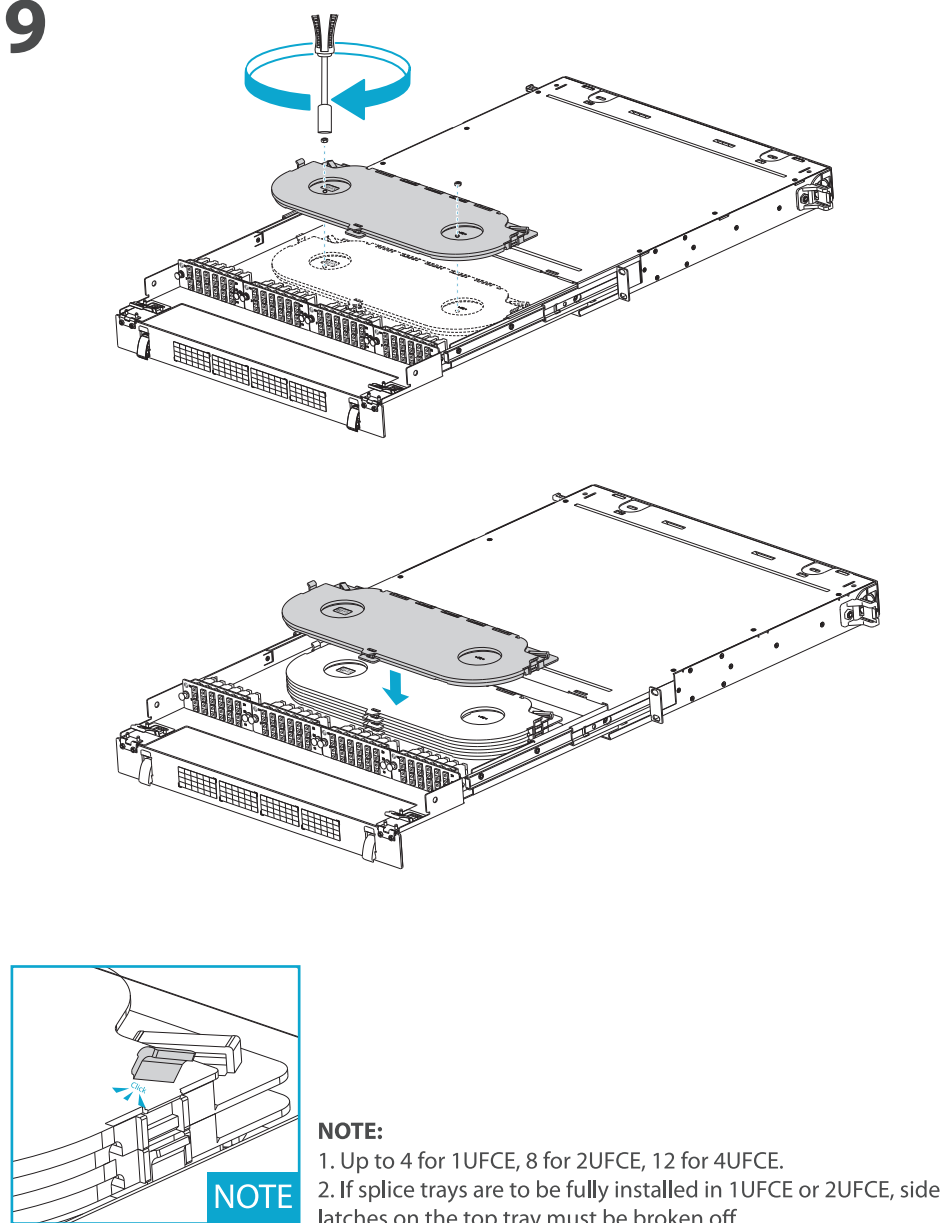


8



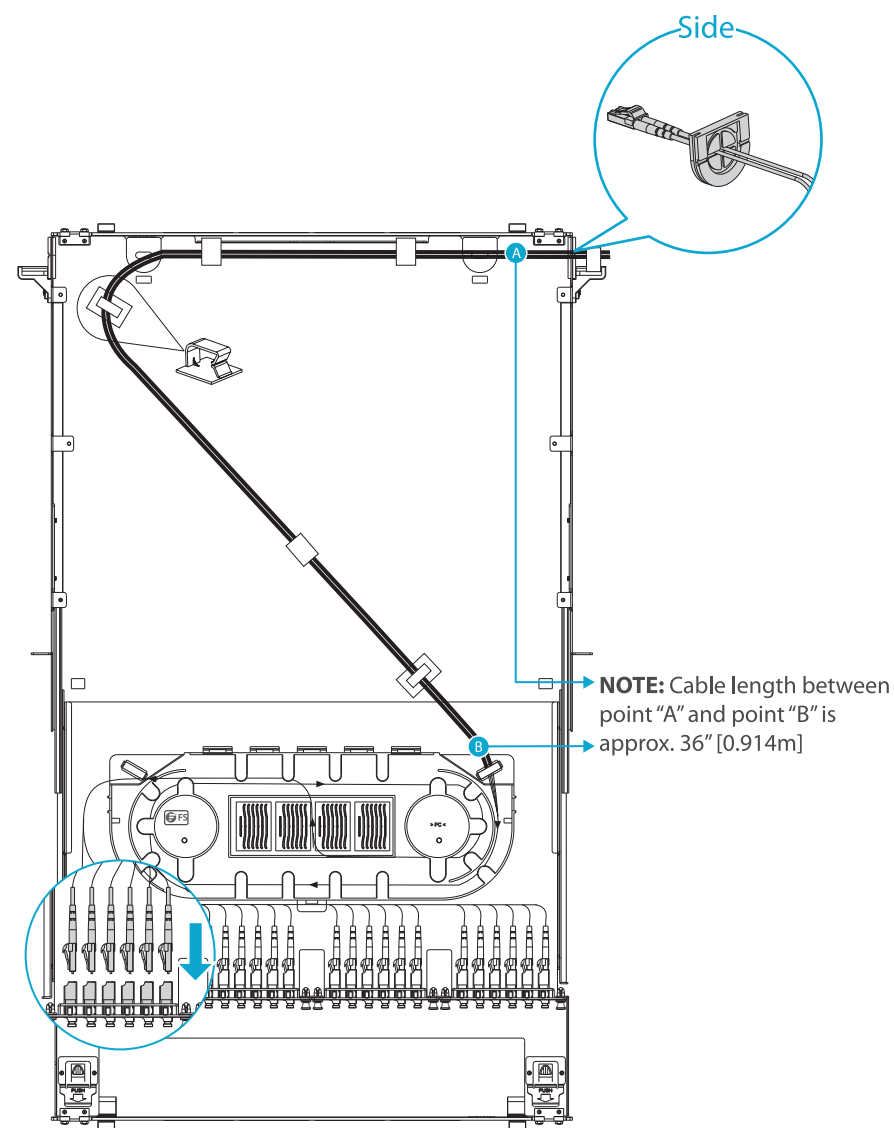
NOTE:
1. The location of the adhesive bevel entry clips is shown for reference.
2. The grommets need to be properly cut out before use.

9



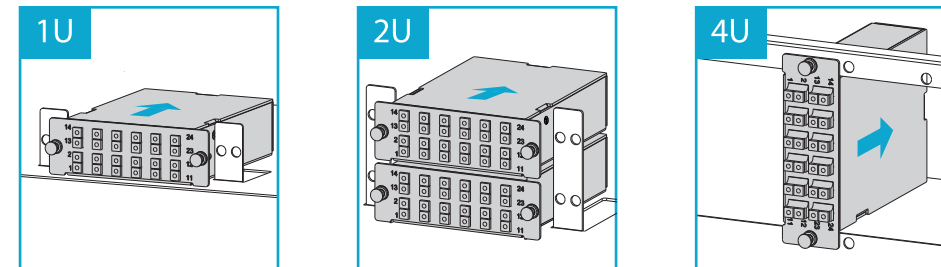
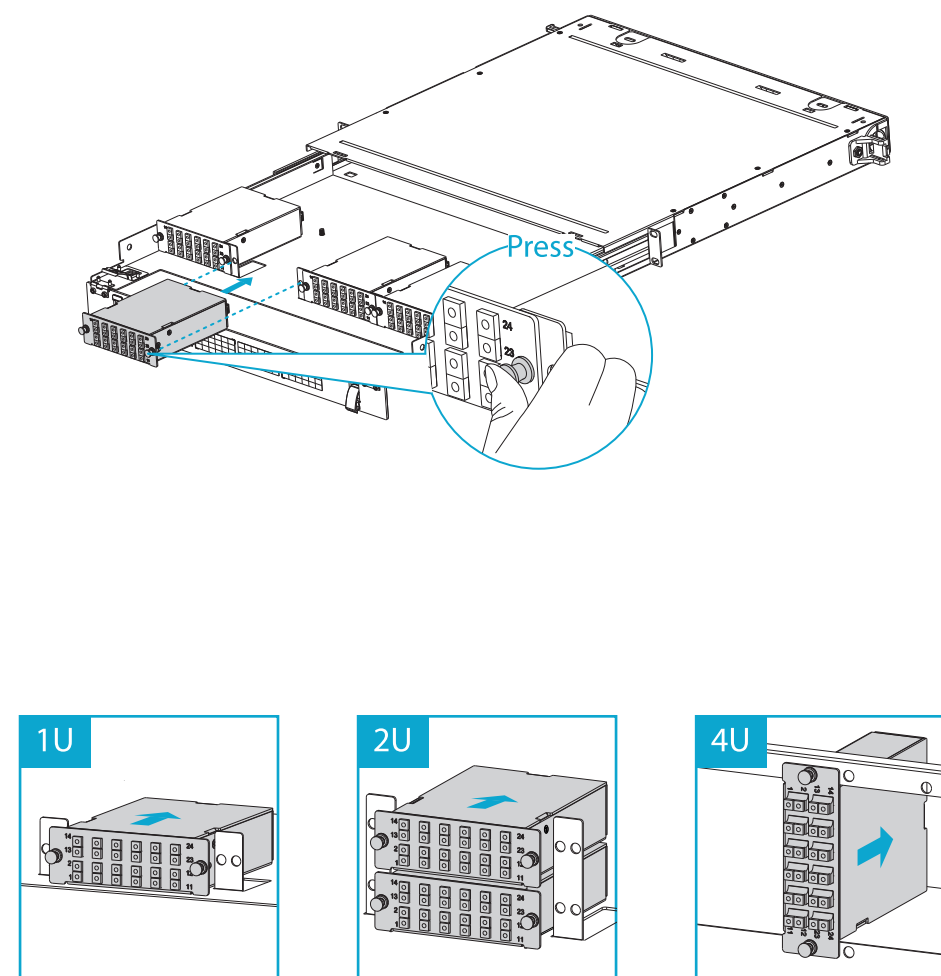
NOTE:
1. Up to 4 for 1UFCE, 8 for 2UFCE, 12 for 4UFCE.
2. If splice trays are to be fully installed in 1UFCE or 2UFCE, side latches on the top tray must be broken off.

10

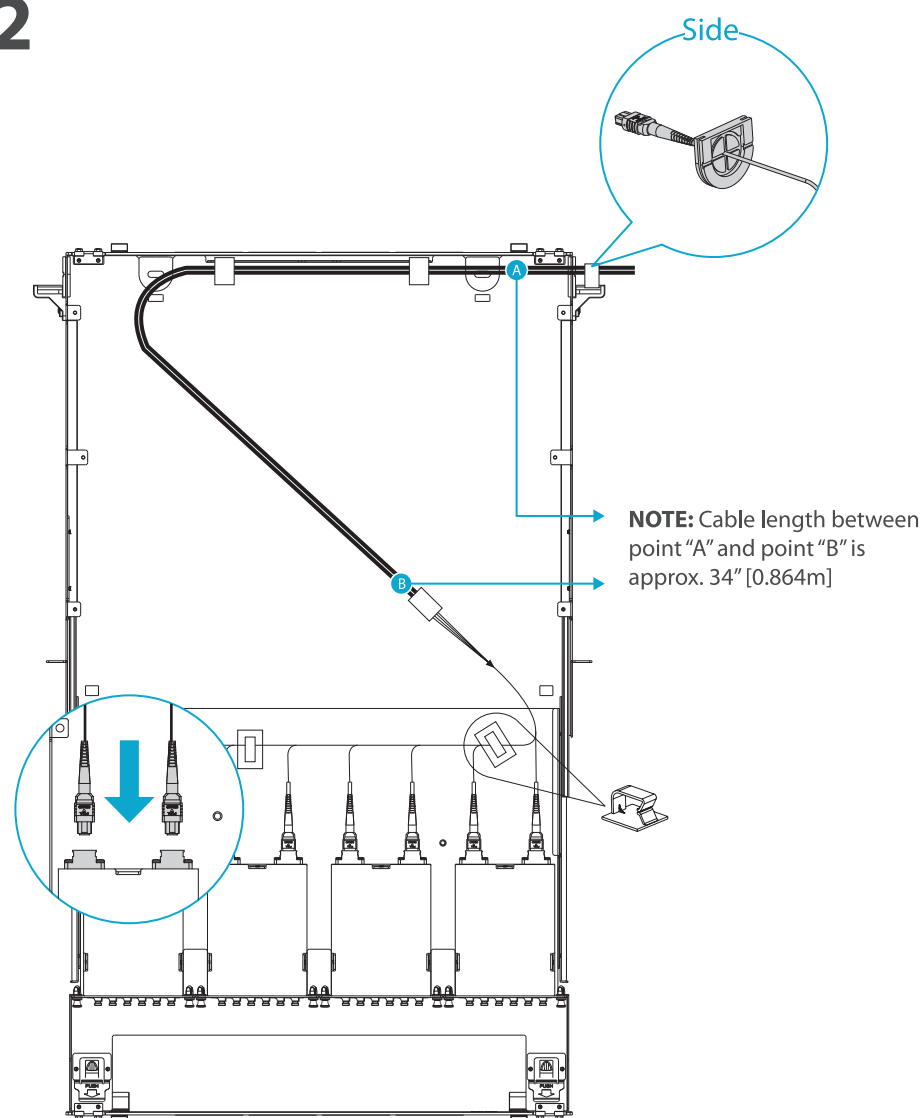


NOTE:
1. The location of the adhesive bevel entry clips is shown for reference.
2. The grommets need to be properly cut out before use.

11



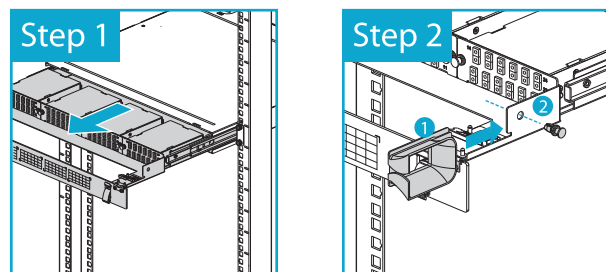
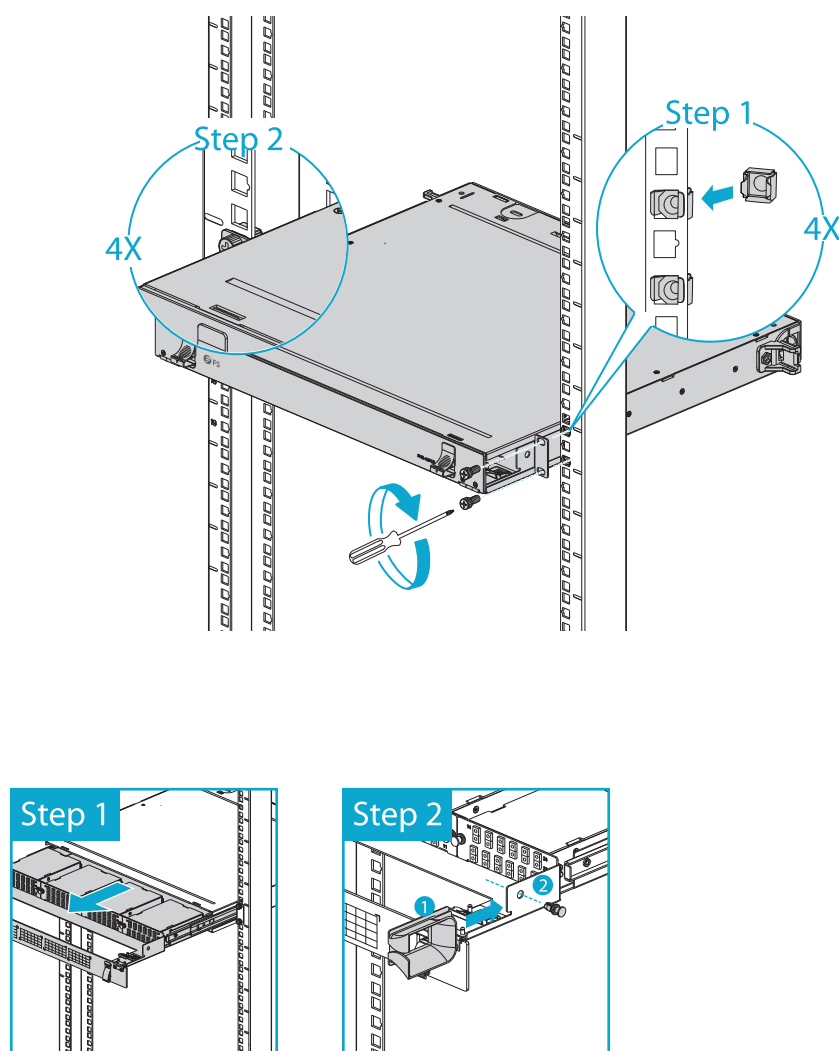
12



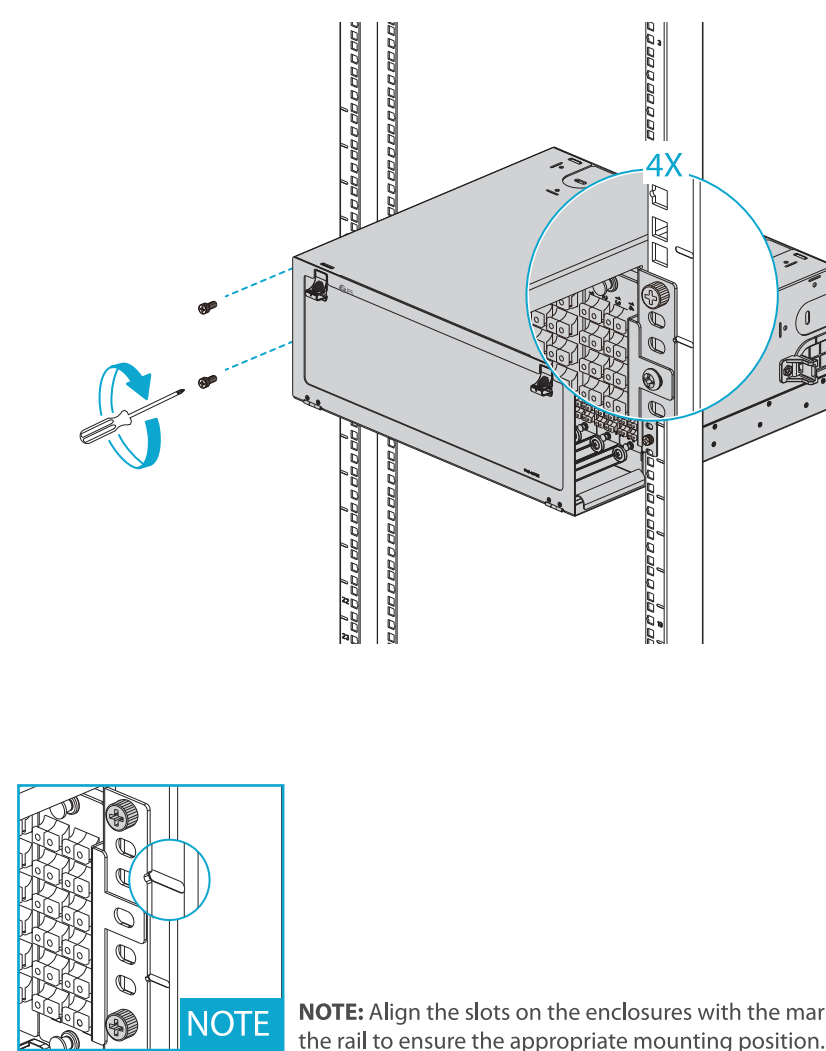
NOTE:
1. The location of the adhesive bevel entry clips is shown for reference.
2. The grommets need to be properly cut out before use.

13

FHD-1UFCE/FHD-2UFCE



FHD-4UFCE



NOTE: Align the slots on the enclosures with the mark pins of the rail to ensure the appropriate mounting position.