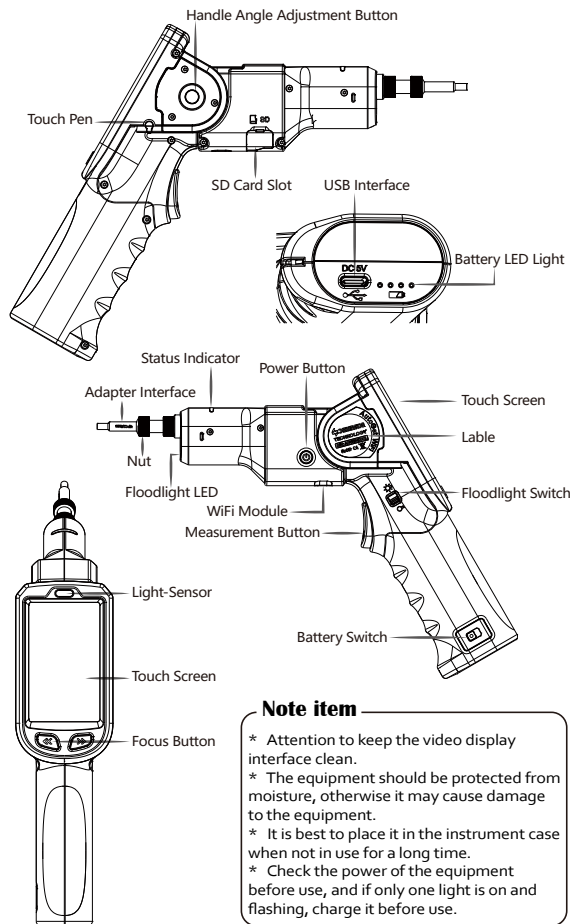


AutoGet WiFi

Intelligent Wireless Portable Fiber End Face Microscope

Product Manual

Product Description



Note item

- * Attention to keep the video display interface clean.
- * The equipment should be protected from moisture, otherwise it may cause damage to the equipment.
- * It is best to place it in the instrument case when not in use for a long time.
- * Check the power of the equipment before use, and if only one light is on and flashing, charge it before use.

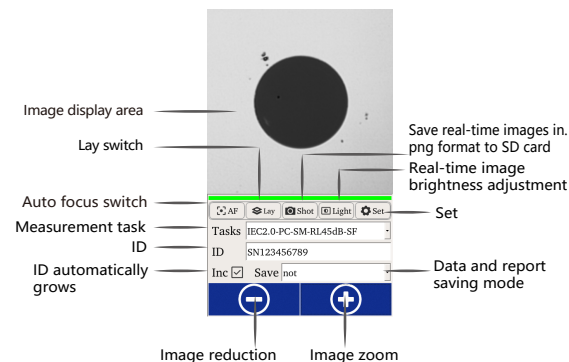
Specifications

Item	Parameter
Visual range	250μm*250μm
Power	2.5W
Power adapter	DC 5V/2A
Charging time	4h
Usage time	>5h
Size	281mm*201mm*57mm
Weight	565g

Hardware features

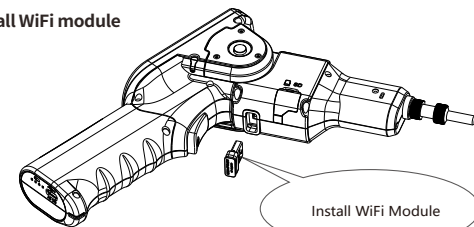
- * Perfect adapter interface series, to meet a variety of testing needs.
- * High-quality optical components, high-quality image quality for accurate end face automatic inspection.
- * Support multiple storage methods: SD, network.
- * High capacity rechargeable and replaceable battery, charging for 4 hours, over 5 hours for using.
- * Humanized front lighting is conducive to the operation of various environments.
- * Equipped with the high impact resistance of the protective cap, protective equipment, extend equipment life.
- * Convenient camera button, easy to use.

Software Introduction

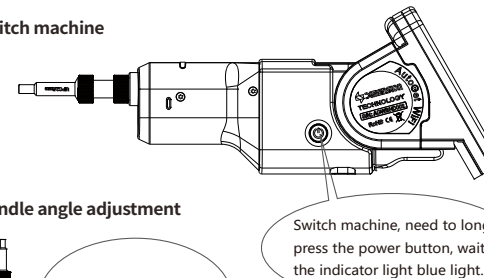


Operation Introduction

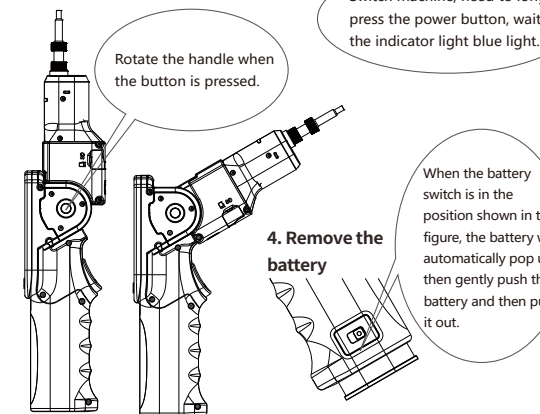
1. Install WiFi module



2. Switch machine



3. Handle angle adjustment



4. Remove the battery

When the battery switch is in the position shown in the figure, the battery will automatically pop up, then gently push the battery and then pull it out.

Service Policy

Warranty Term

We warrant that for a period of one (1) year from the Shipping Date, the product purchased by the customer shall be free of defects in material and workmanship under normal authorized use consistent with the product instructions.

Warranty Content

In the event that we receive notice during the warranty period that any part does not conform to its warranty, our sole and exclusive liability shall be, at its sole option, to either repair or replace the non-conforming part in accordance with this limited warranty.

Warranty Exception

No warranty will apply if

- (1) Device damage caused by the wrong operation;
- (2) Unconventional repair or modification;
- (3) The causes of failure outside of the instrument;
- (4) Used in high temperature and humidity, corrosive gas, harsh conditions such as vibration;
- (5) Fires, earthquakes and other natural disasters as well as the pollution caused by radioactive substances and harmful substances, and when the other force majeure such as war, riot, crime;
- (6) Consumables and consumable parts.

Important Safety Information

- * Before using this equipment, please read all safety information to ensure correct and safe use.
- * Use of an adapter, charger, or battery that is not approved by the manufacturer may cause a fire, explosion, or another hazard. Please use the accessories approved by this manufacturer.
- * Do not replace the battery yourself to avoid damage to battery or equipment. The battery can only be replaced by a service center.
- * Please charge with the manufacturer's specific charger, to avoid leakage, fire, damage to the equipment and charger.
- * If charging is complete, disconnect the charger from the device and unplug the charger from the power outlet. Continuous charging time should not exceed 12 hours.
- * Please follow the local regulations to handle the battery. If the battery is improperly handled, it may cause the battery to fire and explode.
- * The battery is prohibited from impact, squeezing or putting in a fire. Do not continue to use it if it is experiencing severe expansion.
- * Do not repair this equipment yourself.
- * Please do not connect any unassigned equipment.

To learn more

You can visit www.dimension-tech.com for more information about the product.