

AP-W6D2400C/AP-W6T6817C

## **ENTERPRISE WI-FI 6 ACCESS POINT**

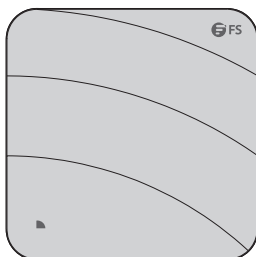
Quick Start Guide **V1.0**

# Introduction

Thank you for choosing the enterprise Wi-Fi 6 access point. This guide is designed to familiarize you with the layout of the access point and describes how to deploy the access point in your network.



AP-W6D2400C



AP-W6T6817C

## Accessories

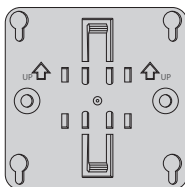
AP-W6D2400C



Screw x2



Screw Anchor x2



Mounting Bracket x1

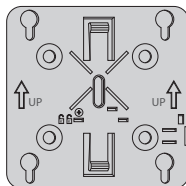
AP-W6T6817C



Screw x4



Screw Anchor x4

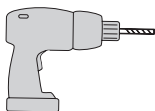


Mounting Bracket x1



Hidden Lock's Key x1

## Optional (Not Included)



Portable Hammer Drill x1



Rubber Hammer x1



Screwdriver x1

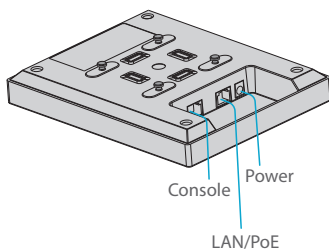


Marker x1

# Hardware Overview

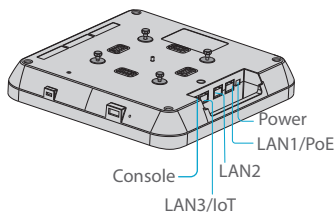
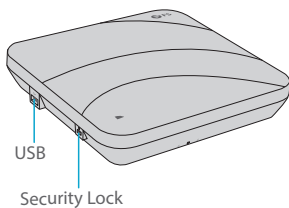
## Ports

AP-W6D2400C



Ports	Description
LAN/PoE	LAN/PoE port
Console	An RJ45 console port for serial management
Power	48V DC power port

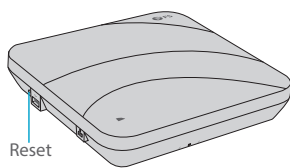
AP-W6T6817C



Ports	Description
LAN1/PoE	LAN1/PoE port, PoE+ capable
LAN2	LAN2 port
LAN3/IoT	LAN3/IoT port
Security Lock	Anti-theft lock hole
Console	An RJ45 console port for serial management
USB	A USB management port for software and configuration backup and offline software upgrade
Power	48V DC power port

## Button

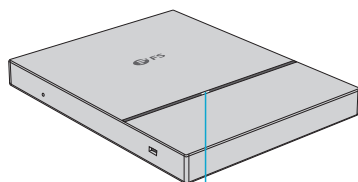
AP-W6D2400C/AP-W6T6817C



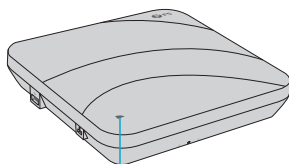
Button	Description
Reset	Restart: Press the Reset button for less than three seconds.
	Restore to Factory Default Settings: Press and hold the Reset button for more than three seconds.

## LED

AP-W6D2400C/AP-W6T6817C



LED



LED

FIT AP:

Status	Frequency	Description
Off	N/A	The AP is not receiving power, or the AP is in Do Not Disturb mode, which can be disabled by software.
Blinking Green	3Hz	UBoot program initialization in progress.
Solid Green	N/A	Main program initialization in progress.
Blinking Red	3Hz	Initialization is complete, but the Ethernet link is down.
	2Hz	Locates the AP-W6D2400C.
Double Blinking Red	3Hz (on and off for 2 cycles alternately)	Locates the AP-W6T6817C.
Solid Orange	N/A	Initialization is complete, and the AP is establishing a CAPWAP connection with a wireless LAN controller.
Blinking Orange	3Hz	Firmware upgrade in progress. Do not power off.
Solid Blue	N/A	Normal operation, but no wireless clients are associated with the AP.
Blinking Blue	3Hz	Normal operation, at least one wireless client is associated with the AP.

FAT AP:

Status	Frequency	Description
Off	N/A	The AP is not receiving power, or the AP is in Do Not Disturb mode, which can be disabled by software.
Blinking Green	3Hz	UBoot program initialization in progress.
Solid Green	N/A	Main program initialization in progress.
Blinking Red	3Hz	Initialization is complete, but the Ethernet link is down.
Solid Blue	N/A	Normal operation, but no wireless clients are associated with the AP.
Blinking Blue	3Hz	Normal operation, at least one wireless client is associated with the AP.



**NOTE:** Hz indicates the number of times a flashing light blinks per second.

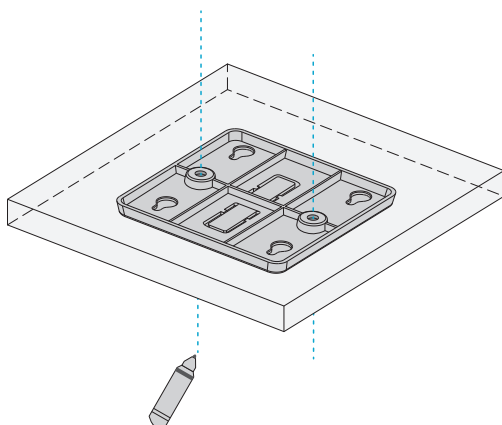
## Installation Requirements

- Install the AP indoors.
- Make sure the floor of the installation site is dry and flat.
- Place the AP in a dry area and avoid liquid intrusion.
- Keep the AP and installation tools away from walkways.
- Do not power the AP during installation.
- Install the AP in a well-ventilated location.
- Keep away from high voltage cables.
- Keep the AP clean and dust-free.

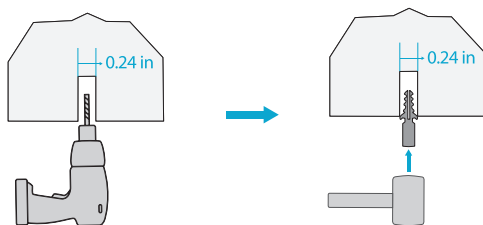
# Mounting the Access Point

## Ceiling Mount

AP-W6D2400C

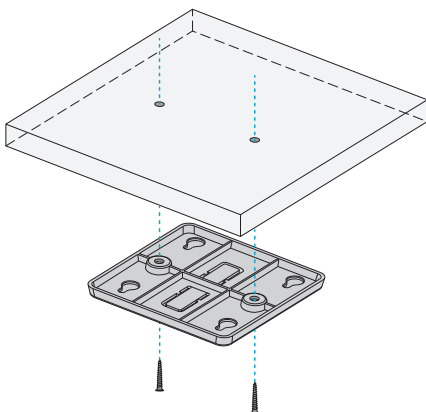


1. Position the mounting bracket at the desired location on the ceiling. Use a marker to mark the two mounting holes.
2. Drill holes with a diameter of 6 mm (0.24 in) in the marked locations.

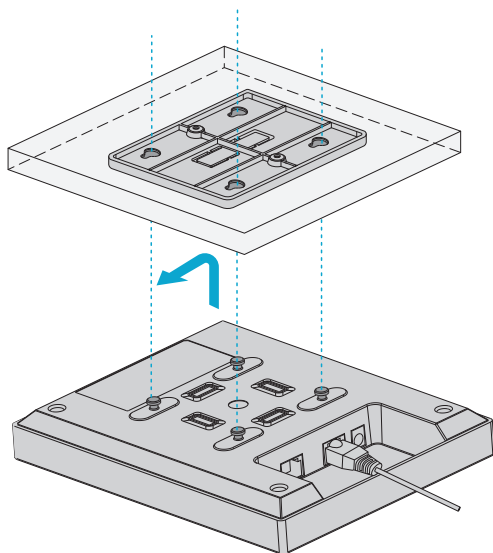


3. Insert a screw anchor into each hole, and tap the screw anchor with a rubber hammer.





4. Secure the mounting bracket to the ceiling by inserting the screws into the anchors.



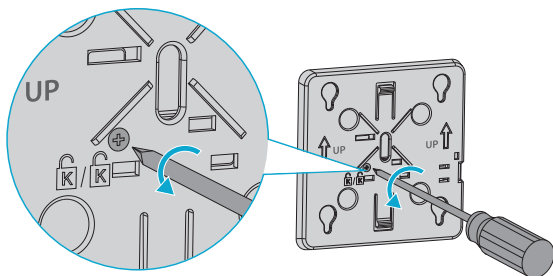
5. Align the tabs on the AP bracket into the notches on the ceiling bracket, and then slide the AP until it snaps into place.

**NOTE:**

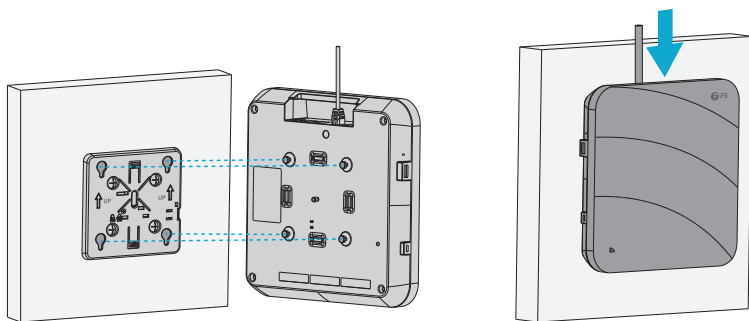
1. Before mounting the AP on the bracket, you must first install the Ethernet cables.
2. The tabs should fit easily into the mounting slots. Do not forcibly push the AP into the slots.
3. After installation, verify that the AP is securely fastened.
4. The wall mount installation is the same as the ceiling mount.

## (Optional) Securing the AP

AP-W6T6817C



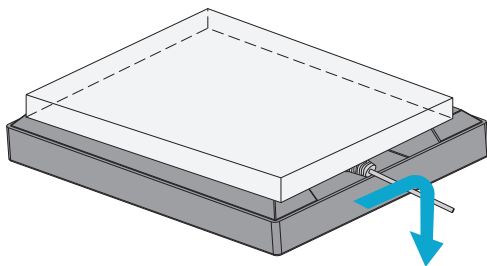
1. Remove the screw on the mounting bracket and engage the hidden lock.



2. Align the tabs on the AP bracket into the notches on the bracket, and then slide the AP until it snaps into place.

## Removing the AP

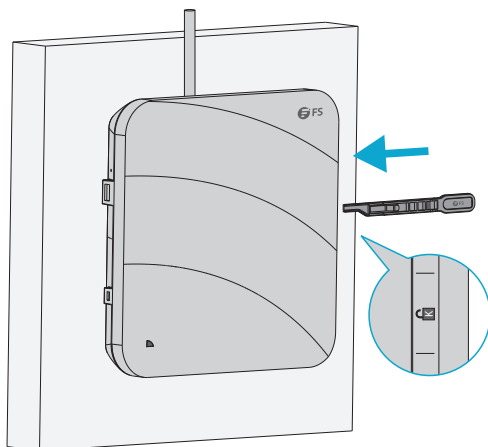
AP-W6D2400C



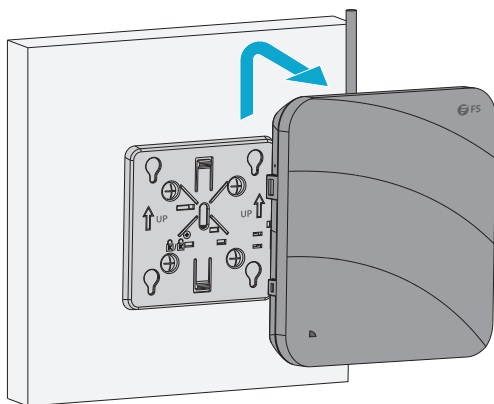
Hold the AP in your hands and push it sideward to release the tab from the notch.

AP-W6T6817C

1. If the hidden lock is enabled, attach the front part of the key to the edge of the mounting bracket.



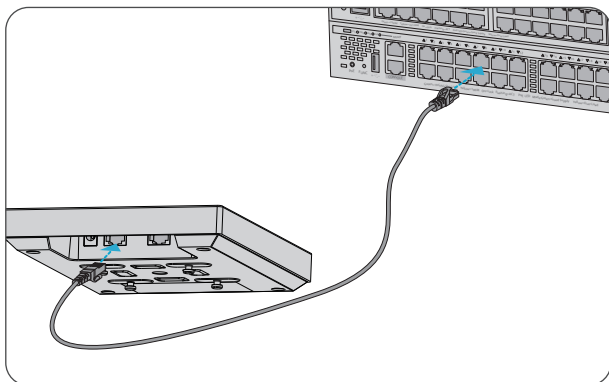
2. Attempt to insert the key into the keyhole along the keyhole mark.



3. Hold the AP in your hands and push it sideward to release the tab from the notch.

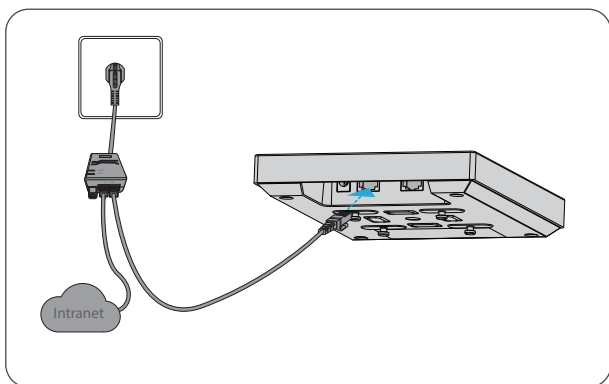
## Connecting the PoE Power Supply

### PoE Switch



Use an Ethernet cable to connect the Ethernet port on the AP to a port on a switch that provides 802.3af PoE power.

### PoE Injector

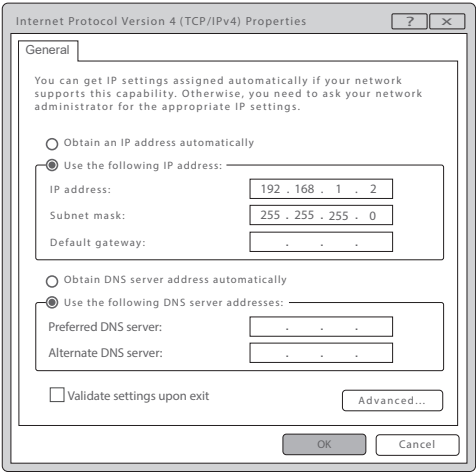


Use the power cord, power injector and Ethernet cable to connect the PoE port of the AP to the local power source.

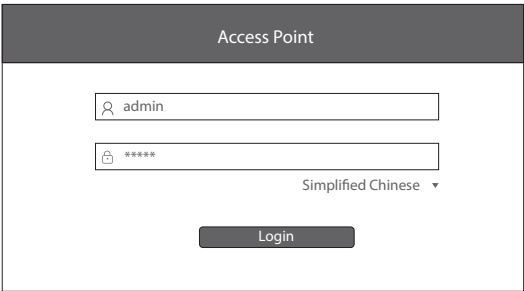
# Configuring the Access Point

## Configuring the AP Using the Web-based Interface

- Step 1: Connect the computer to the business port of the AP using the network cable.
- Step 2: Set the IP address of the computer to 192.168.1.x. ("x" is any number from 2 to 254.)



- Step 3: Open a browser, type <http://192.168.1.1>, and enter the default username and password, **admin/admin**.



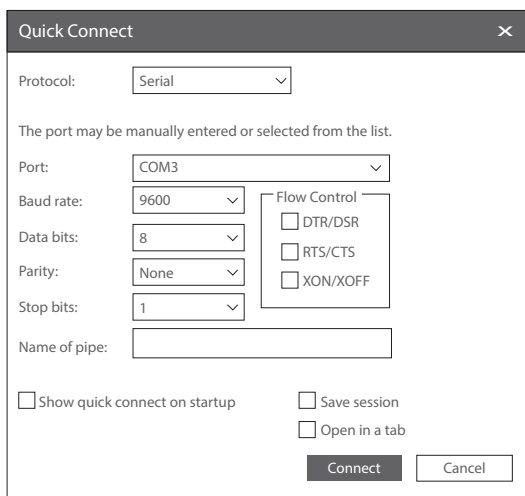
- Step 4: Click **Login** to display the web-based configuration page.

## Configuring the AP Using the Console Port (FAT AP Mode)

Step 1: Connect a computer to the AP's console port using the console cable.

Step 2: Start the terminal simulation software such as HyperTerminal on the computer.

Step 3: Set the parameters of the HyperTerminal: 9600 bits per second, 8 data bits, no parity, 1 stop bit and no flow control.



Quick Connect

Protocol: Serial

The port may be manually entered or selected from the list.

Port: COM3

Baud rate: 9600

Data bits: 8

Parity: None

Stop bits: 1

Name of pipe:

☐ Show quick connect on startup

☐ Save session

☐ Open in a tab

Flow Control

☐ DTR/DSR

☐ RTS/CTS

☐ XON/XOFF

Connect Cancel

Step 4: After setting the parameters, click **Connect** to enter. And then enter the default password, **admin**.

## Troubleshooting

### The screen displays request timed out

1. Check if the network cable is intact.
2. Check if the hardware connection is correct.
3. The system status indicator on the device panel and the NIC indicator on the computer must be lit.
4. The computer's IP address setting is correct.

### LED does not light up after the AP is powered on

1. If you use PoE power supply, verify that the power source is IEEE 802.11af compliant; then verify that the cable is properly connected.
2. If you use a power adapter, verify that the power adapter is connected to an active power outlet; then verify that the power adapter works properly.

## Ethernet port is not working after the Ethernet port is connected

Verify that the device at the other end of the Ethernet cable is working properly. And then verify that the Ethernet cable is capable of providing the required data rate and is properly connected.

## Wireless client cannot find the AP

1. Verify that the power supply works properly.
2. Verify that the Ethernet port is properly connected.
3. Verify that the AP is correctly configured.
4. Move the client device to adjust the distance between the client and the AP.

## Support and Other Resources

- Download <https://www.fs.com/download.html>
- Help Center [https://www.fs.com/service/help\\_center.html](https://www.fs.com/service/help_center.html)
- Contact Us [https://www.fs.com/contact\\_us.html](https://www.fs.com/contact_us.html)

## Product Warranty

FS ensures our customers that any damage or faulty items due to our workmanship, we will offer a free return within 30 Days from the day you receive your goods. This excludes any custom made items or tailored solutions.



Warranty: The Wi-Fi 6 wireless access points enjoy 3 years limited warranty against defect in materials or workmanship. For more details about warranty, please check at <https://www.fs.com/policies/warranty.html>



Return: If you want to return item(s), information on how to return can be found at [https://www.fs.com/policies/day\\_return\\_policy.html](https://www.fs.com/policies/day_return_policy.html)