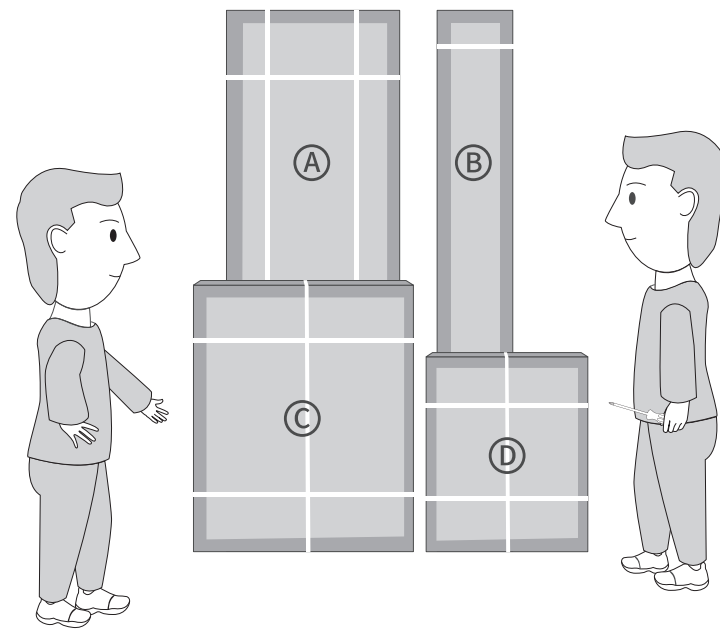
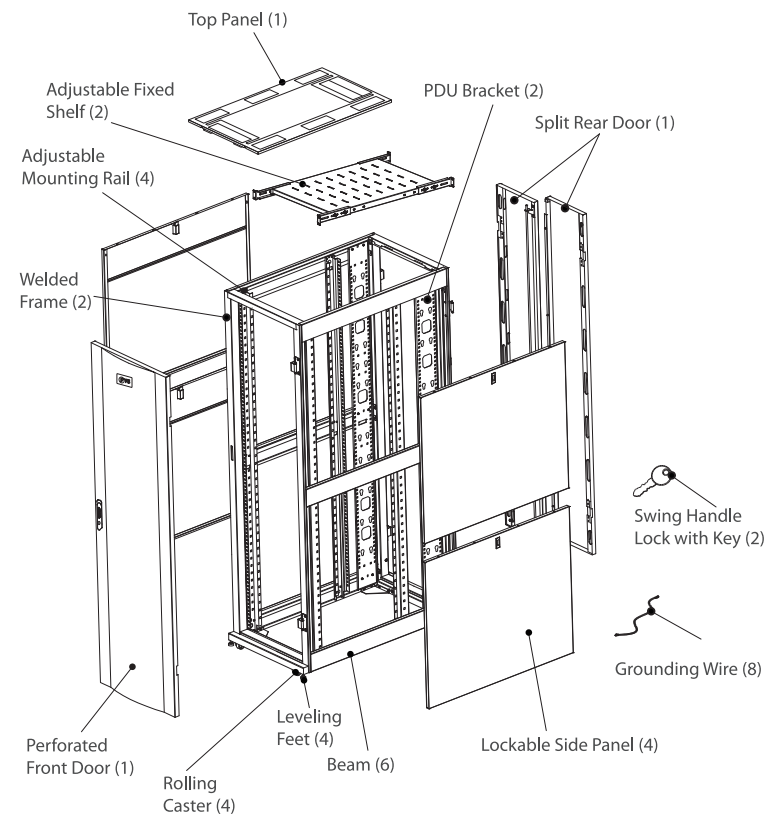
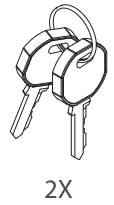
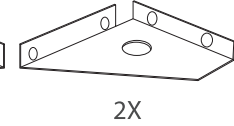
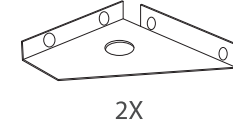


GR600-Series 42U  
**GR600-SERIES SERVER CABINET**  
**ASSEMBLY**  
 Quick Start Guide V1.0



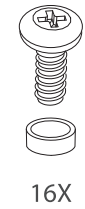
Estimated assembly time:



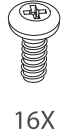
F50001



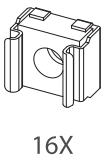
F50002



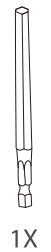
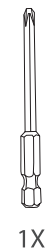
F50003



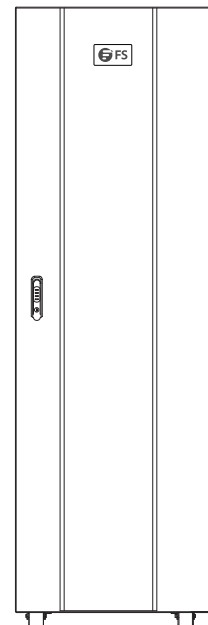
F50004



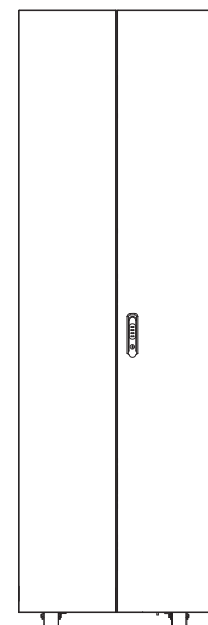
F50005



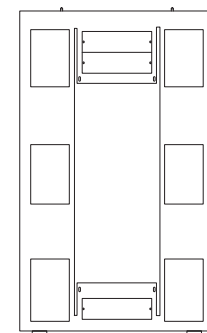
Pack-A



1x Front Door with Welded Frame



1x Rear Door with Welded Frame



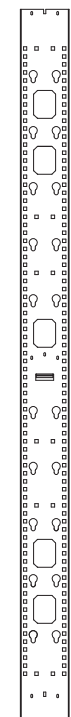
1X



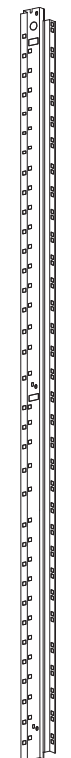
Pack-B



6X

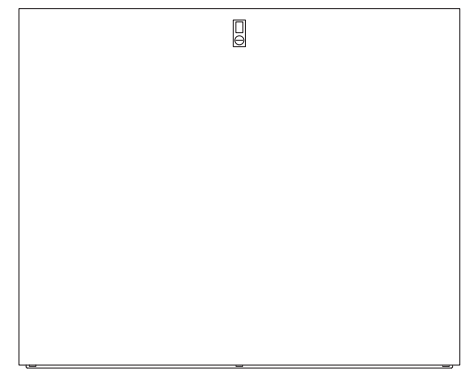
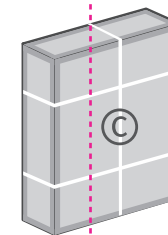


2X



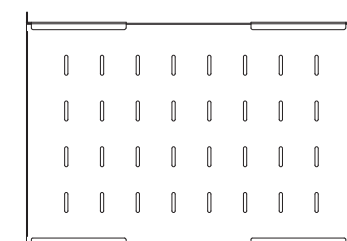
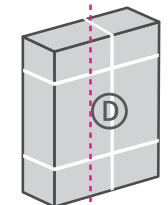
4X

Pack-C



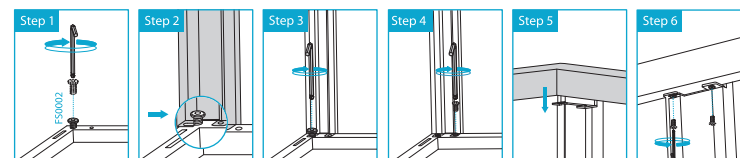
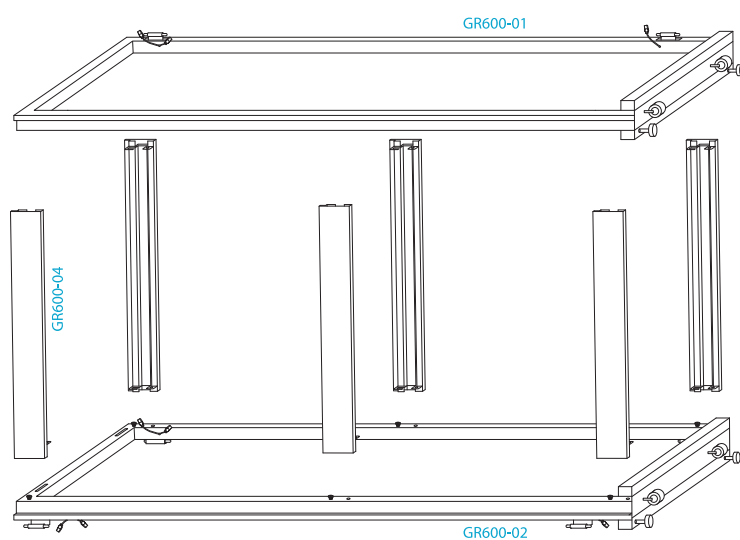
4X

Pack-D



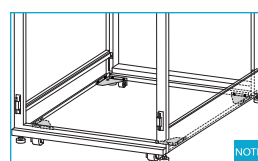
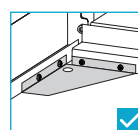
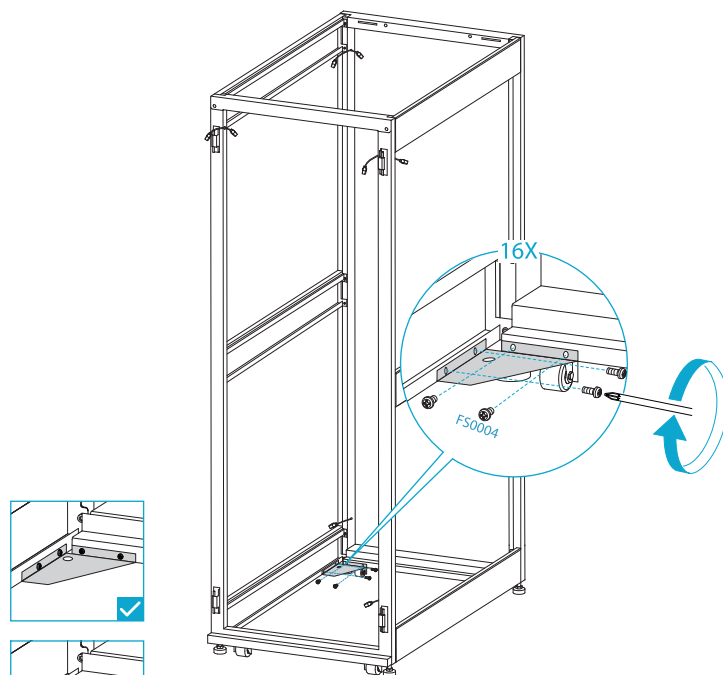
2X

5



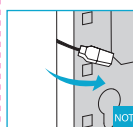
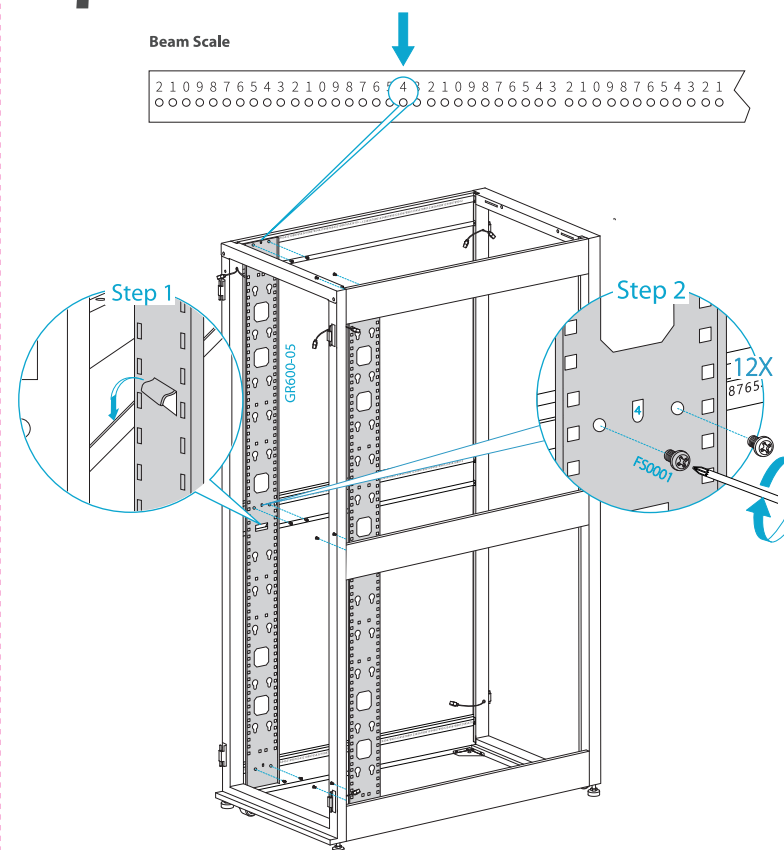
**NOTE:** When installing, the hanging ear opening on the beam is toward the bottom of the welded frame.

6



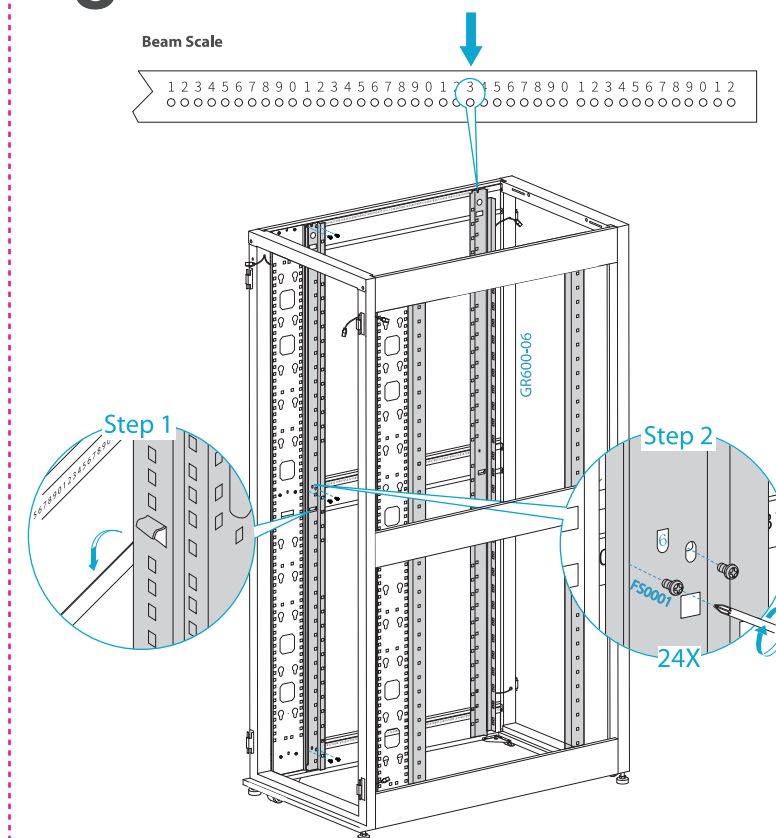
**NOTE:** Stabilization brackets are the same on the diagonal.

7



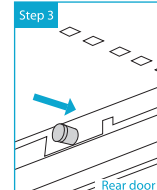
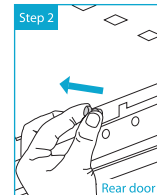
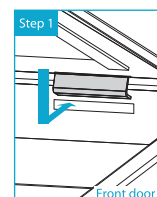
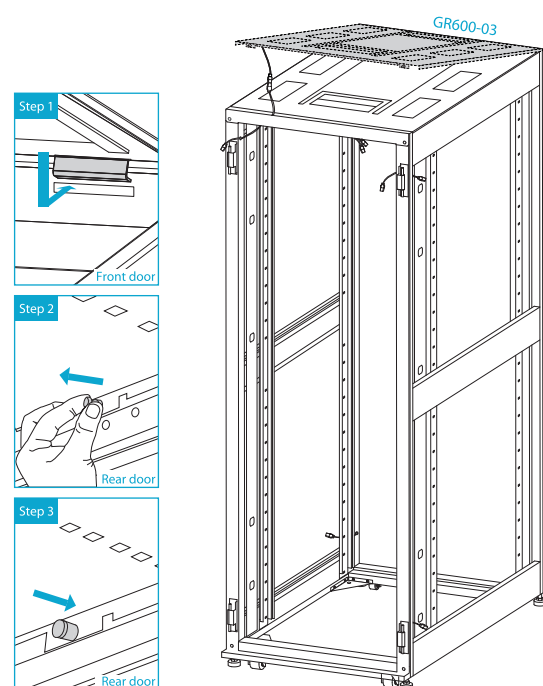
**NOTE:** Place the grounding wires behind the PDU brackets before fastening the screws.

8

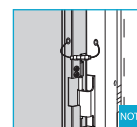
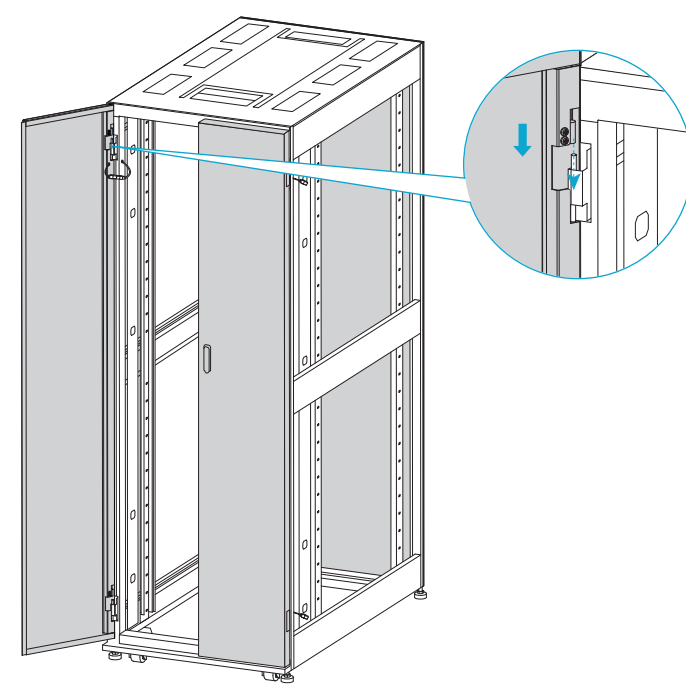


**NOTE:** The number for rear and front rails is at the third #6 and the second #3 respectively.

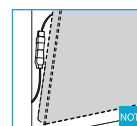
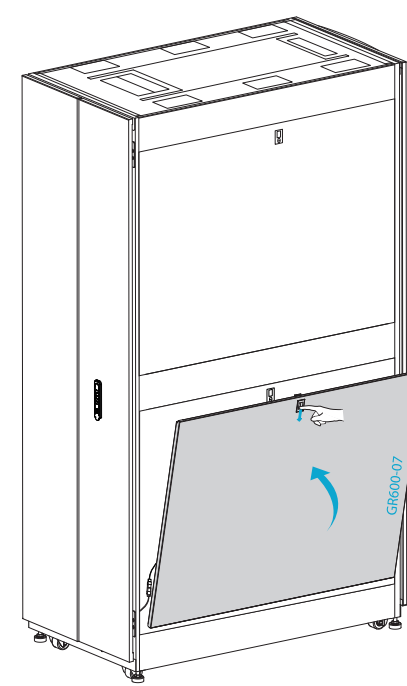
9



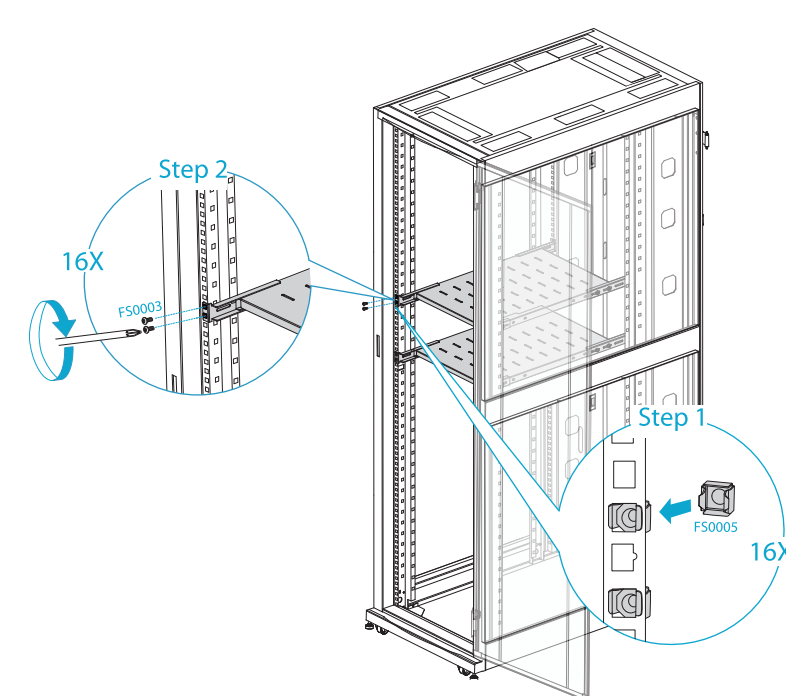
10



11



12



**NOTE:**  
The mounting ears on the shelf could be adjusted to accommodate the distance between the front and rear mounting rails.