



## **IxNetwork Report**

**Test: RFC2544 - Throughput/Latency**

**Test Date: 09/13/2021 16:16:54**

[www.ixiacom.com](http://www.ixiacom.com)  
[www.ixiacom.com/support](http://www.ixiacom.com/support)

## Table of Contents

1.	Cover	1
2.	Info	3
3.	Port Map	4
4.	Aggregate Graphs	5
5.	IterationCharts	13
6.	Aggregated Results	19
7.	Aggregated Results Per Iteration	20
8.	Per Flow Results	25
9.	Iteration Data	27
10.	Theoretical Max Rates	43

**RFC2544 - Throughput/Latency - Info****Test Information****Product Information**

Product Label :	S2800S-8T
Product Version :	Your firmware version here
Serial Number :	Your switch/router serial number here
Comments :	

**Test Settings**

Date Executed :	09/13/2021
Time Executed :	16:16:54
User Name :	
Number of Trials Executed :	1
Stream Duration (sec) :	20

**Output Parameters**

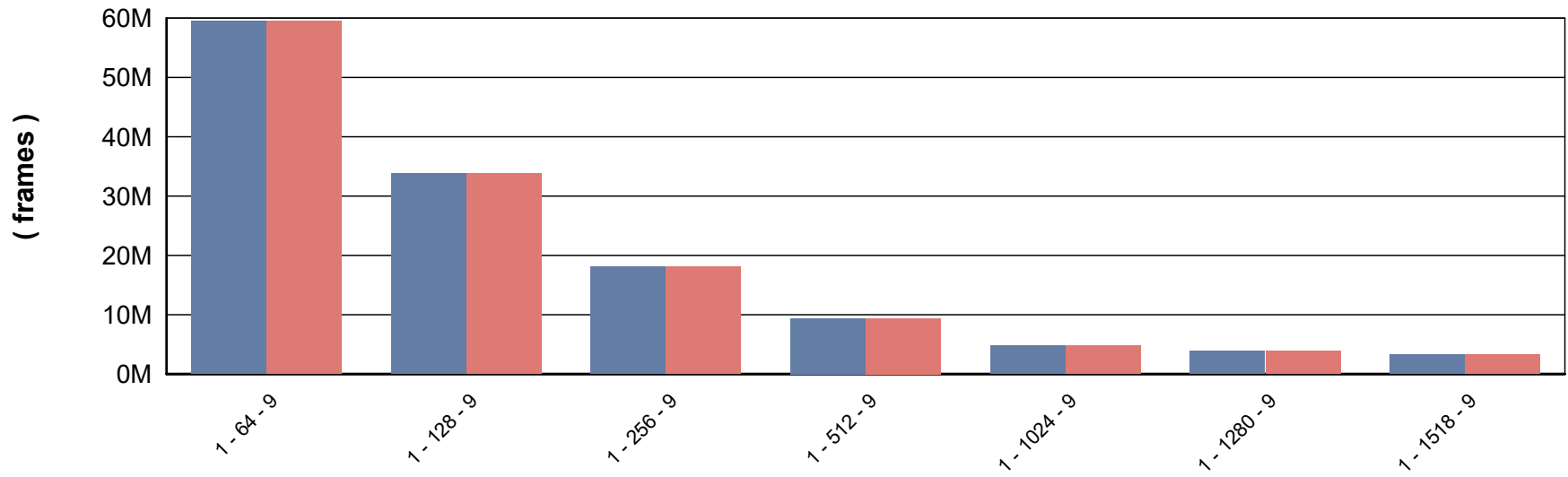
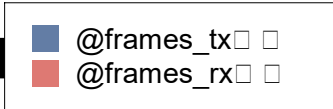
Number of Trials Passed :	N/A
Test Duration :	00:35:59

**RFC2544 - Throughput/Latency - Port Map Information**

Port Map :	Tx Port	Tx Speed (Mbps)	Rx Port	Rx Speed (Mbps)
	10.32.133.101:3:9	1000	10.32.133.101:3:10	1000
	10.32.133.101:3:10	1000	10.32.133.101:3:9	1000

RFC2544 - Throughput/Latency - Aggregated Graph

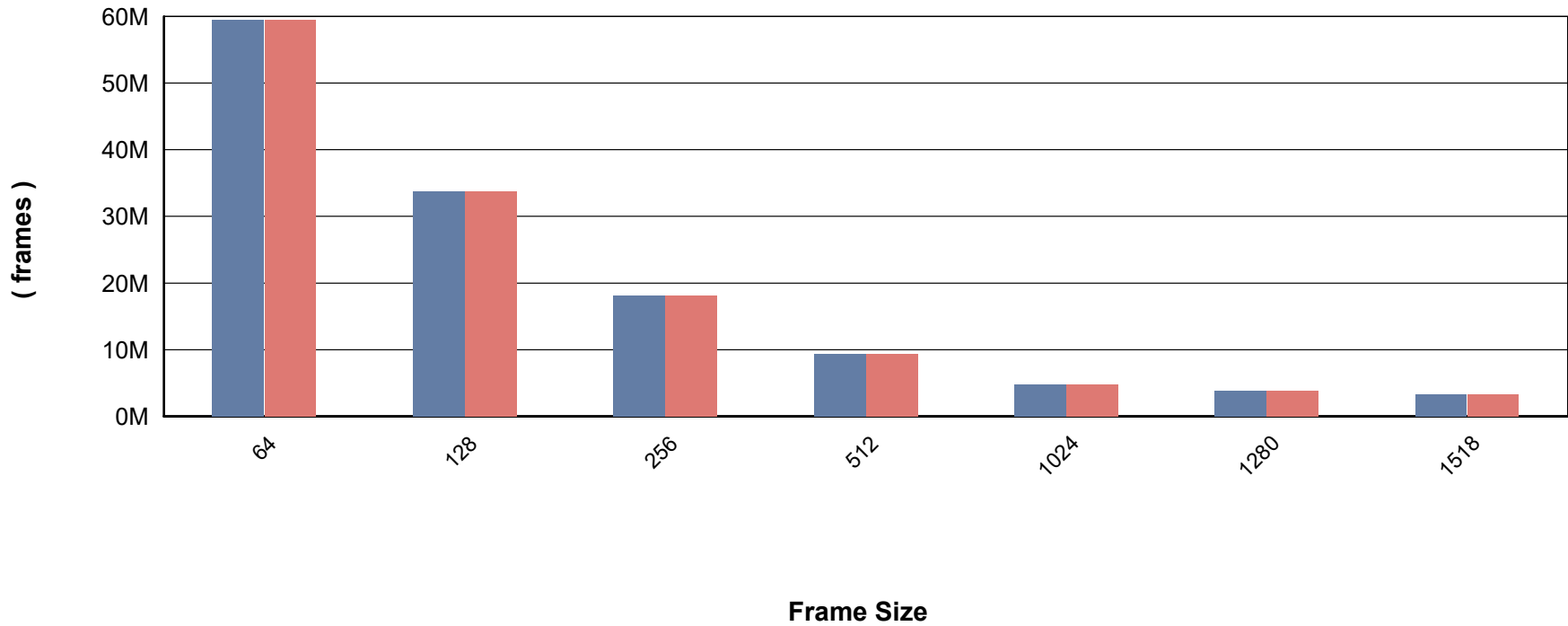
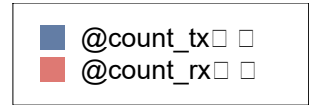
# Total Frames Transmitted and Received



Trial - Framesize - Iteration

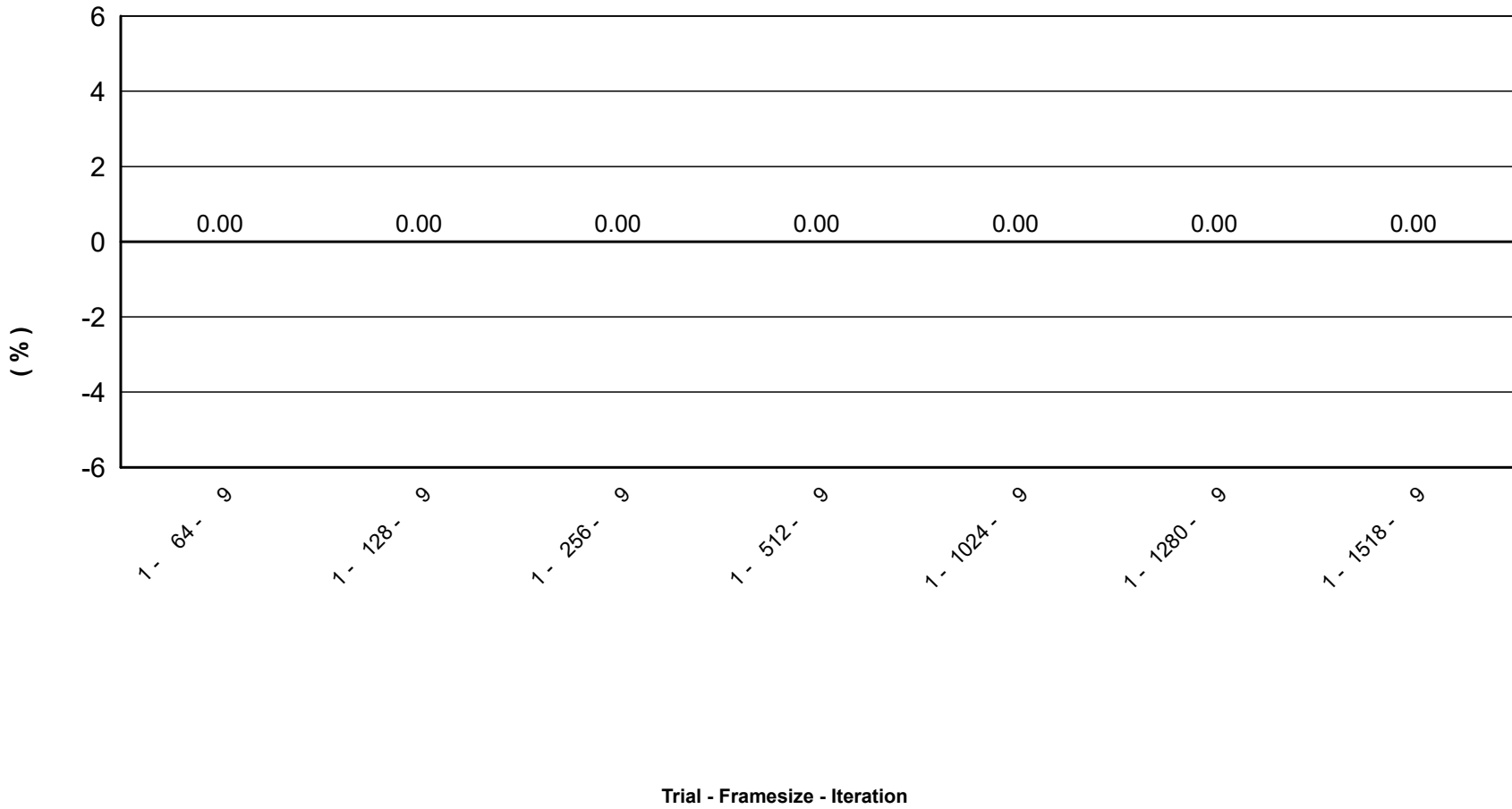
RFC2544 - Throughput/Latency - Aggregated Graph

### Tx / Rx Frames per Frame Size



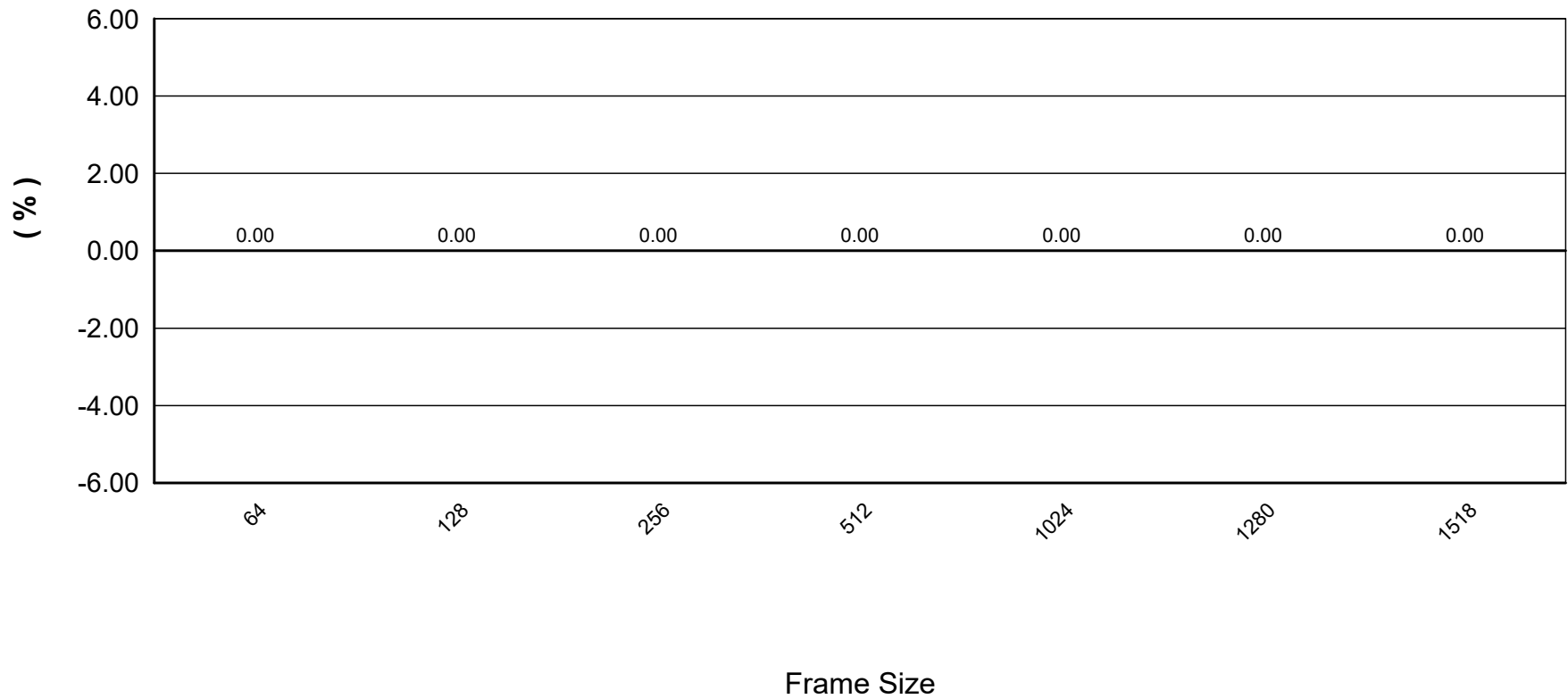
**RFC2544 - Throughput/Latency - Aggregated Graph**

### Aggregated Frame Loss



RFC2544 - Throughput/Latency - Aggregated Graph

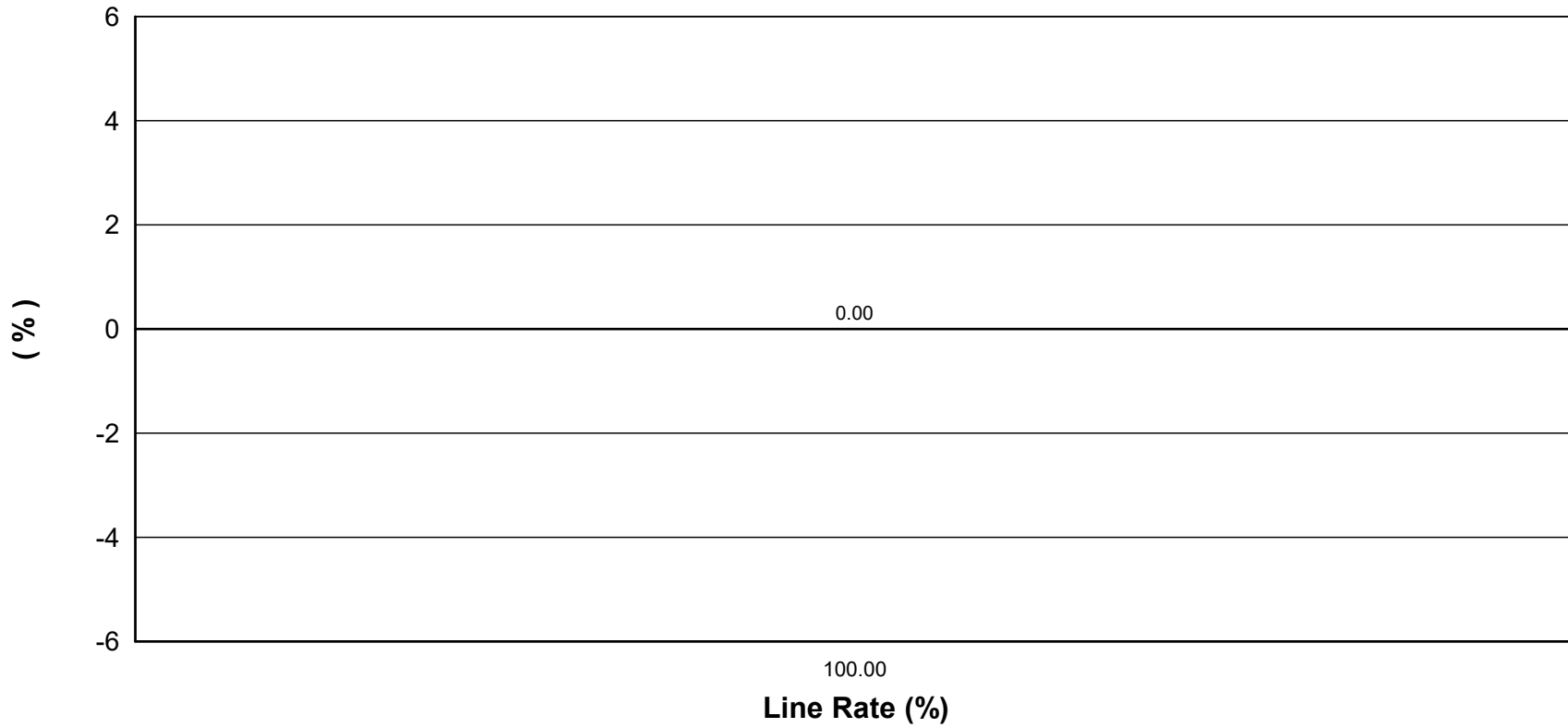
### Aggregated Frame Loss per Frame Size





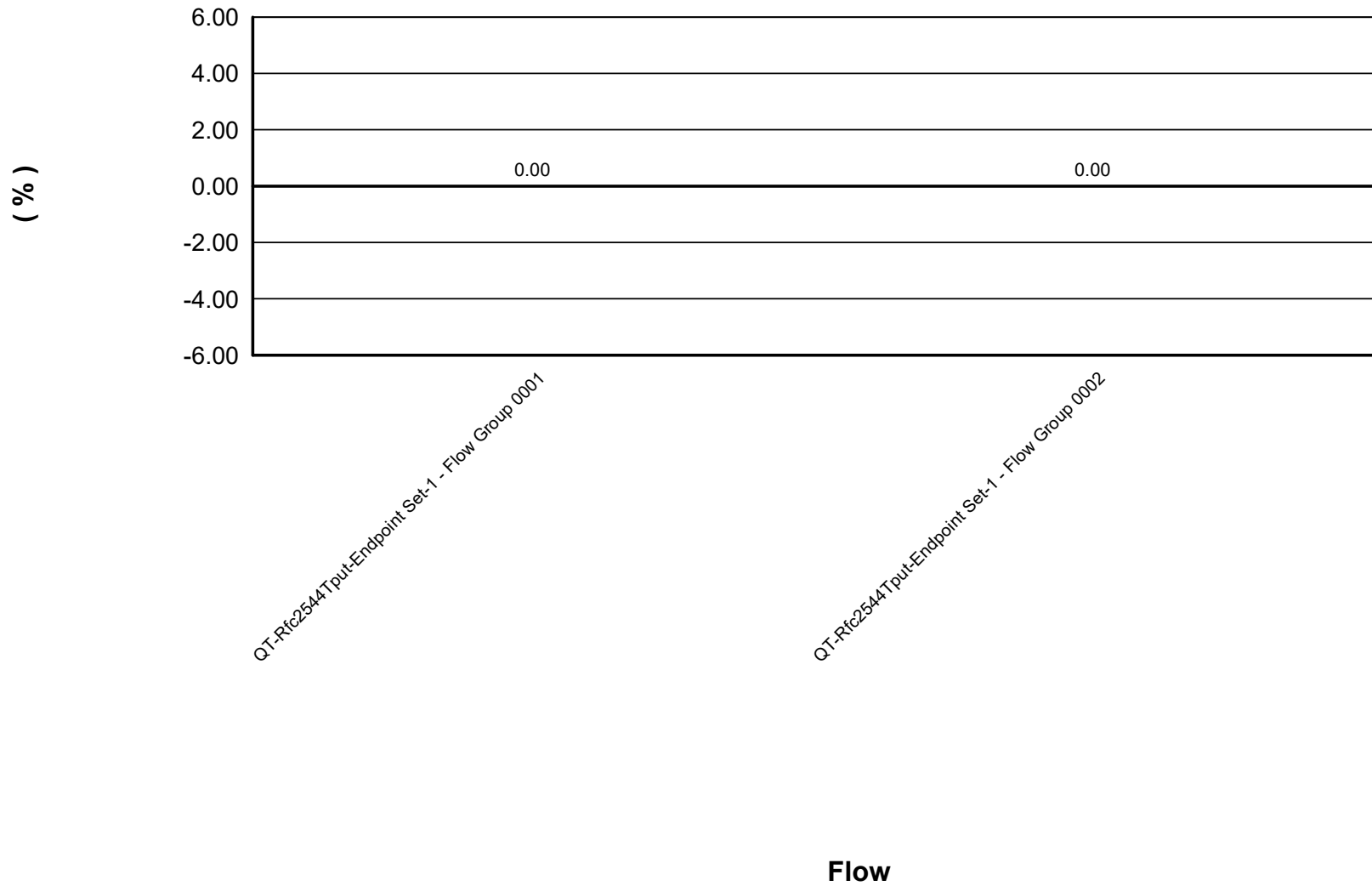
**RFC2544 - Throughput/Latency - Aggregated Graph**

### Aggregated Frame Loss per Line Rate



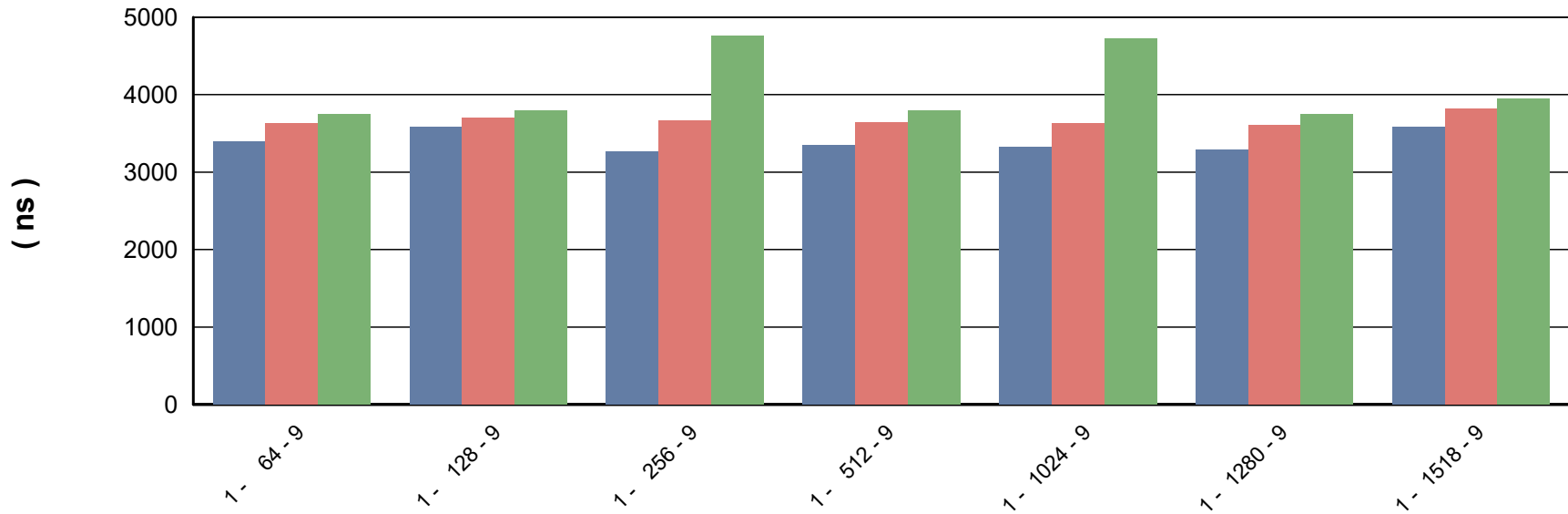
RFC2544 - Throughput/Latency - Per Flow Graph

### Average Frame Loss per Flow



RFC2544 - Throughput/Latency - Aggregated Graph

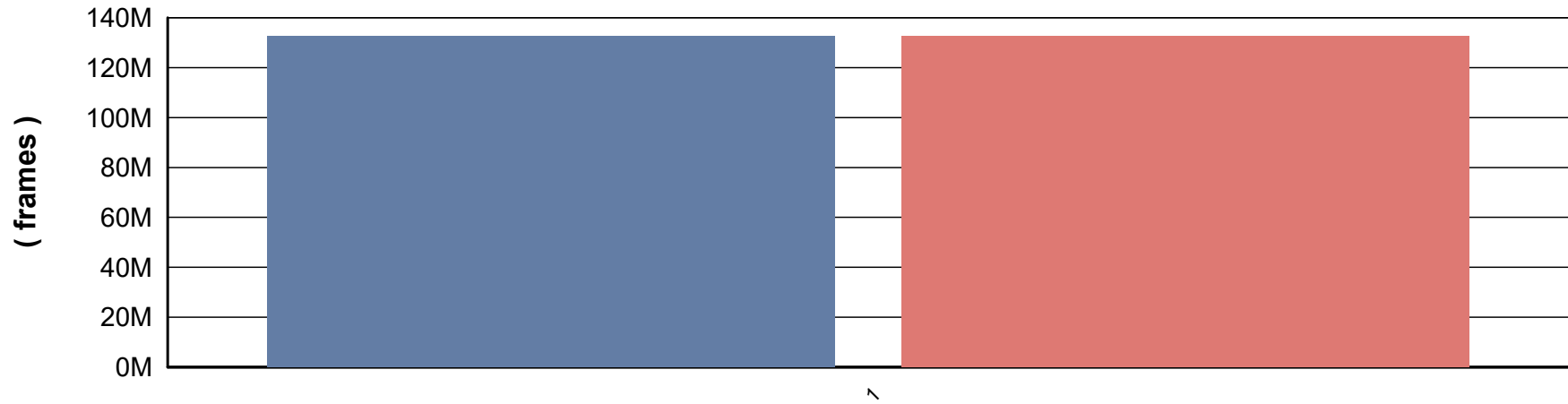
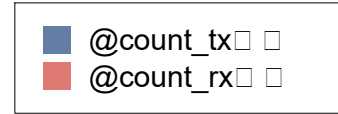
### Aggregated Latency



Trial - Framesize - Iteration

RFC2544 - Throughput/Latency - Per Flow Graph

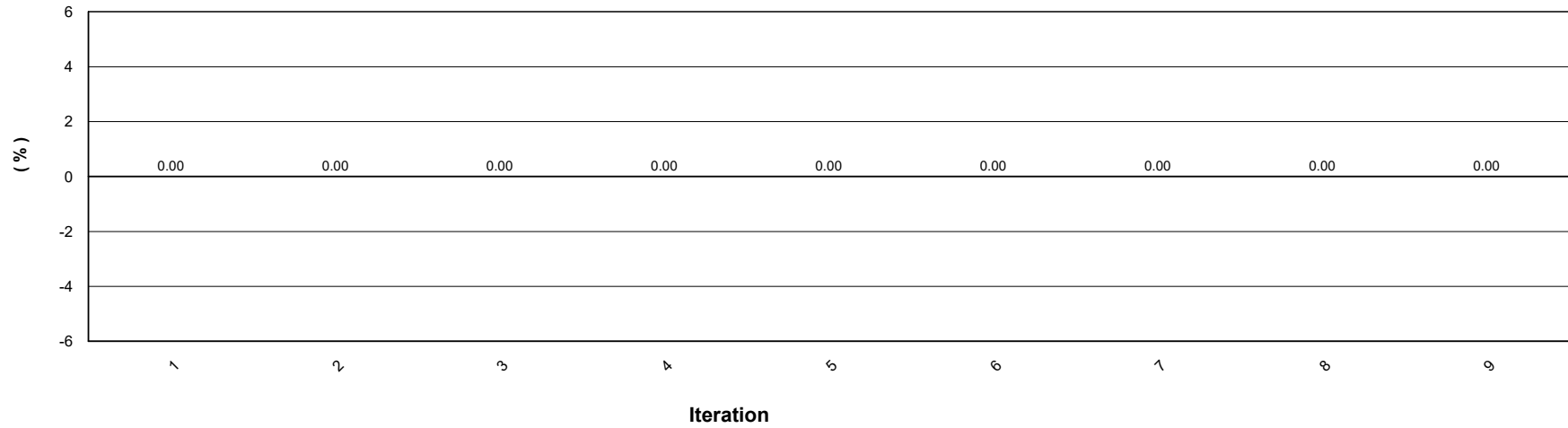
# Tx / Rx Frame Count



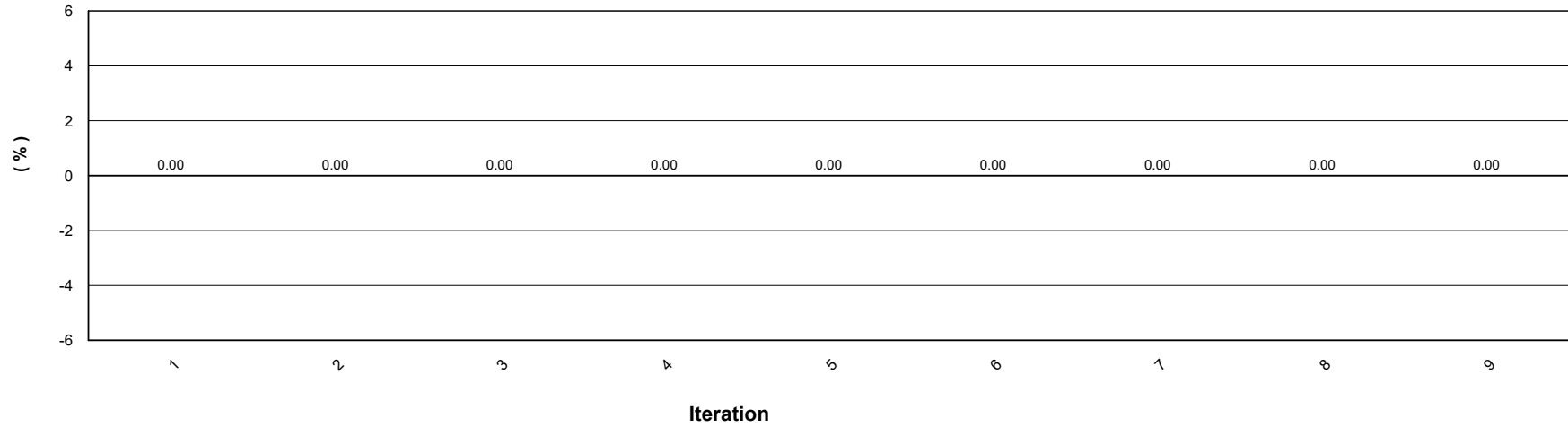
Trial

**RFC2544 - Throughput/Latency - Iteration Graph**

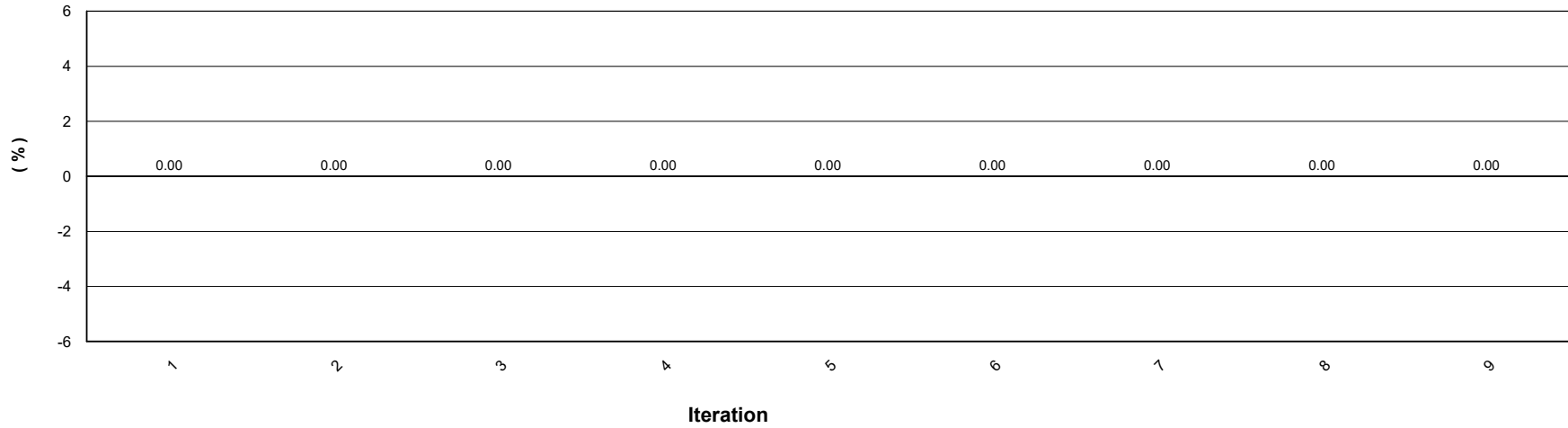
**Aggregated Frame Loss for Trial 1 and Framesize 64**



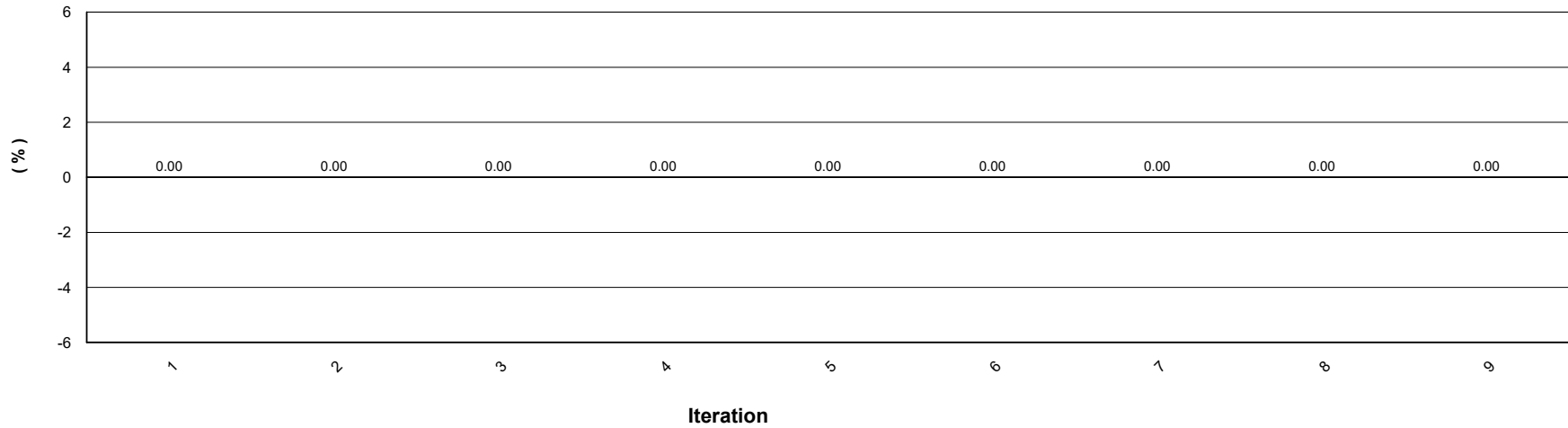
**Aggregated Frame Loss for Trial 1 and Framesize 128**



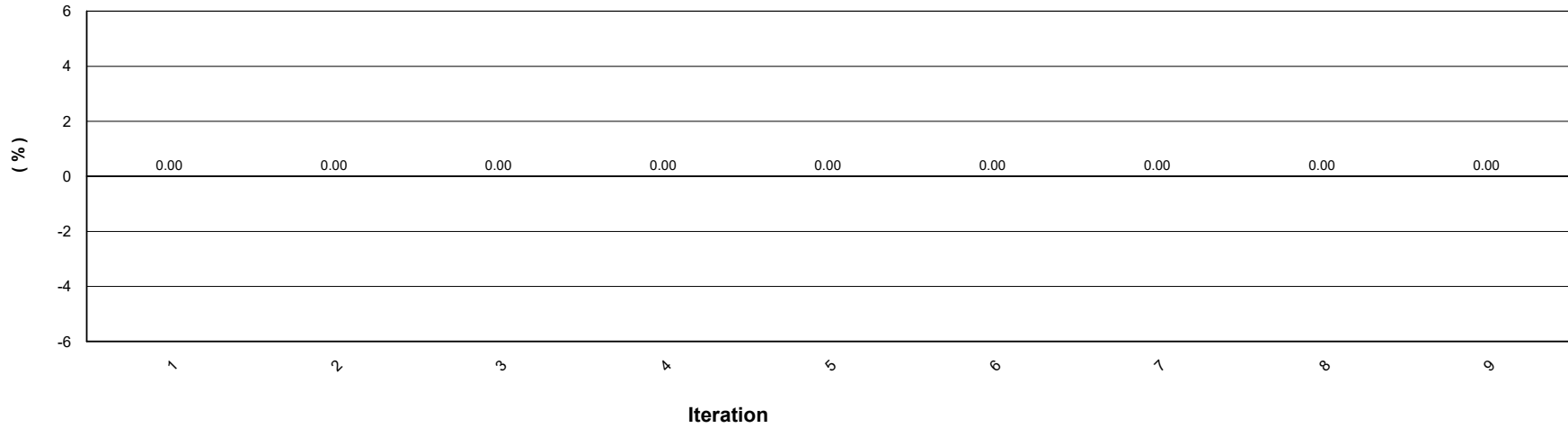
**Aggregated Frame Loss for Trial 1 and Framesize 256**



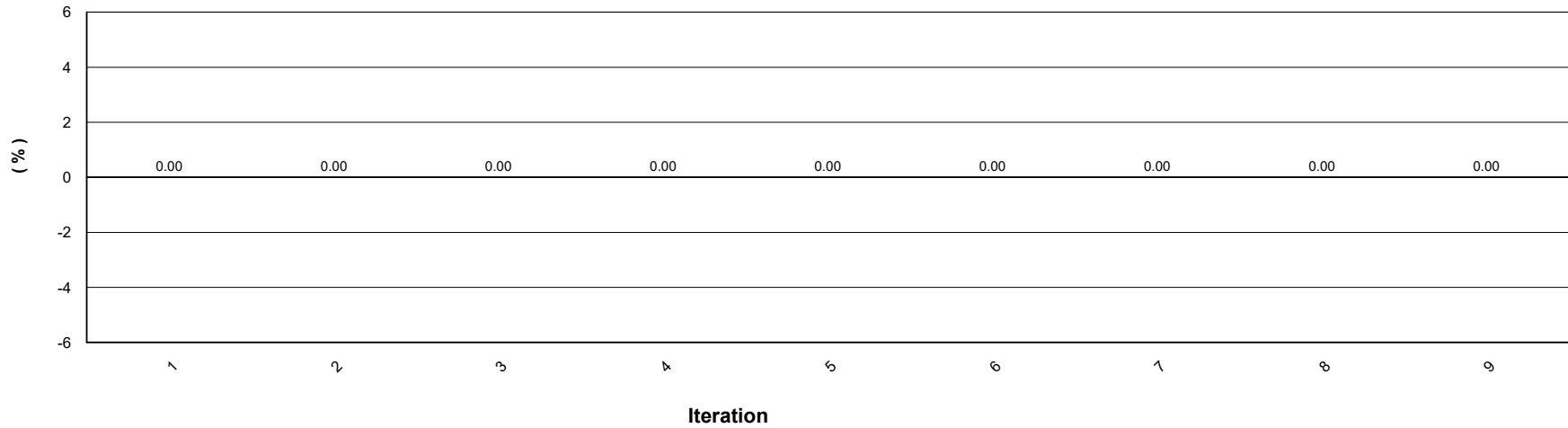
**Aggregated Frame Loss for Trial 1 and Framesize 512**



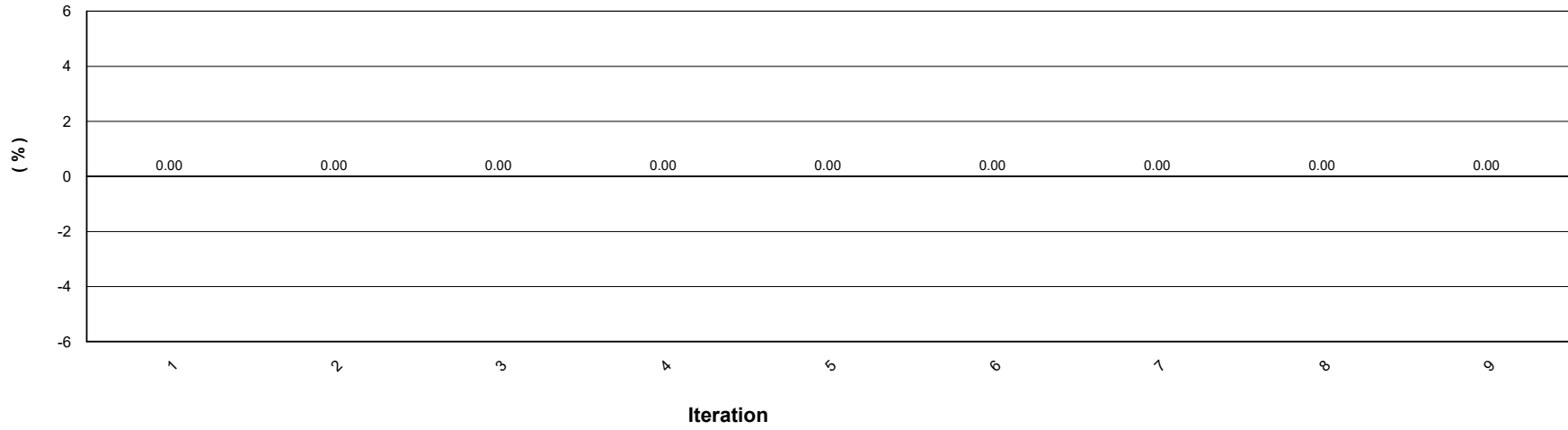
### Aggregated Frame Loss for Trial 1 and Framesize 1024



### Aggregated Frame Loss for Trial 1 and Framesize 1280



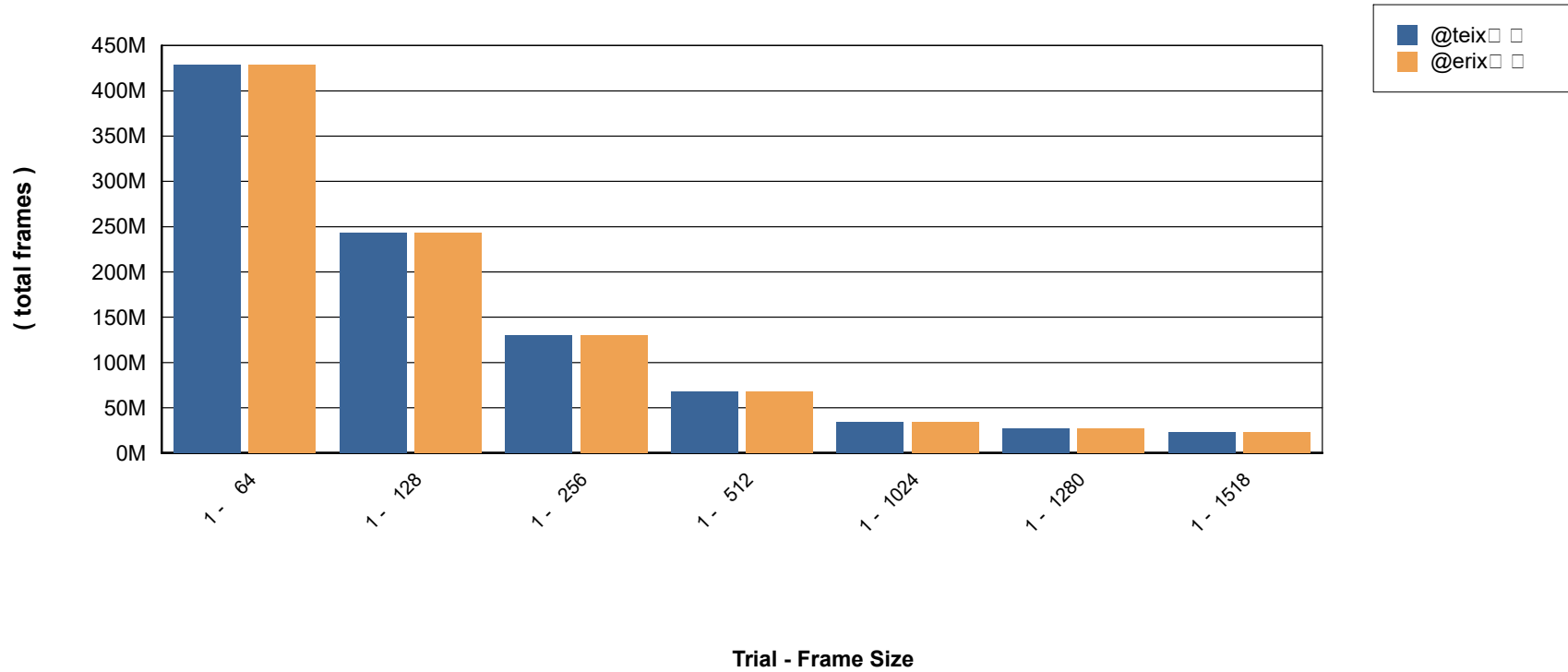
### Aggregated Frame Loss for Trial 1 and Framesize 1518



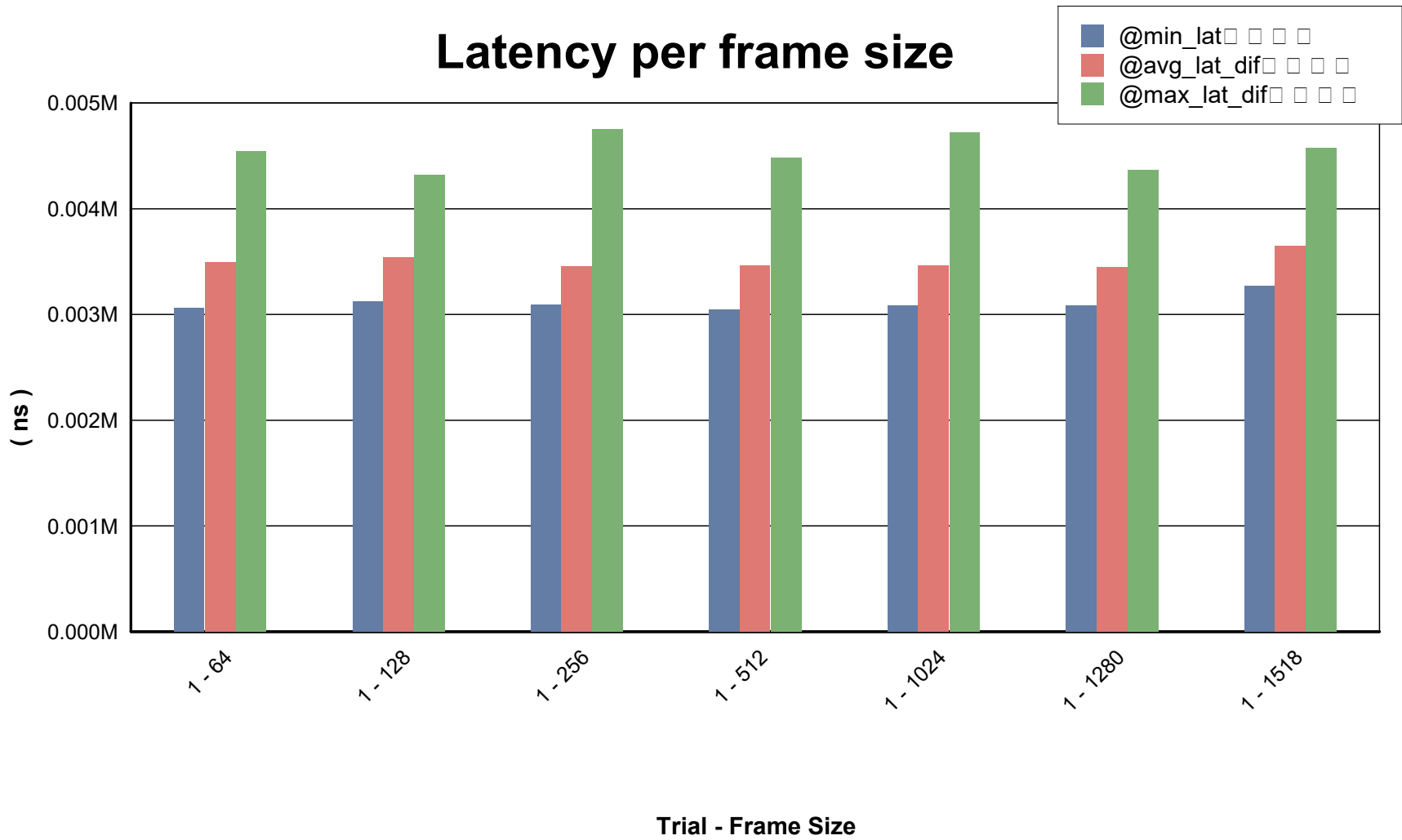


RFC2544 - Throughput/Latency - Iteration Graph

### Tx / Rx Frames per Frame Size



RFC2544 - Throughput/Latency - Iteration Graph



**RFC2544 - Throughput/Latency - Aggregated Results**

Trial / Framesize / Iteration	Agg L2 Throughput				Agg L1 Throughput		Throughput (frames)	Agg Latency		
	Agg Tx Rate %	Agg Rx Rate			Tx Rate Mbps	Rx Rate Mbps		Min (ns)	Max (ns)	Average (ns)
		%	FPS	Mbps						
Trial: 1 / FS: 64 / Iter: 9	100.00	100	2976190.5	1523.810			Tx : 59523810.000 Rx : 59523810.000 Loss : 0 Loss% : 0.00	3400	3745	3628.500
Trial: 1 / FS: 128 / Iter: 9	100.00	100	1689189.2	1729.730			Tx : 33783784.000 Rx : 33783784.000 Loss : 0 Loss% : 0.00	3590	3792	3697.000
Trial: 1 / FS: 256 / Iter: 9	100.00	100	905797.1	1855.072			Tx : 18115942.000 Rx : 18115942.000 Loss : 0 Loss% : 0.00	3272	4755	3665.000
Trial: 1 / FS: 512 / Iter: 9	100.00	100	469924.8	1924.812			Tx : 9398496.000 Rx : 9398496.000 Loss : 0 Loss% : 0.00	3352	3792	3640.000
Trial: 1 / FS: 1024 / Iter: 9	100.00	100	239463.6	1961.686			Tx : 4789272.000 Rx : 4789272.000 Loss : 0 Loss% : 0.00	3327	4720	3634.500
Trial: 1 / FS: 1280 / Iter: 9	100.00	100	192307.7	1969.231			Tx : 3846154.000 Rx : 3846154.000 Loss : 0 Loss% : 0.00	3287	3745	3612.000
Trial: 1 / FS: 1518 / Iter: 9	100.00	100	162548.8	1973.992			Tx : 3250976.000 Rx : 3250976.000 Loss : 0 Loss% : 0.00	3582	3952	3821.000

**RFC2544 - Throughput/Latency - Aggregated Results**

Trial / Framesize / Iteration	Agg L2 Throughput				Agg L1 Throughput		Throughput (frames)	Agg Latency		
	Agg Tx Rate %	Agg Rx Rate			Tx Rate Mbps	Rx Rate Mbps		Min (ns)	Max (ns)	Average (ns)
		%	FPS	Mbps						
Trial: 1 / FS: 64 / Iter: 1	10	10	297619.0	152.381			Tx : 5952380.000 Rx : 5952380.000 Loss : 0 Loss% : 0.00	3080	3727	3417.500
Trial: 1 / FS: 64 / Iter: 2	55	55	1636905.1	838.095			Tx : 32738096.000 Rx : 32738096.000 Loss : 0 Loss% : 0.00	3062	3730	3417.500
Trial: 1 / FS: 64 / Iter: 3	78	78	2306549.4	1180.953			Tx : 46130952.000 Rx : 46130952.000 Loss : 0 Loss% : 0.00	3062	3730	3417.500
Trial: 1 / FS: 64 / Iter: 4	89	89	2641370.1	1352.381			Tx : 52827380.000 Rx : 52827380.000 Loss : 0 Loss% : 0.00	3127	3730	3440.500
Trial: 1 / FS: 64 / Iter: 5	94	94	2808782.3	1438.097			Tx : 56175596.000 Rx : 56175596.000 Loss : 0 Loss% : 0.00	3240	3730	3486.500
Trial: 1 / FS: 64 / Iter: 6	97	97	2892485.4	1480.953			Tx : 57849702.000 Rx : 57849702.000 Loss : 0 Loss% : 0.00	3287	4545	3524.000
Trial: 1 / FS: 64 / Iter: 7	99	99	2934339.6	1502.382			Tx : 58686756.000 Rx : 58686756.000 Loss : 0 Loss% : 0.00	3335	3730	3549.000
Trial: 1 / FS: 64 / Iter: 8	99	99	2955266.9	1513.097			Tx : 59105282.000 Rx : 59105282.000 Loss : 0 Loss% : 0.00	3097	3730	3577.500
Trial: 1 / FS: 64 / Iter: 9	100	100	2976190.5	1523.810			Tx : 59523810.000 Rx : 59523810.000 Loss : 0 Loss% : 0.00	3400	3745	3628.500
Trial: 1 / FS: 128 / Iter: 1	10	10	168918.9	172.973			Tx : 3378378.000 Rx : 3378378.000 Loss : 0 Loss% : 0.00	3142	3792	3471.000
Trial: 1 / FS: 128 / Iter: 2	55	55	929054.4	951.352			Tx : 18581082.000 Rx : 18581082.000 Loss : 0 Loss% : 0.00	3127	3792	3468.000
Trial: 1 / FS: 128 / Iter: 3	78	78	1309122.1	1340.541			Tx : 26182432.000 Rx : 26182432.000 Loss : 0 Loss% : 0.00	3142	3792	3469.500
Trial: 1 / FS: 128 / Iter: 4	89	89	1499155.5	1535.135			Tx : 29983108.000 Rx : 29983108.000 Loss : 0 Loss% : 0.00	3190	4320	3498.500

Trial: 1 / FS: 128 / Iter: 5	94	94	1594172.3	1632.432	Tx : 31883446.000	3270	3807	3532.000
					Rx : 31883446.000			
					Loss : 0			
					Loss% : 0.00			
Trial: 1 / FS: 128 / Iter: 6	97	97	1641681.2	1681.082	Tx : 32833614.000	3317	3807	3562.500
					Rx : 32833614.000			
					Loss : 0			
					Loss% : 0.00			
Trial: 1 / FS: 128 / Iter: 7	99	99	1665434.9	1705.405	Tx : 33308700.000	3222	3792	3585.000
					Rx : 33308700.000			
					Loss : 0			
					Loss% : 0.00			
Trial: 1 / FS: 128 / Iter: 8	99	99	1677312.6	1717.568	Tx : 33546242.000	3382	3792	3602.500
					Rx : 33546242.000			
					Loss : 0			
					Loss% : 0.00			
Trial: 1 / FS: 128 / Iter: 9	100	100	1689189.2	1729.730	Tx : 33783784.000	3590	3792	3697.000
					Rx : 33783784.000			
					Loss : 0			
					Loss% : 0.00			
Trial: 1 / FS: 256 / Iter: 1	10	10	90579.7	185.507	Tx : 1811594.000	3112	3760	3416.000
					Rx : 1811594.000			
					Loss : 0			
					Loss% : 0.00			
Trial: 1 / FS: 256 / Iter: 2	55	55	498188.4	1020.290	Tx : 9963768.000	3097	3762	3420.000
					Rx : 9963768.000			
					Loss : 0			
					Loss% : 0.00			
Trial: 1 / FS: 256 / Iter: 3	78	78	701992.8	1437.681	Tx : 14039856.000	3095	3762	3420.000
					Rx : 14039856.000			
					Loss : 0			
					Loss% : 0.00			
Trial: 1 / FS: 256 / Iter: 4	89	89	803895.1	1646.377	Tx : 16077898.000	3095	3775	3423.500
					Rx : 16077898.000			
					Loss : 0			
					Loss% : 0.00			
Trial: 1 / FS: 256 / Iter: 5	94	94	854846.1	1750.725	Tx : 17096920.000	3095	3762	3428.500
					Rx : 17096920.000			
					Loss : 0			
					Loss% : 0.00			
Trial: 1 / FS: 256 / Iter: 6	97	97	880321.6	1802.899	Tx : 17606432.000	3095	3762	3431.000
					Rx : 17606432.000			
					Loss : 0			
					Loss% : 0.00			
Trial: 1 / FS: 256 / Iter: 7	99	99	893059.6	1828.986	Tx : 17861186.000	3145	3762	3450.500
					Rx : 17861186.000			
					Loss : 0			
					Loss% : 0.00			
Trial: 1 / FS: 256 / Iter: 8	99	99	899428.4	1842.029	Tx : 17988564.000	3162	3762	3474.000
					Rx : 17988564.000			
					Loss : 0			
					Loss% : 0.00			
Trial: 1 / FS: 256 / Iter: 9	100	100	905797.1	1855.072	Tx : 18115942.000	3272	4755	3665.000
					Rx : 18115942.000			
					Loss : 0			
					Loss% : 0.00			
Trial: 1 / FS: 512 / Iter: 1	10	10	46992.5	192.481	Tx : 939850.000	3062	3775	3420.500
					Rx : 939850.000			
					Loss : 0			
					Loss% : 0.00			

Trial: 1 / FS: 512 / Iter: 2	55	55	258458.7	1058.647	Tx : 5169172.000	3045	3775	3417.000
					Rx : 5169172.000			
					Loss : 0			
					Loss% : 0.00			
Trial: 1 / FS: 512 / Iter: 3	78	78	364191.8	1491.729	Tx : 7283834.000	3045	3775	3417.500
					Rx : 7283834.000			
					Loss : 0			
					Loss% : 0.00			
Trial: 1 / FS: 512 / Iter: 4	89	89	417058.3	1708.271	Tx : 8341166.000	3045	3775	3417.000
					Rx : 8341166.000			
					Loss : 0			
					Loss% : 0.00			
Trial: 1 / FS: 512 / Iter: 5	94	94	443491.6	1816.541	Tx : 8869830.000	3047	3775	3418.000
					Rx : 8869830.000			
					Loss : 0			
					Loss% : 0.00			
Trial: 1 / FS: 512 / Iter: 6	97	97	456708.3	1870.677	Tx : 9134164.000	3175	3775	3453.000
					Rx : 9134164.000			
					Loss : 0			
					Loss% : 0.00			
Trial: 1 / FS: 512 / Iter: 7	99	99	463316.5	1897.745	Tx : 9266330.000	3222	4480	3484.000
					Rx : 9266330.000			
					Loss : 0			
					Loss% : 0.00			
Trial: 1 / FS: 512 / Iter: 8	99	99	466620.7	1911.278	Tx : 9332414.000	3222	3775	3513.000
					Rx : 9332414.000			
					Loss : 0			
					Loss% : 0.00			
Trial: 1 / FS: 512 / Iter: 9	100	100	469924.8	1924.812	Tx : 9398496.000	3352	3792	3640.000
					Rx : 9398496.000			
					Loss : 0			
					Loss% : 0.00			
Trial: 1 / FS: 1024 / Iter: 1	10	10	23946.4	196.169	Tx : 478928.000	3080	3745	3430.000
					Rx : 478928.000			
					Loss : 0			
					Loss% : 0.00			
Trial: 1 / FS: 1024 / Iter: 2	55	55	131705.0	1078.927	Tx : 2634100.000	3080	3745	3427.000
					Rx : 2634100.000			
					Loss : 0			
					Loss% : 0.00			
Trial: 1 / FS: 1024 / Iter: 3	78	78	185584.3	1520.307	Tx : 3711686.000	3080	3745	3427.000
					Rx : 3711686.000			
					Loss : 0			
					Loss% : 0.00			
Trial: 1 / FS: 1024 / Iter: 4	89	89	212524.0	1740.996	Tx : 4250478.000	3080	3745	3427.000
					Rx : 4250478.000			
					Loss : 0			
					Loss% : 0.00			
Trial: 1 / FS: 1024 / Iter: 5	94	94	225993.8	1851.341	Tx : 4519876.000	3080	3745	3427.000
					Rx : 4519876.000			
					Loss : 0			
					Loss% : 0.00			
Trial: 1 / FS: 1024 / Iter: 6	97	97	232728.7	1906.513	Tx : 4654574.000	3080	3745	3428.000
					Rx : 4654574.000			
					Loss : 0			
					Loss% : 0.00			
Trial: 1 / FS: 1024 / Iter: 7	99	99	236096.1	1934.100	Tx : 4721922.000	3177	3745	3460.500
					Rx : 4721922.000			
					Loss : 0			
					Loss% : 0.00			

Trial: 1 / FS: 1024 / Iter: 8	99	99	237779.9	1947.893	Tx : 4755598.000	3175	3745	3498.500
					Rx : 4755598.000			
					Loss : 0			
					Loss% : 0.00			
Trial: 1 / FS: 1024 / Iter: 9	100	100	239463.6	1961.686	Tx : 4789272.000	3327	4720	3634.500
					Rx : 4789272.000			
					Loss : 0			
					Loss% : 0.00			
Trial: 1 / FS: 1280 / Iter: 1	10	10	19230.8	196.923	Tx : 384616.000	3097	3742	3418.000
					Rx : 384616.000			
					Loss : 0			
					Loss% : 0.00			
Trial: 1 / FS: 1280 / Iter: 2	55	55	105769.2	1083.077	Tx : 2115384.000	3080	3745	3418.500
					Rx : 2115384.000			
					Loss : 0			
					Loss% : 0.00			
Trial: 1 / FS: 1280 / Iter: 3	78	78	149038.5	1526.154	Tx : 2980770.000	3080	3745	3418.500
					Rx : 2980770.000			
					Loss : 0			
					Loss% : 0.00			
Trial: 1 / FS: 1280 / Iter: 4	89	89	170673.1	1747.692	Tx : 3413462.000	3080	3745	3418.500
					Rx : 3413462.000			
					Loss : 0			
					Loss% : 0.00			
Trial: 1 / FS: 1280 / Iter: 5	94	94	181490.4	1858.462	Tx : 3629808.000	3080	3745	3418.500
					Rx : 3629808.000			
					Loss : 0			
					Loss% : 0.00			
Trial: 1 / FS: 1280 / Iter: 6	97	97	186899.0	1913.846	Tx : 3737980.000	3080	3745	3421.500
					Rx : 3737980.000			
					Loss : 0			
					Loss% : 0.00			
Trial: 1 / FS: 1280 / Iter: 7	99	99	189603.4	1941.538	Tx : 3792068.000	3127	4367	3443.500
					Rx : 3792068.000			
					Loss : 0			
					Loss% : 0.00			
Trial: 1 / FS: 1280 / Iter: 8	99	99	190955.5	1955.385	Tx : 3819110.000	3177	3745	3470.500
					Rx : 3819110.000			
					Loss : 0			
					Loss% : 0.00			
Trial: 1 / FS: 1280 / Iter: 9	100	100	192307.7	1969.231	Tx : 3846154.000	3287	3745	3612.000
					Rx : 3846154.000			
					Loss : 0			
					Loss% : 0.00			
Trial: 1 / FS: 1518 / Iter: 1	10	10	16254.9	197.399	Tx : 325098.000	3270	3937	3609.500
					Rx : 325098.000			
					Loss : 0			
					Loss% : 0.00			
Trial: 1 / FS: 1518 / Iter: 2	55	55	89401.8	1085.696	Tx : 1788036.000	3272	3952	3613.000
					Rx : 1788036.000			
					Loss : 0			
					Loss% : 0.00			
Trial: 1 / FS: 1518 / Iter: 3	78	78	125975.3	1529.844	Tx : 2519506.000	3270	3952	3613.000
					Rx : 2519506.000			
					Loss : 0			
					Loss% : 0.00			
Trial: 1 / FS: 1518 / Iter: 4	89	89	144262.0	1751.918	Tx : 2885240.000	3272	3952	3613.000
					Rx : 2885240.000			
					Loss : 0			
					Loss% : 0.00			

Trial: 1 / FS: 1518 / Iter: 5	94	94	153405.4	1862.955	Tx :	3068108.000	3270	3952	3613.000
					Rx :	3068108.000			
					Loss :	0			
					Loss% :	0.00			
Trial: 1 / FS: 1518 / Iter: 6	97	97	157977.1	1918.474	Tx :	3159542.000	3287	3952	3615.000
					Rx :	3159542.000			
					Loss :	0			
					Loss% :	0.00			
Trial: 1 / FS: 1518 / Iter: 7	99	99	160262.9	1946.233	Tx :	3205258.000	3320	3952	3640.000
					Rx :	3205258.000			
					Loss :	0			
					Loss% :	0.00			
Trial: 1 / FS: 1518 / Iter: 8	99	99	161405.8	1960.113	Tx :	3228116.000	3382	4575	3667.000
					Rx :	3228116.000			
					Loss :	0			
					Loss% :	0.00			
Trial: 1 / FS: 1518 / Iter: 9	100	100	162548.8	1973.992	Tx :	3250976.000	3582	3952	3821.000
					Rx :	3250976.000			
					Loss :	0			
					Loss% :	0.00			



**RFC2544 - Throughput/Latency - Per Flow Statistics - Part 1 of 2**

Trial / Framesize / Iteration	Tx Port	Rx Port	Flow Group	L2 Throughput				L1 Throughput		Throughput (frames)			
				Tx Rate %	Rx Rate			Tx Rate Mbps	Rx Rate Mbps				
					%	FPS	Mbps						
Trial: 1 / FS: 64 / Iter: 9	Ethernet - 009	Ethernet - 010	QT-Rfc2544Tput-Endpoint Set-1 - Flow Group 0001	100.00	100	1488095.2	761.91			Tx : 29761905	Rx : 29761905	Loss : 0	Loss% : 0.000
Trial: 1 / FS: 64 / Iter: 9	Ethernet - 010	Ethernet - 009	QT-Rfc2544Tput-Endpoint Set-1 - Flow Group 0002	100.00	100	1488095.2	761.91			Tx : 29761905	Rx : 29761905	Loss : 0	Loss% : 0.000
Trial: 1 / FS: 128 / Iter: 9	Ethernet - 009	Ethernet - 010	QT-Rfc2544Tput-Endpoint Set-1 - Flow Group 0001	100.00	100	844594.6	864.87			Tx : 16891892	Rx : 16891892	Loss : 0	Loss% : 0.000
Trial: 1 / FS: 128 / Iter: 9	Ethernet - 010	Ethernet - 009	QT-Rfc2544Tput-Endpoint Set-1 - Flow Group 0002	100.00	100	844594.6	864.87			Tx : 16891892	Rx : 16891892	Loss : 0	Loss% : 0.000
Trial: 1 / FS: 256 / Iter: 9	Ethernet - 009	Ethernet - 010	QT-Rfc2544Tput-Endpoint Set-1 - Flow Group 0001	100.00	100	452898.5	927.54			Tx : 9057971	Rx : 9057971	Loss : 0	Loss% : 0.000
Trial: 1 / FS: 256 / Iter: 9	Ethernet - 010	Ethernet - 009	QT-Rfc2544Tput-Endpoint Set-1 - Flow Group 0002	100.00	100	452898.6	927.54			Tx : 9057971	Rx : 9057971	Loss : 0	Loss% : 0.000
Trial: 1 / FS: 512 / Iter: 9	Ethernet - 009	Ethernet - 010	QT-Rfc2544Tput-Endpoint Set-1 - Flow Group 0001	100.00	100	234962.4	962.41			Tx : 4699248	Rx : 4699248	Loss : 0	Loss% : 0.000
Trial: 1 / FS: 512 / Iter: 9	Ethernet - 010	Ethernet - 009	QT-Rfc2544Tput-Endpoint Set-1 - Flow Group 0002	100.00	100	234962.4	962.41			Tx : 4699248	Rx : 4699248	Loss : 0	Loss% : 0.000
Trial: 1 / FS: 1024 / Iter: 9	Ethernet - 009	Ethernet - 010	QT-Rfc2544Tput-Endpoint Set-1 - Flow Group 0001	100.00	100	119731.8	980.84			Tx : 2394636	Rx : 2394636	Loss : 0	Loss% : 0.000
Trial: 1 / FS: 1024 / Iter: 9	Ethernet - 010	Ethernet - 009	QT-Rfc2544Tput-Endpoint Set-1 - Flow Group 0002	100.00	100	119731.8	980.84			Tx : 2394636	Rx : 2394636	Loss : 0	Loss% : 0.000
Trial: 1 / FS: 1280 / Iter: 9	Ethernet - 009	Ethernet - 010	QT-Rfc2544Tput-Endpoint Set-1 - Flow Group 0001	100.00	100	96153.8	984.62			Tx : 1923077	Rx : 1923077	Loss : 0	Loss% : 0.000
Trial: 1 / FS: 1280 / Iter: 9	Ethernet - 010	Ethernet - 009	QT-Rfc2544Tput-Endpoint Set-1 - Flow Group 0002	100.00	100	96153.8	984.62			Tx : 1923077	Rx : 1923077	Loss : 0	Loss% : 0.000
Trial: 1 / FS: 1518 / Iter: 9	Ethernet - 009	Ethernet - 010	QT-Rfc2544Tput-Endpoint Set-1 - Flow Group 0001	100.00	100	81274.4	987.00			Tx : 1625488	Rx : 1625488	Loss : 0	Loss% : 0.000

Trial: 1 / FS: 1518 / Iter: 9	Ethernet - 010	Ethernet - 009	QT-Rfc2544Tput-Endpoint Set-1 - Flow Group 0002	100.00	100	81274.4	987.00	Tx : 1625488
								Rx : 1625488
								Loss : 0
								Loss% : 0.000

**RFC2544 - Throughput/Latency - Per Flow Statistics - Part 2 of 2**

Trial / Framesize / Iteration	Tx Port	Rx Port	Flow Group	Min Latency (ns)	Max Latency (ns)	Avg Latency (ns)
Trial: 1 / FS: 64 / Iter: 9	Ethernet - 009	Ethernet - 010	QT-Rfc2544Tput-Endpoint Set-1 - Flow Group 0001	3400	3657	3590
Trial: 1 / FS: 64 / Iter: 9	Ethernet - 010	Ethernet - 009	QT-Rfc2544Tput-Endpoint Set-1 - Flow Group 0002	3455	3745	3667
Trial: 1 / FS: 128 / Iter: 9	Ethernet - 009	Ethernet - 010	QT-Rfc2544Tput-Endpoint Set-1 - Flow Group 0001	3590	3720	3659
Trial: 1 / FS: 128 / Iter: 9	Ethernet - 010	Ethernet - 009	QT-Rfc2544Tput-Endpoint Set-1 - Flow Group 0002	3615	3792	3735
Trial: 1 / FS: 256 / Iter: 9	Ethernet - 009	Ethernet - 010	QT-Rfc2544Tput-Endpoint Set-1 - Flow Group 0001	3272	4682	3625
Trial: 1 / FS: 256 / Iter: 9	Ethernet - 010	Ethernet - 009	QT-Rfc2544Tput-Endpoint Set-1 - Flow Group 0002	3647	4755	3705
Trial: 1 / FS: 512 / Iter: 9	Ethernet - 009	Ethernet - 010	QT-Rfc2544Tput-Endpoint Set-1 - Flow Group 0001	3352	3640	3576
Trial: 1 / FS: 512 / Iter: 9	Ethernet - 010	Ethernet - 009	QT-Rfc2544Tput-Endpoint Set-1 - Flow Group 0002	3357	3792	3704
Trial: 1 / FS: 1024 / Iter: 9	Ethernet - 009	Ethernet - 010	QT-Rfc2544Tput-Endpoint Set-1 - Flow Group 0001	3352	4665	3596
Trial: 1 / FS: 1024 / Iter: 9	Ethernet - 010	Ethernet - 009	QT-Rfc2544Tput-Endpoint Set-1 - Flow Group 0002	3327	4720	3673
Trial: 1 / FS: 1280 / Iter: 9	Ethernet - 009	Ethernet - 010	QT-Rfc2544Tput-Endpoint Set-1 - Flow Group 0001	3287	3672	3573
Trial: 1 / FS: 1280 / Iter: 9	Ethernet - 010	Ethernet - 009	QT-Rfc2544Tput-Endpoint Set-1 - Flow Group 0002	3552	3745	3651
Trial: 1 / FS: 1518 / Iter: 9	Ethernet - 009	Ethernet - 010	QT-Rfc2544Tput-Endpoint Set-1 - Flow Group 0001	3607	3865	3779
Trial: 1 / FS: 1518 / Iter: 9	Ethernet - 010	Ethernet - 009	QT-Rfc2544Tput-Endpoint Set-1 - Flow Group 0002	3582	3952	3863

**RFC2544 - Throughput/Latency - Iteration Statistics - Part 1 of 2**

Trial / Framesize / Iteration	Tx Port	Rx Port	Flow Group	L2 Throughput				L1 Throughput		Throughput (frames)			
				Tx Rate %	Rx Rate			Tx Rate Mbps	Rx Rate Mbps	Tx	Rx		
					%	FPS	Mbps					Loss	Loss%
Trial: 1 / FS: 64 / Iter: 1	Ethernet - 009	Ethernet - 010	QT-Rfc2544Tput-Endpoint Set-1 - Flow Group 0001	10.00	10.00	148809.5	76.19			Tx : 2976190	Rx : 2976190	Loss : 0	Loss% : 0.000
Trial: 1 / FS: 64 / Iter: 1	Ethernet - 010	Ethernet - 009	QT-Rfc2544Tput-Endpoint Set-1 - Flow Group 0002	10.00	10.00	148809.5	76.19			Tx : 2976190	Rx : 2976190	Loss : 0	Loss% : 0.000
Trial: 1 / FS: 64 / Iter: 2	Ethernet - 009	Ethernet - 010	QT-Rfc2544Tput-Endpoint Set-1 - Flow Group 0001	55.00	55.00	818452.5	419.05			Tx : 16369048	Rx : 16369048	Loss : 0	Loss% : 0.000
Trial: 1 / FS: 64 / Iter: 2	Ethernet - 010	Ethernet - 009	QT-Rfc2544Tput-Endpoint Set-1 - Flow Group 0002	55.00	55.00	818452.5	419.05			Tx : 16369048	Rx : 16369048	Loss : 0	Loss% : 0.000
Trial: 1 / FS: 64 / Iter: 3	Ethernet - 009	Ethernet - 010	QT-Rfc2544Tput-Endpoint Set-1 - Flow Group 0001	77.50	77.50	1153274.7	590.48			Tx : 23065476	Rx : 23065476	Loss : 0	Loss% : 0.000
Trial: 1 / FS: 64 / Iter: 3	Ethernet - 010	Ethernet - 009	QT-Rfc2544Tput-Endpoint Set-1 - Flow Group 0002	77.50	77.50	1153274.7	590.48			Tx : 23065476	Rx : 23065476	Loss : 0	Loss% : 0.000
Trial: 1 / FS: 64 / Iter: 4	Ethernet - 009	Ethernet - 010	QT-Rfc2544Tput-Endpoint Set-1 - Flow Group 0001	88.75	88.75	1320685.0	676.19			Tx : 26413690	Rx : 26413690	Loss : 0	Loss% : 0.000
Trial: 1 / FS: 64 / Iter: 4	Ethernet - 010	Ethernet - 009	QT-Rfc2544Tput-Endpoint Set-1 - Flow Group 0002	88.75	88.75	1320685.0	676.19			Tx : 26413690	Rx : 26413690	Loss : 0	Loss% : 0.000
Trial: 1 / FS: 64 / Iter: 5	Ethernet - 009	Ethernet - 010	QT-Rfc2544Tput-Endpoint Set-1 - Flow Group 0001	94.38	94.38	1404391.1	719.05			Tx : 28087798	Rx : 28087798	Loss : 0	Loss% : 0.000
Trial: 1 / FS: 64 / Iter: 5	Ethernet - 010	Ethernet - 009	QT-Rfc2544Tput-Endpoint Set-1 - Flow Group 0002	94.38	94.38	1404391.1	719.05			Tx : 28087798	Rx : 28087798	Loss : 0	Loss% : 0.000
Trial: 1 / FS: 64 / Iter: 6	Ethernet - 009	Ethernet - 010	QT-Rfc2544Tput-Endpoint Set-1 - Flow Group 0001	97.19	97.19	1446242.7	740.48			Tx : 28924851	Rx : 28924851	Loss : 0	Loss% : 0.000
Trial: 1 / FS: 64 / Iter: 6	Ethernet - 010	Ethernet - 009	QT-Rfc2544Tput-Endpoint Set-1 - Flow Group 0002	97.19	97.19	1446242.7	740.48			Tx : 28924851	Rx : 28924851	Loss : 0	Loss% : 0.000
Trial: 1 / FS: 64 / Iter: 7	Ethernet - 009	Ethernet - 010	QT-Rfc2544Tput-Endpoint Set-1 - Flow Group 0001	98.59	98.59	1467169.8	751.19			Tx : 29343378	Rx : 29343378	Loss : 0	Loss% : 0.000

Trial: 1 / FS: 64 / Iter: 7	Ethernet - 010	Ethernet - 009	QT-Rfc2544Tput-Endpoint Set-1 - Flow Group 0002	98.59	98.59	1467169.8	751.19	Tx : 29343378 Rx : 29343378 Loss : 0 Loss% : 0.000
Trial: 1 / FS: 64 / Iter: 8	Ethernet - 009	Ethernet - 010	QT-Rfc2544Tput-Endpoint Set-1 - Flow Group 0001	99.30	99.30	1477633.4	756.55	Tx : 29552641 Rx : 29552641 Loss : 0 Loss% : 0.000
Trial: 1 / FS: 64 / Iter: 8	Ethernet - 010	Ethernet - 009	QT-Rfc2544Tput-Endpoint Set-1 - Flow Group 0002	99.30	99.30	1477633.5	756.55	Tx : 29552641 Rx : 29552641 Loss : 0 Loss% : 0.000
Trial: 1 / FS: 64 / Iter: 9	Ethernet - 009	Ethernet - 010	QT-Rfc2544Tput-Endpoint Set-1 - Flow Group 0001	100.00	100.00	1488095.2	761.91	Tx : 29761905 Rx : 29761905 Loss : 0 Loss% : 0.000
Trial: 1 / FS: 64 / Iter: 9	Ethernet - 010	Ethernet - 009	QT-Rfc2544Tput-Endpoint Set-1 - Flow Group 0002	100.00	100.00	1488095.2	761.91	Tx : 29761905 Rx : 29761905 Loss : 0 Loss% : 0.000
Trial: 1 / FS: 128 / Iter: 1	Ethernet - 009	Ethernet - 010	QT-Rfc2544Tput-Endpoint Set-1 - Flow Group 0001	10.00	10.00	84459.5	86.49	Tx : 1689189 Rx : 1689189 Loss : 0 Loss% : 0.000
Trial: 1 / FS: 128 / Iter: 1	Ethernet - 010	Ethernet - 009	QT-Rfc2544Tput-Endpoint Set-1 - Flow Group 0002	10.00	10.00	84459.5	86.49	Tx : 1689189 Rx : 1689189 Loss : 0 Loss% : 0.000
Trial: 1 / FS: 128 / Iter: 2	Ethernet - 009	Ethernet - 010	QT-Rfc2544Tput-Endpoint Set-1 - Flow Group 0001	55.00	55.00	464527.2	475.68	Tx : 9290541 Rx : 9290541 Loss : 0 Loss% : 0.000
Trial: 1 / FS: 128 / Iter: 2	Ethernet - 010	Ethernet - 009	QT-Rfc2544Tput-Endpoint Set-1 - Flow Group 0002	55.00	55.00	464527.2	475.68	Tx : 9290541 Rx : 9290541 Loss : 0 Loss% : 0.000
Trial: 1 / FS: 128 / Iter: 3	Ethernet - 009	Ethernet - 010	QT-Rfc2544Tput-Endpoint Set-1 - Flow Group 0001	77.50	77.50	654561.0	670.27	Tx : 13091216 Rx : 13091216 Loss : 0 Loss% : 0.000
Trial: 1 / FS: 128 / Iter: 3	Ethernet - 010	Ethernet - 009	QT-Rfc2544Tput-Endpoint Set-1 - Flow Group 0002	77.50	77.50	654561.0	670.27	Tx : 13091216 Rx : 13091216 Loss : 0 Loss% : 0.000
Trial: 1 / FS: 128 / Iter: 4	Ethernet - 009	Ethernet - 010	QT-Rfc2544Tput-Endpoint Set-1 - Flow Group 0001	88.75	88.75	749577.8	767.57	Tx : 14991554 Rx : 14991554 Loss : 0 Loss% : 0.000
Trial: 1 / FS: 128 / Iter: 4	Ethernet - 010	Ethernet - 009	QT-Rfc2544Tput-Endpoint Set-1 - Flow Group 0002	88.75	88.75	749577.8	767.57	Tx : 14991554 Rx : 14991554 Loss : 0 Loss% : 0.000
Trial: 1 / FS: 128 / Iter: 5	Ethernet - 009	Ethernet - 010	QT-Rfc2544Tput-Endpoint Set-1 - Flow Group 0001	94.38	94.38	797086.1	816.22	Tx : 15941723 Rx : 15941723 Loss : 0 Loss% : 0.000
Trial: 1 / FS: 128 / Iter: 5	Ethernet - 010	Ethernet - 009	QT-Rfc2544Tput-Endpoint Set-1 - Flow Group 0002	94.38	94.38	797086.2	816.22	Tx : 15941723 Rx : 15941723 Loss : 0 Loss% : 0.000

Trial: 1 / FS: 128 / Iter: 6	Ethernet - 009	Ethernet - 010	QT-Rfc2544Tput-Endpoint Set-1 - Flow Group 0001	97.19	97.19	820840.6	840.54	Tx : Rx : Loss : Loss% :	16416807 16416807 0 0.000
Trial: 1 / FS: 128 / Iter: 6	Ethernet - 010	Ethernet - 009	QT-Rfc2544Tput-Endpoint Set-1 - Flow Group 0002	97.19	97.19	820840.6	840.54	Tx : Rx : Loss : Loss% :	16416807 16416807 0 0.000
Trial: 1 / FS: 128 / Iter: 7	Ethernet - 009	Ethernet - 010	QT-Rfc2544Tput-Endpoint Set-1 - Flow Group 0001	98.59	98.59	832717.5	852.70	Tx : Rx : Loss : Loss% :	16654350 16654350 0 0.000
Trial: 1 / FS: 128 / Iter: 7	Ethernet - 010	Ethernet - 009	QT-Rfc2544Tput-Endpoint Set-1 - Flow Group 0002	98.59	98.59	832717.5	852.70	Tx : Rx : Loss : Loss% :	16654350 16654350 0 0.000
Trial: 1 / FS: 128 / Iter: 8	Ethernet - 009	Ethernet - 010	QT-Rfc2544Tput-Endpoint Set-1 - Flow Group 0001	99.30	99.30	838656.3	858.78	Tx : Rx : Loss : Loss% :	16773121 16773121 0 0.000
Trial: 1 / FS: 128 / Iter: 8	Ethernet - 010	Ethernet - 009	QT-Rfc2544Tput-Endpoint Set-1 - Flow Group 0002	99.30	99.30	838656.3	858.78	Tx : Rx : Loss : Loss% :	16773121 16773121 0 0.000
Trial: 1 / FS: 128 / Iter: 9	Ethernet - 009	Ethernet - 010	QT-Rfc2544Tput-Endpoint Set-1 - Flow Group 0001	100.00	100.00	844594.6	864.87	Tx : Rx : Loss : Loss% :	16891892 16891892 0 0.000
Trial: 1 / FS: 128 / Iter: 9	Ethernet - 010	Ethernet - 009	QT-Rfc2544Tput-Endpoint Set-1 - Flow Group 0002	100.00	100.00	844594.6	864.87	Tx : Rx : Loss : Loss% :	16891892 16891892 0 0.000
Trial: 1 / FS: 256 / Iter: 1	Ethernet - 009	Ethernet - 010	QT-Rfc2544Tput-Endpoint Set-1 - Flow Group 0001	10.00	10.00	45289.9	92.75	Tx : Rx : Loss : Loss% :	905797 905797 0 0.000
Trial: 1 / FS: 256 / Iter: 1	Ethernet - 010	Ethernet - 009	QT-Rfc2544Tput-Endpoint Set-1 - Flow Group 0002	10.00	10.00	45289.9	92.75	Tx : Rx : Loss : Loss% :	905797 905797 0 0.000
Trial: 1 / FS: 256 / Iter: 2	Ethernet - 009	Ethernet - 010	QT-Rfc2544Tput-Endpoint Set-1 - Flow Group 0001	55.00	55.00	249094.2	510.15	Tx : Rx : Loss : Loss% :	4981884 4981884 0 0.000
Trial: 1 / FS: 256 / Iter: 2	Ethernet - 010	Ethernet - 009	QT-Rfc2544Tput-Endpoint Set-1 - Flow Group 0002	55.00	55.00	249094.2	510.15	Tx : Rx : Loss : Loss% :	4981884 4981884 0 0.000
Trial: 1 / FS: 256 / Iter: 3	Ethernet - 009	Ethernet - 010	QT-Rfc2544Tput-Endpoint Set-1 - Flow Group 0001	77.50	77.50	350996.4	718.84	Tx : Rx : Loss : Loss% :	7019928 7019928 0 0.000
Trial: 1 / FS: 256 / Iter: 3	Ethernet - 010	Ethernet - 009	QT-Rfc2544Tput-Endpoint Set-1 - Flow Group 0002	77.50	77.50	350996.4	718.84	Tx : Rx : Loss : Loss% :	7019928 7019928 0 0.000
Trial: 1 / FS: 256 / Iter: 4	Ethernet - 009	Ethernet - 010	QT-Rfc2544Tput-Endpoint Set-1 - Flow Group 0001	88.75	88.75	401947.6	823.19	Tx : Rx : Loss : Loss% :	8038949 8038949 0 0.000

Trial: 1 / FS: 256 / Iter: 4	Ethernet - 010	Ethernet - 009	QT-Rfc2544Tput-Endpoint Set-1 - Flow Group 0002	88.75	88.75	401947.6	823.19	Tx : 8038949 Rx : 8038949 Loss : 0 Loss% : 0.000
Trial: 1 / FS: 256 / Iter: 5	Ethernet - 009	Ethernet - 010	QT-Rfc2544Tput-Endpoint Set-1 - Flow Group 0001	94.38	94.38	427423.1	875.36	Tx : 8548460 Rx : 8548460 Loss : 0 Loss% : 0.000
Trial: 1 / FS: 256 / Iter: 5	Ethernet - 010	Ethernet - 009	QT-Rfc2544Tput-Endpoint Set-1 - Flow Group 0002	94.38	94.38	427423.1	875.36	Tx : 8548460 Rx : 8548460 Loss : 0 Loss% : 0.000
Trial: 1 / FS: 256 / Iter: 6	Ethernet - 009	Ethernet - 010	QT-Rfc2544Tput-Endpoint Set-1 - Flow Group 0001	97.19	97.19	440160.8	901.45	Tx : 8803216 Rx : 8803216 Loss : 0 Loss% : 0.000
Trial: 1 / FS: 256 / Iter: 6	Ethernet - 010	Ethernet - 009	QT-Rfc2544Tput-Endpoint Set-1 - Flow Group 0002	97.19	97.19	440160.8	901.45	Tx : 8803216 Rx : 8803216 Loss : 0 Loss% : 0.000
Trial: 1 / FS: 256 / Iter: 7	Ethernet - 009	Ethernet - 010	QT-Rfc2544Tput-Endpoint Set-1 - Flow Group 0001	98.59	98.59	446529.8	914.49	Tx : 8930593 Rx : 8930593 Loss : 0 Loss% : 0.000
Trial: 1 / FS: 256 / Iter: 7	Ethernet - 010	Ethernet - 009	QT-Rfc2544Tput-Endpoint Set-1 - Flow Group 0002	98.59	98.59	446529.8	914.49	Tx : 8930593 Rx : 8930593 Loss : 0 Loss% : 0.000
Trial: 1 / FS: 256 / Iter: 8	Ethernet - 009	Ethernet - 010	QT-Rfc2544Tput-Endpoint Set-1 - Flow Group 0001	99.30	99.30	449714.2	921.02	Tx : 8994282 Rx : 8994282 Loss : 0 Loss% : 0.000
Trial: 1 / FS: 256 / Iter: 8	Ethernet - 010	Ethernet - 009	QT-Rfc2544Tput-Endpoint Set-1 - Flow Group 0002	99.30	99.30	449714.2	921.02	Tx : 8994282 Rx : 8994282 Loss : 0 Loss% : 0.000
Trial: 1 / FS: 256 / Iter: 9	Ethernet - 009	Ethernet - 010	QT-Rfc2544Tput-Endpoint Set-1 - Flow Group 0001	100.00	100.00	452898.5	927.54	Tx : 9057971 Rx : 9057971 Loss : 0 Loss% : 0.000
Trial: 1 / FS: 256 / Iter: 9	Ethernet - 010	Ethernet - 009	QT-Rfc2544Tput-Endpoint Set-1 - Flow Group 0002	100.00	100.00	452898.6	927.54	Tx : 9057971 Rx : 9057971 Loss : 0 Loss% : 0.000
Trial: 1 / FS: 512 / Iter: 1	Ethernet - 009	Ethernet - 010	QT-Rfc2544Tput-Endpoint Set-1 - Flow Group 0001	10.00	10.00	23496.2	96.24	Tx : 469925 Rx : 469925 Loss : 0 Loss% : 0.000
Trial: 1 / FS: 512 / Iter: 1	Ethernet - 010	Ethernet - 009	QT-Rfc2544Tput-Endpoint Set-1 - Flow Group 0002	10.00	10.00	23496.2	96.24	Tx : 469925 Rx : 469925 Loss : 0 Loss% : 0.000
Trial: 1 / FS: 512 / Iter: 2	Ethernet - 009	Ethernet - 010	QT-Rfc2544Tput-Endpoint Set-1 - Flow Group 0001	55.00	55.00	129229.3	529.32	Tx : 2584586 Rx : 2584586 Loss : 0 Loss% : 0.000
Trial: 1 / FS: 512 / Iter: 2	Ethernet - 010	Ethernet - 009	QT-Rfc2544Tput-Endpoint Set-1 - Flow Group 0002	55.00	55.00	129229.3	529.32	Tx : 2584586 Rx : 2584586 Loss : 0 Loss% : 0.000

Trial: 1 / FS: 512 / Iter: 3	Ethernet - 009	Ethernet - 010	QT-Rfc2544Tput-Endpoint Set-1 - Flow Group 0001	77.50	77.50	182095.9	745.87	Tx : Rx : Loss : Loss% :	3641917 3641917 0 0.000
Trial: 1 / FS: 512 / Iter: 3	Ethernet - 010	Ethernet - 009	QT-Rfc2544Tput-Endpoint Set-1 - Flow Group 0002	77.50	77.50	182095.9	745.87	Tx : Rx : Loss : Loss% :	3641917 3641917 0 0.000
Trial: 1 / FS: 512 / Iter: 4	Ethernet - 009	Ethernet - 010	QT-Rfc2544Tput-Endpoint Set-1 - Flow Group 0001	88.75	88.75	208529.1	854.14	Tx : Rx : Loss : Loss% :	4170583 4170583 0 0.000
Trial: 1 / FS: 512 / Iter: 4	Ethernet - 010	Ethernet - 009	QT-Rfc2544Tput-Endpoint Set-1 - Flow Group 0002	88.75	88.75	208529.1	854.14	Tx : Rx : Loss : Loss% :	4170583 4170583 0 0.000
Trial: 1 / FS: 512 / Iter: 5	Ethernet - 009	Ethernet - 010	QT-Rfc2544Tput-Endpoint Set-1 - Flow Group 0001	94.38	94.38	221745.8	908.27	Tx : Rx : Loss : Loss% :	4434915 4434915 0 0.000
Trial: 1 / FS: 512 / Iter: 5	Ethernet - 010	Ethernet - 009	QT-Rfc2544Tput-Endpoint Set-1 - Flow Group 0002	94.38	94.38	221745.8	908.27	Tx : Rx : Loss : Loss% :	4434915 4434915 0 0.000
Trial: 1 / FS: 512 / Iter: 6	Ethernet - 009	Ethernet - 010	QT-Rfc2544Tput-Endpoint Set-1 - Flow Group 0001	97.19	97.19	228354.1	935.34	Tx : Rx : Loss : Loss% :	4567082 4567082 0 0.000
Trial: 1 / FS: 512 / Iter: 6	Ethernet - 010	Ethernet - 009	QT-Rfc2544Tput-Endpoint Set-1 - Flow Group 0002	97.19	97.19	228354.1	935.34	Tx : Rx : Loss : Loss% :	4567082 4567082 0 0.000
Trial: 1 / FS: 512 / Iter: 7	Ethernet - 009	Ethernet - 010	QT-Rfc2544Tput-Endpoint Set-1 - Flow Group 0001	98.59	98.59	231658.3	948.87	Tx : Rx : Loss : Loss% :	4633165 4633165 0 0.000
Trial: 1 / FS: 512 / Iter: 7	Ethernet - 010	Ethernet - 009	QT-Rfc2544Tput-Endpoint Set-1 - Flow Group 0002	98.59	98.59	231658.3	948.87	Tx : Rx : Loss : Loss% :	4633165 4633165 0 0.000
Trial: 1 / FS: 512 / Iter: 8	Ethernet - 009	Ethernet - 010	QT-Rfc2544Tput-Endpoint Set-1 - Flow Group 0001	99.30	99.30	233310.3	955.64	Tx : Rx : Loss : Loss% :	4666207 4666207 0 0.000
Trial: 1 / FS: 512 / Iter: 8	Ethernet - 010	Ethernet - 009	QT-Rfc2544Tput-Endpoint Set-1 - Flow Group 0002	99.30	99.30	233310.3	955.64	Tx : Rx : Loss : Loss% :	4666207 4666207 0 0.000
Trial: 1 / FS: 512 / Iter: 9	Ethernet - 009	Ethernet - 010	QT-Rfc2544Tput-Endpoint Set-1 - Flow Group 0001	100.00	100.00	234962.4	962.41	Tx : Rx : Loss : Loss% :	4699248 4699248 0 0.000
Trial: 1 / FS: 512 / Iter: 9	Ethernet - 010	Ethernet - 009	QT-Rfc2544Tput-Endpoint Set-1 - Flow Group 0002	100.00	100.00	234962.4	962.41	Tx : Rx : Loss : Loss% :	4699248 4699248 0 0.000
Trial: 1 / FS: 1024 / Iter: 1	Ethernet - 009	Ethernet - 010	QT-Rfc2544Tput-Endpoint Set-1 - Flow Group 0001	10.00	10.00	11973.2	98.08	Tx : Rx : Loss : Loss% :	239464 239464 0 0.000

Trial: 1 / FS: 1024 / Iter: 1	Ethernet - 010	Ethernet - 009	QT-Rfc2544Tput-Endpoint Set-1 - Flow Group 0002	10.00	10.00	11973.2	98.08	Tx : Rx : Loss : Loss% :	239464 239464 0 0.000
Trial: 1 / FS: 1024 / Iter: 2	Ethernet - 009	Ethernet - 010	QT-Rfc2544Tput-Endpoint Set-1 - Flow Group 0001	55.00	55.00	65852.5	539.46	Tx : Rx : Loss : Loss% :	1317050 1317050 0 0.000
Trial: 1 / FS: 1024 / Iter: 2	Ethernet - 010	Ethernet - 009	QT-Rfc2544Tput-Endpoint Set-1 - Flow Group 0002	55.00	55.00	65852.5	539.46	Tx : Rx : Loss : Loss% :	1317050 1317050 0 0.000
Trial: 1 / FS: 1024 / Iter: 3	Ethernet - 009	Ethernet - 010	QT-Rfc2544Tput-Endpoint Set-1 - Flow Group 0001	77.50	77.50	92792.2	760.15	Tx : Rx : Loss : Loss% :	1855843 1855843 0 0.000
Trial: 1 / FS: 1024 / Iter: 3	Ethernet - 010	Ethernet - 009	QT-Rfc2544Tput-Endpoint Set-1 - Flow Group 0002	77.50	77.50	92792.2	760.15	Tx : Rx : Loss : Loss% :	1855843 1855843 0 0.000
Trial: 1 / FS: 1024 / Iter: 4	Ethernet - 009	Ethernet - 010	QT-Rfc2544Tput-Endpoint Set-1 - Flow Group 0001	88.75	88.75	106262.0	870.50	Tx : Rx : Loss : Loss% :	2125239 2125239 0 0.000
Trial: 1 / FS: 1024 / Iter: 4	Ethernet - 010	Ethernet - 009	QT-Rfc2544Tput-Endpoint Set-1 - Flow Group 0002	88.75	88.75	106262.0	870.50	Tx : Rx : Loss : Loss% :	2125239 2125239 0 0.000
Trial: 1 / FS: 1024 / Iter: 5	Ethernet - 009	Ethernet - 010	QT-Rfc2544Tput-Endpoint Set-1 - Flow Group 0001	94.38	94.38	112996.9	925.67	Tx : Rx : Loss : Loss% :	2259938 2259938 0 0.000
Trial: 1 / FS: 1024 / Iter: 5	Ethernet - 010	Ethernet - 009	QT-Rfc2544Tput-Endpoint Set-1 - Flow Group 0002	94.38	94.38	112996.9	925.67	Tx : Rx : Loss : Loss% :	2259938 2259938 0 0.000
Trial: 1 / FS: 1024 / Iter: 6	Ethernet - 009	Ethernet - 010	QT-Rfc2544Tput-Endpoint Set-1 - Flow Group 0001	97.19	97.19	116364.3	953.26	Tx : Rx : Loss : Loss% :	2327287 2327287 0 0.000
Trial: 1 / FS: 1024 / Iter: 6	Ethernet - 010	Ethernet - 009	QT-Rfc2544Tput-Endpoint Set-1 - Flow Group 0002	97.19	97.19	116364.3	953.26	Tx : Rx : Loss : Loss% :	2327287 2327287 0 0.000
Trial: 1 / FS: 1024 / Iter: 7	Ethernet - 009	Ethernet - 010	QT-Rfc2544Tput-Endpoint Set-1 - Flow Group 0001	98.59	98.59	118048.1	967.05	Tx : Rx : Loss : Loss% :	2360961 2360961 0 0.000
Trial: 1 / FS: 1024 / Iter: 7	Ethernet - 010	Ethernet - 009	QT-Rfc2544Tput-Endpoint Set-1 - Flow Group 0002	98.59	98.59	118048.1	967.05	Tx : Rx : Loss : Loss% :	2360961 2360961 0 0.000
Trial: 1 / FS: 1024 / Iter: 8	Ethernet - 009	Ethernet - 010	QT-Rfc2544Tput-Endpoint Set-1 - Flow Group 0001	99.30	99.30	118889.9	973.95	Tx : Rx : Loss : Loss% :	2377799 2377799 0 0.000
Trial: 1 / FS: 1024 / Iter: 8	Ethernet - 010	Ethernet - 009	QT-Rfc2544Tput-Endpoint Set-1 - Flow Group 0002	99.30	99.30	118889.9	973.95	Tx : Rx : Loss : Loss% :	2377799 2377799 0 0.000



Trial: 1 / FS: 1024 / Iter: 9	Ethernet - 009	Ethernet - 010	QT-Rfc2544Tput-Endpoint Set-1 - Flow Group 0001	100.00	100.00	119731.8	980.84	Tx : Rx : Loss : Loss% :	2394636 2394636 0 0.000
Trial: 1 / FS: 1024 / Iter: 9	Ethernet - 010	Ethernet - 009	QT-Rfc2544Tput-Endpoint Set-1 - Flow Group 0002	100.00	100.00	119731.8	980.84	Tx : Rx : Loss : Loss% :	2394636 2394636 0 0.000
Trial: 1 / FS: 1280 / Iter: 1	Ethernet - 009	Ethernet - 010	QT-Rfc2544Tput-Endpoint Set-1 - Flow Group 0001	10.00	10.00	9615.4	98.46	Tx : Rx : Loss : Loss% :	192308 192308 0 0.000
Trial: 1 / FS: 1280 / Iter: 1	Ethernet - 010	Ethernet - 009	QT-Rfc2544Tput-Endpoint Set-1 - Flow Group 0002	10.00	10.00	9615.4	98.46	Tx : Rx : Loss : Loss% :	192308 192308 0 0.000
Trial: 1 / FS: 1280 / Iter: 2	Ethernet - 009	Ethernet - 010	QT-Rfc2544Tput-Endpoint Set-1 - Flow Group 0001	55.00	55.00	52884.6	541.54	Tx : Rx : Loss : Loss% :	1057692 1057692 0 0.000
Trial: 1 / FS: 1280 / Iter: 2	Ethernet - 010	Ethernet - 009	QT-Rfc2544Tput-Endpoint Set-1 - Flow Group 0002	55.00	55.00	52884.6	541.54	Tx : Rx : Loss : Loss% :	1057692 1057692 0 0.000
Trial: 1 / FS: 1280 / Iter: 3	Ethernet - 009	Ethernet - 010	QT-Rfc2544Tput-Endpoint Set-1 - Flow Group 0001	77.50	77.50	74519.2	763.08	Tx : Rx : Loss : Loss% :	1490385 1490385 0 0.000
Trial: 1 / FS: 1280 / Iter: 3	Ethernet - 010	Ethernet - 009	QT-Rfc2544Tput-Endpoint Set-1 - Flow Group 0002	77.50	77.50	74519.2	763.08	Tx : Rx : Loss : Loss% :	1490385 1490385 0 0.000
Trial: 1 / FS: 1280 / Iter: 4	Ethernet - 009	Ethernet - 010	QT-Rfc2544Tput-Endpoint Set-1 - Flow Group 0001	88.75	88.75	85336.5	873.85	Tx : Rx : Loss : Loss% :	1706731 1706731 0 0.000
Trial: 1 / FS: 1280 / Iter: 4	Ethernet - 010	Ethernet - 009	QT-Rfc2544Tput-Endpoint Set-1 - Flow Group 0002	88.75	88.75	85336.5	873.85	Tx : Rx : Loss : Loss% :	1706731 1706731 0 0.000
Trial: 1 / FS: 1280 / Iter: 5	Ethernet - 009	Ethernet - 010	QT-Rfc2544Tput-Endpoint Set-1 - Flow Group 0001	94.38	94.38	90745.2	929.23	Tx : Rx : Loss : Loss% :	1814904 1814904 0 0.000
Trial: 1 / FS: 1280 / Iter: 5	Ethernet - 010	Ethernet - 009	QT-Rfc2544Tput-Endpoint Set-1 - Flow Group 0002	94.38	94.38	90745.2	929.23	Tx : Rx : Loss : Loss% :	1814904 1814904 0 0.000
Trial: 1 / FS: 1280 / Iter: 6	Ethernet - 009	Ethernet - 010	QT-Rfc2544Tput-Endpoint Set-1 - Flow Group 0001	97.19	97.19	93449.5	956.92	Tx : Rx : Loss : Loss% :	1868990 1868990 0 0.000
Trial: 1 / FS: 1280 / Iter: 6	Ethernet - 010	Ethernet - 009	QT-Rfc2544Tput-Endpoint Set-1 - Flow Group 0002	97.19	97.19	93449.5	956.92	Tx : Rx : Loss : Loss% :	1868990 1868990 0 0.000
Trial: 1 / FS: 1280 / Iter: 7	Ethernet - 009	Ethernet - 010	QT-Rfc2544Tput-Endpoint Set-1 - Flow Group 0001	98.59	98.59	94801.7	970.77	Tx : Rx : Loss : Loss% :	1896034 1896034 0 0.000

Trial: 1 / FS: 1280 / Iter: 7	Ethernet - 010	Ethernet - 009	QT-Rfc2544Tput-Endpoint Set-1 - Flow Group 0002	98.59	98.59	94801.7	970.77	Tx : Rx : Loss : Loss% :	1896034 1896034 0 0.000
Trial: 1 / FS: 1280 / Iter: 8	Ethernet - 009	Ethernet - 010	QT-Rfc2544Tput-Endpoint Set-1 - Flow Group 0001	99.30	99.30	95477.8	977.69	Tx : Rx : Loss : Loss% :	1909555 1909555 0 0.000
Trial: 1 / FS: 1280 / Iter: 8	Ethernet - 010	Ethernet - 009	QT-Rfc2544Tput-Endpoint Set-1 - Flow Group 0002	99.30	99.30	95477.8	977.69	Tx : Rx : Loss : Loss% :	1909555 1909555 0 0.000
Trial: 1 / FS: 1280 / Iter: 9	Ethernet - 009	Ethernet - 010	QT-Rfc2544Tput-Endpoint Set-1 - Flow Group 0001	100.00	100.00	96153.8	984.62	Tx : Rx : Loss : Loss% :	1923077 1923077 0 0.000
Trial: 1 / FS: 1280 / Iter: 9	Ethernet - 010	Ethernet - 009	QT-Rfc2544Tput-Endpoint Set-1 - Flow Group 0002	100.00	100.00	96153.8	984.62	Tx : Rx : Loss : Loss% :	1923077 1923077 0 0.000
Trial: 1 / FS: 1518 / Iter: 1	Ethernet - 009	Ethernet - 010	QT-Rfc2544Tput-Endpoint Set-1 - Flow Group 0001	10.00	10.00	8127.4	98.70	Tx : Rx : Loss : Loss% :	162549 162549 0 0.000
Trial: 1 / FS: 1518 / Iter: 1	Ethernet - 010	Ethernet - 009	QT-Rfc2544Tput-Endpoint Set-1 - Flow Group 0002	10.00	10.00	8127.4	98.70	Tx : Rx : Loss : Loss% :	162549 162549 0 0.000
Trial: 1 / FS: 1518 / Iter: 2	Ethernet - 009	Ethernet - 010	QT-Rfc2544Tput-Endpoint Set-1 - Flow Group 0001	55.00	55.00	44700.9	542.85	Tx : Rx : Loss : Loss% :	894018 894018 0 0.000
Trial: 1 / FS: 1518 / Iter: 2	Ethernet - 010	Ethernet - 009	QT-Rfc2544Tput-Endpoint Set-1 - Flow Group 0002	55.00	55.00	44700.9	542.85	Tx : Rx : Loss : Loss% :	894018 894018 0 0.000
Trial: 1 / FS: 1518 / Iter: 3	Ethernet - 009	Ethernet - 010	QT-Rfc2544Tput-Endpoint Set-1 - Flow Group 0001	77.50	77.50	62987.6	764.92	Tx : Rx : Loss : Loss% :	1259753 1259753 0 0.000
Trial: 1 / FS: 1518 / Iter: 3	Ethernet - 010	Ethernet - 009	QT-Rfc2544Tput-Endpoint Set-1 - Flow Group 0002	77.50	77.50	62987.6	764.92	Tx : Rx : Loss : Loss% :	1259753 1259753 0 0.000
Trial: 1 / FS: 1518 / Iter: 4	Ethernet - 009	Ethernet - 010	QT-Rfc2544Tput-Endpoint Set-1 - Flow Group 0001	88.75	88.75	72131.0	875.96	Tx : Rx : Loss : Loss% :	1442620 1442620 0 0.000
Trial: 1 / FS: 1518 / Iter: 4	Ethernet - 010	Ethernet - 009	QT-Rfc2544Tput-Endpoint Set-1 - Flow Group 0002	88.75	88.75	72131.0	875.96	Tx : Rx : Loss : Loss% :	1442620 1442620 0 0.000
Trial: 1 / FS: 1518 / Iter: 5	Ethernet - 009	Ethernet - 010	QT-Rfc2544Tput-Endpoint Set-1 - Flow Group 0001	94.38	94.38	76702.7	931.48	Tx : Rx : Loss : Loss% :	1534054 1534054 0 0.000
Trial: 1 / FS: 1518 / Iter: 5	Ethernet - 010	Ethernet - 009	QT-Rfc2544Tput-Endpoint Set-1 - Flow Group 0002	94.38	94.38	76702.7	931.48	Tx : Rx : Loss : Loss% :	1534054 1534054 0 0.000

Trial: 1 / FS: 1518 / Iter: 6	Ethernet - 009	Ethernet - 010	QT-Rfc2544Tput-Endpoint Set-1 - Flow Group 0001	97.19	97.19	78988.5	959.24	Tx : 1579771 Rx : 1579771 Loss : 0 Loss% : 0.000
Trial: 1 / FS: 1518 / Iter: 6	Ethernet - 010	Ethernet - 009	QT-Rfc2544Tput-Endpoint Set-1 - Flow Group 0002	97.19	97.19	78988.5	959.24	Tx : 1579771 Rx : 1579771 Loss : 0 Loss% : 0.000
Trial: 1 / FS: 1518 / Iter: 7	Ethernet - 009	Ethernet - 010	QT-Rfc2544Tput-Endpoint Set-1 - Flow Group 0001	98.59	98.59	80131.5	973.12	Tx : 1602629 Rx : 1602629 Loss : 0 Loss% : 0.000
Trial: 1 / FS: 1518 / Iter: 7	Ethernet - 010	Ethernet - 009	QT-Rfc2544Tput-Endpoint Set-1 - Flow Group 0002	98.59	98.59	80131.5	973.12	Tx : 1602629 Rx : 1602629 Loss : 0 Loss% : 0.000
Trial: 1 / FS: 1518 / Iter: 8	Ethernet - 009	Ethernet - 010	QT-Rfc2544Tput-Endpoint Set-1 - Flow Group 0001	99.30	99.30	80702.9	980.06	Tx : 1614058 Rx : 1614058 Loss : 0 Loss% : 0.000
Trial: 1 / FS: 1518 / Iter: 8	Ethernet - 010	Ethernet - 009	QT-Rfc2544Tput-Endpoint Set-1 - Flow Group 0002	99.30	99.30	80702.9	980.06	Tx : 1614058 Rx : 1614058 Loss : 0 Loss% : 0.000
Trial: 1 / FS: 1518 / Iter: 9	Ethernet - 009	Ethernet - 010	QT-Rfc2544Tput-Endpoint Set-1 - Flow Group 0001	100.00	100.00	81274.4	987.00	Tx : 1625488 Rx : 1625488 Loss : 0 Loss% : 0.000
Trial: 1 / FS: 1518 / Iter: 9	Ethernet - 010	Ethernet - 009	QT-Rfc2544Tput-Endpoint Set-1 - Flow Group 0002	100.00	100.00	81274.4	987.00	Tx : 1625488 Rx : 1625488 Loss : 0 Loss% : 0.000

## RFC2544 - Throughput/Latency - Iteration Statistics - Part 2 of 2

Trial / Framesize / Iteration	Tx Port	Rx Port	Flow Group	Min Latency (ns)	Max Latency (ns)	Avg Latency (ns)
Trial: 1 / FS: 64 / Iter: 1	Ethernet - 009	Ethernet - 010	QT-Rfc2544Tput-Endpoint Set-1 - Flow Group 0001	3080	3657	3377.00
Trial: 1 / FS: 64 / Iter: 1	Ethernet - 010	Ethernet - 009	QT-Rfc2544Tput-Endpoint Set-1 - Flow Group 0002	3135	3727	3458.00
Trial: 1 / FS: 64 / Iter: 2	Ethernet - 009	Ethernet - 010	QT-Rfc2544Tput-Endpoint Set-1 - Flow Group 0001	3062	3657	3373.00
Trial: 1 / FS: 64 / Iter: 2	Ethernet - 010	Ethernet - 009	QT-Rfc2544Tput-Endpoint Set-1 - Flow Group 0002	3135	3730	3462.00
Trial: 1 / FS: 64 / Iter: 3	Ethernet - 009	Ethernet - 010	QT-Rfc2544Tput-Endpoint Set-1 - Flow Group 0001	3062	3657	3373.00
Trial: 1 / FS: 64 / Iter: 3	Ethernet - 010	Ethernet - 009	QT-Rfc2544Tput-Endpoint Set-1 - Flow Group 0002	3135	3730	3462.00
Trial: 1 / FS: 64 / Iter: 4	Ethernet - 009	Ethernet - 010	QT-Rfc2544Tput-Endpoint Set-1 - Flow Group 0001	3127	3657	3397.00
Trial: 1 / FS: 64 / Iter: 4	Ethernet - 010	Ethernet - 009	QT-Rfc2544Tput-Endpoint Set-1 - Flow Group 0002	3215	3730	3484.00
Trial: 1 / FS: 64 / Iter: 5	Ethernet - 009	Ethernet - 010	QT-Rfc2544Tput-Endpoint Set-1 - Flow Group 0001	3240	3657	3446.00
Trial: 1 / FS: 64 / Iter: 5	Ethernet - 010	Ethernet - 009	QT-Rfc2544Tput-Endpoint Set-1 - Flow Group 0002	3310	3730	3527.00
Trial: 1 / FS: 64 / Iter: 6	Ethernet - 009	Ethernet - 010	QT-Rfc2544Tput-Endpoint Set-1 - Flow Group 0001	3287	4535	3484.00
Trial: 1 / FS: 64 / Iter: 6	Ethernet - 010	Ethernet - 009	QT-Rfc2544Tput-Endpoint Set-1 - Flow Group 0002	3360	4545	3564.00
Trial: 1 / FS: 64 / Iter: 7	Ethernet - 009	Ethernet - 010	QT-Rfc2544Tput-Endpoint Set-1 - Flow Group 0001	3335	3657	3509.00
Trial: 1 / FS: 64 / Iter: 7	Ethernet - 010	Ethernet - 009	QT-Rfc2544Tput-Endpoint Set-1 - Flow Group 0002	3422	3730	3589.00
Trial: 1 / FS: 64 / Iter: 8	Ethernet - 009	Ethernet - 010	QT-Rfc2544Tput-Endpoint Set-1 - Flow Group 0001	3097	3657	3538.00
Trial: 1 / FS: 64 / Iter: 8	Ethernet - 010	Ethernet - 009	QT-Rfc2544Tput-Endpoint Set-1 - Flow Group 0002	3455	3730	3617.00
Trial: 1 / FS: 64 / Iter: 9	Ethernet - 009	Ethernet - 010	QT-Rfc2544Tput-Endpoint Set-1 - Flow Group 0001	3400	3657	3590.00
Trial: 1 / FS: 64 / Iter: 9	Ethernet - 010	Ethernet - 009	QT-Rfc2544Tput-Endpoint Set-1 - Flow Group 0002	3455	3745	3667.00
Trial: 1 / FS: 128 / Iter: 1	Ethernet - 009	Ethernet - 010	QT-Rfc2544Tput-Endpoint Set-1 - Flow Group 0001	3142	3720	3425.00

Trial: 1 / FS: 128 / Iter: 1	Ethernet - 010	Ethernet - 009	QT-Rfc2544Tput-Endpoint Set-1 - Flow Group 0002	3215	3792	3517.00
Trial: 1 / FS: 128 / Iter: 2	Ethernet - 009	Ethernet - 010	QT-Rfc2544Tput-Endpoint Set-1 - Flow Group 0001	3127	3720	3423.00
Trial: 1 / FS: 128 / Iter: 2	Ethernet - 010	Ethernet - 009	QT-Rfc2544Tput-Endpoint Set-1 - Flow Group 0002	3215	3792	3513.00
Trial: 1 / FS: 128 / Iter: 3	Ethernet - 009	Ethernet - 010	QT-Rfc2544Tput-Endpoint Set-1 - Flow Group 0001	3142	3720	3424.00
Trial: 1 / FS: 128 / Iter: 3	Ethernet - 010	Ethernet - 009	QT-Rfc2544Tput-Endpoint Set-1 - Flow Group 0002	3215	3792	3515.00
Trial: 1 / FS: 128 / Iter: 4	Ethernet - 009	Ethernet - 010	QT-Rfc2544Tput-Endpoint Set-1 - Flow Group 0001	3190	4277	3453.00
Trial: 1 / FS: 128 / Iter: 4	Ethernet - 010	Ethernet - 009	QT-Rfc2544Tput-Endpoint Set-1 - Flow Group 0002	3262	4320	3544.00
Trial: 1 / FS: 128 / Iter: 5	Ethernet - 009	Ethernet - 010	QT-Rfc2544Tput-Endpoint Set-1 - Flow Group 0001	3270	3720	3487.00
Trial: 1 / FS: 128 / Iter: 5	Ethernet - 010	Ethernet - 009	QT-Rfc2544Tput-Endpoint Set-1 - Flow Group 0002	3342	3807	3577.00
Trial: 1 / FS: 128 / Iter: 6	Ethernet - 009	Ethernet - 010	QT-Rfc2544Tput-Endpoint Set-1 - Flow Group 0001	3317	3720	3519.00
Trial: 1 / FS: 128 / Iter: 6	Ethernet - 010	Ethernet - 009	QT-Rfc2544Tput-Endpoint Set-1 - Flow Group 0002	3390	3807	3606.00
Trial: 1 / FS: 128 / Iter: 7	Ethernet - 009	Ethernet - 010	QT-Rfc2544Tput-Endpoint Set-1 - Flow Group 0001	3222	3720	3541.00
Trial: 1 / FS: 128 / Iter: 7	Ethernet - 010	Ethernet - 009	QT-Rfc2544Tput-Endpoint Set-1 - Flow Group 0002	3310	3792	3629.00
Trial: 1 / FS: 128 / Iter: 8	Ethernet - 009	Ethernet - 010	QT-Rfc2544Tput-Endpoint Set-1 - Flow Group 0001	3382	3720	3559.00
Trial: 1 / FS: 128 / Iter: 8	Ethernet - 010	Ethernet - 009	QT-Rfc2544Tput-Endpoint Set-1 - Flow Group 0002	3455	3792	3646.00
Trial: 1 / FS: 128 / Iter: 9	Ethernet - 009	Ethernet - 010	QT-Rfc2544Tput-Endpoint Set-1 - Flow Group 0001	3590	3720	3659.00
Trial: 1 / FS: 128 / Iter: 9	Ethernet - 010	Ethernet - 009	QT-Rfc2544Tput-Endpoint Set-1 - Flow Group 0002	3615	3792	3735.00
Trial: 1 / FS: 256 / Iter: 1	Ethernet - 009	Ethernet - 010	QT-Rfc2544Tput-Endpoint Set-1 - Flow Group 0001	3112	3687	3371.00
Trial: 1 / FS: 256 / Iter: 1	Ethernet - 010	Ethernet - 009	QT-Rfc2544Tput-Endpoint Set-1 - Flow Group 0002	3170	3760	3461.00
Trial: 1 / FS: 256 / Iter: 2	Ethernet - 009	Ethernet - 010	QT-Rfc2544Tput-Endpoint Set-1 - Flow Group 0001	3097	3690	3375.00
Trial: 1 / FS: 256 / Iter: 2	Ethernet - 010	Ethernet - 009	QT-Rfc2544Tput-Endpoint Set-1 - Flow Group 0002	3185	3762	3465.00

Trial: 1 / FS: 256 / Iter: 3	Ethernet - 009	Ethernet - 010	QT-Rfc2544Tput-Endpoint Set-1 - Flow Group 0001	3095	3690	3375.00
Trial: 1 / FS: 256 / Iter: 3	Ethernet - 010	Ethernet - 009	QT-Rfc2544Tput-Endpoint Set-1 - Flow Group 0002	3185	3762	3465.00
Trial: 1 / FS: 256 / Iter: 4	Ethernet - 009	Ethernet - 010	QT-Rfc2544Tput-Endpoint Set-1 - Flow Group 0001	3095	3690	3378.00
Trial: 1 / FS: 256 / Iter: 4	Ethernet - 010	Ethernet - 009	QT-Rfc2544Tput-Endpoint Set-1 - Flow Group 0002	3185	3775	3469.00
Trial: 1 / FS: 256 / Iter: 5	Ethernet - 009	Ethernet - 010	QT-Rfc2544Tput-Endpoint Set-1 - Flow Group 0001	3095	3690	3383.00
Trial: 1 / FS: 256 / Iter: 5	Ethernet - 010	Ethernet - 009	QT-Rfc2544Tput-Endpoint Set-1 - Flow Group 0002	3185	3762	3474.00
Trial: 1 / FS: 256 / Iter: 6	Ethernet - 009	Ethernet - 010	QT-Rfc2544Tput-Endpoint Set-1 - Flow Group 0001	3095	3690	3385.00
Trial: 1 / FS: 256 / Iter: 6	Ethernet - 010	Ethernet - 009	QT-Rfc2544Tput-Endpoint Set-1 - Flow Group 0002	3185	3762	3477.00
Trial: 1 / FS: 256 / Iter: 7	Ethernet - 009	Ethernet - 010	QT-Rfc2544Tput-Endpoint Set-1 - Flow Group 0001	3145	3690	3405.00
Trial: 1 / FS: 256 / Iter: 7	Ethernet - 010	Ethernet - 009	QT-Rfc2544Tput-Endpoint Set-1 - Flow Group 0002	3215	3762	3496.00
Trial: 1 / FS: 256 / Iter: 8	Ethernet - 009	Ethernet - 010	QT-Rfc2544Tput-Endpoint Set-1 - Flow Group 0001	3162	3690	3428.00
Trial: 1 / FS: 256 / Iter: 8	Ethernet - 010	Ethernet - 009	QT-Rfc2544Tput-Endpoint Set-1 - Flow Group 0002	3247	3762	3520.00
Trial: 1 / FS: 256 / Iter: 9	Ethernet - 009	Ethernet - 010	QT-Rfc2544Tput-Endpoint Set-1 - Flow Group 0001	3272	4682	3625.00
Trial: 1 / FS: 256 / Iter: 9	Ethernet - 010	Ethernet - 009	QT-Rfc2544Tput-Endpoint Set-1 - Flow Group 0002	3647	4755	3705.00
Trial: 1 / FS: 512 / Iter: 1	Ethernet - 009	Ethernet - 010	QT-Rfc2544Tput-Endpoint Set-1 - Flow Group 0001	3062	3637	3373.00
Trial: 1 / FS: 512 / Iter: 1	Ethernet - 010	Ethernet - 009	QT-Rfc2544Tput-Endpoint Set-1 - Flow Group 0002	3200	3775	3468.00
Trial: 1 / FS: 512 / Iter: 2	Ethernet - 009	Ethernet - 010	QT-Rfc2544Tput-Endpoint Set-1 - Flow Group 0001	3045	3640	3370.00
Trial: 1 / FS: 512 / Iter: 2	Ethernet - 010	Ethernet - 009	QT-Rfc2544Tput-Endpoint Set-1 - Flow Group 0002	3197	3775	3464.00
Trial: 1 / FS: 512 / Iter: 3	Ethernet - 009	Ethernet - 010	QT-Rfc2544Tput-Endpoint Set-1 - Flow Group 0001	3045	3640	3371.00
Trial: 1 / FS: 512 / Iter: 3	Ethernet - 010	Ethernet - 009	QT-Rfc2544Tput-Endpoint Set-1 - Flow Group 0002	3197	3775	3464.00
Trial: 1 / FS: 512 / Iter: 4	Ethernet - 009	Ethernet - 010	QT-Rfc2544Tput-Endpoint Set-1 - Flow Group 0001	3045	3640	3370.00

Trial: 1 / FS: 512 / Iter: 4	Ethernet - 010	Ethernet - 009	QT-Rfc2544Tput-Endpoint Set-1 - Flow Group 0002	3197	3775	3464.00
Trial: 1 / FS: 512 / Iter: 5	Ethernet - 009	Ethernet - 010	QT-Rfc2544Tput-Endpoint Set-1 - Flow Group 0001	3047	3640	3371.00
Trial: 1 / FS: 512 / Iter: 5	Ethernet - 010	Ethernet - 009	QT-Rfc2544Tput-Endpoint Set-1 - Flow Group 0002	3197	3775	3465.00
Trial: 1 / FS: 512 / Iter: 6	Ethernet - 009	Ethernet - 010	QT-Rfc2544Tput-Endpoint Set-1 - Flow Group 0001	3175	3640	3406.00
Trial: 1 / FS: 512 / Iter: 6	Ethernet - 010	Ethernet - 009	QT-Rfc2544Tput-Endpoint Set-1 - Flow Group 0002	3262	3775	3500.00
Trial: 1 / FS: 512 / Iter: 7	Ethernet - 009	Ethernet - 010	QT-Rfc2544Tput-Endpoint Set-1 - Flow Group 0001	3222	4357	3437.00
Trial: 1 / FS: 512 / Iter: 7	Ethernet - 010	Ethernet - 009	QT-Rfc2544Tput-Endpoint Set-1 - Flow Group 0002	3310	4480	3531.00
Trial: 1 / FS: 512 / Iter: 8	Ethernet - 009	Ethernet - 010	QT-Rfc2544Tput-Endpoint Set-1 - Flow Group 0001	3222	3640	3463.00
Trial: 1 / FS: 512 / Iter: 8	Ethernet - 010	Ethernet - 009	QT-Rfc2544Tput-Endpoint Set-1 - Flow Group 0002	3262	3775	3563.00
Trial: 1 / FS: 512 / Iter: 9	Ethernet - 009	Ethernet - 010	QT-Rfc2544Tput-Endpoint Set-1 - Flow Group 0001	3352	3640	3576.00
Trial: 1 / FS: 512 / Iter: 9	Ethernet - 010	Ethernet - 009	QT-Rfc2544Tput-Endpoint Set-1 - Flow Group 0002	3357	3792	3704.00
Trial: 1 / FS: 1024 / Iter: 1	Ethernet - 009	Ethernet - 010	QT-Rfc2544Tput-Endpoint Set-1 - Flow Group 0001	3080	3672	3385.00
Trial: 1 / FS: 1024 / Iter: 1	Ethernet - 010	Ethernet - 009	QT-Rfc2544Tput-Endpoint Set-1 - Flow Group 0002	3167	3745	3475.00
Trial: 1 / FS: 1024 / Iter: 2	Ethernet - 009	Ethernet - 010	QT-Rfc2544Tput-Endpoint Set-1 - Flow Group 0001	3080	3672	3382.00
Trial: 1 / FS: 1024 / Iter: 2	Ethernet - 010	Ethernet - 009	QT-Rfc2544Tput-Endpoint Set-1 - Flow Group 0002	3150	3745	3472.00
Trial: 1 / FS: 1024 / Iter: 3	Ethernet - 009	Ethernet - 010	QT-Rfc2544Tput-Endpoint Set-1 - Flow Group 0001	3080	3672	3382.00
Trial: 1 / FS: 1024 / Iter: 3	Ethernet - 010	Ethernet - 009	QT-Rfc2544Tput-Endpoint Set-1 - Flow Group 0002	3150	3745	3472.00
Trial: 1 / FS: 1024 / Iter: 4	Ethernet - 009	Ethernet - 010	QT-Rfc2544Tput-Endpoint Set-1 - Flow Group 0001	3080	3672	3382.00
Trial: 1 / FS: 1024 / Iter: 4	Ethernet - 010	Ethernet - 009	QT-Rfc2544Tput-Endpoint Set-1 - Flow Group 0002	3150	3745	3472.00
Trial: 1 / FS: 1024 / Iter: 5	Ethernet - 009	Ethernet - 010	QT-Rfc2544Tput-Endpoint Set-1 - Flow Group 0001	3080	3672	3382.00
Trial: 1 / FS: 1024 / Iter: 5	Ethernet - 010	Ethernet - 009	QT-Rfc2544Tput-Endpoint Set-1 - Flow Group 0002	3150	3745	3472.00

Trial: 1 / FS: 1024 / Iter: 6	Ethernet - 009	Ethernet - 010	QT-Rfc2544Tput-Endpoint Set-1 - Flow Group 0001	3080	3672	3383.00
Trial: 1 / FS: 1024 / Iter: 6	Ethernet - 010	Ethernet - 009	QT-Rfc2544Tput-Endpoint Set-1 - Flow Group 0002	3150	3745	3473.00
Trial: 1 / FS: 1024 / Iter: 7	Ethernet - 009	Ethernet - 010	QT-Rfc2544Tput-Endpoint Set-1 - Flow Group 0001	3177	3672	3418.00
Trial: 1 / FS: 1024 / Iter: 7	Ethernet - 010	Ethernet - 009	QT-Rfc2544Tput-Endpoint Set-1 - Flow Group 0002	3262	3745	3503.00
Trial: 1 / FS: 1024 / Iter: 8	Ethernet - 009	Ethernet - 010	QT-Rfc2544Tput-Endpoint Set-1 - Flow Group 0001	3175	3672	3457.00
Trial: 1 / FS: 1024 / Iter: 8	Ethernet - 010	Ethernet - 009	QT-Rfc2544Tput-Endpoint Set-1 - Flow Group 0002	3342	3745	3540.00
Trial: 1 / FS: 1024 / Iter: 9	Ethernet - 009	Ethernet - 010	QT-Rfc2544Tput-Endpoint Set-1 - Flow Group 0001	3352	4665	3596.00
Trial: 1 / FS: 1024 / Iter: 9	Ethernet - 010	Ethernet - 009	QT-Rfc2544Tput-Endpoint Set-1 - Flow Group 0002	3327	4720	3673.00
Trial: 1 / FS: 1280 / Iter: 1	Ethernet - 009	Ethernet - 010	QT-Rfc2544Tput-Endpoint Set-1 - Flow Group 0001	3097	3672	3370.00
Trial: 1 / FS: 1280 / Iter: 1	Ethernet - 010	Ethernet - 009	QT-Rfc2544Tput-Endpoint Set-1 - Flow Group 0002	3167	3742	3466.00
Trial: 1 / FS: 1280 / Iter: 2	Ethernet - 009	Ethernet - 010	QT-Rfc2544Tput-Endpoint Set-1 - Flow Group 0001	3080	3672	3373.00
Trial: 1 / FS: 1280 / Iter: 2	Ethernet - 010	Ethernet - 009	QT-Rfc2544Tput-Endpoint Set-1 - Flow Group 0002	3152	3745	3464.00
Trial: 1 / FS: 1280 / Iter: 3	Ethernet - 009	Ethernet - 010	QT-Rfc2544Tput-Endpoint Set-1 - Flow Group 0001	3080	3672	3373.00
Trial: 1 / FS: 1280 / Iter: 3	Ethernet - 010	Ethernet - 009	QT-Rfc2544Tput-Endpoint Set-1 - Flow Group 0002	3152	3745	3464.00
Trial: 1 / FS: 1280 / Iter: 4	Ethernet - 009	Ethernet - 010	QT-Rfc2544Tput-Endpoint Set-1 - Flow Group 0001	3080	3672	3373.00
Trial: 1 / FS: 1280 / Iter: 4	Ethernet - 010	Ethernet - 009	QT-Rfc2544Tput-Endpoint Set-1 - Flow Group 0002	3152	3745	3464.00
Trial: 1 / FS: 1280 / Iter: 5	Ethernet - 009	Ethernet - 010	QT-Rfc2544Tput-Endpoint Set-1 - Flow Group 0001	3080	3672	3373.00
Trial: 1 / FS: 1280 / Iter: 5	Ethernet - 010	Ethernet - 009	QT-Rfc2544Tput-Endpoint Set-1 - Flow Group 0002	3152	3745	3464.00
Trial: 1 / FS: 1280 / Iter: 6	Ethernet - 009	Ethernet - 010	QT-Rfc2544Tput-Endpoint Set-1 - Flow Group 0001	3080	3672	3376.00
Trial: 1 / FS: 1280 / Iter: 6	Ethernet - 010	Ethernet - 009	QT-Rfc2544Tput-Endpoint Set-1 - Flow Group 0002	3152	3745	3467.00
Trial: 1 / FS: 1280 / Iter: 7	Ethernet - 009	Ethernet - 010	QT-Rfc2544Tput-Endpoint Set-1 - Flow Group 0001	3127	4217	3398.00



Trial: 1 / FS: 1280 / Iter: 7	Ethernet - 010	Ethernet - 009	QT-Rfc2544Tput-Endpoint Set-1 - Flow Group 0002	3215	4367	3489.00
Trial: 1 / FS: 1280 / Iter: 8	Ethernet - 009	Ethernet - 010	QT-Rfc2544Tput-Endpoint Set-1 - Flow Group 0001	3177	3672	3425.00
Trial: 1 / FS: 1280 / Iter: 8	Ethernet - 010	Ethernet - 009	QT-Rfc2544Tput-Endpoint Set-1 - Flow Group 0002	3262	3745	3516.00
Trial: 1 / FS: 1280 / Iter: 9	Ethernet - 009	Ethernet - 010	QT-Rfc2544Tput-Endpoint Set-1 - Flow Group 0001	3287	3672	3573.00
Trial: 1 / FS: 1280 / Iter: 9	Ethernet - 010	Ethernet - 009	QT-Rfc2544Tput-Endpoint Set-1 - Flow Group 0002	3552	3745	3651.00
Trial: 1 / FS: 1518 / Iter: 1	Ethernet - 009	Ethernet - 010	QT-Rfc2544Tput-Endpoint Set-1 - Flow Group 0001	3270	3865	3564.00
Trial: 1 / FS: 1518 / Iter: 1	Ethernet - 010	Ethernet - 009	QT-Rfc2544Tput-Endpoint Set-1 - Flow Group 0002	3360	3937	3655.00
Trial: 1 / FS: 1518 / Iter: 2	Ethernet - 009	Ethernet - 010	QT-Rfc2544Tput-Endpoint Set-1 - Flow Group 0001	3272	3865	3568.00
Trial: 1 / FS: 1518 / Iter: 2	Ethernet - 010	Ethernet - 009	QT-Rfc2544Tput-Endpoint Set-1 - Flow Group 0002	3345	3952	3658.00
Trial: 1 / FS: 1518 / Iter: 3	Ethernet - 009	Ethernet - 010	QT-Rfc2544Tput-Endpoint Set-1 - Flow Group 0001	3270	3865	3568.00
Trial: 1 / FS: 1518 / Iter: 3	Ethernet - 010	Ethernet - 009	QT-Rfc2544Tput-Endpoint Set-1 - Flow Group 0002	3345	3952	3658.00
Trial: 1 / FS: 1518 / Iter: 4	Ethernet - 009	Ethernet - 010	QT-Rfc2544Tput-Endpoint Set-1 - Flow Group 0001	3272	3865	3568.00
Trial: 1 / FS: 1518 / Iter: 4	Ethernet - 010	Ethernet - 009	QT-Rfc2544Tput-Endpoint Set-1 - Flow Group 0002	3342	3952	3658.00
Trial: 1 / FS: 1518 / Iter: 5	Ethernet - 009	Ethernet - 010	QT-Rfc2544Tput-Endpoint Set-1 - Flow Group 0001	3270	3865	3568.00
Trial: 1 / FS: 1518 / Iter: 5	Ethernet - 010	Ethernet - 009	QT-Rfc2544Tput-Endpoint Set-1 - Flow Group 0002	3345	3952	3658.00
Trial: 1 / FS: 1518 / Iter: 6	Ethernet - 009	Ethernet - 010	QT-Rfc2544Tput-Endpoint Set-1 - Flow Group 0001	3287	3865	3570.00
Trial: 1 / FS: 1518 / Iter: 6	Ethernet - 010	Ethernet - 009	QT-Rfc2544Tput-Endpoint Set-1 - Flow Group 0002	3360	3952	3660.00
Trial: 1 / FS: 1518 / Iter: 7	Ethernet - 009	Ethernet - 010	QT-Rfc2544Tput-Endpoint Set-1 - Flow Group 0001	3320	3865	3595.00
Trial: 1 / FS: 1518 / Iter: 7	Ethernet - 010	Ethernet - 009	QT-Rfc2544Tput-Endpoint Set-1 - Flow Group 0002	3470	3952	3685.00
Trial: 1 / FS: 1518 / Iter: 8	Ethernet - 009	Ethernet - 010	QT-Rfc2544Tput-Endpoint Set-1 - Flow Group 0001	3382	4505	3622.00
Trial: 1 / FS: 1518 / Iter: 8	Ethernet - 010	Ethernet - 009	QT-Rfc2544Tput-Endpoint Set-1 - Flow Group 0002	3472	4575	3712.00

---

Trial: 1 / FS: 1518 / Iter: 9	Ethernet - 009	Ethernet - 010	QT-Rfc2544Tput-Endpoint Set-1 - Flow Group 0001	3607	3865	3779.00
Trial: 1 / FS: 1518 / Iter: 9	Ethernet - 010	Ethernet - 009	QT-Rfc2544Tput-Endpoint Set-1 - Flow Group 0002	3582	3952	3863.00

**Theoretical maximum Frame Rates (frames/second) for different frame sizes (bytes)**

Speed	64	128	256	512	1024	1280	1518
10 Mbps	14881	8446	4529	2350	1198	962	813
100 Mbps	148810	84460	45290	23497	11973	9616	8128
1000 Mbps	1488096	844595	452899	234963	119732	96154	81275
10 Gbps	14880952	8445946	4528986	2349625	1197318	961539	812744
25 Gbps	37202380	21114864	11322463	5874060	2993295	2403846	2031859
40 Gbps	59523809	33783783	18115942	9398496	4789272	3846153	3250975
100 Gbps	148809523	84459459	45289855	23496240	11973180	9615384	8127438
155 Mbps (Oc - 3)	288000	145116	72840	36491	18263	14614	12324
622 Mbps (Oc - 12)	1152000	580465	291362	145965	73054	58454	49296
2488 Mbps (Oc - 48)	4608000	2321860	1165447	583860	292215	233817	197182
9952 Mbps (Oc - 192)	18432000	9287442	4661790	2335439	1168859	935270	788730