



IxNetwork Report

Test: RFC2544 - Throughput/Latency

Test Date: 11/20/2020 10:21:58

www.ixiacom.com
www.ixiacom.com/support

Table of Contents

1.	Cover	1
2.	Info	3
3.	Port Map	4
4.	Aggregate Graphs	5
5.	IterationCharts	13
6.	Aggregated Results	19
7.	Aggregated Results Per Iteration	20
8.	Per Flow Results	25
9.	Iteration Data	27
10.	Theoretical Max Rates	43

RFC2544 - Throughput/Latency - Info**Test Information****Product Information**

Product Label :	FS Switch N8550-48B8C
Product Version :	Compiled Nov 15 2020 10:00:06
Serial Number :	732656X2007017
Comments :	

Test Settings

Date Executed :	11/20/2020
Time Executed :	10:21:58
User Name :	
Number of Trials Executed :	1
Stream Duration (sec) :	20

Output Parameters

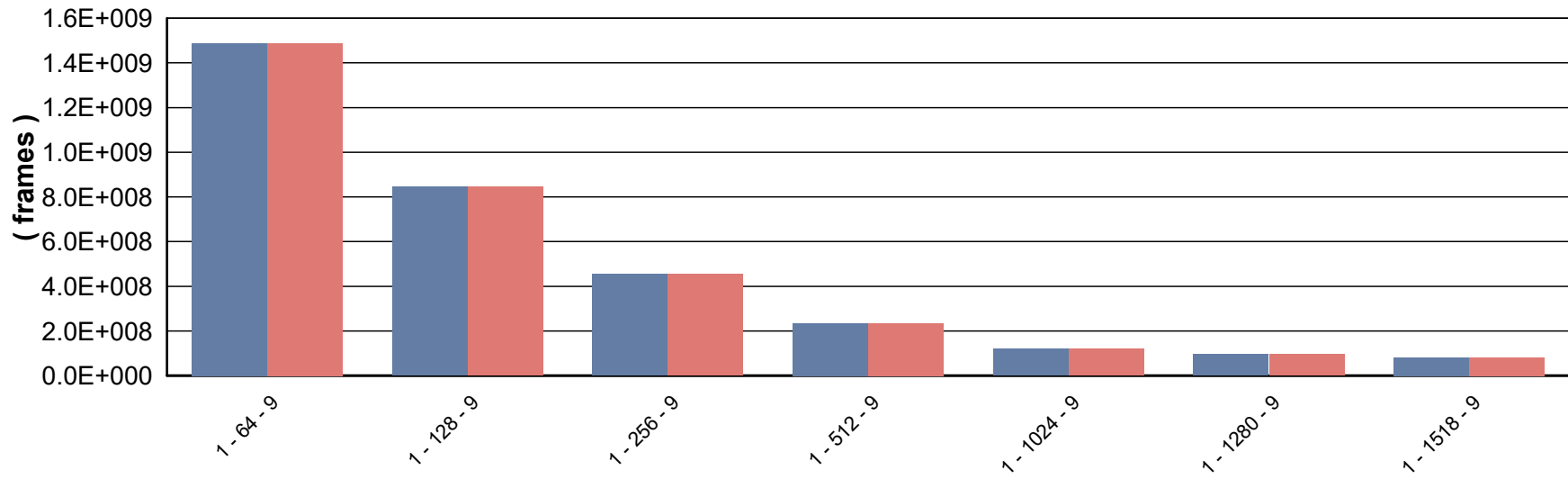
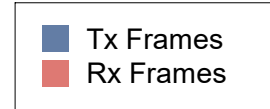
Number of Trials Passed :	N/A
Test Duration :	00:34:11

RFC2544 - Throughput/Latency - Port Map Information

Port Map :	Tx Port	Tx Speed (Mbps)	Rx Port	Rx Speed (Mbps)
	10.32.133.101:6:23	25000	10.32.133.101:6:26	25000
	10.32.133.101:6:26	25000	10.32.133.101:6:23	25000

RFC2544 - Throughput/Latency - Aggregated Graph

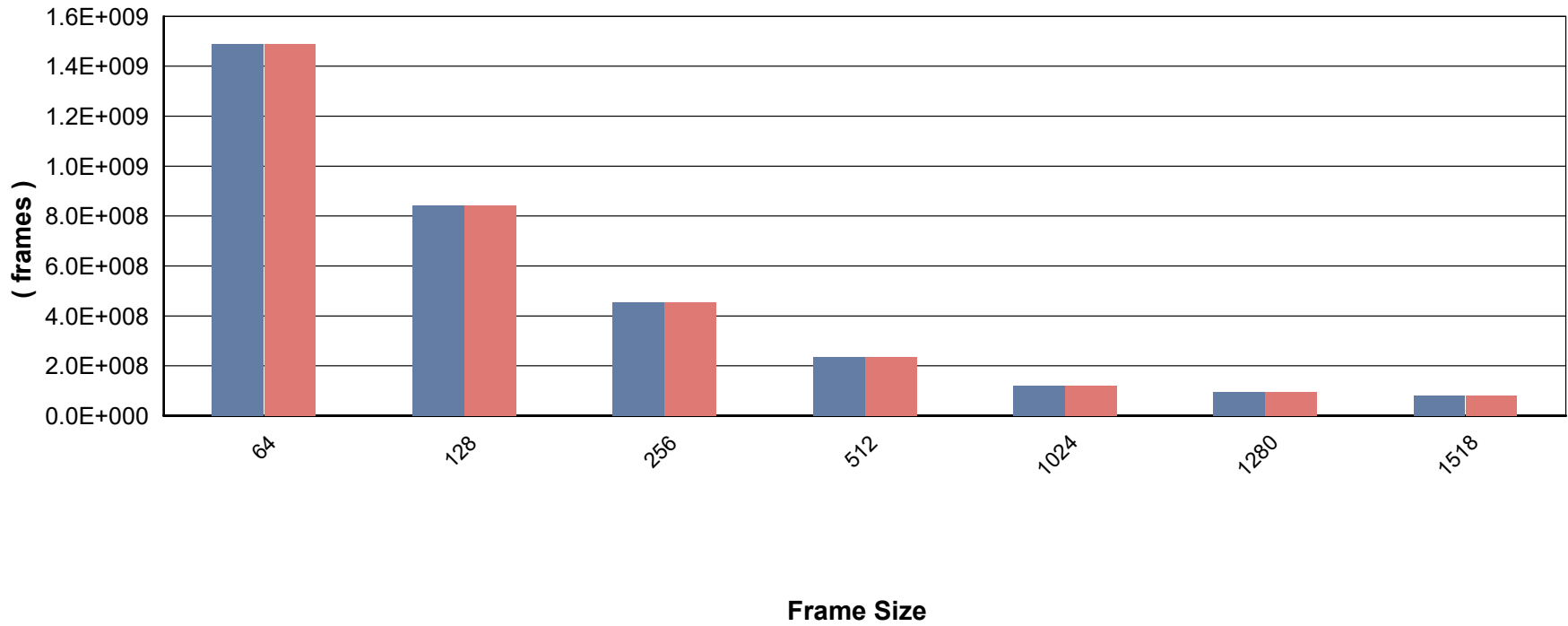
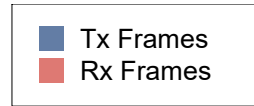
Total Frames Transmitted and Received



Trial - Framesize - Iteration

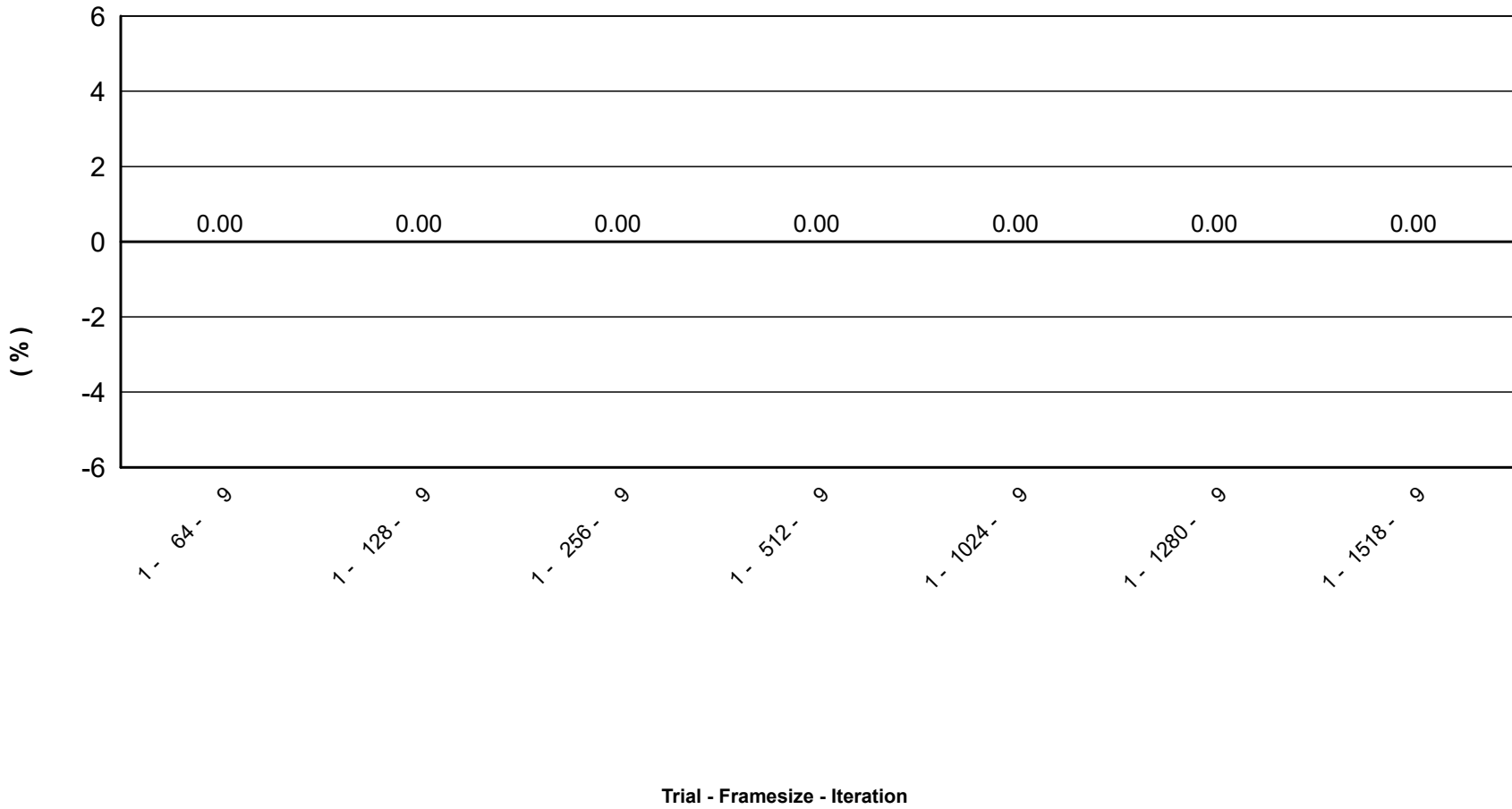
RFC2544 - Throughput/Latency - Aggregated Graph

Tx / Rx Frames per Frame Size



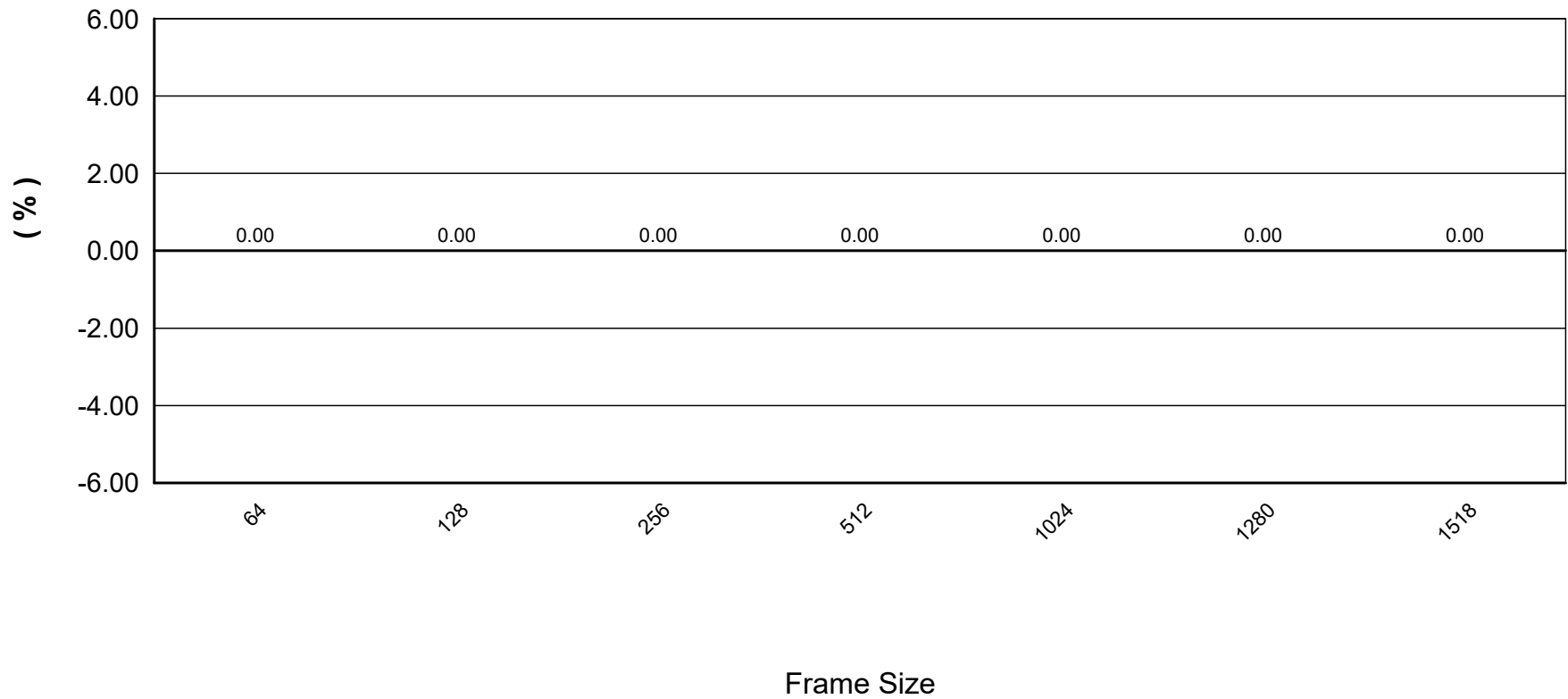
RFC2544 - Throughput/Latency - Aggregated Graph

Aggregated Frame Loss



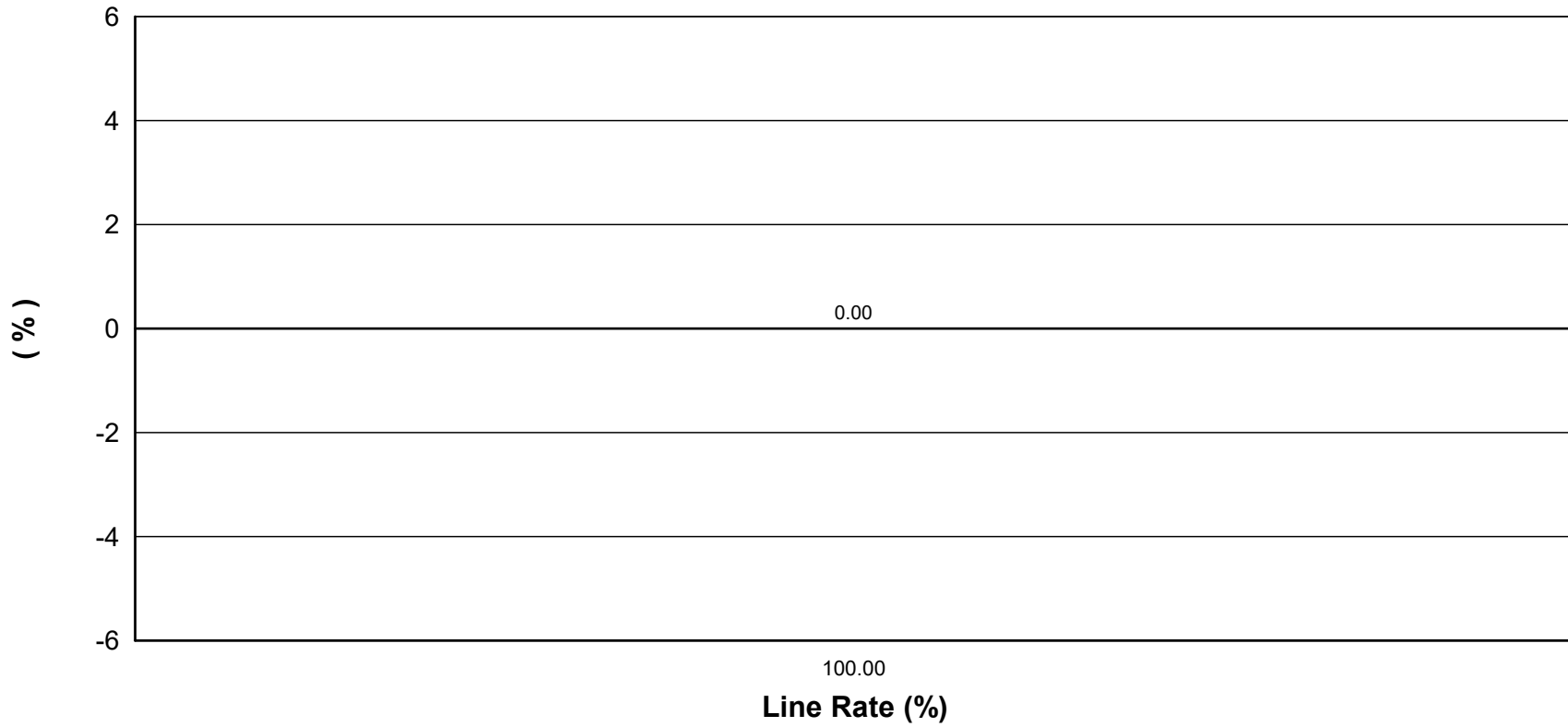
RFC2544 - Throughput/Latency - Aggregated Graph

Aggregated Frame Loss per Frame Size



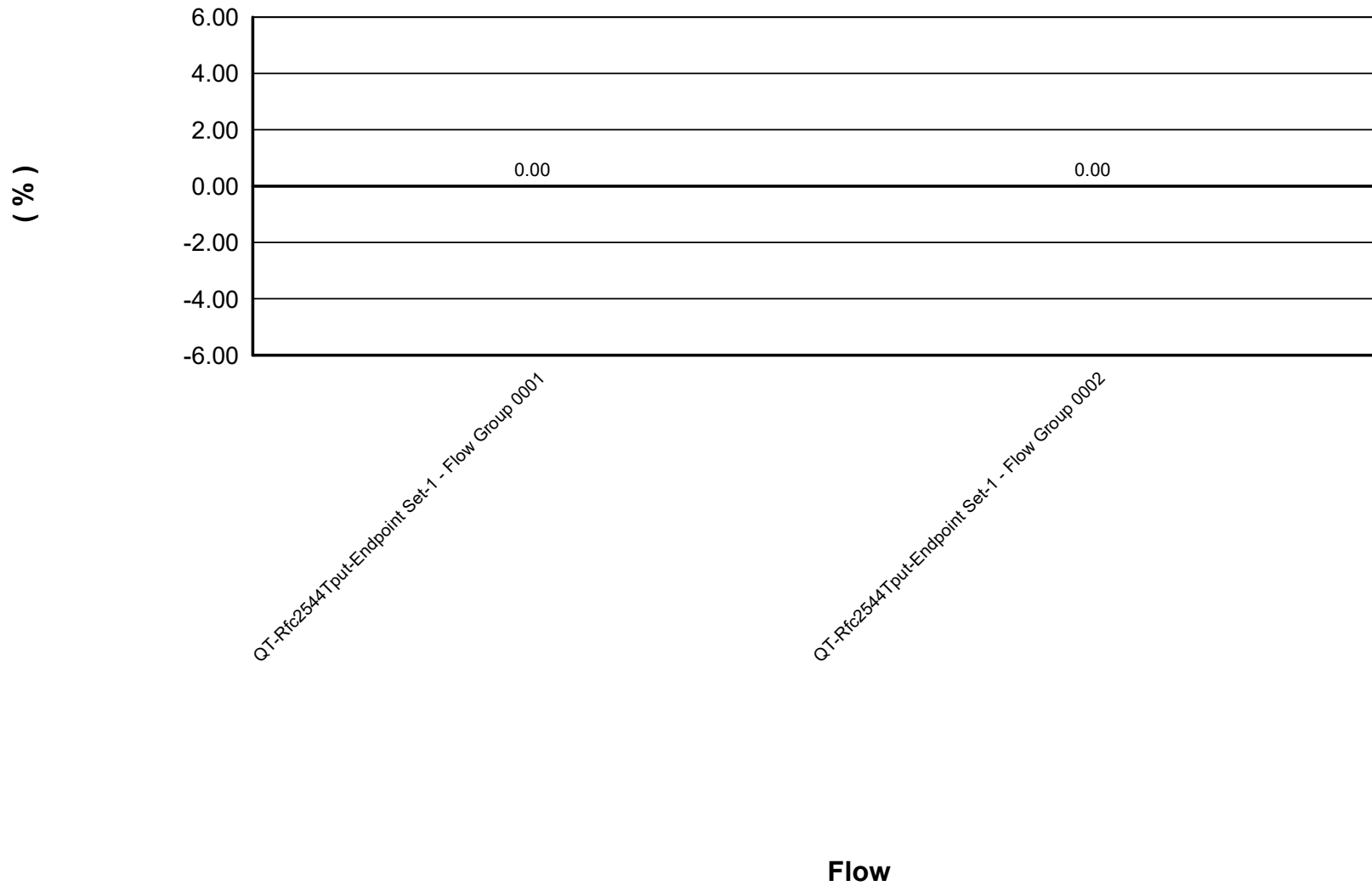
RFC2544 - Throughput/Latency - Aggregated Graph

Aggregated Frame Loss per Line Rate



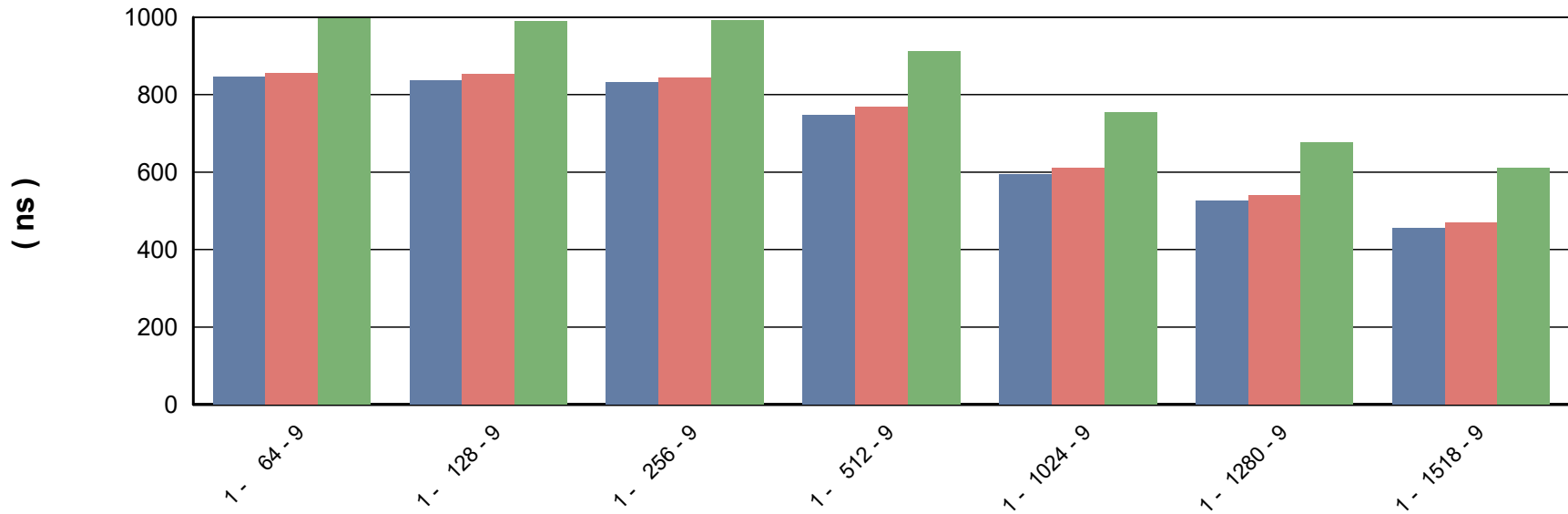
RFC2544 - Throughput/Latency - Per Flow Graph

Average Frame Loss per Flow



RFC2544 - Throughput/Latency - Aggregated Graph

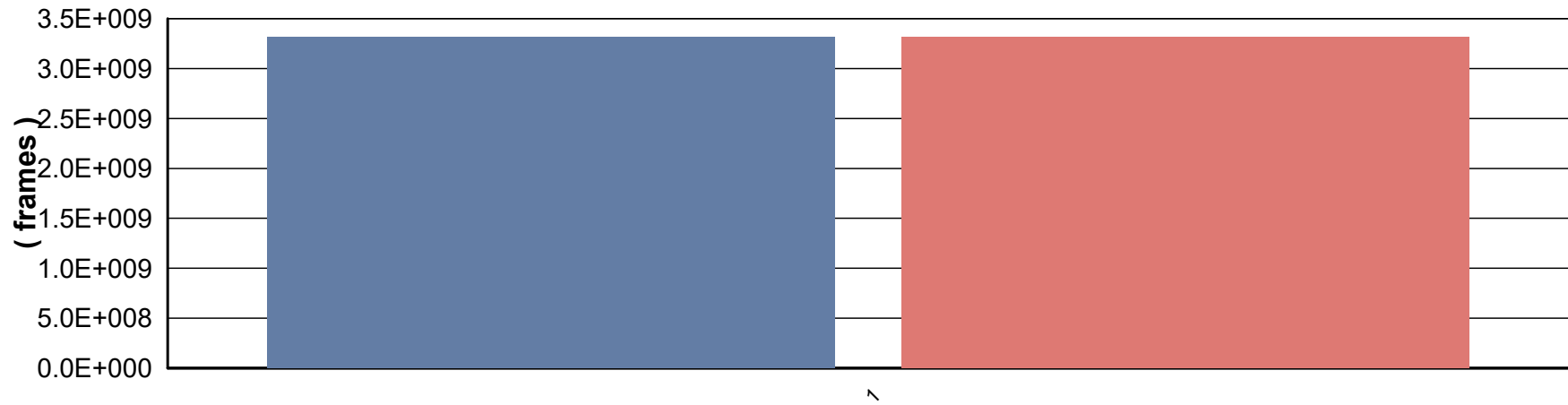
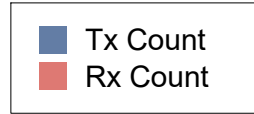
Aggregated Latency



Trial - Framesize - Iteration

RFC2544 - Throughput/Latency - Per Flow Graph

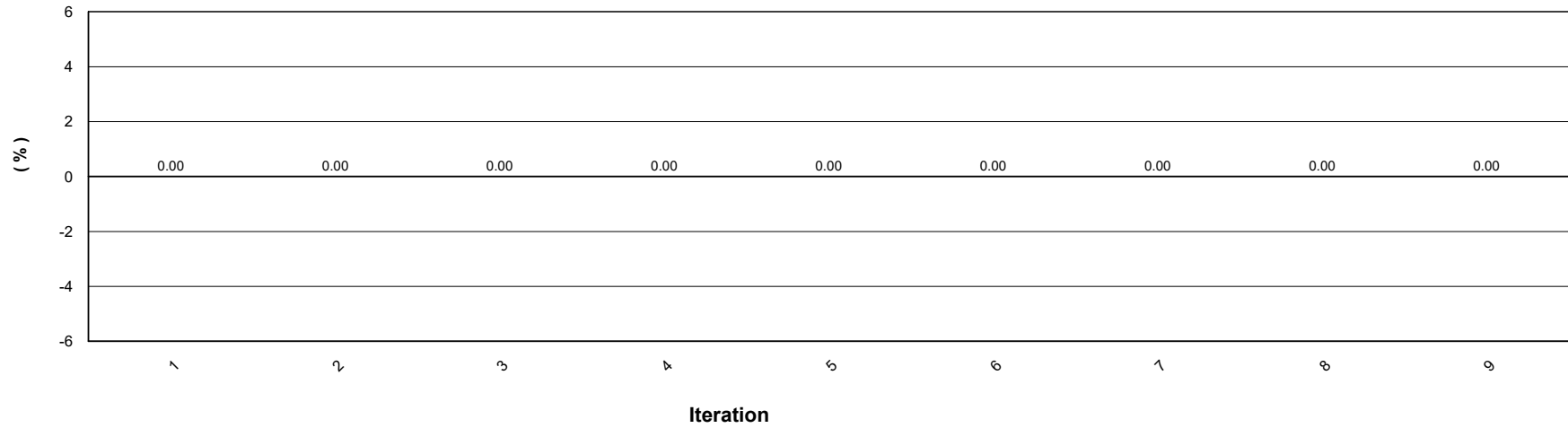
Tx / Rx Frame Count



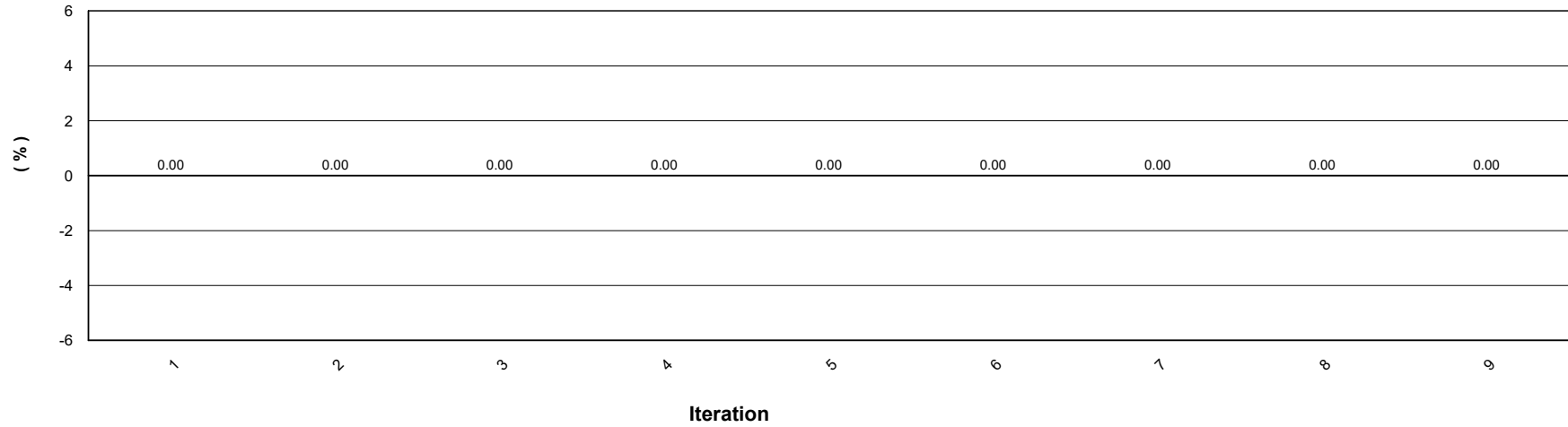
Trial

RFC2544 - Throughput/Latency - Iteration Graph

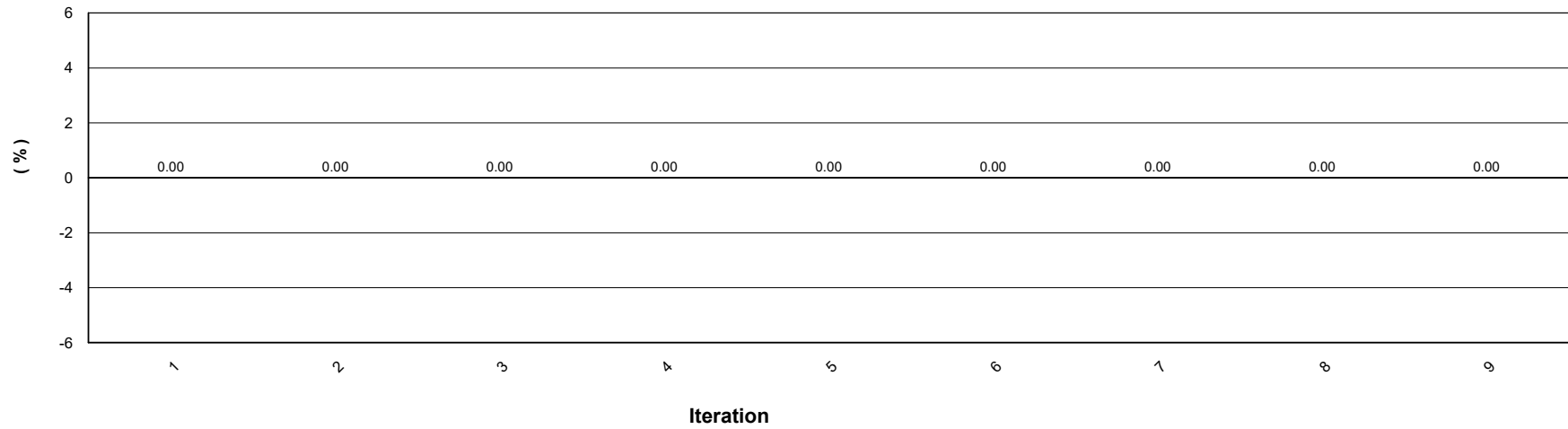
Aggregated Frame Loss for Trial 1 and Framesize 64



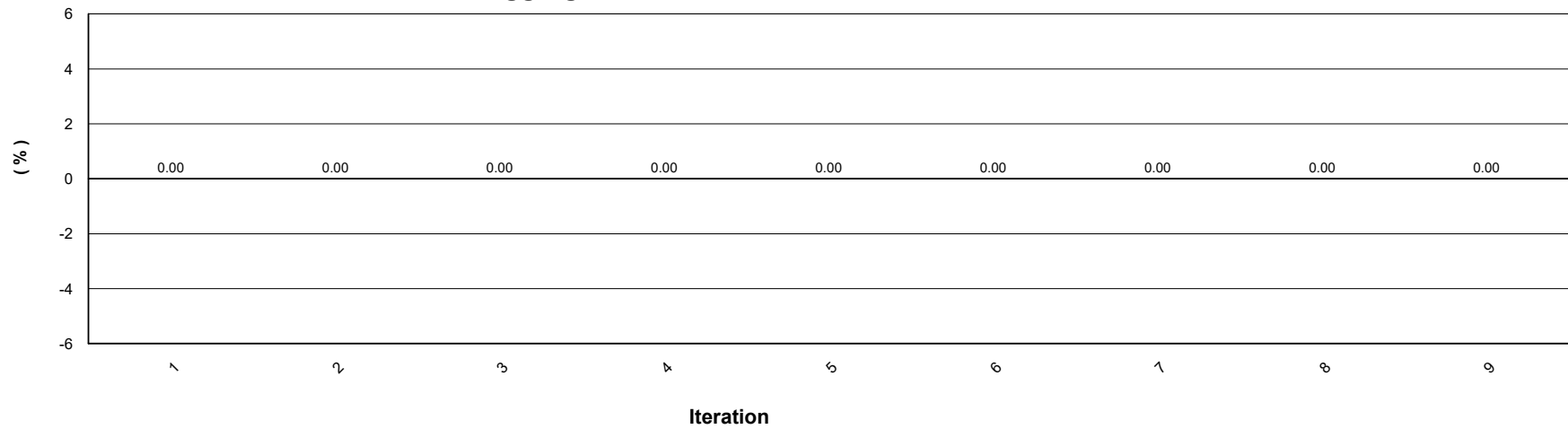
Aggregated Frame Loss for Trial 1 and Framesize 128



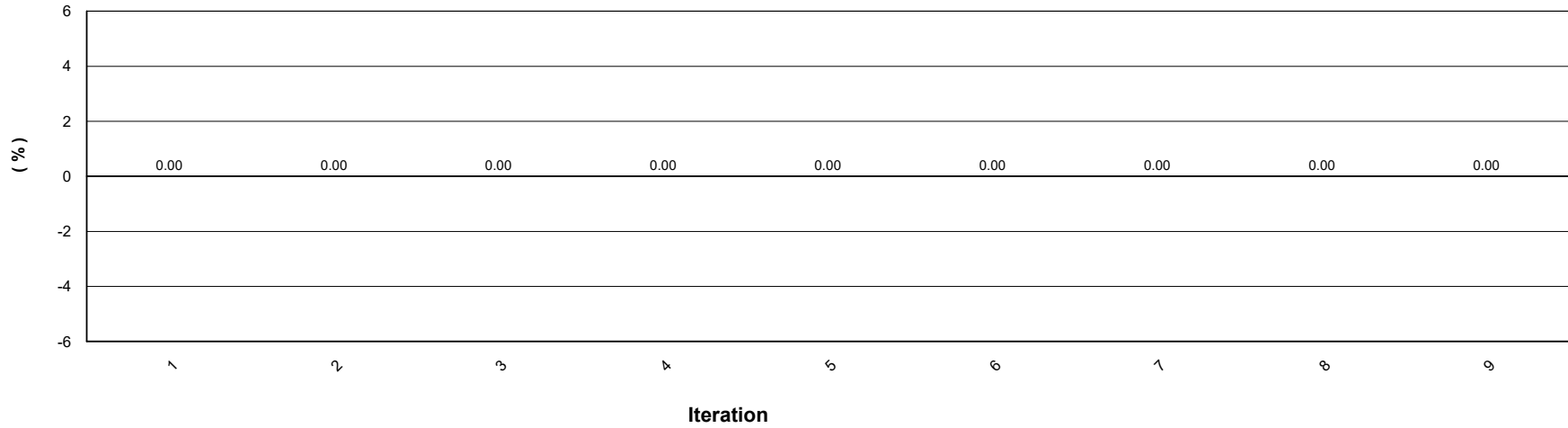
Aggregated Frame Loss for Trial 1 and Framesize 256



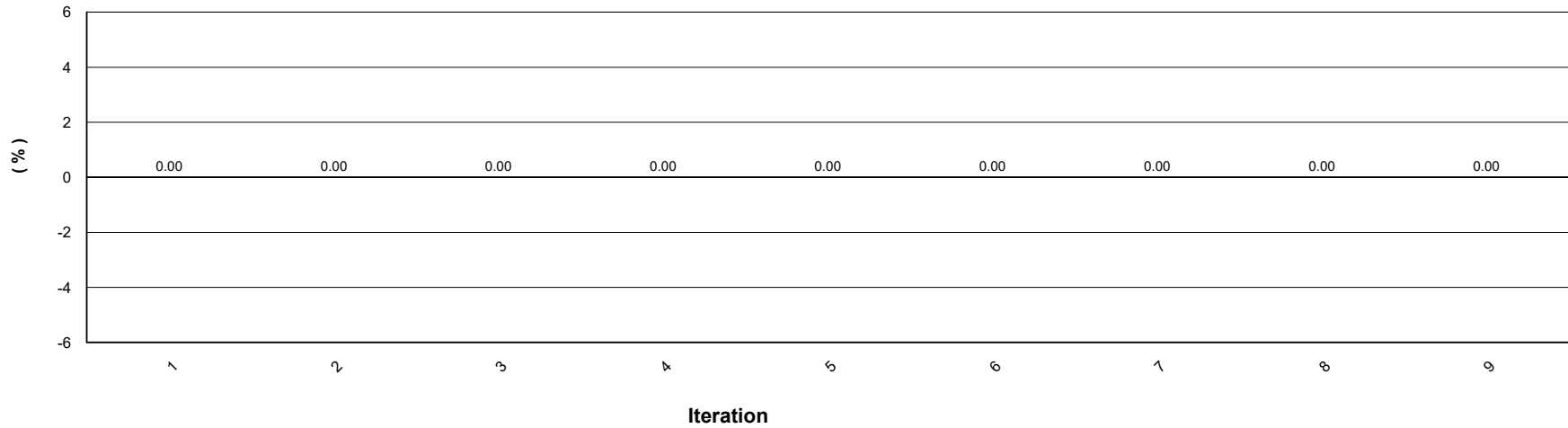
Aggregated Frame Loss for Trial 1 and Framesize 512



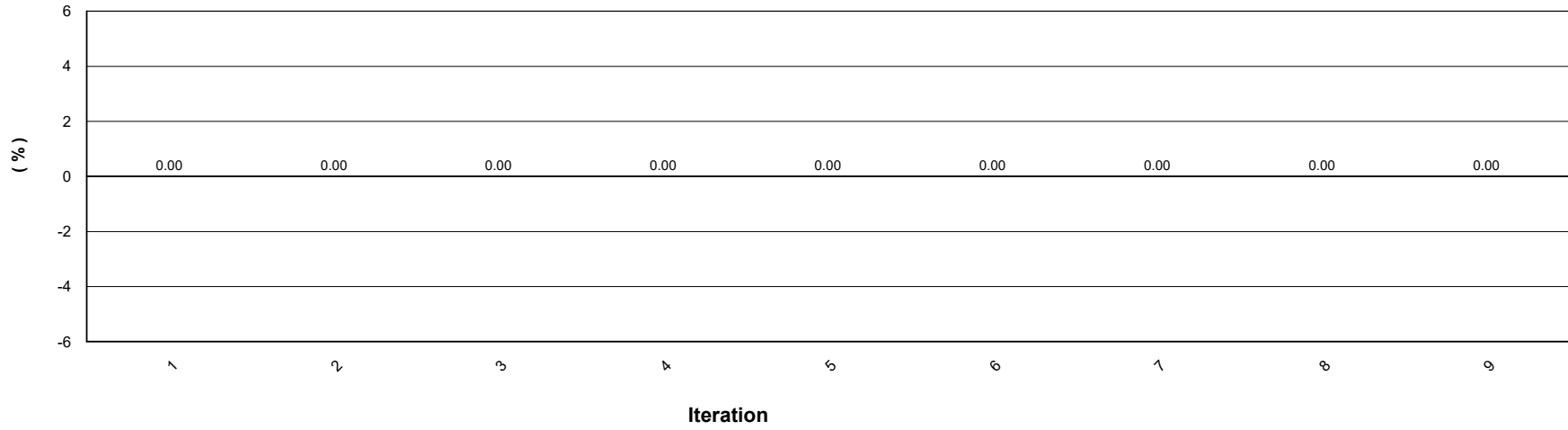
Aggregated Frame Loss for Trial 1 and Framesize 1024



Aggregated Frame Loss for Trial 1 and Framesize 1280

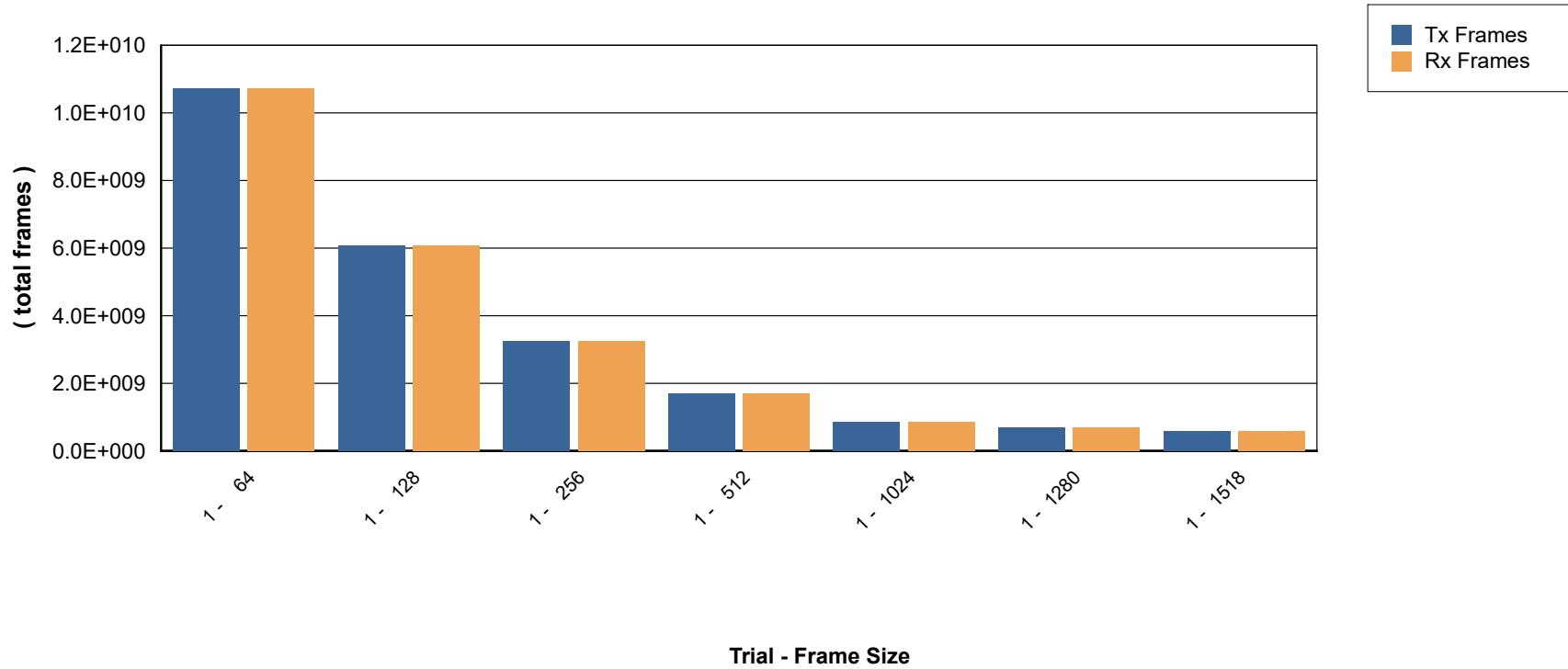


Aggregated Frame Loss for Trial 1 and Framesize 1518

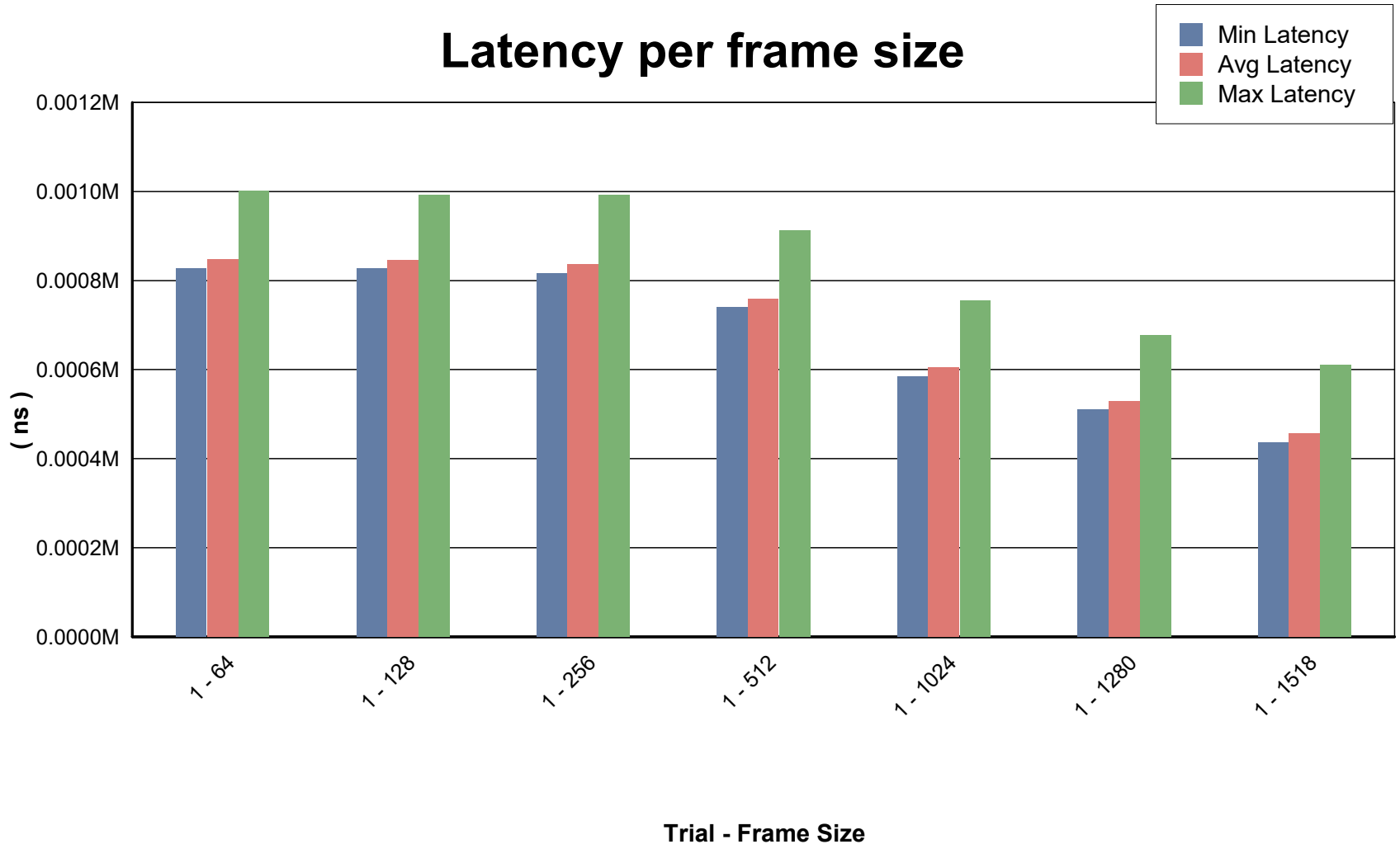


RFC2544 - Throughput/Latency - Iteration Graph

Tx / Rx Frames per Frame Size



RFC2544 - Throughput/Latency - Iteration Graph



RFC2544 - Throughput/Latency - Aggregated Results

Trial / Framesize / Iteration	Agg L2 Throughput				Agg L1 Throughput		Throughput (frames)	Agg Latency		
	Agg Tx Rate %	Agg Rx Rate			Tx Rate Mbps	Rx Rate Mbps		Min (ns)	Max (ns)	Average (ns)
		%	FPS	Mbps						
Trial: 1 / FS: 64 / Iter: 9	100.00	100	74404761.9	38095.238			Tx : 1488095238.000 Rx : 1488095238.000 Loss : 0 Loss% : 0.00	847	997	856.000
Trial: 1 / FS: 128 / Iter: 9	100.00	100	42229729.7	43243.243			Tx : 844594594.000 Rx : 844594594.000 Loss : 0 Loss% : 0.00	837	990	853.500
Trial: 1 / FS: 256 / Iter: 9	100.00	100	22644927.5	46376.812			Tx : 452898550.000 Rx : 452898550.000 Loss : 0 Loss% : 0.00	832	992	844.000
Trial: 1 / FS: 512 / Iter: 9	100.00	100	11748120.3	48120.301			Tx : 234962406.000 Rx : 234962406.000 Loss : 0 Loss% : 0.00	747	912	769.000
Trial: 1 / FS: 1024 / Iter: 9	100.00	100	5986590.0	49042.146			Tx : 119731800.000 Rx : 119731800.000 Loss : 0 Loss% : 0.00	595	755	611.000
Trial: 1 / FS: 1280 / Iter: 9	100.00	100	4807692.3	49230.769			Tx : 96153846.000 Rx : 96153846.000 Loss : 0 Loss% : 0.00	525	677	539.000
Trial: 1 / FS: 1518 / Iter: 9	100.00	100	4063719.1	49349.805			Tx : 81274382.000 Rx : 81274382.000 Loss : 0 Loss% : 0.00	455	610	468.500

RFC2544 - Throughput/Latency - Aggregated Results

Trial / Framesize / Iteration	Agg L2 Throughput				Agg L1 Throughput		Throughput (frames)	Agg Latency		
	Agg Tx Rate %	Agg Rx Rate			Tx Rate Mbps	Rx Rate Mbps		Min (ns)	Max (ns)	Average (ns)
		%	FPS	Mbps						
Trial: 1 / FS: 64 / Iter: 1	10	10	7440476.2	3809.524			Tx : 148809524.000 Rx : 148809524.000 Loss : 0 Loss% : 0.00	827	860	844.000
Trial: 1 / FS: 64 / Iter: 2	55	55	40922613.1	20952.378			Tx : 818452380.000 Rx : 818452380.000 Loss : 0 Loss% : 0.00	827	967	844.000
Trial: 1 / FS: 64 / Iter: 3	78	78	57663631.8	29523.779			Tx : 1153273810.000 Rx : 1153273810.000 Loss : 0 Loss% : 0.00	827	992	844.000
Trial: 1 / FS: 64 / Iter: 4	89	89	66034183.0	33809.502			Tx : 1320684524.000 Rx : 1320684524.000 Loss : 0 Loss% : 0.00	827	987	844.500
Trial: 1 / FS: 64 / Iter: 5	94	94	70219518.3	35952.393			Tx : 1404389880.000 Rx : 1404389880.000 Loss : 0 Loss% : 0.00	830	992	846.000
Trial: 1 / FS: 64 / Iter: 6	97	97	72312094.5	37023.792			Tx : 1446242560.000 Rx : 1446242560.000 Loss : 0 Loss% : 0.00	832	1002	847.000
Trial: 1 / FS: 64 / Iter: 7	99	99	73358531.2	37559.568			Tx : 1467168898.000 Rx : 1467168898.000 Loss : 0 Loss% : 0.00	835	1000	848.000
Trial: 1 / FS: 64 / Iter: 8	99	99	73881673.8	37827.417			Tx : 1477632068.000 Rx : 1477632068.000 Loss : 0 Loss% : 0.00	837	992	849.000
Trial: 1 / FS: 64 / Iter: 9	100	100	74404761.9	38095.238			Tx : 1488095238.000 Rx : 1488095238.000 Loss : 0 Loss% : 0.00	847	997	856.000
Trial: 1 / FS: 128 / Iter: 1	10	10	4222973.0	4324.324			Tx : 84459460.000 Rx : 84459460.000 Loss : 0 Loss% : 0.00	830	897	842.500
Trial: 1 / FS: 128 / Iter: 2	55	55	23226359.0	23783.792			Tx : 464527028.000 Rx : 464527028.000 Loss : 0 Loss% : 0.00	827	985	843.000
Trial: 1 / FS: 128 / Iter: 3	78	78	32728035.1	33513.508			Tx : 654560810.000 Rx : 654560810.000 Loss : 0 Loss% : 0.00	827	977	843.000
Trial: 1 / FS: 128 / Iter: 4	89	89	37478899.8	38378.393			Tx : 749577702.000 Rx : 749577702.000 Loss : 0 Loss% : 0.00	830	972	843.500

Trial: 1 / FS: 128 / Iter: 5	94	94	39854282.8	40810.786	Tx : 797086148.000	830	977	844.500
					Rx : 797086148.000			
					Loss : 0			
					Loss% : 0.00			
Trial: 1 / FS: 128 / Iter: 6	97	97	41042018.4	42027.027	Tx : 820840372.000	830	987	845.000
					Rx : 820840372.000			
					Loss : 0			
					Loss% : 0.00			
Trial: 1 / FS: 128 / Iter: 7	99	99	41635900.5	42635.162	Tx : 832717484.000	832	990	847.000
					Rx : 832717484.000			
					Loss : 0			
					Loss% : 0.00			
Trial: 1 / FS: 128 / Iter: 8	99	99	41932773.2	42939.160	Tx : 838656038.000	835	992	847.500
					Rx : 838656038.000			
					Loss : 0			
					Loss% : 0.00			
Trial: 1 / FS: 128 / Iter: 9	100	100	42229729.7	43243.243	Tx : 844594594.000	837	990	853.500
					Rx : 844594594.000			
					Loss : 0			
					Loss% : 0.00			
Trial: 1 / FS: 256 / Iter: 1	10	10	2264492.8	4637.681	Tx : 45289856.000	817	852	834.500
					Rx : 45289856.000			
					Loss : 0			
					Loss% : 0.00			
Trial: 1 / FS: 256 / Iter: 2	55	55	12454711.8	25507.250	Tx : 249094202.000	817	960	834.500
					Rx : 249094202.000			
					Loss : 0			
					Loss% : 0.00			
Trial: 1 / FS: 256 / Iter: 3	78	78	17549813.0	35942.017	Tx : 350996376.000	817	942	833.500
					Rx : 350996376.000			
					Loss : 0			
					Loss% : 0.00			
Trial: 1 / FS: 256 / Iter: 4	89	89	20097378.1	41159.430	Tx : 401947464.000	817	972	833.500
					Rx : 401947464.000			
					Loss : 0			
					Loss% : 0.00			
Trial: 1 / FS: 256 / Iter: 5	94	94	21371142.4	43768.100	Tx : 427423008.000	817	975	834.000
					Rx : 427423008.000			
					Loss : 0			
					Loss% : 0.00			
Trial: 1 / FS: 256 / Iter: 6	97	97	22008045.0	45072.476	Tx : 440160778.000	820	977	835.000
					Rx : 440160778.000			
					Loss : 0			
					Loss% : 0.00			
Trial: 1 / FS: 256 / Iter: 7	99	99	22326490.0	45724.652	Tx : 446529664.000	822	982	837.000
					Rx : 446529664.000			
					Loss : 0			
					Loss% : 0.00			
Trial: 1 / FS: 256 / Iter: 8	99	99	22485707.1	46050.728	Tx : 449714108.000	822	987	838.500
					Rx : 449714108.000			
					Loss : 0			
					Loss% : 0.00			
Trial: 1 / FS: 256 / Iter: 9	100	100	22644927.5	46376.812	Tx : 452898550.000	832	992	844.000
					Rx : 452898550.000			
					Loss : 0			
					Loss% : 0.00			
Trial: 1 / FS: 512 / Iter: 1	10	10	1174812.0	4812.030	Tx : 23496240.000	742	775	757.500
					Rx : 23496240.000			
					Loss : 0			
					Loss% : 0.00			

Trial: 1 / FS: 512 / Iter: 2	55	55	6461466.3	26466.166	Tx : 129229324.000	742	895	756.500
					Rx : 129229324.000			
					Loss : 0			
					Loss% : 0.00			
Trial: 1 / FS: 512 / Iter: 3	78	78	9104792.6	37293.231	Tx : 182095864.000	742	847	757.500
					Rx : 182095864.000			
					Loss : 0			
					Loss% : 0.00			
Trial: 1 / FS: 512 / Iter: 4	89	89	10426458.4	42706.774	Tx : 208529136.000	740	875	757.500
					Rx : 208529136.000			
					Loss : 0			
					Loss% : 0.00			
Trial: 1 / FS: 512 / Iter: 5	94	94	11087290.8	45413.543	Tx : 221745770.000	740	887	757.500
					Rx : 221745770.000			
					Loss : 0			
					Loss% : 0.00			
Trial: 1 / FS: 512 / Iter: 6	97	97	11417704.2	46766.916	Tx : 228354088.000	742	895	757.500
					Rx : 228354088.000			
					Loss : 0			
					Loss% : 0.00			
Trial: 1 / FS: 512 / Iter: 7	99	99	11582913.8	47443.615	Tx : 231658248.000	745	900	759.000
					Rx : 231658248.000			
					Loss : 0			
					Loss% : 0.00			
Trial: 1 / FS: 512 / Iter: 8	99	99	11665516.8	47781.957	Tx : 233310326.000	745	905	759.500
					Rx : 233310326.000			
					Loss : 0			
					Loss% : 0.00			
Trial: 1 / FS: 512 / Iter: 9	100	100	11748120.3	48120.301	Tx : 234962406.000	747	912	769.000
					Rx : 234962406.000			
					Loss : 0			
					Loss% : 0.00			
Trial: 1 / FS: 1024 / Iter: 1	10	10	598659.0	4904.215	Tx : 11973180.000	585	622	603.000
					Rx : 11973180.000			
					Loss : 0			
					Loss% : 0.00			
Trial: 1 / FS: 1024 / Iter: 2	55	55	3292624.4	26973.179	Tx : 65852490.000	590	687	602.000
					Rx : 65852490.000			
					Loss : 0			
					Loss% : 0.00			
Trial: 1 / FS: 1024 / Iter: 3	78	78	4639607.6	38007.666	Tx : 92792146.000	590	645	602.000
					Rx : 92792146.000			
					Loss : 0			
					Loss% : 0.00			
Trial: 1 / FS: 1024 / Iter: 4	89	89	5313098.2	43524.900	Tx : 106261974.000	585	700	603.000
					Rx : 106261974.000			
					Loss : 0			
					Loss% : 0.00			
Trial: 1 / FS: 1024 / Iter: 5	94	94	5649844.7	46283.528	Tx : 112996886.000	590	727	602.000
					Rx : 112996886.000			
					Loss : 0			
					Loss% : 0.00			
Trial: 1 / FS: 1024 / Iter: 6	97	97	5818217.5	47662.838	Tx : 116364344.000	585	725	603.500
					Rx : 116364344.000			
					Loss : 0			
					Loss% : 0.00			
Trial: 1 / FS: 1024 / Iter: 7	99	99	5902403.8	48352.492	Tx : 118048072.000	590	740	603.000
					Rx : 118048072.000			
					Loss : 0			
					Loss% : 0.00			

Trial: 1 / FS: 1024 / Iter: 8	99	99	5944497.0	48697.319	Tx : 118889936.000	587	737	605.000
					Rx : 118889936.000			
					Loss : 0			
					Loss% : 0.00			
Trial: 1 / FS: 1024 / Iter: 9	100	100	5986590.0	49042.146	Tx : 119731800.000	595	755	611.000
					Rx : 119731800.000			
					Loss : 0			
					Loss% : 0.00			
Trial: 1 / FS: 1280 / Iter: 1	10	10	480769.2	4923.077	Tx : 9615384.000	510	547	528.500
					Rx : 9615384.000			
					Loss : 0			
					Loss% : 0.00			
Trial: 1 / FS: 1280 / Iter: 2	55	55	2644230.6	27076.922	Tx : 52884616.000	515	545	527.500
					Rx : 52884616.000			
					Loss : 0			
					Loss% : 0.00			
Trial: 1 / FS: 1280 / Iter: 3	78	78	3725961.4	38153.844	Tx : 74519230.000	515	547	527.500
					Rx : 74519230.000			
					Loss : 0			
					Loss% : 0.00			
Trial: 1 / FS: 1280 / Iter: 4	89	89	4266826.7	43692.305	Tx : 85336538.000	515	615	527.500
					Rx : 85336538.000			
					Loss : 0			
					Loss% : 0.00			
Trial: 1 / FS: 1280 / Iter: 5	94	94	4537259.8	46461.540	Tx : 90745192.000	510	642	528.500
					Rx : 90745192.000			
					Loss : 0			
					Loss% : 0.00			
Trial: 1 / FS: 1280 / Iter: 6	97	97	4672475.9	47846.153	Tx : 93449520.000	510	657	528.500
					Rx : 93449520.000			
					Loss : 0			
					Loss% : 0.00			
Trial: 1 / FS: 1280 / Iter: 7	99	99	4740084.2	48538.462	Tx : 94801682.000	510	675	529.000
					Rx : 94801682.000			
					Loss : 0			
					Loss% : 0.00			
Trial: 1 / FS: 1280 / Iter: 8	99	99	4773888.3	48884.616	Tx : 95477764.000	515	665	528.500
					Rx : 95477764.000			
					Loss : 0			
					Loss% : 0.00			
Trial: 1 / FS: 1280 / Iter: 9	100	100	4807692.3	49230.769	Tx : 96153846.000	525	677	539.000
					Rx : 96153846.000			
					Loss : 0			
					Loss% : 0.00			
Trial: 1 / FS: 1518 / Iter: 1	10	10	406371.9	4934.980	Tx : 8127438.000	437	477	456.000
					Rx : 8127438.000			
					Loss : 0			
					Loss% : 0.00			
Trial: 1 / FS: 1518 / Iter: 2	55	55	2235045.6	27142.394	Tx : 44700910.000	440	472	455.500
					Rx : 44700910.000			
					Loss : 0			
					Loss% : 0.00			
Trial: 1 / FS: 1518 / Iter: 3	78	78	3149382.3	38246.099	Tx : 62987646.000	437	477	456.000
					Rx : 62987646.000			
					Loss : 0			
					Loss% : 0.00			
Trial: 1 / FS: 1518 / Iter: 4	89	89	3606550.7	43797.951	Tx : 72131014.000	437	545	456.000
					Rx : 72131014.000			
					Loss : 0			
					Loss% : 0.00			

Trial: 1 / FS: 1518 / Iter: 5	94	94	3835134.7	46573.876	Tx :	76702698.000	437	572	456.000
					Rx :	76702698.000			
					Loss :	0			
					Loss% :	0.00			
Trial: 1 / FS: 1518 / Iter: 6	97	97	3949427.0	47961.841	Tx :	78988540.000	440	575	455.500
					Rx :	78988540.000			
					Loss :	0			
					Loss% :	0.00			
Trial: 1 / FS: 1518 / Iter: 7	99	99	4006573.3	48655.826	Tx :	80131462.000	437	597	457.000
					Rx :	80131462.000			
					Loss :	0			
					Loss% :	0.00			
Trial: 1 / FS: 1518 / Iter: 8	99	99	4035146.1	49002.815	Tx :	80702922.000	442	597	456.500
					Rx :	80702922.000			
					Loss :	0			
					Loss% :	0.00			
Trial: 1 / FS: 1518 / Iter: 9	100	100	4063719.1	49349.805	Tx :	81274382.000	455	610	468.500
					Rx :	81274382.000			
					Loss :	0			
					Loss% :	0.00			

RFC2544 - Throughput/Latency - Per Flow Statistics - Part 1 of 2

Trial / Framesize / Iteration	Tx Port	Rx Port	Flow Group	L2 Throughput				L1 Throughput		Throughput (frames)
				Tx Rate %	Rx Rate			Tx Rate Mbps	Rx Rate Mbps	
					%	FPS	Mbps			
Trial: 1 / FS: 64 / Iter: 9	6-4	6-5	QT-Rfc2544Tput-Endpoint Set-1 - Flow Group 0001	100.00	100	37202380.9	19047.62			Tx : 744047619 Rx : 744047619 Loss : 0 Loss% : 0.000
Trial: 1 / FS: 64 / Iter: 9	6-5	6-4	QT-Rfc2544Tput-Endpoint Set-1 - Flow Group 0002	100.00	100	37202380.9	19047.62			Tx : 744047619 Rx : 744047619 Loss : 0 Loss% : 0.000
Trial: 1 / FS: 128 / Iter: 9	6-4	6-5	QT-Rfc2544Tput-Endpoint Set-1 - Flow Group 0001	100.00	100	21114864.8	21621.62			Tx : 422297297 Rx : 422297297 Loss : 0 Loss% : 0.000
Trial: 1 / FS: 128 / Iter: 9	6-5	6-4	QT-Rfc2544Tput-Endpoint Set-1 - Flow Group 0002	100.00	100	21114864.9	21621.62			Tx : 422297297 Rx : 422297297 Loss : 0 Loss% : 0.000
Trial: 1 / FS: 256 / Iter: 9	6-4	6-5	QT-Rfc2544Tput-Endpoint Set-1 - Flow Group 0001	100.00	100	11322463.8	23188.41			Tx : 226449275 Rx : 226449275 Loss : 0 Loss% : 0.000
Trial: 1 / FS: 256 / Iter: 9	6-5	6-4	QT-Rfc2544Tput-Endpoint Set-1 - Flow Group 0002	100.00	100	11322463.8	23188.41			Tx : 226449275 Rx : 226449275 Loss : 0 Loss% : 0.000
Trial: 1 / FS: 512 / Iter: 9	6-4	6-5	QT-Rfc2544Tput-Endpoint Set-1 - Flow Group 0001	100.00	100	5874060.1	24060.15			Tx : 117481203 Rx : 117481203 Loss : 0 Loss% : 0.000
Trial: 1 / FS: 512 / Iter: 9	6-5	6-4	QT-Rfc2544Tput-Endpoint Set-1 - Flow Group 0002	100.00	100	5874060.1	24060.15			Tx : 117481203 Rx : 117481203 Loss : 0 Loss% : 0.000
Trial: 1 / FS: 1024 / Iter: 9	6-4	6-5	QT-Rfc2544Tput-Endpoint Set-1 - Flow Group 0001	100.00	100	2993295.0	24521.07			Tx : 59865900 Rx : 59865900 Loss : 0 Loss% : 0.000
Trial: 1 / FS: 1024 / Iter: 9	6-5	6-4	QT-Rfc2544Tput-Endpoint Set-1 - Flow Group 0002	100.00	100	2993295.0	24521.07			Tx : 59865900 Rx : 59865900 Loss : 0 Loss% : 0.000
Trial: 1 / FS: 1280 / Iter: 9	6-4	6-5	QT-Rfc2544Tput-Endpoint Set-1 - Flow Group 0001	100.00	100	2403846.2	24615.39			Tx : 48076923 Rx : 48076923 Loss : 0 Loss% : 0.000
Trial: 1 / FS: 1280 / Iter: 9	6-5	6-4	QT-Rfc2544Tput-Endpoint Set-1 - Flow Group 0002	100.00	100	2403846.2	24615.39			Tx : 48076923 Rx : 48076923 Loss : 0 Loss% : 0.000
Trial: 1 / FS: 1518 / Iter: 9	6-4	6-5	QT-Rfc2544Tput-Endpoint Set-1 - Flow Group 0001	100.00	100	2031859.5	24674.90			Tx : 40637191 Rx : 40637191 Loss : 0 Loss% : 0.000

Trial: 1 / FS: 1518 / Iter: 9	6-5	6-4	QT-Rfc2544Tput-Endpoint Set-1 - Flow Group 0002	100.00	100	2031859.6	24674.90	Tx : 40637191
								Rx : 40637191
								Loss : 0
								Loss% : 0.000

RFC2544 - Throughput/Latency - Per Flow Statistics - Part 2 of 2

Trial / Framesize / Iteration	Tx Port	Rx Port	Flow Group	Min Latency (ns)	Max Latency (ns)	Avg Latency (ns)
Trial: 1 / FS: 64 / Iter: 9	6-4	6-5	QT-Rfc2544Tput-Endpoint Set-1 - Flow Group 0001	847	997	857
Trial: 1 / FS: 64 / Iter: 9	6-5	6-4	QT-Rfc2544Tput-Endpoint Set-1 - Flow Group 0002	847	992	855
Trial: 1 / FS: 128 / Iter: 9	6-4	6-5	QT-Rfc2544Tput-Endpoint Set-1 - Flow Group 0001	837	990	852
Trial: 1 / FS: 128 / Iter: 9	6-5	6-4	QT-Rfc2544Tput-Endpoint Set-1 - Flow Group 0002	842	862	855
Trial: 1 / FS: 256 / Iter: 9	6-4	6-5	QT-Rfc2544Tput-Endpoint Set-1 - Flow Group 0001	832	847	840
Trial: 1 / FS: 256 / Iter: 9	6-5	6-4	QT-Rfc2544Tput-Endpoint Set-1 - Flow Group 0002	832	992	848
Trial: 1 / FS: 512 / Iter: 9	6-4	6-5	QT-Rfc2544Tput-Endpoint Set-1 - Flow Group 0001	747	912	767
Trial: 1 / FS: 512 / Iter: 9	6-5	6-4	QT-Rfc2544Tput-Endpoint Set-1 - Flow Group 0002	760	912	771
Trial: 1 / FS: 1024 / Iter: 9	6-4	6-5	QT-Rfc2544Tput-Endpoint Set-1 - Flow Group 0001	595	755	612
Trial: 1 / FS: 1024 / Iter: 9	6-5	6-4	QT-Rfc2544Tput-Endpoint Set-1 - Flow Group 0002	602	617	610
Trial: 1 / FS: 1280 / Iter: 9	6-4	6-5	QT-Rfc2544Tput-Endpoint Set-1 - Flow Group 0001	532	545	538
Trial: 1 / FS: 1280 / Iter: 9	6-5	6-4	QT-Rfc2544Tput-Endpoint Set-1 - Flow Group 0002	525	677	540
Trial: 1 / FS: 1518 / Iter: 9	6-4	6-5	QT-Rfc2544Tput-Endpoint Set-1 - Flow Group 0001	457	607	468
Trial: 1 / FS: 1518 / Iter: 9	6-5	6-4	QT-Rfc2544Tput-Endpoint Set-1 - Flow Group 0002	455	610	469

RFC2544 - Throughput/Latency - Iteration Statistics - Part 1 of 2

Trial / Framesize / Iteration	Tx Port	Rx Port	Flow Group	L2 Throughput				L1 Throughput		Throughput (frames)
				Tx Rate %	Rx Rate			Tx Rate Mbps	Rx Rate Mbps	
					%	FPS	Mbps			
Trial: 1 / FS: 64 / Iter: 1	6-4	6-5	QT-Rfc2544Tput-Endpoint Set-1 - Flow Group 0001	10.00	10.00	3720238.1	1904.76			Tx : 74404762 Rx : 74404762 Loss : 0 Loss% : 0.000
Trial: 1 / FS: 64 / Iter: 1	6-5	6-4	QT-Rfc2544Tput-Endpoint Set-1 - Flow Group 0002	10.00	10.00	3720238.1	1904.76			Tx : 74404762 Rx : 74404762 Loss : 0 Loss% : 0.000
Trial: 1 / FS: 64 / Iter: 2	6-4	6-5	QT-Rfc2544Tput-Endpoint Set-1 - Flow Group 0001	55.00	55.00	20461306.5	10476.19			Tx : 409226190 Rx : 409226190 Loss : 0 Loss% : 0.000
Trial: 1 / FS: 64 / Iter: 2	6-5	6-4	QT-Rfc2544Tput-Endpoint Set-1 - Flow Group 0002	55.00	55.00	20461306.5	10476.19			Tx : 409226190 Rx : 409226190 Loss : 0 Loss% : 0.000
Trial: 1 / FS: 64 / Iter: 3	6-4	6-5	QT-Rfc2544Tput-Endpoint Set-1 - Flow Group 0001	77.50	77.50	28831815.9	14761.89			Tx : 576636905 Rx : 576636905 Loss : 0 Loss% : 0.000
Trial: 1 / FS: 64 / Iter: 3	6-5	6-4	QT-Rfc2544Tput-Endpoint Set-1 - Flow Group 0002	77.50	77.50	28831815.9	14761.89			Tx : 576636905 Rx : 576636905 Loss : 0 Loss% : 0.000
Trial: 1 / FS: 64 / Iter: 4	6-4	6-5	QT-Rfc2544Tput-Endpoint Set-1 - Flow Group 0001	88.75	88.75	33017091.5	16904.75			Tx : 660342262 Rx : 660342262 Loss : 0 Loss% : 0.000
Trial: 1 / FS: 64 / Iter: 4	6-5	6-4	QT-Rfc2544Tput-Endpoint Set-1 - Flow Group 0002	88.75	88.75	33017091.5	16904.75			Tx : 660342262 Rx : 660342262 Loss : 0 Loss% : 0.000
Trial: 1 / FS: 64 / Iter: 5	6-4	6-5	QT-Rfc2544Tput-Endpoint Set-1 - Flow Group 0001	94.38	94.38	35109759.1	17976.20			Tx : 702194940 Rx : 702194940 Loss : 0 Loss% : 0.000
Trial: 1 / FS: 64 / Iter: 5	6-5	6-4	QT-Rfc2544Tput-Endpoint Set-1 - Flow Group 0002	94.38	94.38	35109759.1	17976.20			Tx : 702194940 Rx : 702194940 Loss : 0 Loss% : 0.000
Trial: 1 / FS: 64 / Iter: 6	6-4	6-5	QT-Rfc2544Tput-Endpoint Set-1 - Flow Group 0001	97.19	97.19	36156047.2	18511.90			Tx : 723121280 Rx : 723121280 Loss : 0 Loss% : 0.000
Trial: 1 / FS: 64 / Iter: 6	6-5	6-4	QT-Rfc2544Tput-Endpoint Set-1 - Flow Group 0002	97.19	97.19	36156047.2	18511.90			Tx : 723121280 Rx : 723121280 Loss : 0 Loss% : 0.000
Trial: 1 / FS: 64 / Iter: 7	6-4	6-5	QT-Rfc2544Tput-Endpoint Set-1 - Flow Group 0001	98.59	98.59	36679265.6	18779.78			Tx : 733584449 Rx : 733584449 Loss : 0 Loss% : 0.000

Trial: 1 / FS: 64 / Iter: 7	6-5	6-4	QT-Rfc2544Tput-Endpoint Set-1 - Flow Group 0002	98.59	98.59	36679265.6	18779.78	Tx : Rx : Loss : Loss% :	733584449 733584449 0 0.000
Trial: 1 / FS: 64 / Iter: 8	6-4	6-5	QT-Rfc2544Tput-Endpoint Set-1 - Flow Group 0001	99.30	99.30	36940836.9	18913.71	Tx : Rx : Loss : Loss% :	738816034 738816034 0 0.000
Trial: 1 / FS: 64 / Iter: 8	6-5	6-4	QT-Rfc2544Tput-Endpoint Set-1 - Flow Group 0002	99.30	99.30	36940836.9	18913.71	Tx : Rx : Loss : Loss% :	738816034 738816034 0 0.000
Trial: 1 / FS: 64 / Iter: 9	6-4	6-5	QT-Rfc2544Tput-Endpoint Set-1 - Flow Group 0001	100.00	100.00	37202380.9	19047.62	Tx : Rx : Loss : Loss% :	744047619 744047619 0 0.000
Trial: 1 / FS: 64 / Iter: 9	6-5	6-4	QT-Rfc2544Tput-Endpoint Set-1 - Flow Group 0002	100.00	100.00	37202380.9	19047.62	Tx : Rx : Loss : Loss% :	744047619 744047619 0 0.000
Trial: 1 / FS: 128 / Iter: 1	6-4	6-5	QT-Rfc2544Tput-Endpoint Set-1 - Flow Group 0001	10.00	10.00	2111486.5	2162.16	Tx : Rx : Loss : Loss% :	42229730 42229730 0 0.000
Trial: 1 / FS: 128 / Iter: 1	6-5	6-4	QT-Rfc2544Tput-Endpoint Set-1 - Flow Group 0002	10.00	10.00	2111486.5	2162.16	Tx : Rx : Loss : Loss% :	42229730 42229730 0 0.000
Trial: 1 / FS: 128 / Iter: 2	6-4	6-5	QT-Rfc2544Tput-Endpoint Set-1 - Flow Group 0001	55.00	55.00	11613179.5	11891.90	Tx : Rx : Loss : Loss% :	232263514 232263514 0 0.000
Trial: 1 / FS: 128 / Iter: 2	6-5	6-4	QT-Rfc2544Tput-Endpoint Set-1 - Flow Group 0002	55.00	55.00	11613179.5	11891.90	Tx : Rx : Loss : Loss% :	232263514 232263514 0 0.000
Trial: 1 / FS: 128 / Iter: 3	6-4	6-5	QT-Rfc2544Tput-Endpoint Set-1 - Flow Group 0001	77.50	77.50	16364017.6	16756.75	Tx : Rx : Loss : Loss% :	327280405 327280405 0 0.000
Trial: 1 / FS: 128 / Iter: 3	6-5	6-4	QT-Rfc2544Tput-Endpoint Set-1 - Flow Group 0002	77.50	77.50	16364017.6	16756.75	Tx : Rx : Loss : Loss% :	327280405 327280405 0 0.000
Trial: 1 / FS: 128 / Iter: 4	6-4	6-5	QT-Rfc2544Tput-Endpoint Set-1 - Flow Group 0001	88.75	88.75	18739449.9	19189.20	Tx : Rx : Loss : Loss% :	374788851 374788851 0 0.000
Trial: 1 / FS: 128 / Iter: 4	6-5	6-4	QT-Rfc2544Tput-Endpoint Set-1 - Flow Group 0002	88.75	88.75	18739449.9	19189.20	Tx : Rx : Loss : Loss% :	374788851 374788851 0 0.000
Trial: 1 / FS: 128 / Iter: 5	6-4	6-5	QT-Rfc2544Tput-Endpoint Set-1 - Flow Group 0001	94.38	94.38	19927141.4	20405.39	Tx : Rx : Loss : Loss% :	398543074 398543074 0 0.000
Trial: 1 / FS: 128 / Iter: 5	6-5	6-4	QT-Rfc2544Tput-Endpoint Set-1 - Flow Group 0002	94.38	94.38	19927141.4	20405.39	Tx : Rx : Loss : Loss% :	398543074 398543074 0 0.000

Trial: 1 / FS: 128 / Iter: 6	6-4	6-5	QT-Rfc2544Tput-Endpoint Set-1 - Flow Group 0001	97.19	97.19	20521009.2	21013.51	Tx : Rx : Loss : Loss% :	410420186 410420186 0 0.000
Trial: 1 / FS: 128 / Iter: 6	6-5	6-4	QT-Rfc2544Tput-Endpoint Set-1 - Flow Group 0002	97.19	97.19	20521009.2	21013.51	Tx : Rx : Loss : Loss% :	410420186 410420186 0 0.000
Trial: 1 / FS: 128 / Iter: 7	6-4	6-5	QT-Rfc2544Tput-Endpoint Set-1 - Flow Group 0001	98.59	98.59	20817950.3	21317.58	Tx : Rx : Loss : Loss% :	416358742 416358742 0 0.000
Trial: 1 / FS: 128 / Iter: 7	6-5	6-4	QT-Rfc2544Tput-Endpoint Set-1 - Flow Group 0002	98.59	98.59	20817950.3	21317.58	Tx : Rx : Loss : Loss% :	416358742 416358742 0 0.000
Trial: 1 / FS: 128 / Iter: 8	6-4	6-5	QT-Rfc2544Tput-Endpoint Set-1 - Flow Group 0001	99.30	99.30	20966386.6	21469.58	Tx : Rx : Loss : Loss% :	419328019 419328019 0 0.000
Trial: 1 / FS: 128 / Iter: 8	6-5	6-4	QT-Rfc2544Tput-Endpoint Set-1 - Flow Group 0002	99.30	99.30	20966386.6	21469.58	Tx : Rx : Loss : Loss% :	419328019 419328019 0 0.000
Trial: 1 / FS: 128 / Iter: 9	6-4	6-5	QT-Rfc2544Tput-Endpoint Set-1 - Flow Group 0001	100.00	100.00	21114864.8	21621.62	Tx : Rx : Loss : Loss% :	422297297 422297297 0 0.000
Trial: 1 / FS: 128 / Iter: 9	6-5	6-4	QT-Rfc2544Tput-Endpoint Set-1 - Flow Group 0002	100.00	100.00	21114864.9	21621.62	Tx : Rx : Loss : Loss% :	422297297 422297297 0 0.000
Trial: 1 / FS: 256 / Iter: 1	6-4	6-5	QT-Rfc2544Tput-Endpoint Set-1 - Flow Group 0001	10.00	10.00	1132246.4	2318.84	Tx : Rx : Loss : Loss% :	22644928 22644928 0 0.000
Trial: 1 / FS: 256 / Iter: 1	6-5	6-4	QT-Rfc2544Tput-Endpoint Set-1 - Flow Group 0002	10.00	10.00	1132246.4	2318.84	Tx : Rx : Loss : Loss% :	22644928 22644928 0 0.000
Trial: 1 / FS: 256 / Iter: 2	6-4	6-5	QT-Rfc2544Tput-Endpoint Set-1 - Flow Group 0001	55.00	55.00	6227355.9	12753.63	Tx : Rx : Loss : Loss% :	124547101 124547101 0 0.000
Trial: 1 / FS: 256 / Iter: 2	6-5	6-4	QT-Rfc2544Tput-Endpoint Set-1 - Flow Group 0002	55.00	55.00	6227355.9	12753.63	Tx : Rx : Loss : Loss% :	124547101 124547101 0 0.000
Trial: 1 / FS: 256 / Iter: 3	6-4	6-5	QT-Rfc2544Tput-Endpoint Set-1 - Flow Group 0001	77.50	77.50	8774906.5	17971.01	Tx : Rx : Loss : Loss% :	175498188 175498188 0 0.000
Trial: 1 / FS: 256 / Iter: 3	6-5	6-4	QT-Rfc2544Tput-Endpoint Set-1 - Flow Group 0002	77.50	77.50	8774906.5	17971.01	Tx : Rx : Loss : Loss% :	175498188 175498188 0 0.000
Trial: 1 / FS: 256 / Iter: 4	6-4	6-5	QT-Rfc2544Tput-Endpoint Set-1 - Flow Group 0001	88.75	88.75	10048689.0	20579.72	Tx : Rx : Loss : Loss% :	200973732 200973732 0 0.000

Trial: 1 / FS: 256 / Iter: 4	6-5	6-4	QT-Rfc2544Tput-Endpoint Set-1 - Flow Group 0002	88.75	88.75	10048689.0	20579.72	Tx : Rx : Loss : Loss% :	200973732 200973732 0 0.000
Trial: 1 / FS: 256 / Iter: 5	6-4	6-5	QT-Rfc2544Tput-Endpoint Set-1 - Flow Group 0001	94.38	94.38	10685571.2	21884.05	Tx : Rx : Loss : Loss% :	213711504 213711504 0 0.000
Trial: 1 / FS: 256 / Iter: 5	6-5	6-4	QT-Rfc2544Tput-Endpoint Set-1 - Flow Group 0002	94.38	94.38	10685571.2	21884.05	Tx : Rx : Loss : Loss% :	213711504 213711504 0 0.000
Trial: 1 / FS: 256 / Iter: 6	6-4	6-5	QT-Rfc2544Tput-Endpoint Set-1 - Flow Group 0001	97.19	97.19	11004022.5	22536.24	Tx : Rx : Loss : Loss% :	220080389 220080389 0 0.000
Trial: 1 / FS: 256 / Iter: 6	6-5	6-4	QT-Rfc2544Tput-Endpoint Set-1 - Flow Group 0002	97.19	97.19	11004022.5	22536.24	Tx : Rx : Loss : Loss% :	220080389 220080389 0 0.000
Trial: 1 / FS: 256 / Iter: 7	6-4	6-5	QT-Rfc2544Tput-Endpoint Set-1 - Flow Group 0001	98.59	98.59	11163245.0	22862.33	Tx : Rx : Loss : Loss% :	223264832 223264832 0 0.000
Trial: 1 / FS: 256 / Iter: 7	6-5	6-4	QT-Rfc2544Tput-Endpoint Set-1 - Flow Group 0002	98.59	98.59	11163245.0	22862.33	Tx : Rx : Loss : Loss% :	223264832 223264832 0 0.000
Trial: 1 / FS: 256 / Iter: 8	6-4	6-5	QT-Rfc2544Tput-Endpoint Set-1 - Flow Group 0001	99.30	99.30	11242853.5	23025.36	Tx : Rx : Loss : Loss% :	224857054 224857054 0 0.000
Trial: 1 / FS: 256 / Iter: 8	6-5	6-4	QT-Rfc2544Tput-Endpoint Set-1 - Flow Group 0002	99.30	99.30	11242853.5	23025.36	Tx : Rx : Loss : Loss% :	224857054 224857054 0 0.000
Trial: 1 / FS: 256 / Iter: 9	6-4	6-5	QT-Rfc2544Tput-Endpoint Set-1 - Flow Group 0001	100.00	100.00	11322463.8	23188.41	Tx : Rx : Loss : Loss% :	226449275 226449275 0 0.000
Trial: 1 / FS: 256 / Iter: 9	6-5	6-4	QT-Rfc2544Tput-Endpoint Set-1 - Flow Group 0002	100.00	100.00	11322463.8	23188.41	Tx : Rx : Loss : Loss% :	226449275 226449275 0 0.000
Trial: 1 / FS: 512 / Iter: 1	6-4	6-5	QT-Rfc2544Tput-Endpoint Set-1 - Flow Group 0001	10.00	10.00	587406.0	2406.02	Tx : Rx : Loss : Loss% :	11748120 11748120 0 0.000
Trial: 1 / FS: 512 / Iter: 1	6-5	6-4	QT-Rfc2544Tput-Endpoint Set-1 - Flow Group 0002	10.00	10.00	587406.0	2406.02	Tx : Rx : Loss : Loss% :	11748120 11748120 0 0.000
Trial: 1 / FS: 512 / Iter: 2	6-4	6-5	QT-Rfc2544Tput-Endpoint Set-1 - Flow Group 0001	55.00	55.00	3230733.2	13233.08	Tx : Rx : Loss : Loss% :	64614662 64614662 0 0.000
Trial: 1 / FS: 512 / Iter: 2	6-5	6-4	QT-Rfc2544Tput-Endpoint Set-1 - Flow Group 0002	55.00	55.00	3230733.2	13233.08	Tx : Rx : Loss : Loss% :	64614662 64614662 0 0.000

Trial: 1 / FS: 512 / Iter: 3	6-4	6-5	QT-Rfc2544Tput-Endpoint Set-1 - Flow Group 0001	77.50	77.50	4552396.3	18646.62	Tx : Rx : Loss : Loss% :	91047932 91047932 0 0.000
Trial: 1 / FS: 512 / Iter: 3	6-5	6-4	QT-Rfc2544Tput-Endpoint Set-1 - Flow Group 0002	77.50	77.50	4552396.3	18646.62	Tx : Rx : Loss : Loss% :	91047932 91047932 0 0.000
Trial: 1 / FS: 512 / Iter: 4	6-4	6-5	QT-Rfc2544Tput-Endpoint Set-1 - Flow Group 0001	88.75	88.75	5213229.2	21353.39	Tx : Rx : Loss : Loss% :	104264568 104264568 0 0.000
Trial: 1 / FS: 512 / Iter: 4	6-5	6-4	QT-Rfc2544Tput-Endpoint Set-1 - Flow Group 0002	88.75	88.75	5213229.2	21353.39	Tx : Rx : Loss : Loss% :	104264568 104264568 0 0.000
Trial: 1 / FS: 512 / Iter: 5	6-4	6-5	QT-Rfc2544Tput-Endpoint Set-1 - Flow Group 0001	94.38	94.38	5543645.4	22706.77	Tx : Rx : Loss : Loss% :	110872885 110872885 0 0.000
Trial: 1 / FS: 512 / Iter: 5	6-5	6-4	QT-Rfc2544Tput-Endpoint Set-1 - Flow Group 0002	94.38	94.38	5543645.4	22706.77	Tx : Rx : Loss : Loss% :	110872885 110872885 0 0.000
Trial: 1 / FS: 512 / Iter: 6	6-4	6-5	QT-Rfc2544Tput-Endpoint Set-1 - Flow Group 0001	97.19	97.19	5708852.1	23383.46	Tx : Rx : Loss : Loss% :	114177044 114177044 0 0.000
Trial: 1 / FS: 512 / Iter: 6	6-5	6-4	QT-Rfc2544Tput-Endpoint Set-1 - Flow Group 0002	97.19	97.19	5708852.1	23383.46	Tx : Rx : Loss : Loss% :	114177044 114177044 0 0.000
Trial: 1 / FS: 512 / Iter: 7	6-4	6-5	QT-Rfc2544Tput-Endpoint Set-1 - Flow Group 0001	98.59	98.59	5791456.9	23721.81	Tx : Rx : Loss : Loss% :	115829124 115829124 0 0.000
Trial: 1 / FS: 512 / Iter: 7	6-5	6-4	QT-Rfc2544Tput-Endpoint Set-1 - Flow Group 0002	98.59	98.59	5791456.9	23721.81	Tx : Rx : Loss : Loss% :	115829124 115829124 0 0.000
Trial: 1 / FS: 512 / Iter: 8	6-4	6-5	QT-Rfc2544Tput-Endpoint Set-1 - Flow Group 0001	99.30	99.30	5832758.4	23890.98	Tx : Rx : Loss : Loss% :	116655163 116655163 0 0.000
Trial: 1 / FS: 512 / Iter: 8	6-5	6-4	QT-Rfc2544Tput-Endpoint Set-1 - Flow Group 0002	99.30	99.30	5832758.4	23890.98	Tx : Rx : Loss : Loss% :	116655163 116655163 0 0.000
Trial: 1 / FS: 512 / Iter: 9	6-4	6-5	QT-Rfc2544Tput-Endpoint Set-1 - Flow Group 0001	100.00	100.00	5874060.1	24060.15	Tx : Rx : Loss : Loss% :	117481203 117481203 0 0.000
Trial: 1 / FS: 512 / Iter: 9	6-5	6-4	QT-Rfc2544Tput-Endpoint Set-1 - Flow Group 0002	100.00	100.00	5874060.1	24060.15	Tx : Rx : Loss : Loss% :	117481203 117481203 0 0.000
Trial: 1 / FS: 1024 / Iter: 1	6-4	6-5	QT-Rfc2544Tput-Endpoint Set-1 - Flow Group 0001	10.00	10.00	299329.5	2452.11	Tx : Rx : Loss : Loss% :	5986590 5986590 0 0.000

Trial: 1 / FS: 1024 / Iter: 1	6-5	6-4	QT-Rfc2544Tput-Endpoint Set-1 - Flow Group 0002	10.00	10.00	299329.5	2452.11	Tx : Rx : Loss : Loss% :	5986590 5986590 0 0.000
Trial: 1 / FS: 1024 / Iter: 2	6-4	6-5	QT-Rfc2544Tput-Endpoint Set-1 - Flow Group 0001	55.00	55.00	1646312.2	13486.59	Tx : Rx : Loss : Loss% :	32926245 32926245 0 0.000
Trial: 1 / FS: 1024 / Iter: 2	6-5	6-4	QT-Rfc2544Tput-Endpoint Set-1 - Flow Group 0002	55.00	55.00	1646312.2	13486.59	Tx : Rx : Loss : Loss% :	32926245 32926245 0 0.000
Trial: 1 / FS: 1024 / Iter: 3	6-4	6-5	QT-Rfc2544Tput-Endpoint Set-1 - Flow Group 0001	77.50	77.50	2319803.8	19003.83	Tx : Rx : Loss : Loss% :	46396073 46396073 0 0.000
Trial: 1 / FS: 1024 / Iter: 3	6-5	6-4	QT-Rfc2544Tput-Endpoint Set-1 - Flow Group 0002	77.50	77.50	2319803.8	19003.83	Tx : Rx : Loss : Loss% :	46396073 46396073 0 0.000
Trial: 1 / FS: 1024 / Iter: 4	6-4	6-5	QT-Rfc2544Tput-Endpoint Set-1 - Flow Group 0001	88.75	88.75	2656549.1	21762.45	Tx : Rx : Loss : Loss% :	53130987 53130987 0 0.000
Trial: 1 / FS: 1024 / Iter: 4	6-5	6-4	QT-Rfc2544Tput-Endpoint Set-1 - Flow Group 0002	88.75	88.75	2656549.1	21762.45	Tx : Rx : Loss : Loss% :	53130987 53130987 0 0.000
Trial: 1 / FS: 1024 / Iter: 5	6-4	6-5	QT-Rfc2544Tput-Endpoint Set-1 - Flow Group 0001	94.38	94.38	2824922.3	23141.76	Tx : Rx : Loss : Loss% :	56498443 56498443 0 0.000
Trial: 1 / FS: 1024 / Iter: 5	6-5	6-4	QT-Rfc2544Tput-Endpoint Set-1 - Flow Group 0002	94.38	94.38	2824922.3	23141.76	Tx : Rx : Loss : Loss% :	56498443 56498443 0 0.000
Trial: 1 / FS: 1024 / Iter: 6	6-4	6-5	QT-Rfc2544Tput-Endpoint Set-1 - Flow Group 0001	97.19	97.19	2909108.8	23831.42	Tx : Rx : Loss : Loss% :	58182172 58182172 0 0.000
Trial: 1 / FS: 1024 / Iter: 6	6-5	6-4	QT-Rfc2544Tput-Endpoint Set-1 - Flow Group 0002	97.19	97.19	2909108.8	23831.42	Tx : Rx : Loss : Loss% :	58182172 58182172 0 0.000
Trial: 1 / FS: 1024 / Iter: 7	6-4	6-5	QT-Rfc2544Tput-Endpoint Set-1 - Flow Group 0001	98.59	98.59	2951201.9	24176.25	Tx : Rx : Loss : Loss% :	59024036 59024036 0 0.000
Trial: 1 / FS: 1024 / Iter: 7	6-5	6-4	QT-Rfc2544Tput-Endpoint Set-1 - Flow Group 0002	98.59	98.59	2951201.9	24176.25	Tx : Rx : Loss : Loss% :	59024036 59024036 0 0.000
Trial: 1 / FS: 1024 / Iter: 8	6-4	6-5	QT-Rfc2544Tput-Endpoint Set-1 - Flow Group 0001	99.30	99.30	2972248.5	24348.66	Tx : Rx : Loss : Loss% :	59444968 59444968 0 0.000
Trial: 1 / FS: 1024 / Iter: 8	6-5	6-4	QT-Rfc2544Tput-Endpoint Set-1 - Flow Group 0002	99.30	99.30	2972248.5	24348.66	Tx : Rx : Loss : Loss% :	59444968 59444968 0 0.000

Trial: 1 / FS: 1024 / Iter: 9	6-4	6-5	QT-Rfc2544Tput-Endpoint Set-1 - Flow Group 0001	100.00	100.00	2993295.0	24521.07	Tx : Rx : Loss : Loss% :	59865900 59865900 0 0.000
Trial: 1 / FS: 1024 / Iter: 9	6-5	6-4	QT-Rfc2544Tput-Endpoint Set-1 - Flow Group 0002	100.00	100.00	2993295.0	24521.07	Tx : Rx : Loss : Loss% :	59865900 59865900 0 0.000
Trial: 1 / FS: 1280 / Iter: 1	6-4	6-5	QT-Rfc2544Tput-Endpoint Set-1 - Flow Group 0001	10.00	10.00	240384.6	2461.54	Tx : Rx : Loss : Loss% :	4807692 4807692 0 0.000
Trial: 1 / FS: 1280 / Iter: 1	6-5	6-4	QT-Rfc2544Tput-Endpoint Set-1 - Flow Group 0002	10.00	10.00	240384.6	2461.54	Tx : Rx : Loss : Loss% :	4807692 4807692 0 0.000
Trial: 1 / FS: 1280 / Iter: 2	6-4	6-5	QT-Rfc2544Tput-Endpoint Set-1 - Flow Group 0001	55.00	55.00	1322115.3	13538.46	Tx : Rx : Loss : Loss% :	26442308 26442308 0 0.000
Trial: 1 / FS: 1280 / Iter: 2	6-5	6-4	QT-Rfc2544Tput-Endpoint Set-1 - Flow Group 0002	55.00	55.00	1322115.3	13538.46	Tx : Rx : Loss : Loss% :	26442308 26442308 0 0.000
Trial: 1 / FS: 1280 / Iter: 3	6-4	6-5	QT-Rfc2544Tput-Endpoint Set-1 - Flow Group 0001	77.50	77.50	1862980.7	19076.92	Tx : Rx : Loss : Loss% :	37259615 37259615 0 0.000
Trial: 1 / FS: 1280 / Iter: 3	6-5	6-4	QT-Rfc2544Tput-Endpoint Set-1 - Flow Group 0002	77.50	77.50	1862980.7	19076.92	Tx : Rx : Loss : Loss% :	37259615 37259615 0 0.000
Trial: 1 / FS: 1280 / Iter: 4	6-4	6-5	QT-Rfc2544Tput-Endpoint Set-1 - Flow Group 0001	88.75	88.75	2133413.3	21846.15	Tx : Rx : Loss : Loss% :	42668269 42668269 0 0.000
Trial: 1 / FS: 1280 / Iter: 4	6-5	6-4	QT-Rfc2544Tput-Endpoint Set-1 - Flow Group 0002	88.75	88.75	2133413.3	21846.15	Tx : Rx : Loss : Loss% :	42668269 42668269 0 0.000
Trial: 1 / FS: 1280 / Iter: 5	6-4	6-5	QT-Rfc2544Tput-Endpoint Set-1 - Flow Group 0001	94.38	94.38	2268629.9	23230.77	Tx : Rx : Loss : Loss% :	45372596 45372596 0 0.000
Trial: 1 / FS: 1280 / Iter: 5	6-5	6-4	QT-Rfc2544Tput-Endpoint Set-1 - Flow Group 0002	94.38	94.38	2268629.9	23230.77	Tx : Rx : Loss : Loss% :	45372596 45372596 0 0.000
Trial: 1 / FS: 1280 / Iter: 6	6-4	6-5	QT-Rfc2544Tput-Endpoint Set-1 - Flow Group 0001	97.19	97.19	2336237.9	23923.08	Tx : Rx : Loss : Loss% :	46724760 46724760 0 0.000
Trial: 1 / FS: 1280 / Iter: 6	6-5	6-4	QT-Rfc2544Tput-Endpoint Set-1 - Flow Group 0002	97.19	97.19	2336237.9	23923.08	Tx : Rx : Loss : Loss% :	46724760 46724760 0 0.000
Trial: 1 / FS: 1280 / Iter: 7	6-4	6-5	QT-Rfc2544Tput-Endpoint Set-1 - Flow Group 0001	98.59	98.59	2370042.1	24269.23	Tx : Rx : Loss : Loss% :	47400841 47400841 0 0.000

Trial: 1 / FS: 1280 / Iter: 7	6-5	6-4	QT-Rfc2544Tput-Endpoint Set-1 - Flow Group 0002	98.59	98.59	2370042.1	24269.23	Tx : Rx : Loss : Loss% :	47400841 47400841 0 0.000
Trial: 1 / FS: 1280 / Iter: 8	6-4	6-5	QT-Rfc2544Tput-Endpoint Set-1 - Flow Group 0001	99.30	99.30	2386944.2	24442.31	Tx : Rx : Loss : Loss% :	47738882 47738882 0 0.000
Trial: 1 / FS: 1280 / Iter: 8	6-5	6-4	QT-Rfc2544Tput-Endpoint Set-1 - Flow Group 0002	99.30	99.30	2386944.2	24442.31	Tx : Rx : Loss : Loss% :	47738882 47738882 0 0.000
Trial: 1 / FS: 1280 / Iter: 9	6-4	6-5	QT-Rfc2544Tput-Endpoint Set-1 - Flow Group 0001	100.00	100.00	2403846.2	24615.39	Tx : Rx : Loss : Loss% :	48076923 48076923 0 0.000
Trial: 1 / FS: 1280 / Iter: 9	6-5	6-4	QT-Rfc2544Tput-Endpoint Set-1 - Flow Group 0002	100.00	100.00	2403846.2	24615.39	Tx : Rx : Loss : Loss% :	48076923 48076923 0 0.000
Trial: 1 / FS: 1518 / Iter: 1	6-4	6-5	QT-Rfc2544Tput-Endpoint Set-1 - Flow Group 0001	10.00	10.00	203186.0	2467.49	Tx : Rx : Loss : Loss% :	4063719 4063719 0 0.000
Trial: 1 / FS: 1518 / Iter: 1	6-5	6-4	QT-Rfc2544Tput-Endpoint Set-1 - Flow Group 0002	10.00	10.00	203186.0	2467.49	Tx : Rx : Loss : Loss% :	4063719 4063719 0 0.000
Trial: 1 / FS: 1518 / Iter: 2	6-4	6-5	QT-Rfc2544Tput-Endpoint Set-1 - Flow Group 0001	55.00	55.00	1117522.8	13571.20	Tx : Rx : Loss : Loss% :	22350455 22350455 0 0.000
Trial: 1 / FS: 1518 / Iter: 2	6-5	6-4	QT-Rfc2544Tput-Endpoint Set-1 - Flow Group 0002	55.00	55.00	1117522.8	13571.20	Tx : Rx : Loss : Loss% :	22350455 22350455 0 0.000
Trial: 1 / FS: 1518 / Iter: 3	6-4	6-5	QT-Rfc2544Tput-Endpoint Set-1 - Flow Group 0001	77.50	77.50	1574691.2	19123.05	Tx : Rx : Loss : Loss% :	31493823 31493823 0 0.000
Trial: 1 / FS: 1518 / Iter: 3	6-5	6-4	QT-Rfc2544Tput-Endpoint Set-1 - Flow Group 0002	77.50	77.50	1574691.2	19123.05	Tx : Rx : Loss : Loss% :	31493823 31493823 0 0.000
Trial: 1 / FS: 1518 / Iter: 4	6-4	6-5	QT-Rfc2544Tput-Endpoint Set-1 - Flow Group 0001	88.75	88.75	1803275.3	21898.98	Tx : Rx : Loss : Loss% :	36065507 36065507 0 0.000
Trial: 1 / FS: 1518 / Iter: 4	6-5	6-4	QT-Rfc2544Tput-Endpoint Set-1 - Flow Group 0002	88.75	88.75	1803275.3	21898.98	Tx : Rx : Loss : Loss% :	36065507 36065507 0 0.000
Trial: 1 / FS: 1518 / Iter: 5	6-4	6-5	QT-Rfc2544Tput-Endpoint Set-1 - Flow Group 0001	94.38	94.38	1917567.4	23286.94	Tx : Rx : Loss : Loss% :	38351349 38351349 0 0.000
Trial: 1 / FS: 1518 / Iter: 5	6-5	6-4	QT-Rfc2544Tput-Endpoint Set-1 - Flow Group 0002	94.38	94.38	1917567.4	23286.94	Tx : Rx : Loss : Loss% :	38351349 38351349 0 0.000

Trial: 1 / FS: 1518 / Iter: 6	6-4	6-5	QT-Rfc2544Tput-Endpoint Set-1 - Flow Group 0001	97.19	97.19	1974713.5	23980.92	Tx : Rx : Loss : Loss% :	39494270 39494270 0 0.000
Trial: 1 / FS: 1518 / Iter: 6	6-5	6-4	QT-Rfc2544Tput-Endpoint Set-1 - Flow Group 0002	97.19	97.19	1974713.5	23980.92	Tx : Rx : Loss : Loss% :	39494270 39494270 0 0.000
Trial: 1 / FS: 1518 / Iter: 7	6-4	6-5	QT-Rfc2544Tput-Endpoint Set-1 - Flow Group 0001	98.59	98.59	2003286.6	24327.91	Tx : Rx : Loss : Loss% :	40065731 40065731 0 0.000
Trial: 1 / FS: 1518 / Iter: 7	6-5	6-4	QT-Rfc2544Tput-Endpoint Set-1 - Flow Group 0002	98.59	98.59	2003286.6	24327.91	Tx : Rx : Loss : Loss% :	40065731 40065731 0 0.000
Trial: 1 / FS: 1518 / Iter: 8	6-4	6-5	QT-Rfc2544Tput-Endpoint Set-1 - Flow Group 0001	99.30	99.30	2017573.1	24501.41	Tx : Rx : Loss : Loss% :	40351461 40351461 0 0.000
Trial: 1 / FS: 1518 / Iter: 8	6-5	6-4	QT-Rfc2544Tput-Endpoint Set-1 - Flow Group 0002	99.30	99.30	2017573.1	24501.41	Tx : Rx : Loss : Loss% :	40351461 40351461 0 0.000
Trial: 1 / FS: 1518 / Iter: 9	6-4	6-5	QT-Rfc2544Tput-Endpoint Set-1 - Flow Group 0001	100.00	100.00	2031859.5	24674.90	Tx : Rx : Loss : Loss% :	40637191 40637191 0 0.000
Trial: 1 / FS: 1518 / Iter: 9	6-5	6-4	QT-Rfc2544Tput-Endpoint Set-1 - Flow Group 0002	100.00	100.00	2031859.6	24674.90	Tx : Rx : Loss : Loss% :	40637191 40637191 0 0.000

RFC2544 - Throughput/Latency - Iteration Statistics - Part 2 of 2

Trial / Framesize / Iteration	Tx Port	Rx Port	Flow Group	Min Latency (ns)	Max Latency (ns)	Avg Latency (ns)
Trial: 1 / FS: 64 / Iter: 1	6-4	6-5	QT-Rfc2544Tput-Endpoint Set-1 - Flow Group 0001	827	860	843.00
Trial: 1 / FS: 64 / Iter: 1	6-5	6-4	QT-Rfc2544Tput-Endpoint Set-1 - Flow Group 0002	832	860	845.00
Trial: 1 / FS: 64 / Iter: 2	6-4	6-5	QT-Rfc2544Tput-Endpoint Set-1 - Flow Group 0001	827	962	843.00
Trial: 1 / FS: 64 / Iter: 2	6-5	6-4	QT-Rfc2544Tput-Endpoint Set-1 - Flow Group 0002	832	967	845.00
Trial: 1 / FS: 64 / Iter: 3	6-4	6-5	QT-Rfc2544Tput-Endpoint Set-1 - Flow Group 0001	827	987	843.00
Trial: 1 / FS: 64 / Iter: 3	6-5	6-4	QT-Rfc2544Tput-Endpoint Set-1 - Flow Group 0002	832	992	845.00
Trial: 1 / FS: 64 / Iter: 4	6-4	6-5	QT-Rfc2544Tput-Endpoint Set-1 - Flow Group 0001	827	987	843.00
Trial: 1 / FS: 64 / Iter: 4	6-5	6-4	QT-Rfc2544Tput-Endpoint Set-1 - Flow Group 0002	832	985	846.00
Trial: 1 / FS: 64 / Iter: 5	6-4	6-5	QT-Rfc2544Tput-Endpoint Set-1 - Flow Group 0001	830	980	844.00
Trial: 1 / FS: 64 / Iter: 5	6-5	6-4	QT-Rfc2544Tput-Endpoint Set-1 - Flow Group 0002	835	992	848.00
Trial: 1 / FS: 64 / Iter: 6	6-4	6-5	QT-Rfc2544Tput-Endpoint Set-1 - Flow Group 0001	832	992	845.00
Trial: 1 / FS: 64 / Iter: 6	6-5	6-4	QT-Rfc2544Tput-Endpoint Set-1 - Flow Group 0002	837	1002	849.00
Trial: 1 / FS: 64 / Iter: 7	6-4	6-5	QT-Rfc2544Tput-Endpoint Set-1 - Flow Group 0001	835	987	846.00
Trial: 1 / FS: 64 / Iter: 7	6-5	6-4	QT-Rfc2544Tput-Endpoint Set-1 - Flow Group 0002	840	1000	850.00
Trial: 1 / FS: 64 / Iter: 8	6-4	6-5	QT-Rfc2544Tput-Endpoint Set-1 - Flow Group 0001	837	990	847.00
Trial: 1 / FS: 64 / Iter: 8	6-5	6-4	QT-Rfc2544Tput-Endpoint Set-1 - Flow Group 0002	840	992	851.00
Trial: 1 / FS: 64 / Iter: 9	6-4	6-5	QT-Rfc2544Tput-Endpoint Set-1 - Flow Group 0001	847	997	857.00
Trial: 1 / FS: 64 / Iter: 9	6-5	6-4	QT-Rfc2544Tput-Endpoint Set-1 - Flow Group 0002	847	992	855.00
Trial: 1 / FS: 128 / Iter: 1	6-4	6-5	QT-Rfc2544Tput-Endpoint Set-1 - Flow Group 0001	830	897	841.00

Trial: 1 / FS: 128 / Iter: 1	6-5	6-4	QT-Rfc2544Tput-Endpoint Set-1 - Flow Group 0002	832	860	844.00
Trial: 1 / FS: 128 / Iter: 2	6-4	6-5	QT-Rfc2544Tput-Endpoint Set-1 - Flow Group 0001	827	985	840.00
Trial: 1 / FS: 128 / Iter: 2	6-5	6-4	QT-Rfc2544Tput-Endpoint Set-1 - Flow Group 0002	832	862	846.00
Trial: 1 / FS: 128 / Iter: 3	6-4	6-5	QT-Rfc2544Tput-Endpoint Set-1 - Flow Group 0001	827	977	840.00
Trial: 1 / FS: 128 / Iter: 3	6-5	6-4	QT-Rfc2544Tput-Endpoint Set-1 - Flow Group 0002	832	862	846.00
Trial: 1 / FS: 128 / Iter: 4	6-4	6-5	QT-Rfc2544Tput-Endpoint Set-1 - Flow Group 0001	830	972	842.00
Trial: 1 / FS: 128 / Iter: 4	6-5	6-4	QT-Rfc2544Tput-Endpoint Set-1 - Flow Group 0002	832	860	845.00
Trial: 1 / FS: 128 / Iter: 5	6-4	6-5	QT-Rfc2544Tput-Endpoint Set-1 - Flow Group 0001	830	977	842.00
Trial: 1 / FS: 128 / Iter: 5	6-5	6-4	QT-Rfc2544Tput-Endpoint Set-1 - Flow Group 0002	835	862	847.00
Trial: 1 / FS: 128 / Iter: 6	6-4	6-5	QT-Rfc2544Tput-Endpoint Set-1 - Flow Group 0001	830	987	844.00
Trial: 1 / FS: 128 / Iter: 6	6-5	6-4	QT-Rfc2544Tput-Endpoint Set-1 - Flow Group 0002	835	862	846.00
Trial: 1 / FS: 128 / Iter: 7	6-4	6-5	QT-Rfc2544Tput-Endpoint Set-1 - Flow Group 0001	832	990	844.00
Trial: 1 / FS: 128 / Iter: 7	6-5	6-4	QT-Rfc2544Tput-Endpoint Set-1 - Flow Group 0002	837	862	850.00
Trial: 1 / FS: 128 / Iter: 8	6-4	6-5	QT-Rfc2544Tput-Endpoint Set-1 - Flow Group 0001	835	992	847.00
Trial: 1 / FS: 128 / Iter: 8	6-5	6-4	QT-Rfc2544Tput-Endpoint Set-1 - Flow Group 0002	840	860	848.00
Trial: 1 / FS: 128 / Iter: 9	6-4	6-5	QT-Rfc2544Tput-Endpoint Set-1 - Flow Group 0001	837	990	852.00
Trial: 1 / FS: 128 / Iter: 9	6-5	6-4	QT-Rfc2544Tput-Endpoint Set-1 - Flow Group 0002	842	862	855.00
Trial: 1 / FS: 256 / Iter: 1	6-4	6-5	QT-Rfc2544Tput-Endpoint Set-1 - Flow Group 0001	817	847	831.00
Trial: 1 / FS: 256 / Iter: 1	6-5	6-4	QT-Rfc2544Tput-Endpoint Set-1 - Flow Group 0002	825	852	838.00
Trial: 1 / FS: 256 / Iter: 2	6-4	6-5	QT-Rfc2544Tput-Endpoint Set-1 - Flow Group 0001	817	960	831.00
Trial: 1 / FS: 256 / Iter: 2	6-5	6-4	QT-Rfc2544Tput-Endpoint Set-1 - Flow Group 0002	825	852	838.00

Trial: 1 / FS: 256 / Iter: 3	6-4	6-5	QT-Rfc2544Tput-Endpoint Set-1 - Flow Group 0001	817	942	832.00
Trial: 1 / FS: 256 / Iter: 3	6-5	6-4	QT-Rfc2544Tput-Endpoint Set-1 - Flow Group 0002	825	850	835.00
Trial: 1 / FS: 256 / Iter: 4	6-4	6-5	QT-Rfc2544Tput-Endpoint Set-1 - Flow Group 0001	817	962	832.00
Trial: 1 / FS: 256 / Iter: 4	6-5	6-4	QT-Rfc2544Tput-Endpoint Set-1 - Flow Group 0002	825	972	835.00
Trial: 1 / FS: 256 / Iter: 5	6-4	6-5	QT-Rfc2544Tput-Endpoint Set-1 - Flow Group 0001	817	847	833.00
Trial: 1 / FS: 256 / Iter: 5	6-5	6-4	QT-Rfc2544Tput-Endpoint Set-1 - Flow Group 0002	825	975	835.00
Trial: 1 / FS: 256 / Iter: 6	6-4	6-5	QT-Rfc2544Tput-Endpoint Set-1 - Flow Group 0001	820	847	834.00
Trial: 1 / FS: 256 / Iter: 6	6-5	6-4	QT-Rfc2544Tput-Endpoint Set-1 - Flow Group 0002	825	977	836.00
Trial: 1 / FS: 256 / Iter: 7	6-4	6-5	QT-Rfc2544Tput-Endpoint Set-1 - Flow Group 0001	822	847	833.00
Trial: 1 / FS: 256 / Iter: 7	6-5	6-4	QT-Rfc2544Tput-Endpoint Set-1 - Flow Group 0002	830	982	841.00
Trial: 1 / FS: 256 / Iter: 8	6-4	6-5	QT-Rfc2544Tput-Endpoint Set-1 - Flow Group 0001	822	847	835.00
Trial: 1 / FS: 256 / Iter: 8	6-5	6-4	QT-Rfc2544Tput-Endpoint Set-1 - Flow Group 0002	830	987	842.00
Trial: 1 / FS: 256 / Iter: 9	6-4	6-5	QT-Rfc2544Tput-Endpoint Set-1 - Flow Group 0001	832	847	840.00
Trial: 1 / FS: 256 / Iter: 9	6-5	6-4	QT-Rfc2544Tput-Endpoint Set-1 - Flow Group 0002	832	992	848.00
Trial: 1 / FS: 512 / Iter: 1	6-4	6-5	QT-Rfc2544Tput-Endpoint Set-1 - Flow Group 0001	742	770	754.00
Trial: 1 / FS: 512 / Iter: 1	6-5	6-4	QT-Rfc2544Tput-Endpoint Set-1 - Flow Group 0002	747	775	761.00
Trial: 1 / FS: 512 / Iter: 2	6-4	6-5	QT-Rfc2544Tput-Endpoint Set-1 - Flow Group 0001	742	772	755.00
Trial: 1 / FS: 512 / Iter: 2	6-5	6-4	QT-Rfc2544Tput-Endpoint Set-1 - Flow Group 0002	742	895	758.00
Trial: 1 / FS: 512 / Iter: 3	6-4	6-5	QT-Rfc2544Tput-Endpoint Set-1 - Flow Group 0001	742	772	754.00
Trial: 1 / FS: 512 / Iter: 3	6-5	6-4	QT-Rfc2544Tput-Endpoint Set-1 - Flow Group 0002	745	847	761.00
Trial: 1 / FS: 512 / Iter: 4	6-4	6-5	QT-Rfc2544Tput-Endpoint Set-1 - Flow Group 0001	740	772	754.00

Trial: 1 / FS: 512 / Iter: 4	6-5	6-4	QT-Rfc2544Tput-Endpoint Set-1 - Flow Group 0002	745	875	761.00
Trial: 1 / FS: 512 / Iter: 5	6-4	6-5	QT-Rfc2544Tput-Endpoint Set-1 - Flow Group 0001	740	772	754.00
Trial: 1 / FS: 512 / Iter: 5	6-5	6-4	QT-Rfc2544Tput-Endpoint Set-1 - Flow Group 0002	745	887	761.00
Trial: 1 / FS: 512 / Iter: 6	6-4	6-5	QT-Rfc2544Tput-Endpoint Set-1 - Flow Group 0001	742	772	756.00
Trial: 1 / FS: 512 / Iter: 6	6-5	6-4	QT-Rfc2544Tput-Endpoint Set-1 - Flow Group 0002	742	895	759.00
Trial: 1 / FS: 512 / Iter: 7	6-4	6-5	QT-Rfc2544Tput-Endpoint Set-1 - Flow Group 0001	745	890	755.00
Trial: 1 / FS: 512 / Iter: 7	6-5	6-4	QT-Rfc2544Tput-Endpoint Set-1 - Flow Group 0002	750	900	763.00
Trial: 1 / FS: 512 / Iter: 8	6-4	6-5	QT-Rfc2544Tput-Endpoint Set-1 - Flow Group 0001	745	897	759.00
Trial: 1 / FS: 512 / Iter: 8	6-5	6-4	QT-Rfc2544Tput-Endpoint Set-1 - Flow Group 0002	750	905	760.00
Trial: 1 / FS: 512 / Iter: 9	6-4	6-5	QT-Rfc2544Tput-Endpoint Set-1 - Flow Group 0001	747	912	767.00
Trial: 1 / FS: 512 / Iter: 9	6-5	6-4	QT-Rfc2544Tput-Endpoint Set-1 - Flow Group 0002	760	912	771.00
Trial: 1 / FS: 1024 / Iter: 1	6-4	6-5	QT-Rfc2544Tput-Endpoint Set-1 - Flow Group 0001	585	617	600.00
Trial: 1 / FS: 1024 / Iter: 1	6-5	6-4	QT-Rfc2544Tput-Endpoint Set-1 - Flow Group 0002	590	622	606.00
Trial: 1 / FS: 1024 / Iter: 2	6-4	6-5	QT-Rfc2544Tput-Endpoint Set-1 - Flow Group 0001	590	687	601.00
Trial: 1 / FS: 1024 / Iter: 2	6-5	6-4	QT-Rfc2544Tput-Endpoint Set-1 - Flow Group 0002	590	617	603.00
Trial: 1 / FS: 1024 / Iter: 3	6-4	6-5	QT-Rfc2544Tput-Endpoint Set-1 - Flow Group 0001	590	645	601.00
Trial: 1 / FS: 1024 / Iter: 3	6-5	6-4	QT-Rfc2544Tput-Endpoint Set-1 - Flow Group 0002	590	645	603.00
Trial: 1 / FS: 1024 / Iter: 4	6-4	6-5	QT-Rfc2544Tput-Endpoint Set-1 - Flow Group 0001	585	690	600.00
Trial: 1 / FS: 1024 / Iter: 4	6-5	6-4	QT-Rfc2544Tput-Endpoint Set-1 - Flow Group 0002	590	700	606.00
Trial: 1 / FS: 1024 / Iter: 5	6-4	6-5	QT-Rfc2544Tput-Endpoint Set-1 - Flow Group 0001	590	727	601.00
Trial: 1 / FS: 1024 / Iter: 5	6-5	6-4	QT-Rfc2544Tput-Endpoint Set-1 - Flow Group 0002	590	617	603.00

Trial: 1 / FS: 1024 / Iter: 6	6-4	6-5	QT-Rfc2544Tput-Endpoint Set-1 - Flow Group 0001	585	725	600.00
Trial: 1 / FS: 1024 / Iter: 6	6-5	6-4	QT-Rfc2544Tput-Endpoint Set-1 - Flow Group 0002	590	622	607.00
Trial: 1 / FS: 1024 / Iter: 7	6-4	6-5	QT-Rfc2544Tput-Endpoint Set-1 - Flow Group 0001	590	740	602.00
Trial: 1 / FS: 1024 / Iter: 7	6-5	6-4	QT-Rfc2544Tput-Endpoint Set-1 - Flow Group 0002	590	617	604.00
Trial: 1 / FS: 1024 / Iter: 8	6-4	6-5	QT-Rfc2544Tput-Endpoint Set-1 - Flow Group 0001	587	737	602.00
Trial: 1 / FS: 1024 / Iter: 8	6-5	6-4	QT-Rfc2544Tput-Endpoint Set-1 - Flow Group 0002	592	622	608.00
Trial: 1 / FS: 1024 / Iter: 9	6-4	6-5	QT-Rfc2544Tput-Endpoint Set-1 - Flow Group 0001	595	755	612.00
Trial: 1 / FS: 1024 / Iter: 9	6-5	6-4	QT-Rfc2544Tput-Endpoint Set-1 - Flow Group 0002	602	617	610.00
Trial: 1 / FS: 1280 / Iter: 1	6-4	6-5	QT-Rfc2544Tput-Endpoint Set-1 - Flow Group 0001	510	537	525.00
Trial: 1 / FS: 1280 / Iter: 1	6-5	6-4	QT-Rfc2544Tput-Endpoint Set-1 - Flow Group 0002	515	547	532.00
Trial: 1 / FS: 1280 / Iter: 2	6-4	6-5	QT-Rfc2544Tput-Endpoint Set-1 - Flow Group 0001	515	545	527.00
Trial: 1 / FS: 1280 / Iter: 2	6-5	6-4	QT-Rfc2544Tput-Endpoint Set-1 - Flow Group 0002	515	545	528.00
Trial: 1 / FS: 1280 / Iter: 3	6-4	6-5	QT-Rfc2544Tput-Endpoint Set-1 - Flow Group 0001	515	547	527.00
Trial: 1 / FS: 1280 / Iter: 3	6-5	6-4	QT-Rfc2544Tput-Endpoint Set-1 - Flow Group 0002	515	545	528.00
Trial: 1 / FS: 1280 / Iter: 4	6-4	6-5	QT-Rfc2544Tput-Endpoint Set-1 - Flow Group 0001	515	615	527.00
Trial: 1 / FS: 1280 / Iter: 4	6-5	6-4	QT-Rfc2544Tput-Endpoint Set-1 - Flow Group 0002	515	545	528.00
Trial: 1 / FS: 1280 / Iter: 5	6-4	6-5	QT-Rfc2544Tput-Endpoint Set-1 - Flow Group 0001	510	642	526.00
Trial: 1 / FS: 1280 / Iter: 5	6-5	6-4	QT-Rfc2544Tput-Endpoint Set-1 - Flow Group 0002	515	547	531.00
Trial: 1 / FS: 1280 / Iter: 6	6-4	6-5	QT-Rfc2544Tput-Endpoint Set-1 - Flow Group 0001	510	657	526.00
Trial: 1 / FS: 1280 / Iter: 6	6-5	6-4	QT-Rfc2544Tput-Endpoint Set-1 - Flow Group 0002	515	550	531.00
Trial: 1 / FS: 1280 / Iter: 7	6-4	6-5	QT-Rfc2544Tput-Endpoint Set-1 - Flow Group 0001	510	665	526.00

Trial: 1 / FS: 1280 / Iter: 7	6-5	6-4	QT-Rfc2544Tput-Endpoint Set-1 - Flow Group 0002	515	675	532.00
Trial: 1 / FS: 1280 / Iter: 8	6-4	6-5	QT-Rfc2544Tput-Endpoint Set-1 - Flow Group 0001	517	545	528.00
Trial: 1 / FS: 1280 / Iter: 8	6-5	6-4	QT-Rfc2544Tput-Endpoint Set-1 - Flow Group 0002	515	665	529.00
Trial: 1 / FS: 1280 / Iter: 9	6-4	6-5	QT-Rfc2544Tput-Endpoint Set-1 - Flow Group 0001	532	545	538.00
Trial: 1 / FS: 1280 / Iter: 9	6-5	6-4	QT-Rfc2544Tput-Endpoint Set-1 - Flow Group 0002	525	677	540.00
Trial: 1 / FS: 1518 / Iter: 1	6-4	6-5	QT-Rfc2544Tput-Endpoint Set-1 - Flow Group 0001	437	467	453.00
Trial: 1 / FS: 1518 / Iter: 1	6-5	6-4	QT-Rfc2544Tput-Endpoint Set-1 - Flow Group 0002	445	477	459.00
Trial: 1 / FS: 1518 / Iter: 2	6-4	6-5	QT-Rfc2544Tput-Endpoint Set-1 - Flow Group 0001	440	472	455.00
Trial: 1 / FS: 1518 / Iter: 2	6-5	6-4	QT-Rfc2544Tput-Endpoint Set-1 - Flow Group 0002	442	472	456.00
Trial: 1 / FS: 1518 / Iter: 3	6-4	6-5	QT-Rfc2544Tput-Endpoint Set-1 - Flow Group 0001	437	467	453.00
Trial: 1 / FS: 1518 / Iter: 3	6-5	6-4	QT-Rfc2544Tput-Endpoint Set-1 - Flow Group 0002	442	477	459.00
Trial: 1 / FS: 1518 / Iter: 4	6-4	6-5	QT-Rfc2544Tput-Endpoint Set-1 - Flow Group 0001	437	467	453.00
Trial: 1 / FS: 1518 / Iter: 4	6-5	6-4	QT-Rfc2544Tput-Endpoint Set-1 - Flow Group 0002	442	545	459.00
Trial: 1 / FS: 1518 / Iter: 5	6-4	6-5	QT-Rfc2544Tput-Endpoint Set-1 - Flow Group 0001	437	467	453.00
Trial: 1 / FS: 1518 / Iter: 5	6-5	6-4	QT-Rfc2544Tput-Endpoint Set-1 - Flow Group 0002	445	572	459.00
Trial: 1 / FS: 1518 / Iter: 6	6-4	6-5	QT-Rfc2544Tput-Endpoint Set-1 - Flow Group 0001	440	472	455.00
Trial: 1 / FS: 1518 / Iter: 6	6-5	6-4	QT-Rfc2544Tput-Endpoint Set-1 - Flow Group 0002	445	575	456.00
Trial: 1 / FS: 1518 / Iter: 7	6-4	6-5	QT-Rfc2544Tput-Endpoint Set-1 - Flow Group 0001	437	467	454.00
Trial: 1 / FS: 1518 / Iter: 7	6-5	6-4	QT-Rfc2544Tput-Endpoint Set-1 - Flow Group 0002	445	597	460.00
Trial: 1 / FS: 1518 / Iter: 8	6-4	6-5	QT-Rfc2544Tput-Endpoint Set-1 - Flow Group 0001	442	472	456.00
Trial: 1 / FS: 1518 / Iter: 8	6-5	6-4	QT-Rfc2544Tput-Endpoint Set-1 - Flow Group 0002	445	597	457.00

Trial: 1 / FS: 1518 / Iter: 9	6-4	6-5	QT-Rfc2544Tput-Endpoint Set-1 - Flow Group 0001	457	607	468.00
Trial: 1 / FS: 1518 / Iter: 9	6-5	6-4	QT-Rfc2544Tput-Endpoint Set-1 - Flow Group 0002	455	610	469.00

Theoretical maximum Frame Rates (frames/second) for different frame sizes (bytes)

Speed	64	128	256	512	1024	1280	1518
10 Mbps	14881	8446	4529	2350	1198	962	813
100 Mbps	148810	84460	45290	23497	11973	9616	8128
1000 Mbps	1488096	844595	452899	234963	119732	96154	81275
10 Gbps	14880952	8445946	4528986	2349625	1197318	961539	812744
25 Gbps	37202380	21114864	11322463	5874060	2993295	2403846	2031859
40 Gbps	59523809	33783783	18115942	9398496	4789272	3846153	3250975
100 Gbps	148809523	84459459	45289855	23496240	11973180	9615384	8127438
155 Mbps (Oc - 3)	288000	145116	72840	36491	18263	14614	12324
622 Mbps (Oc - 12)	1152000	580465	291362	145965	73054	58454	49296
2488 Mbps (Oc - 48)	4608000	2321860	1165447	583860	292215	233817	197182
9952 Mbps (Oc - 192)	18432000	9287442	4661790	2335439	1168859	935270	788730