



## **IxNetwork Report**

**Test: RFC2544 - Throughput/Latency**

**Test Date: 08/20/2020 17:13:33**

[www.ixiacom.com](http://www.ixiacom.com)  
[www.ixiacom.com/support](http://www.ixiacom.com/support)

## Table of Contents

1.	Cover	1
2.	Info	3
3.	Port Map	4
4.	Aggregate Graphs	5
5.	IterationCharts	13
6.	Aggregated Results	19
7.	Aggregated Results Per Iteration	20
8.	Per Flow Results	25
9.	Iteration Data	27
10.	Theoretical Max Rates	43

**RFC2544 - Throughput/Latency - Info****Test Information****Product Information**

Product Label :	N5860-48SC
Product Version :	N8560-48SC Switch FSOS 11.0.5 B9P66S2
Serial Number :	G1P505C002022
Comments :	

**Test Settings**

Date Executed :	08/20/2020
Time Executed :	17:13:3
User Name :	
Number of Trials Executed :	1
Stream Duration (sec) :	20

**Output Parameters**

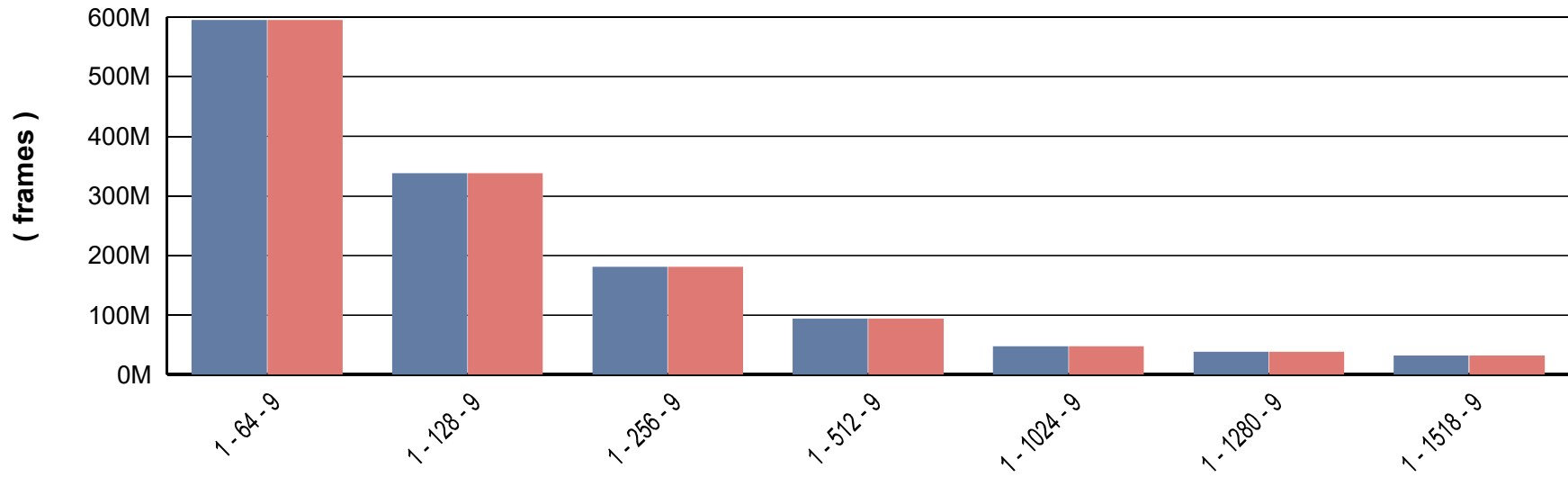
Number of Trials Passed :	N/A
Test Duration :	00:36:37

**RFC2544 - Throughput/Latency - Port Map Information**

Port Map :	Tx Port	Tx Speed (Mbps)	Rx Port	Rx Speed (Mbps)
	10.32.133.101:3:11	10000	10.32.133.101:3:12	10000
	10.32.133.101:3:12	10000	10.32.133.101:3:11	10000

RFC2544 - Throughput/Latency - Aggregated Graph

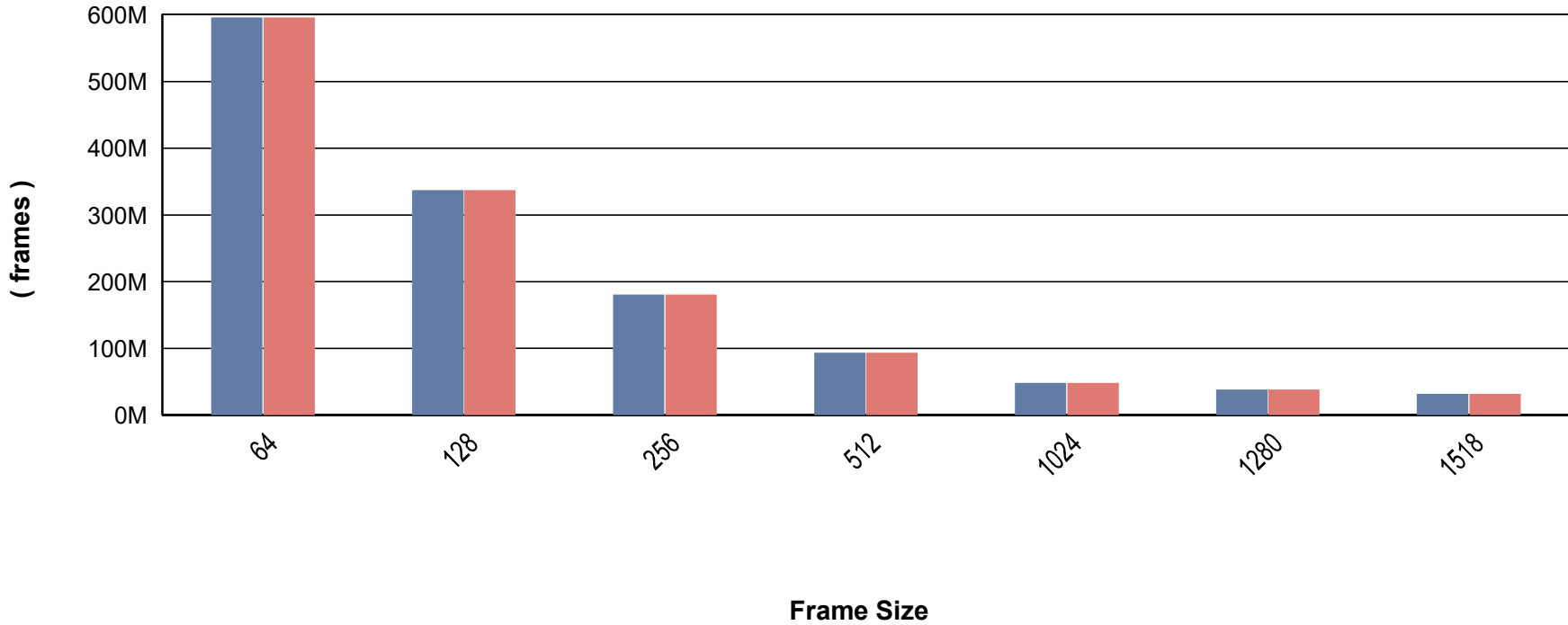
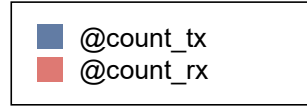
# Total Frames Transmitted and Received



Trial - Framesize - Iteration

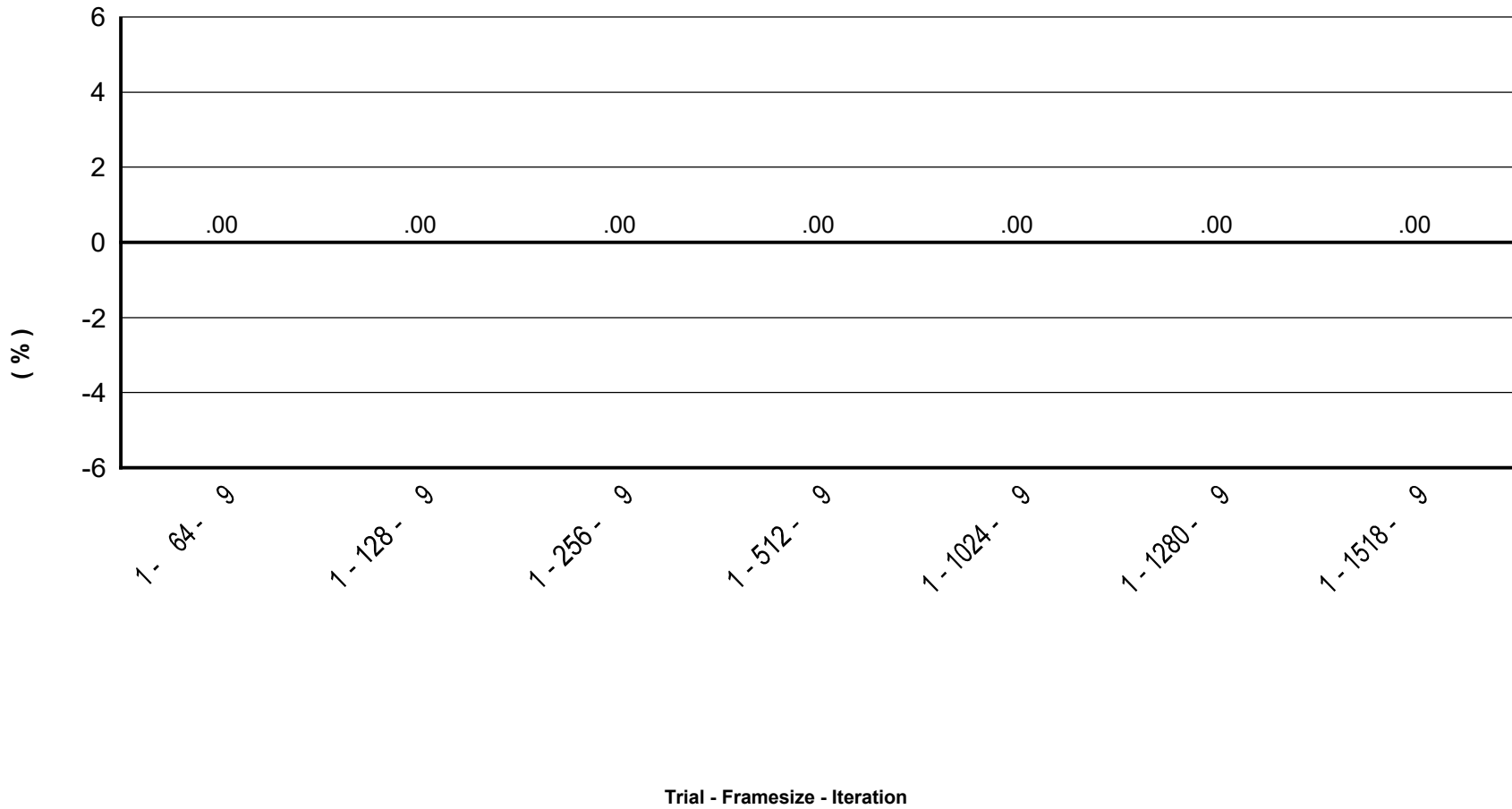
RFC2544 - Throughput/Latency - Aggregated Graph

### Tx / Rx Frames per Frame Size



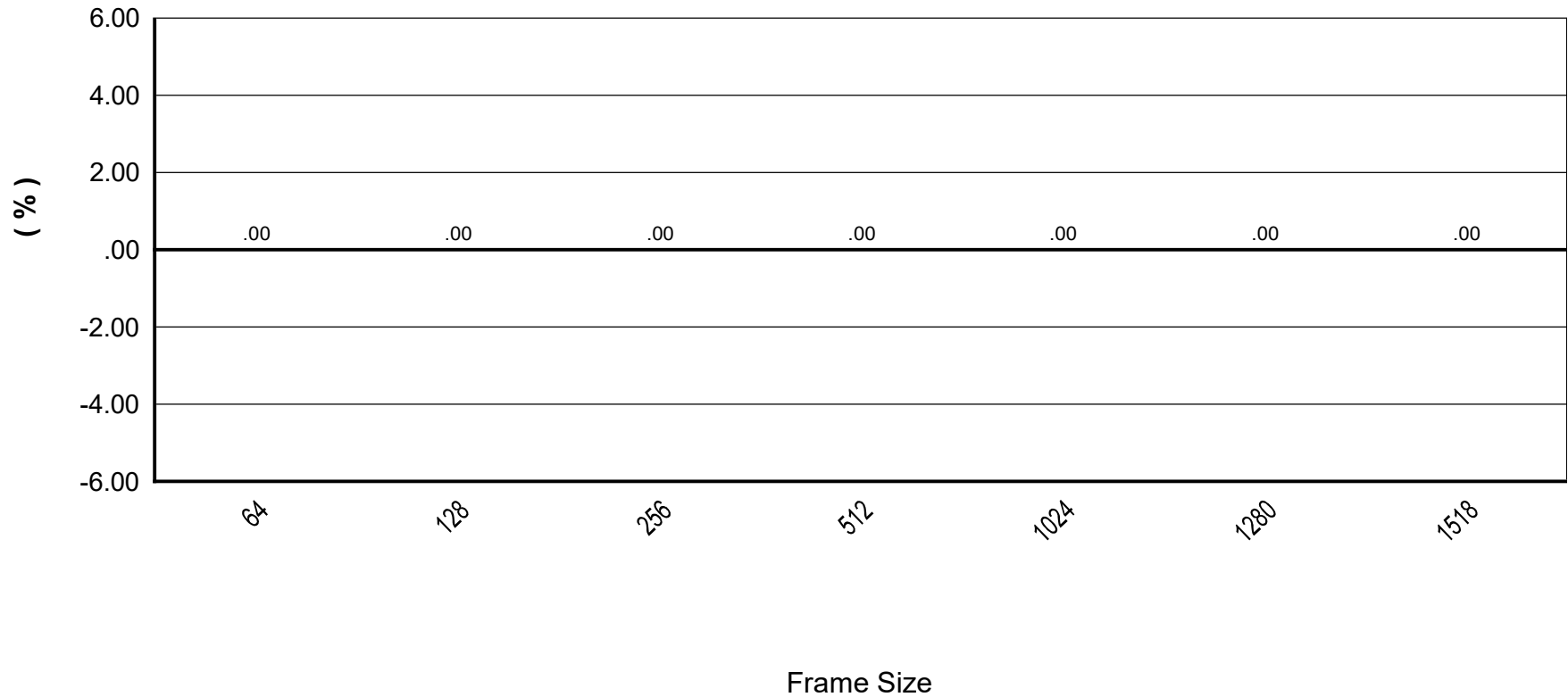
**RFC2544 - Throughput/Latency - Aggregated Graph**

### Aggregated Frame Loss



**RFC2544 - Throughput/Latency - Aggregated Graph**

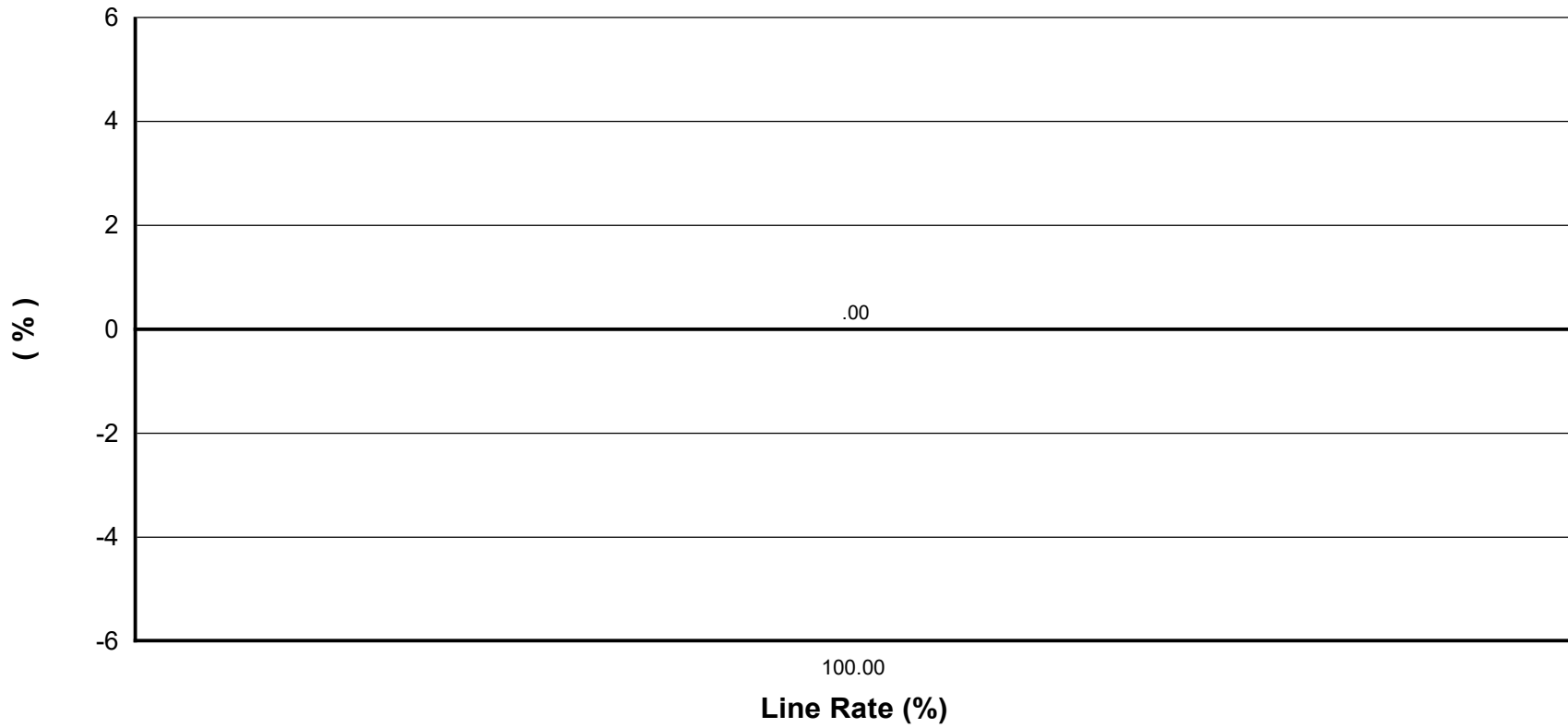
### Aggregated Frame Loss per Frame Size





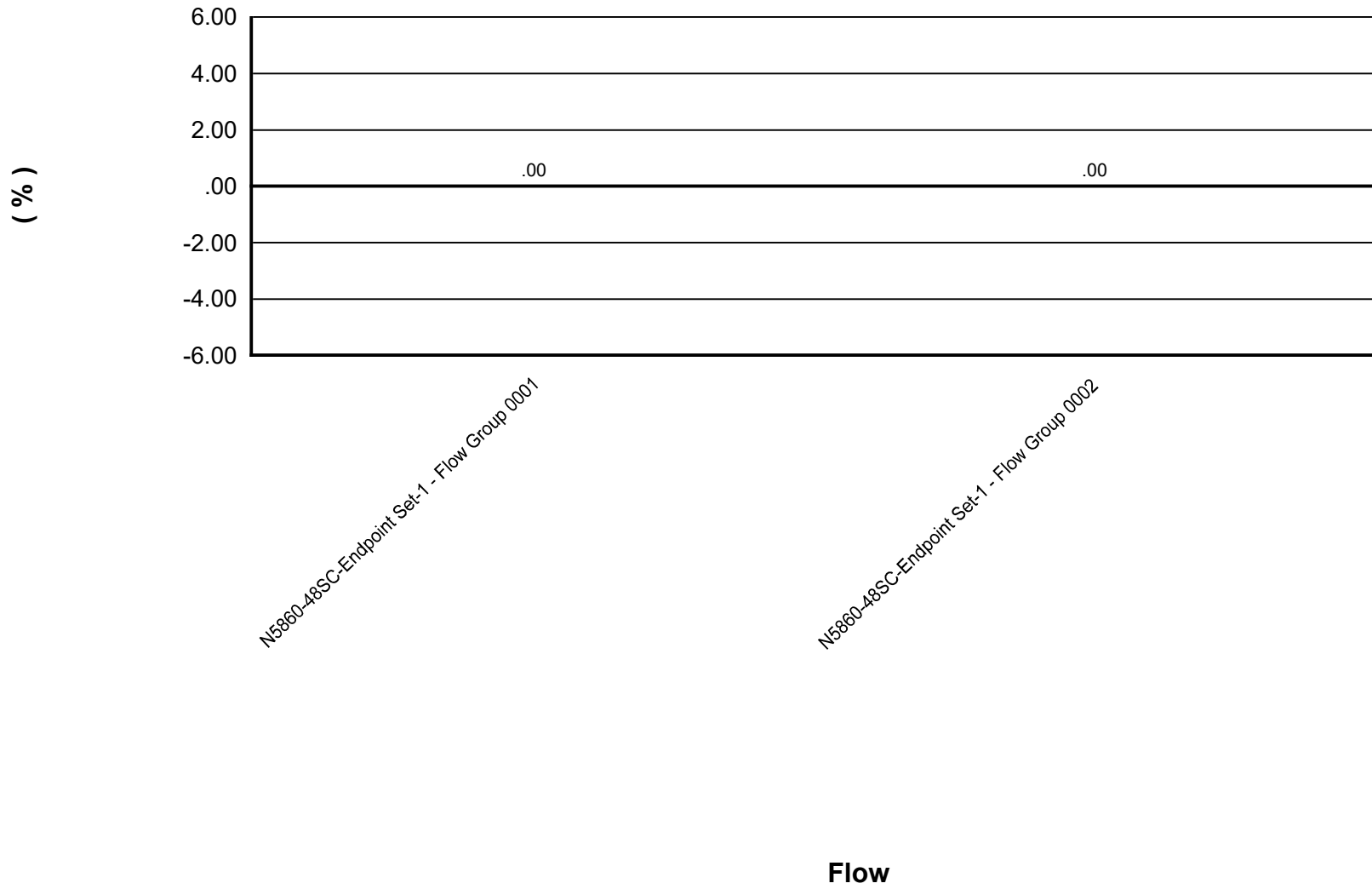
**RFC2544 - Throughput/Latency - Aggregated Graph**

### Aggregated Frame Loss per Line Rate



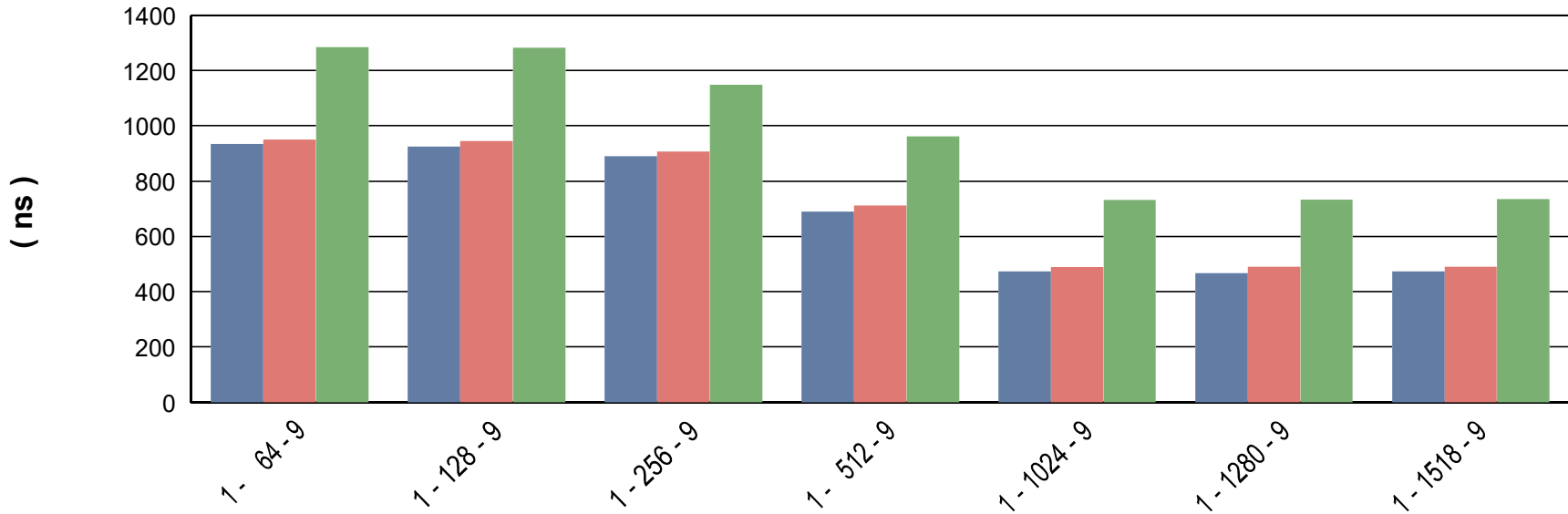
**RFC2544 - Throughput/Latency - Per Flow Graph**

### Average Frame Loss per Flow



RFC2544 - Throughput/Latency - Aggregated Graph

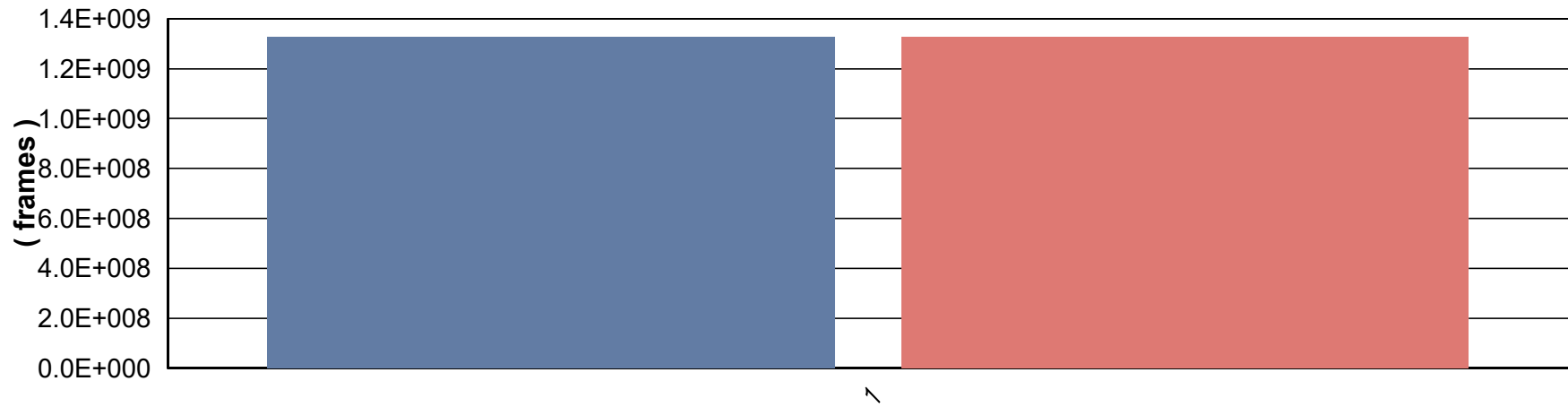
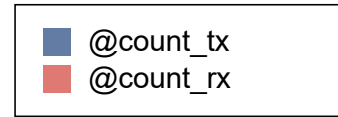
### Aggregated Latency



Trial - Framesize - Iteration

RFC2544 - Throughput/Latency - Per Flow Graph

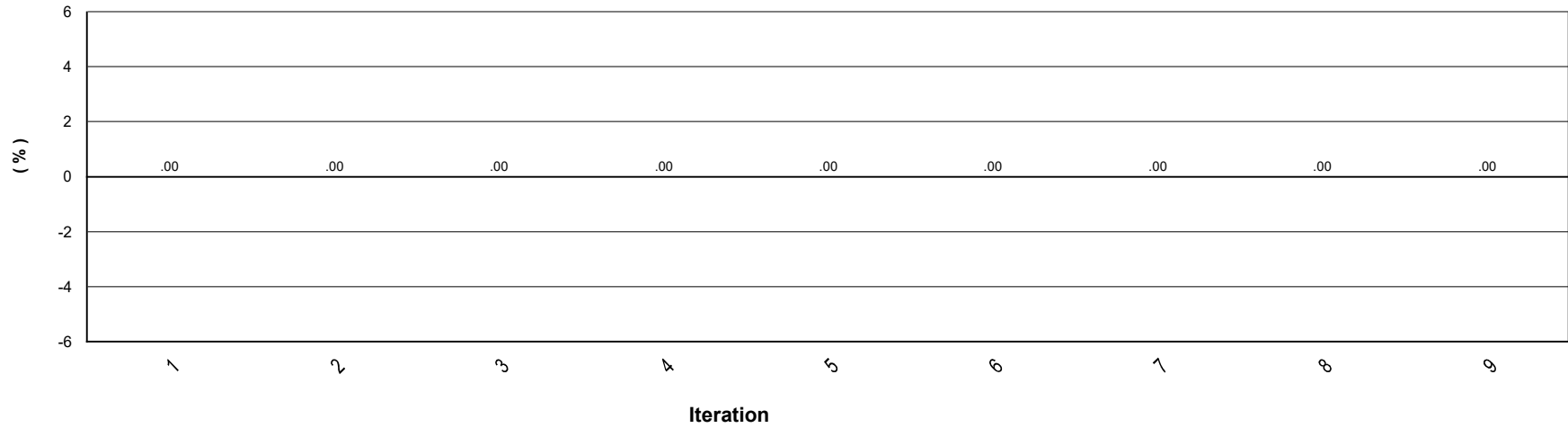
# Tx / Rx Frame Count



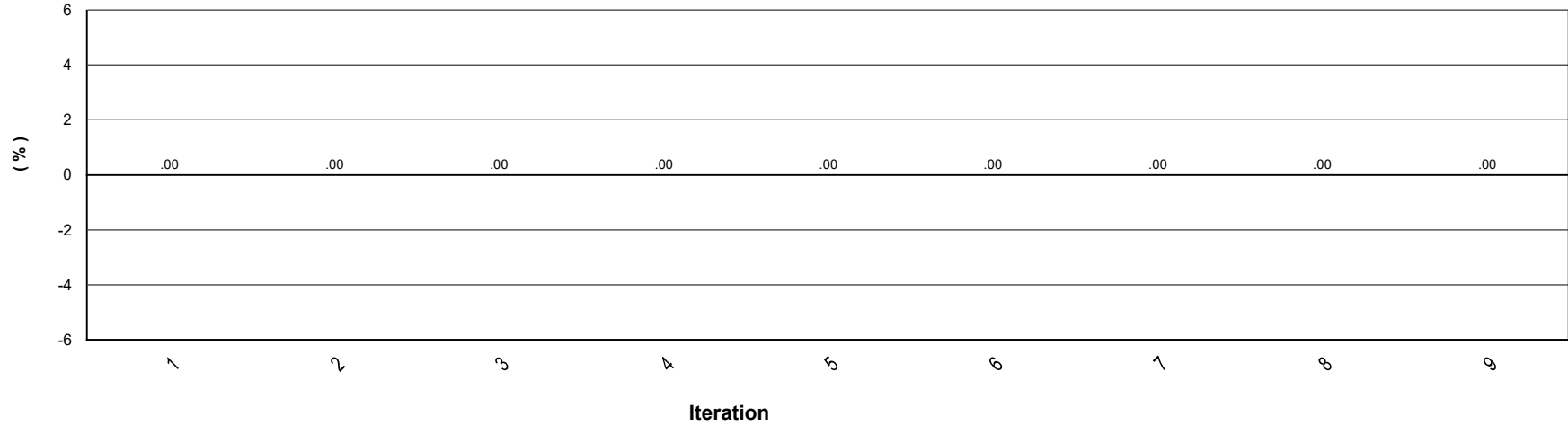
Trial

**RFC2544 - Throughput/Latency - Iteration Graph**

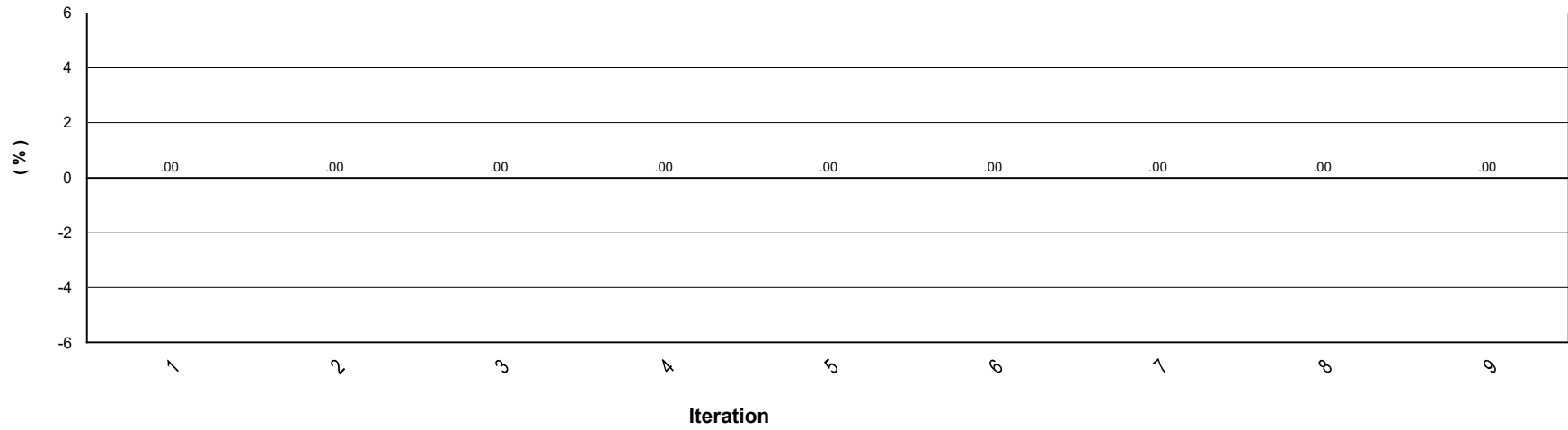
**Aggregated Frame Loss for Trial 1 and Framesize 64**



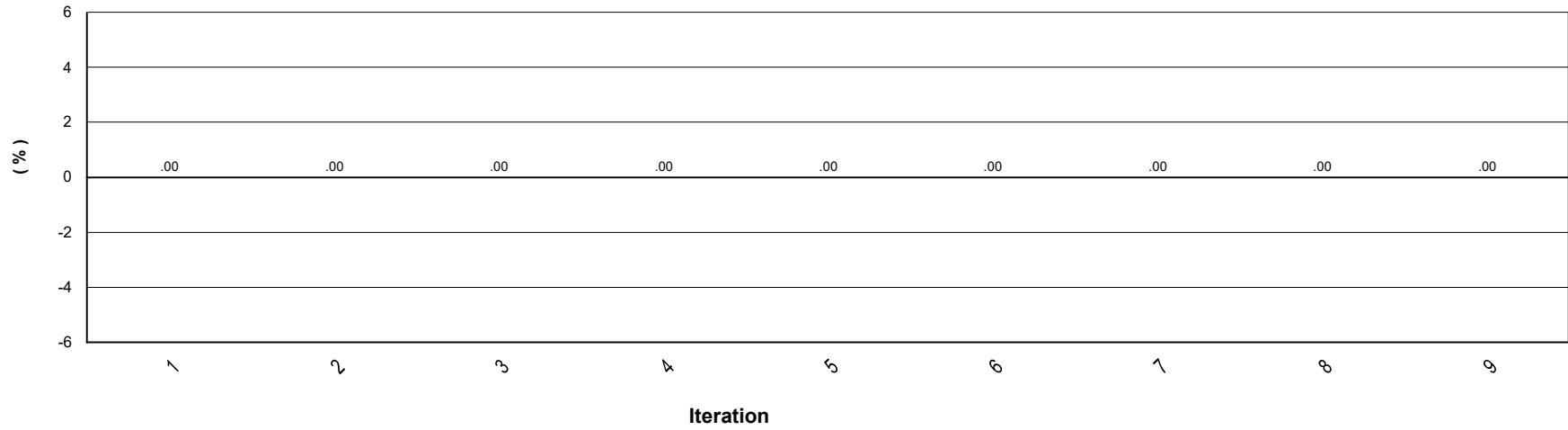
**Aggregated Frame Loss for Trial 1 and Framesize 128**



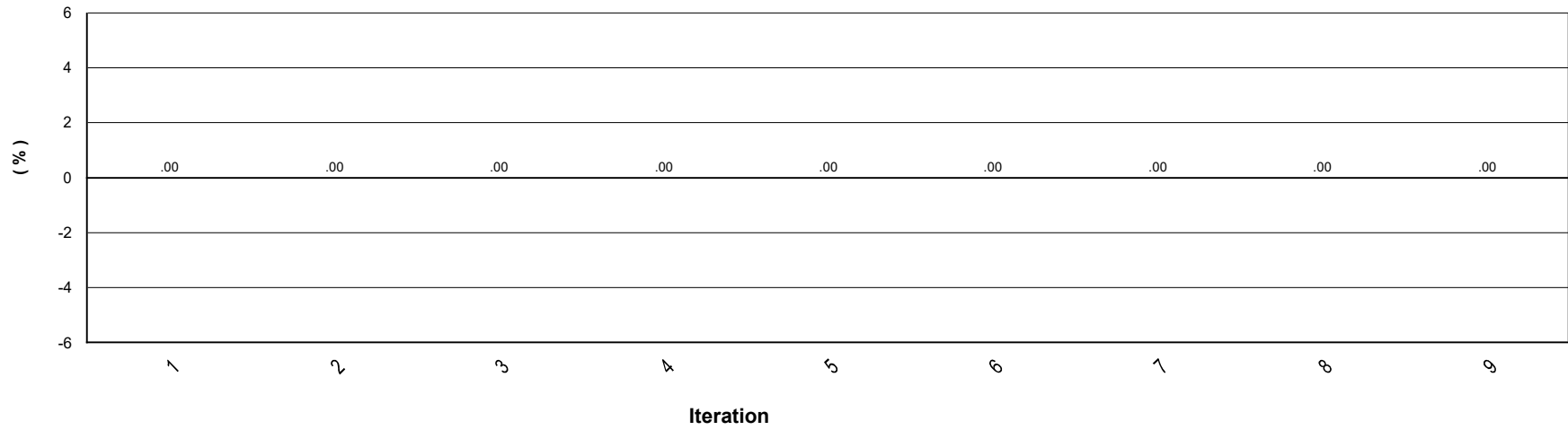
### Aggregated Frame Loss for Trial 1 and Framesize 256



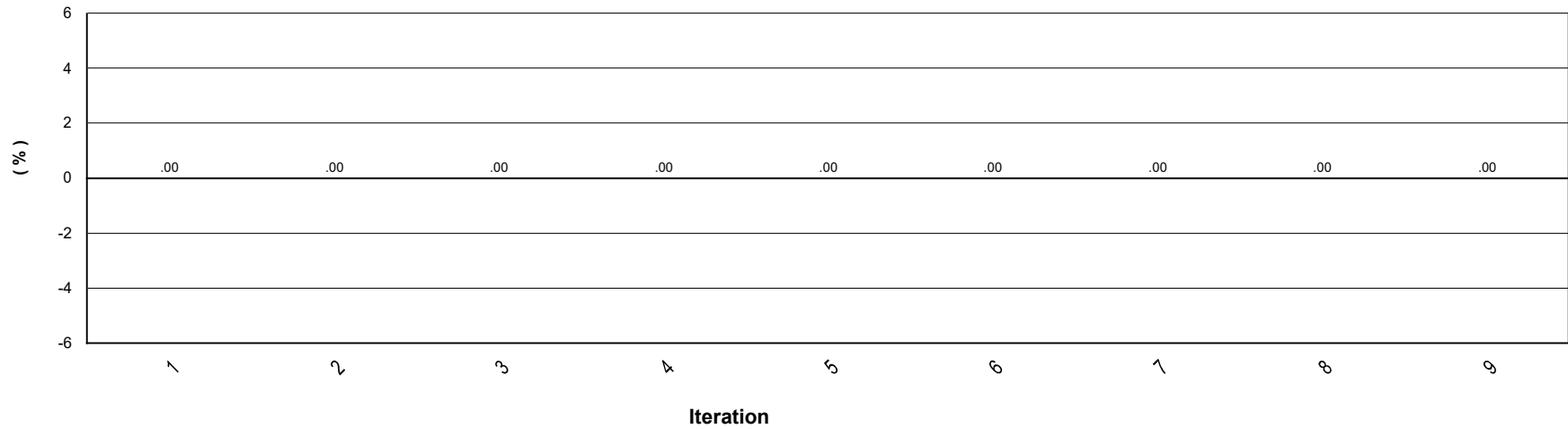
### Aggregated Frame Loss for Trial 1 and Framesize 512



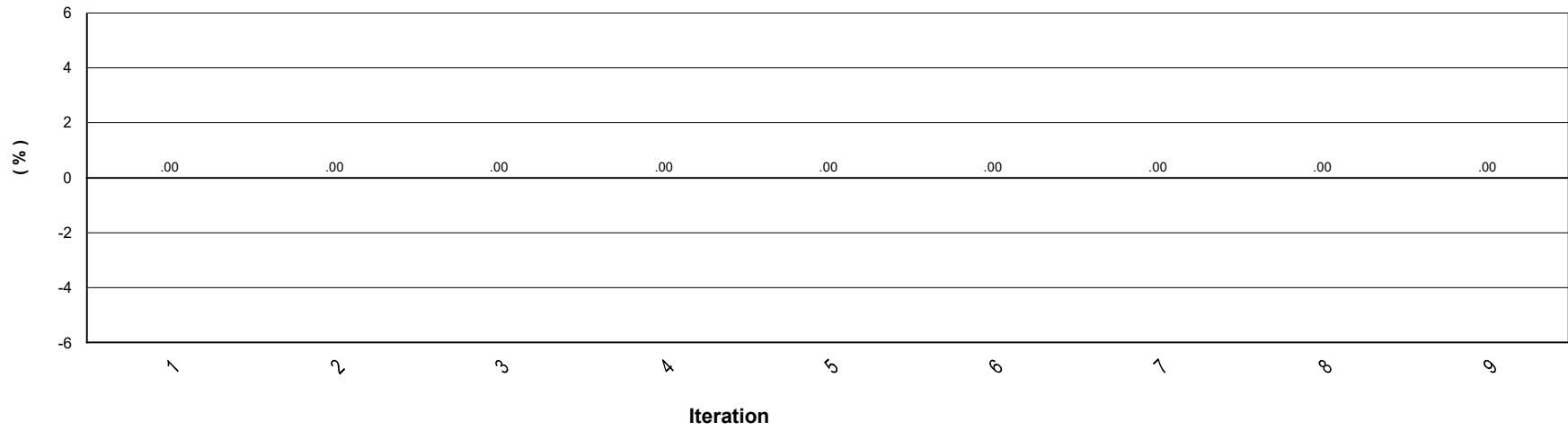
### Aggregated Frame Loss for Trial 1 and Framesize 1024



### Aggregated Frame Loss for Trial 1 and Framesize 1280



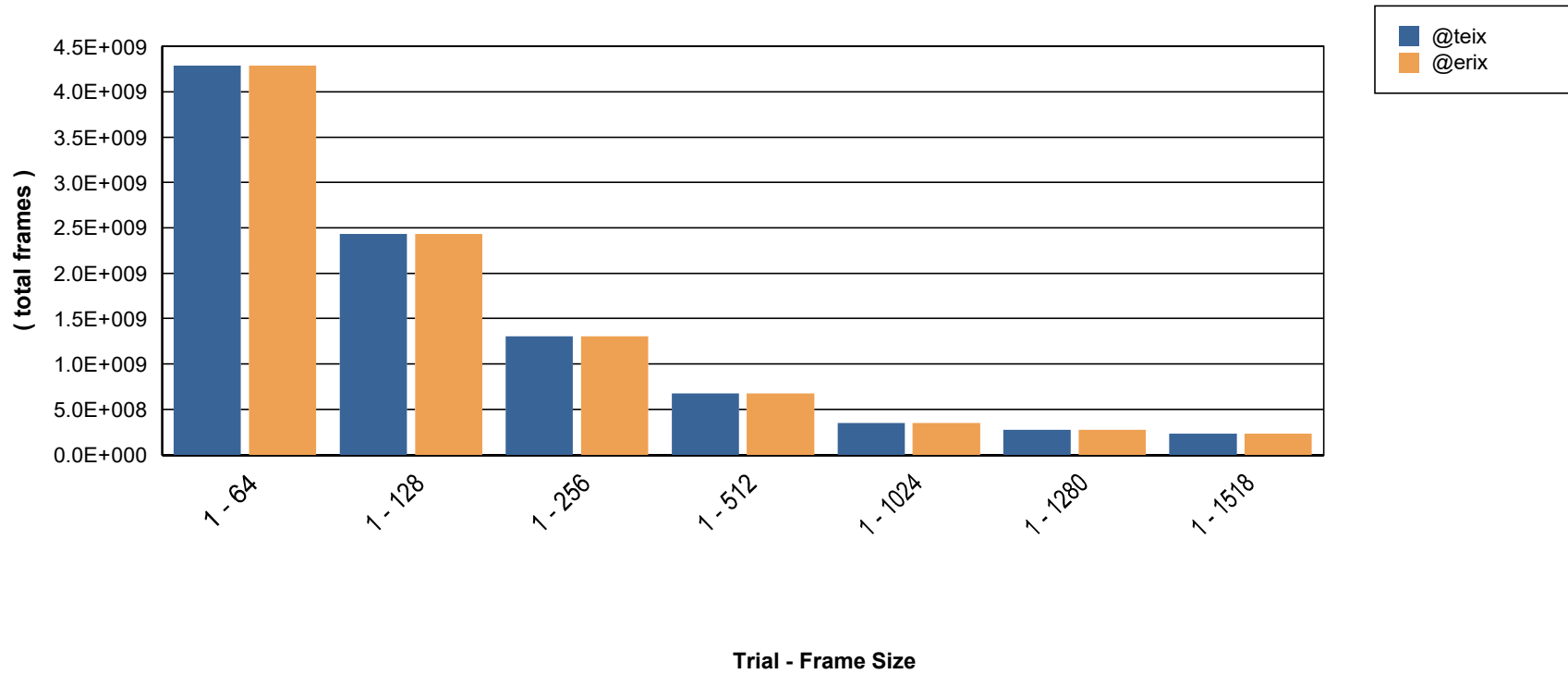
### Aggregated Frame Loss for Trial 1 and Framesize 1518



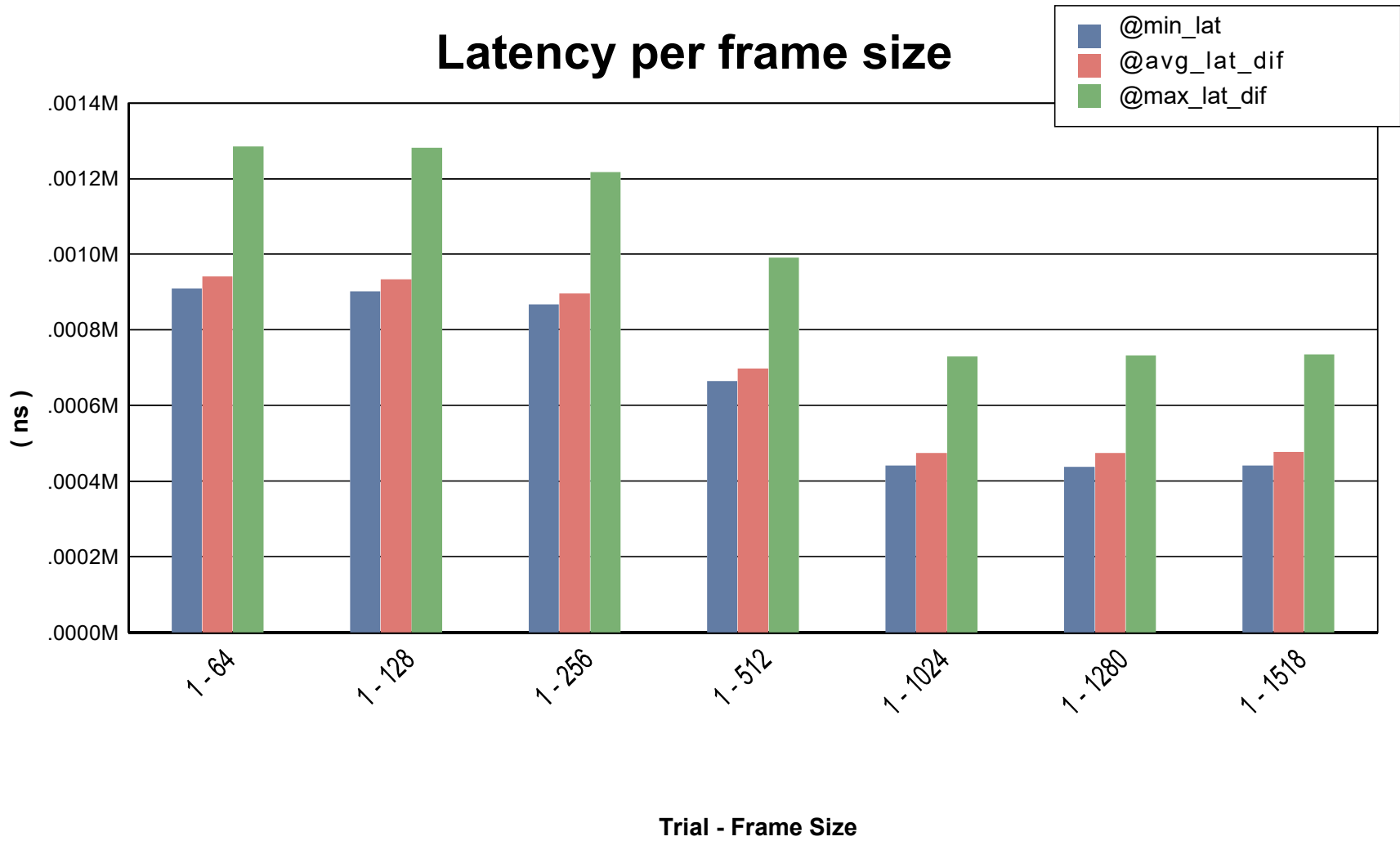


RFC2544 - Throughput/Latency - Iteration Graph

### Tx / Rx Frames per Frame Size



RFC2544 - Throughput/Latency - Iteration Graph



**RFC2544 - Throughput/Latency - Aggregated Results**

Trial/Framesize /Iteration	Agg L2 Throughput				Agg L1 Throughput		Throughput (frames)	Agg Latency		
	Agg Tx Rate %	Agg Rx Rate			Tx Rate Mbps	Rx Rate Mbps		Min (ns)	Max (ns)	Average (ns)
		%	FPS	Mbps						
Trial: 1 / FS: 64 / Iter: 9	100.00	100	29761904.8	15238.095			Tx : 595238096.000 Rx : 595238096.000 Loss : 0 Loss% : .00	935	1285	949.000
Trial: 1 / FS: 128 / Iter: 9	100.00	100	16891891.9	17297.297			Tx : 337837838.000 Rx : 337837838.000 Loss : 0 Loss% : .00	925	1282	945.000
Trial: 1 / FS: 256 / Iter: 9	100.00	100	9057971.0	18550.725			Tx : 181159420.000 Rx : 181159420.000 Loss : 0 Loss% : .00	890	1147	906.500
Trial: 1 / FS: 512 / Iter: 9	100.00	100	4699248.1	19248.120			Tx : 93984962.000 Rx : 93984962.000 Loss : 0 Loss% : .00	690	962	711.500
Trial: 1 / FS: 1024 / Iter: 9	100.00	100	2394636.0	19616.858			Tx : 47892720.000 Rx : 47892720.000 Loss : 0 Loss% : .00	472	730	488.500
Trial: 1 / FS: 1280 / Iter: 9	100.00	100	1923076.9	19692.308			Tx : 38461538.000 Rx : 38461538.000 Loss : 0 Loss% : .00	467	732	490.500
Trial: 1 / FS: 1518 / Iter: 9	100.00	100	1625487.6	19739.922			Tx : 32509752.000 Rx : 32509752.000 Loss : 0 Loss% : .00	472	735	490.500

**RFC2544 - Throughput/Latency - Aggregated Results**

Trial / Framesize / Iteration	Agg L2 Throughput				Agg L1 Throughput		Throughput (frames)	Agg Latency		
	Agg Tx Rate %	Agg Rx Rate			Tx Rate Mbps	Rx Rate Mbps		Min (ns)	Max (ns)	Average (ns)
		%	FPS	Mbps						
Trial: 1 / FS: 64 / Iter: 1	10	10	2976190.5	1523.810			Tx : 59523810.000 Rx : 59523810.000 Loss : 0 Loss% : .00	912	1045	937.500
Trial: 1 / FS: 64 / Iter: 2	55	55	16369123.7	8380.991			Tx : 327380952.00 Rx : 327380952.000 Loss : 0 Loss% : .00	910	1177	936.500
Trial: 1 / FS: 64 / Iter: 3	78	78	23065556.6	11809.565			Tx : 461309524.000 Rx : 461309524.000 Loss : 0 Loss% : .00	910	1182	937.000
Trial: 1 / FS: 64 / Iter: 4	89	89	26413809.5	13523.870			Tx : 528273810.000 Rx : 528273810.000 Loss : 0 Loss% : .00	917	1177	938.000
Trial: 1 / FS: 64 / Iter: 5	94	94	28088038.4	14381.076			Tx : 561755952.000 Rx : 561755952.000 Loss : 0 Loss% : .00	917	1175	940.500
Trial: 1 / FS: 64 / Iter: 6	97	97	28924919.5	14809.559			Tx : 578497024.000 Rx : 578497024.000 Loss : 0 Loss% : .00	922	1185	943.000
Trial: 1 / FS: 64 / Iter: 7	99	99	29343664.7	15023.956			Tx : 586867560.000 Rx : 586867560.000 Loss : 0 Loss% : .00	920	1190	945.000
Trial: 1 / FS: 64 / Iter: 8	99	99	29552669.5	15130.967			Tx : 591052828.000 Rx : 591052828.000 Loss : 0 Loss% : .00	927	1277	946.000
Trial: 1 / FS: 64 / Iter: 9	100	100	29761904.8	15238.095			Tx : 595238096.000 Rx : 595238096.000 Loss : 0 Loss% : .00	935	1285	949.000
Trial: 1 / FS: 128 / Iter: 1	10	10	1689189.2	1729.730			Tx : 33783784.000 Rx : 33783784.000 Loss : 0 Loss% : .00	902	1037	929.500
Trial: 1 / FS: 128 / Iter: 2	55	55	9290543.6	9513.517			Tx : 185810810.000 Rx : 185810810.000 Loss : 0 Loss% : .00	902	1077	929.000
Trial: 1 / FS: 128 / Iter: 3	78	78	13091281.0	13405.472			Tx : 261824324.000 Rx : 261824324.000 Loss : 0 Loss% : .00	902	1132	929.000

Trial: 1 / FS: 128 / Iter: 4	89	89	14991625.8	15351.425	Tx : 185810810.000 Rx : 185810810.000 Loss : 0 Loss% : .00			
Trial: 1 / FS: 128 / Iter: 5	94	94	15941812.4	16324.416	Tx : 318834460.000 Rx : 318834460.000 Loss : 0 Loss% : .00	910	1170	932.000
Trial: 1 / FS: 128 / Iter: 6	97	97	16416886.3	16810.892	Tx : 328336148.000 Rx : 328336148.000 Loss : 0 Loss% : .00	910	1182	933.000
Trial: 1 / FS: 128 / Iter: 7	99	99	16654414.4	17054.120	Tx : 333086994.000 Rx : 333086994.000 Loss : 0 Loss% : .00	915	1185	937.000
Trial: 1 / FS: 128 / Iter: 8	99	99	16773136.8	17175.692	Tx : 335462416.000 Rx : 335462416.000 Loss : 0 Loss% : .00	920	1190	939.000
Trial: 1 / FS: 128 / Iter: 9	100	100	16891891.9	17297.297	Tx : 337837838.000 Rx : 337837838.000 Loss : 0 Loss% : .00	925	1282	945.000
Trial: 1 / FS: 256 / Iter: 1	10	10	905797.1	1855.072	Tx : 18115942.000 Rx : 18115942.000 Loss : 0 Loss% : .00	867	920	890.500
Trial: 1 / FS: 256 / Iter: 2	55	55	4981892.0	10202.915	Tx : 99637682.000 Rx : 99637682.000 Loss : 0 Loss% : .00	867	1217	894.000
Trial: 1 / FS: 256 / Iter: 3	78	78	7019930.0	14376.817	Tx : 140398550.000 Rx : 140398550.000 Loss : 0 Loss% : .00	867	1075	894.000
Trial: 1 / FS: 256 / Iter: 4	89	89	8038963.9	16463.798	Tx : 160778986.000 Rx : 160778986.000 Loss : 0 Loss% : .00	867	1102	894.000
Trial: 1 / FS: 256 / Iter: 5	94	94	8548464.1	17507.255	Tx : 170969202.000 Rx : 170969202.000 Loss : 0 Loss% : .00	870	1132	894.000
Trial: 1 / FS: 256 / Iter: 6	97	97	8803240.7	18029.037	Tx : 176064312.000 Rx : 176064312.000 Loss : 0 Loss% : .00	870	1125	896.000
Trial: 1 / FS: 256 / Iter: 7	99	99	8930596.0	18289.861	Tx : 178611866.000 Rx : 178611866.000 Loss : 0 Loss% : .00	877	1147	898.000
Trial: 1 / FS: 256 / Iter: 8	99	99	8994290.7	18420.307	Tx : 179885644.000 Rx : 179885644.000 Loss : 0 Loss% : .00	880	1025	900.500
Trial: 1 / FS: 256 / Iter: 9	100	100	9057971.0	18550.725	Tx : 181159420.000 Rx : 181159420.000 Loss : 0 Loss% : .00	890	1147	906.500
Trial: 1 / FS: 512 / Iter: 1	10	10	469924.8	1924.812	Tx : 9398496.000 Rx : 9398496.000 Loss : 0 Loss% : .00	667	725	695.500

Trial: 1 / FS: 512 / Iter: 2	55	55	2584587.2	10586.469	Tx : 51691730.000	665	950	695.500
					Rx : 51691730.000			
					Loss : 0			
					Loss% : .00			
Trial: 1 / FS: 512 / Iter: 3	78	78	3641919.6	14917.303	Tx : 72838346.000	665	992	695.500
					Rx : 72838346.000			
					Loss : 0			
					Loss% : .00			
Trial: 1 / FS: 512 / Iter: 4	89	89	4170583.4	17082.710	Tx : 83411654.000	665	930	695.500
					Rx : 83411654.000			
					Loss : 0			
					Loss% : .00			
Trial: 1 / FS: 512 / Iter: 5	94	94	4434920.1	18165.433	Tx : 88698308.000	667	917	695.500
					Rx : 88698308.000			
					Loss : 0			
					Loss% : .00			
Trial: 1 / FS: 512 / Iter: 6	97	97	4567081.7	18706.767	Tx : 91341636.000	670	937	696.500
					Rx : 91341636.000			
					Loss : 0			
					Loss% : .00			
Trial: 1 / FS: 512 / Iter: 7	99	99	4633165.5	18977.446	Tx : 92663298.000	677	935	698.500
					Rx : 92663298.000			
					Loss : 0			
					Loss% : .00			
Trial: 1 / FS: 512 / Iter: 8	99	99	4666211.0	19112.800	Tx : 93324130.000	680	927	701.000
					Rx : 93324130.000			
					Loss : 0			
					Loss% : .00			
Trial: 1 / FS: 512 / Iter: 9	100	100	4699248.1	19248.120	Tx : 93984962.000	690	962	711.500
					Rx : 93984962.000			
					Loss : 0			
					Loss% : .00			
Trial: 1 / FS: 1024 / Iter: 1	10	10	239463.6	1961.686	Tx : 4789272.000	445	505	475.000
					Rx : 4789272.000			
					Loss : 0			
					Loss% : .00			
Trial: 1 / FS: 1024 / Iter: 2	55	55	1317049.9	10789.273	Tx : 26340996.000	445	570	473.500
					Rx : 26340996.000			
					Loss : 0			
					Loss% : .00			
Trial: 1 / FS: 1024 / Iter: 3	78	78	1855843.0	15203.066	Tx : 37116858.000	442	642	473.000
					Rx : 37116858.000			
					Loss : 0			
					Loss% : .00			
Trial: 1 / FS: 1024 / Iter: 4	89	89	2125239.7	17409.964	Tx : 42504790.000	445	705	473.000
					Rx : 42504790.000			
					Loss : 0			
					Loss% : .00			
Trial: 1 / FS: 1024 / Iter: 5	94	94	2259938.9	18513.419	Tx : 45198754.000	442	645	473.500
					Rx : 45198754.000			
					Loss : 0			
					Loss% : .00			
Trial: 1 / FS: 1024 / Iter: 6	97	97	2327287.5	19065.140	Tx : 46545738.000	442	695	473.500
					Rx : 46545738.000			
					Loss : 0			
					Loss% : .00			
Trial: 1 / FS: 1024 / Iter: 7	99	99	2360961.5	19340.997	Tx : 47219228.000	447	702	474.000
					Rx : 47219228.000			
					Loss : 0			
					Loss% : .00			

Trial: 1 / FS: 1024 / Iter: 8	99	99	2377798.8	19478.928	Tx : 47555974.000	447	710	475.500
					Rx : 47555974.000			
					Loss : 0			
					Loss% : .00			
Trial: 1 / FS: 1024 / Iter: 9	100	100	2394636.0	19616.858	Tx : 47892720.000	472	730	488.500
					Rx : 47892720.000			
					Loss : 0			
					Loss% : .00			
Trial: 1 / FS: 1280 / Iter: 1	10	10	192307.7	1969.231	Tx : 3846154.000	437	502	472.500
					Rx : 3846154.000			
					Loss : 0			
					Loss% : .00			
Trial: 1 / FS: 1280 / Iter: 2	55	55	1057692.6	10830.772	Tx : 21153846.000	440	610	472.000
					Rx : 21153846.000			
					Loss : 0			
					Loss% : .00			
Trial: 1 / FS: 1280 / Iter: 3	78	78	1490385.0	15261.542	Tx : 29807692.000	440	585	472.500
					Rx : 29807692.000			
					Loss : 0			
					Loss% : .00			
Trial: 1 / FS: 1280 / Iter: 4	89	89	1706731.5	17476.931	Tx : 34134616.000	440	667	472.500
					Rx : 34134616.000			
					Loss : 0			
					Loss% : .00			
Trial: 1 / FS: 1280 / Iter: 5	94	94	1814903.9	18584.616	Tx : 36298076.000	437	657	472.500
					Rx : 36298076.000			
					Loss : 0			
					Loss% : .00			
Trial: 1 / FS: 1280 / Iter: 6	97	97	1868991.0	19138.468	Tx : 37379808.000	440	685	472.500
					Rx : 37379808.000			
					Loss : 0			
					Loss% : .00			
Trial: 1 / FS: 1280 / Iter: 7	99	99	1896033.7	19415.385	Tx : 37920674.000	442	710	472.500
					Rx : 37920674.000			
					Loss : 0			
					Loss% : .00			
Trial: 1 / FS: 1280 / Iter: 8	99		991909555.7	19553.850	Tx : 38191106.000	452		707474.500
					Rx : 38191106.000			
					Loss : 0			
					Loss% : .00			
Trial: 1 / FS: 1280 / Iter: 9	100	100	1923076.9	19692.308	Tx : 38461538.000	467	732	490.500
					Rx : 38461538.000			
					Loss : 0			
					Loss% : .00			
Trial: 1 / FS: 1518 / Iter: 1	10	10	162548.8	1973.992	Tx : 3250976.000	447	555	475.500
					Rx : 3250976.000			
					Loss : 0			
					Loss% : .00			
Trial: 1 / FS: 1518 / Iter: 2	55	55	894018.3	10856.958	Tx : 17880364.000	445	510	475.500
					Rx : 17880364.000			
					Loss : 0			
					Loss% : .00			
Trial: 1 / FS: 1518 / Iter: 3	78	78	1259753.2	15298.443	Tx : 25195058.000	442	622	475.500
					Rx : 25195058.000			
					Loss : 0			
					Loss% : .00			
Trial: 1 / FS: 1518 / Iter: 4	89	89	1442620.9	17519.188	Tx : 28852406.000	445	562	475.500
					Rx : 28852406.000			
					Loss : 0			
					Loss% : .00			

Trial: 1 / FS: 1518 / Iter: 5	94	94	1534054.8	18629.562	Tx : 30681080.000	442	647	475.500
					Rx : 30681080.000			
					Loss : 0			
					Loss% : .00			
Trial: 1 / FS: 1518 / Iter: 6	97	97	1579771.0	19184.739	Tx : 31595416.000	442	665	475.500
					Rx : 31595416.000			
					Loss : 0			
					Loss% : .00			
Trial: 1 / FS: 1518 / Iter: 7	99	99	1602629.3	19462.330	Tx : 32052584.000	442	687	475.000
					Rx : 32052584.000			
					Loss : 0			
					Loss% : .00			
Trial: 1 / FS: 1518 / Iter: 8	99	99	1614058.4	19601.126	Tx : 32281168.000	452	707	477.500
					Rx : 32281168.000			
					Loss : 0			
					Loss% : .00			
Trial: 1 / FS: 1518 / Iter: 9	100	100	1625487.6	19739.922	Tx : 32509752.000	472	735	490.500
					Rx : 32509752.000			
					Loss : 0			
					Loss% : .00			



**RFC2544 - Throughput/Latency - Per Flow Statistics - Part 1 of 2**

Trial/ Framesize /Iteration	Tx Port	Rx Port	Flow Group	L2 Throughput				L1 Throughput		Throughput (frames)
				TX Rate %	Rx Rate			Tx Rate Mbps	Rx Rate Mbps	
					%	FPS	Mbps			
Trial: 1 / FS: 64 / Iter: 9	Ethernet - 001	Ethernet - 002	N5860-48SC-Endpoint Set-1 - Flow Group 0001	100.00	100	14880952.4	7619.05			Tx : 297619048 Rx : 297619048 Loss : 0 Loss% : 0.000
Trial: 1 / FS: 64 / Iter: 9	Ethernet - 002	Ethernet - 001	N5860-48SC-Endpoint Set-1 - Flow Group 0002	100.00	100	14880952.4	7619.05			Tx : 297619048 Rx : 297619048 Loss : 0 Loss% : 0.000
Trial: 1 / FS: 128 / Iter: 9	Ethernet - 001	Ethernet - 002	N5860-48SC-Endpoint Set-1 - Flow Group 0001	100.00	100	8445945.9	8648.65			Tx : 168918919 Rx : 168918919 Loss : 0 Loss% : 0.000
Trial: 1 / FS: 128 / Iter: 9	Ethernet - 002	Ethernet - 001	N5860-48SC-Endpoint Set-1 - Flow Group 0002	100.00	100	8445945.9	8648.65			Tx : 168918919 Rx : 168918919 Loss : 0 Loss% : 0.000
Trial: 1 / FS: 256 / Iter: 9	Ethernet - 001	Ethernet - 002	N5860-48SC-Endpoint Set-1 - Flow Group 0001	100.00	100	4528985.5	9275.36			Tx : 90579710 Rx : 90579710 Loss : 0 Loss% : 0.000
Trial: 1 / FS: 256 / Iter: 9	Ethernet - 002	Ethernet - 001	N5860-48SC-Endpoint Set-1 - Flow Group 0002	100.00	100	4528985.5	9275.36			Tx : 90579710 Rx : 90579710 Loss : 0 Loss% : 0.000
Trial: 1 / FS: 512 / Iter: 9	Ethernet - 001	Ethernet - 002	N5860-48SC-Endpoint Set-1 - Flow Group 0001	100.00	100	2349624.1	9624.06			Tx : 46992481 Rx : 46992481 Loss : 0 Loss% : 0.000
Trial: 1 / FS: 512 / Iter: 9	Ethernet - 002	Ethernet - 001	N5860-48SC-Endpoint Set-1 - Flow Group 0002	100.00	100	2349624.1	9624.06			Tx : 46992481 Rx : 46992481 Loss : 0 Loss% : 0.000
Trial: 1 / FS: 1024 / Iter: 9	Ethernet - 001	Ethernet - 002	N5860-48SC-Endpoint Set-1 - Flow Group 0001	100.00	100	1197318.0	9808.43			Tx : 23946360 Rx : 23946360 Loss : 0 Loss% : 0.000
Trial: 1 / FS: 1024 / Iter: 9	Ethernet - 002	Ethernet - 001	N5860-48SC-Endpoint Set-1 - Flow Group 0002	100.00	100	1197318.0	9808.43			Tx : 23946360 Rx : 23946360 Loss : 0 Loss% : 0.000
Trial: 1 / FS: 1280 / Iter: 9	Ethernet - 001	Ethernet - 002	N5860-48SC-Endpoint Set-1 - Flow Group 0001	100.00	100	961538.5	9846.15			Tx : 19230769 Rx : 19230769 Loss : 0 Loss% : 0.000
Trial: 1 / FS: 1280 / Iter: 9	Ethernet - 002	Ethernet - 001	N5860-48SC-Endpoint Set-1 - Flow Group 0002	100.00	100	961538.5	9846.15			Tx : 19230769 Rx : 19230769 Loss : 0 Loss% : 0.000
Trial: 1 / FS: 1518 / Iter: 9	Ethernet - 001	Ethernet - 002	N5860-48SC-Endpoint Set-1 - Flow Group 0001	100.00	100	812743.8	9869.96			Tx : 16254876 Rx : 16254876 Loss : 0 Loss% : 0.000

Trial: 1 / FS: 1518 / Iter: 9	Ethernet - 002	Ethernet - 001	N5860-48SC-Endpoint Set-1 - Flow Group 0002	100.00	100	812743.8	9869.96	Tx : 16254876
								Rx : 16254876
								Loss : 0
								Loss% : 0.000

**RFC2544 - Throughput/Latency - Per Flow Statistics - Part 2 of 2**

Trial / Framesize / Iteration	Tx Port	Rx Port	Flow Group	Min Latency (ns)	Max Latency (ns)	Avg Latency (ns)
Trial: 1 / FS: 64 / Iter: 9	Ethernet - 001	Ethernet - 002	N5860-48SC-Endpoint Set-1 - Flow Group 0001	935	1285	948
Trial: 1 / FS: 64 / Iter: 9	Ethernet - 002	Ethernet - 001	5860-48SC-Endpoint Set-1 - Flow Group 0002	935	1280	950
Trial: 1 / FS: 128 / Iter: 9	Ethernet - 001	Ethernet - 002	N5860-48SC-Endpoint Set-1 - Flow Group 0001	925	1275	948
Trial: 1 / FS: 128 / Iter: 9	Ethernet - 002	Ethernet - 001	N5860-48SC-Endpoint Set-1 - Flow Group 0002	925	1282	942
Trial: 1 / FS: 256 / Iter: 9	Ethernet - 001	Ethernet - 002	N5860-48SC-Endpoint Set-1 - Flow Group 0001	892	1032	907
Trial: 1 / FS: 256 / Iter: 9	Ethernet - 002	Ethernet - 001	N5860-48SC-Endpoint Set-1 - Flow Group 0002	890	1147	906
Trial: 1 / FS: 512 / Iter: 9	Ethernet - 001	Ethernet - 002	N5860-48SC-Endpoint Set-1 - Flow Group 0001	695	962	714
Trial: 1 / FS: 512 / Iter: 9	Ethernet - 002	Ethernet - 001	N5860-48SC-Endpoint Set-1 - Flow Group 0002	690	957	709
Trial: 1 / FS: 1024 / Iter: 9	Ethernet - 001	Ethernet - 002	N5860-48SC-Endpoint Set-1 - Flow Group 0001	472	730	490
Trial: 1 / FS: 1024 / Iter: 9	Ethernet - 002	Ethernet - 001	N5860-48SC-Endpoint Set-1 - Flow Group 0002	472	612	487
Trial: 1 / FS: 1280 / Iter: 9	Ethernet - 001	Ethernet - 002	N5860-48SC-Endpoint Set-1 - Flow Group 0001	467	732	492
Trial: 1 / FS: 1280 / Iter: 9	Ethernet - 002	Ethernet - 001	N5860-48SC-Endpoint Set-1 - Flow Group 0002	475	615	489
Trial: 1 / FS: 1518 / Iter: 9	Ethernet - 001	Ethernet - 002	N5860-48SC-Endpoint Set-1 - Flow Group 0001	475	617	492
Trial: 1 / FS: 1518 / Iter: 9	Ethernet - 002	Ethernet - 001	N5860-48SC-Endpoint Set-1 - Flow Group 0002	472	735	489

**RFC2544 - Throughput/Latency - Iteration Statistics - Part 1 of 2**

Trial / Framesize / Iteration	Tx Port	Rx Port	Flow Group	L2 Throughput				L1 Throughput		Throughput (frames)
				Tx Rate %	Rx Rate			Tx Rate Mbps	Rx Rate Mbps	
					%	FPS	Mbps			
Trial: 1 / FS: 64 / Iter: 1	Ethernet - 001	Ethernet - 002	N5860-48SC-Endpoint Set-1 - Flow Group 0001	10.00	10.00	1488095.2	761.91			Tx : 29761905 Rx : 29761905 Loss : 0 Loss% : 0.000
Trial: 1 / FS: 64 / Iter: 1	Ethernet - 002	Ethernet - 001	N5860-48SC-Endpoint Set-1 - Flow Group 0002	10.00	10.00	1488095.2	761.91			Tx : 29761905 Rx : 29761905 Loss : 0 Loss% : 0.000
Trial: 1 / FS: 64 / Iter: 2	Ethernet - 001	Ethernet - 002	N5860-48SC-Endpoint Set-1 - Flow Group 0001	55.00	55.00	8184561.9	4190.50			Tx : 163690476 Rx : 163690476 Loss : 0 Loss% : 0.000
Trial: 1 / FS: 64 / Iter: 2	Ethernet - 002	Ethernet - 001	N5860-48SC-Endpoint Set-1 - Flow Group 0002	55.00	55.00	8184561.9	4190.50			Tx : 163690476 Rx : 163690476 Loss : 0 Loss% : 0.000
Trial: 1 / FS: 64 / Iter: 3	Ethernet - 001	Ethernet - 002	N5860-48SC-Endpoint Set-1 - Flow Group 0001	77.50	77.50	11532778.3	5904.78			Tx : 230654762 Rx : 230654762 Loss : 0 Loss% : 0.000
Trial: 1 / FS: 64 / Iter: 3	Ethernet - 002	Ethernet - 001	N5860-48SC-Endpoint Set-1 - Flow Group 0002	77.50	77.50	11532778.3	5904.78			Tx : 230654762 Rx : 230654762 Loss : 0 Loss% : 0.000
Trial: 1 / FS: 64 / Iter: 4	Ethernet - 001	Ethernet - 002	N5860-48SC-Endpoint Set-1 - Flow Group 0001	88.75	88.75	13206904.7	6761.94			Tx : 264136905 Rx : 264136905 Loss : 0 Loss% : 0.000
Trial: 1 / FS: 64 / Iter: 4	Ethernet - 002	Ethernet - 001	N5860-48SC-Endpoint Set-1 - Flow Group 0002	88.75	88.75	13206904.7	6761.94			Tx : 264136905 Rx : 264136905 Loss : 0 Loss% : 0.000
Trial: 1 / FS: 64 / Iter: 5	Ethernet - 001	Ethernet - 002	N5860-48SC-Endpoint Set-1 - Flow Group 0001	94.38	94.38	14044019.2	7190.54			Tx : 280877976 Rx : 280877976 Loss : 0 Loss% : 0.000
Trial: 1 / FS: 64 / Iter: 5	Ethernet - 002	Ethernet - 001	N5860-48SC-Endpoint Set-1 - Flow Group 0002	94.38	94.38	14044019.2	7190.54			Tx : 280877976 Rx : 280877976 Loss : 0 Loss% : 0.000
Trial: 1 / FS: 64 / Iter: 6	Ethernet - 001	Ethernet - 002	N5860-48SC-Endpoint Set-1 - Flow Group 0001	97.19	97.19	14462459.8	7404.78			Tx : 289248512 Rx : 289248512 Loss : 0 Loss% : 0.000
Trial: 1 / FS: 64 / Iter: 6	Ethernet - 002	Ethernet - 001	N5860-48SC-Endpoint Set-1 - Flow Group 0002	97.19	97.19	14462459.7	7404.78			Tx : 289248512 Rx : 289248512 Loss : 0 Loss% : 0.000
Trial: 1 / FS: 64 / Iter: 7	Ethernet - 001	Ethernet - 002	N5860-48SC-Endpoint Set-1 - Flow Group 0001	98.59	98.59	14671832.4	7511.98			Tx : 293433780 Rx : 293433780 Loss : 0 Loss% : 0.000

Trial: 1 / FS: 64 / Iter: 7	Ethernet - 002	Ethernet - 001	N5860-48SC-Endpoint Set-1 - Flow Group 0002	98.59	98.59	14671832.4	7511.98	Tx : 293433780
								Rx : 293433780
								Loss : 0
								Loss% : 0.000
Trial: 1 / FS: 64 / Iter: 8	Ethernet - 001	Ethernet - 002	N5860-48SC-Endpoint Set-1 - Flow Group 0001	99.30	99.30	14776334.8	7565.48	Tx : 295526414
								Rx : 295526414
								Loss : 0
								Loss% : 0.000
Trial: 1 / FS: 64 / Iter: 8	Ethernet - 002	Ethernet - 001	N5860-48SC-Endpoint Set-1 - Flow Group 0002	99.30	99.30	14776334.8	7565.48	Tx : 295526414
								Rx : 295526414
								Loss : 0
								Loss% : 0.000
Trial: 1 / FS: 64 / Iter: 9	Ethernet - 001	Ethernet - 002	N5860-48SC-Endpoint Set-1 - Flow Group 0001	100.00	100.00	14880952.4	7619.05	Tx : 297619048
								Rx : 297619048
								Loss : 0
								Loss% : 0.000
Trial: 1 / FS: 64 / Iter: 9	Ethernet - 002	Ethernet - 001	N5860-48SC-Endpoint Set-1 - Flow Group 0002	100.00	100.00	14880952.4	7619.05	Tx : 297619048
								Rx : 297619048
								Loss : 0
								Loss% : 0.000
Trial: 1 / FS: 128 / Iter: 1	Ethernet - 001	Ethernet - 002	N5860-48SC-Endpoint Set-1 - Flow Group 0001	10.00	10.00	844594.6	864.87	Tx : 16891892
								Rx : 16891892
								Loss : 0
								Loss% : 0.000
Trial: 1 / FS: 128 / Iter: 1	Ethernet - 002	Ethernet - 001	N5860-48SC-Endpoint Set-1 - Flow Group 0002	10.00	10.00	844594.6	864.87	Tx : 16891892
								Rx : 16891892
								Loss : 0
								Loss% : 0.000
Trial: 1 / FS: 128 / Iter: 2	Ethernet - 001	Ethernet - 002	N5860-48SC-Endpoint Set-1 - Flow Group 0001	55.00	55.00	4645271.8	4756.76	Tx : 92905405
								Rx : 92905405
								Loss : 0
								Loss% : 0.000
Trial: 1 / FS: 128 / Iter: 2	Ethernet - 002	Ethernet - 001	N5860-48SC-Endpoint Set-1 - Flow Group 0002	55.00	55.00	4645271.8	4756.76	Tx : 92905405
								Rx : 92905405
								Loss : 0
								Loss% : 0.000
Trial: 1 / FS: 128 / Iter: 3	Ethernet - 001	Ethernet - 002	N5860-48SC-Endpoint Set-1 - Flow Group 0001	77.50	77.50	6545640.5	6702.74	Tx : 130912162
								Rx : 130912162
								Loss : 0
								Loss% : 0.000
Trial: 1 / FS: 128 / Iter: 3	Ethernet - 002	Ethernet - 001	N5860-48SC-Endpoint Set-1 - Flow Group 0002	77.50	77.50	6545640.5	6702.74	Tx : 130912162
								Rx : 130912162
								Loss : 0
								Loss% : 0.000
Trial: 1 / FS: 128 / Iter: 4	Ethernet - 001	Ethernet - 002	N5860-48SC-Endpoint Set-1 - Flow Group 0001	88.75	88.75	7495812.9	7675.71	Tx : 149915541
								Rx : 149915541
								Loss : 0
								Loss% : 0.000
Trial: 1 / FS: 128 / Iter: 4	Ethernet - 002	Ethernet - 001	N5860-48SC-Endpoint Set-1 - Flow Group 0002	88.75	88.75	7495812.9	7675.71	Tx : 149915541
								Rx : 149915541
								Loss : 0
								Loss% : 0.000
Trial: 1 / FS: 128 / Iter: 5	Ethernet - 001	Ethernet - 002	N5860-48SC-Endpoint Set-1 - Flow Group 0001	94.38	94.38	7970906.2	8162.21	Tx : 159417230
								Rx : 159417230
								Loss : 0
								Loss% : 0.000
Trial: 1 / FS: 128 / Iter: 5	Ethernet - 002	Ethernet - 001	N5860-48SC-Endpoint Set-1 - Flow Group 0002	94.38	94.38	7970906.2	8162.21	Tx : 159417230
								Rx : 159417230
								Loss : 0
								Loss% : 0.000

Trial: 1 / FS: 128 / Iter: 6	Ethernet - 001	Ethernet - 002	N5860-48SC-Endpoint Set-1 - Flow Group 0001	97.19	97.19	8208443.2	8405.45	Tx : 164168074
								Rx : 164168074
								Loss : 0
								Loss% : 0.000
Trial: 1 / FS: 128 / Iter: 6	Ethernet - 002	Ethernet - 001	N5860-48SC-Endpoint Set-1 - Flow Group 0002	97.19	97.19	8208443.1	8405.45	Tx : 164168074
								Rx : 164168074
								Loss : 0
								Loss% : 0.000
Trial: 1 / FS: 128 / Iter: 7	Ethernet - 001	Ethernet - 002	N5860-48SC-Endpoint Set-1 - Flow Group 0001	98.59	98.59	8327207.2	8527.06	Tx : 166543497
								Rx : 166543497
								Loss : 0
								Loss% : 0.000
Trial: 1 / FS: 128 / Iter: 7	Ethernet - 002	Ethernet - 001	N5860-48SC-Endpoint Set-1 - Flow Group 0002	98.59	98.59	8327207.2	8527.06	Tx : 166543497
								Rx : 166543497
								Loss : 0
								Loss% : 0.000
Trial: 1 / FS: 128 / Iter: 8	Ethernet - 001	Ethernet - 002	N5860-48SC-Endpoint Set-1 - Flow Group 0001	99.30	99.30	8386568.4	8587.85	Tx : 167731208
								Rx : 167731208
								Loss : 0
								Loss% : 0.000
Trial: 1 / FS: 128 / Iter: 8	Ethernet - 002	Ethernet - 001	N5860-48SC-Endpoint Set-1 - Flow Group 0002	99.30	99.30	8386568.4	8587.85	Tx : 167731208
								Rx : 167731208
								Loss : 0
								Loss% : 0.000
Trial: 1 / FS: 128 / Iter: 9	Ethernet - 001	Ethernet - 002	N5860-48SC-Endpoint Set-1 - Flow Group 0001	100.00	100.00	8445945.9	8648.65	Tx : 168918919
								Rx : 168918919
								Loss : 0
								Loss% : 0.000
Trial: 1 / FS: 128 / Iter: 9	Ethernet - 002	Ethernet - 001	N5860-48SC-Endpoint Set-1 - Flow Group 0002	100.00	100.00	8445945.9	8648.65	Tx : 168918919
								Rx : 168918919
								Loss : 0
								Loss% : 0.000
Trial: 1 / FS: 256 / Iter: 1	Ethernet - 001	Ethernet - 002	N5860-48SC-Endpoint Set-1 - Flow Group 0001	10.00	10.00	452898.6	927.54	Tx : 9057971
								Rx : 9057971
								Loss : 0
								Loss% : 0.000
Trial: 1 / FS: 256 / Iter: 1	Ethernet - 002	Ethernet - 001	N5860-48SC-Endpoint Set-1 - Flow Group 0002	10.00	10.00	452898.6	927.54	Tx : 9057971
								Rx : 9057971
								Loss : 0
								Loss% : 0.000
Trial: 1 / FS: 256 / Iter: 2	Ethernet - 001	Ethernet - 002	N5860-48SC-Endpoint Set-1 - Flow Group 0001	55.00	55.00	2490946.0	5101.46	Tx : 49818841
								Rx : 49818841
								Loss : 0
								Loss% : 0.000
Trial: 1 / FS: 256 / Iter: 2	Ethernet - 002	Ethernet - 001	N5860-48SC-Endpoint Set-1 - Flow Group 0002	55.00	55.00	2490946.0	5101.46	Tx : 49818841
								Rx : 49818841
								Loss : 0
								Loss% : 0.000
Trial: 1 / FS: 256 / Iter: 3	Ethernet - 001	Ethernet - 002	N5860-48SC-Endpoint Set-1 - Flow Group 0001	77.50	77.50	3509965.0	7188.41	Tx : 70199275
								Rx : 70199275
								Loss : 0
								Loss% : 0.000
Trial: 1 / FS: 256 / Iter: 3	Ethernet - 002	Ethernet - 001	N5860-48SC-Endpoint Set-1 - Flow Group 0002	77.50	77.50	3509965.0	7188.41	Tx : 70199275
								Rx : 70199275
								Loss : 0
								Loss% : 0.000
Trial: 1 / FS: 256 / Iter: 4	Ethernet - 001	Ethernet - 002	N5860-48SC-Endpoint Set-1 - Flow Group 0001	88.75	88.75	4019481.9	8231.90	Tx : 80389493
								Rx : 80389493
								Loss : 0
								Loss% : 0.000

Trial: 1 / FS: 256 / Iter: 4	Ethernet - 002	Ethernet - 001	N5860-48SC-Endpoint Set-1 - Flow Group 0002	88.75	88.75	4019481.9	8231.90	Tx : Rx : Loss : Loss% :	80389493 80389493 0 0.000
Trial: 1 / FS: 256 / Iter: 5	Ethernet - 001	Ethernet - 002	N5860-48SC-Endpoint Set-1 - Flow Group 0001	94.38	94.38	4274232.1	8753.63	Tx : Rx : Loss : Loss% :	85484601 85484601 0 0.000
Trial: 1 / FS: 256 / Iter: 5	Ethernet - 002	Ethernet - 001	N5860-48SC-Endpoint Set-1 - Flow Group 0002	94.38	94.38	4274232.1	8753.63	Tx : Rx : Loss : Loss% :	85484601 85484601 0 0.000
Trial: 1 / FS: 256 / Iter: 6	Ethernet - 001	Ethernet - 002	N5860-48SC-Endpoint Set-1 - Flow Group 0001	97.19	97.19	4401620.4	9014.52	Tx : Rx : Loss : Loss% :	88032156 88032156 0 0.000
Trial: 1 / FS: 256 / Iter: 6	Ethernet - 002	Ethernet - 001	N5860-48SC-Endpoint Set-1 - Flow Group 0002	97.19	97.19	4401620.3	9014.52	Tx : Rx : Loss : Loss% :	88032156 88032156 0 0.000
Trial: 1 / FS: 256 / Iter: 7	Ethernet - 001	Ethernet - 002	N5860-48SC-Endpoint Set-1 - Flow Group 0001	98.59	98.59	4465298.0	9144.93	Tx : Rx : Loss : Loss% :	89305933 89305933 0 0.000
Trial: 1 / FS: 256 / Iter: 7	Ethernet - 002	Ethernet - 001	N5860-48SC-Endpoint Set-1 - Flow Group 0002	98.59	98.59	4465298.0	9144.93	Tx : Rx : Loss : Loss% :	89305933 89305933 0 0.000
Trial: 1 / FS: 256 / Iter: 8	Ethernet - 001	Ethernet - 002	N5860-48SC-Endpoint Set-1 - Flow Group 0001	99.30	99.30	4497145.4	9210.15	Tx : Rx : Loss : Loss% :	89942822 89942822 0 0.000
Trial: 1 / FS: 256 / Iter: 8	Ethernet - 002	Ethernet - 001	N5860-48SC-Endpoint Set-1 - Flow Group 0002	99.30	99.30	4497145.4	9210.15	Tx : Rx : Loss : Loss% :	89942822 89942822 0 0.000
Trial: 1 / FS: 256 / Iter: 9	Ethernet - 001	Ethernet - 002	N5860-48SC-Endpoint Set-1 - Flow Group 0001	100.00	100.00	4528985.5	9275.36	Tx : Rx : Loss : Loss% :	90579710 90579710 0 0.000
Trial: 1 / FS: 256 / Iter: 9	Ethernet - 002	Ethernet - 001	N5860-48SC-Endpoint Set-1 - Flow Group 0002	100.00	100.00	4528985.5	9275.36	Tx : Rx : Loss : Loss% :	90579710 90579710 0 0.000
Trial: 1 / FS: 512 / Iter: 1	Ethernet - 001	Ethernet - 002	N5860-48SC-Endpoint Set-1 - Flow Group 0001	10.00	10.00	234962.4	962.41	Tx : Rx : Loss : Loss% :	4699248 4699248 0 0.000
Trial: 1 / FS: 512 / Iter: 1	Ethernet - 002	Ethernet - 001	N5860-48SC-Endpoint Set-1 - Flow Group 0002	10.00	10.00	234962.4	962.41	Tx : Rx : Loss : Loss% :	4699248 4699248 0 0.000
Trial: 1 / FS: 512 / Iter: 2	Ethernet - 001	Ethernet - 002	N5860-48SC-Endpoint Set-1 - Flow Group 0001	55.00	55.00	1292293.6	5293.24	Tx : Rx : Loss : Loss% :	25845865 25845865 0 0.000
Trial: 1 / FS: 512 / Iter: 2	Ethernet - 002	Ethernet - 001	N5860-48SC-Endpoint Set-1 - Flow Group 0002	55.00	55.00	1292293.6	5293.24	Tx : Rx : Loss : Loss% :	25845865 25845865 0 0.000

Trial: 1 / FS: 512 / Iter: 3	Ethernet - 001	Ethernet - 002	N5860-48SC-Endpoint Set-1 - Flow Group 0001	77.50	77.50	1820959.8	7458.65	Tx : Rx : Loss : Loss% :	36419173 36419173 0 0.000
Trial: 1 / FS: 512 / Iter: 3	Ethernet - 002	Ethernet - 001	N5860-48SC-Endpoint Set-1 - Flow Group 0002	77.50	77.50	1820959.8	7458.65	Tx : Rx : Loss : Loss% :	36419173 36419173 0 0.000
Trial: 1 / FS: 512 / Iter: 4	Ethernet - 001	Ethernet - 002	N5860-48SC-Endpoint Set-1 - Flow Group 0001	88.75	88.75	2085291.7	8541.36	Tx : Rx : Loss : Loss% :	41705827 41705827 0 0.000
Trial: 1 / FS: 512 / Iter: 4	Ethernet - 002	Ethernet - 001	N5860-48SC-Endpoint Set-1 - Flow Group 0002	88.75	88.75	2085291.7	8541.36	Tx : Rx : Loss : Loss% :	41705827 41705827 0 0.000
Trial: 1 / FS: 512 / Iter: 5	Ethernet - 001	Ethernet - 002	N5860-48SC-Endpoint Set-1 - Flow Group 0001	94.38	94.38	2217460.1	9082.72	Tx : Rx : Loss : Loss% :	44349154 44349154 0 0.000
Trial: 1 / FS: 512 / Iter: 5	Ethernet - 002	Ethernet - 001	N5860-48SC-Endpoint Set-1 - Flow Group 0002	94.38	94.38	2217460.1	9082.72	Tx : Rx : Loss : Loss% :	44349154 44349154 0 0.000
Trial: 1 / FS: 512 / Iter: 6	Ethernet - 001	Ethernet - 002	N5860-48SC-Endpoint Set-1 - Flow Group 0001	97.19	97.19	2283540.8	9353.38	Tx : Rx : Loss : Loss% :	45670818 45670818 0 0.000
Trial: 1 / FS: 512 / Iter: 6	Ethernet - 002	Ethernet - 001	N5860-48SC-Endpoint Set-1 - Flow Group 0002	97.19	97.19	2283540.8	9353.38	Tx : Rx : Loss : Loss% :	45670818 45670818 0 0.000
Trial: 1 / FS: 512 / Iter: 7	Ethernet - 001	Ethernet - 002	N5860-48SC-Endpoint Set-1 - Flow Group 0001	98.59	98.59	2316582.7	9488.72	Tx : Rx : Loss : Loss% :	46331649 46331649 0 0.000
Trial: 1 / FS: 512 / Iter: 7	Ethernet - 002	Ethernet - 001	N5860-48SC-Endpoint Set-1 - Flow Group 0002	98.59	98.59	2316582.8	9488.72	Tx : Rx : Loss : Loss% :	46331649 46331649 0 0.000
Trial: 1 / FS: 512 / Iter: 8	Ethernet - 001	Ethernet - 002	N5860-48SC-Endpoint Set-1 - Flow Group 0001	99.30	99.30	2333105.5	9556.40	Tx : Rx : Loss : Loss% :	46662065 46662065 0 0.000
Trial: 1 / FS: 512 / Iter: 8	Ethernet - 002	Ethernet - 001	N5860-48SC-Endpoint Set-1 - Flow Group 0002	99.30	99.30	2333105.5	9556.40	Tx : Rx : Loss : Loss% :	46662065 46662065 0 0.000
Trial: 1 / FS: 512 / Iter: 9	Ethernet - 001	Ethernet - 002	N5860-48SC-Endpoint Set-1 - Flow Group 0001	100.00	100.00	2349624.1	9624.06	Tx : Rx : Loss : Loss% :	46992481 46992481 0 0.000
Trial: 1 / FS: 512 / Iter: 9	Ethernet - 002	Ethernet - 001	N5860-48SC-Endpoint Set-1 - Flow Group 0002	100.00	100.00	2349624.1	9624.06	Tx : Rx : Loss : Loss% :	46992481 46992481 0 0.000
Trial: 1 / FS: 1024 / Iter: 1	Ethernet - 001	Ethernet - 002	N5860-48SC-Endpoint Set-1 - Flow Group 0001	10.00	10.00	119731.8	980.84	Tx : Rx : Loss : Loss% :	2394636 2394636 0 0.000

Trial: 1 / FS: 1024 / Iter: 1	Ethernet - 002	Ethernet - 001	N5860-48SC-Endpoint Set-1 - Flow Group 0002	10.00	10.00	119731.8	980.84	Tx : Rx : Loss : Loss% :	2394636 2394636 0 0.000
Trial: 1 / FS: 1024 / Iter: 2	Ethernet - 001	Ethernet - 002	N5860-48SC-Endpoint Set-1 - Flow Group 0001	55.00	55.00	658525.0	5394.64	Tx : Rx : Loss : Loss% :	13170498 13170498 0 0.000
Trial: 1 / FS: 1024 / Iter: 2	Ethernet - 002	Ethernet - 001	N5860-48SC-Endpoint Set-1 - Flow Group 0002	55.00	55.00	658525.0	5394.64	Tx : Rx : Loss : Loss% :	13170498 13170498 0 0.000
Trial: 1 / FS: 1024 / Iter: 3	Ethernet - 001	Ethernet - 002	N5860-48SC-Endpoint Set-1 - Flow Group 0001	77.50	77.50	927921.5	7601.53	Tx : Rx : Loss : Loss% :	18558429 18558429 0 0.000
Trial: 1 / FS: 1024 / Iter: 3	Ethernet - 002	Ethernet - 001	N5860-48SC-Endpoint Set-1 - Flow Group 0002	77.50	77.50	927921.5	7601.53	Tx : Rx : Loss : Loss% :	18558429 18558429 0 0.000
Trial: 1 / FS: 1024 / Iter: 4	Ethernet - 001	Ethernet - 002	N5860-48SC-Endpoint Set-1 - Flow Group 0001	88.75	88.75	1062619.9	8704.98	Tx : Rx : Loss : Loss% :	21252395 21252395 0 0.000
Trial: 1 / FS: 1024 / Iter: 4	Ethernet - 002	Ethernet - 001	N5860-48SC-Endpoint Set-1 - Flow Group 0002	88.75	88.75	1062619.9	8704.98	Tx : Rx : Loss : Loss% :	21252395 21252395 0 0.000
Trial: 1 / FS: 1024 / Iter: 5	Ethernet - 001	Ethernet - 002	N5860-48SC-Endpoint Set-1 - Flow Group 0001	94.38	94.38	1129969.4	9256.71	Tx : Rx : Loss : Loss% :	22599377 22599377 0 0.000
Trial: 1 / FS: 1024 / Iter: 5	Ethernet - 002	Ethernet - 001	N5860-48SC-Endpoint Set-1 - Flow Group 0002	94.38	94.38	1129969.4	9256.71	Tx : Rx : Loss : Loss% :	22599377 22599377 0 0.000
Trial: 1 / FS: 1024 / Iter: 6	Ethernet - 001	Ethernet - 002	N5860-48SC-Endpoint Set-1 - Flow Group 0001	97.19	97.19	1163643.8	9532.57	Tx : Rx : Loss : Loss% :	23272869 23272869 0 0.000
Trial: 1 / FS: 1024 / Iter: 6	Ethernet - 002	Ethernet - 001	N5860-48SC-Endpoint Set-1 - Flow Group 0002	97.19	97.19	1163643.8	9532.57	Tx : Rx : Loss : Loss% :	23272869 23272869 0 0.000
Trial: 1 / FS: 1024 / Iter: 7	Ethernet - 001	Ethernet - 002	N5860-48SC-Endpoint Set-1 - Flow Group 0001	98.59	98.59	1180480.8	9670.50	Tx : Rx : Loss : Loss% :	23609614 23609614 0 0.000
Trial: 1 / FS: 1024 / Iter: 7	Ethernet - 002	Ethernet - 001	N5860-48SC-Endpoint Set-1 - Flow Group 0002	98.59	98.59	1180480.8	9670.50	Tx : Rx : Loss : Loss% :	23609614 23609614 0 0.000
Trial: 1 / FS: 1024 / Iter: 8	Ethernet - 001	Ethernet - 002	N5860-48SC-Endpoint Set-1 - Flow Group 0001	99.30	99.30	1188899.4	9739.46	Tx : Rx : Loss : Loss% :	23777987 23777987 0 0.000
Trial: 1 / FS: 1024 / Iter: 8	Ethernet - 002	Ethernet - 001	N5860-48SC-Endpoint Set-1 - Flow Group 0002	99.30	99.30	1188899.4	9739.46	Tx : Rx : Loss : Loss% :	23777987 23777987 0 0.000



Trial: 1 / FS: 1024 / Iter: 9	Ethernet - 001	Ethernet - 002	N5860-48SC-Endpoint Set-1 - Flow Group 0001	100.00	100.00	1197318.0	9808.43	Tx : 23946360 Rx : 23946360 Loss : 0 Loss% : 0.000
Trial: 1 / FS: 1024 / Iter: 9	Ethernet - 002	Ethernet - 001	N5860-48SC-Endpoint Set-1 - Flow Group 0002	100.00	100.00	1197318.0	9808.43	Tx : 23946360 Rx : 23946360 Loss : 0 Loss% : 0.000
Trial: 1 / FS: 1280 / Iter: 1	Ethernet - 001	Ethernet - 002	N5860-48SC-Endpoint Set-1 - Flow Group 0001	10.00	10.00	96153.8	984.62	Tx : 1923077 Rx : 1923077 Loss : 0 Loss% : 0.000
Trial: 1 / FS: 1280 / Iter: 1	Ethernet - 002	Ethernet - 001	N5860-48SC-Endpoint Set-1 - Flow Group 0002	10.00	10.00	96153.8	984.62	Tx : 1923077 Rx : 1923077 Loss : 0 Loss% : 0.000
Trial: 1 / FS: 1280 / Iter: 2	Ethernet - 001	Ethernet - 002	N5860-48SC-Endpoint Set-1 - Flow Group 0001	55.00	55.00	528846.3	5415.39	Tx : 10576923 Rx : 10576923 Loss : 0 Loss% : 0.000
Trial: 1 / FS: 1280 / Iter: 2	Ethernet - 002	Ethernet - 001	N5860-48SC-Endpoint Set-1 - Flow Group 0002	55.00	55.00	528846.3	5415.39	Tx : 10576923 Rx : 10576923 Loss : 0 Loss% : 0.000
Trial: 1 / FS: 1280 / Iter: 3	Ethernet - 001	Ethernet - 002	N5860-48SC-Endpoint Set-1 - Flow Group 0001	77.50	77.50	745192.5	7630.77	Tx : 14903846 Rx : 14903846 Loss : 0 Loss% : 0.000
Trial: 1 / FS: 1280 / Iter: 3	Ethernet - 002	Ethernet - 001	N5860-48SC-Endpoint Set-1 - Flow Group 0002	77.50	77.50	745192.5	7630.77	Tx : 14903846 Rx : 14903846 Loss : 0 Loss% : 0.000
Trial: 1 / FS: 1280 / Iter: 4	Ethernet - 001	Ethernet - 002	N5860-48SC-Endpoint Set-1 - Flow Group 0001	88.75	88.75	853365.8	8738.47	Tx : 17067308 Rx : 17067308 Loss : 0 Loss% : 0.000
Trial: 1 / FS: 1280 / Iter: 4	Ethernet - 002	Ethernet - 001	N5860-48SC-Endpoint Set-1 - Flow Group 0002	88.75	88.75	853365.8	8738.47	Tx : 17067308 Rx : 17067308 Loss : 0 Loss% : 0.000
Trial: 1 / FS: 1280 / Iter: 5	Ethernet - 001	Ethernet - 002	N5860-48SC-Endpoint Set-1 - Flow Group 0001	94.38	94.38	907452.0	9292.31	Tx : 18149038 Rx : 18149038 Loss : 0 Loss% : 0.000
Trial: 1 / FS: 1280 / Iter: 5	Ethernet - 002	Ethernet - 001	N5860-48SC-Endpoint Set-1 - Flow Group 0002	94.38	94.38	907452.0	9292.31	Tx : 18149038 Rx : 18149038 Loss : 0 Loss% : 0.000
Trial: 1 / FS: 1280 / Iter: 6	Ethernet - 001	Ethernet - 002	N5860-48SC-Endpoint Set-1 - Flow Group 0001	97.19	97.19	934495.5	9569.23	Tx : 18689904 Rx : 18689904 Loss : 0 Loss% : 0.000
Trial: 1 / FS: 1280 / Iter: 6	Ethernet - 002	Ethernet - 001	N5860-48SC-Endpoint Set-1 - Flow Group 0002	97.19	97.19	934495.5	9569.23	Tx : 18689904 Rx : 18689904 Loss : 0 Loss% : 0.000
Trial: 1 / FS: 1280 / Iter: 7	Ethernet - 001	Ethernet - 002	N5860-48SC-Endpoint Set-1 - Flow Group 0001	98.59	98.59	948016.8	9707.69	Tx : 18960337 Rx : 18960337 Loss : 0 Loss% : 0.000

Trial: 1 / FS: 1280 / Iter: 7	Ethernet - 002	Ethernet - 001	N5860-48SC-Endpoint Set-1 - Flow Group 0002	98.59	98.59	948016.8	9707.69	Tx : 18960337 Rx : 18960337 Loss : 0 Loss% : 0.000
Trial: 1 / FS: 1280 / Iter: 8	Ethernet - 001	Ethernet - 002	N5860-48SC-Endpoint Set-1 - Flow Group 0001	99.30	99.30	954777.8	9776.93	Tx : 19095553 Rx : 19095553 Loss : 0 Loss% : 0.000
Trial: 1 / FS: 1280 / Iter: 8	Ethernet - 002	Ethernet - 001	N5860-48SC-Endpoint Set-1 - Flow Group 0002	99.30	99.30	954777.8	9776.93	Tx : 19095553 Rx : 19095553 Loss : 0 Loss% : 0.000
Trial: 1 / FS: 1280 / Iter: 9	Ethernet - 001	Ethernet - 002	N5860-48SC-Endpoint Set-1 - Flow Group 0001	100.00	100.00	961538.5	9846.15	Tx : 19230769 Rx : 19230769 Loss : 0 Loss% : 0.000
Trial: 1 / FS: 1280 / Iter: 9	Ethernet - 002	Ethernet - 001	N5860-48SC-Endpoint Set-1 - Flow Group 0002	100.00	100.00	961538.5	9846.15	Tx : 19230769 Rx : 19230769 Loss : 0 Loss% : 0.000
Trial: 1 / FS: 1518 / Iter: 1	Ethernet - 001	Ethernet - 002	N5860-48SC-Endpoint Set-1 - Flow Group 0001	10.00	10.00	81274.4	987.00	Tx : 1625488 Rx : 1625488 Loss : 0 Loss% : 0.000
Trial: 1 / FS: 1518 / Iter: 1	Ethernet - 002	Ethernet - 001	N5860-48SC-Endpoint Set-1 - Flow Group 0002	10.00	10.00	81274.4	987.00	Tx : 1625488 Rx : 1625488 Loss : 0 Loss% : 0.000
Trial: 1 / FS: 1518 / Iter: 2	Ethernet - 001	Ethernet - 002	N5860-48SC-Endpoint Set-1 - Flow Group 0001	55.00	55.00	447009.2	5428.48	Tx : 8940182 Rx : 8940182 Loss : 0 Loss% : 0.000
Trial: 1 / FS: 1518 / Iter: 2	Ethernet - 002	Ethernet - 001	N5860-48SC-Endpoint Set-1 - Flow Group 0002	55.00	55.00	447009.2	5428.48	Tx : 8940182 Rx : 8940182 Loss : 0 Loss% : 0.000
Trial: 1 / FS: 1518 / Iter: 3	Ethernet - 001	Ethernet - 002	N5860-48SC-Endpoint Set-1 - Flow Group 0001	77.50	77.50	629876.6	7649.22	Tx : 12597529 Rx : 12597529 Loss : 0 Loss% : 0.000
Trial: 1 / FS: 1518 / Iter: 3	Ethernet - 002	Ethernet - 001	N5860-48SC-Endpoint Set-1 - Flow Group 0002	77.50	77.50	629876.6	7649.22	Tx : 12597529 Rx : 12597529 Loss : 0 Loss% : 0.000
Trial: 1 / FS: 1518 / Iter: 4	Ethernet - 001	Ethernet - 002	N5860-48SC-Endpoint Set-1 - Flow Group 0001	88.75	88.75	721310.4	8759.59	Tx : 14426203 Rx : 14426203 Loss : 0 Loss% : 0.000
Trial: 1 / FS: 1518 / Iter: 4	Ethernet - 002	Ethernet - 001	N5860-48SC-Endpoint Set-1 - Flow Group 0002	88.75	88.75	721310.4	8759.59	Tx : 14426203 Rx : 14426203 Loss : 0 Loss% : 0.000
Trial: 1 / FS: 1518 / Iter: 5	Ethernet - 001	Ethernet - 002	N5860-48SC-Endpoint Set-1 - Flow Group 0001	94.38	94.38	767027.4	9314.78	Tx : 15340540 Rx : 15340540 Loss : 0 Loss% : 0.000
Trial: 1 / FS: 1518 / Iter: 5	Ethernet - 002	Ethernet - 001	N5860-48SC-Endpoint Set-1 - Flow Group 0002	94.38	94.38	767027.4	9314.78	Tx : 15340540 Rx : 15340540 Loss : 0 Loss% : 0.000

Trial: 1 / FS: 1518 / Iter: 6	Ethernet - 001	Ethernet - 002	N5860-48SC-Endpoint Set-1 - Flow Group 0001	97.19	97.19	789885.5	9592.37	Tx : Rx : Loss : Loss% :	15797708 15797708 0 0.000
Trial: 1 / FS: 1518 / Iter: 6	Ethernet - 002	Ethernet - 001	N5860-48SC-Endpoint Set-1 - Flow Group 0002	97.19	97.19	789885.5	9592.37	Tx : Rx : Loss : Loss% :	15797708 15797708 0 0.000
Trial: 1 / FS: 1518 / Iter: 7	Ethernet - 001	Ethernet - 002	N5860-48SC-Endpoint Set-1 - Flow Group 0001	98.59	98.59	801314.7	9731.17	Tx : Rx : Loss : Loss% :	16026292 16026292 0 0.000
Trial: 1 / FS: 1518 / Iter: 7	Ethernet - 002	Ethernet - 001	N5860-48SC-Endpoint Set-1 - Flow Group 0002	98.59	98.59	801314.7	9731.17	Tx : Rx : Loss : Loss% :	16026292 16026292 0 0.000
Trial: 1 / FS: 1518 / Iter: 8	Ethernet - 001	Ethernet - 002	N5860-48SC-Endpoint Set-1 - Flow Group 0001	99.30	99.30	807029.2	9800.56	Tx : Rx : Loss : Loss% :	16140584 16140584 0 0.000
Trial: 1 / FS: 1518 / Iter: 8	Ethernet - 002	Ethernet - 001	N5860-48SC-Endpoint Set-1 - Flow Group 0002	99.30	99.30	807029.2	9800.56	Tx : Rx : Loss : Loss% :	16140584 16140584 0 0.000
Trial: 1 / FS: 1518 / Iter: 9	Ethernet - 001	Ethernet - 002	N5860-48SC-Endpoint Set-1 - Flow Group 0001	100.00	100.00	812743.8	9869.96	Tx : Rx : Loss : Loss% :	16254876 16254876 0 0.000
Trial: 1 / FS: 1518 / Iter: 9	Ethernet - 002	Ethernet - 001	N5860-48SC-Endpoint Set-1 - Flow Group 0002	100.00	100.00	812743.8	9869.96	Tx : Rx : Loss : Loss% :	16254876 16254876 0 0.000

**RFC2544 - Throughput/Latency - Iteration Statistics - Part 2 of 2**

Trial / Framesize/Iteration	Tx Port	Rx Port	Flow Group	Min Latency (ns)	Max Latency (ns)	Avg Latency (ns)
Trial: 1 / FS: 64 / Iter: 1	Ethernet - 001	Ethernet - 002	N5860-48SC-Endpoint Set-1 - Flow Group 0001	912	1045	936.00
Trial: 1 / FS: 64 / Iter: 1	Ethernet - 002	Ethernet - 001	N5860-48SC-Endpoint Set-1 - Flow Group 0002	915	960	939.00
Trial: 1 / FS: 64 / Iter: 2	Ethernet - 001	Ethernet - 002	N5860-48SC-Endpoint Set-1 - Flow Group 0001	912	1152	938.00
Trial: 1 / FS: 64 / Iter: 2	Ethernet - 002	Ethernet - 001	N5860-48SC-Endpoint Set-1 - Flow Group 0002	910	1177	935.00
Trial: 1 / FS: 64 / Iter: 3	Ethernet - 001	Ethernet - 002	N5860-48SC-Endpoint Set-1 - Flow Group 0001	912	1182	938.00
Trial: 1 / FS: 64 / Iter: 3	Ethernet - 002	Ethernet - 001	N5860-48SC-Endpoint Set-1 - Flow Group 0002	910	1057	936.00
Trial: 1 / FS: 64 / Iter: 4	Ethernet - 001	Ethernet - 002	N5860-48SC-Endpoint Set-1 - Flow Group 0001	917	1177	939.00
Trial: 1 / FS: 64 / Iter: 4	Ethernet - 002	Ethernet - 001	N5860-48SC-Endpoint Set-1 - Flow Group 0002	917	1055	937.00
Trial: 1 / FS: 64 / Iter: 5	Ethernet - 001	Ethernet - 002	N5860-48SC-Endpoint Set-1 - Flow Group 0001	920	1060	942.00
Trial: 1 / FS: 64 / Iter: 5	Ethernet - 002	Ethernet - 001	N5860-48SC-Endpoint Set-1 - Flow Group 0002	917	1175	939.00
Trial: 1 / FS: 64 / Iter: 6	Ethernet - 001	Ethernet - 002	N5860-48SC-Endpoint Set-1 - Flow Group 0001	922	1067	944.00
Trial: 1 / FS: 64 / Iter: 6	Ethernet - 002	Ethernet - 001	N5860-48SC-Endpoint Set-1 - Flow Group 0002	922	1185	942.00
Trial: 1 / FS: 64 / Iter: 7	Ethernet - 001	Ethernet - 002	N5860-48SC-Endpoint Set-1 - Flow Group 0001	927	1065	946.00
Trial: 1 / FS: 64 / Iter: 7	Ethernet - 002	Ethernet - 001	N5860-48SC-Endpoint Set-1 - Flow Group 0002	920	1190	944.00
Trial: 1 / FS: 64 / Iter: 8	Ethernet - 001	Ethernet - 002	N5860-48SC-Endpoint Set-1 - Flow Group 0001	930	1267	947.00
Trial: 1 / FS: 64 / Iter: 8	Ethernet - 002	Ethernet - 001	N5860-48SC-Endpoint Set-1 - Flow Group 0002	927	1277	945.00
Trial: 1 / FS: 64 / Iter: 9	Ethernet - 001	Ethernet - 002	N5860-48SC-Endpoint Set-1 - Flow Group 0001	935	1285	948.00
Trial: 1 / FS: 64 / Iter: 9	Ethernet - 002	Ethernet - 001	N5860-48SC-Endpoint Set-1 - Flow Group 0002	935	1280	950.00
Trial: 1 / FS: 128 / Iter: 1	Ethernet - 001	Ethernet - 002	N5860-48SC-Endpoint Set-1 - Flow Group 0001	907	962	931.00

Trial: 1 / FS: 128 / Iter: 1	Ethernet - 002	Ethernet - 001	N5860-48SC-Endpoint Set-1 - Flow Group 0002	902	1037	928.00
Trial: 1 / FS: 128 / Iter: 2	Ethernet - 001	Ethernet - 002	N5860-48SC-Endpoint Set-1 - Flow Group 0001	905	1077	930.00
Trial: 1 / FS: 128 / Iter: 2	Ethernet - 002	Ethernet - 001	N5860-48SC-Endpoint Set-1 - Flow Group 0002	902	1055	928.00
Trial: 1 / FS: 128 / Iter: 3	Ethernet - 001	Ethernet - 002	N5860-48SC-Endpoint Set-1 - Flow Group 0001	905	1055	930.00
Trial: 1 / FS: 128 / Iter: 3	Ethernet - 002	Ethernet - 001	N5860-48SC-Endpoint Set-1 - Flow Group 0002	902	1132	928.00
Trial: 1 / FS: 128 / Iter: 4	Ethernet - 001	Ethernet - 002	N5860-48SC-Endpoint Set-1 - Flow Group 0001	907	1057	931.00
Trial: 1 / FS: 128 / Iter: 4	Ethernet - 002	Ethernet - 001	N5860-48SC-Endpoint Set-1 - Flow Group 0002	905	1165	929.00
Trial: 1 / FS: 128 / Iter: 5	Ethernet - 001	Ethernet - 002	N5860-48SC-Endpoint Set-1 - Flow Group 0001	912	1170	933.00
Trial: 1 / FS: 128 / Iter: 5	Ethernet - 002	Ethernet - 001	N5860-48SC-Endpoint Set-1 - Flow Group 0002	910	1162	931.00
Trial: 1 / FS: 128 / Iter: 6	Ethernet - 001	Ethernet - 002	N5860-48SC-Endpoint Set-1 - Flow Group 0001	912	1182	934.00
Trial: 1 / FS: 128 / Iter: 6	Ethernet - 002	Ethernet - 001	N5860-48SC-Endpoint Set-1 - Flow Group 0002	910	1165	932.00
Trial: 1 / FS: 128 / Iter: 7	Ethernet - 001	Ethernet - 002	N5860-48SC-Endpoint Set-1 - Flow Group 0001	917	1185	938.00
Trial: 1 / FS: 128 / Iter: 7	Ethernet - 002	Ethernet - 001	N5860-48SC-Endpoint Set-1 - Flow Group 0002	915	1175	936.00
Trial: 1 / FS: 128 / Iter: 8	Ethernet - 001	Ethernet - 002	N5860-48SC-Endpoint Set-1-Flow Group 0001	920	1190	940.00
Trial: 1 / FS: 128 / Iter: 8	Ethernet - 002	Ethernet - 001	N5860-48SC-Endpoint Set-1 - Flow Group 0002	920	1065	938.00
Trial: 1 / FS: 128 / Iter: 9	Ethernet - 001	Ethernet - 002	N5860-48SC-Endpoint Set-1 - Flow Group 0001	925	1275	948.00
Trial: 1 / FS: 128 / Iter: 9	Ethernet - 002	Ethernet - 001	N5860-48SC-Endpoint Set-1 - Flow Group 0002	925	1282	942.00
Trial: 1 / FS: 256 / Iter: 1	Ethernet - 001	Ethernet - 002	N5860-48SC-Endpoint Set-1 - Flow Group 0001	877	920	894.00
Trial: 1 / FS: 256 / Iter: 1	Ethernet - 002	Ethernet - 001	N5860-48SC-Endpoint Set-1 - Flow Group 0002	867	912	887.00
Trial: 1 / FS: 256 / Iter: 2	Ethernet - 001	Ethernet - 002	N5860-48SC-Endpoint Set-1 - Flow Group 0001	870	1217	895.00
Trial: 1 / FS: 256 / Iter: 2	Ethernet - 002	Ethernet - 001	N5860-48SC-Endpoint Set-1 - Flow Group 0002	867	1190	893.00

Trial: 1 / FS: 256 / Iter: 3	Ethernet - 001	Ethernet - 002	N5860-48SC-Endpoint Set-1 - Flow Group 0001	870	1075	895.00
Trial: 1 / FS: 256 / Iter: 3	Ethernet - 002	Ethernet - 001	N5860-48SC-Endpoint Set-1 - Flow Group 0002	867	1055	893.00
Trial: 1 / FS: 256 / Iter: 4	Ethernet - 001	Ethernet - 002	N5860-48SC-Endpoint Set-1 - Flow Group 0001	870	1100	895.00
Trial: 1 / FS: 256 / Iter: 4	Ethernet - 002	Ethernet - 001	N5860-48SC-Endpoint Set-1 - Flow Group 0002	867	1102	893.00
Trial: 1 / FS: 256 / Iter: 5	Ethernet - 001	Ethernet - 002	N5860-48SC-Endpoint Set-1 - Flow Group 0001	872	1127	895.00
Trial: 1 / FS: 256 / Iter: 5	Ethernet - 002	Ethernet - 001	N5860-48SC-Endpoint Set-1 - Flow Group 0002	870	1132	893.00
Trial: 1 / FS: 256 / Iter: 6	Ethernet - 001	Ethernet - 002	N5860-48SC-Endpoint Set-1 - Flow Group 0001	872	1125	897.00
Trial: 1 / FS: 256 / Iter: 6	Ethernet - 002	Ethernet - 001	N5860-48SC-Endpoint Set-1 - Flow Group 0002	870	1012	895.00
Trial: 1 / FS: 256 / Iter: 7	Ethernet - 001	Ethernet - 002	N5860-48SC-Endpoint Set-1 - Flow Group 0001	880	1147	899.00
Trial: 1 / FS: 256 / Iter: 7	Ethernet - 002	Ethernet - 001	N5860-48SC-Endpoint Set-1 - Flow Group 0002	877	1025	897.00
Trial: 1 / FS: 256 / Iter: 8	Ethernet - 001	Ethernet - 002	N5860-48SC-Endpoint Set-1 - Flow Group 0001	882	1025	902.00
Trial: 1 / FS: 256 / Iter: 8	Ethernet - 002	Ethernet - 001	N5860-48SC-Endpoint Set-1 - Flow Group 0002	880	1020	899.00
Trial: 1 / FS: 256 / Iter: 9	Ethernet - 001	Ethernet - 002	N5860-48SC-Endpoint Set-1 - Flow Group 0001	892	1032	907.00
Trial: 1 / FS: 256 / Iter: 9	Ethernet - 002	Ethernet - 001	N5860-48SC-Endpoint Set-1 - Flow Group 0002	890	1147	906.00
Trial: 1 / FS: 512 / Iter: 1	Ethernet - 001	Ethernet - 002	N5860-48SC-Endpoint Set-1 - Flow Group 0001	667	725	697.00
Trial: 1 / FS: 512 / Iter: 1	Ethernet - 002	Ethernet - 001	N5860-48SC-Endpoint Set-1 - Flow Group 0002	667	720	694.00
Trial: 1 / FS: 512 / Iter: 2	Ethernet - 001	Ethernet - 002	N5860-48SC-Endpoint Set-1 - Flow Group 0001	665	900	696.00
Trial: 1 / FS: 512 / Iter: 2	Ethernet - 002	Ethernet - 001	N5860-48SC-Endpoint Set-1 - Flow Group 0002	665	950	695.00
Trial: 1 / FS: 512 / Iter: 3	Ethernet - 001	Ethernet - 002	N5860-48SC-Endpoint Set-1 - Flow Group 0001	665	992	696.00
Trial: 1 / FS: 512 / Iter: 3	Ethernet - 002	Ethernet - 001	N5860-48SC-Endpoint Set-1 - Flow Group 0002	665	892	695.00
Trial: 1 / FS: 512 / Iter: 4	Ethernet - 001	Ethernet - 002	N5860-48SC-Endpoint Set-1 - Flow Group 0001	665	930	696.00

Trial: 1 / FS: 512 / Iter: 4	Ethernet - 002	Ethernet - 001	N5860-48SC-Endpoint Set-1 - Flow Group 0002	667	802	695.00
Trial: 1 / FS: 512 / Iter: 5	Ethernet - 001	Ethernet - 002	N5860-48SC-Endpoint Set-1 - Flow Group 0001	667	917	697.00
Trial: 1 / FS: 512 / Iter: 5	Ethernet - 002	Ethernet - 001	N5860-48SC-Endpoint Set-1 - Flow Group 0002	667	795	694.00
Trial: 1 / FS: 512 / Iter: 6	Ethernet - 001	Ethernet - 002	N5860-48SC-Endpoint Set-1 - Flow Group 0001	672	802	697.00
Trial: 1 / FS: 512 / Iter: 6	Ethernet - 002	Ethernet - 001	N5860-48SC-Endpoint Set-1 - Flow Group 0002	670	937	696.00
Trial: 1 / FS: 512 / Iter: 7	Ethernet - 001	Ethernet - 002	N5860-48SC-Endpoint Set-1 - Flow Group 0001	677	815	699.00
Trial: 1 / FS: 512 / Iter: 7	Ethernet - 002	Ethernet - 001	N5860-48SC-Endpoint Set-1 - Flow Group 0002	677	935	698.00
Trial: 1 / FS: 512 / Iter: 8	Ethernet - 001	Ethernet - 002	N5860-48SC-Endpoint Set-1 - Flow Group 0001	680	825	702.00
Trial: 1 / FS: 512 / Iter: 8	Ethernet - 002	Ethernet - 001	N5860-48SC-Endpoint Set-1 - Flow Group 0002	682	927	700.00
Trial: 1 / FS: 512 / Iter: 9	Ethernet - 001	Ethernet - 002	N5860-48SC-Endpoint Set-1 - Flow Group 0001	695	962	714.00
Trial: 1 / FS: 512 / Iter: 9	Ethernet - 002	Ethernet - 001	N5860-48SC-Endpoint Set-1 - Flow Group 0002	690	957	709.00
Trial: 1 / FS: 1024 / Iter: 1	Ethernet - 001	Ethernet - 002	N5860-48SC-Endpoint Set-1 - Flow Group 0001	452	505	479.00
Trial: 1 / FS: 1024 / Iter: 1	Ethernet - 002	Ethernet - 001	N5860-48SC-Endpoint Set-1 - Flow Group 0002	445	495	471.00
Trial: 1 / FS: 1024 / Iter: 2	Ethernet - 001	Ethernet - 002	N5860-48SC-Endpoint Set-1 - Flow Group 0001	447	570	475.00
Trial: 1 / FS: 1024 / Iter: 2	Ethernet - 002	Ethernet - 001	N5860-48SC-Endpoint Set-1 - Flow Group 0002	445	550	472.00
Trial: 1 / FS: 1024 / Iter: 3	Ethernet - 001	Ethernet - 002	N5860-48SC-Endpoint Set-1 - Flow Group 0001	447	642	474.00
Trial: 1 / FS: 1024 / Iter: 3	Ethernet - 002	Ethernet - 001	N5860-48SC-Endpoint Set-1 - Flow Group 0002	442	572	472.00
Trial: 1 / FS: 1024 / Iter: 4	Ethernet - 001	Ethernet - 002	N5860-48SC-Endpoint Set-1 - Flow Group 0001	447	705	474.00
Trial: 1 / FS: 1024 / Iter: 4	Ethernet - 002	Ethernet - 001	N5860-48SC-Endpoint Set-1 - Flow Group 0002	445	690	472.00
Trial: 1 / FS: 1024 / Iter: 5	Ethernet - 001	Ethernet - 002	N5860-48SC-Endpoint Set-1 - Flow Group 0001	447	570	475.00
Trial: 1 / FS: 1024 / Iter: 5	Ethernet - 002	Ethernet - 001	N5860-48SC-Endpoint Set-1 - Flow Group 0002	442	645	472.00

Trial: 1 / FS: 1024 / Iter: 6	Ethernet - 001	Ethernet - 002	N5860-48SC-Endpoint Set-1 - Flow Group 0001	447	580	475.00
Trial: 1 / FS: 1024 / Iter: 6	Ethernet - 002	Ethernet - 001	N5860-48SC-Endpoint Set-1 - Flow Group 0002	442	695	472.00
Trial: 1 / FS: 1024 / Iter: 7	Ethernet - 001	Ethernet - 002	N5860-48SC-Endpoint Set-1 - Flow Group 0001	447	702	475.00
Trial: 1 / FS: 1024 / Iter: 7	Ethernet - 002	Ethernet - 001	N5860-48SC-Endpoint Set-1 - Flow Group 0002	447	697	473.00
Trial: 1 / FS: 1024 / Iter: 8	Ethernet - 001	Ethernet - 002	N5860-48SC-Endpoint Set-1 - Flow Group 0001	450	705	476.00
Trial: 1 / FS: 1024 / Iter: 8	Ethernet - 002	Ethernet - 001	N5860-48SC-Endpoint Set-1 - Flow Group 0002	447	710	475.00
Trial: 1 / FS: 1024 / Iter: 9	Ethernet - 001	Ethernet - 002	N5860-48SC-Endpoint Set-1 - Flow Group 0001	472	730	490.00
Trial: 1 / FS: 1024 / Iter: 9	Ethernet - 002	Ethernet - 001	N5860-48SC-Endpoint Set-1 - Flow Group 0002	472	612	487.00
Trial: 1 / FS: 1280 / Iter: 1	Ethernet - 001	Ethernet - 002	N5860-48SC-Endpoint Set-1 - Flow Group 0001	450	502	474.00
Trial: 1 / FS: 1280 / Iter: 1	Ethernet - 002	Ethernet - 001	N5860-48SC-Endpoint Set-1 - Flow Group 0002	437	502	471.00
Trial: 1 / FS: 1280 / Iter: 2	Ethernet - 001	Ethernet - 002	N5860-48SC-Endpoint Set-1 - Flow Group 0001	447	610	473.00
Trial: 1 / FS: 1280 / Iter: 2	Ethernet - 002	Ethernet - 001	N5860-48SC-Endpoint Set-1 - Flow Group 0002	440	560	471.00
Trial: 1 / FS: 1280 / Iter: 3	Ethernet - 001	Ethernet - 002	N5860-48SC-Endpoint Set-1 - Flow Group 0001	440	505	473.00
Trial: 1 / FS: 1280 / Iter: 3	Ethernet - 002	Ethernet - 001	N5860-48SC-Endpoint Set-1 - Flow Group 0002	440	585	472.00
Trial: 1 / FS: 1280 / Iter: 4	Ethernet - 001	Ethernet - 002	N5860-48SC-Endpoint Set-1 - Flow Group 0001	440	665	473.00
Trial: 1 / FS: 1280 / Iter: 4	Ethernet - 002	Ethernet - 001	N5860-48SC-Endpoint Set-1 - Flow Group 0002	440	667	472.00
Trial: 1 / FS: 1280 / Iter: 5	Ethernet - 001	Ethernet - 002	N5860-48SC-Endpoint Set-1 - Flow Group 0001	442	657	473.00
Trial: 1 / FS: 1280 / Iter: 5	Ethernet - 002	Ethernet - 001	N5860-48SC-Endpoint Set-1 - Flow Group 0002	437	655	472.00
Trial: 1 / FS: 1280 / Iter: 6	Ethernet - 001	Ethernet - 002	N5860-48SC-Endpoint Set-1 - Flow Group 0001	442	685	473.00
Trial: 1 / FS: 1280 / Iter: 6	Ethernet - 002	Ethernet - 001	N5860-48SC-Endpoint Set-1 - Flow Group 0002	440	677	472.00
Trial: 1 / FS: 1280 / Iter: 7	Ethernet - 001	Ethernet - 002	N5860-48SC-Endpoint Set-1 - Flow Group 0001	445	710	473.00



Trial: 1 / FS: 1280 / Iter: 7	Ethernet - 002	Ethernet - 001	N5860-48SC-Endpoint Set-1 - Flow Group 0002	442	697	472.00
Trial: 1 / FS: 1280 / Iter: 8	Ethernet - 001	Ethernet - 002	N5860-48SC-Endpoint Set-1 - Flow Group 0001	455	707	475.00
Trial: 1 / FS: 1280 / Iter: 8	Ethernet - 002	Ethernet - 001	N5860-48SC-Endpoint Set-1 - Flow Group 0002	452	590	474.00
Trial: 1 / FS: 1280 / Iter: 9	Ethernet - 001	Ethernet - 002	N5860-48SC-Endpoint Set-1 - Flow Group 0001	467	732	492.00
Trial: 1 / FS: 1280 / Iter: 9	Ethernet - 002	Ethernet - 001	N5860-48SC-Endpoint Set-1 - Flow Group 0002	475	615	489.00
Trial: 1 / FS: 1518 / Iter: 1	Ethernet - 001	Ethernet - 002	N5860-48SC-Endpoint Set-1 - Flow Group 0001	450	555	476.00
Trial: 1 / FS: 1518 / Iter: 1	Ethernet - 002	Ethernet - 001	N5860-48SC-Endpoint Set-1 - Flow Group 0002	447	505	475.00
Trial: 1 / FS: 1518 / Iter: 2	Ethernet - 001	Ethernet - 002	N5860-48SC-Endpoint Set-1 - Flow Group 0001	450	510	476.00
Trial: 1 / FS: 1518 / Iter: 2	Ethernet - 002	Ethernet - 001	N5860-48SC-Endpoint Set-1 - Flow Group 0002	445	505	475.00
Trial: 1 / FS: 1518 / Iter: 3	Ethernet - 001	Ethernet - 002	N5860-48SC-Endpoint Set-1 - Flow Group 0001	450	547	477.00
Trial: 1 / FS: 1518 / Iter: 3	Ethernet - 002	Ethernet - 001	N5860-48SC-Endpoint Set-1 - Flow Group 0002	442	622	474.00
Trial: 1 / FS: 1518 / Iter: 4	Ethernet - 001	Ethernet - 002	N5860-48SC-Endpoint Set-1 - Flow Group 0001	450	555	476.00
Trial: 1 / FS: 1518 / Iter: 4	Ethernet - 002	Ethernet - 001	N5860-48SC-Endpoint Set-1 - Flow Group 0002	445	562	475.00
Trial: 1 / FS: 1518 / Iter: 5	Ethernet - 001	Ethernet - 002	N5860-48SC-Endpoint Set-1 - Flow Group 0001	450	647	477.00
Trial: 1 / FS: 1518 / Iter: 5	Ethernet - 002	Ethernet - 001	N5860-48SC-Endpoint Set-1 - Flow Group 0002	442	545	474.00
Trial: 1 / FS: 1518 / Iter: 6	Ethernet - 001	Ethernet - 002	N5860-48SC-Endpoint Set-1 - Flow Group 0001	450	665	477.00
Trial: 1 / FS: 1518 / Iter: 6	Ethernet - 002	Ethernet - 001	N5860-48SC-Endpoint Set-1 - Flow Group 0002	442	567	474.00
Trial: 1 / FS: 1518 / Iter: 7	Ethernet - 001	Ethernet - 002	N5860-48SC-Endpoint Set-1 - Flow Group 0001	450	577	476.00
Trial: 1 / FS: 1518 / Iter: 7	Ethernet - 002	Ethernet - 001	N5860-48SC-Endpoint Set-1 - Flow Group 0002	442	687	474.00
Trial: 1 / FS: 1518 / Iter: 8	Ethernet - 001	Ethernet - 002	N5860-48SC-Endpoint Set-1 - Flow Group 0001	455	597	478.00
Trial: 1 / FS: 1518 / Iter: 8	Ethernet - 002	Ethernet - 001	N5860-48SC-Endpoint Set-1 - Flow Group 0002	452	707	477.00

Trial: 1 / FS: 1518 / Iter: 9	Ethernet - 001	Ethernet - 002	N5860-48SC-Endpoint Set-1 - Flow Group 0001	475	617	492.00
Trial: 1 / FS: 1518 / Iter: 9	Ethernet - 002	Ethernet- 001	N5860-48SC-Endpoint Set-1 - Flow Group 0002	472	735	489.00

**Theoretical maximum Frame Rates (frames/second) for different frame sizes (bytes)**

Speed	64	128	256	512	1024	1280	1518
10 Mbps	14881	8446	4529	2350	1198	962	813
100 Mbps	148810	84460	45290	23497	11973	9616	8128
1000 Mbps	1488096	844595	452899	234963	119732	96154	81275
10 Gbps	14880952	8445946	4528986	2349625	1197318	961539	812744
25 Gbps	37202380	21114864	11322463	5874060	2993295	2403846	2031859
40 Gbps	59523809	33783783	18115942	9398496	4789272	3846153	3250975
100 Gbps	148809523	84459459	45289855	23496240	11973180	9615384	8127438
155 Mbps (Oc - 3)	288000	145116	72840	36491	18263	14614	12324
622 Mbps (Oc - 12)	1152000	580465	291362	145965	73054	58454	49296
2488 Mbps (Oc - 48)	4608000	2321860	1165447	583860	292215	233817	197182
9952 Mbps (Oc - 192)	18432000	9287442	4661790	2335439	1168859	935270	788730