



Cable ID: 64035

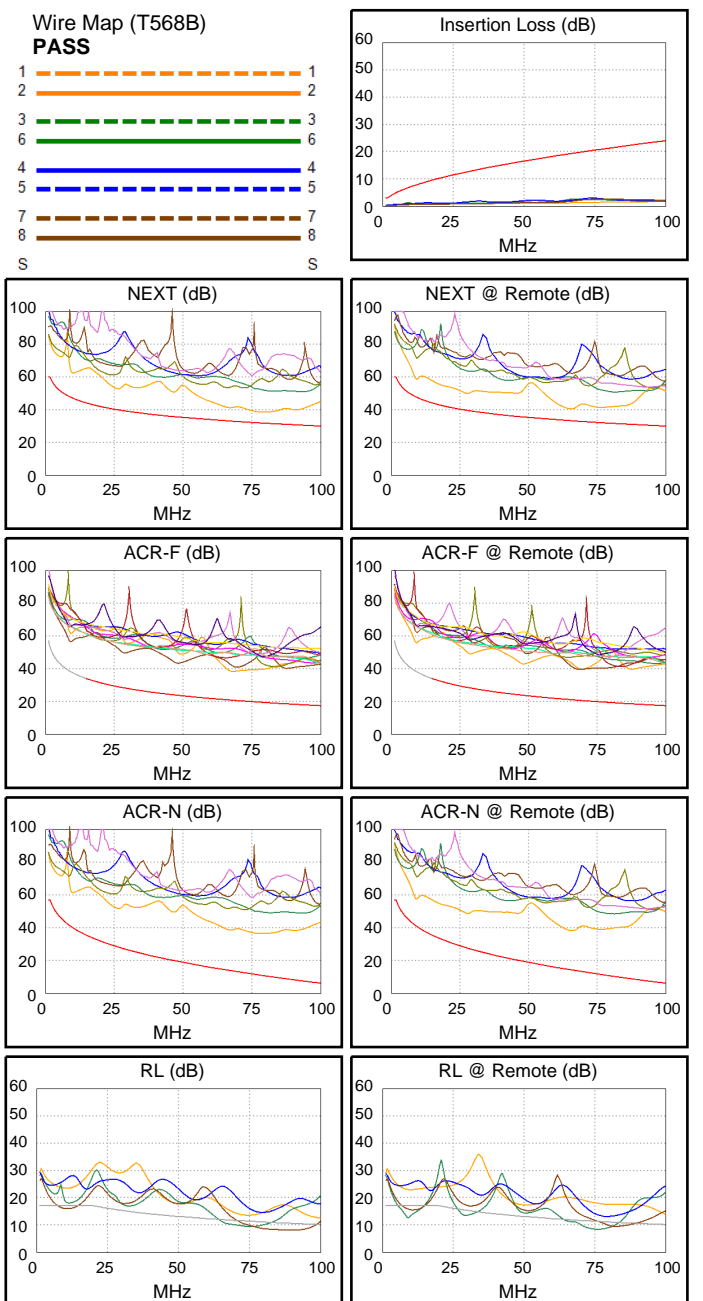
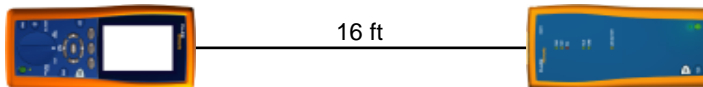
Date / Time: 02/14/2017 10:16:36 AM
Headroom 6.7 dB (NEXT 12-36)
Test Limit: TIA Cat 5e Channel
 Cable Type: Cat 5e U/UTP
 NVP: 69.0%

Operator: Your Name
 Software Version: 2.7800
 Limits Version: 1.9500
 Calibration Date:
 Main (Tester): 11/01/2016
 Remote (Tester): 11/01/2016

Test Summary: PASS

Model: DTX-1800
 Main S/N: 3178039
 Remote S/N: 3178046
 Main Adapter: DTX-CHA002
 Remote Adapter: DTX-CHA002

Length (ft), Limit 328	[Pair 36]	16
Prop. Delay (ns), Limit 555	[Pair 12]	24
Delay Skew (ns), Limit 50	[Pair 12]	1
Resistance (ohms)	[Pair 45]	2.0
Insertion Loss Margin (dB)	[Pair 45]	17.7
Frequency (MHz)	[Pair 45]	75.3
Limit (dB)	[Pair 45]	20.6



Worst Case Margin Worst Case Value

PASS	MAIN	SR	MAIN	SR
Worst Pair	12-36	12-36	12-36	12-36
NEXT (dB)	6.7	7.2	6.7	7.2
Freq. (MHz)	77.8	65.0	77.8	65.0
Limit (dB)	32.0	33.3	32.0	33.3
Worst Pair	12	36	12	12
PS NEXT (dB)	9.5	10.1	9.5	10.2
Freq. (MHz)	77.8	65.0	77.8	65.0
Limit (dB)	29.0	30.3	29.0	30.2

PASS	MAIN	SR	MAIN	SR
Worst Pair	12-36	12-36	12-36	36-12
ACR-F (dB)	17.4	17.4	17.4	18.8
Freq. (MHz)	67.8	8.9	68.3	68.3
Limit (dB)	20.8	38.4	20.7	20.7
Worst Pair	36	12	36	12
PS ACR-F (dB)	19.9	20.1	19.9	20.1
Freq. (MHz)	67.8	67.8	68.3	67.8
Limit (dB)	17.8	17.8	17.7	17.8

N/A	MAIN	SR	MAIN	SR
Worst Pair	12-36	12-36	12-36	12-36
ACR-N (dB)	21.2	16.2	25.4	24.0
Freq. (MHz)	9.4	8.9	77.8	65.8
Limit (dB)	40.6	41.2	11.0	14.1
Worst Pair	36	36	36	36
PS ACR-N (dB)	23.9	19.0	28.4	26.9
Freq. (MHz)	9.4	8.9	77.8	65.8
Limit (dB)	37.6	38.2	8.0	11.1

N/A	MAIN	SR	MAIN	SR
Worst Pair	78	36	78	36
RL (dB)	-2.7	-4.5	-2.7	-3.0
Freq. (MHz)	84.3	8.9	86.3	75.0
Limit (dB)	10.8	17.0	10.7	11.3

Compliant Network Standards:
 10BASE-T 100BASE-TX 100BASE-T4
 1000BASE-T ATM-25 ATM-51
 ATM-155 100VG-AnyLan TR-4
 TR-16 Active TR-16 Passive