



Cable ID: 63804

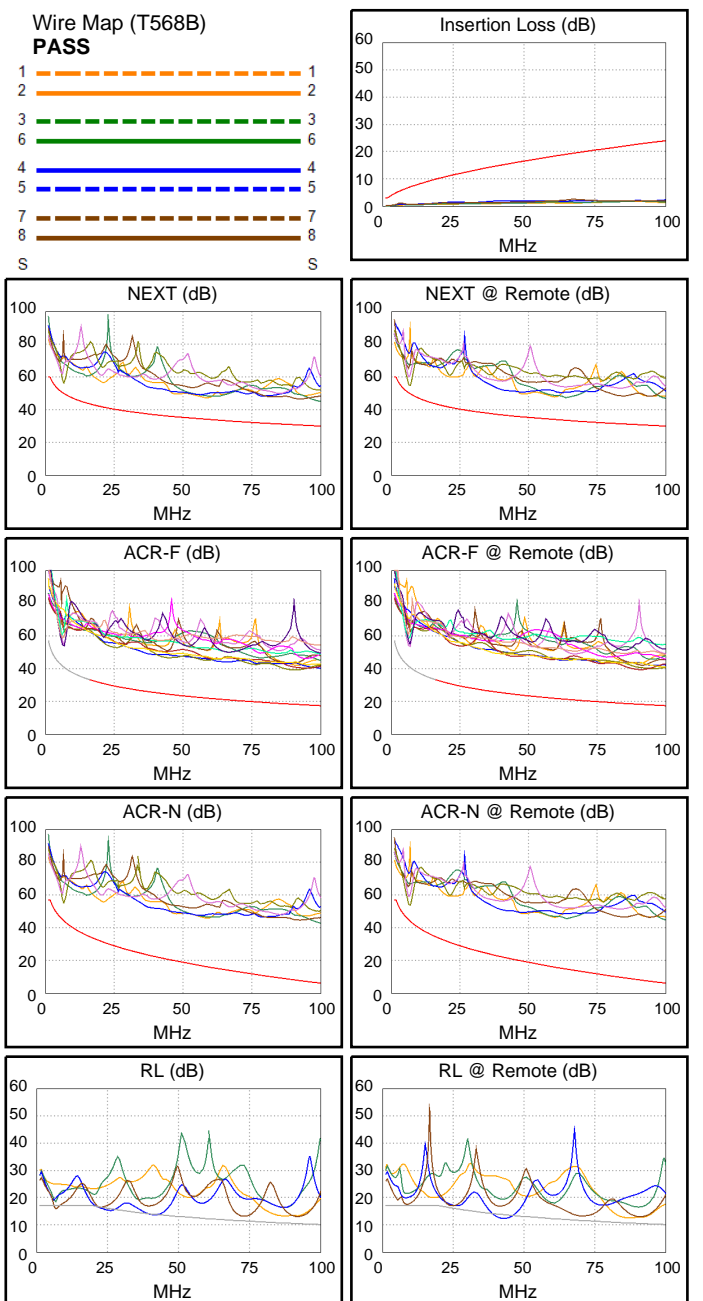
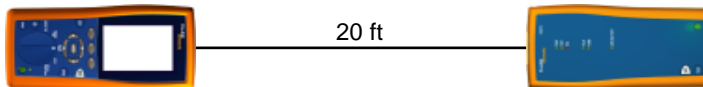
Date / Time: 12/29/2016 01:10:51 PM
Headroom 4.2 dB (NEXT 36-78)
Test Limit: TIA Cat 5e Channel
 Cable Type: Cat 5e U/UTP
 NVP: 69.0%

Operator: Your Name
 Software Version: 2.7800
 Limits Version: 1.9500
 Calibration Date:
 Main (Tester): 11/01/2016
 Remote (Tester): 11/01/2016

Test Summary: PASS

Model: DTX-1800
 Main S/N: 3178039
 Remote S/N: 3178046
 Main Adapter: DTX-CHA002
 Remote Adapter: DTX-CHA002

Length (ft), Limit 328	[Pair 36]	20
Prop. Delay (ns), Limit 555	[Pair 12]	30
Delay Skew (ns), Limit 50	[Pair 12]	1
Resistance (ohms)	[Pair 45]	1.6
Insertion Loss Margin (dB)	[Pair 78]	17.2
Frequency (MHz)	[Pair 78]	69.0
Limit (dB)	[Pair 78]	19.6



Worst Case Margin Worst Case Value

PASS	MAIN	SR	MAIN	SR
Worst Pair	36-78	36-78	12-45	12-45
NEXT (dB)	6.3	4.2	15.0	16.9
Freq. (MHz)	6.5	6.5	99.8	99.8
Limit (dB)	50.1	50.1	30.1	30.1
Worst Pair	78	78	45	12
PS NEXT (dB)	8.6	6.2	16.2	16.6
Freq. (MHz)	6.5	6.5	99.5	99.8
Limit (dB)	47.1	47.1	27.1	27.1

PASS	MAIN	SR	MAIN	SR
Worst Pair	78-36	36-78	36-45	45-36
ACR-F (dB)	12.3	11.9	20.9	21.1
Freq. (MHz)	6.4	6.4	89.8	89.8
Limit (dB)	41.3	41.3	18.3	18.3
Worst Pair	36	78	36	36
PS ACR-F (dB)	14.8	14.2	23.1	22.4
Freq. (MHz)	6.4	6.3	91.0	90.3
Limit (dB)	38.3	38.5	15.2	15.3

N/A	MAIN	SR	MAIN	SR
Worst Pair	36-78	36-78	12-45	12-45
ACR-N (dB)	10.9	8.8	36.8	38.7
Freq. (MHz)	6.5	6.5	99.8	99.8
Limit (dB)	44.4	44.4	6.1	6.1
Worst Pair	78	78	45	12
PS ACR-N (dB)	13.2	10.8	37.9	39.3
Freq. (MHz)	6.4	6.5	99.5	99.8
Limit (dB)	41.6	41.4	3.2	3.1

N/A	MAIN	SR	MAIN	SR
Worst Pair	78	45	78	45
RL (dB)	-1.2	-1.5	2.6	-1.5
Freq. (MHz)	6.8	41.8	91.3	42.8
Limit (dB)	17.0	13.8	10.4	13.7

Compliant Network Standards:
 10BASE-T 100BASE-TX 100BASE-T4
 1000BASE-T ATM-25 ATM-51
 ATM-155 100VG-AnyLan TR-4
 TR-16 Active TR-16 Passive