



Cable ID: 222X 63554

Date / Time: 02/27/2017 11:51:33 AM

Headroom 2.1 dB (NEXT 36-45)

Test Limit: TIA Cat 5e Channel

Cable Type: Cat 5e U/UTP

NVP: 69.0%

Operator: Your Name

Software Version: 2.7800

Limits Version: 1.9500

Calibration Date:

Main (Tester): 11/01/2016

Remote (Tester): 11/01/2016

Test Summary: PASS

Model: DTX-1800

Main S/N: 3178039

Remote S/N: 3178046

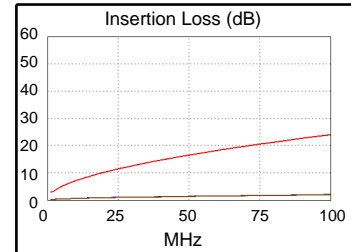
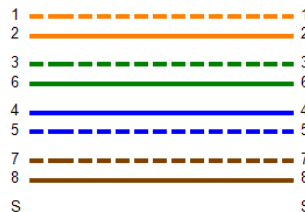
Main Adapter: DTX-CHA002

Remote Adapter: DTX-CHA002

Length (ft), Limit 328	[Pair 12]	23
Prop. Delay (ns), Limit 555	[Pair 36]	35
Delay Skew (ns), Limit 50	[Pair 36]	1
Resistance (ohms)	[Pair 36]	1.6
Insertion Loss Margin (dB)	[Pair 12]	22.0
Frequency (MHz)	[Pair 12]	100.0
Limit (dB)	[Pair 12]	24.0

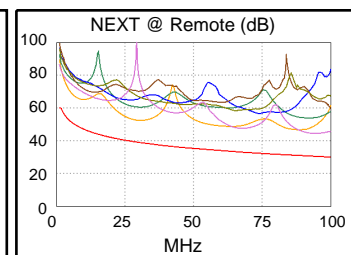
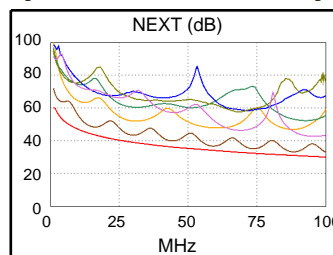
Patch Cable BAD or Patch Cable too short

Wire Map (T568B)
PASS

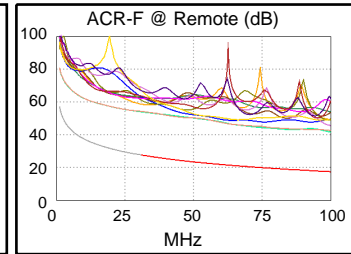
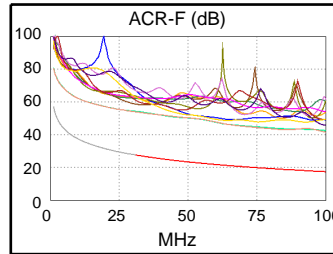


Worst Case Margin Worst Case Value

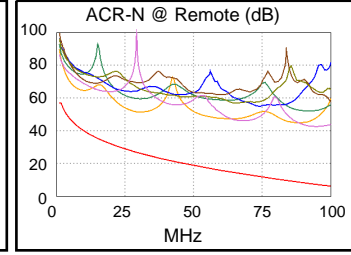
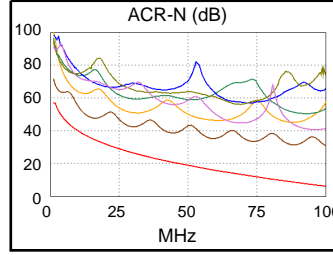
PASS	MAIN	SR	MAIN	SR
Worst Pair	36-45	12-36	36-45	45-78
NEXT (dB)	2.1	13.3	2.8	13.9
Freq. (MHz)	87.8	28.6	100.0	93.3
Limit (dB)	31.1	39.4	30.1	30.6
Worst Pair	36	12	45	45
PS NEXT (dB)	4.9	15.5	5.4	16.4
Freq. (MHz)	87.8	28.6	100.0	93.3
Limit (dB)	28.1	36.4	27.1	27.6



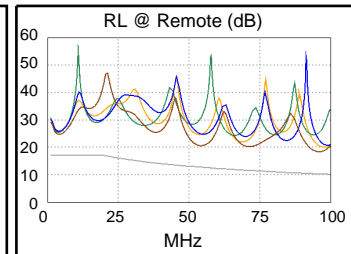
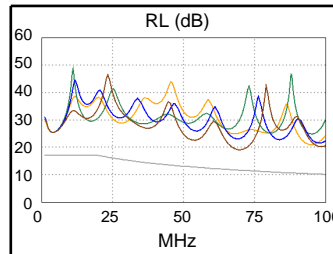
PASS	MAIN	SR	MAIN	SR
Worst Pair	78-45	45-78	78-45	45-78
ACR-F (dB)	24.2	24.2	24.2	24.2
Freq. (MHz)	83.8	100.0	100.0	100.0
Limit (dB)	18.9	17.4	17.4	17.4
Worst Pair	78	78	45	78
PS ACR-F (dB)	25.9	25.3	27.0	25.3
Freq. (MHz)	68.5	100.0	100.0	100.0
Limit (dB)	17.7	14.4	14.4	14.4



N/A	MAIN	SR	MAIN	SR
Worst Pair	36-45	12-36	36-45	45-78
ACR-N (dB)	11.3	22.5	24.8	35.2
Freq. (MHz)	1.6	5.4	100.0	93.8
Limit (dB)	56.9	46.3	6.1	7.4
Worst Pair	36	12	45	45
PS ACR-N (dB)	14.3	24.8	27.4	37.8
Freq. (MHz)	1.6	6.0	100.0	94.0
Limit (dB)	53.9	42.2	3.1	4.3



N/A	MAIN	SR	MAIN	SR
Worst Pair	78	78	78	78
RL (dB)	7.4	7.7	7.4	8.1
Freq. (MHz)	69.3	3.5	69.3	95.3
Limit (dB)	11.6	17.0	11.6	10.2



Compliant Network Standards:

10BASE-T	100BASE-TX	100BASE-T4
1000BASE-T	ATM-25	ATM-51
ATM-155	100VG-AnyLan	TR-4
TR-16 Active	TR-16 Passive	