



## Cable ID: 11-PATCH-FUTP-CAT6-PVC-CM-59.3m

Test Limit: TIA Cat 6 Channel (+All)

Limits Version: V7.5

Date / Time: 02/25/2021 02:05:06 PM

Headroom 6.2 dB (NEXT 4,5-7,8)

Cable Type: Cat 6 F/UTP

NVP: 67.0%

Main: Versiv

S/N: 2044074

Software Version: V6.5 Build 5

Calibration Date: 02/24/2021

Adapter: DSX-8000 (DSX-CHA804)

S/N: 21041386

## Test Summary: PASS

Remote: Versiv

S/N: 2039444

Software Version: V6.5 Build 5

Calibration Date: 02/24/2021

Adapter: DSX-8000R (DSX-CHA804)

S/N: 21041393

Length (ft), Limit 328	[Pair 3,6]	195
Prop. Delay (ns), Limit 555	[Pair 1,2]	311
Delay Skew (ns), Limit 50	[Pair 1,2]	16
Resistance (ohms), Limit 25.00	[Pair 1,2]	16.30
Resist. Unbal. (ohms), Limit 0.490	[Pair 7,8]	0.179
Resist. P2P Unbal. (ohms), Limit 0.560	[Pair 1,2-3,6]	0.143
Insertion Loss Margin (dB)	[Pair 7,8]	8.6
Frequency (MHz)	[Pair 7,8]	250.0
Limit (dB)	[Pair 7,8]	35.9

Worst Case Margin Worst Case Value

PASS	MAIN	SR	MAIN	SR
Worst Pair	4,5-7,8	4,5-7,8	4,5-7,8	4,5-7,8
<b>NEXT (dB)</b>	6.7	6.2	6.8	6.2
Freq. (MHz)	211.5	238.0	212.0	238.0
Limit (dB)	34.4	33.5	34.3	33.5
Worst Pair	4,5	3,6	4,5	4,5
<b>PS NEXT (dB)</b>	8.1	8.5	8.7	8.7
Freq. (MHz)	4.9	3.4	212.0	238.0
Limit (dB)	59.1	61.7	31.4	30.5

PASS	MAIN	SR	MAIN	SR
Worst Pair	4,5-7,8	4,5-7,8	4,5-7,8	4,5-7,8
<b>ACR-F (dB)</b>	25.4	23.9	25.5	23.9
Freq. (MHz)	20.6	207.5	204.0	207.5
Limit (dB)	37.0	16.9	17.1	16.9
Worst Pair	3,6	3,6	7,8	7,8
<b>PS ACR-F (dB)</b>	15.3	14.9	27.0	26.4
Freq. (MHz)	1.0	1.0	204.0	219.5
Limit (dB)	60.3	60.3	14.1	13.4

N/A	MAIN	SR	MAIN	SR
Worst Pair	4,5-7,8	3,6-4,5	4,5-7,8	4,5-7,8
<b>ACR-N (dB)</b>	8.3	7.7	18.5	14.5
Freq. (MHz)	4.8	3.4	248.5	238.0
Limit (dB)	57.5	60.5	-2.7	-1.4
Worst Pair	4,5	3,6	7,8	7,8
<b>PS ACR-N (dB)</b>	9.2	9.4	20.1	17.0
Freq. (MHz)	4.9	3.4	249.0	238.0
Limit (dB)	54.7	58.0	-5.7	-4.4

PASS	MAIN	SR	MAIN	SR
Worst Pair	7,8	7,8	7,8	1,2
<b>RL (dB)</b>	7.2	7.7	13.0	14.0
Freq. (MHz)	12.1	4.3	166.5	116.0
Limit (dB)	18.6	19.0	9.8	11.4

Compliant Network Standards:

10BASE-T	100BASE-TX	100BASE-T4
1000BASE-T	2.5GBASE-T	5GBASE-T
ATM-25	ATM-51	ATM-155
100VG-AnyLan	TR-4	TR-16 Active
TR-16 Passive		

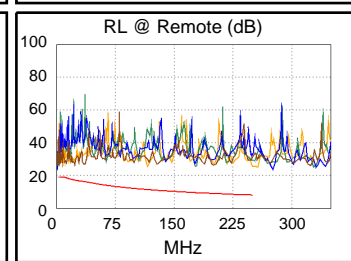
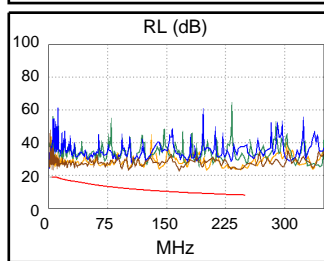
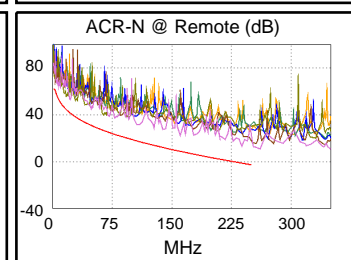
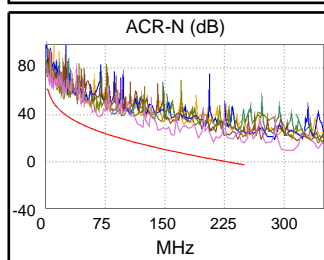
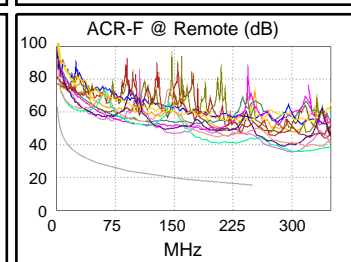
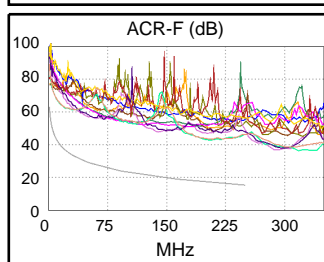
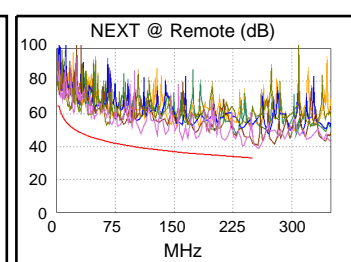
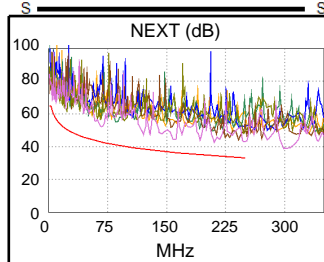


195 ft



Wire Map (T568B)

PASS





## Cable ID: 11-PATCH-FUTP-CAT6-PVC-CM-59.3m

Test Limit: TIA Cat 6 Channel (+All)

Limits Version: V7.5

Date / Time: 02/25/2021 02:05:06 PM

Headroom 6.2 dB (NEXT 4,5-7,8)

Cable Type: Cat 6 F/UTP

NVP: 67.0%

Main: Versiv

S/N: 2044074

Software Version: V6.5 Build 5

Calibration Date: 02/24/2021

Adapter: DSX-8000 (DSX-CHA804)

S/N: 21041386

## Test Summary: PASS

Remote: Versiv

S/N: 2039444

Software Version: V6.5 Build 5

Calibration Date: 02/24/2021

Adapter: DSX-8000R (DSX-CHA804)

S/N: 21041393

Worst Case Margin		Worst Case Value	
<b>PASS</b>	MAIN	SR	MAIN SR
Worst Pair	7,8	1,2	3,6 1,2
<b>TCL (dB)</b>	12.6	14.5	20.3 22.3
Freq. (MHz)	1.0	1.0	229.5 234.5
Limit (dB)	40.0	40.0	14.6 14.4
<b>N/A</b>	MAIN	SR	MAIN SR
Worst Pair			1,2-4,5 7,8-3,6
<b>CDNEXT (dB)</b>			39.6 40.5
Freq. (MHz)			337.0 327.0
Limit (dB)			
<b>N/A</b>	MAIN	SR	MAIN SR
Worst Pair			7,8 3,6
<b>CMRL (dB)</b>			20.5 20.4
Freq. (MHz)			26.1 350.0
Limit (dB)			
<b>PASS</b>	MAIN	SR	MAIN SR
Worst Pair	1,2	1,2	3,6 3,6
<b>ELTCTL (dB)</b>	18.4	21.5	30.7 31.5
Freq. (MHz)	1.0	1.0	24.3 22.9
Limit (dB)	30.0	30.0	2.3 2.8

