



**Cable ID: CAT5E-UTP-BE**

Date / Time: 01/17/2019 02:51:43 PM

Headroom 7.1 dB (NEXT 36-45)

Test Limit: TIA Cat 5e Perm. Link

Cable Type: Cat 5e U/UTP

NVP: 69.0%

Operator: FRANK

Software Version: V6.0 Build 6

Limits Version: V7.0

Calibration Date:

Main (Module): 02/06/2018

Remote (Module): 02/06/2018

**Test Summary: PASS**

Model: DSX-8000

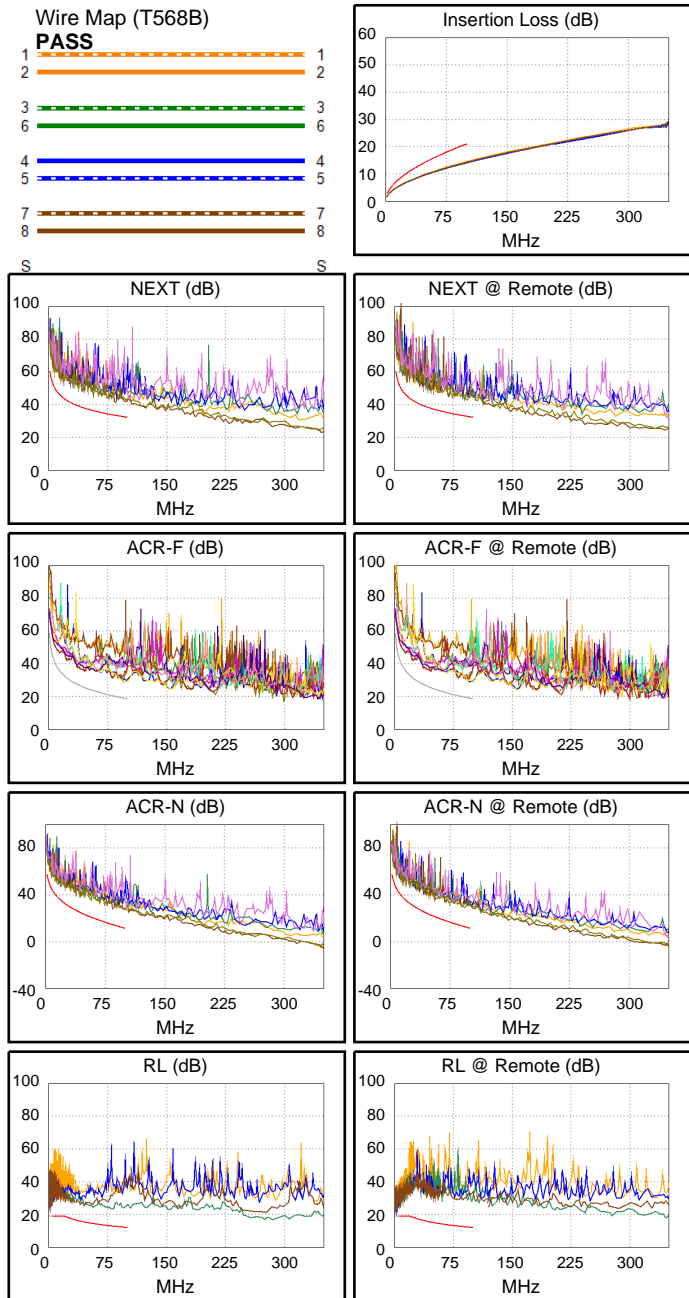
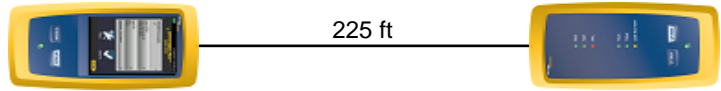
Main S/N: 1803463

Remote S/N: 1803429

Main Adapter: DSX-PLA804

Remote Adapter: DSX-PLA804

|                             |           |       |
|-----------------------------|-----------|-------|
| Length (ft), Limit 295      | [Pair 36] | 225   |
| Prop. Delay (ns), Limit 498 | [Pair 12] | 339   |
| Delay Skew (ns), Limit 44   | [Pair 12] | 7     |
| Resistance (ohms)           | [Pair 12] | 12.41 |
|                             |           |       |
| Insertion Loss Margin (dB)  | [Pair 12] | 6.5   |
| Frequency (MHz)             | [Pair 12] | 100.0 |
| Limit (dB)                  | [Pair 12] | 21.0  |



**Worst Case Margin Worst Case Value**

| PASS                | MAIN  | SR    | MAIN  | SR    |
|---------------------|-------|-------|-------|-------|
| Worst Pair          | 36-45 | 36-78 | 36-45 | 36-78 |
| <b>NEXT (dB)</b>    | 7.1   | 9.1   | 7.1   | 9.2   |
| Freq. (MHz)         | 84.8  | 7.4   | 84.8  | 92.3  |
| Limit (dB)          | 33.5  | 50.6  | 33.5  | 32.9  |
| Worst Pair          | 45    | 36    | 36    | 36    |
| <b>PS NEXT (dB)</b> | 8.4   | 9.1   | 9.3   | 9.1   |
| Freq. (MHz)         | 84.5  | 89.0  | 99.8  | 89.0  |
| Limit (dB)          | 30.5  | 30.1  | 29.3  | 30.1  |

| PASS                 | MAIN  | SR    | MAIN  | SR    |
|----------------------|-------|-------|-------|-------|
| Worst Pair           | 78-12 | 78-12 | 78-12 | 12-78 |
| <b>ACR-F (dB)</b>    | 9.5   | 9.7   | 9.5   | 9.8   |
| Freq. (MHz)          | 96.0  | 93.8  | 96.0  | 96.0  |
| Limit (dB)           | 19.0  | 19.2  | 19.0  | 19.0  |
| Worst Pair           | 45    | 36    | 12    | 12    |
| <b>PS ACR-F (dB)</b> | 10.5  | 10.9  | 12.2  | 12.2  |
| Freq. (MHz)          | 36.5  | 36.5  | 96.0  | 93.8  |
| Limit (dB)           | 24.4  | 24.4  | 16.0  | 16.2  |

| N/A                  | MAIN  | SR    | MAIN  | SR    |
|----------------------|-------|-------|-------|-------|
| Worst Pair           | 36-78 | 36-78 | 36-45 | 36-78 |
| <b>ACR-N (dB)</b>    | 10.7  | 10.8  | 16.0  | 15.7  |
| Freq. (MHz)          | 7.3   | 7.4   | 98.3  | 92.3  |
| Limit (dB)           | 45.5  | 45.3  | 11.7  | 12.8  |
| Worst Pair           | 36    | 36    | 36    | 36    |
| <b>PS ACR-N (dB)</b> | 12.6  | 13.0  | 16.2  | 15.6  |
| Freq. (MHz)          | 7.4   | 7.4   | 99.8  | 89.0  |
| Limit (dB)           | 42.3  | 42.3  | 8.4   | 10.5  |

| PASS           | MAIN | SR   | MAIN | SR   |
|----------------|------|------|------|------|
| Worst Pair     | 36   | 78   | 36   | 78   |
| <b>RL (dB)</b> | 9.6  | 7.5  | 10.1 | 7.5  |
| Freq. (MHz)    | 56.0 | 5.0  | 82.0 | 5.0  |
| Limit (dB)     | 14.5 | 19.0 | 12.9 | 19.0 |

Compliant Network Standards:  
 10BASE-T      100BASE-TX      100BASE-T4  
 1000BASE-T    2.5GBASE-T      ATM-25  
 ATM-51        ATM-155          100VG-AnyLan  
 TR-4           TR-16 Active      TR-16 Passive