



Cable ID: CAT5E-UTP-200FT

Date / Time: 10/13/2018 11:16:30 AM

Headroom 13.4 dB (NEXT 12-78)

Test Limit: TIA Cat 5e Channel

Cable Type: Cat 5e U/UTP

NVP: 69.0%

Operator: KARIM

Software Version: 2.7800

Limits Version: 1.9500

Calibration Date:

Main (Tester): 11/01/2016

Remote (Tester): 11/01/2016

Test Summary: PASS

Model: DTX-1800

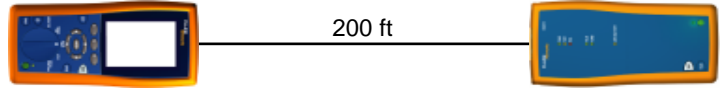
Main S/N: 3178039

Remote S/N: 3178046

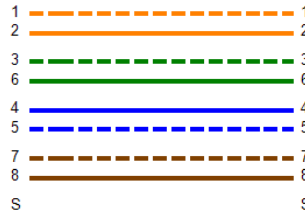
Main Adapter: DTX-CHA002

Remote Adapter: DTX-CHA002

Length (ft), Limit 328	[Pair 78]	200
Prop. Delay (ns), Limit 555	[Pair 36]	312
Delay Skew (ns), Limit 50	[Pair 36]	8
Resistance (ohms)	[Pair 45]	10.6
Insertion Loss Margin (dB)	[Pair 36]	7.8
Frequency (MHz)	[Pair 36]	100.0
Limit (dB)	[Pair 36]	24.0

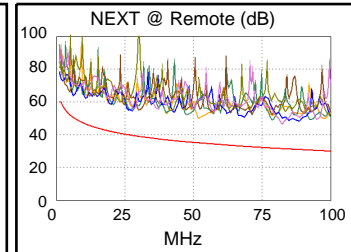
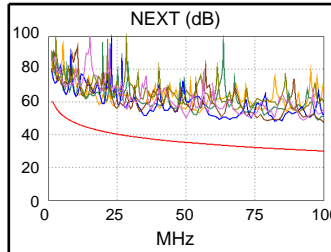


Wire Map (T568B)
PASS

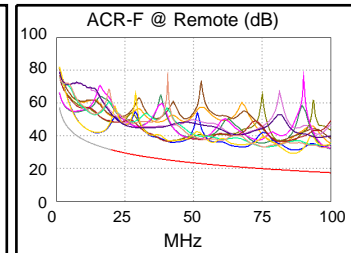
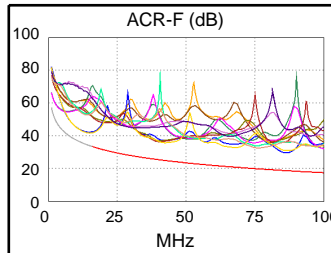


Worst Case Margin Worst Case Value

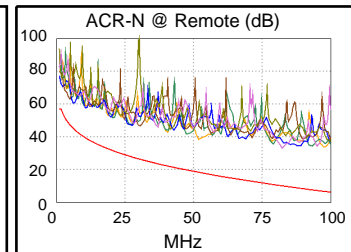
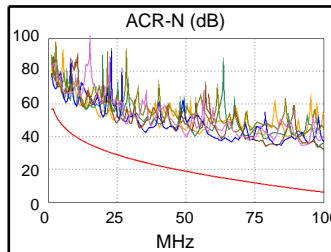
PASS	MAIN	SR	MAIN	SR
Worst Pair	12-78	12-78	36-45	45-78
NEXT (dB)	13.5	13.4	17.6	15.1
Freq. (MHz)	35.0	6.0	100.0	82.3
Limit (dB)	37.9	50.7	30.1	31.5
Worst Pair	12	12	45	78
PS NEXT (dB)	14.8	14.3	18.2	16.2
Freq. (MHz)	34.5	27.0	98.0	82.5
Limit (dB)	35.0	36.8	27.2	28.5



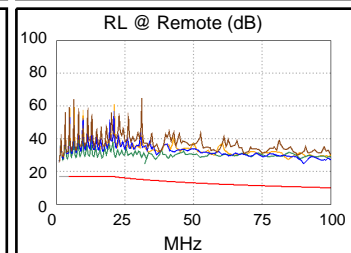
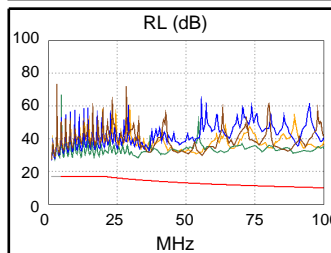
PASS	MAIN	SR	MAIN	SR
Worst Pair	78-12	12-78	12-78	78-12
ACR-F (dB)	7.0	7.2	10.8	10.4
Freq. (MHz)	12.6	12.5	86.5	85.5
Limit (dB)	35.4	35.5	18.7	18.8
Worst Pair	12	78	78	12
PS ACR-F (dB)	9.8	9.7	12.8	13.2
Freq. (MHz)	12.3	12.6	86.5	86.5
Limit (dB)	32.6	32.4	15.7	15.7



N/A	MAIN	SR	MAIN	SR
Worst Pair	12-78	12-78	36-45	45-78
ACR-N (dB)	15.0	15.4	26.0	23.0
Freq. (MHz)	2.0	6.0	100.0	82.3
Limit (dB)	55.3	45.2	6.1	10.0
Worst Pair	12	12	45	78
PS ACR-N (dB)	16.2	16.4	26.5	24.2
Freq. (MHz)	2.0	5.8	98.0	82.5
Limit (dB)	52.3	42.6	3.5	6.9



PASS	MAIN	SR	MAIN	SR
Worst Pair	36	36	36	45
RL (dB)	11.2	10.8	11.2	14.4
Freq. (MHz)	3.9	3.9	3.9	90.0
Limit (dB)	17.0	17.0	17.0	10.5



Compliant Network Standards:
 10BASE-T 100BASE-TX 100BASE-T4
 1000BASE-T ATM-25 ATM-51
 ATM-155 100VG-AnyLan TR-4
 TR-16 Active TR-16 Passive