



**Cable ID: CAT8-SFTP-16FT**

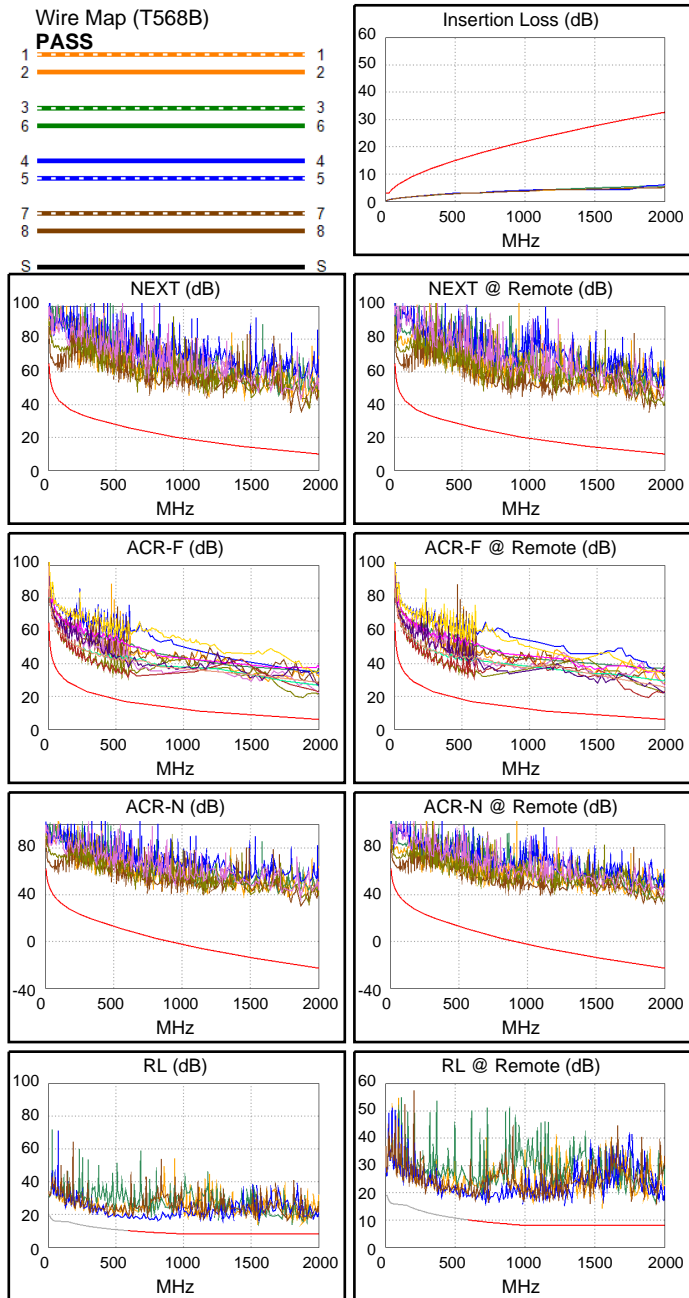
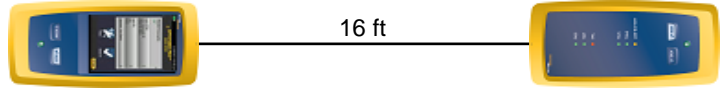
Date / Time: 01/07/2019 10:02:30 AM  
**Headroom 14.5 dB (NEXT 36-45)**  
**Test Limit: TIA Cat 8 Channel**  
 Cable Type: Cat 8 S/FTP  
 NVP: 78.0%

Operator: FRANK  
 Software Version: V6.0 Build 6  
 Limits Version: V7.0  
 Calibration Date:  
 Main (Module): 02/06/2018  
 Remote (Module): 02/06/2018

**Test Summary: PASS**

Model: DSX-8000  
 Main S/N: 1803463  
 Remote S/N: 1803429  
 Main Adapter: DSX-CHA804  
 Remote Adapter: DSX-CHA804

Length (ft), Limit 98	[Pair 12]	16
Prop. Delay (ns), Limit 179	[Pair 12]	22
Delay Skew (ns), Limit 17	[Pair 12]	0
Resistance (ohms), Limit 6.40	[Pair 78]	1.43
Insertion Loss Margin (dB)	[Pair 45]	26.0
Frequency (MHz)	[Pair 45]	1954.0
Limit (dB)	[Pair 45]	32.2



**Worst Case Margin Worst Case Value**

PASS	MAIN	SR	MAIN	SR
Worst Pair	36-45	36-45	36-45	36-45
<b>NEXT (dB)</b>	14.7	14.5	25.0	27.6
Freq. (MHz)	15.5	4.3	1870.	1888.
Limit (dB)	54.2	63.4	10.8	10.7
Worst Pair	36	36	36	36
<b>PS NEXT (dB)</b>	17.9	17.3	26.8	28.3
Freq. (MHz)	15.5	4.3	1930.	1930.
Limit (dB)	50.8	60.1	7.8	7.8

PASS	MAIN	SR	MAIN	SR
Worst Pair	36-45	45-36	36-45	45-36
<b>ACR-F (dB)</b>	12.4	12.6	12.4	12.6
Freq. (MHz)	1880.	1876.	1880.	1876.
Limit (dB)	6.5	6.5	6.5	6.5
Worst Pair	45	36	45	36
<b>PS ACR-F (dB)</b>	14.8	14.7	14.8	14.7
Freq. (MHz)	1880.	1876.	1880.	1876.
Limit (dB)	3.5	3.5	3.5	3.5

N/A	MAIN	SR	MAIN	SR
Worst Pair	36-45	36-45	36-45	36-45
<b>ACR-N (dB)</b>	17.3	17.3	51.2	53.4
Freq. (MHz)	15.5	4.3	1890.	1888.
Limit (dB)	51.2	60.4	-21.0	-21.0
Worst Pair	36	36	36	36
<b>PS ACR-N (dB)</b>	20.5	20.1	53.5	55.0
Freq. (MHz)	15.5	15.5	1930.	1930.
Limit (dB)	47.8	47.8	-24.2	-24.2

PASS	MAIN	SR	MAIN	SR
Worst Pair	45	45	12	45
<b>RL (dB)</b>	6.4	6.4	6.7	6.4
Freq. (MHz)	785.0	744.0	1876.	744.0
Limit (dB)	8.9	9.2	8.0	9.2

Compliant Network Standards:  
 10BASE-T      100BASE-TX      100BASE-T4  
 1000BASE-T    2.5GBASE-T      5GBASE-T  
 10GBASE-T    25GBASE-T      40GBASE-T  
 ATM-25      ATM-51      ATM-155  
 100VG-AnyLan    TR-4      TR-16 Active  
 TR-16 Passive