



Cable: CAT8-SFTP-10FT

Date / Time: 12/13/2018 04:22:32 PM

Headroom 14.5 dB (NEXT 36-45)

Test Limit: TIA Cat 8 Channel

Cable Type: Cat 8 S/FTP

NVP: 78.0%

Operator: FRANK

Software Version: V6.0 Build 6

Limits Version: V7.0

Calibration Date:

Main (Module): 02/06/2018

Remote (Module): 02/06/2018

Test Summary: PASS

Model: DSX-8000

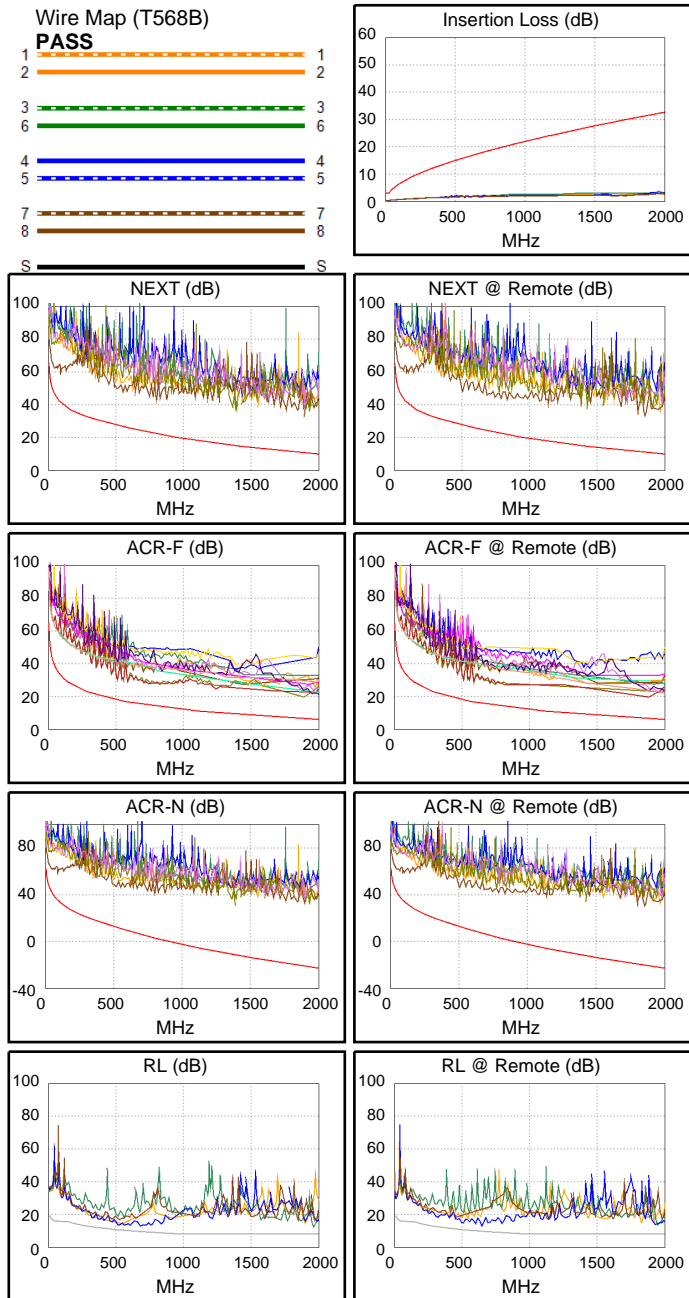
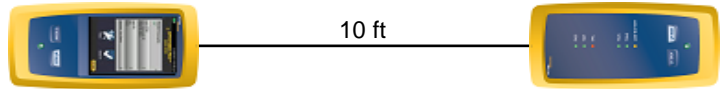
Main S/N: 1803463

Remote S/N: 1803429

Main Adapter: DSX-CHA804

Remote Adapter: DSX-CHA804

Length (ft), Limit 98	[Pair 12]	10
Prop. Delay (ns), Limit 179	[Pair 12]	13
Delay Skew (ns), Limit 17	[Pair 12]	0
Resistance (ohms), Limit 6.40	[Pair 45]	0.98
Insertion Loss Margin (dB)	[Pair 36]	28.5
Frequency (MHz)	[Pair 36]	1962.0
Limit (dB)	[Pair 36]	32.3



Worst Case Margin Worst Case Value

PASS	MAIN	SR	MAIN	SR
Worst Pair	36-45	36-45	36-45	36-45
NEXT (dB)	15.5	14.5	25.4	22.3
Freq. (MHz)	42.3	3.8	1896.	1852.
Limit (dB)	46.9	64.3	10.6	10.9
Worst Pair	36	36	36	36
PS NEXT (dB)	18.4	17.3	26.2	24.6
Freq. (MHz)	21.8	3.1	1930.	1970.
Limit (dB)	48.4	62.0	7.8	7.5

PASS	MAIN	SR	MAIN	SR
Worst Pair	36-45	36-45	36-45	45-36
ACR-F (dB)	11.8	11.8	13.2	13.1
Freq. (MHz)	589.0	550.0	1890.	1890.
Limit (dB)	16.6	17.2	6.4	6.4
Worst Pair	36	36	36	36
PS ACR-F (dB)	14.1	13.5	14.1	13.5
Freq. (MHz)	1970.	1884.	1970.	1884.
Limit (dB)	3.1	3.5	3.1	3.5

N/A	MAIN	SR	MAIN	SR
Worst Pair	36-45	36-45	36-45	36-45
ACR-N (dB)	18.2	17.4	54.1	50.8
Freq. (MHz)	21.8	3.8	1898.	1852.
Limit (dB)	48.7	61.3	-21.1	-20.3
Worst Pair	36	36	36	36
PS ACR-N (dB)	21.1	20.2	55.3	53.4
Freq. (MHz)	21.8	3.5	1930.	1970.
Limit (dB)	45.4	58.5	-24.2	-24.9

PASS	MAIN	SR	MAIN	SR
Worst Pair	36	36	36	36
RL (dB)	4.1	5.5	4.1	5.5
Freq. (MHz)	1968.	1956.	1968.	1956.
Limit (dB)	8.0	8.0	8.0	8.0

Compliant Network Standards:

10BASE-T	100BASE-TX	100BASE-T4
1000BASE-T	2.5GBASE-T	5GBASE-T
10GBASE-T	25GBASE-T	40GBASE-T
ATM-25	ATM-51	ATM-155
100VG-AnyLan	TR-4	TR-16 Active
TR-16 Passive		