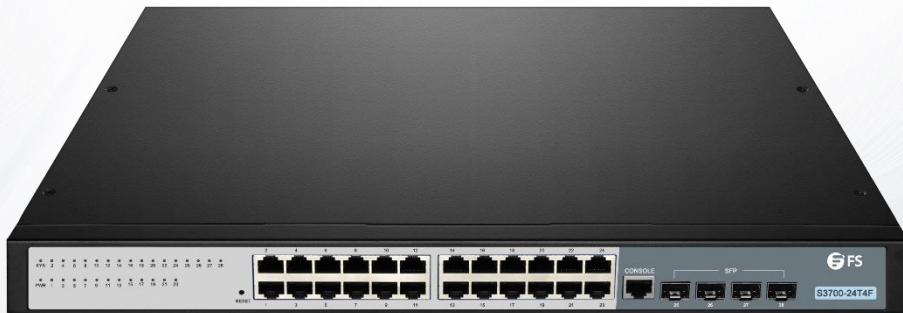


S3700-24T4F Switch

INTELLIGENT ACCESS SWITCH FOR CARRIER'S IP MAN AND ENTERPRISE NETWORK



Overview

S3700-24T4F is a Gigabit access switch designed for carrier's IP MAN (Metropolitan Area Network) and enterprise networks. It features 24 10/100/1000BASE-T RJ45 ports and 4 1G SFP optical ports. It can be managed with the Command Line Interface (CLI) and web-based Graphical User Interface. Advanced Layer 2 function, static routing, and a suite of security and management features make the S3700-24T4F switch ideal for all organizations considering reliable, affordable and simple access layer switching.

Benefits

- Layer 2+ Static Routing
- Fanless Design, Silent Operation
- STP/RSTP/MSTP, LACP
- Rich QoS Policies
- IEEE 802.1x, Radius and Tacacs+
- Industry-standard CLI & Web Management

Key Features

Carrier-class Ethernet Access Switch

Support the telecom-level Ethernet-ring protection protocol with a protection shift time of less than 50ms, STP/RSTP/MSTP, backup of active and standby uplinks, and LACP link aggregation to cater to the requirements of high reliability of carriers.

Have powerful ACL functions to access and control L2-L7 data, providing carriers flexible and various policy control methods;

Support ISSU (In-Service Software Upgrade), which guarantees the user data non-stop forwarding when the system is upgrading.

Support various L2 multicast function, including user fast-leave mechanism and cross VLAN multicast replication function.

Rich QoS Policies

Support complex traffic classification based on VLAN, MAC, source address, destination addresses, IP protocols and priorities. Support priority remark.

Provide with flexible bandwidth control policies, supporting port-/flow-based flow limit and ensuring the line speed forwarding of each port to make sure the high quality of video, audio and data services.

Support multiple queue grooming algorithms such as SP, WRR or SP+WRR.

Comprehensive IPv6 Solutions

Support the IPv6 protocol suite, IPv6 neighbor discovery and ICMPv6.

Support IPv6 based Ping, Traceroute, Telnet and SSH, meeting the need of IPv6 network equipment management and service control.

Advanced Security Mechanisms

Adopt advanced hardware architecture design, realizing the hierarchical scheduling and protection of the packet.

Provide multiple security measures to defend against attacks from SYN Flood, UDP Flood, broadcast storm and mass flow of DOS or TCP.

Support the suppression of broadcast, multicast and unknown unicast packet, ensuring the equipment can operate normally in harsh network conditions.

Support the port isolation in a same VLAN, DHCP-Snooping and IP+MAC+ port binding.

Support command line authority control based on user levels.

Comply with IEEE 802.1x, Radius and Tacacs+.

Have the perfect loop detection mechanism.

Convenient Management and Maintenance

Support multiple management styles such as Console, Telnet and SSH.

Support WEB based management. The management is more simple and effective.

Support upload and download of TFTP files.

Support ISSU (In-Service Software Upgrade).

Support SNMP.

Technical Specification

S3700-24T4F switch comes with advanced hardware architecture design and abundant L2 and L2+ features. Here's a look at the details.

CHARACTERISTICS

	S3700-24T4F
Ports	
Ports	24x 10/100/1000BASE-T RJ45, 4x 1G SFP
Max. 1G Ports	28
Console port	1
Operating System	
OS	FSOS
Key Components	
Switch Chip	RTL8382M
Performance	
Layer Type	Layer 2+
Switching Capacity	56 Gbps
Forwarding Rate	42 Mpps
DDRIII Capacity	512MB
Flash Memory	16MB
RAM	128MB
Packet Buffer	4MB
Jumbo Frame	9KB
MAC Address	8K
Number of VLANs	4K

CHARACTERISTICS

	S3700-24T4F
Performance	
MTBF (Hours)	>50,000
Authentication Methods	802.1X, AAA
Remote Management Protocol	SNMP, RMON, HTTP, Telnet, SSH
Status Indicators	System, LINK activity, PWR
Power	
Input Voltage	100-240VAC, 50-60Hz
Max. Power Consumption	20W
Physical and Environmental	
Dimensions (HxWxD)	1.73"x17.32"x8.27" (44x440x210mm)
Rack Space	1U
Power Device	Power Supply - Internal
Acoustic Noise	0dB
Operating Temperature	32°F to 122°F (0° to 50°C)
Storage Temperature	-4°F to 158°F (-20° to 70°C)
Operating Humidity	10% to 90% (Non-condensing)
Storage Humidity	5% to 95% (Non-condensing)
Weight	4.41 lbs (2kg)
Warranty	
Warranty	4 Years

KEY FEATURES

Functionality	Description
MAC	<ul style="list-style-type: none"> • Static configuration and dynamically learning of MAC address • Check and delete MAC address • Configuring of MAC address aging time • Limit on MAC address learning number • MAC address filtering function
VLAN	<ul style="list-style-type: none"> • 4K VLAN entries • GVRP • 1:1 and N:1 VLAN Mapping • QinQ • Private VLAN • Voice VLAN
Spanning Tree	<ul style="list-style-type: none"> • 802.1D (STP), 802.1W (RSTP) and 802.1S (MSTP) • BPDU protection, root protection and ring protection
Multicast	<ul style="list-style-type: none"> • IGMP v1/v2/v3 • IGMP Snooping • IGMP Fast Leave • Multicast group policy and multicast number limit • MVR
IPv4	<ul style="list-style-type: none"> • Static routing
IPv6	<ul style="list-style-type: none"> • ICMPv6, DHCPv6 and IPv6 Telnet • IPv6 Neighbor Discovery • MLD v1/v2 • MLD Snooping
QoS	<ul style="list-style-type: none"> • Traffic classification of each field of L2/L3/L4 protocol headers • CAR traffic control • 802.1P/DSCP priority remark • Multiple queuing algorithms such as SP, WRR or SP+WRR • Tail-Drop, WRED • Traffic supervision and traffic shaping

KEY FEATURES

Functionality	Description
Security Features	<ul style="list-style-type: none"> • Identification and filtering of L2/L3/L4 based ACL • Defend against DDoS attack, SYN Flood attack of TCP or UDP Flood attack • Suppression of broadcast, multicast and unknown unicast packet • Port isolation • Port security, IP+MAC+port binding • DHCP Snooping, DHCP Option 82 • IEEE 802.1x authentication
Security Features	<ul style="list-style-type: none"> • Radius and Tacacs+ authentication • Command line authority control based on user levels
Reliability	<ul style="list-style-type: none"> • Static/LACP link aggregation • EAPS and ERPS • ISSU • Dying gasp
Management and Maintenance	<ul style="list-style-type: none"> • Console, Telnet, SSH 2.0, HTTP/HTTPS • SNMP v1/v2/v3, RMON • TFTP/FTP • ZTP • SPAN/RSPAN • NTP

Accessories



Console Cable *1



Power Cord *1



Rack Mount Brackets *2



Screws *8



Rubber Pads *4



 <https://www.fs.com>



The information in this document is subject to change without notice. FS has made all efforts to ensure the accuracy of the information, but all information in this document does not constitute any kind of warranty.