

S1900 Series Unmanaged Switches

Ethernet Unmanaged Switches Ideal for Home Office and SMB

Models: S1900-5T; S1900-8T



Overview

S1900 Series Gigabit Ethernet Unmanaged Switches provide a seamless network connection, all ports support Auto MDI/MDIX function. With the 10/100/1000Mbps Auto-Negotiation RJ45 ports, the switches can upgrade your old network to a low-cost, easy-to-use, high performance 1000Mbps network.

With easy to install and use features, the switches are suitable for expanding your home or office network. The LED on the front panel can dynamically display the operation status of the network.

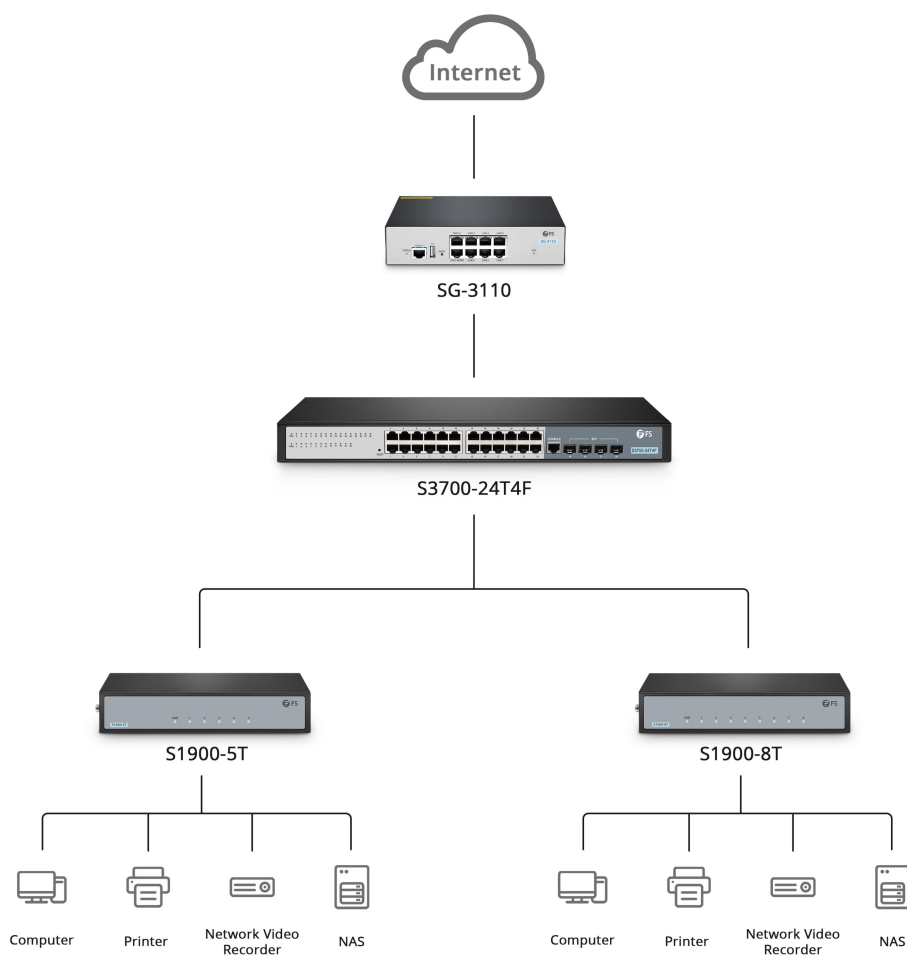
Benefits

- Plug and Play, No Configuration Needed
- Fanless Design, Always Working Silently
- Store and Forward Mode
- MAC Address Auto-learning and Auto-aging
- Support Auto MDI/MDIX

Key Features

- 10/100/1000Mbps Auto-Negotiation RJ45 ports supporting Auto-MDI/MDIX
- Comply with IEEE 802.3i, IEEE 802.3u, IEEE802.3x, IEEE802.3ab, IEEE802.3az standards
- Store and forward mode operates
- Support MAC address auto-learning and auto-aging
- Support IEEE802.3x flow control for Full-duplex Mode and backpressure for Half-duplex Mode
- Support packet length 9216 bytes jumbo frame packet forwarding at wire speed
- LED indicators for monitoring power, link/activity
- External power adapter supply

Application



Technical Specification

S1900 series Gigabit Ethernet unmanaged switches come with an outstanding performance and quality. Here's a look at the details.

Characteristics

	S1900-5T	S1900-8T
--	----------	----------

Ports

Ports	5 x 10/100/1000Base-T Auto-Negotiation ports	8 x 10/100/1000Base-T Auto-Negotiation ports
-------	--	--

Performance

Switching Capacity	10Gbps	16Gbps
--------------------	--------	--------

Forwarding Rate	7.44Mpps	11.9Mpps
-----------------	----------	----------

Packet Buffer	0.125MB	0.19MB
---------------	---------	--------

Jumbo Frame	9KB	
-------------	-----	--

MAC Address	2K	4K
-------------	----	----

Transfer Method	Store-and-Forward	
-----------------	-------------------	--

Standards and Protocols	IEEE 802.3i, IEEE 802.3u, IEEE802.3ab, IEEE802.3x, IEEE802.3az	
-------------------------	--	--

Network Media	10BASE-T: UTP Cat3 or better (maximum 100m) 100BASE-T: UTP Cat5 or better (maximum 100m) 1000BASE-T: UTP Cat5e or better (maximum 100m)	
---------------	---	--

Power

Power Supply	5VDC 1A External Power Supply	
--------------	-------------------------------	--

Power Consumption	Maximum: 1.9W (DC 5V)	Maximum: 3.1W (DC 5V)
-------------------	-----------------------	-----------------------

Physical Specifications

Fan	Fanless	
-----	---------	--

Product Material	Steel Shell	
------------------	-------------	--

Mounting Methods	Desktop Mounting Wall Mounting	
------------------	-----------------------------------	--

Dimensions (H×W×D)	1.10"x5.52"x 2.99" (28x140x 76mm)	
--------------------	------------------------------------	--

Environmental Specifications

Operating Temperature	32°F to 104°F (0°C to 40°C)	
-----------------------	-----------------------------	--

Storage Temperature	-40°F to 158°F (-40°C to 70°C)	
---------------------	--------------------------------	--

Characteristics

	S1900-5T	S1900-8T
--	----------	----------

Environmental Specifications

Operating Humidity	10% to 90% (Non-condensing)
--------------------	-----------------------------

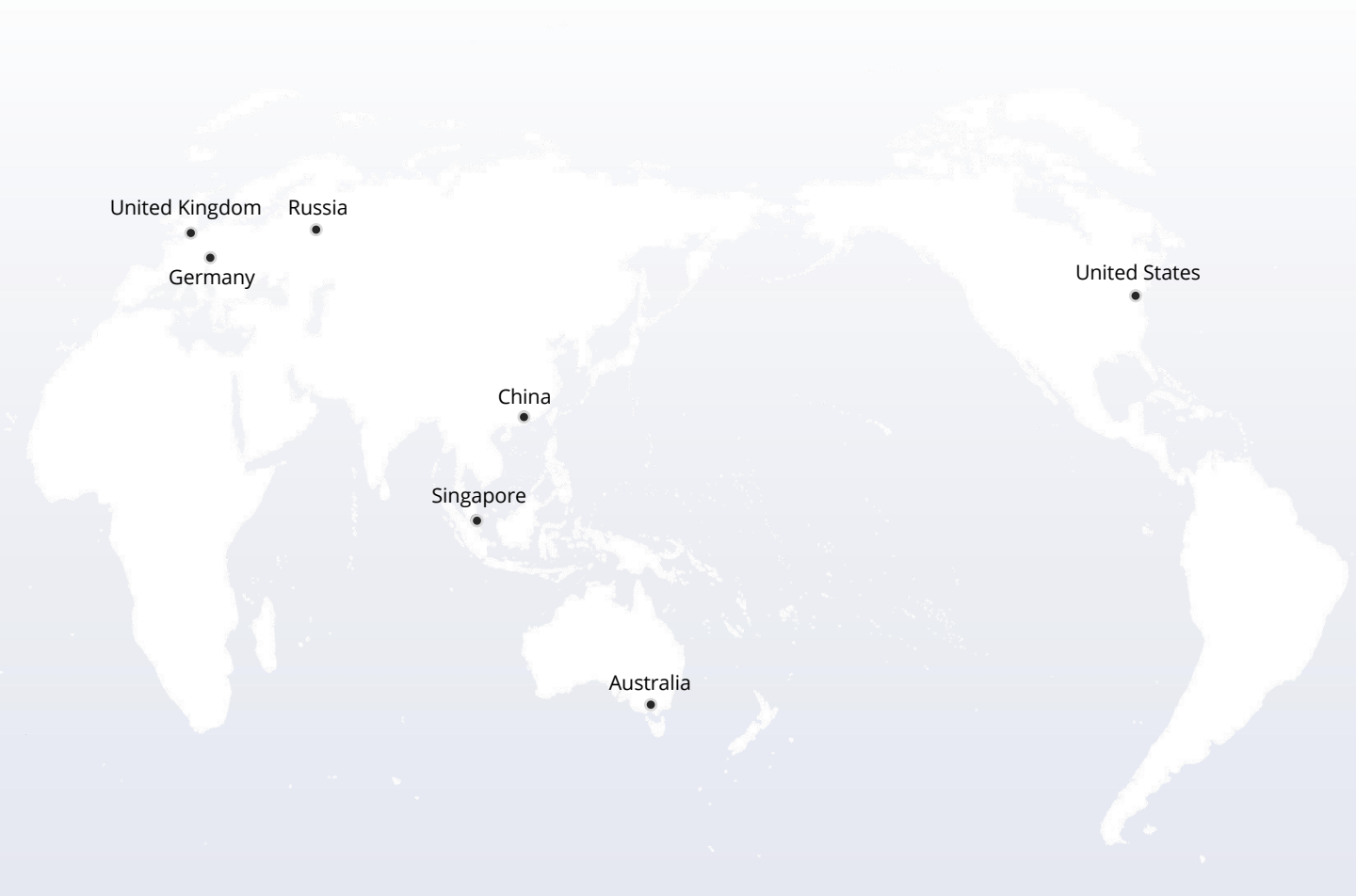
Storage humidity	5% to 90% (Non-condensing)
------------------	----------------------------

Warranty	
----------	--

Warranty	2 Years
----------	---------

Ordering Information

FS P/N	ID NO.	Description
S1900-5T	#132526	S1900-5T, 5-Port Gigabit Ethernet SOHO Unmanaged Switch, Metal, Fanless, Desktop/Wall-Mount
S1900-5TP	#132528	S1900-5TP, 5-Port Gigabit Ethernet SOHO Unmanaged PoE Switch,5 x PoE+ Ports @60W, Metal, Fanless, Desktop/Wall-Mount
S1900-8T	#132527	S1900-8T, 8-Port Gigabit Ethernet SOHO Unmanaged Switch, Metal, Fanless, Desktop/Wall-Mount
S1900-8TP	#132529	S1900-8TP, 8-Port Gigabit Ethernet SOHO Unmanaged PoE Switch, 8 x PoE+ Ports @140W, Metal, Desktop/RackMount
S1900-16T	#132530	S1900-16T, 16-Port Gigabit Ethernet Unmanaged Switch, Metal, Fanless, Desktop/Wall-Mount
S1900-16TP	#132532	S1900-16TP, 16-Port Gigabit Ethernet Unmanaged PoE Switch, 16 x PoE+ Ports@135W, Metal, Fanless, Desktop/Rackmount
S1900-24T	#132531	S1900-24T, 24-Port Gigabit Ethernet Unmanaged Switch, Metal, Fanless, Desktop/Rackmount



 <https://www.fs.com>



The information in this document is subject to change without notice. FS has made all efforts to ensure the accuracy of the information, but all information in this document does not constitute any kind of warranty.