

S1900 Series Unmanaged Switches

Ethernet Unmanaged Switches Ideal for Home Office and SMB

Models: S1900-16T; S1900-24T



Overview

S1900-16T and S1900-24T are Gigabit Ethernet Unmanaged Switches for video surveillance and wired networking in home, offices and SMBs. The switches feature a mini steel shell, a fanless design, all ports support Auto MDI/MDIX function.

With the 6KV professional integrated lightning protection circuit, ensuring the switch to run stably. S1900-16T and S1900-24T are the ideal choice for extension, or upgrade to high-speed and stable gigabit wired network.

Benefits

- Plug and Play, No Configuration Needed
- Fanless Design, Always Working Silently
- Store and Forward Mode
- Support Auto MDI/MDIX
- 6KV Lightning Protection
- MAC Address Auto-learning and Auto-aging

Features

Full Wire-Speed

The switches provide 10/100/1000Base-T auto-negotiation RJ45 ports. All ports feature wire-speed forwarding, supporting IEEE 802.3x full-duplex flow control and half-duplex backpressure flow control, and the full-duplex transmission rate of the switch can reach 2000 Mbps.

Easy to Use

Plug-and-play, which helps you quickly build Gigabit wired network and greatly simplify the management and maintenance of equipment.

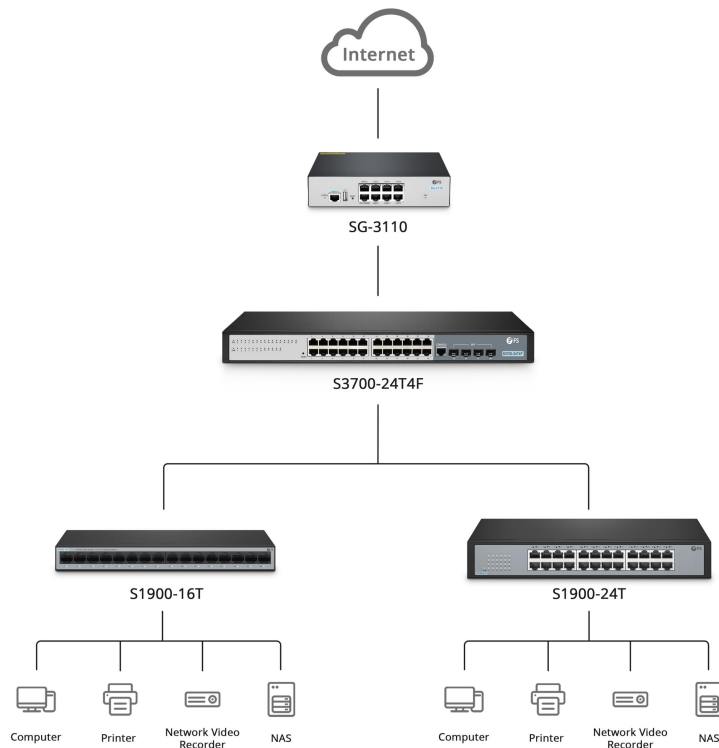
Fanless and Steel Shell

The switches feature a fanless design to extent network without disrupting a quiet office environment, and the metal stainless steel material ensures good heat dissipation performance of the switch, greatly reducing the maintenance cost.

6KV Lightning Protection

Professional integrated lightning protection circuit ensures the switches withstand 6KV lightning surge, 3 times higher than other ordinary switches, effectively protecting the switch from being damaged by adverse thunderstorm.

Application



Technical Specification

S1900 series Gigabit Ethernet unmanaged switches come with an outstanding performance and quality. Here's a look at the details.

Characteristics

	S1900-16T	S1900-24T
Ports		
Ports	16 x 10/100/1000Base-T Auto-Negotiation ports	24 x 10/100/1000Base-T Auto-Negotiation ports
Performance		
Switching Capacity	32Gbps	48Gbps
Forwarding Rate	23.6Mpps	35.7Mpps
Packet Buffer	0.25MB	
Jumbo Frame	10KB	
MAC Address	8K	
Transfer Method	Store-and-Forward	
Lightning Protection	6KV Port Lightning Protection	6KV Port and Power Lightning Protection
Standards and Protocols	IEEE 802.3, IEEE 802.3u, IEEE802.3ab, IEEE802.3x	
Network Media	10BASE-T: UTP Cat3 or better (maximum 100m) 100BASE-T: UTP Cat5 or better (maximum 100m) 1000BASE-T: UTP Cat5e or better (maximum 100m)	
Power		
Power Supply	Input: 100-240V AC 50/60Hz, 0.4A Output: 12V, 1A	Input: 100-240V AC 50/60Hz, 0.7A Output: 12V, 2A
Power Consumption	Maximum: 12W	Maximum: 13W
Physical Specifications		
Fan	Fanless	
Product Material	Steel Shell	
Mounting Methods	Desktop Mounting Wall Mounting	Desktop Mounting Rack Mounting
Dimensions (H×W×D)	1.06"x 9.25"x 4.06" (27x 235x 103mm)	1.73"x 11.57"x 7.01" (44x 294x 178mm)
Environmental Specifications		
Operating Temperature	32°F to 113°F (0°C to 45°C)	32°F to 104°F (0°C to 40°C)

Characteristics

	S1900-16T	S1900-24T
--	-----------	-----------

Environmental Specifications

Storage Temperature	-40°F to 158°F (-40°C to 70°C)
Operating Humidity	10% to 90% (Non-condensing)
Storage Humidity	5% to 90% (Non-condensing)

Warranty

Warranty	2 Years
----------	---------

Ordering Information

FS P/N	ID NO.	Description
S1900-5T	#132526	S1900-5T, 5-Port Gigabit Ethernet SOHO Unmanaged Switch, Metal, Fanless, Desktop/Wall-Mount
S1900-5TP	#132528	S1900-5TP, 5-Port Gigabit Ethernet SOHO Unmanaged PoE Switch, 5 x PoE+ Ports @60W, Metal, Fanless, Desktop/Wall-Mount
S1900-8T	#132527	S1900-8T, 8-Port Gigabit Ethernet SOHO Unmanaged Switch, Metal, Fanless, Desktop/Wall-Mount
S1900-8TP	#132529	S1900-8TP, 8-Port Gigabit Ethernet SOHO Unmanaged PoE Switch, 8 x PoE+ Ports @140W, Metal, Desktop/RackMount
S1900-16T	#132530	S1900-16T, 16-Port Gigabit Ethernet Unmanaged Switch, Metal, Fanless, Desktop/Wall-Mount
S1900-16TP	#132532	S1900-16TP, 16-Port Gigabit Ethernet Unmanaged PoE Switch, 16 x PoE+ Ports@135W, Metal, Fanless, Desktop/Rackmount
S1900-24T	#132531	S1900-24T, 24-Port Gigabit Ethernet Unmanaged Switch, Metal, Fanless, Desktop/Rackmount



 <https://www.fs.com>



The information in this document is subject to change without notice. FS has made all efforts to ensure the accuracy of the information, but all information in this document does not constitute any kind of warranty.