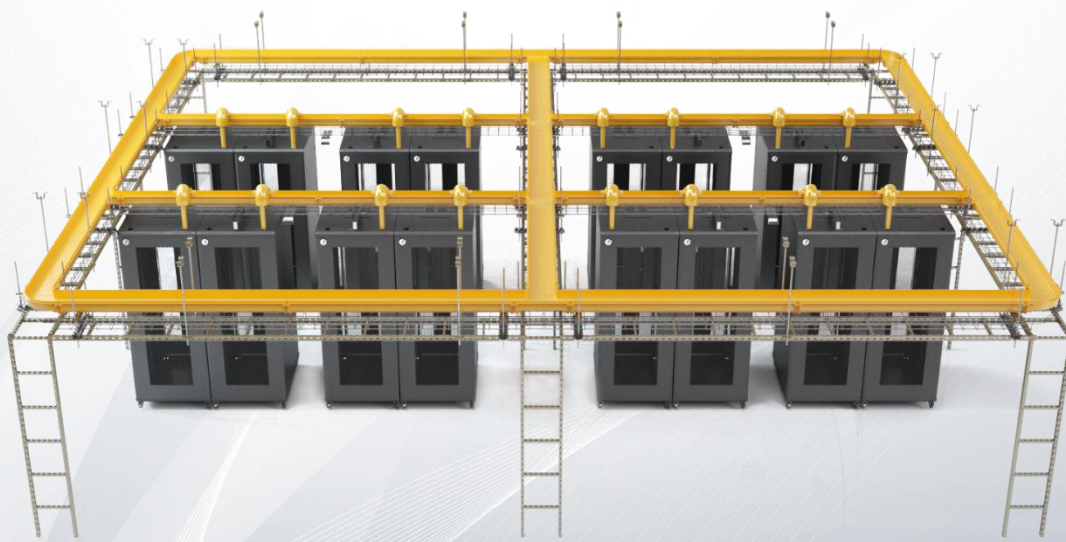


FS Raceway System

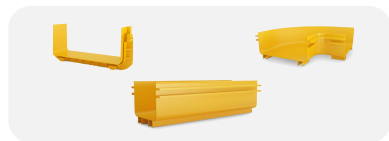
Data Center & Cloud Computing
Infrastructure Solutions



Description

Proper cable management is a fundamental best practice for network infrastructure. Installing a raceway system protects the integrity of the fiber by maintaining a proper bend radius, ensuring maximum performance from your network.

FS raceway system provides a dedicated path for critical network cabling including Fiber Raceway, Wire Mesh Cable Tray, Steel U Cable Ladder, and these three system can be compatible with each other to satisfy your different cable management need.



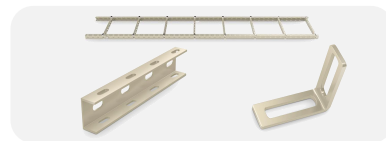
Fiber Raceway

An ideal solution in data centers, head ends, telecom rooms, and wiring closets. FS.COM time-saving raceway ensure that channels and fittings are efficiently assembled.



Wire Mesh Cable Tray

The leading product of the new generation of bridges, providing users with excellent load carrying performance with light weight. It has good heat dissipation, flexible installation.



Steel U Cable Ladder

The necessary engineering tool for standardization of optical cable, five-category wire, cable and cable erection. It has both wiring management and the function of supporting all cable weights.

Features

- Easy to design, configure and install
- High quality flame retardant material
- Dustproof and full arc design, effective protection of wire rod
- Complete parts and sizes
- Larger capacity to route higher cable counts

Application

- Datacenter
- Telecom room
- Petroleum industry
- Factory machine room

Surface Treatment

- Wire Mesh Cable Tray: electro zinc (EZ) for indoor use
- Steel U Cable Ladder: power coated for indoor use

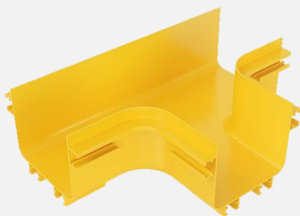
Product Specifications

I. Fiber Raceway



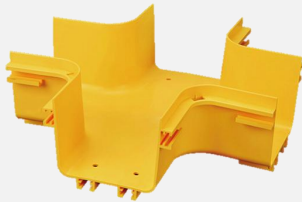
Straight section are used to carry cables horizontally throughout the system.

ID	Part Number	Size	Color	Material
70856	CMRF-SS-120	78.7"x6.2"x4.6"(2000x158x118mm)	Yellow	PVC
70855	CMRF-SS-240	78.7"x10.9"x4.6"(2000x278x117mm)	Yellow	PVC



Horizontal tees are used to branch off the main route or provide a method of breaking into horizontal duct.

ID	Part Number	Size	Color	Material
70860	CMRF-HT-120	13.9"x10.1"x4.6"(352x257x118mm)	Yellow	PVC
70859	CMRF-HT-240	18.7"x14.8"x4.6"(476x377x118mm)	Yellow	PVC
70870	CMRF-C-2412T	13.8"x14.7"x4.6"(350x372x118mm)	Yellow	PVC



Horizontal crosses are used to provide a cross intersection in straight duct.

ID	Part Number	Size	Color	Material
70858	CMRF-HC-120	13.9"x13.9"x4.6"(352x352x118mm)	Yellow	PVC
70857	CMRF-HC-240	18.7"x18.7"x4.6"(476x476x118mm)	Yellow	PVC

70871	CMRF-C-2412C	18.7"x14"x4.6"(476x356x118mm)	Yellow	PVC
-------	--------------	-------------------------------	--------	-----



Joiners are used to connect the straight duct and components together.

ID	Part Number	Size	Color	Material
70862	CMRF-J-120	6.7"x3.3"x4.8"(169x84x122mm)	Yellow	PVC
70861	CMRF-J-240	11.4"x3.3"x4.8"(289x84x122mm)	Yellow	PVC



Horizontal elbows are used to change the direction of horizontal routes.

ID	Part Number	Size	Color	Material
70864	CMRF-E-120	10.1"x10.1"x4.6"(257x257x118mm)	Yellow	PVC
70863	CMRF-E-240	14.9"x14.9"x4.6"(378x378x118mm)	Yellow	PVC



Used to connect horizontal routes at different heights or to allow the fiber path to be raised or lowered to avoid obstacles.

ID	Part Number	Size	Color	Material
70862	CMRF-J-120	6.7"x3.3"x4.8"(169x84x122mm)	Yellow	PVC
70861	CMRF-J-240	11.4"x3.3"x4.8"(289x84x122mm)	Yellow	PVC



Used to connect horizontal routes at different heights or to allow the fiber path to be raised or lowered to avoid obstacles.

ID	Part Number	Size	Color	Material
70868	CMRF-DE-120	7.6"x6.4"x6.4"(194x162x164mm)	Yellow	PVC
70867	CMRF-DE-240	7.4"x11.1"x6.3"(187x282x161mm)	Yellow	PVC



Side drop-off kits provide different methods of allowing fiber optic cables to enter or leave the duct.

ID	Part Number	Size	Color	Material
70872	CMRF-DS	7.3"x7.7"x5.6"(185x195x143mm)	Yellow	PVC
72162	CMRF-DS-130	8.9"x7.6"x6.0"(225x194x152mm)	Yellow	PVC



Attaches any 4"x10" fitting or channel to any 4"x5" fitting or channel.

ID	Part Number	Size	Color	Material
70869	CMRF-C-2412	9.5"x8.1"(240x205mm)	Yellow	PVC



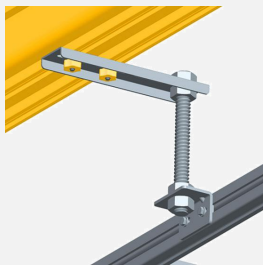
Used to limit the bend radius of the cable to 2" (50.8mm) when exiting from 4"x5" channel, horizontal tee fitting, or 4"x5" exit on 4"x10" vertical tee.

ID	Part Number	Size	Color	Material
72163	CMRF-TS-120	7.0"x2.8"x4.9"(179x70x125mm)	Yellow	PVC



End caps are used to close off the end of a horizontal or vertical route of duct.

ID	Part Number	Size	Color	Material
72164	CMRF-EC-120	6.4"x4.7"x1.0"(163x120x26mm)	Yellow	PVC
72165	CMRF-EC-240	10.6"x4.5"x1.0"(269x114x26mm)	Yellow	PVC



Used to support the raceway system by spanning two existing threaded rod drops. Can be installed from above or below.

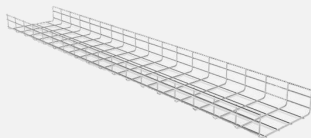
ID	Part Number	Size	Color	Material
70424	CMRF-SK-230	9.1"x2.0"x0.6"(230x50x14.8mm)	Silver	Carbon Steel
70873	CMRF-SK-300	13.8"x2.0"x0.6"(230x50x14.8mm)	Silver	Carbon Steel



Assembles onto 4"x5",4"x10" channel, spilling over the side into a 90mm movable exit.

ID	Part Number	Size	Color	Material
73260	CMRF-CP	2.0"x31.5"(50x800mm)	Yellow	PVC

II. Wire Mesh Cable Tray



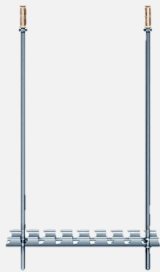
Can be stacked for multilevel installations to save space during transportation or in storage.

ID	Part Number	Size	Color	Material
73937	WMCT-SS-200	118.11"x7.87"x3.94"(2000x158x100mm)	Metal Silver	Carbon Steel
73938	WMCT-SS-400	118.11"x15.75"x3.94"(4000x158x100mm)	Metal Silver	Carbon Steel



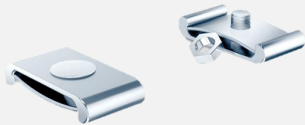
Apply to ground, underfloor or top of the cabinet install, support without screw, fixed with bending protrusion.

ID	Part Number	Accessories	Size	Color	Material
73939	WMCT-CBM-280	T-Supporting Base	3.94"(100mm) H	Metal Silver	Carbon Steel
		T-Trapeze	11.02"/18.9"(280/480mm) L	Metal Silver	Carbon Steel
		M8 Hex Flange Bolt Nut	/	Metal Silver	Carbon Steel



Fix the wire tray on the threaded rod with nuts, hanging from the ceiling.

ID	Part Number	Accessories	Size	Color	Material
73941	WMCT-CLM-280 WMCT-CLM-480	M10 screw	118.11"(3000mm) L	Metal Silver	Carbon Steel
		T-Trapeze	11.02"/18.9"(280/480mm) L	Metal Silver	Carbon Steel
		Expansion sleeve	2.36"(60mm) L	Color zinc	Iron
		M8 Hex Flange Bolt Nut	/	Metal Silver	Carbon Steel



Coupler Kit are used to all of straight sections connection.

ID	Part Number	Size	Color	Material
73943	WMCT-CP	Out-Coupler: 1.26" (3.2mm) L	Metal Silver	Carbon Steel
		In-Coupler: 0.98" (2.5mm) L	Metal Silver	Carbon Steel



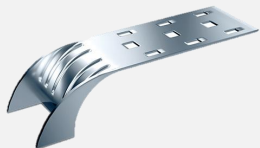
Strengthening bar kit are used to connect the straight sections in the horizontal direction.

ID	Part Number	Size	Color	Material
73951	WMCT-SB	9.57"x0.71"(243x18mm)	Metal Silver	Carbon Steel



For 90° turns or tee joins in horizontal direction.

ID	Part Number	Size	Color	Material
73944	WMCT-SB-90	4.92"x4.92"x0.71"(125x125x18mm)	Metal Silver	Carbon Steel



Exit clip can be in any position lead cable.Support without screw, Fixed with bending protrusion.

ID	Part Number	Size	Color	Material
73952	WMCT-EC	3.54"(90mm) W	Metal Silver	Carbon Steel

III. Steel U Cable Ladder



Can be stacked for multilevel installations to save space during transportation or in storage.

ID	Part Number	Accessories	Size	Color	Material
73945	USCL-SF	Beam	98.43"(2500mm) L	Sand Yellow	Carbon Steel
		Shelf	15.35"(390mm) L	Sand Yellow	Carbon Steel
		M8 Hex Flange Bolt Nut	/	Metal Silver	Carbon Steel



Fix the wire tray on the threaded rod with nuts, hanging from the ceiling.

ID	Part Number	Accessories	Size	Color	Material
73946	USCL-CLM	M12 screw	118.11"(3000mm) L	Metal Silver	Carbon Steel
		L-Clip	2.83"x1.77"(72x45mm)	Sand Yellow	Carbon Steel
		Top hanging	5.20"x1.97"(132x50mm)	Metal Silver	Carbon Steel
		M8 Expansion sleeve	2.17"(55mm) L	Color zinc	Iron
		M8 Hex Flange Bolt Nut	/	Metal Silver	Carbon Steel



Used for the fixing of ceiling and main beam during U-shaped steel hanging installation, or for connection of tee and cross.

ID	Part Number	Size	Color	Material
73950	USCL-BTF	4.92"x1.38"x5.51"(125x35x140mm)	Sand Yellow	Carbon Steel



U-shaped Connection plate are used to connect the straight sections in the horizontal direction.

ID	Part Number	Size	Color	Material
73949	USCL-CNT	7.08"x1.34"x1.1"(180x34x28mm)	Sand Yellow	Carbon Steel



For the U-shaped steel cable rack directly fixed to the wall.

ID	Part Number	Size	Color	Material
73947	USCL-L50	1.97"x1.97"(50x50mm)	Sand Yellow	Carbon Steel



Used for the connection of the tee and cross of the U-shaped steel cable tray.

ID	Part Number	Size	Color	Material
73948	USCL-L100	3.94"x3.94"(100x100mm)	Sand Yellow	Carbon Steel



<https://www.fs.com>



The information in this document is subject to change without notice. FS has made all efforts to ensure the accuracy of the information, but all information in this document does not constitute any kind of warranty.