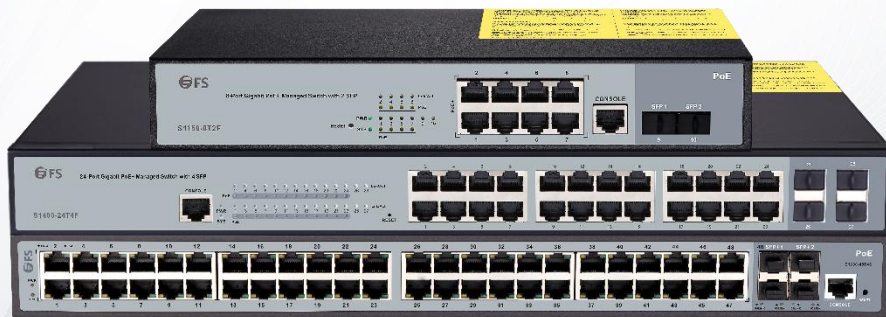


PoE+ Series Switches

COST EFFECTIVE & EFFICIENT POE SOLUTION FOR BUSINESS



Build a better network with PoE+ series switches

FS full Gigabit Ethernet PoE+ switches is a new-generation intelligent access switch designed for enterprise networks, can be used as Ethernet Power Sourcing Equipment (PSE). It can automatically identify the connected devices whether compatible with IEEE 802.3af or IEEE 802.3at standards and supply power for them.

The Gigabit PoE+ switch makes it easier to deploy wireless access point (AP) and IP-based terminal network equipment with PoE technology.

Benefits

- Complete PoE Power Supply
- Varied QoS Policies
- Complete Security Mechanisms
- Support L2+
- Powerful ACL functions
- Support the telecom-level Ethernet-ring protection protocol
- Support various L2 multicast functions

Technical Specification

PoE+ series switches come with the industry-standard hardware and FSOS. Here's a look at the details.

CHARACTERISTICS

	S1150-8T2F	S1400-24T4F	S1600-48T4S
Ports			
Switch Ports	8 x RJ-45 and 2 x SFP	24 x RJ-45 and 4 x SFP	48 x RJ-45 and 4 x SFP+
Operating System			
OS	FSOS	FSOS	FSOS
Key Components			
Switch Chip	RTL8380M	RTL8382M	VITESSE
CPU	MIPS-4K Ec	MIPS-4K Ec	VITESSE
Performance			
Switch Class	Layer 2+	Layer 2+	Layer 2+
Switching Capacity	20Gbps	56Gbps	180Gbps
Forwarding Performance	15Mpps	42Mpps	130.94Mpps
Jumbo Frame	9KB	9KB	9.6KB
MAC Address	8K	8K	32K
Switch Method	Storage and forward	Storage and forward	Storage and forward
Max. Sound Level	45dB	45dB	69dB
Airflow Direction	Front to Back	Right to Left	Left to Right
Power			
Power Consumption (Total)	150W	400W	600W
Power Consumption (Per PoE Port)	Max.30W	Max.30W	Max.30W
Input Range	AC: 100V-240V, 50Hz±10%	AC: 100V-240V, 50Hz±10%	AC: 100-240V,50~60Hz
PoE Standard	Compliant with IEEE802.3af/at	Compliant with IEEE802.3af/at	Compliant with IEEE 802.3af/at

CHARACTERISTICS

	S1150-8T2F	S1400-24T4F	S1600-48T4S
Physical and Environmental			
Dimensions (WxDxH)	280mm x 179mm x 45 mm	440mm x 232mm x 45 mm	440mm x 275mm x 44.5 mm
Rack Space	1U	1U	1U
Unit Weight	1.5kg	3.54kg	6.2kg
Operating Temperature	0° to 50°C	0° to 50°C	-20° to 55°C
Storage Temperature	-20° to 70°C	-20° to 70°C	-40° to 85°C
Operating Humidity	10% to 90%, Non-condensing	10% to 90%, Non-condensing	5% to 95%, Non-condensing
Max. Power Supply Distance	80m	80m	80m

Policy

Warranty	4-years	4-years	4-years
----------	---------	---------	---------

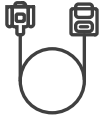
FEATURES

Functionality	Description
	Support L2+.
	Support the telecom-level Ethernet-ring protection protocol with a protection shift time of less than 50ms, STP/RSTP, backup of active and standby uplinks, and LACP link aggregation to cater to the requirements of high reliability of carriers.
PoE Support Features	Switches has powerful ACL functions to access and control L2-L7 data based on physical port, providing carriers flexible and various policy control methods.
	Support various L2 multicast functions such as IGMP-snooping, user fast-leave mechanism.
	Support IEEE 802.3AF/AT standard, built-in large power supply, free of external power supply but with 8/24/48-port AF full load power supply.
Complete PoE Power Supply	Support hot restart and PoE non-stop power supply.
	Support the configuration of electric port priority when the power is inadequate.
	Support up to 2KV thunder-proof of the PoE port and power supply.

FEATURES

Functionality	Description
Varied QoS Policies	<p>Support priority retagging and complicated flow classification based on VLAN, MAC, source address, destination address, IP or priority, better streamlining carrier's services.</p> <p>Provide flexible bandwidth control policies, supporting port-/flow-based flow limit, ensuring the line speed forwarding of each port.</p> <p>Support multiple queue schedule algorithms such as SP, WRR and "SP plus WRR".</p>
Complete Security Mechanisms	<p>Equipment-level security: The advanced hardware infrastructure design realizes the level-based packet schedule and packet protection.</p> <p>Perfect security authentication mechanisms: IEEE 802.1x, Radius.</p> <p>Support storm/multicast/unicast control.</p> <p>Support perfect ring detection mechanism, ensuring the long-term stable running of network.</p> <p>Support port isolation within the same VLAN, DHCP-Snooping, and IP + MAC + Port binding.</p>
Easy Management and Maintenance	<p>Support many management modes such as the console port, Telnet, SSH.</p> <p>Support the WEB management mode, which is easy and efficient for installing and debugging the device.</p> <p>Support TFTP-patterned file upload/download management.</p> <p>Support SNMP and BDCOM NMS smart network management platform. The combination realizes automatic equipment discovery, network topology management, equipment configuration management, performance data statistics and analysis and trouble management.</p>

Accessories



Console Cable*1



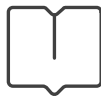
Power Cord*1



Bracket Screw*8



Rack Mount Bracket*2



User Manual*1



Rubber Pad*4

Get started today

Getting started with FS PoE+ series switch is easy. In fact, you can explore and test without spending too much time. Try FS PoE+ series switches, bringing the scalability and agility to the network edge while also lowering total cost of ownership.



<https://www.fs.com>



All statements, technical information, and recommendations related to the products here are based upon information believed to be reliable or accurate. However, the accuracy or completeness thereof is not guaranteed, and no responsibility is assumed for any inaccuracies. Please contact FS for more information.