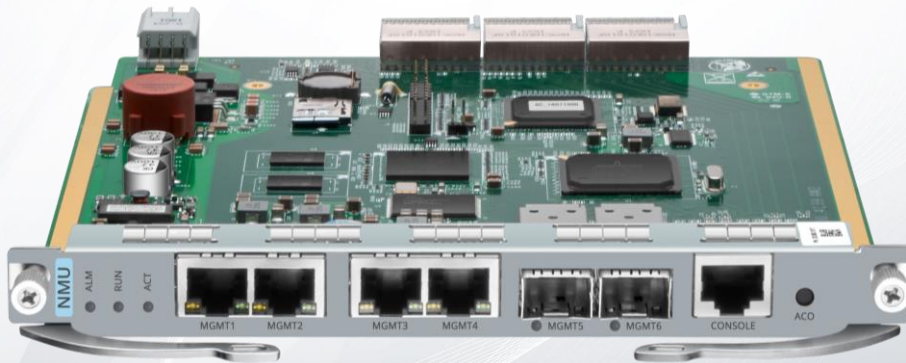


Network Management Unit for M6200 Series 2U Managed Chassis

Occupies One Slot in M6200 Series 2U Managed Chassis



Description

Network Management Unit(NMU) is a system control card for M6200 series management platform. It supports status management and business configuration of backplane, power supply, fan and business cards.

It supports local login (serial port) and remote login for maintenance management, support SNMP v2 management interface and flexible network management on electric ports/optical ports, trap alarm reporting and graphical interface management.

Features

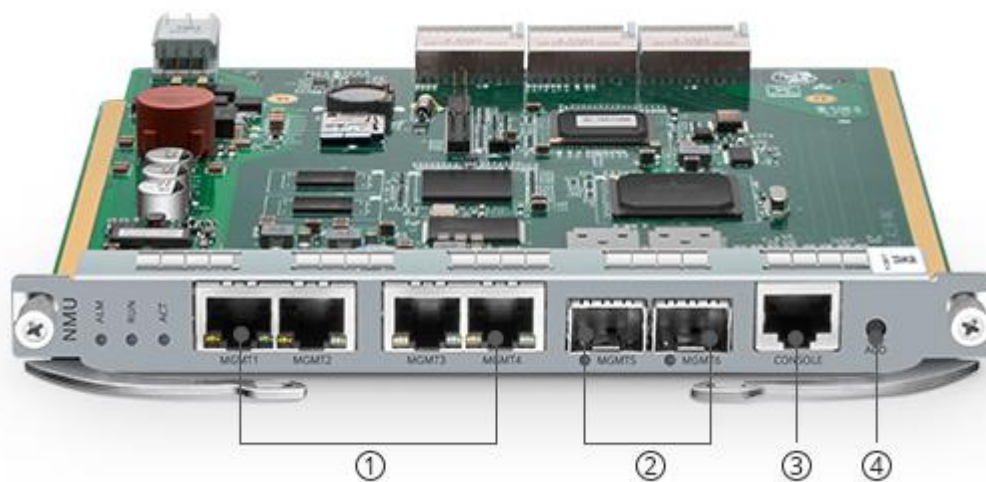
- Support 1+1 backup for high security and manageability
- Occupies one slot in M6200 series 2U managed chassis
- Embedded OSC for out-of-band management
- Support WEB and SNMP v2 management
- Support smooth upgrade without affecting business.
- Support unified management, remote monitoring and fast troubleshooting.

Technical Specifications

Network Management	Description
Management Type	WEB, SNMP v2
Management Interface	1x Console port 2x SFP LAN ports 100Base-X 4x RJ45 LAN ports 10/100Base-T
Redundancy	1+1 backup
Heat Dissipation	Hot swappable
Power Consumption	Max. 10W
2x SFP Ports Speed	10/100Mbps
4x RJ45 Ports Speed	100Mbps
Operating Temperature	0 to 50° C
Storage Temperature	-10 to 70° C
Equipment Status Indicator	ALM, RUN, ACT
Matching Chassis	M6200-CH2U

Note: The NMU module can only be installed in the top 2 slots of the M6200 series 2U managed chassis.

Network Management Unit



- ① 4x RJ45 ETH port: Support for local and cascade management
- ② 2x SFP Port: For in band and out-of-band OSC management
- ③ Console: Debugging & upgrading port
- ④ ACO: Support alarm suppression

Matching Chassis

Hot-swappable MNU module occupies 1 slot in the M6200 series 2U managed chassis.

Width: 444mm (17.48")

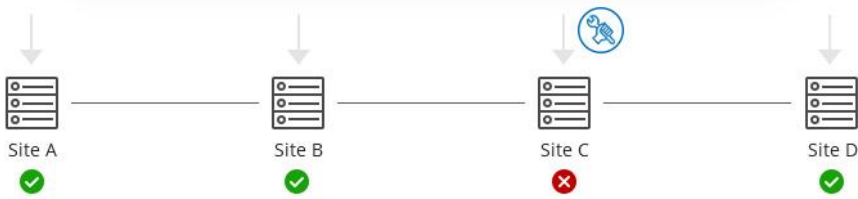
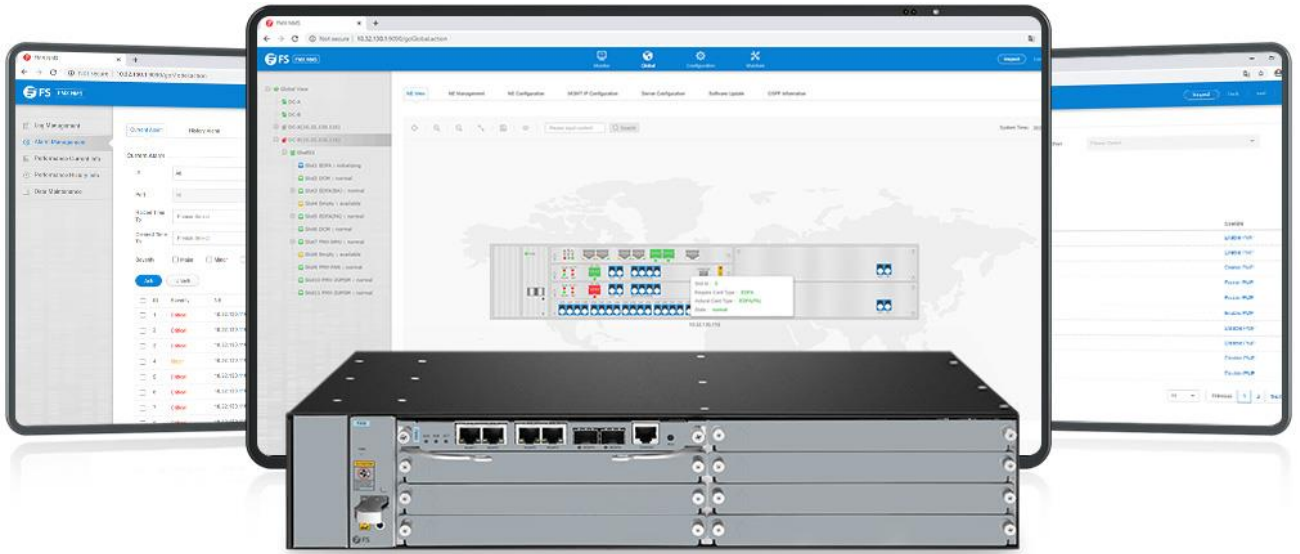
- Height: 88mm (3.46")

- Depth: 325mm (12.80")



Powerful Network Management System

Highly integrated with M6200 series management platform, the NMU module manages all other modules and power supplies installed in the chassis. When an equipment malfunction occurs, a real-time alarm is displayed on the monitoring screen, supporting early discovery of abnormalities.



Management Type

- WEB
- SNMP v2



Fault Management

- Shows current alarms
- Event forwarding to email server



Monitoring Management

- Multi-site remote monitoring
- Optical performance monitoring

Ordering Information

ID	Description
#107366	20dBm Output Optical Booster Pluggable Module, 16dB Gain, LC/UPC
#107367	25dB Gain Optical Pre-Amplifier Pluggable Module, 16dBm Output, LC/UPC
#107368	1+1 Optical Line Protection Switch (OLP), LC/UPC
#107369	1x2 Single Fiber DWDM Red/Blue C Band Filter, Pluggable Module, LC/UPC
#107370	40KM DCF-based Passive Dispersion Compensation Module, LC/UPC
#107365	5 Channels Multi-Rate WDM Converter (Transponder), 10 SFP/SFP+ Slots, 100Mbps to 11.1Gbps Rate
#107373	SFP Variable Optical Attenuator Module for M6200 Series DWDM EDFA
#109705	40 Channels C21-C60 Dual Fiber DWDM Mux Demux with Monitor Port, Pluggable Module, LC/UPC
#107371	M6200 Series 2U Managed Chassis Unloaded, Supports up to 7x EDFA/OEO/OLP Module with Accessories

*Standard products are listed above. Customized specifications are available upon request.



 <https://www.fs.com>



The information in this document is subject to change without notice. FS has made all efforts to ensure the accuracy of the information, but all information in this document does not constitute any kind of warranty.