

M6200 Series 2U Managed Chassis Unloaded

Supports up to 7x EDFA/OEO/OLP Modules with Accessories



Description

M6200 Series 10G 2U managed chassis supports up to 7x EDFA/OEO/OLP modules, which allows you to optimize a solution for your specific network needs. And all critical components, power, management module and interface modules are hot swappable, allowing online field replacement.

It supports out-of-band OSC remote management by the network management system NMS, which has powerful management ability and friendly operation interface.

Features

- Support 1+1 main control card backup
- Support up to 7x EDFA/OEO/OLP modules
- Support WEB, SNMP v2 management
- Embedded OSC for remote management
- Individually controlled dual AC pluggable power supply and fan unit

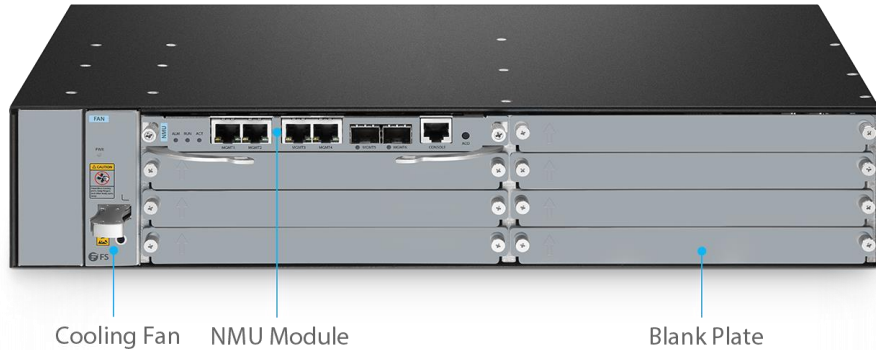
Technical Specifications

Physical Specification	Description
Slot Count	7-slot for EDFA/OEO/OLP module
Enclosure Type	Rack mountable
Power Redundancy	1+1 backup power supply
Power Supply	Dual power, 90VAC~264VAC
Heat Dissipation	1x fan module, hot swappable
Power Consumption	Max. 300W
Operating Temperature	-10 to 50° C
Storage Temperature	-10 to 70° C
Relative Humidity	10% to 90%, no condensing
Dimensions (HxWxD)	3.46"x17.48"x12.80" (88×444×325mm)
Ingress Protection	Non-waterproof
Network Management	Description
Management Interface	1x Console port 2x SFP LAN ports 100Base-X 4x RJ45 LAN ports 10/100Base-T
Management Type	WEB, SNMP v2

Note:

1. The chassis comes with NMU main control card, cooling fan and power supply.
2. The chassis comes with dual AC power supply in default, DC power can be customized, please contact sales@fs.com for more details.

Enhanced Network Reliability and Manageability



NMU Main Control Card

Support 1+1 backup NMU, which provides a high security and manageability in data processing, supporting the function module rapid configuration and intelligent management.

Power Supply

Pluggable 1+1 redundant power, providing stable power supply for the equipment.

Cooling Fan

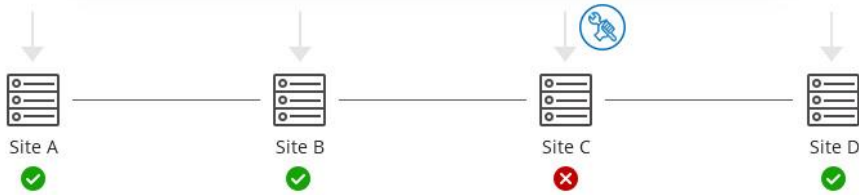
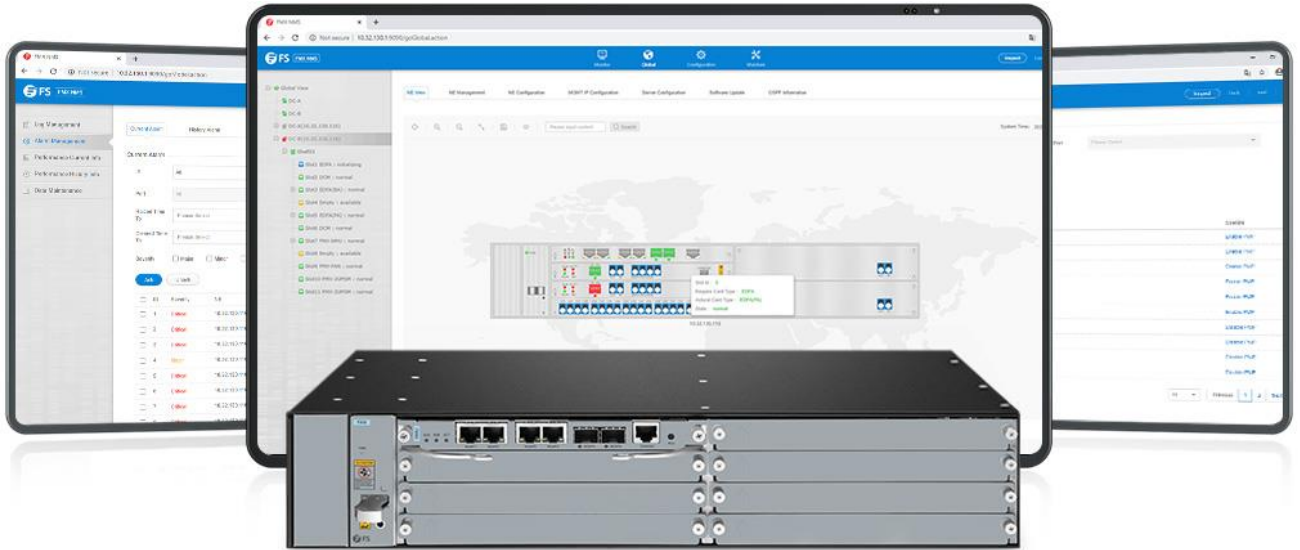
Intelligent temperature control system and optimized design of ventilation, ensuring high energy efficiency with reducing the impact on the business environment.

Blank Plate

Integrated 7xEDFA/OEO/OLP modules, which allows you to optimize a solution for your specific network needs.

Full Management and Monitoring of the Network

Equipped with NMU module, the managed chassis supports managements like WEB and SNMP, which can realize the integrated management to multiple devices. When an equipment malfunction occurs, a real-time alarm is displayed on the monitoring screen, supporting early discovery of abnormalities.



Management Type

- WEB
- SNMP v2



Fault Management

- Shows current alarms
- Event forwarding to email server



Monitoring Management

- Multi-site remote monitoring
- Optical performance monitoring

Dimensions

M6200 series 2U managed chassis, supports up to 7x EDFA/OEO/OLP modules with accessories:

- Width: 444mm (17.48")
- Height: 88mm (3.46")
- Depth: 325mm (12.80")



Accessories



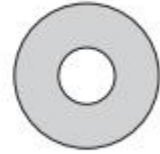
Power Cord x2



Console Cable x1



Ethernet Cable x1



CD x1



Mounting Bracket x2



Cable Manager x1



ESD Wrist Strap x1



Grounding Cable x1



M6 Screw Set x4



M4 Screw x8

Ordering Information

Mux Demux & OADM

	FMU-D402160M3	40 Channels 100GHz C21-C60, with 1310nm and Monitor Port, 3.5dB Typical IL, LC/UPC, Dual Fiber DWDM Mux Demux, 1U Rack Mount #35887
DWDM MUX DEMUX	M6200-D2160M	40 Channels 100GHz C21-C60 Dual Fiber DWDM Mux and Demux with Monitor Port, Pluggable Module, LC/UPC, Integrated with M6200 Series Managed Chassis #120424
	FMU-D162136EM3	16 Channels 100GHz C21-C36, with Monitor, Expansion and 1310nm Port, LC/UPC, Dual Fiber DWDM Mux Demux, 1U Rack Mount #72430
CWDM MUX DEMUX	FMU-MD085360EM3	CWDM/DWDM Hybrid Solution, 8 Channels 100GHz C53-C60, with Monitor, Expansion and 1310nm Port, LC/UPC, Dual Fiber DWDM Mux Demux, FMU Plug-in Module #72433
	FMU-C182761M	18 Channels 1270-1610nm, with Monitor Port, LC/UPC, Dual Fiber CWDM Mux Demux, 1U Rack Mount #33489
	FMU-MC084761EM	8 Channels 1470-1610nm, with Monitor and Expansion Port, LC/UPC, Dual Fiber, Low Insertion Loss CWDM Mux Demux, FMU Plug-in Module #78163
LWDM MUX DEMUX	ABS-L042930A	4 Channels 1295.56-1309.14nm, Single Fiber LAN-WDM Mux Demux, Side-A, ABS Pigtailed Module, LC/UPC #97782
	ABS-C062737A	6 Channels 1271-1371nm, Single Fiber CWDM Mux Demux, Side-A, ABS Pigtailed Module, LC/UPC #97784
OADM	DOADM-DF	Customized Dual Fiber & Single Fiber DWDM OADM #70427
	COADM-DF	Customized Dual Fiber & Single Fiber CWDM OADM #70425
Chassis	FMU-1UFMX-N	FMU 2-Slot 1U 19" Rack Chassis Unloaded, holds up to 2 Units FMU Plug-in Module #30408
	FUD-1UFMX-N	FUD 4-Slot 1U 19" Rack Chassis Unloaded, holds up to 4 Units FUD Plug-in Module #106578

TRANSPONDERS & MUXPONDERS

8x 200G	M6800-TSP16	16x 100G QSFP28 to 8x 200G CFP2 OTN Managed Transport Platform#111053
100G/200G	M6500-TMPX5	2x 100G QSFP28/4x 40G QSFP+ to 1x 200G CFP2 Transponder/Muxponder#111049
Chassis	M6200-OEO10G	5 Channels WDM Transponder (Converter), 10 SFP/SFP+ Slots#107365
	M6500-CH2U	2U Managed Chassis Unloaded Platform, Supports 2x 200G Transponder/Muxponder #96454
	M6500-CH5U	5U Managed Chassis Unloaded Platform, Supports 6x 200G Transponder/Muxponder #111050
	M6200-CH2U	2U Managed Chassis Unloaded Platform, Supports 7x Mux/DEMUX/EDFA/OEO/OLP/DCM Cards #107371
	M6200-CH5U	5U Managed Chassis Unloaded Platform, Supports 15x MUX/DEMUX/EDFA/OEO/OLP/DCM Cards #111052

OPEN LINE SYSTEM

Amplifiers	M6200-25PA	25dB Gain DWDM EDFA Pre-Amplifier, 16dBm Output#107367
	M6200-20BA	20dBm Output DWDM EDFA Booster Amplifier, 16dB Gain#107366
Dispersion Compensation	M6200-DCM40	40KM DCF-based Passive Dispersion Compensation Module#107370
	M6200-DCM80	80KM DCF-based Passive Dispersion Compensation Module#119071
Line Protection	M6200-OLP2	1+1 Optical Line Protection Switch (OLP)#107368
Red/Blue Filter	M6200-RB	1x2 Single Fiber DWDM Red/Blue Filter#107369
VOA Units	M6200-SFPVOA	SFP Variable Optical Attenuator Module#107373
	AT-M-LCU	Fixed Fiber Optic Attenuators #70009
Chassis	M6200-CH2U	2U Managed Chassis Unloaded Platform, Supports 7x Mux/DEMUX/EDFA/OEO/OLP/DCM Cards #107371
	M6200-CH5U	5U Managed Chassis Unloaded Platform, Supports 15x MUX/DEMUX/EDFA/OEO/OLP/DCM Cards #111052

WDM TRANSCEIVERS

100G/200G CFP2	M-CFP2-DCO	C14 1566.31nm 100G/200G Tunable CFP2-DCO Coherent Transceiver, up to 1000km #120128
	DWDM-SFP25G-10	25G DWDM SFP28 100GHz 1563.86nm 10km DOM LC SMF Optical Transceiver Module #87000
25G SFP28	CWDM-SFP25G-40S	25G 1270nm CWDM SFP28 40km DOM LC SMF Optical Transceiver Module #100112
	CWDM-SFP25G-10SP	25G 1270nm CWDM SFP28 10km DOM LC SMF Optical Transceiver Module #76003
	LWDM-SFP25G-40	25G LWDM SFP28 1286.66nm 40km DOM LC SMF Optical Transceiver Module #93786
16G/8G FC	DWDM-SFP16G-40	Customized 16G DWDM SFP+ C20-C61 100GHz 40km DDM LC SMF Transceiver Module#73084
	DWDM-SFP16GH-40	Customized 16G DWDM SFP+ 50GHz 40km DDM LC SMF Transceiver Module #73085
	CWDM-SFP16G-40	Customized 16G Fiber Channel CWDM SFP+ 1470-1610nm 40km DDM LC SMF Transceiver Module #80765

	DWDM-SFP10G-80	10G DWDM SFP+ 1559.79nm 80km DOM LC SMF Transceiver Module, Commercial Temperature#31237, Industrial Temperature#113562
	DWDM-SFP10G-40	10G DWDM SFP+ 1560.61nm 40km DOM LC SMF Transceiver Module, Commercial Temperature#38731, Industrial Temperature#113511
10G SFP+	DWDM-SFP10G-C	10G DWDM C-band Tunable SFP+ 50GHz 80km DOM LC SMF Transceiver Module #69267
	CWDM-SFP10G-80L	10G CWDM SFP+ 1470nm 80km DOM LC SMF Transceiver Module #19367
	CWDM-SFP10G-40S	10G CWDM SFP+ 1270nm 40km DOM LC SMF Transceiver Module, Commercial Temperature#22168, Industrial Temperature#112392
	DWDM-SFP1G-EZX	1000BASE-DWDM SFP 100GHz 1563.86nm 100km DOM LC SMF Transceiver Module #54150
1G SFP	DWDM-SFP1G-ZX	1000BASE-DWDM SFP 1563.86nm 80km DOM LC SMF Transceiver Module #47697
	CWDM-SFP1G-EZX	1000BASE-CWDM SFP 1270nm 120km DOM LC SMF Transceiver Module #102776
	CWDM-SFP1G-ZX	1000BASE-CWDM SFP 1270nm 80km DOM LC SMF Transceiver Module #33234

*Standard products are listed above. Customized specifications are available upon request.



 <https://www.fs.com>



The information in this document is subject to change without notice. FS has made all efforts to ensure the accuracy of the information, but all information in this document does not constitute any kind of warranty.