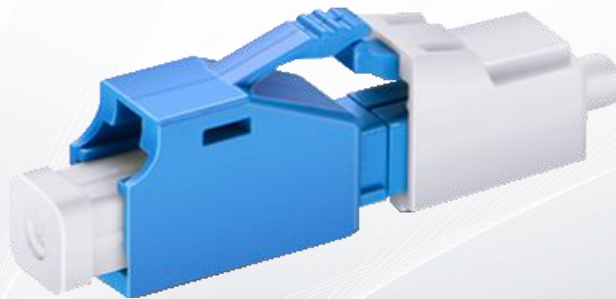


LC/UPC Male-Female Attenuator Datasheet

IDEAL FOR DEBUGGING OPTICAL POWER PERFORMANCE & OPTICAL INSTRUMENT CALIBRATION CORRECTION & FIBER SIGNAL ATTENUATION.

Designed for testing equipment, video transmission, optical fiber communication system, cable television network, optical fiber access network etc.



LC/UPC Singlemode Fixed Fiber Optic Attenuator

As optical passive devices, FS attenuators are mainly used in fiber optic to debug optical power performance & optical instrument calibration correction & fiber signal attenuation. All parts of the attenuator can assemble well without difficulty. It is easy and comfortable to plug in and pull out the connector from these attenuators.

Standards Compliance

- RoHS, ISO9001 and WEEE Compliant
- GR910

Features

- Low insertion loss.
- High-precision ceramic sleeve and smooth inner hole.
- Good degree of concentricity and inner circle.
- Superior repeatability and changeability.
- Excellent anti-aging performance.
- Stable connectivity compatibility.
- Uniform insertion force and good consistency.
- Elaborately designed protection with dust cap and plastic box package.

Technical Specification

Physical Characteristics	Description
Connector Type	LC/UPC
Ferrule Type	Zirconia Ceramic
Transfer Mode	Singlemode
Color	Blue
Max Optical Input Power	200mW
Humidity	95%RH

Experimental Introduction

	Unit	Condition	Values
Scope of loss	dB	UPC&APC	0-30
Attenuation Accuracy	dB	1-9	±0.5dB
		10-25	±10%
Return Loss	dB	UPC	≥55
		APC	≥65
Operating Wavelength	nm	SM	1260~1620
		MM	850,1310
Operating Temp Range	°C		-40~80°C

Matching Products

ID	Description
76119	LC/UPC Singlemode Fixed Fiber Optic Attenuator, Male-Female, 1dB (10pcs/Pack)
76120	LC/UPC Singlemode Fixed Fiber Optic Attenuator, Male-Female, 2dB (10pcs/Pack)
70008	LC/UPC Singlemode Fixed Fiber Optic Attenuator, Male-Female, 3dB (10pcs/Pack)
70009	LC/UPC Singlemode Fixed Fiber Optic Attenuator, Male-Female, 5dB (10pcs/Pack)
72630	LC/UPC Singlemode Fixed Fiber Optic Attenuator, Male-Female, 7dB (10pcs/Pack)
70010	LC/UPC Singlemode Fixed Fiber Optic Attenuator, Male-Female, 10dB (10pcs/Pack)
76121	LC/UPC Singlemode Fixed Fiber Optic Attenuator, Male-Female, 12dB (10pcs/Pack)
70011	LC/UPC Singlemode Fixed Fiber Optic Attenuator, Male-Female, 15dB (10pcs/Pack)



 <https://www.fs.com>



All statements, technical information, and recommendations related to the products here are based upon information believed to be reliable or accurate. However, the accuracy or completeness thereof is not guaranteed, and no responsibility is assumed for any inaccuracies. Please contact FS for more information.