

FHD-FPP5DRL Blank Enclosure

Randomly assembled to meet your different cable management needs



FHD 1U Rack Mount Blank Enclosure

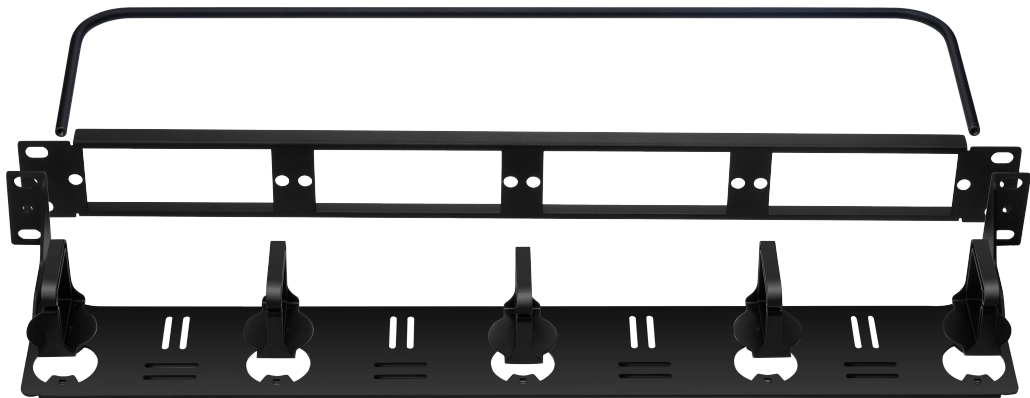
Detachable blank enclosure provides multiple choices for your application by being separated into patch panel, plastic D-rings, lacer panel and lacer bar. The steel lacer panel contains 4 pass-through holes on the 1U for easy to install FHD fiber adapter panels. The horizontal lacer panel with 5 D-rings can match for 1U 19" devices to meet your different cable management needs.

Features

- Compatible with All FHD Cassettes and Panels
- Up to 144 Fibers (LC) or 1,152 Fibers (MTP®-24)
- Hybrid Type for Both Fiber and Copper Solution
- 1U Design, Mount to Standard EIA 19" Rack Rails
- Removable lacer Panel and Bar for Different Cable Management Needs

Standards Compliance

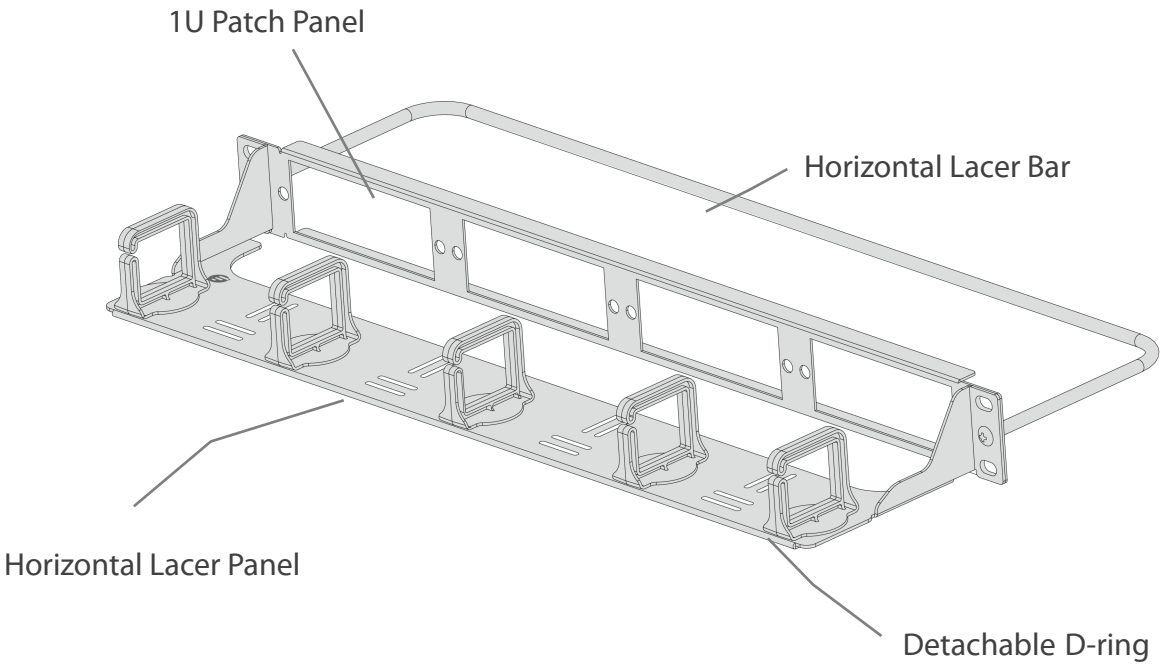
- RoHS Compliant
- ISO9001 Certificate



Product Specifications	
No. of Rack Spaces	1U
Fiber Count	Up to 144 Fibers (LC) or 1,152 Fibers (MTP®-24)
Product Type	Blank Enclosure
Mounting Type	Rack Mount
Shielding Type	Unshielded
Lacing Bar and Panel Material	Steel, Powder-coated Black
D-rings Material	Polycarbonate (PC), UL 94V-2
Dimensions (HxWxD)	1.73"x19"x8.93" (44x482.6x227mm)
Installation	Standard EIA 19" Rack Rails
Loaded	Unloaded
Application	Accepts FHD Adapter Panels/Cassettes

Environmental Characteristics	
Operating Temperature	-25°C to 50°C
Storage Temperature	-40°C to 65 °C
Installation temperature	0°C to 50°C

Assembly Structure Illustration



Accessories List



D-ring × 2



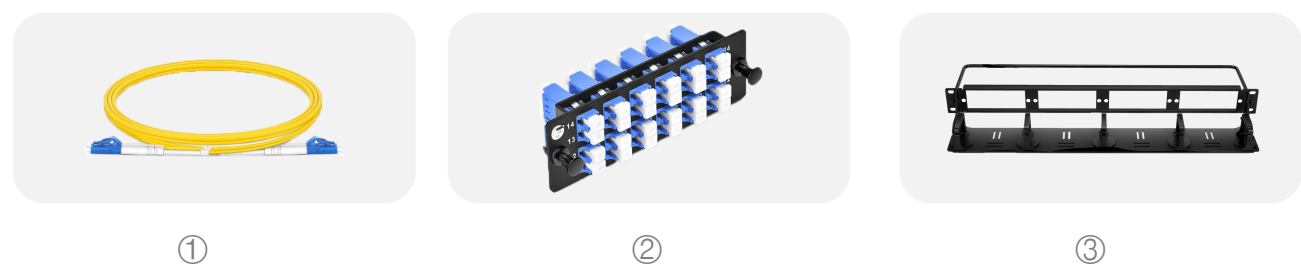
M6*15mm Screw x4 and M6 Nut x4



Installation Guide × 1

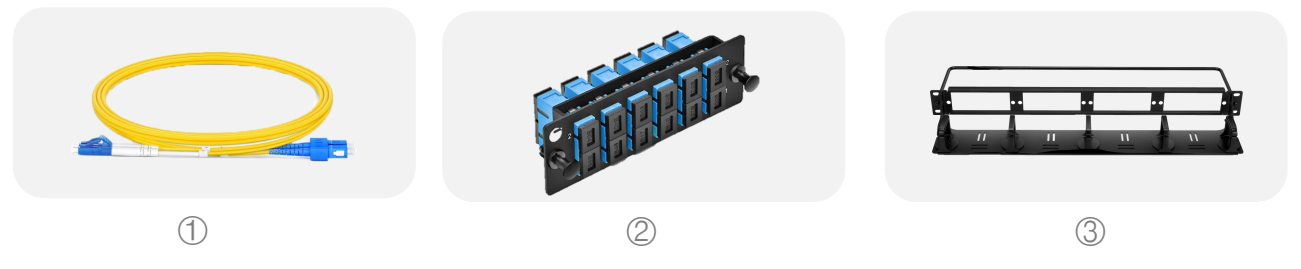
Product Application

I. LC Fiber Patch Cable Connections



Item No.	#ID	Description
1	#40191	1m (3ft) LC UPC to LC UPC Duplex Single Mode Fiber Optic Patch Cable
2	#35488	12x LC Duplex, 24 Fibers OS2 Single Mode FHD Fiber Adapter Panel
3	#72910	FHD 1U Rack Mount Blank Enclosure

II. SC Fiber Patch Cable Connections



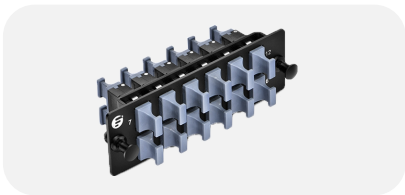
Item No.	#ID	Description
1	#40214	1m (3ft) LC UPC to SC UPC Duplex Single Mode Fiber Optic Patch Cable
2	#35484	6x SC Duplex, 12 Fibers OS2 Single Mode FHD Fiber Adapter Panel
3	#72910	FHD 1U Rack Mount Blank Enclosure

NOTE: The basic application and matching products for blank enclosure are shown for reference.

III. MTP® Cable Connections



①



②



③

Item No.	#ID	Description
1	#68106	5m (16ft) MTP® Female to Female 12 Fibers OM4 50/125 Multimode Trunk Cable, Type A
2	#35510	12x MTP® Key Up to Key Down Adapters FHD Fiber Adapter Panel
3	#72910	FHD 1U Rack Mount Blank Enclosure

IV. Copper and Fiber Patch Cable Connections



①



②



③



④



⑤



⑥

Item No.	#ID	Description
1	#70595	3ft (0.9m) Cat6 Snagless Unshielded (UTP) PVC CM Ethernet Network Patch Cable, Blue
2	#40191	1m (3ft) LC UPC to LC UPC Duplex Single Mode Fiber Optic Patch Cable
3	#41591	Cat6 Keystone RJ45 Coupler, Unshielded, Female to Female Insert Inline Coupler - Blue
4	#76105	LC/UPC to LC/UPC Duplex Single Mode SC Footprint Plastic Fiber Optic Adapter/Coupler with Flange (10pcs/pack)
5	#66602	FHD 6-Port Multimedia Copper/Fiber Modular Panel with 6x Plastic Clips
6	#72910	FHD 1U Rack Mount Blank Enclosure

NOTE: The basic application and matching products for blank enclosure are shown for reference.

FHD Enclosure Capacity

Description	#ID	Part Number	Capacity	Fiber Count
FHD 1U Sliding Rack Mount Enclosure	#70361	FHD-1UFCE	4 ports	144F
FHD 2U Sliding Rack Mount Enclosure	#73205	FHD-2UFCE	8 ports	288F
FHD 4U Sliding Rack Mount Enclosure	#73206	FHD-4UFCE	12 ports	432F
FHD 1U Fixed Rack Mount Enclosure	#96427	FHD-1UFMT-N	4 ports	144F
FHD 1U Modular Rack Mount Enclosure	#70419	FHD-1U-CMP400	4 ports	144F
FHD 1U Blank Rack Mount Enclosure	#72910	FHD-FPP5DRL	4 ports	144F

Fiber Enclosure Loading List

I. Fiber Adapter Panel

Description	#ID (OS2)	#ID (OM4)
24F, 12x LC Duplex Fiber Adapter Panel	#35488	#51284
12F, 6x SC Duplex Fiber Adapter Panel	#35484	#41998
12x MTP® Key Up to Key Down Fiber Adapter Panel	#35510	#35510
8x MTP® Key Up to Key Up Fiber Adapter Panel	#52022	#52022
FHD 6-Port Multimedia Copper/Fiber Modular Panel with 6x Plastic Clips	#66602	#66602

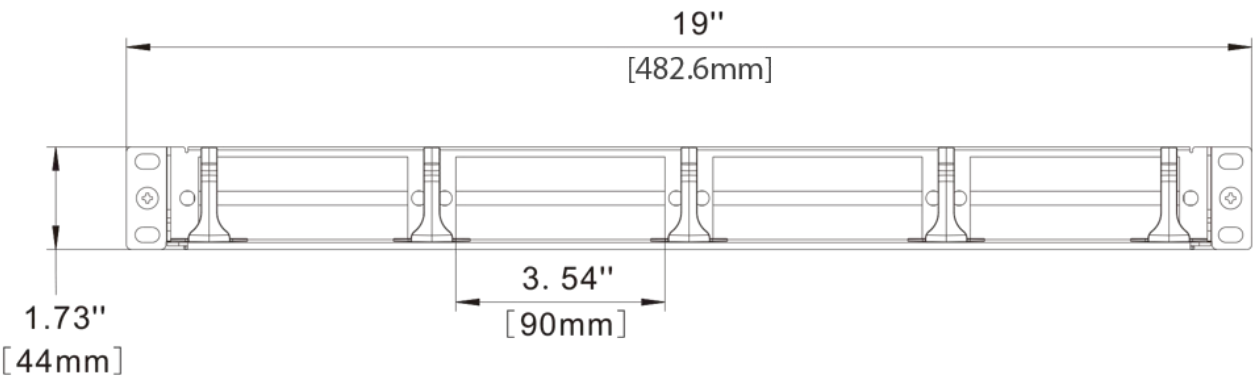
II. MTP®/MPO Cassette

Description	#ID (OS2)	#ID (OM4)
8F, MTP®-8 to 4x LC Duplex Cassette	#68401	#68402
12F, MTP®-12 to 6x LC Duplex Cassette, Type A	#57016	#57017
12F, MTP®-12 to 6x LC Duplex Cassette, Type AF	#57037	#57038
24F, 2x MTP®-12 to 12x LC Duplex Cassette, Type A	#57341	#57342
24F, 2x MTP®-12 to 12x LC Duplex Cassette, Type AF	#68540	#68541
36F, 3x MTP®-12 to 12x LC Duplex Cassette, Type A	#105333	#105335
36F, 3x MTP®-12 to 12x LC Duplex Cassette, Type AF	#105334	#105336
24F, MTP®-24 to 12x LC Duplex Cassette, Type A	#57023	#57024
24F, MTP®-24 to 12x LC Duplex Cassette, Type AF	#68549	#68550

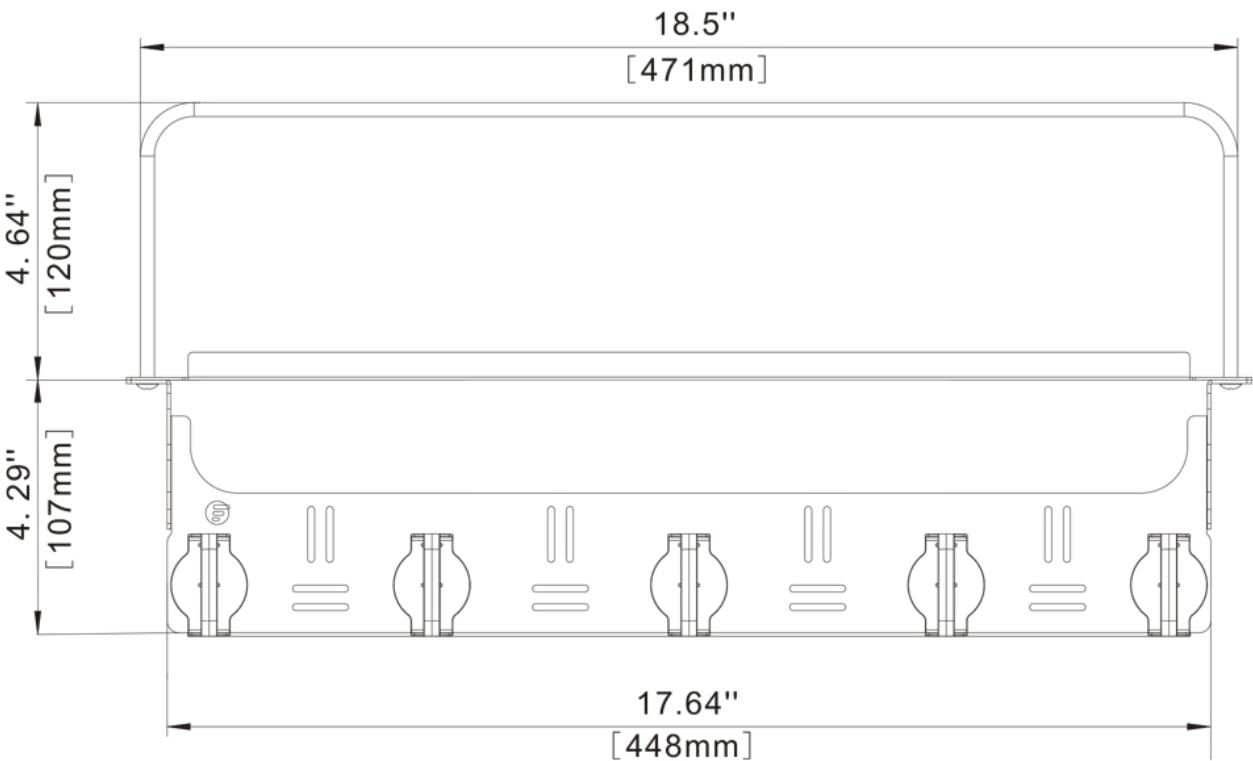
*MTP® is a registered trademark of US Conec Ltd.
*The US Conec MTP® connectors are fully compliant with the MPO standards.

Product Specifications

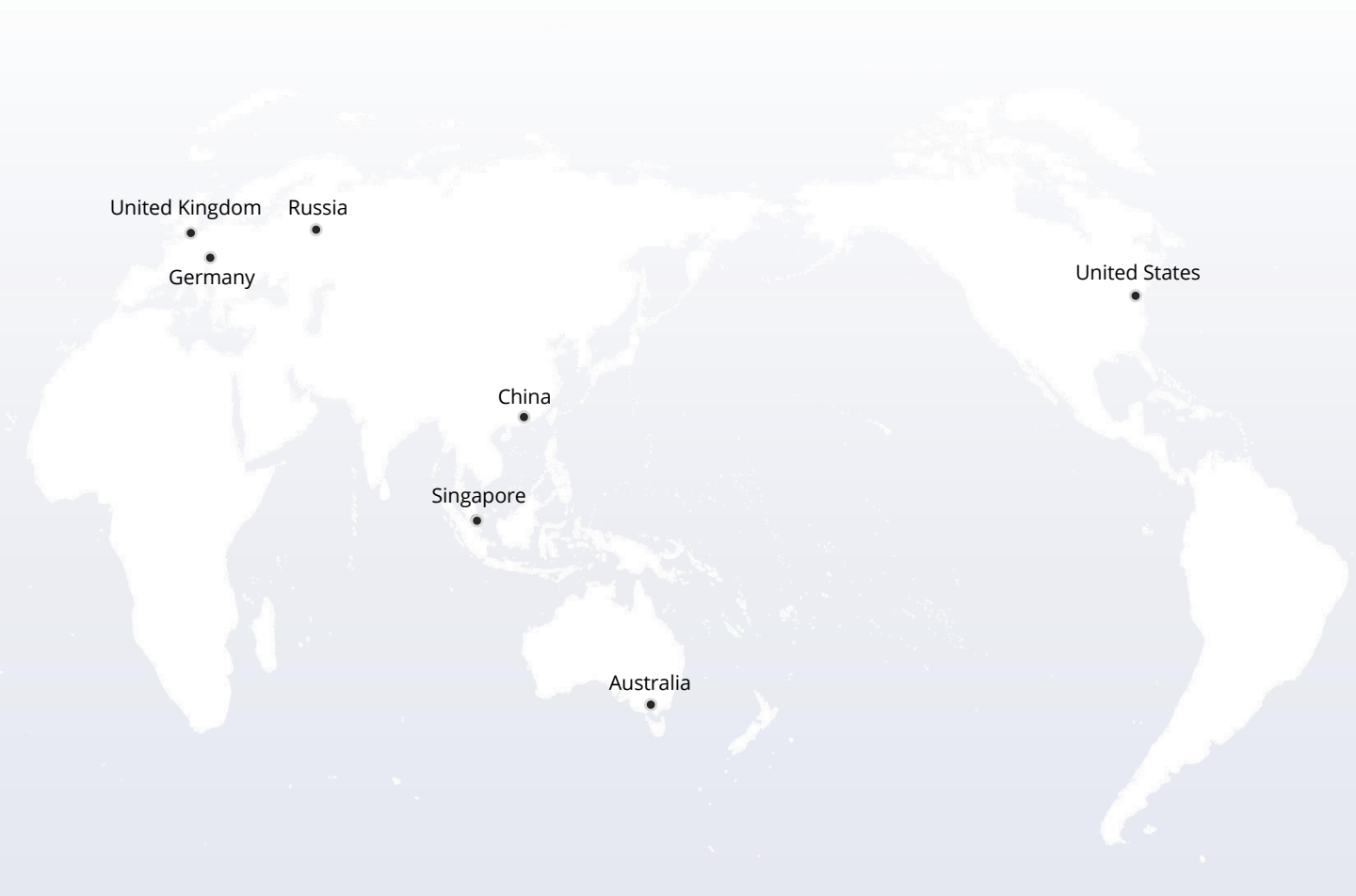
Front View



Top View



Dimensions are in inches. (Dimensions in parentheses are in millimeters).



 <https://www.fs.com>



The information in this document is subject to change without notice. FS has made all efforts to ensure the accuracy of the information, but all information in this document does not constitute any kind of warranty.