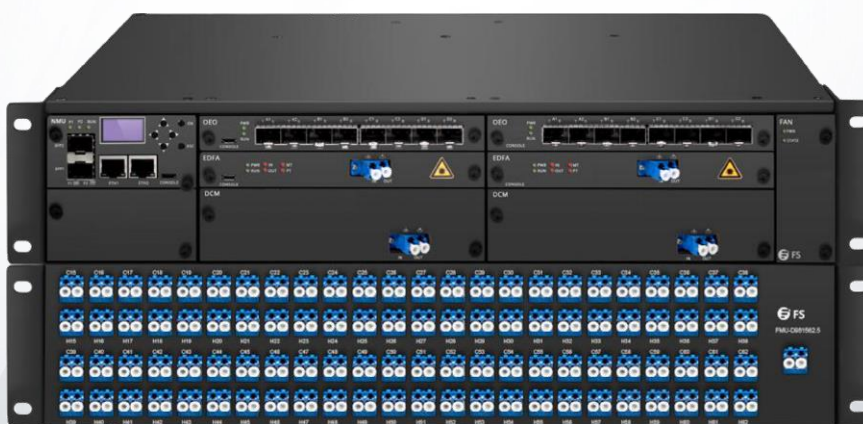


180G - 1T WDM Transport Platform Guide



Description

The 180G - 1T WDM Transport Platform refers to C/DWDM end-to-end dual/single fiber bidirectional integrated optical transport solution, you can choose the required products according to your own demands.

Currently, this type of product contains standardized platforms and customized platforms, and each transmission platform has two sets of equipment.

Features

- **Transmission Distance:** 20km-160km end to end transport
- **Fiber Type:** Single fiber or dual fiber
- **Capacity:** Totally 80G-1T capacity
- **Protocol Transparency:** Support SDH, PDH, OTN, Ethernet, SAN
- **Manageability:** Highly integrated in FMT management platform
- **Robustness:** Redundant hot pluggable power supply units

Application

- OTN long distance optical network
- High capacity DCI for enterprise, cloud computing networks

1. Standardized CWDM Transport Platform

Standardized CWDM Transport Platform is the solution based on CWDM systems, which are relatively more cost-effective and mainly used for short-distance transmission.

Parameter	18CH CWDM Dual Fiber 50km Platform	9CH CWDM Single Fiber 50km Platform
Image		
ID No.	#73805	#76087
Transmission Type	Dual Fiber	Single Fiber
Channels No.	18ch (1270-1610nm)	9ch (Side A: 1270nm-1590nm; Side B: 1290nm-1610nm)
Channel Spacing	20nm	20nm
Client Interface Protocols	SDH/SONET, PDH, OTN, Ethernet, SAN	SDH/SONET, PDH, OTN, Ethernet, SAN
Networking Modes	Point-to-Point	Point-to-Point
Distance	50km @ 1G 16km @ 10G	50km @ 1G 16km @ 10G
Capacity	Up to 180Gbps	Up to 90Gbps
Fiber Link Loss	20dB (0.4dB/km)	20dB (0.4dB/km)
Fiber Type	G.652D	G.652D
Power Supply	Dual power, 100V-240VAC	Dual power, 100V-240VAC
Management Protocols	SNMPv1, Monitor Online, Simple Management Tool	SNMPv1, Monitor Online, Simple Management Tool
Quality Certification	CE, FCC, RoHS	CE, FCC, RoHS
Operating Temperature	-5~60°C	-5~60°C
Storage Temperature	-40~80°C	-40~80°C
Dimensions (HxWxD)	1.75"x19"x11.81" (44.5x482.6x300mm)	1.75"x19"x11.81" (44.5x482.6x300mm)

2. Standardized DWDM Transport Platform

Standardized DWDM Transport Platform is the solution based on DWDM systems, which can be used with EDFA, DCM and etc to support long-haul and high capacity transmission.

2.1 General Transport Platform

Parameter	160G DWDM Platform	400G DWDM Platform	960G DWDM Platform
Image			
ID No.	#76086	#73807	#76084
Transmission Type	Dual Fiber	Dual Fiber	Dual Fiber
Channels No.	16CH (C21-C36)	40CH (C21-C60)	96CH (CH15-CH62)
Channel Spacing	100GHz (0.8nm)	100GHz (0.8nm)	50GHz (0.4nm)
Client Interface Protocols	SDH/SONET, PDH, OTN, Ethernet, SAN	SDH/SONET, PDH, OTN, Ethernet, SAN	SDH/SONET, PDH, OTN, Ethernet, SAN
Networking Modes	Point-to-Point	Point-to-Point	Point-to-Point
Distance	60km @ 10G	100km @ 10G	80km @ 10G
Capacity	Up to 160Gbps	Up to 400Gbps	Up to 960Gbps
Fiber Link Loss	15dB (0.25dB/km)	25dB (0.25dB/km)	20dB (0.25dB/km)
Fiber Type	G.652D	G.652D	G.652D
Power Supply	Dual power, 100V-240VAC	Dual power, 100V-240VAC	Dual power, 100V-240VAC
Management Protocols	SNMPv1, Monitor Online, Simple Management Tool	SNMPv1, Monitor Online, Simple Management Tool	SNMPv1, Monitor Online, Simple Management Tool
Quality Certification	CE, FCC, RoHS	CE, FCC, RoHS	CE, FCC, RoHS
Operating Temperature	-5~60°C	-5~60°C	-5~60°C
Storage Temperature	-40~80°C	-40~80°C	-40~80°C
Dimensions (HxWxD)	3.39"x19"x11.81" (86x482.6x300mm)	7"x19"x11.81" (178x482.6x300mm)	FMT managed chassis: 7"x19"x11.81" (178x482.6x300mm) 96ch DWDM Mux Demux: 3.47"x19"x9.84" (88.1x482.6x250mm)

2.2 Long Distance Transport Platform

Parameter	160G DWDM Platform	400G DWDM Platform	960G DWDM Platform
Image			
ID No.	#73806	#76085	#73808
Transmission Type	Dual Fiber	Dual Fiber	Dual Fiber
Channels No.	16CH (C21-C36)	40CH (C21-C60)	96CH (CH15-CH62)
Channel Spacing	100GHz (0.8nm)	100GHz (0.8nm)	50GHz (0.4nm)
Client Interface Protocols	SDH/SONET, PDH, OTN, Ethernet, SAN	SDH/SONET, PDH, OTN, Ethernet, SAN	SDH/SONET, PDH, OTN, Ethernet, SAN
Networking Modes	Point-to-Point	Point-to-Point	Point-to-Point
Distance	120km @ 10G	160km @ 10G	100km @ 10G
Capacity	Up to 160Gbps	Up to 400Gbps	Up to 960Gbps
Fiber Link Loss	30dB (0.25dB/km)	40dB (0.25dB/km)	25dB (0.25dB/km)
Fiber Type	G.652D	G.652D	G.652D
Power Supply	Dual power, 100V-240VAC	Dual power, 100V-240VAC	Dual power, 100V-240VAC
Management Protocols	SNMPv1, Monitor Online, Simple Management Tool	SNMPv1, Monitor Online, Simple Management Tool	SNMPv1, Monitor Online, Simple Management Tool
Quality Certification	CE, FCC, RoHS	CE, FCC, RoHS	CE, FCC, RoHS
Operating Temperature	-5~60°C	-5~60°C	-5~60°C
Storage Temperature	-40~80°C	-40~80°C	-40~80°C
Dimensions (HxWxD)	7"x19"x11.81" (178x482.6x300mm)	FMT managed chassis: 7"x19"x11.81" (178x482.6x300mm) Raman Amplifier: 1.75"x19"x9.29" (44.5x482.6x236mm)	FMT managed chassis: 3.39"x19"x11.81" (86x482.6x300mm) 96ch DWDM Mux Demux: 3.47"x19"x9.84" (88.1x482.6x250mm)

3. Customized WDM Transport Platform

Customized WDM Transport Platform is the solution based on DWDM systems, which can be used with EDFA, DCM and etc to flexibly meet the various demands of customers.

Parameter	Customized 8CH DWDM Platform	Customized 16CH DWDM Platform	Customized 40CH DWDM Platform
Image			
ID No.	#90936	#90935	#90934
Fiber Type	Dual Fiber	Dual Fiber	Dual Fiber
Channels No.	8CH (C53-C60 at 100GHz)	16CH (C21-C36 at 100GHz)	40CH (C21-C60 at 100GHz)
Channel Spacing	100GHz (0.8nm)	100GHz (0.8nm)	100GHz (0.8nm)
Client Interface Protocols	SDH/SONET, PDH, OTN, Ethernet, SAN	SDH/SONET, PDH, OTN, Ethernet, SAN	SDH/SONET, PDH, OTN, Ethernet, SAN
Networking Modes	Point-to-Point	Point-to-Point	Point-to-Point
Distance	20-140km @ 10G	20-140km @ 10G	20-140km @ 10G
Capacity	Up to 80Gbps	Up to 160Gbps	Up to 400Gbps
Fiber Link Loss	5-35dB (0.25dB/km)	5-35dB (0.25dB/km)	5-35dB (0.25dB/km)
Fiber Type	G.652D	G.652D	G.652D
Power Supply	Dual power, 100V-240VAC	Dual power, 100V-240VAC	Dual power, 100V-240VAC
Management Protocols	SNMPv1, Monitor Online, Simple Management Tool	SNMPv1, Monitor Online, Simple Management Tool	SNMPv1, Monitor Online, Simple Management Tool
Quality Certification	CE, FCC, RoHS	CE, FCC, RoHS	CE, FCC, RoHS
Operating Temperature	-5~60°C	-5~60°C	-5~60°C
Storage Temperature	-40~80°C	-40~80°C	-40~80°C

4. Ordering Information

ID	Description
76087	9 Channels CWDM Single Fiber 50km End-to-End Transport Platform (Set of Two)
73805	18 Channels CWDM Dual Fiber 50km End-to-End Transport Platform (Set of Two)
90936	8 Channels DWDM Dual Fiber 20-140km End-to-End Transport Platform (Set of Two)
76086	16 Channels DWDM Dual Fiber 60km End-to-End Transport Platform (Set of Two)
73806	16 Channels DWDM Dual Fiber 120km End-to-End Transport Platform (Set of Two)
90935	16 Channels DWDM Dual Fiber 20-140km End-to-End Transport Platform (Set of Two)
73807	40 Channels DWDM Dual Fiber 100km End-to-End Transport Platform (Set of Two)
76085	40 Channels DWDM Dual Fiber 160km End-to-End Transport Platform (Set of Two)
90934	40 Channels DWDM Dual Fiber 20-140km End-to-End Transport Platform (Set of Two)
76084	96 Channels DWDM Dual Fiber 80km End-to-End Transport Platform (Set of Two)
73808	96 Channels DWDM Dual Fiber 100km End-to-End Transport Platform (Set of Two)

Note: If these WDM Transport Platforms can not meet your demands, please contact our expert consultant otn@fs.com for customized solution.



 <https://www.fs.com>



The information in this document is subject to change without notice. FS has made all efforts to ensure the accuracy of the information, but all information in this document does not constitute any kind of warranty.