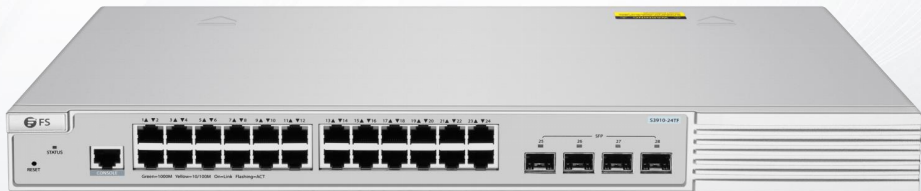


# Transceivers DACs and AOCs Supported on S3910-24TF Switch



## Supported Transceivers and Cables Information

The following tables list supported 1G SFP transceivers for S3910-24TF switch. They were tested by FS technicians to ensure compatibility.

## Model of Switch

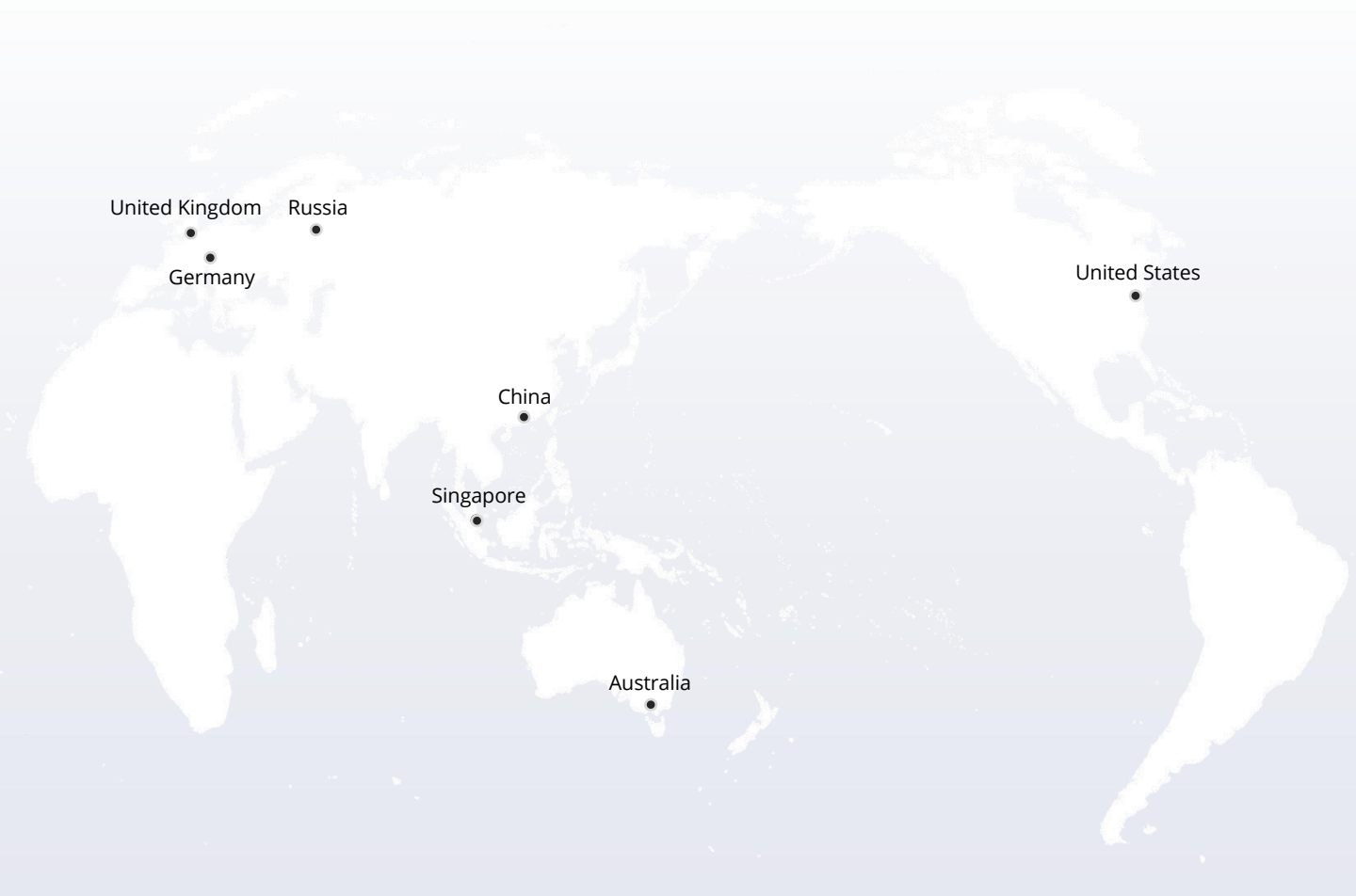
- S3910-24TF

### S3910-24TF Switch Compatible State

S3910-24TF switch is compatible with a variety of high-speed cables and transceivers . Here’s a look at the details.

#### Transceiver Compatible Datasheet

Description	ID	Rate	S3910-24TF			Remarks
			Compatibility	Transmission	Loss (%)	
SFP-GB-GE-T	20057	1G	√	√	0	
SFP1G-SX-85	29838	1G	√	√	0	
SFP1G-LX-31	29849	1G	√	√	0	
SFP1G-EX-55	29854	1G	√	√	0	
SFP1G-ZX-55	29856	1G	√	√	0	
SFP-GE-BX-3/4	29894	1G	√	√	0	
SFP-GE-BX-4/3	29895	1G	√	√	0	
CWDM-SFP1G-ZX	/	1G	√	√	0	
DWDM-SFP1G-ZX	/	1G	√	√	0	



 <https://www.fs.com>



The information in this document is subject to change without notice. FS has made all efforts to ensure the accuracy of the information, but all information in this document does not constitute any kind of warranty.