

S5850 Series vs S5860 Series

Explore how FS Switches can enable your high-speed campus network.



S5850 and S5860 Series Switches Overview



S5850 series switches have a total of 14 models, with 16/24/32/48 ports, support 10G/25G network connection and customized AC/DC power services, providing diversified options for your enterprise network.

The S5860 series switches use leading Broadcom chips and have 24/48 ports. They also support high-density networks and provide POE+ performance to meet your 10G network construction.



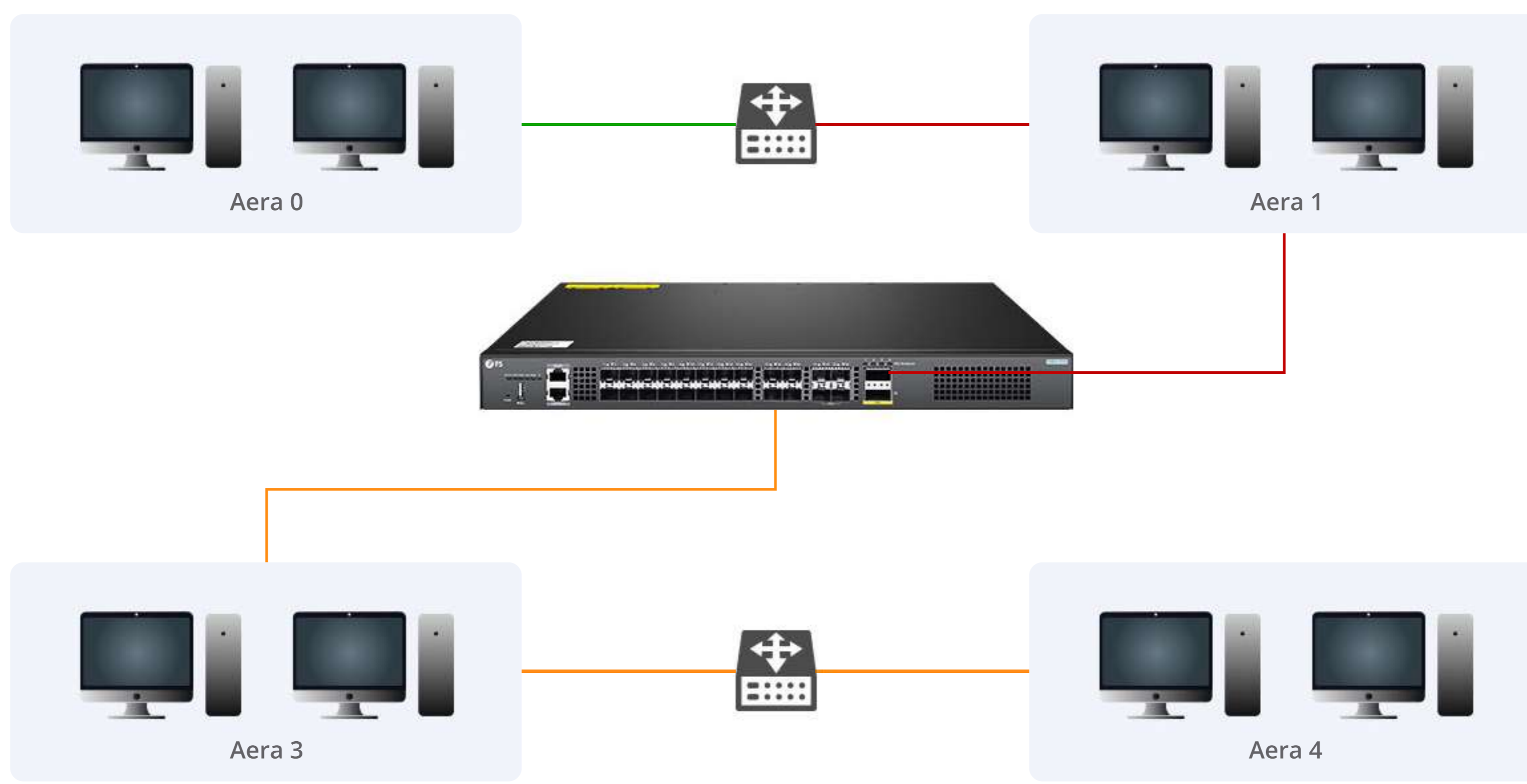
The Specific Difference Between S5850 and S5860

Both the S5850 and S5860 have their own advantages. The S5850 supports MLAG and the S5860 supports stacking, both of which can realize business expansion and convenient management. Surely, their outstanding advantages are just as shown in the figure below.

S5850 establish point-to-point connections through MPLS.



The S5860 features OSPF performance, simplifying your network management.



Switches	S5850 Series	S5860 Series
Ports	16/24/32/48 ports	24/48 ports
Downlinks	10G/25G	10G
Switch Chip	/	BCM Chip
Customeried AC/DC	✓	/
MLAG/Stacking	MLAG	Stacking
MPLA/VPLS	✓	/
PFC/ECN	✓	/
QoS	✓	✓
IPv4/IPv6	✓	✓

Application Scenario Analysis



S5860-24XB-U with PoE++ ports simplifies network infrastructure.

