

S3700 Series Switch Typical Network Solution

Model: S3700-24T4S

Overview

FS S3700-24T4F switch is a managed switch that provides full layer 2 traffic management features and simple network management via Web GUI. In addition to the characteristics above, S3700-24T4F has a fanless design.

For some small business or people working at home, the more they are concerned maybe noise because switches are kept within a rack or even outside the rack. In this case, low-noise fanless switches are essential for them to have a comfortable and quiet working environment.

FS provides a power-saving and economical S3700-24T4F switch solution. The solution is completely silent and ideally suited for open office deployments, retail stores, home offices, hotels, and commercial applications such as low-density branch offices and SMB enterprise workgroups.



S3700-24T4F (24x 10/100/1000BASE-T RJ45, 4x 1G SFP)



Hotel Network Solution Case Study

Background

A customer who specializes in distributed wireless services for beach resorts/condominiums is looking for a silent solution to build Wi-Fi and surveillance network for client's five floors hotel.

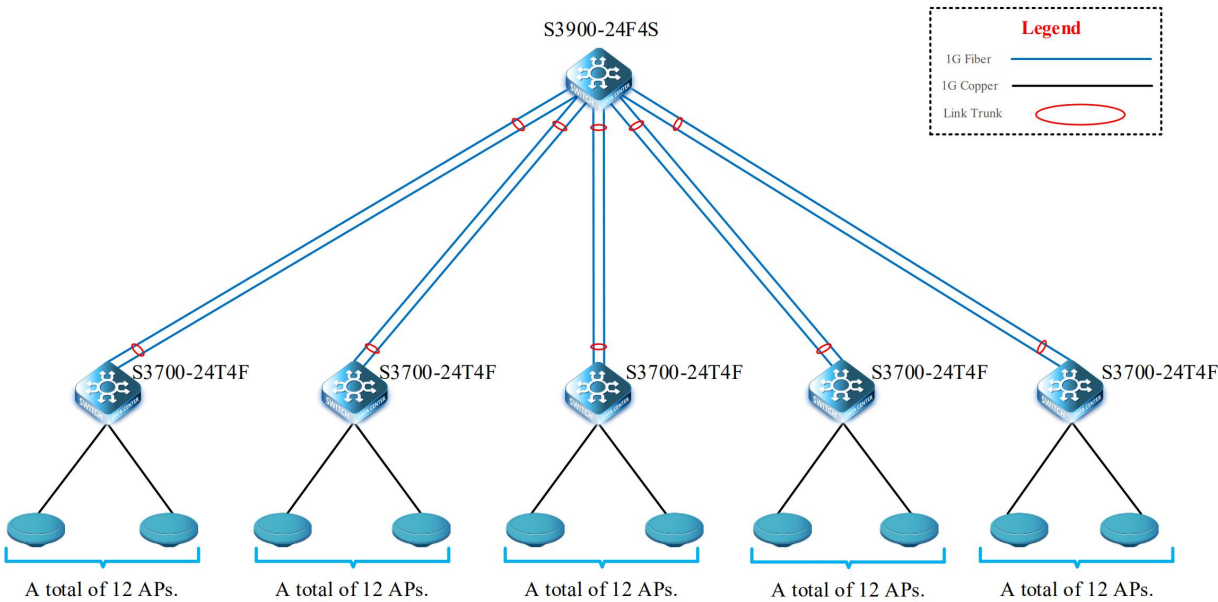
They need a cost-effective and low-noise operating solution.

Challenge

Each floor should have one access switch for total 12pcs AP and some cameras. Since the AP and cameras wires are pre-buried, no additional power is required.

Due to the particularity of the hotel, The switches here must have very low level noise.

Solution Topology



Solution Description

For low-noise and low-cost requirement, we recommend the S3700-24T4F switch. With fanless design feature, the noise is extremely low during working normally. Considering the number of APs and other devices, 12 ports of 10/100/1000BASE-T Gigabit ports are enough, and the remaining ports can be used for redundancy. If you need to add more cameras or APs in the future, you can use the remaining ports directly.

Connection: S3700-24T4F switch is used as access switch to connect the end AP on each floor. S3900-24F4S is used as an aggregation switch to connect 5pcs S3700-24T4F switches.

LACP: Each S3700-24T4F and S3900-24F4S are connected through two optical fiber cables, and LACP is configured to increase the link bandwidth while increasing the link redundancy, so as to avoid a single link failure and whole service is interrupted.

Management: Support Web and SNMP management. For regular people, they can use Web to manage entire network simply. For engineers, they can use SNMP for fast operation.

Innovative Design: Unique, cost-effective switch design enables new architectures that reduce cost and complexity, while unified management and automation tools consolidate system monitoring.

Product List

ID	Description
72945	S3900-24F4S 20-Port Gigabit Stackable SFP Managed Switch with 4 Combo SFP and 4 10Gb SFP+ Uplinks
84912	S3700-24T4F Fanless 24-Port 10/100/1000BASE-T Gigabit Managed Switch with 4 SFP Ports
11774	Cisco GLC-SX-MM Compatible 1000BASE-SX SFP 850nm 550m DOM Transceiver Module
41730	1m (3ft) LC UPC to LC UPC Duplex OM3 Multimode PVC (OFNR) 2.0mm Fiber Optic Patch Cable
70555	3ft (0.9m) Cat5e Snagless Unshielded (UTP) PVC CM Ethernet Network Patch Cable, Blue
84026	733Mbps 2x2 MIMO Dual-Band FAT/FIT Wireless Access Point

Farm Network Solution Case Study

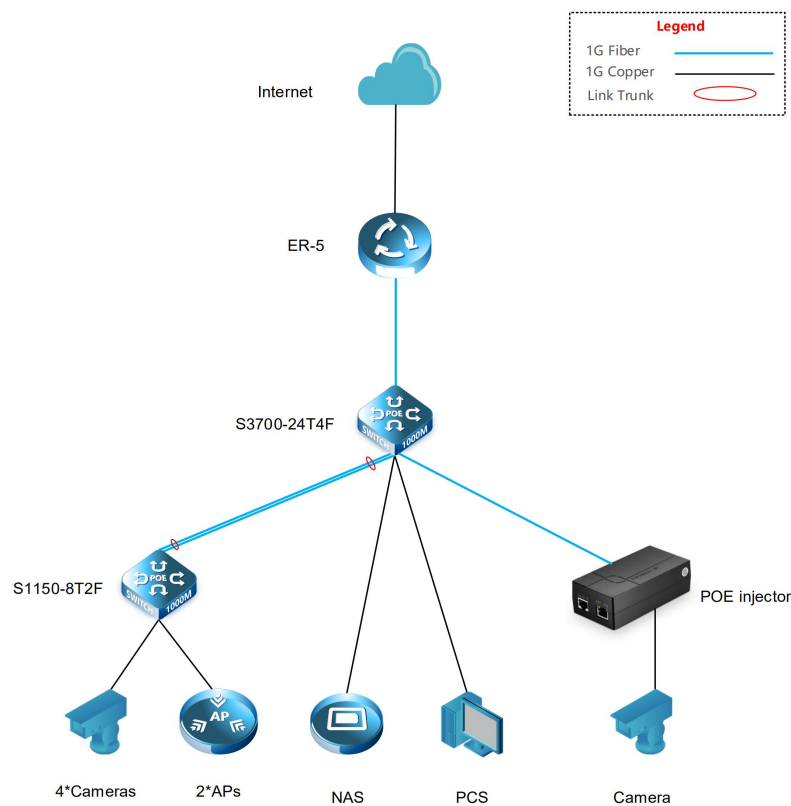
Background

The customer wants to set up a new home network for his farm, to add a NAS for streaming movies (Plex).. The solution is mainly used for accessing the net, Netflix, spottily, online gaming. He needs a new router and switch for the desktops and IOT but to also put in a PoE+ switch for a couple of Wi-Fi access points.

Challenge

The problem is that he has a very large house and the wifi doesn't extend down to the other end of the house. He needs the solution to be able to control the automatic gate all via wifi, and a camera should be installed at the gate, which is about 150 meters from the house, also 5 cameras should be added for home security.

Solution Topology



Solution Description

Considering the requirement for farm, we recommend using a low-cost S3700-24T4F managed switch to connect the NAS, PC. And then use S1150-8T2F PoE+ switch to connect five cameras on the farm. The whole solution is cost effective and easy to manage, which is suitable for this farm application.

Connection:

ER-5 router: A new generation of high-performance Internet exit gateways using the high-performance MIPS multi-core processors for the business requirements of various users and services as well as the heavy traffic.

SS3700-24T4F switch: Used to connect PoE switches and desktops, PlayStation and PoE injector devices, and then the PoE injector device is connected to the gate camera.

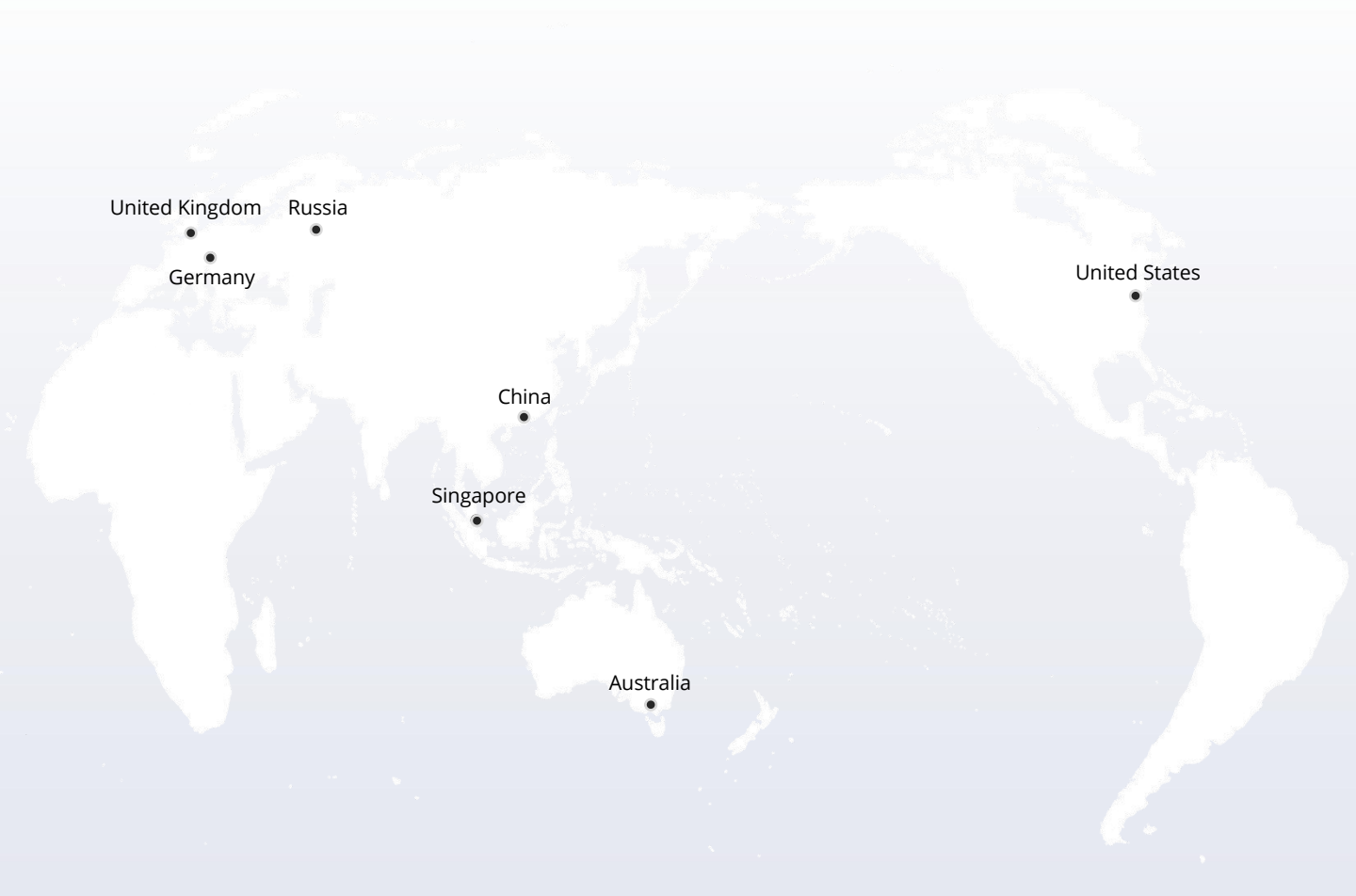
S1150-8T2F PoE+ switch: 8 Gigabit electrical ports are used to connect 5 cameras for surveillance and 2 AP wireless devices to provide power.

LACP: By configuring link aggregation between S3700-24T4F and S1150-8T2F, bandwidth can be increased and reliability is improving. If there is a single link failure, and other links can forward traffic normally for work.

Product List

ID	Description
84912	S3700-24T4F Fanless 24-Port 10/100/1000BASE-T Gigabit Managed Switch with 4 SFP Ports
73457	8-Port Gigabit PoE+ Managed Switch with 2 SFP, 150W
72941	5-Port Gigabit VPN Router
84026	733Mbps 2x2 MIMO Dual-Band FAT/FIT Wireless Access Point
65989	Single Port 10/100/1000M Gigabit PoE Injector
43134	1m (3ft) LC UPC to LC UPC Duplex OM2 Multimode PVC (OFNR) 2.0mm Fiber Optic Patch Cable
70555	3ft (0.9m) Cat5e Snagless Unshielded (UTP) PVC CM Ethernet Network Patch Cable, Blue
11774	Cisco GLC-SX-MM Compatible 1000BASE-SX SFP 850nm 550m DOM Transceiver Module

NOTE: If you have any questions or requirements, please contact FS technician team or your Account manager for personalized services: https://www.fs.com/solution_support.html



 <https://www.fs.com>



The information in this document is subject to change without notice. FS has made all efforts to ensure the accuracy of the information, but all information in this document does not constitute any kind of warranty.