

# PoE+ Series Switches Reset and Recovery System Configuration Guide

---

Models: S3150-8T2FP  
S3260-8T2FP  
S3260-16T4FP  
S3400-24T4FP  
S3400-48T4SP  
S5500-48T8SP

## Contents

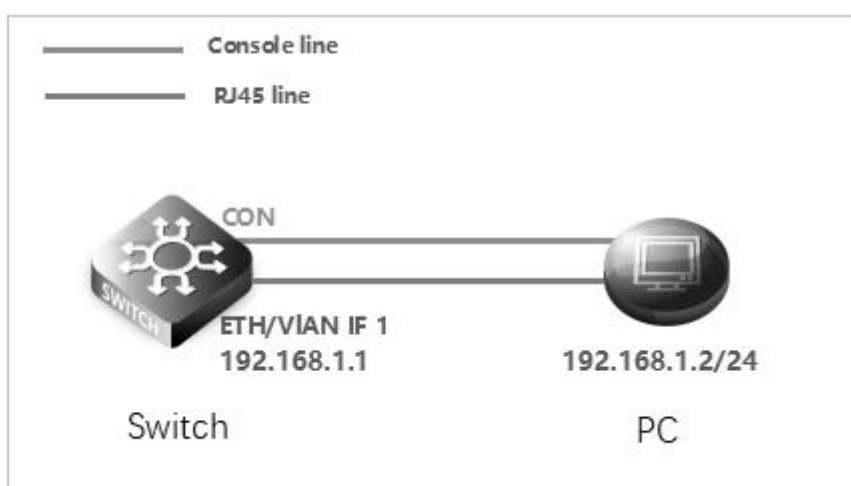
<b>1. Configuration Considerations</b> .....	<b>1</b>
<b>2. Network Topology</b> .....	<b>1</b>
<b>3. Operation Steps</b> .....	<b>1</b>
3.1 Connection Equipment.....	1
3.2 Download Configuration Software.....	1
3.3 Switch on and Use Login Software.....	1
3.4 Restoration System.....	2
3.5 Switch to Factory Reset.....	3

## 1. Configuration Considerations

Table 1 products and versions for example

Series	Product	Support version
POE series	S3150-8T2FP	
	S3260-8T2FP	
	S3260-16T4FP	
	S3400-24T4FP	
	S3400-48T4SP	
	S5500-48T8SP	

## 2. Network Topology



## 3. Operation Steps

### 3.1 Connection Equipment

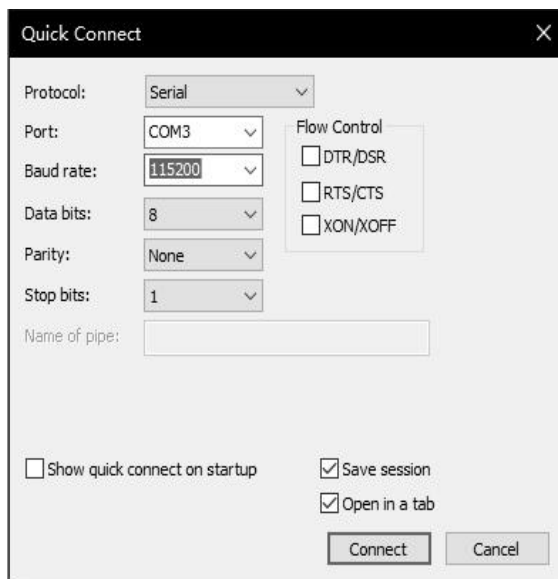
#According to the way of networking topo to connect PC and switch to network cable and Console. One end of the RJ-45 network cable is connected to the PC NIC, and the other end is connected to the SW's network port. Connect one end of Console line USB to PC's USB interface, and the other end of RJ-45 is connected to console interface of front panel of switch.

### 3.2 Download Configuration Software

#After the connection is completed, there we recommend the super terminal, putty or Secure CRT tool to configure the switch.

### 3.3 Switch on and Use Login Software

#Energizing the switch, then open the installed login software, select the serial port of login mode, port through the device manager to determine. Baud rate :115200, Data bits: 8, Parity: None, Stop bits: 1. (Reference below)



NOTE: COM Number can be viewed through device manager. (right click on my computer.>manage>device manager>port (COM and LPT )  
If it displays an unrecognized USB device, please download and install the corresponding driver.

### 3.4 Restoration System

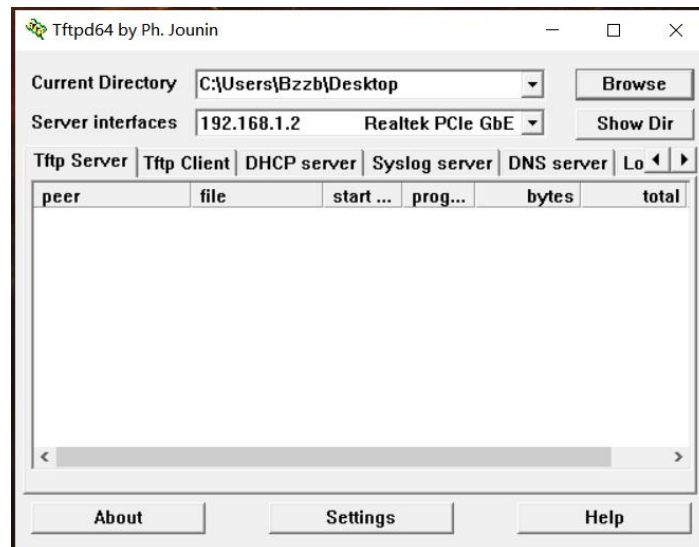
\*Please use Ctrl + P to enter the monitor # interface when restarting the switch, then configure the switch IP address.

monitor#ip address 192.168.1.1 255.255.255.0

\*Set PC IP address



\*Then prepare tftp



```
* Then start upgrading the system: run copy tftp flash
Monitor#copy tftp flash //From ftp to flash
Source file name[ ]? FS-S1400-24T4F-2.2.0C.bin //Firmware file name
Remote-server ip address[ ]? 192.168.1.2 //TFTP Server IP address
Destination file name[FS-S1400-24T4F-2.2.0C.bin]? //Switch.bin
When prompted: TFTP: successfulfully sent ...
After the success # reboot just fine
```

### 3.5 Switch to Factory Reset

```
Switch#delete startup-config
this file will be erased, are you sure? (y/n)y
Switch#reboot
```

If the file name is not entered, the startup-config files will be deleted by default