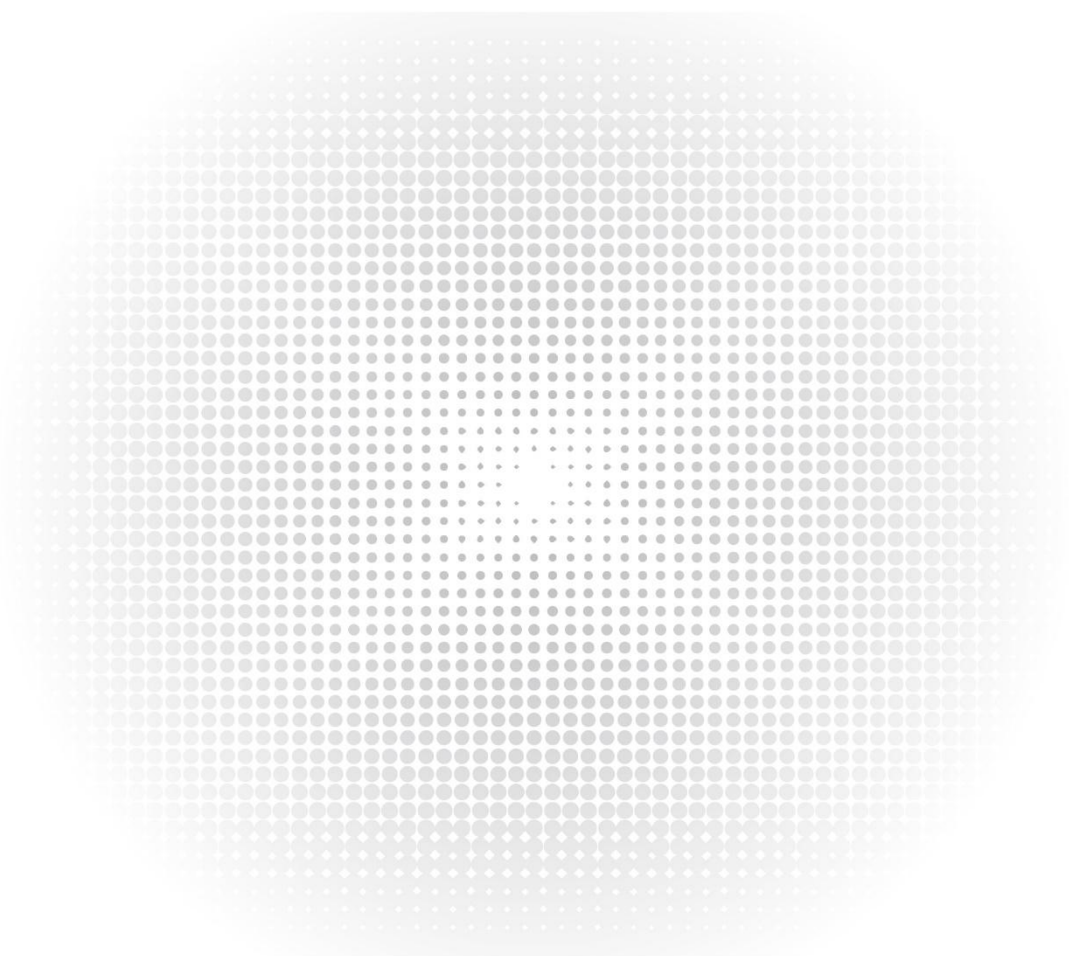


Network Cameras

User Manual





CAUTION!




- The default password is intended for your first login. For security, please set a strong password after your first login. A strong password shall include at least nine characters comprising digits, letters, and special characters.Strong: contains at least 9 characters comprising all three elements: letter, special character, digit.Weak: contains at least 8 characters from two of the four types: upper-case letter, lower-case letter, special character, digit.
- Video and audio surveillance can be regulated by laws that vary from country to country. Check the law in your local region before using this product for surveillance purposes. We shall not be held responsible for any consequences resulting from illegal operations of the device.

Environmental Protection

This product has been designed to comply with the requirements on environmental protection. For the proper storage, use and disposal of this product, national laws and regulations must be observed.

Symbols

The symbols in the following table may be found in this manual. Carefully follow the instructions indicated by the symbols to avoid hazardous situations and use the product properly.

Symbol	Description
 WARNING!	Contains important safety instructions and indicates situations that could cause bodily injury.
 CAUTION!	Means reader be careful and improper operations may cause damage or malfunction to product.
 NOTE!	Means useful or supplemental information about the use of product.

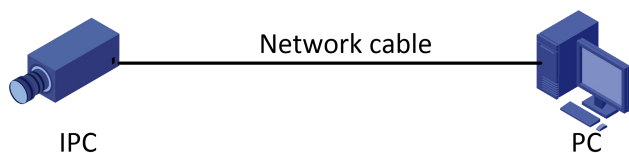
Contents

1. Network Connection.....	5
2. Login.....	5
2.1. Preparation.....	5
2.2. Logging In to the Web Interface.....	8
2.3. Introduction to the Web Interface.....	8
2.4. Initial Configuration.....	9
3. Configuring Parameters.....	10
3.1. Local Parameters.....	10
3.2. Network Configuration.....	11
3.2.1. Ethernet.....	11
3.2.2. Port.....	13
3.2.3. FTP.....	13
3.2.4. E-Mail.....	15
3.2.5. Port Mapping.....	16
3.2.6. DNS.....	17
3.2.7. DDNS.....	17
3.2.8. P2P.....	17
3.2.9. SNMP.....	18
3.2.10. 802.1x.....	18
3.2.11. QoS.....	19
3.3. Image Configuration.....	19
3.3.1. Image Adjustment.....	19
3.3.2. OSD Setting.....	27
3.3.3. Privacy Mask.....	29
3.4. Audio and Video Configuration.....	30
3.4.1. Video Configuration.....	30
3.4.2. Audio Configuration.....	31
3.4.3. Snapshot.....	32
3.4.4. ROI.....	33
3.4.5. Media Stream Configuration.....	34
3.5. Intelligent Alarm Configuration.....	36
3.5.1. Smart.....	36
3.5.2. Cross Line Detection.....	36
3.5.3. Enter Area.....	37
3.5.4. Leave Area.....	38
3.5.5. Intrusion Detection.....	39
3.5.6. Advanced Settings.....	40
3.6. Common Alarm Configuration.....	41
3.6.1. Configuring Motion Detection Alarm.....	42
3.6.2. Configuring Tampering Alarm.....	43
3.6.3. Configuring Audio Detection Alarm.....	44
3.6.4. Configuring Alarm Input.....	46
3.6.5. Configuring Alarm Output.....	47

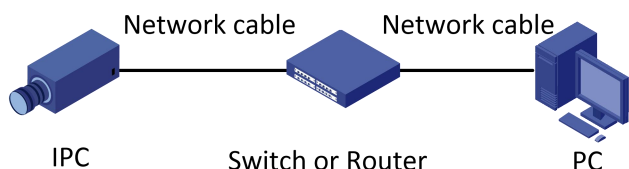
3.7. Memory Card Storage.....	48
3.7.1. Setting Edge Storage.....	48
3.7.2. Setting Cache Post Recording.....	50
3.8. System Maintenance.....	51
3.8.1. Security.....	51
3.8.2. Setting the System Time.....	53
3.8.3. Setting Servers.....	54
3.8.4. Viewing Device Status.....	55
3.8.5. Photo Storage Status.....	55
3.8.6. Upgrading the Device.....	56
3.8.7. Restarting the System.....	57
3.8.8. Importing and Exporting System Configuration File.....	57
3.8.9. Collecting Diagnosis Information.....	57
4. Live View.....	57
4.1. Live View Toolbar.....	58
4.2. Viewing Certain Area of Images.....	59
4.2.1. Using Digital Zoom.....	59
4.2.2. Using Area Focus.....	60
5. Video Playback and Download with Edge Storage.....	61
5.1. Video Playback.....	61
5.2. Download.....	61
6. Appendix A Glossary.....	62
7. Appendix B FAQ.....	62

1. Network Connection

Before accessing a network camera (also known as IP Camera or IPC) from a PC, you need to connect the network camera to the PC directly with a network cable or via a switch or router.



Use a Shielded Twisted Pair (STP) cable to connect the network interfaces of the network camera and the PC.



Use Shielded Twisted Pair (STP) cables to connect the network interfaces of the camera and the switch or router.

2. Login

2.1. Preparation

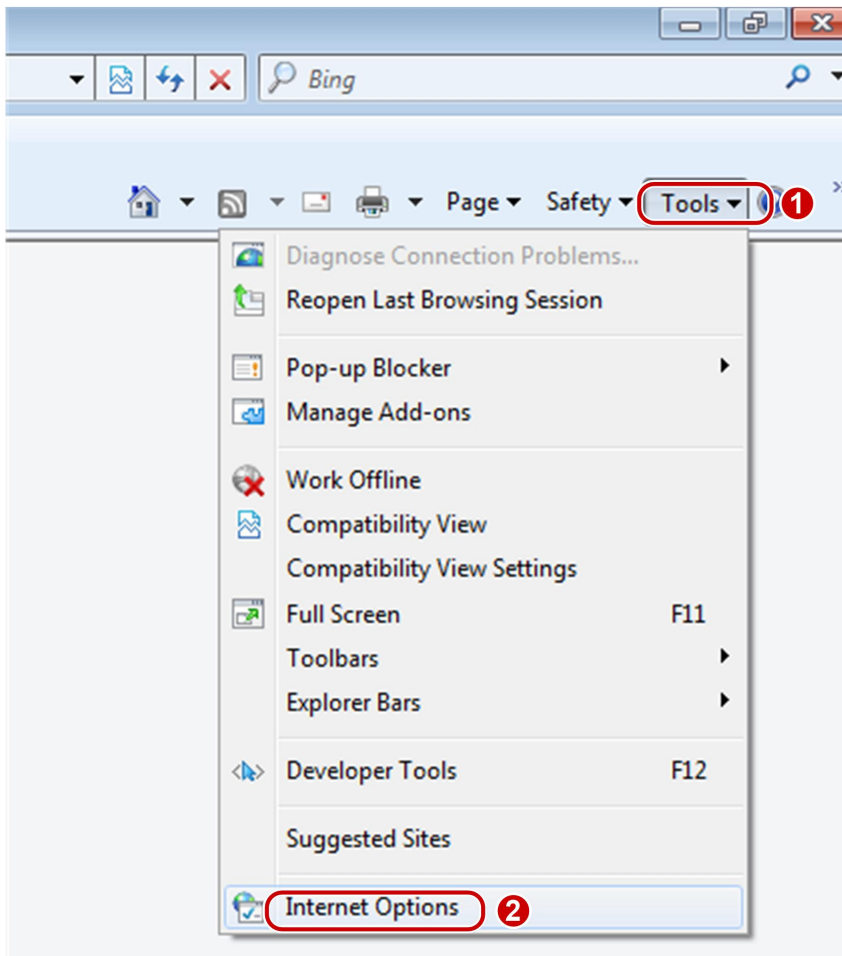
After you have completed the installation in accordance with the quick guide, connect the camera to power to start it. After the camera is started, you can access the camera from a PC client installed with a web browser or the client software Software monitoring platform. Internet Explorer(IE) is a recommended web browser. For more information about Software monitoring platform, refer to the *Software monitoring platform User Manual*.

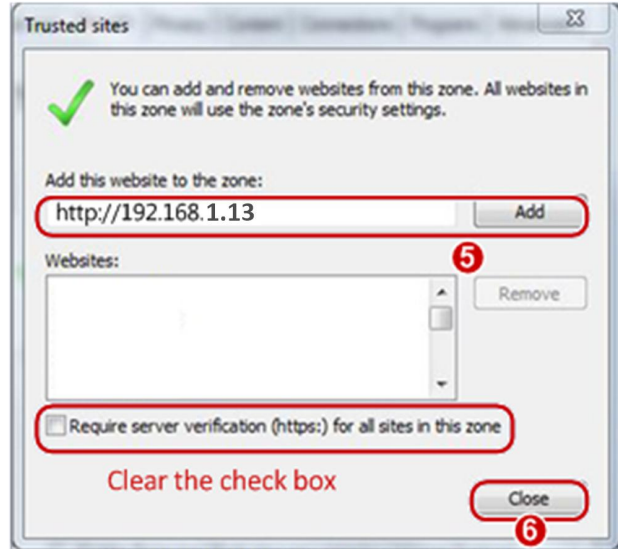
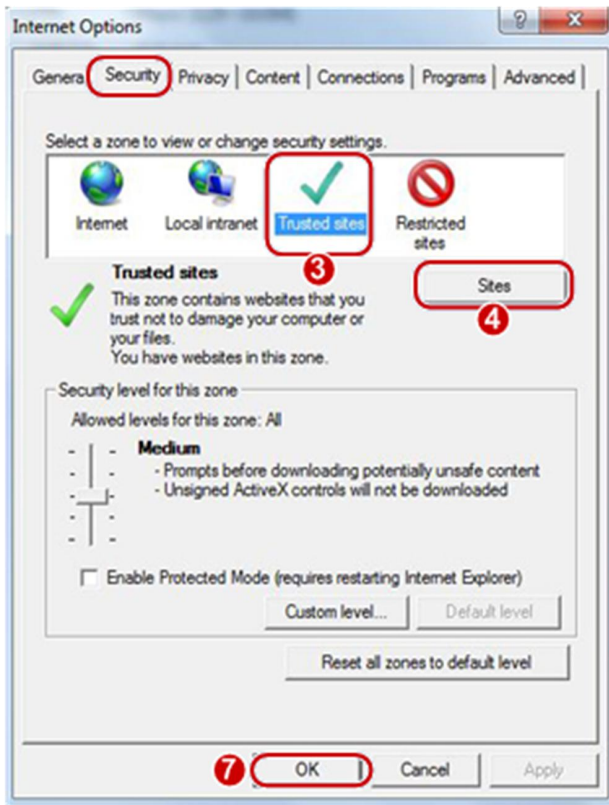
The following takes IE on a Microsoft Windows7 operating system as an example.

Check before login

- The camera is operating correctly.
- The network connection between the PC and the camera is normal.
- The PC is installed with Internet Explorer 10.0 or higher.
- (Optional) The resolution is set to 1440 x 900.

Add the IP address as a trusted site



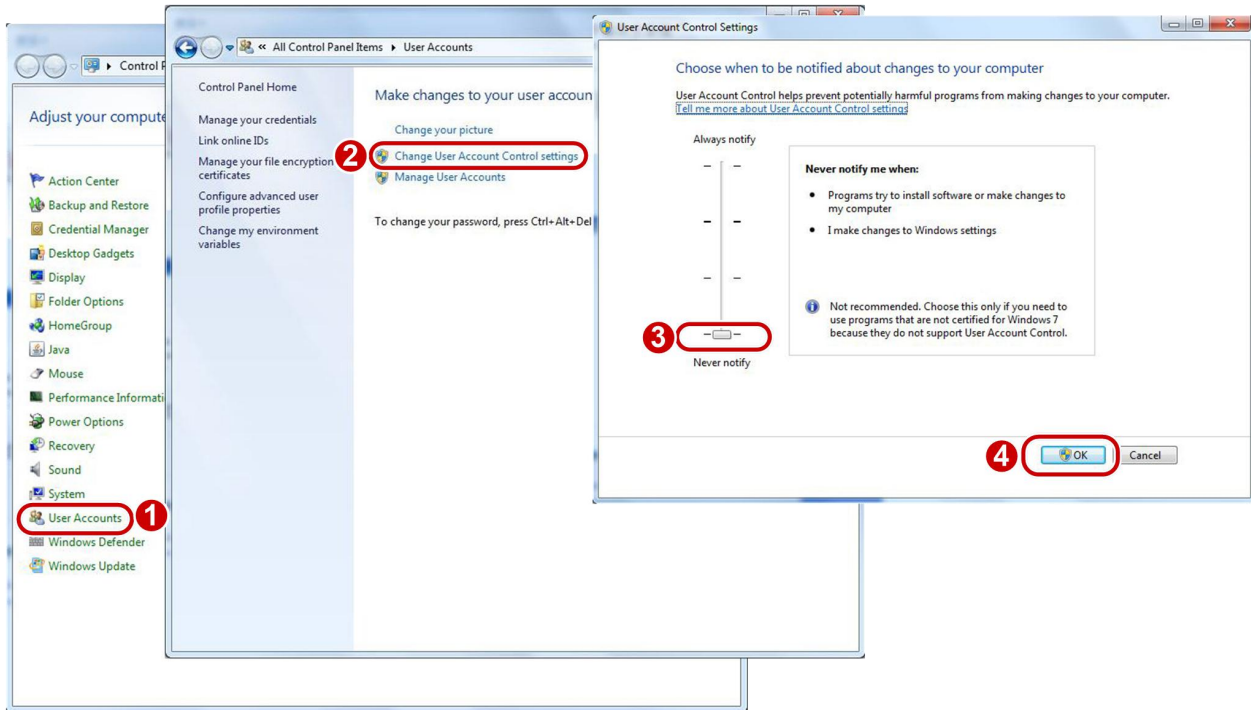


NOTE!

The IP address 192.168.1.13 in this example is the default IP address. Please replace it with the actual address of your camera if it has been changed.

(Optional) Modify user access control settings

Before you access the camera, follow the steps to set **User Account Control Settings** to **Never notify**.



2.2. Logging In to the Web Interface

The default static IP address of the camera is 192.168.1.13, and the default subnet mask is 255.255.255.0.

DHCP is turned on by default. If a DHCP server is used in the network, the IP address of your camera may be assigned dynamically, and you need to use the correct IP address to log in. Use the Software monitoring platform client to view the dynamic IP address of your camera. The following takes IE as an example to describe the login procedure.

1. Browse to the login page by entering the correct IP address of your camera in the address bar.



2. If you log in for the first time, follow system prompts and install the ActiveX. You need to close your browser to complete the installation.



NOTE!

- To manually load the ActiveX, type `http://IP address/ActiveX/Setup.exe` in the address bar and press Enter.
- The default password is intended for your first login. For security, please set a strong password after your first login. A strong password shall include at least nine characters comprising digits, letters, and special characters.
- The camera protects itself from illegal access by limiting the number of failed login attempts. If login fails six times consecutively, the camera locks automatically for ten minutes.

3. Privacy policy is displayed on the screen when the user logs in for the first time. After reading the privacy policy, you need to check in the 'I have read and agree to the above policy' box, then click the 'OK' button to proceed to the next step.

4. Enter the username and password, and then click **Login**. For the first login, use the default username "admin" and password "admin".

● If you log in with Save Password selected, you do not need to enter the password each time when you log in. To ensure security, you are not advised to select Save Password.

● To clear the Username and Password text boxes and the Save Password checkbox, click Reset.

2.3. Introduction to the Web Interface

By default the live view window is displayed when you are logged in to the Web interface. The following shows an example.



No.	Description
1	Menu
2	Zoom control area Note: This area is available for some cameras .For the operations that your camera supports, see the Web interface.
3	Live view window
4	Live view toolbar

2.4.Initial Configuration

After you log in to the device, please perform the following initial configuration.

Item	Description
1.Ethernet.	Reconfigure the device IP and network parameters based on the actual networking.
2.Log out and log in again to the Web using the new IP address.	-
3.Set the system time.	Set the system time based on the actual situation.
4.(Optional) Set the management server.	Set the management server based on the actual networking.
5.(Optional) Set the server for storing photos.	Set the server for storing photos based on the actual networking.
6.Set OSD.	Set the information displayed on the screen as needed, for example, time.
7.(Optional) Manage users.	Change the default password and add common users as needed.

You can watch the live video after finishing the initial configuration. Please configure other parameters as needed.



NOTE!

- The displayed live view interface, parameters displayed and value ranges may vary with models. Please see the actual Web interface for details.
- The parameters that are grayed out cannot be modified. For the actual settings, see the Web interface.
- It is recommended that you change the password when you are logged in the first time. For details about how to change a password, see Security.

3. Configuring Parameters

3.1. Local Parameters

Set local parameters for your PC.



NOTE!

The local parameters may vary with models. Please see the actual Web interface for details.

1. Select **Setup>Common>Local Parameters**

Smart	
Intelligent Mark	Enable <input type="button" value="v"/>
Untriggered Target	Enable <input type="button" value="v"/>
Display Attributes	Enable <input type="button" value="v"/>
Video	
Processing Mode	Fluency Priority <input type="button" value="v"/>
Protocol	TCP <input type="button" value="v"/>
Audio	
Encoding Format	G.711U <input type="button" value="v"/>
Recording and Snapshot	
Recording	Subsection By Time <input type="button" value="v"/>
Subsection Time (min)	30 <input type="text"/>
When Storage Full	<input checked="" type="radio"/> Overwrite Recording <input type="radio"/> Stop Recording
Total Capacity(GB)	10 <input type="text"/>
Local Recording	TS <input type="button" value="v"/>
Files Folder	C:\Users\jW8008\Surveillance_IPC\IPC\ <input type="button" value="Browse..."/> <input type="button" value="Open"/>
<input type="button" value="Save"/>	

Parameter	Description
-----------	-------------

Smart	Untriggered Target	When enabled, the camera will display an on-screen mark on the target (e.g., face when face detection is enabled) and track it.
	Intelligent Mark	This function should be used with “Cross Line Detection、Enter Area、Leave Area、Intrusion Detection”
	Display Attributes	When enabled, the attributes collected will be displayed in live view page. This function should be used with Intelligent > Smart > Attribute Collection.
Video	Processing Mode	<ul style="list-style-type: none"> ●Real-Time Priority: Recommended if the network is in good condition. ●Fluency Priority: Recommended if you want short time lag for live video. ●Ultra-Low Delay: Recommended if you want the minimum time lag for live video.
	Protocol	<ul style="list-style-type: none"> ●Set the protocol used to transmit media streams to be decoded by the PC.
Record and Snapshot	Recording	<ul style="list-style-type: none"> ●Subsection By Time: Duration of recorded video for each recording file on the computer. For example, 2 minutes. ●Subsection By Size: Size of each recording file stored on the computer. For example, 5M.
	Record Overwrite	<ul style="list-style-type: none"> ●Overwrite: When the assigned storage space on the computer is used up, the camera deletes the existing recording files to make room for the new recording file. ●Full Stop: When the assigned storage space on the computer is full, recording stops automatically.
	Files Folder	<ul style="list-style-type: none"> ●The save path of snapshots and recordings. The max. path length is 260 bytes. If the limit is exceeded, recording or snapshot during live view will fail, and messages will appear on the screen.

2.Modify the settings as required. The following table describes some major parameters.

3.Click **Save**.

3.2.Network Configuration

3.2.1.Ethernet

Modify communication settings such as the IP address for the camera so that the camera can communicate with other devices.



NOTE!

- After you have changed the IP address, you need to use the new IP address to log in.
- The configurations of DNS (Domain Name System) server are applicable when the device is accessed by domain name.

Static Address

1.Click **Setup>Network>Network**.

Obtain IP Address	Static
IP Address	203.3.1.99
Subnet Mask	255.255.255.0
Default Gateway	203.3.1.1
IPv6	
IPv6 Mode	Manual
IPv6 Address	
Prefix Length	64
Default Gateway	
MTU	1500
Port Type	FE Port
Operating Mode	Auto-negotiation

2.Select **Static** from the **Obtain IP Address** drop-down list.

3. Enter the IP address, subnet mask, and default gateway address. Make sure that the IP address of the camera is unique in the network.
4. Click **Save**.

PPPoE



NOTE!

This function is not supported by some models. Please see the actual model for details.

If the camera is connected to the network through Point to Point over Ethernet (PPPoE), you need to select PPPoE as the IP obtainment mode.

1. Click **Setup>Network>Network**.

2. Select **PPPoE** from the **Obtain IP Address** drop-down list.
3. Enter the username and password provided by your internet Service Provider (ISP).
4. Click **Save**.

DHCP

The Dynamic Host Configuration Protocol (DHCP) is enabled by default when the camera is delivered. If a DHCP server is deployed in the network, the camera can automatically obtain an IP address from the DHCP server.

To manually configure DHCP, follow the steps below:

1. Click **Setup>Network>Network**.

2. Select **DHCP** from the **Obtain IP Address** drop-down list.
3. Click **Save**.

IPv6

1. Click **Setup>Network>Network**.

IPv6	
IPv6 Mode	Manual
IPv6 Address	<input type="text"/>
Prefix Length	64
Default Gateway	<input type="text"/>

2. By default the IPv6 mode is set to **Manual**.

3. Enter the IPv6 address, set the prefix length and default gateway. The IP address must be unique on the network.

4. Click **Save**.

3.2.2.Port



NOTE!

This function is not supported by some models. Please see the actual model for details.

1. Click **Setup>Network>Port**.

HTTP Port	80
HTTPS Port	443
RTSP Port	554

Note: Modifying the RTSP or server port number will cause the device to restart.

2. Configure relevant port numbers.

3. Click **Save**.

3.2.3.FTP

All snapshots (except face detection) are saved through the general FTP service. After the configuration of FTP, you will be able to upload snapshots from network cameras to the specified FTP server.

General

1. Click **Setup>Storage>FTP**. Go to **General** tab.

Server Parameters

Server IP	<input type="text" value="192.168.0.150"/>	Upload Images	<input type="checkbox"/>
Port No.	<input type="text" value="21"/>	Overwrite Storage	<input type="checkbox"/>
Username	<input type="text"/>	Overwrite At(image)	<input type="text" value="1000"/>
Password	<input type="password"/>	<input type="button" value="Test"/>	

Snapshot Image

Save To\\ Photo\ [IP Address]\ [Date]\ [Hour(s)]

Root Directory

\ Photo \ \ \

File Name[Photo No.]-[IP Address]-[Time].jpg

Separator

No.	Naming Element
1	<input type="text" value="Photo No."/> ▾
2	<input type="text" value="IP Address"/> ▾
3	<input type="text" value="Time"/> ▾
4	<input type="text" value="None"/> ▾
5	<input type="text"/>

Note:Overwrite will take place in the current directory.

- 2.Set the IP address and port for the FTP server, username and password used to upload images to the FTP server, select **Upload Images**, **Overwrite Storage** and set **Overwrite At** (threshold for overwriting images).Some camera models support FTP test. You may test FTP after completing FTP settings correctly.
- 3.Set the path for saving snapshots on the FTP server and the file name format. For example, set path as Photo\\IP Address\\Date\\Hour(s), and set file name as Photo No.-IP Address Time.jpg.
- 4.Click **Save**.

Smart

This function is used to store snapshots taken for smart functions such as face recognition.To use smart FTP, click Setup > System > Server > Intelligent Server and set Platform Communication Type to FTP.

- 1.Click **Setup>Storage>FTP**. Go to **Smart** tab.

Server Parameters

Server IP	<input type="text" value="192.168.0.150"/>	Direction ID	<input type="text" value="1"/>
Port No.	<input type="text" value="21"/>	Not Upload Pictures	<input type="checkbox"/>
Username	<input type="text"/>	Custom Naming Rules	<input type="checkbox"/>
Password	<input type="password" value="....."/>	Convert Path into UTF8 Format	<input type="checkbox"/>

Snapshot Image

Save To \\ Photo\ [IP Address]\ [IP Address]\ [Time-Hour]

Root Directory

\ \ \ \ \ \ \

File Name [Photo No.]-[Date]-[Time].jpg

Separator

No.	Naming Element	Naming Rule
1	<input type="text" value="Photo No."/>	<input type="text" value="Photo No."/>
2	<input type="text" value="Date"/>	<input type="text" value="Date"/>
3	<input type="text" value="Time"/>	<input type="text" value="Time"/>
4	<input type="text" value="None"/>	<input type="text" value="None"/>
5	<input type="text"/>	<input type="text"/>

2. Set the IP address and port of the FTP server, username and password used to upload images to the FTP server.
3. Set the path for saving snapshots on the FTP server and the file name format. For example, set path as Photo\\IP Address\\Date, and set file name as Photo No.-Date Time.jpg.
4. Click **Save**.

3.2.4.E-Mail

After the configuration of E-mail, when alarms are triggered, you will be able to send messages to the specified E-mail address.

1. Click **Setup>Network>E-mail**.

Sender

Name

Address

SMTP Server

SMTP Port

TLS/SSL On Off

Snapshot Interval(s) Attach Image

Server Authentication On Off

Username

Password

Recipient

Name1

Address1

Name2

Address2

Name3

Address3

2. Configure relevant parameters of the sender and the recipient. Some camera models support Email test. You may test email after setting the recipient address. The following table describes some major parameters.

Parameter	Description
TLS/SSL	When enabled, the e-mail will be encrypted using TLS (Transport Layer Security) or Secure Socket Layer (SSL) to protect privacy. First it tries to send through an SSL connection. If the SMTP server supports SSL, the e-mail will be sent through the SSL connection; otherwise, it tries to send using STARTTLS.
Attach Image	When enabled, the e-mail will contain 3 instant snapshots as attachment according to the Capture Interval.
Username/Password	Username and password of the registration email address. The password allows the following special characters \ / : * ? ' " < > % &

3. Click Save.

3.2.5. Port Mapping

1. Click Setup > Network > Port. Go to Port Mapping tab.

Port Mapping On Off

Mapping Type

Port Type	External Port	External IP Address	Status
HTTP Port	<input type="text" value="80"/>	0.0.0.0	Inactive
RTSP Port	<input type="text" value="554"/>	0.0.0.0	Inactive
Server Port	<input type="text" value="81"/>	0.0.0.0	Inactive

2.Enable **Port Mapping** and select mapping type. If **Manual** is selected, then external ports must be configured (external IP is obtained automatically by the camera). If the configured port is occupied, then the **Status** will show Inactive.

3.Click **Save**.

3.2.6.DNS

1.Click **Setup>Network>DNS**.

Preferred DNS Server	<input type="text" value="8.8.8.8"/>
Alternate DNS Server	<input type="text" value="8.8.4.4"/>

2.Set DNS server addresses.

3.Click **Save**.

3.2.7.DDNS



NOTE!

This function is not supported by some models. Please see the actual model for details.

1.Click **Setup>Network>DDNS**.

DDNS Service	<input checked="" type="radio"/> On <input type="radio"/> Off
DDNS Type	<div style="border: 1px solid black; padding: 2px;"> DynDNS NO-IP EZDDNS </div>
Server Address	<input type="text"/>
Domain Name	<input type="text"/>
Username	<input type="text"/>
Password	<input type="text"/>
Confirm	<input type="text"/>

2.Enable **DDNS Service**.

3.Select a DDNS type: DynDNS, NO-IP, or EZDDNS.

4.Complete other settings including server address, domain name, username and password.

5.Click **Save**.

3.2.8.P2P



NOTE!

- This function is not available to all models.
- Scan the QR code with your mobile phone (iOS or Android) to download the APP.
- When installed, run the APP to add the camera. Please refer to the online help in the APP for detailed steps.

1.Click **Setup>Network>P2P**.

P2P	
P2P	<input checked="" type="radio"/> On <input type="radio"/> Off
Add Without Signup	<input checked="" type="radio"/> On <input type="radio"/> Off
Address	www.star4live.com
Register Code	1234567890123456789012345
Device Status	Offline
Scan	

2. Select **On** to enable cloud service.
3. Click **Save**.

3.2.9.SNMP

SNMPv3 is recommended when a camera needs to transfer configuration with the central server. Both the camera and the central server should support SNMPv3.



NOTE!

- Two options are available: SNMPv3 (default) and SNMPv2.
- If you choose SNMPv2, an onscreen message will remind you of potential risks and ask if you want to continue.

1. Click Setup> Network > SNMP

2. Select SNMPv3 and complete settings.
3. Click **Save**.

On the SNMPv2 setting page, **Read-Only Community Name** is used for two-way authentication between a camera and the central server. The default name is **public**, and you may change it as needed. If you change the **Read-Only Community Name**, you should change it into the same one on the central server, or the two-way authentication will not be completed.

3.2.10.802.1x

802.1x provides authentication to devices (e.g., cameras) trying to connect to a network. Only the authenticated devices can connect the network. This enhances security.

1. Click **Setup>Network>802.1x**.

802.1x	<input checked="" type="radio"/> On <input type="radio"/> Off
Protocol	EAP-MD5
EAPOL Version	1
Username	<input type="text"/>
Password	<input type="text"/>
Confirm	<input type="text"/>

2. Select **On** and then complete other settings.

3. Click **Save**.

3.2.11.QoS

QoS(Quality of Service) is the ability to provide better service for specified network communication. As a network security mechanism, QoS is used to address problems like network delay and blocking. When the network is overloaded or congested, QoS ensures that critical services are not delayed or discarded and that the network runs efficiently.

1. Click **Setup > Network > QoS**.

Audio & Video	<input type="text" value="46"/>
Alarm Report	<input type="text" value="0"/>
Configuration Manage...	<input type="text" value="0"/>
FTP	<input type="text" value="4"/>
<input type="button" value="Save"/>	

2. Set a priority level (0~63) for each service. At present, QoS allows you to assign different priority to audio and video, alarm report, configuration management and FTP transmission. The greater the value, the higher the priority. For example, if the value of audio and video is set to 60, alarm report and configuration management is set to 0, and FTP is set to 4, when network congestion occurs, the priority is to ensure the smooth running of audio and video.

3. Click **Save**.

	Note: To use QoS, make sure that the switch support QoS mode.
--	---

3.3.Image Configuration

3.3.1.Image Adjustment



NOTE!

- The image parameters displayed and value ranges allowed may vary with camera model. For the actual parameters and value ranges of your camera, see the Web interface. You may move the sliders to adjust settings or enter values in the text boxes directly.
- Clicking **Default** will restore all the default image settings.

Setting the Scene

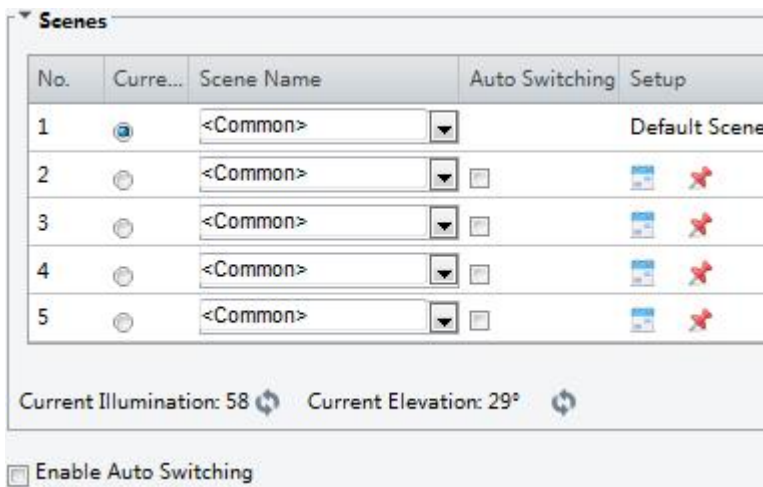
Set image parameters to achieve the desired image effects based on live video in different scenes.

Click **Setup>Image>Image**.

The scene management page for some models is displayed as follows, you can select the desired scene in the drop-down list.



The scene management page of some models is displayed as follows, you can take the following steps to configure the scene.



1. Click **Scenes**.
2. Select a scene, and then set scene switching parameters. The following table describes some major parameters.

Column	Description
Current	<p>Indicates the scene that is being used.</p> <p>Note:</p> <ul style="list-style-type: none"> ● Select an option button to switch to the scene and display the corresponding image parameters for the scene. ● The camera switches the current scene automatically when Enable Auto Switching is selected.
Scene Name	<p>Name of the current scene. The device provides several preset scene modes. When you select a scene, the corresponding image parameters are displayed. You can adjust image settings according to actual needs.</p> <ul style="list-style-type: none"> ● Common: recommended for outdoor scenes. ● Indoor: recommended for indoor scenes. ● High Sensitivity: recommended for low light environment. ● Highlight Compensation: can suppress strong light such as headlights on roads and spotlight in parks. Recommended for capturing vehicle license plates. ● WDR: recommended for scenes with high-contrast lighting, such as window, corridor, front door or other scenes that are bright outside but dim inside. ● Custom: set a scene name as needed. ● Face: Capture faces in motion in complicated scenes.
Auto Switching	<p>Indicates whether to add a scene to the auto-switching list.</p> <p>Note:</p> <p>If Auto Switching is selected, the system switches to a scene automatically when the condition for switching to the scene is met. By default the auto-switching list includes the default scene.</p>
Setup	<p>Click to set conditions for auto-switching, including schedule, illumination, and current elevation (angle between the PTZ and the horizontal direction). It means that auto-switching is triggered only when illumination and the current elevation during the set time period meet the set conditions. A condition is invalid if both the start and end values are set to 0.</p>

3. Select a scene and then click to set it as the default scene.
4. If auto-switching is enabled, the camera can switch to the scene automatically when the condition for switching to a non-default scene is met. Otherwise, the camera remains in the default scene. When auto-switching is not enabled, the camera remains in the current scene.



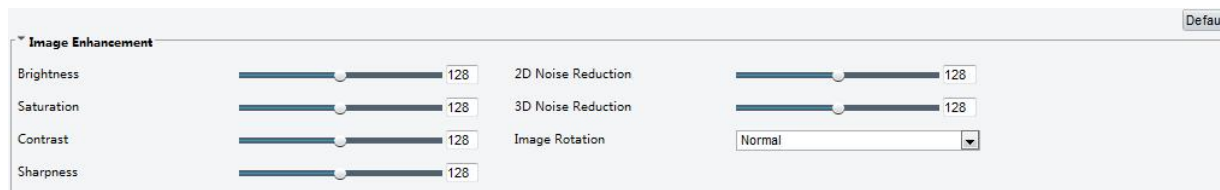
- NOTE!**
- If Auto Switching is enabled (scene settings will be unavailable), the device will switch between the set scenes. If not, the device will stay at the current scene. The device will stay at default scenes unless the non-default scenes are triggered.
 - If multiple non-default scenes are triggered, then the device will switch to the scene with the minimum number (starts from 1 to 5).

Image Enhancement














- NOTE!**
- This function may vary with models. Please see actual Web interface for details.

1. Click **Setup>Image>Image** and then click **Image Enhancement**.



2. Use the sliders to change the settings. You may also enter values directly. The following table describes some major parameters.

Item	Description
Brightness	Set the degree of brightness of images. 
Saturation	The amount of a hue contained in a color. 
Contrast	Set the degree of difference between the blackest pixel and the whitest pixel. 
Sharpness	Contrast of boundaries of objects in an image.

Item	Description
	<div style="display: flex; justify-content: space-around; align-items: center;">   </div> <div style="display: flex; justify-content: space-around; margin-top: 5px;"> Low sharpness High sharpness </div>
2D Noise Reduction	Reduce the noise of images. The function may cause image blurring.
3D Noise Reduction	Reduce the noise of images. The function may cause motion blur (or ghosting in some applications).
Image Rotation	<p data-bbox="341 685 555 707">Rotation of the image.</p> <div style="display: grid; grid-template-columns: 1fr 1fr; gap: 10px;"> <div data-bbox="360 719 770 1010">  <p data-bbox="528 1014 600 1037">Normal</p> </div> <div data-bbox="804 719 1230 1010">  <p data-bbox="959 1014 1078 1037">Flip Vertical</p> </div> <div data-bbox="360 1037 770 1294">  <p data-bbox="496 1299 639 1321">Flip Horizontal</p> </div> <div data-bbox="804 1037 1230 1294">  <p data-bbox="991 1299 1038 1321">180°</p> </div> <div data-bbox="440 1321 708 1742">  <p data-bbox="512 1744 639 1767">90° Clockwise</p> </div> <div data-bbox="911 1321 1179 1742">  <p data-bbox="959 1744 1126 1767">90° Anti-clockwise</p> </div> </div>

3.To restore default settings in this area, click **Default**.

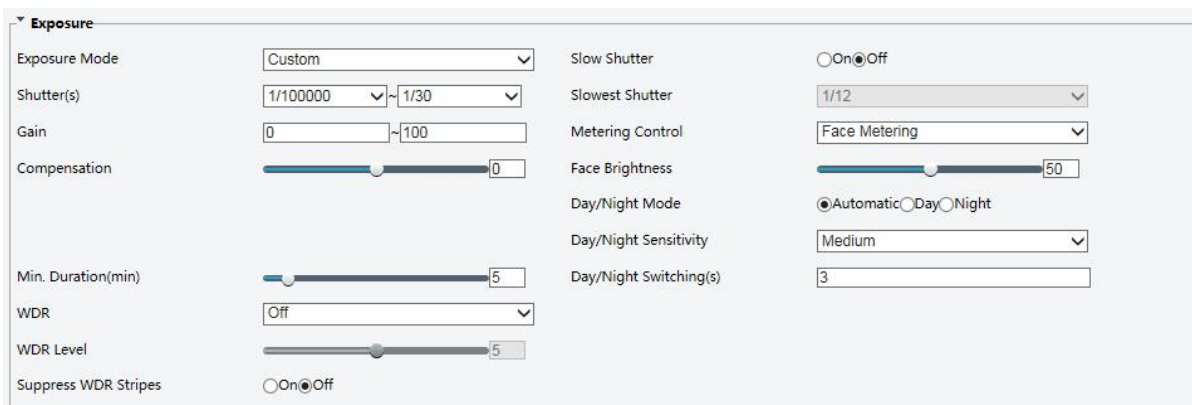
Exposure



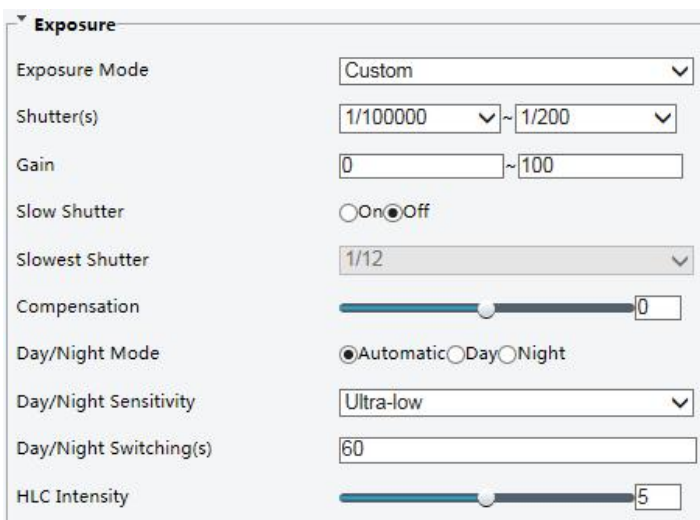
NOTE!

- This function may vary with models. Please see actual Web interface for details.
- The default settings are scene-adaptive. Use default settings unless modification is necessary.

1. Click **Setup>Image>Image** and then click **Exposure**.



For some camera models, the page is displayed as follows.



2. Set the parameters as required. The following table describes some major parameters.

Parameter	Description
Exposure Mode	<p>Select the correct exposure mode to achieve the desired exposure effect.</p> <ul style="list-style-type: none"> ●Automatic: The camera automatically adjusts exposure according to the environment. ●Custom: The user sets exposure as needed. ●Indoor 50Hz: Reduce stripes by limiting shutter frequency. ●Indoor 60Hz: Reduce stripes by limiting shutter frequency. ●Manual: Finetune image quality by setting shutter, gain and iris manually. ●Low Motion Blur: Control the minimum shutter to reduce motion blur in faces captured in motion.
Shutter (s)	<p>Shutter is used to control the light that comes into the lens. A fast shutter speed is ideal for scenes in quick motion. A slow shutter speed is ideal for scenes that change slowly.</p> <p>Note:</p> <ul style="list-style-type: none"> ●You can set a shutter speed when Exposure Mode is set to Manual or Shutter Priority. ●if Slow Shutter is set to Off, the reciprocal of the shutter speed must be greater than the frame rate.
Gain (dB)	<p>Control image signals so that the camera outputs standard video signals according to the light condition.</p> <p>Note:</p> <p>You can set this parameter only when Exposure Mode is set to Manual or Gain Priority.</p>
Slow Shutter	<p>Improves image brightness in low light conditions.</p> <p>Note:</p> <p>You can set this parameter only when Exposure Mode is not set to Shutter Priority and when Image Stabilizer is disabled.</p>

Parameter	Description
Slowest Shutter	Set the slowest shutter speed that the camera can use during exposure. Note: You can set this parameter only when Slow Shutter is set to On .
Compensation	Adjust the compensation value as required to achieve the desired effects. Note: You can set this parameter only when Exposure Mode is not set to Manual.
Metering Control	Set the way the camera measures the intensity of light. <ul style="list-style-type: none"> ●Center-Weighted Average Metering: Measure light mainly in the central part of images. ●Evaluative Metering: Measure light in the customized area of images. ●Highlight compensation: Ignore the brightness of the overexposed area of images. But selecting this setting will decrease the overall brightness of the image. ●Face Metering: Adjust image quality in poor lighting conditions by controlling the brightness of captured face in Face scene. Note: You can set this parameter only when Exposure Mode is not set to Manual.
Day/Night Mode	<ul style="list-style-type: none"> ●Automatic: The camera outputs the optimum images according to the light condition. In this mode, the camera can switch between night mode and day mode automatically. ●Night: The camera provides high-quality black and white images using the existing light ●Day: The camera provides high-quality color images using the existing light.
Day/Night Sensitivity	Light threshold for switching between day mode and night mode. A higher sensitivity means that the camera is more sensitive to the change of light and becomes more easily to switch between day mode and night mode. Note: You can set this parameter only when Day/Night Mode is set to Automatic.
Day/Night Switching(s)	Set the length of time before the camera switches between day mode and night mode after the conditions for switching are met. Note: You can set this parameter only when Day/Night Mode is set to Automatic.
WDR	Enable WDR to distinguish the bright and dark areas in the same image. Note: You can set this parameter only when Exposure Mode is neither Customize nor Manual and when Image Stabilizer is disabled.
WDR Level	After enabling the WDR function, you can improve the image by adjusting the WDR level. Note: Use level 7 or higher when there is a high contrast between the bright and dark areas of the scene. In the case of low contrast, it is recommended to disable WDR or use level 1-6.
Suppress Stripes	WDR When enabled, the camera can automatically adjust slow shutter frequency according to the frequency of light to minimize stripes that may appear in images.

3.To restore the default settings, click **Default**.

Smart Illumination



NOTE!

This function may vary with models. Please see actual Web interface for details.

1.Click **Setup>Image>Image** and then click **Smart Illumination**.

Smart Illumination

Smart Illumination	<input checked="" type="radio"/> On <input type="radio"/> Off	Control Mode	<input type="text" value="Manual"/>
Lighting Type	<input type="text" value="Infrared"/>	Near-illumination Level	<input type="text" value="0"/>
Mid-illumination Level	<input type="text" value="0"/>	Far-illumination Level	<input type="text" value="0"/>

2. Select the correct IR control mode and set the parameters. The following table describes some major parameters.

Parameter	Description
Lighting Type	<ul style="list-style-type: none"> ● Infrared: The camera uses infrared light illumination. ● White Light: The camera uses white light illumination. <p>Note: When Control Mode is set to Manual, camera can set illumination level from 0~1000.</p>
Control Mode	<ul style="list-style-type: none"> ● Global Mode: The camera adjusts IR illumination and exposure to achieve balanced image effects. Some areas might be overexposed if you select this option. This option is recommended if monitored range and image brightness are your first priority. ● Overexposure Restrain: The camera adjusts IR illumination and exposure to avoid regional overexposure. Some areas might be dark if you select this option. This option is recommended if clarity of the central part of the image and overexposure control are your first priority. ● Road: This mode offers strong illumination in whole and is recommended for monitoring wide-ranging scenes, for example, road. ● Park: This mode offers uniform light and is recommended for monitoring small range scenes with many obstacles, for example, industrial parks. ● Manual: This mode allows you to manually control the intensity of IR illumination. ● Indoor: This mode is recommended for application in indoor scenes.
Illumination Level	<p>Set the intensity level of the IR light. The greater the value, the higher the intensity. 0 means that the IR light is turned off.</p> <ul style="list-style-type: none"> ● Near-illumination Level: You are recommended to set this parameter first for a wide-angle scene. ● Far-illumination Level: You are recommended to set this parameter first if the scene requires a telephoto view. <p>Note: You can set this parameter only when Control Mode is set to Manual.</p>

3. To restore the default settings, click **Default**.

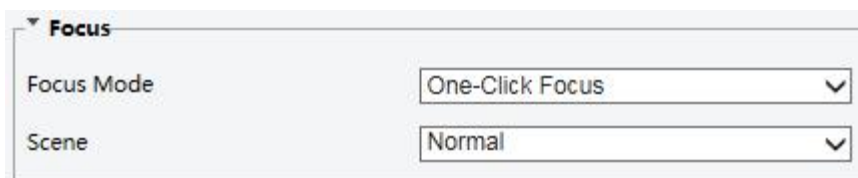
Focus



NOTE!

This function may vary with models. Please see actual models for details.

1. Click **Setup>Image>Image** and then click **Focus**.



2. Select the focus mode as required.

Parameter	Description
Focus Mode	<ul style="list-style-type: none"> ● Auto Focus: The camera focuses automatically according to the current light condition. ● Manual Focus: Manually adjust camera focus as required. ● One-Click Focus: The camera is triggered to focus once when rotating, zooming or going to a preset. ● One-Click Focus (IR): In a low light condition such as during night hours or in a dark house, this focus mode achieves better effects with the IR light turned on.
Scene	<ul style="list-style-type: none"> ● Normal: Used for common scenes, such as road and industrial park. ● Long Distance: Used for long-distance monitoring on a road. For example, when the camera is installed over 30 meters high to monitor a distant road intersection.

3. To restore the default settings, click **Default**.

White Balance

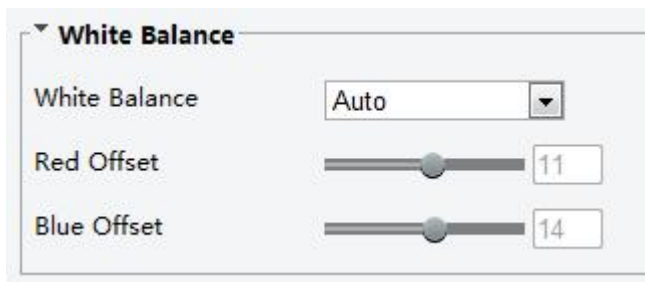
White balance is the process of offsetting unnatural color cast in images under different color temperatures so as to output images that best suit human eyes.



NOTE!

This function may vary with models. Please see the actual Web interface for details.

1. Click **Setup>Image>Image** and then click **White Balance**.



2. Select a white balance mode as required. The following table describes some major parameters.

Parameter	Description
White Balance	Adjust the red or blue offset of the image: <ul style="list-style-type: none"> ●Auto/Auto2: The camera adjusts the red and blue offset automatically according to the light condition (the color tends to be blue).If the images are still unnaturally red or blue in Auto mode, please try Auto2. ●Fine Tune: Allow you to adjust the red and blue offset manually. ●Outdoor: Suitable for outdoor environment with a relatively greater color temperature range. ●Locked: Lock the current color temperature without change. ●Sodium Lamp: The camera adjusts red and blue offset automatically according to the light condition (the color tends to be red).
Red Offset	Adjust the red offset manually. Note: You can set this parameter only when White Balance is set to Fine Tune .
Blue Offset	Adjust the blue offset manually. Note: You can set this parameter only when White Balance is set to Fine Tune .

3.To restore the default settings, click **Default**.

Advanced

Use the defog function to adjust the clarity of images captured in fog or haze conditions.

1.Click **Setup>Image>Image** and then click **Advanced**.



NOTE!

- You can set this parameter only when WDR is turned off.
- Only some camera models support optical defog.When Defog is set to On, defog intensity level 6-9 represent optical defog, and images change from color to black/white when defog intensity is set from level 5 to 6;if Defog is set to Auto and defog intensity level is somewhere between 6-9, images do not automatically change to black/white in light fog conditions; the camera automatically switches to optical defog only in heavy fog conditions.

2.Enable the defog function and then select a level for the scene. Level 9 achieves the maximum defog effects, and level 1 achieves the



Defog Off



Defog On

minimum.

3.To restore the default settings, click **Default**.

Lighting Type



NOTE!

This function may vary with models. Please see the actual model for details.

1.Click **Setup>Image>Image** and then click **Smart Illumination**



2.Select an option from the **Lighting Type** drop-down list.

3.To restore the default settings, click **Default**.

3.3.2.OSD Setting

On Screen Display (OSD) is the text displayed on the screen with video images and may include time and other customized contents.



NOTE!

This function may vary with models.Please see the actual Web interface for details.

1.Click **Setup>Image>OSD**.

Enable	No.	Overlay OSD Content	X-Axis	Y-Axis
<input checked="" type="checkbox"/>	1	<Date & Time>	2	3
<input type="checkbox"/>	2		75	3
<input type="checkbox"/>	3		2	75
<input type="checkbox"/>	4		0	0
<input type="checkbox"/>	5		0	0
<input type="checkbox"/>	6		0	0
<input type="checkbox"/>	7		0	0
<input type="checkbox"/>	8		0	0

Display Style

Effect: Background

Font Size: Medium

Font Color: #0000-1

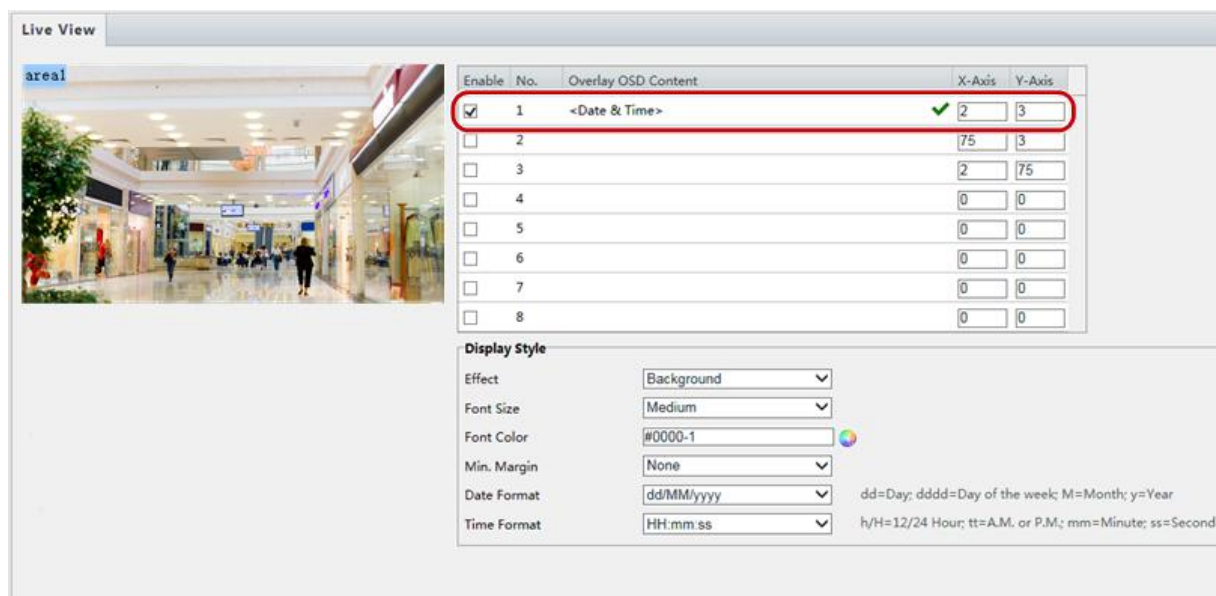
Min. Margin: None

Date Format: dd/MM/yyyy

Time Format: HH:mm:ss

dd=Day; dddd=Day of the week; M=Month; y=Year
h/H=12/24 Hour; tt=A.M. or P.M.; mm=Minute; ss=Second

The OSD interface of some models is displayed as follows.



2. Select the position and content of the OSD.

- **Position:** Click the desired box in the Live View area. After the cursor shape is changed, click and hold the button to move the box to the desired position. To set the position precisely, use the X and Y coordinates under Overlay Area.
- **Overlay OSD Content:** The drop-down list provides Time, Preset and Serial Info. You may also select Custom and enter the content you want.
- After you have set the position and OSD content, the symbol appears in the Status column, which means that the OSD is set successfully. You may set multiple lines of contents for each area and use and to adjust the sequence of display.

3. After you have completed the settings, a message appears to indicate the successful settings.

You may right-click in the preview window and then choose to view in full screen mode or at an aspect ratio. You may also double-click the preview window to enter or exit full screen mode.

To cancel OSD for an area, clear the OSD content in the **Overlay OSD Content** column or select **None** in the **Position** column.

The following shows an example time OSD.



3.3.3. Privacy Mask

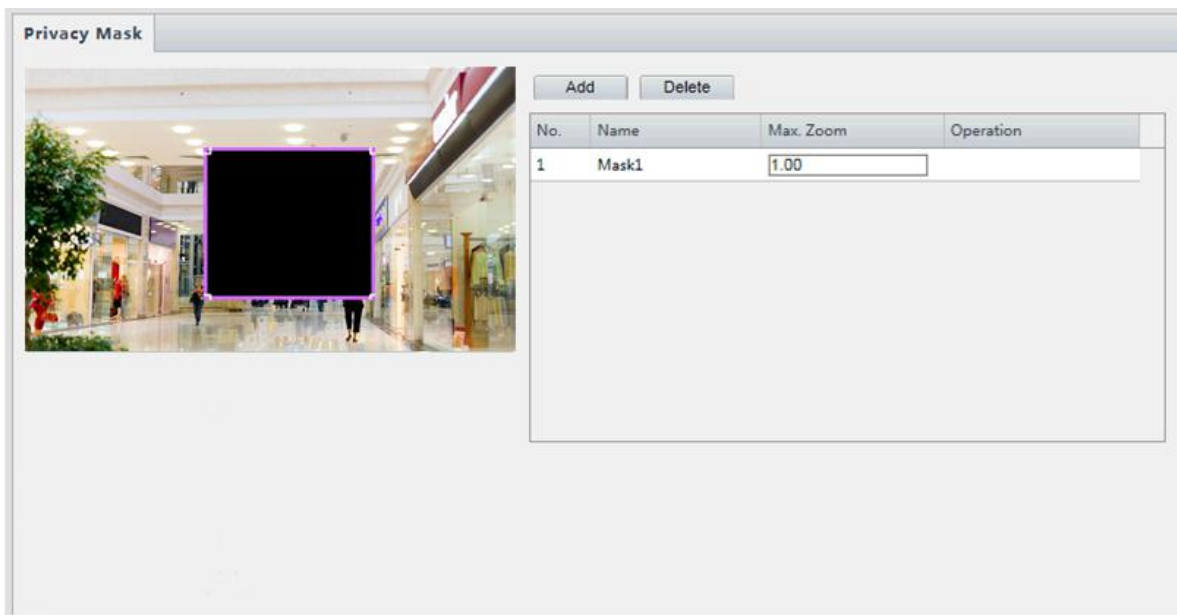
On certain occasions, you may need to set a mask area on the camera image to protect privacy, for example, the keyboard of an ATM machine.



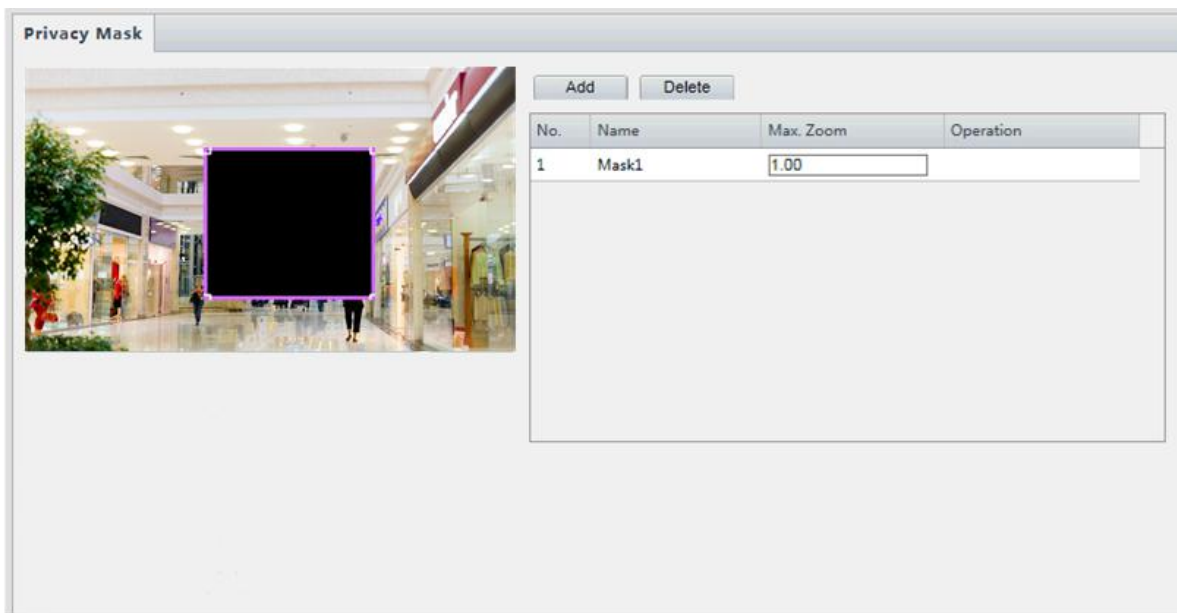
NOTE!

- This function may vary with models. Please see the actual Web interface for details.
- Some models support up to 24 privacy masks. The same picture shows up to only 8 privacy masks.

1. Click **Setup>Image>Privacy Mask**.



For some camera models, the page is displayed as follows:



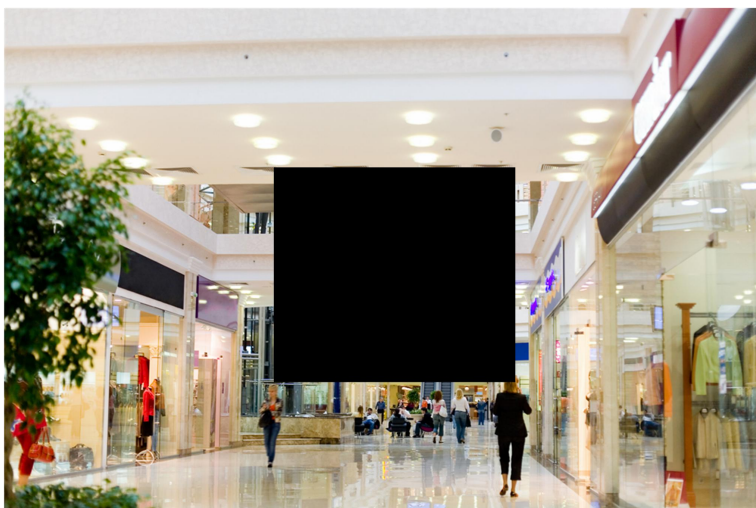
2. Click **+** to add a privacy mask, and click to delete a mask.

• To mask a position: Click the box (with Mask displayed on it) to activate the mask. After the cursor shape has changed, drag the box to the intended position.

• To mask an area: Use the mouse to draw a box on the area you want to mask.

When privacy mask is configured, the intended area is blocked. The following shows an example.

3. Set mask mode. You may select regular or irregular mode as needed.



NOTE!

●Mask mode is only available to certain models.

3.4.Audio and Video Configuration

3.4.1.Video Configuration

You can set video parameters that your camera supports and view the current status of BNC output. If available, you may also enable sub-stream and third stream as required.



NOTE!

- This function may vary with models. Only some camera models support the third stream. To determine if your camera supports this function, see the Web interface.
- After enabling the sub or third stream, modify the parameters as required. The parameters for the sub and third stream have the same meanings as that for the main stream.

1.Click **Setup>Video & Audio>Video**.

Capture Mode	1920×1080@25
Main Stream	
Video Compression	H.264
Resolution	1920×1080(1080P)
Frame Rate(fps)	25
Bit Rate(Kbps)	4096
Bitrate Type	CBR
Image Quality	Bit Rate Bit Rate Quality
I Frame Interval	50
GOP	IP
Smoothing	Clear Clear Smooth
SVC	<input type="radio"/> On <input checked="" type="radio"/> Off
Smart Encoding	Off

2.Modify the settings as required. The following table describes some major parameters.

Parameter	Description
Video Compression	<p>Three options: H.265, H.264 and MJPEG.</p> <p>Note:</p> <ul style="list-style-type: none"> ●Image Quality cannot be set when Video Compression is set to H.265 or H.264. When set to MJPEG, only three frame rates are available: 1, 3 and 5; and Bit Rate, I Frame Interval, Smoothing and Smart encoding cannot be set. ●The bit rate changes to the default when you change the setting between H.264 and H.265. The default bit rate for H.265 is half of that for H.264.
Frame Rate	<p>Frame rate for encoding images. Unit: FPS (frame per second).</p> <p>Note:</p> <p>To ensure image quality, note that the frame rate should not be greater than the reciprocal of shutter speed.</p>
Bitrate Type	<ul style="list-style-type: none"> ●CBR: Constant Bit Rate, which means that the camera transmits data at a constant data rate. ●VBR: Variable Bit Rate, which means that the camera adjusts the bit rate dynamically according to image quality.
Image Quality	<p>When Encoding Mode is VBR, you can move the slider to adjust quality level for images. Moving the slider toward Bit Rate decreases the bit rate and may affect image quality. Moving the slider toward Quality increases the bit rate and improves image quality.</p>
I Frame Interval	<p>Interval at which an I frame is encoded. Normally, a shorter I frame interval offers better image quality but consumes more bandwidth.</p>
GOP	<p>Group Of Pictures in MPEG video encoding. This parameter specifies the order in which intra-frames (I frame) and inter-frames are arranged.</p>
SVC	<p>SVC (Scalable Video Coding) can reduce storage without compromising playback quality.</p>
Smart encoding	<ul style="list-style-type: none"> ●Basic Mode: The actual bit rate is around 3/4 of the set bit rate. ●Advanced Mode: The actual bit rate is around 1/2 of the set bit rate. <p>Note:</p> <ul style="list-style-type: none"> ●When Smart encoding is enabled, video compression only supports H.264 and H.265. MJPEG is not supported. ●When Smart encoding is enabled, the capture mode does not support frame rates higher than 30.
Smoothing	<p>Set the extent of smoothing. Choosing Clear means disabling Smoothing. Moving the slider toward Smooth increases the level of smoothing but will affect image quality.</p> <p>Note:</p> <p>In a poor network environment, you can enable smoothing to get more fluent video.</p>

3. Click **Save**.

3.4.2. Audio Configuration

Audio configuration means setting audio encoding parameters for your camera.



NOTE!

This function is not supported by some models. Please see the actual model for details.

1. Click **Setup>Video & Audio>Audio**.

Audio Input

Audio Input On Off

Access Mode Line/Mic ▼

Input Gain 128 [0~255]

Audio Compression G.711U ▼

Sampling Rate(KHz) 8 ▼

Noise Suppression On Off

Channel 1 Line ▼ Enable

2.Modify the settings as required. The following table describes some major parameters.

Parameter	Description
Audio Input	No audio data will be encoded when Off is selected. Note: It is recommended to select Off if you do not need audio. This can improve device performance to some extent.
Access Mode	Currently only Line/Mic. Note: This function is not available to devices with two audio output channels.
Audio Compression	Three options: G.711U, G.711A and ACC-LC. G.711U and G.711A support 8K sampling rate only, and ACC-LC supports 8K, 16K and 48K sampling rates.
Input Gain	Audio signal amplification for sampling. The greater the gain, the greater amplification.
Noise Suppression	Used to reduce noise in images. To enable noise suppression, select On .
Channel	Audio output channel. To enable audio output, select Enable . Note: Only some camera models support two channels.

3.Click **Save**.

3.4.3.Snapshot

1.Click **Setup>Video & Audio>Snapshot**.

Snapshot On Off

Resolution

Most Large(KB)

Scheduled Snapshot

Snapshot Interval

Number to Snapshot

Snapshot Mode Schedule Repeat

No.	Snapshot Time	
1	19:12:00	

2.Select **On**, and then set resolution, most large and schedule as needed. Some parameters are described in the table below.

Parameter	Description
Snapshot Interval	Interval between two snapshots. For example, with Snapshot Interval set to 1 and Number of Snapshot set to 2, the camera will take 2 snapshots (take one first and then take another after 1 second).
Number to Snapshot	Currently 1, 2, and 3 snapshots are allowed.
Snapshot Mode	<p>Schedule: You need to set a snapshot time, e.g., 19:12:00, which means the camera takes a snapshot at 19:12:00.</p> <p>Repeat: Allows you to set an interval(unit: sec). For example, according to the settings shown in the figure above, 60 seconds must elapse before the camera takes another two snapshots.</p>

4.Click **Save**.

3.4.4.ROI

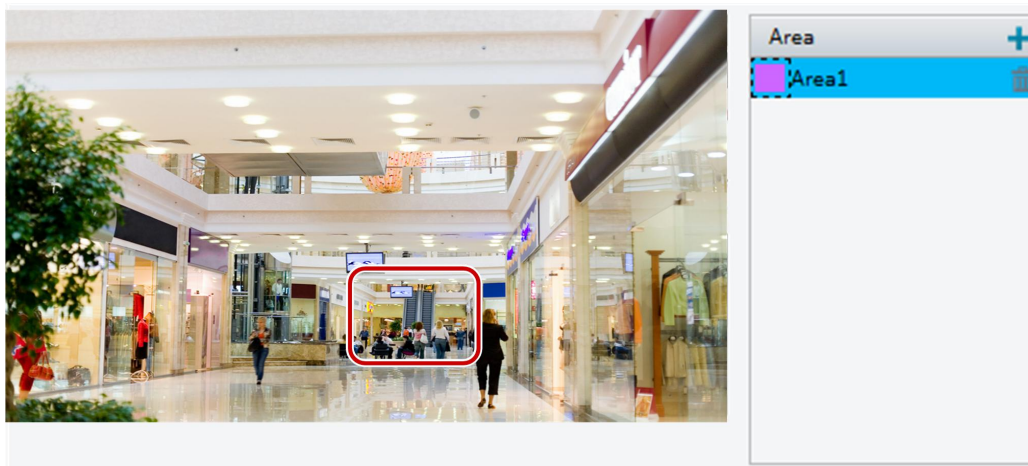
When Region of Interest (ROI) is enabled, the system ensures image quality for ROI first if the bit rate is insufficient.





NOTE!

This function is not supported by some models. Please see the actual model for details.

1.Click **Setup>Video & Audio>ROI**.



2. Click , and then drag the mouse to cover the intended part of the images. To delete, select the area and then click .

3.4.5. Media Stream Configuration

Media Stream

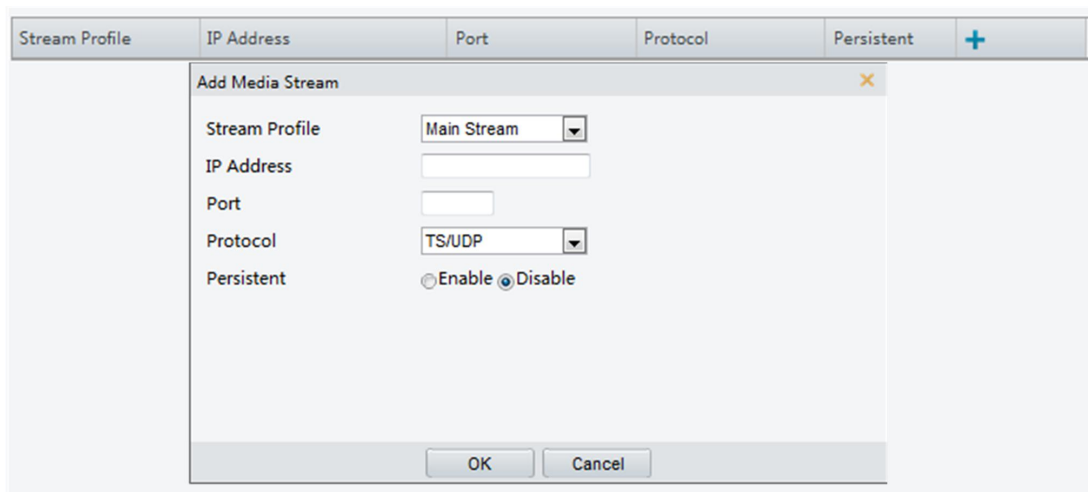
You can display the established media streams from a camera. You may also set the camera so it transmits code streams by the UDP or TCP protocol to a specified IP address and port number. The settings can be saved and take effect after the camera is restarted.




NOTE!

- This function is not supported by some models. Please see the actual model for details.
- Choosing a transport protocol based on your actual needs and network performance. Generally speaking, TCP enables better image quality than UDP but also causes higher latency.

1. Click **Setup>Video & Audio>Media Stream**.



2. Click , select a stream type, and then set the IP address and port number of the unicast or multicast group for the decoding device that receives audio and video streams from the camera.

If you want the device to establish the media stream that has been configured before automatically after the restart, select **Yes** for **Persistent**.

3. To delete a stream, click .

4. Click **Submit** to complete the operations.

RTSP Multicast Address

After an RTSP multicast address is configured, the third-party player can request the RTSP multicast media stream from the camera through the RTP protocol.

1. Click **Setup>Video & Audio>Media Stream> RTSP Multicast Address**.

Main Stream	
Multicast Address	<input type="text" value="0.0.0.0"/>
Port	<input type="text" value="0"/>
Sub Stream	
Multicast Address	<input type="text" value="0.0.0.0"/>
Port	<input type="text" value="0"/>
Third Stream	
Multicast Address	<input type="text" value="0.0.0.0"/>
Port	<input type="text" value="0"/>
<input type="button" value="Save"/>	

For some camera models, the page is displayed as follows.

Main Stream	
Multicast Address	<input type="text" value="0.0.0.0"/>
Port	<input type="text" value="0"/>
Sub Stream	
Multicast Address	<input type="text" value="0.0.0.0"/>
Port	<input type="text" value="0"/>
Third Stream	
Multicast Address	<input type="text" value="0.0.0.0"/>
Port	<input type="text" value="0"/>
Multicast Address	<input type="text" value="0.0.0.0"/>
Port	<input type="text" value="0"/>
Multicast Address	<input type="text" value="0.0.0.0"/>
Port	<input type="text" value="0"/>

2. Set the multicast address (224.0.0.0 to 239.255.255.255) and port number (0 to 65535).

3. Click **Save**.

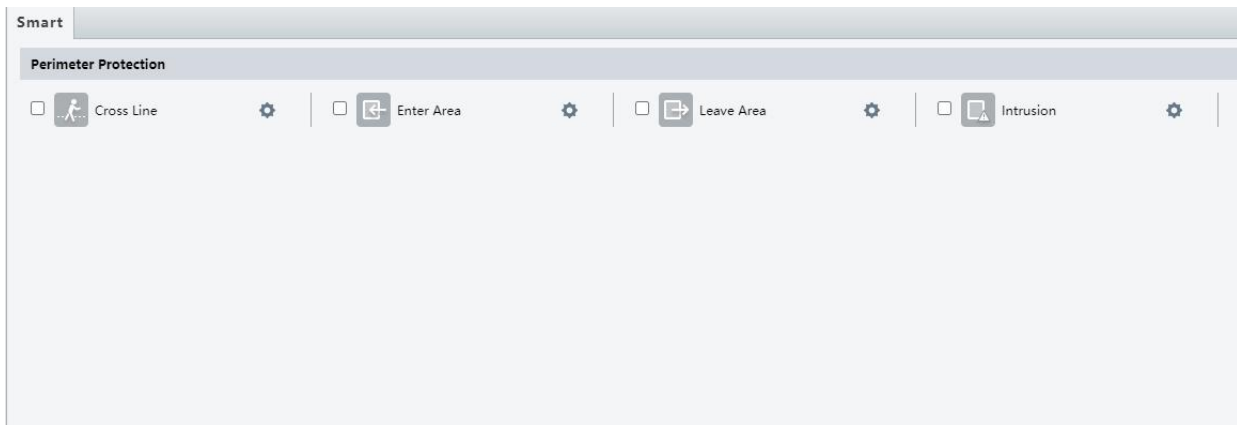
3.5. Intelligent Alarm Configuration

You can configure intelligent monitoring to count people and monitor moving objects. Intelligent monitoring includes people counting, intrusion detection, and auto tracking.

The supported functions may vary with camera model.

3.5.1. Smart

Click **Setup>Intelligent>Smart**.



3.5.2. Cross Line Detection

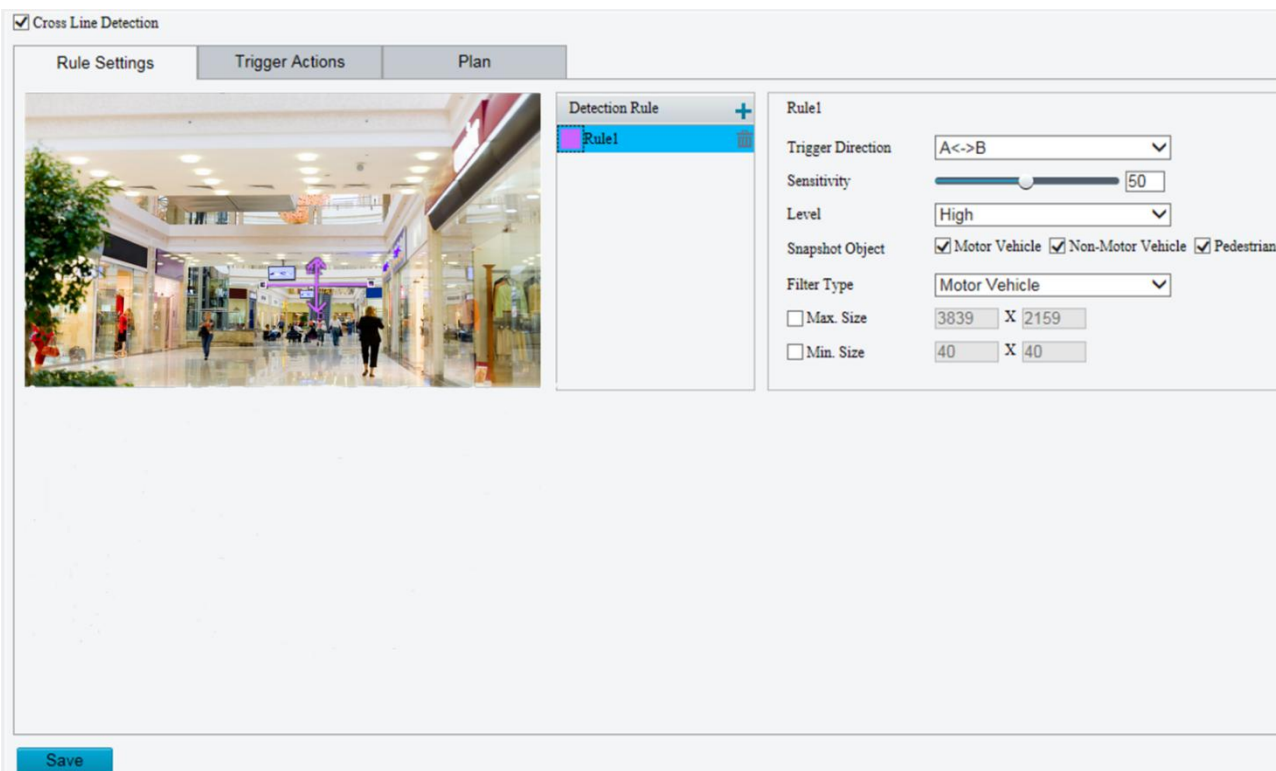
Cross line detection detects objects that cross a virtual line in live video and triggers alarm when such an event is detected.



NOTE!

- Only some camera models support this function.
- The supported alarm triggering and arming schedule may vary with camera model. Please see the actual Web interface for details.
- The camera takes the snapshot and sends the snapshot to the back end.

1. Click **Setup >Intelligent>Smart**. Choose **Cross Line** and then click .



2. Select **Cross Line Detection**.

3. In the **Detection Rule** area, click to add a new detection area. To delete a detection area, click .

4. On the small preview window, drag the line to the intended position and set the detection range.

5. Set the direction and sensitivity for the camera to decide whether to report a cross line detection alarm.

6. Set the priority of detection to judge the trigger sequence when detection rules are triggered at the same time.

7. Set snapshot object type to judge whether to snap small pictures

8. Set object filter type and size, alarm-triggered actions and arming schedule as required.

9. Set the alarm-triggered actions and arming schedule as required. For the detailed steps, see the descriptions of alarm-triggered actions in Common Alarm Configuration.

10. Click **Save**.

3.5.3. Enter Area

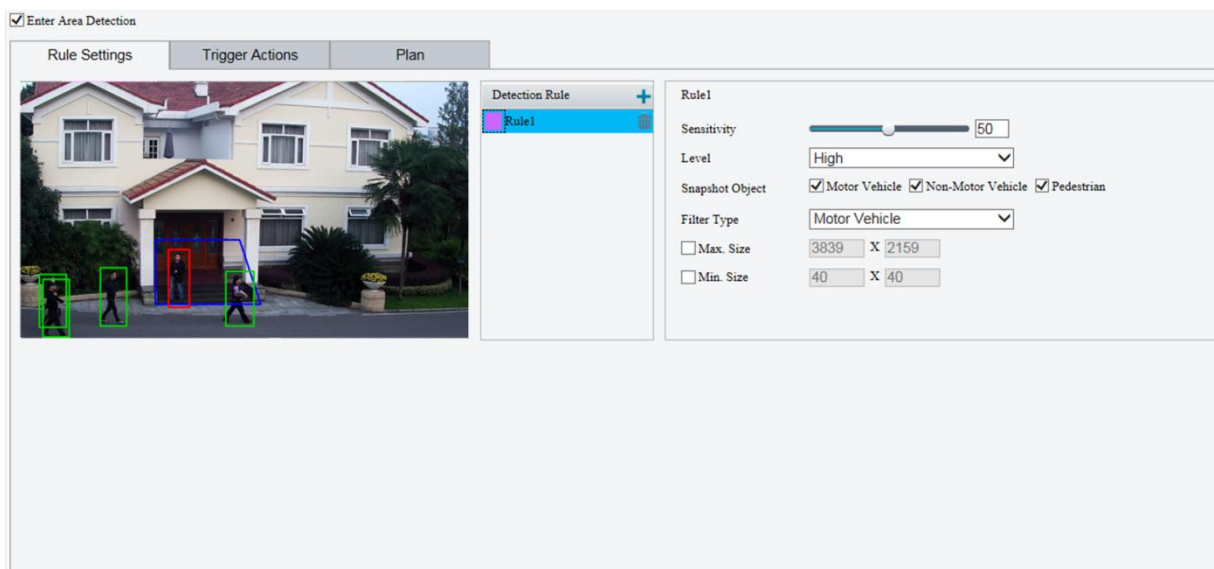
Enter Area detection detects objects that enter a specified area, and triggers alarm when such an event is detected.



NOTE!

- Only some camera models support this function.
- The supported alarm triggering and arming schedule may vary with camera model. Please see the actual Web interface for details.
- The camera takes the snapshot and sends the snapshot to the back end.

1. Click **Setup > Intelligent > Smart**. Choose **Enter Area**, and then click .



4. Select Enter Area Detection.

5. In Rule Settings area, click to add a new detection area. To delete a detection area, click .

6. Drag the borders of the box to set the intended position and range.

7. Set detection sensitivity for the camera to decide whether to report an alarm.

2. Set the priority of detection to judge the trigger sequence when detection rules are triggered at the same time.

3. Set snapshot object type to judge whether to snap small pictures.

4. Set object filter type and size, alarm-triggered actions and arming schedule as required.

5. Set the alarm-triggered actions and arming schedule as required. For the detailed steps, see the descriptions of alarm-triggered actions in Common Alarm Configuration.

6. Click **Save**.

3.5.4. Leave Area

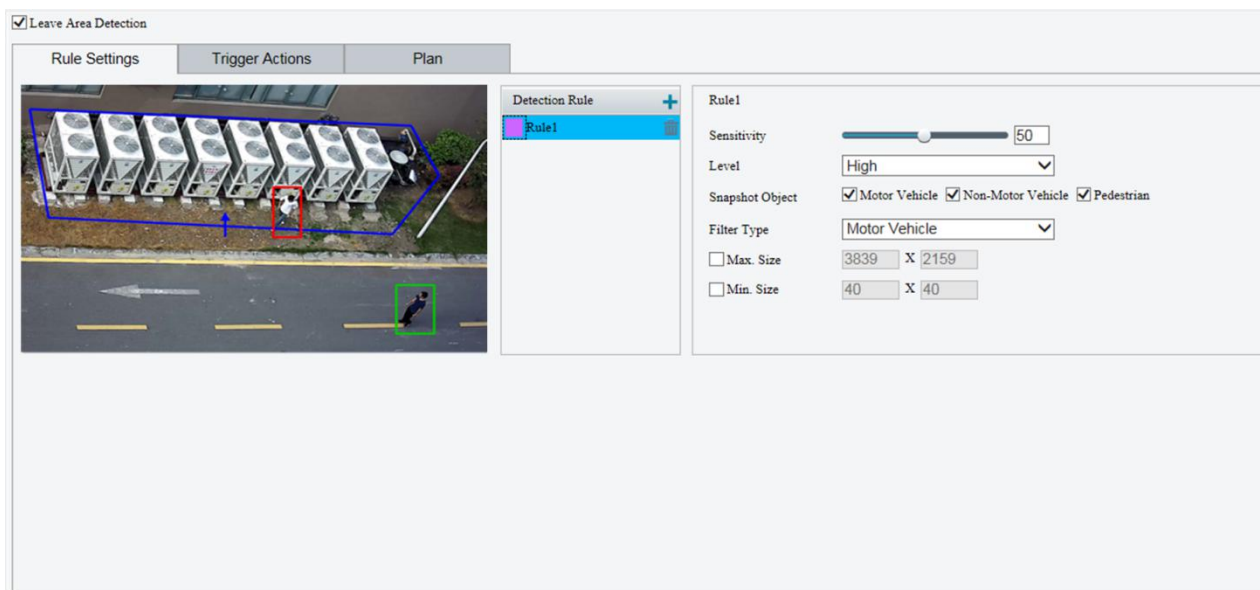
Leave Area detection detects objects that leave a specified area, and triggers alarm when such an event is detected.



NOTE!

- Only some camera models support this function.
- The supported alarm triggering and arming schedule may vary with camera model. Please see the actual Web interface for details.
- The camera takes the snapshot and sends the snapshot to the back end.

1. Click Setup > Intelligent > Smart. Choose Leave Area, and then click .



2. Select Leave Area Detection.

3. In Rule Settings area, click to add a new detection area. To delete a detection area, click .

4. Drag the borders of the box to set the intended position and range.

5. Set detection sensitivity for the camera to decide whether to report an alarm.

7. Set the priority of detection to judge the trigger sequence when detection rules are triggered at the same time.

8. Set snapshot object type to judge whether to snap small pictures.

9. Set object filter type and size, alarm-triggered actions and arming schedule as required.

10. Set the alarm-triggered actions and arming schedule as required. For the detailed steps, see the descriptions of alarm-triggered actions in Common Alarm Configuration.

6. Click Save.

3.5.5. Intrusion Detection

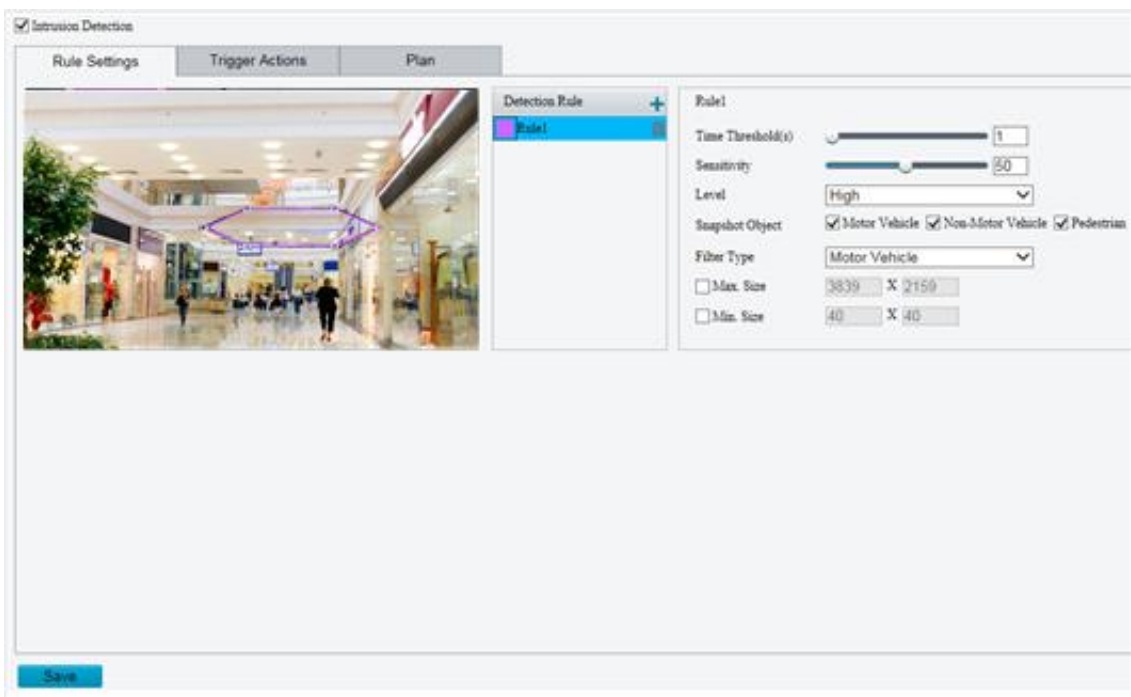
Intrusion detection detects objects that enter a specified area in live video and triggers alarm when such an event is detected.



NOTE!

- Only some camera models support this function.
- The supported alarm triggering and arming schedule may vary with camera model. Please see the actual Web interface for details.
- The camera takes the snapshot and sends the snapshot to the back end.

1. Click **Setup > Intelligent > Smart**. Choose **Intrusion** and then click .



2. Select **Intrusion Detection**.

3. In the **Detection Rule** area, click to add a new detection area. To delete a detection area, click .

4. Drag the borders of the box to set the intended position and range.

5. Set time threshold, sensitivity for the camera to decide whether to report an intrusion detection alarm.

- **Time Threshold:** The minimum length of time that the intruder stays in the detection area before an alarm will be reported.
- **Sensitivity:** Sensitivity of detection. A greater value means higher detection sensitivity.

7. Set the priority of detection to judge the trigger sequence when detection rules are triggered at the same time.

8. Set snapshot object type to judge whether to take small pictures

6. Set object filter type and size, alarm-triggered actions and arming schedule as required. Set the alarm-triggered actions and arming schedule as required. For the detailed steps, see the descriptions of alarm-triggered actions in **Common Alarm Configuration**.

7. Click **Save**.

3.5.6. Advanced Settings

Advanced settings include snapshot clarity and detection mode for intelligent functions.

Detection Parameters



NOTE!

- Only some camera models support advanced settings. Please see the actual Web interface for details.
- The default detection mode is Normal Mode. Set as required.

1. Click **Setup > Intelligent > Advanced Settings**. Click **Detection parameters** tab.



2. Choose a detection mode. Choose **Filter Repeated Motion Mode** to prevent repeated alarm reporting caused by repeated motion detected in the surveillance environment.

3. Click **Save**.

3.6.Common Alarm Configuration

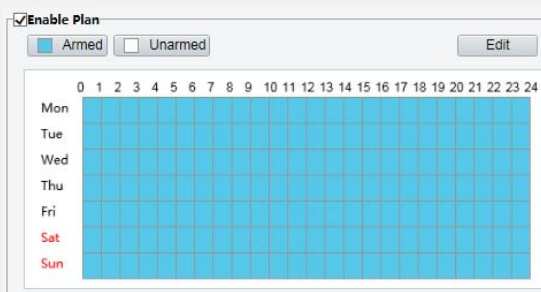
You can schedule alarm reporting and set actions that can be triggered by other devices so that alarms and the triggered actions can be handled in time.

Alarm reporting can be scheduled for motion detection alarm, alarm input, alarm output, tampering detection alarm, and audio detection alarm. The supported alarms may vary with device model. For the alarm types that your camera supports, see the Web interface.

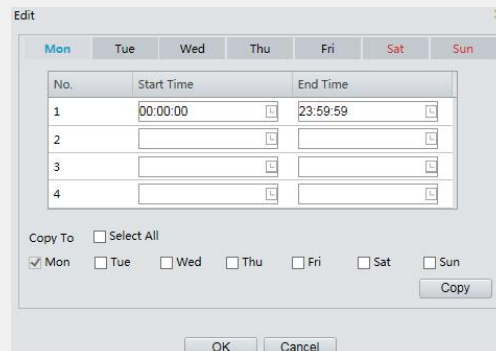
The following table describes the major alarm-triggered actions and how to set a plan.

Item	Description
Alarm Output	Select the check box. This setting is the alarm output interface linked to motion detection alarm. Note: When an alarm is reported, the camera triggers alarm output so as to trigger actions by a third-party device.
Upload to FTP	With Upload to FTP selected, the camera will automatically upload snapshots to the specified FTP server when an alarm is triggered. Note: Make sure you have completed FTP and Snapshot before using this function.
Recording	With Recording selected, the camera will automatically record video when an alarm is triggered. Note: Please set Post-Record(s) on the Storage page first. Post-Record(s) specifies how long recording continues after the end of an alarm.
Alarm Center	With Alarm the Center selected, the camera will send alarm information to the central server when an alarm is triggered. Note: Please complete settings on the Server page first.
Upload Image(Original)	With Upload Image(Original) selected, The camera uploads the snapshot original image to the server or platform . Note: Make sure you have completed FTP and Snapshot before using this function.
Upload Image(Object)	With Upload Image(Object) selected, The camera uploads the snapshot object image to the server or platform. Note: Make sure you have completed FTP and Snapshot before using this function.
Trigger E-mail	With Trigger E-mail selected, the camera will automatically send snapshots to the specified E-mail address when an alarm is triggered. Note: Make sure you have completed E-Mail before using this function.

Enable Plan
Select the check box and set the start and end times during which motion detection alarm is effective. You can directly drag the mouse to draw a plan and click **Edit** to edit time periods in the table. The time periods cannot overlap. The camera reports alarms during the specified period(s) only.
You can select from Monday to Sunday and set four periods for each day.



Drag the mouse to draw a plan



Edit time periods in the table

Note:
Plan drawing using a mouse is only supported by IE versions later than 8.0. After setting the plan for one day, you can apply the same settings to other days by clicking **Copy** and **Paste**.

1. Click **Save**.

3.6.1. Configuring Motion Detection Alarm

Motion detection detects the object motion in a specified rectangular area during a period. You need to set a detection area, sensitivity of detection, object size, and history for the camera to decide whether to report a motion detection alarm when it detects motion.

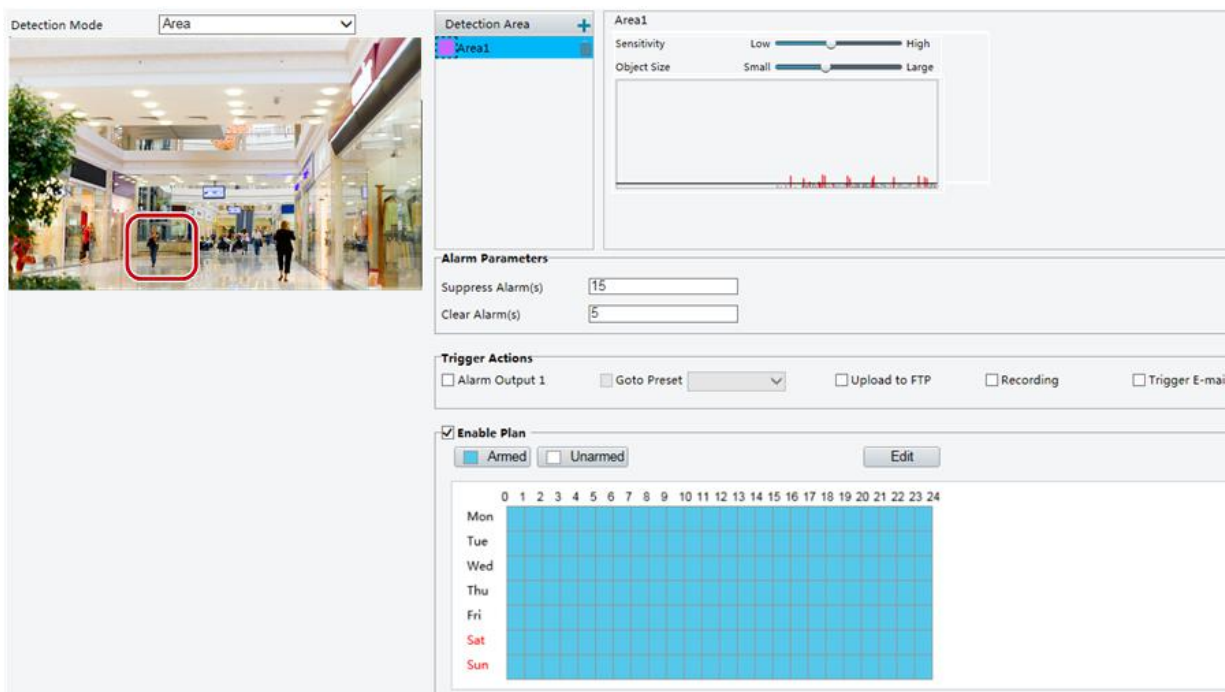


NOTE!

- This function is not supported by some models. Please see the actual model for details.
- The alarm triggered actions may vary with models. Please see the actual Web interface for details.

Area Detection

1. Click **Setup > Events > Common Alarm > Motion Detection**. Set **Detection Mode** to **Area**.

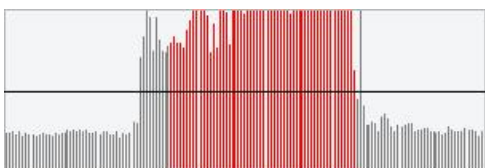


2. In the **Detection Area** area, click to add a new detection area. To delete a detection area, click .

3. Click and drag the mouse to set a detection area.

4. Set the detection sensitivity, object size, and history for the camera to decide whether to report a motion detection alarm.

- Moving the slider to the right increases detection sensitivity. When the extent of motion within the detection area exceeds the set object size, the camera reports an alarm.
- Object size specifies the minimum ratio of the object's size to the size of the total detection area before an alarm will be reported. That is to say, to detect motion of tiny objects, you need to draw a small box (detection area) in the actual motion area accordingly.
- Motion detection results are shown in real time. The red lines represent the raised motion detection alarms. The longer a line, the greater the extent of motion. The denser the lines, the greater the frequency of motion.

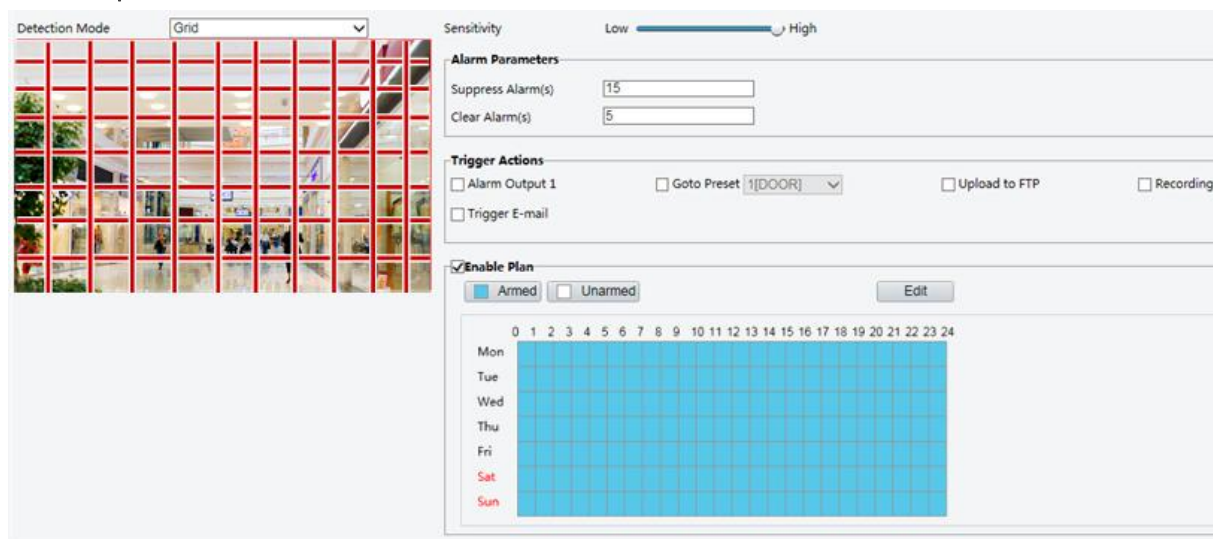


5. Set the alarm parameters.

- Suppress Alarm(s): After an alarm is triggered, the same alarm will not be reported within the set time.
 - Clear Alarm(s): After an alarm is triggered,
 - a. If the same alarm is not triggered within the set time, the alarm will be cleared and the same alarm can be reported again.
 - b. If the same alarm is triggered within the set time, the alarm will not be cleared until the suppress alarm time expires. Then the same alarm can be reported again.
6. Set actions to be triggered by motion detection alarm and the plan.

Grid Detection

1. Click **Setup > Events > Motion Detection**. Set **Detection Mode** to **Grid**.



2. Detection area(s) can be irregular on the grid.
3. Set detection sensitivity for the camera to decide whether to report a motion detection alarm (alarm visible on compatible NVR).
4. Set alarm parameters.
 - Suppress Alarm(s): After an alarm is triggered, the same alarm will not be reported within the set time.
 - Clear Alarm(s): After an alarm is triggered,
 - a. If the same alarm is not triggered within the set time, the alarm will be cleared and the same alarm can be reported again.
 - b. If the same alarm is triggered within the set time, the alarm will not be cleared until the suppress alarm time expires. Then the same alarm can be reported again.
5. Set actions to be triggered by motion detection alarm and the plan. For the detailed steps, see the descriptions of alarm-triggered actions in **Area Detection in Configuring Motion Detection Alarm**.
6. Click **Save**.

3.6.2. Configuring Tampering Alarm

Configure tampering alarm so that the camera reports a tampering alarm when the lens is blocked for a certain length of time.



NOTE!

- This function is not supported by some models. Please see the actual model for details.
- The alarm triggered actions may vary with models. Please see the actual Web interface for details.

1. Click **Setup > Events > Common Alarm > Tampering Alarm**.

Tampering Alarm On Off

Sensitivity 50

Duration(s)

Trigger Actions

Alarm Output 1 Goto Preset 1[DOOR] Upload to FTP Recording Trigger E-mail

Enable Plan

Armed Unarmed

	0	1	2	3	4	5	6	7	8	9	10	11	12	13	14	15	16	17	18	19	20	21	22	23	24
Mon																									
Tue																									
Wed																									
Thu																									
Fri																									
Sat																									
Sun																									

2. Select **On** for **Tampering Alarm**.

3. Set detection sensitivity and duration for the camera to decide whether to report a tampering alarm.

Sensitivity is divided into three levels: high-level, mid-level and low-level. Compared with mid-level sensitivity, the camera can detect blocking from a farther location when sensitivity is set to high. The camera reports an alarm when the lens is blocked for a specified length of time.

Tampering alarm is effective to the whole screen. To disable tampering alarm, clear the **Tampering Alarm** check box.

4. Set actions to be triggered by tampering alarms and the plan. For the detailed steps, see the descriptions of alarm-triggered actions in *Configuring Motion Detection Alarm*.

5. Click **Save**.

3.6.3. Configuring Audio Detection Alarm

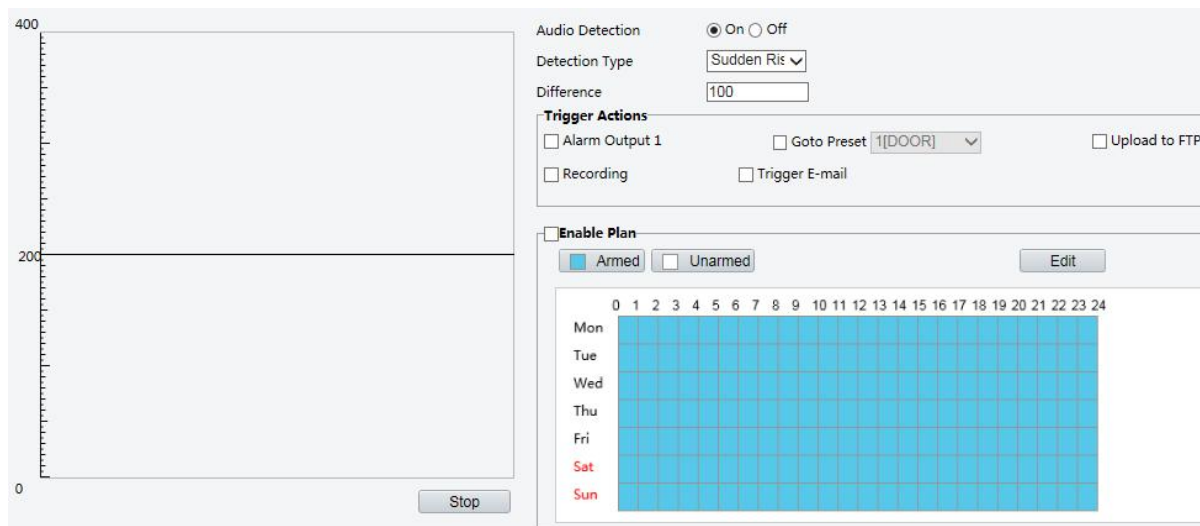
The camera can detect input audio signals for exceptions. When the rise or fall of volume exceeds the set limit, or when the input volume reaches the threshold, the camera reports an alarm and triggers the set actions. Make sure that an audio input device is correctly connected to the camera and audio input is turned on in *Configuring Alarm Input*.



NOTE!

- This function is not supported by some models. Please see the actual web interface for details.
- The alarm triggered actions may vary with models. Please see the actual Web interface for details.

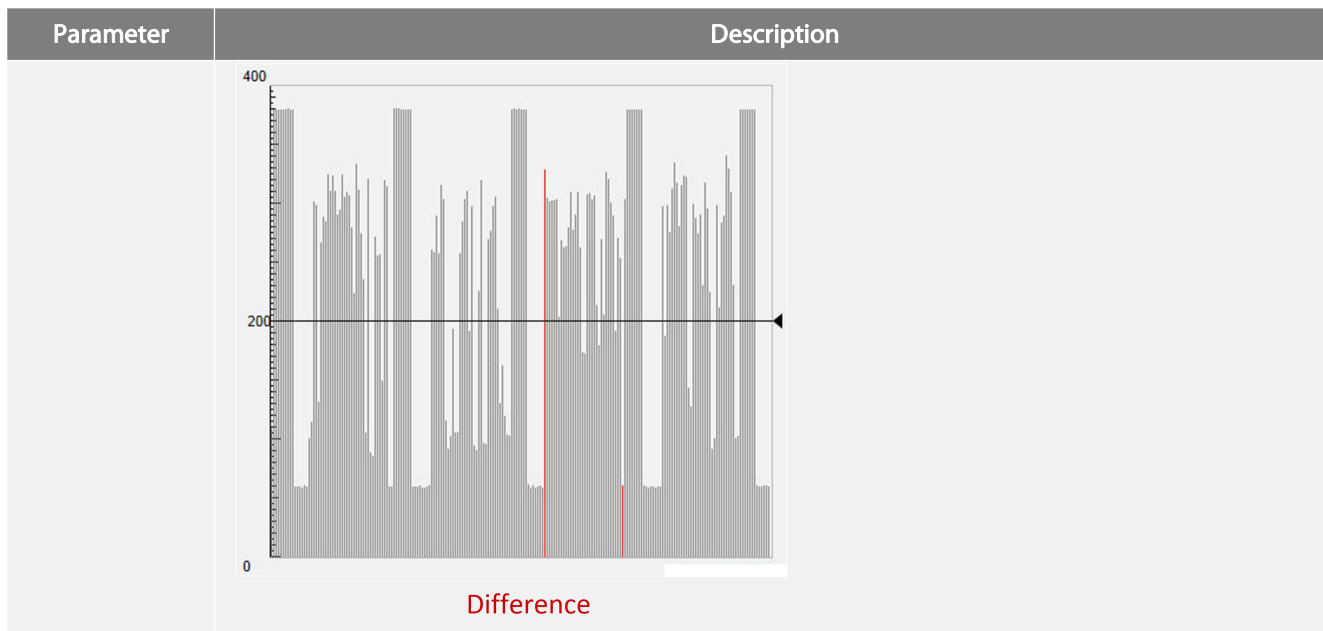
1. Click **Setup>Events>Common Alarm >Audio Detection**.



2. Select **Enable** for **Audio Detection**, select a detection type and set the difference or threshold. To disable audio detection, clear the **Enable** check box.

The following table describes some major parameters.

Parameter	Description
Detection Type	<ul style="list-style-type: none"> ●Sudden Rise: An alarm is reported when the rise of volume exceeds the difference. ●Sudden Falls: An alarm is reported when the fall of volume exceeds the difference. ●Sudden Change: An alarm is reported when the rise or fall of volume exceeds the difference. ●Threshold: An alarm is reported when the volume exceeds a threshold.
Difference	<ul style="list-style-type: none"> ●Threshold: After a volume is set as the threshold, an alarm is reported when the threshold is exceeded. ●Difference: the difference between two volumes. When the rise or fall of volume exceeds the difference, an alarm is reported. <p>Note:</p> <ul style="list-style-type: none"> ●The scale in the audio detection area is used to measure sound volume. ●Audio detection results are shown in real time. The red part indicates the reported audio detection alarms.



3.Set the alarm-triggered actions and arming schedule as required. For the detailed steps, see the descriptions of alarm-triggered actions inConfiguring Motion Detection Alarm.

4.Click **Save**.

3.6.4.Configuring Alarm Input

The camera can receive alarm information from a third-party device. To use this function, you need to configure the following information for alarm input first: port, alarm name, alarm type (normally open or normally closed) and alarm reporting time.



NOTE!

- This function is not supported by some models. Please see the actual model for details.
- The alarm triggered actions may vary with models. Please see the actual Web interface for details.

1.Click **Setup>Events>Common Alarm >Alarm Input**.

Select Alarm:

Alarm Name:

Alarm ID:

Alarm Type:

Alarm Input: On Off

Trigger Actions

Alarm Output 1 Goto Preset Upload to FTP Recording Trigger E-mail

Enable Plan

Armed Unarmed

	0	1	2	3	4	5	6	7	8	9	10	11	12	13	14	15	16	17	18	19	20	21	22	23	24
Mon																									
Tue																									
Wed																									
Thu																									
Fri																									
Sat																									
Sun																									

2.Select alarm and set the alarm name.

3. Select **N.O.** or **N.C.** according to the type of the third-party alarm input device. For example, if the third-party alarm input device is normally open, you need to select **N.O.** here, so that the camera can receive alarm information from the third-party alarm input device.
4. Set actions to be triggered by an input alarm and the plan. For the detailed steps, see the descriptions of alarm-triggered actions in Configuring Motion Detection Alarm.
5. Click **Save**.

3.6.5. Configuring Alarm Output

After alarm output is triggered by a motion detection alarm, Boolean alarm, the camera can output alarm information to the third-party device if alarm output is set correctly to Normally Open or Normally Closed. The alarm output duration is configurable.



NOTE!

This function is not supported by some models. Please see the actual model for details.

1. Click **Setup>Events>Common Alarm >Alarm Output**.

2. Select the alarm and set the alarm name.
3. Set the status to **N.O.** (default setting) and set the alarm duration.
4. Set actions to be triggered by an input alarm and the plan. For the detailed steps, see the descriptions of alarm-triggered actions in Configuring Motion Detection Alarm.
5. Click **Save**.



CAUTION!

- Strictly follow the sequence when powering on the devices to avoid damaging camera components:
1. Check that the alarm type is set to **Normally Open** (default setting), and that the camera and the alarm output device are powered off.
 2. After completing the connection, power on the camera first and then power on the alarm output device.

3.7.Memory Card Storage



NOTE!

- This function is not supported by some models, and may vary with models. Please see the actual model for details.
- Edge storage is recommended when the camera operates in stand-alone mode. When the camera is managed by the central management server, you need to stop edge storage to avoid affecting the cache post recording service.
- Post-Record is displayed if the camera is capable of this feature; This parameter is not displayed if not supported by the camera

3.7.1.Setting Edge Storage

Edge storage is used to save video data and snapshots to the memory card directly. Edge storage is recommended when the camera is running in stand-alone mode.

Manual storage

The camera records live video repeatedly if manual storage is enabled.

1.Click **Setup>Storage>Storage**.

2.Start edge storage and modify the settings as required.The following table describes some major parameters.

Parameter	Description
Storage Medium	Storage resource type. Note: ●To format the memory card, disable the storage function for the card first. Then Click Format and then click OK to confirm the operation. The system will restart when the format is completed. ●Information about the total and free space is displayed.
Data Policy	<ul style="list-style-type: none"> ●Overwrite: If there is no free space in the memory card, new data will overwrite the existing data repeatedly. ●Stop: If there is no free space in the memory card, new data will not be saved to the memory card.
Post-Record(s)	For alarm-triggered recording, length of time that recording continues after the end of the alarm.

3.Click **Save**.

Planned storage

If planned storage is enabled, the camera records video to the memory card during the specified periods.

1.Click **Setup>Storage>Storage**.

Storage Medium Enable

Total Capacity 7594 MB, Free Space 382 MB.

Allocate Capacity

Video(MB) (The remaining capacity is used for image storage.)

Common Snapshot(MB) (The remaining capacity is used for smart snapshot storage.)

Smart Snapshot(MB)

Video Storage Info

Storage Policy Manual Storage Planned Storage Off

Stream

When Storage Full Overwrite Stop

Post-Record(s)

Plan

Armed Unarmed

	0	1	2	3	4	5	6	7	8	9	10	11	12	13	14	15	16	17	18	19	20	21	22	23	24
Mon																									
Tue																									
Wed																									
Thu																									
Fri																									
Sat																									
Sun																									

For some camera models, the page is displayed as follows.

Storage Medium Enable

Total Capacity 7514 MB, Free Space 7514 MB.

Allocate Capacity

Video(MB) (The remaining capacity is used for image storage.)

Common Snapshot(MB)

Video Storage Info

Storage Policy Manual Storage Planned Storage Off

Stream

When Storage Full Overwrite Stop

Post-Record(s)

Plan

Armed Unarmed

	0	1	2	3	4	5	6	7	8	9	10	11	12	13	14	15	16	17	18	19	20	21	22	23	24	
Mon																										
Tue																										
Wed																										
Thu																										
Fri																										
Sat																										
Sun																										

2. Select **Planned Storage**, and then set the periods during which the camera records video to the memory card.
3. Click **Save**.



NOTE!

- Planned storage is not effective when manual storage and planned storage are both enabled.
- To query recordings in the memory card, see [Video Playback and Download with Edge Storage](#).

3.7.2. Setting Cache Post Recording

A camera under centralized management can use the memory card as a backup storage resource of the central management server. If storage from the camera to the central storage device is interrupted due to unstable network connection, the camera automatically will start cache post recording and store videos to the memory card.

With recording backup enabled, the camera can automatically transfer the video stored in the memory card to a storage resource of the backup server in form of file when the communication between the camera and the backup server is restored.



NOTE!

Before you set cache post recording for a camera, check that:

- The memory card is correctly installed on the camera.
- Backup resource has been added on the central server.
- Backup resource has been allocated for the camera.
- Post-Record is displayed if the camera is capable of this feature; This parameter is not displayed if not supported by the camera

Disable edge storage

1. Click **Setup>Storage>Storage**.

Storage Medium	Memory Card	Format	<input checked="" type="checkbox"/> Enable
Total Capacity 7594 MB, Free Space 382 MB.			
Allocate Capacity			
Video(MB)	<input type="text" value="7594"/>	(The remaining capacity is used for image storage.)	
Common Snapshot(MB)	<input type="text" value="0"/>	(The remaining capacity is used for smart snapshot storage.)	
Smart Snapshot(MB)	<input type="text" value="0"/>		
Video Storage Info			
Storage Policy	<input type="radio"/> Manual Storage <input type="radio"/> Planned Storage <input checked="" type="radio"/> Off		
Post-Record(s)	<input type="text" value="60"/>		

2.Set **Storage Policy** to **Off**. Post-Record is displayed if the camera is capable of this featureand then set **Post-Record(s)**.

3.Click **Save**.

3.8.System Maintenance



NOTE!

This function is not supported by some models. Please see the actual model for details.

3.8.1.Security

User Management

There are two types of users in the system:

- Administrator: referred to as “admin” in this manual. The default name of the administrator is admin, which cannot be modified. Admin has full permission and can manage all users and devices. Only one admin user is allowed in the system.
- Common user: referred to as “user” in this manual. User only has permission to play live and recorded video. Up to 32common users are allowed in the system.

You can add a user on the user management interface(under **Setup>Security> User**).

After the user is added successfully, you can change the password by entering the new password or delete the user by clearing the username.



NOTE!

- Only admin can change passwords. Changing the username or password for a user when the user is still logged in will force the user to log out. The user must use the new username or password to log in.
- Only admin can add and delete users. Deleting a user when the user is still logged in will force the user to log out. A deleted user cannot log in.

Setting Secure Data Transmission

Set a secure channel for data transmission to ensure security.



NOTE!

This function is not supported by some models. Please see the actual model for details.

1.Click **Setup>Network>Port**.

HTTP Port	<input type="text" value="80"/>
HTTPS Port	<input type="text" value="443"/>
RTSP Port	<input type="text" value="554"/>

2.Enter the port number in the **HTTPS Port** text box.

3.Click **Save**.

4. Click **Setup>Security> Network Security> HTTPS**.

5. Select **On** for **HTTPS**. You may import a custom SSL certificate as needed.

6. Click **Save**.

Next time you log in, enter the address in *https://IP:HTTPS port number* format, for example, *https://192.168.1.13:443* to enter secure channel mode. If you use the default HTTPS port, enter *https://IP*.

Authentication

RTSP (Real Time Streaming Protocol) is an application layer protocol. To transmit and control the audio and video, set RTSP authentication on the Web interface.

1. Click **Setup>Security> Network Security>Authentication**.

2. Select an authentication mode and then click **Save**.

Hide Vendor Information

You can set to hide the vendor information of the network camera on the Web interface.

1. Click **Setup>Security> Registration Info**.

2. Under **RegistrationInfo**, select **On**.

3. Click **Save**.

APR Protection

This function protects a camera from ARP attacks. The gateway and the MAC address must be set properly before a PC can access the camera from another network; if an incorrect MAC is set, only PCs on the same LAN can access.

1. Click **Setup>Security> Network Security> ARP Protection**.

2. Select the check box to enable the ARP binding function and set the gateway MAC address.

3. Click **Save**.

IP Address Filtering

Use IP address filtering to allow or forbid access from specified IP address(es).



NOTE!

This function is not supported by some models. Please see the actual model for details.

1. Click **Setup>Security > Network Security>IP Address Filtering**.

IP Address Filtering On Off

Filtering Mode Whitelist

No.	IP Address	
1	1.1.1.1	

Save

2. Select **On** to enable IP address filtering.
3. Select a filtering mode, and then add IP address(es).
4. Click **Save**.



NOTE!

- If Filtering Mode is set to Whitelist, then only the added IP address(es) are allowed to access the camera. If Filtering Mode is set to Deny Access, then only the added IP address(es) are not allowed to access the camera.
- Up to 32 IP addresses are allowed. Each IP address can be added once only.
- The first byte of each IP address must be 1-223, and the fourth cannot be 0. For example, the following IP addresses are illegal and cannot be added: 0.0.0.0, 127.0.0.1, 255.255.255.255, 224.0.0.1.

Access Policy

5. Click **Setup>Security>Network Security>Access Policy**.

MAC Authentication On Off

Illegal Login Lock On Off

Save

6. Select **On** to enable Illegal Login Lock and MAC Authentication.
7. Click **Save**.

Watermark

Use watermark to encrypt custom information with video to prevent unauthorized delete or alteration.



NOTE!

Only some camera models support this function.

1. Click **Setup>Security>Watermark**.

Watermark On Off

Watermark Content ABC

Save

2. Select **On** to enable watermark, and then input watermark content.
3. Click **Save**.

3.8.2. Setting the System Time

You can use the following methods to adjust the system time of your device.

Manually Setting or Synchronizing the System Time

1. Click **Setup>Common>Time**, and then click the **Time** tab.

Sync Mode	Sync with Latest Server Time
Time Zone	(UTC) London, Casablanca, Coordinated Universal Time
System Time	2017-09-12 08:07:09 <input type="button" value="Sync with Computer Time"/>

2. Select a synchronization mode.
3. Set the correct time zone and system time. You may also click **Sync with Computer Time** to synchronize the time settings of your camera with that of your PC.
4. Click **Save**.

Synchronizing with the NTP Server

1. Click **Setup>Common>Time**, and then click the **Time** tab.

Sync Mode	Sync with NTP Server
Time Zone	(UTC) London, Casablanca, Coordinated Universal Time
System Time	2018-05-10 08:48:53 <input type="button" value="Sync with Computer Time"/>
NTP Server	
NTP Server Address	0.0.0.0
Port	123
Update Interval(s)	600

2. Set **Sync Mode** to **Sync with NTP Server**, and then set the IP address and port of the NTP server and update interval.
3. Click **Save**. The camera will periodically synchronize time with the NTP server.

Setting the DST

1. Click **Setup>Common>Time**, and then click the **DST** tab.

DST	
DST	<input checked="" type="radio"/> On <input type="radio"/> Off
Start Time	Apr First Sun 02 h
End Time	Oct Last Sun 02 h
DST Bias	60mins

2. Select **On** for **DST**, set the start time, end time, and DST bias.
3. Click **Save**.

3.8.3. Setting Servers

Intelligent Server

You need to configure the intelligent server if an ultra sensitive camera is managed by a central server.



NOTE!

- Only some camera models support intelligent server.
- To use face snapshot, you need to configure the TMS server to which snapshots are uploaded.

1. Click **Setup>Common>Server**, and then click the **Intelligent Server** tab.

Server IP	<input type="text" value="0.0.0.0"/>
Server Port	<input type="text" value="5196"/>
Platform Communication Type	<input type="text" value="UNV"/> ▼
Camera No.	<input type="text" value="IPC"/>
Device No.	<input type="text" value="IPC"/>

2. Set the IP address of the TMS server and complete other settings.
3. Click **Save**.

3.8.4. Viewing Device Status

You can view the current status of your camera.

4. Click **Setup>Common>Basic Info**.

Basic Info	
Model	<input type="text" value="IPC"/>
Firmware Version	<input type="text" value="IPC"/>
Hardware Version	<input type="text" value="A"/>
Boot Version	<input type="text" value="V1.0"/>
Serial No.	<input type="text"/>
Network	<input type="text" value="192.168.1.13/255.255.255.0/192.168.1.1"/>
MAC Address	<input type="text"/>
Status	
System Time	<input type="text" value="2018/1/25 19:16:27"/>
Operation Time	<input type="text" value="0 Day(s) 0 Hour(s) 0 Minute(s)"/>
Intelligent Server	<input type="text" value="Offline"/>

5. Click **Refresh** for the latest status information.
6. View the device information.



NOTE!

You may view device model, firmware version, intelligent server status, etc, on the basic info page.

3.8.5. Photo Storage Status

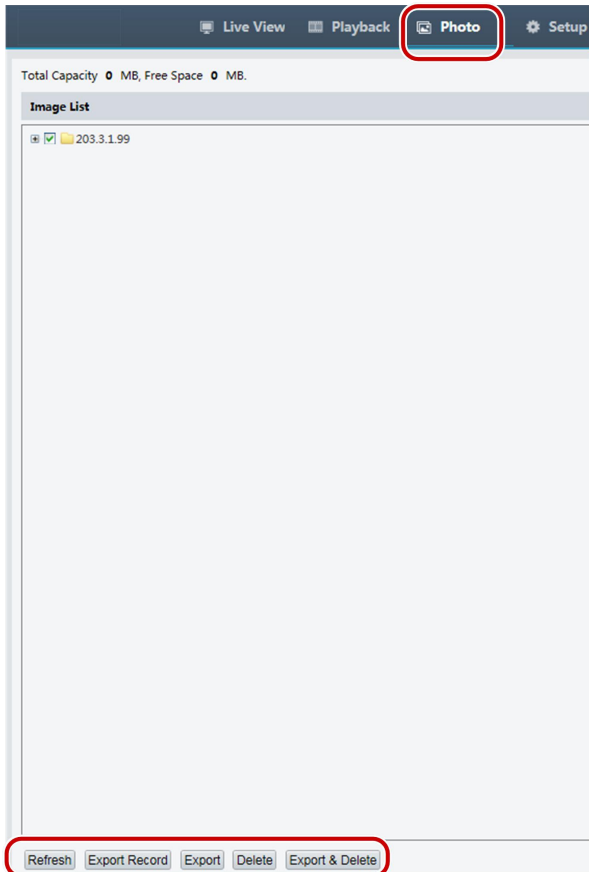
View the current photo storage status. See Memory Card Storage for the full storage policy.



NOTE!

Only models with storage function support this function. Please see the actual model for details.

1. Click **Photo**.

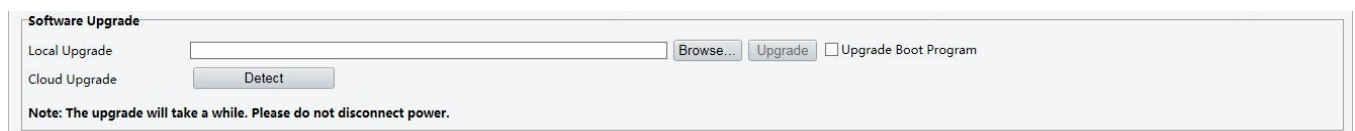


2. Click **Refresh** to update the storage status.
3. You can export or delete photos in the **Image List** area.

3.8.6. Upgrading the Device

If the device is managed by the central management server and you want to upgrade the devices in batch mode, it is recommended to perform the upgrade operation on the central server. For detailed steps, see the user manual for the central management server.

4. Click **Setup>System>Maintenance**.



5. Under **Software Upgrade**, click **Browse** and select the correct upgrade file.
6. Click **Upgrade** and then confirm to start. The camera will restart automatically after the upgrade is completed. Some devices support boot program upgrade. To upgrade, select **Upgrade Boot Program**.
7. You may click **Detect** to check for new versions available to cloud upgrade.

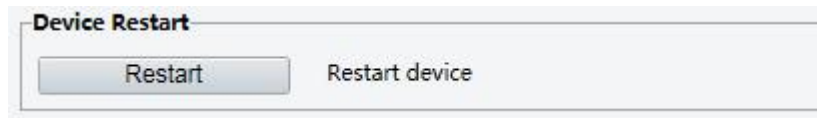


NOTE!

- You must use the correct upgrade file for your camera. Otherwise, unexpected results may occur.
- The upgrade file is a ZIP file and must include all the necessary files.
- The boot program loads the operating system and then the system starts running. The upgrade boot program function is disabled by default, and only the camera will be upgraded to the latest version. If enabled, both the camera and the boot program are upgraded, and the operating system of the following new version can be booted properly and the camera can be upgraded conveniently.
- Ensure that the power supply is normal during upgrade. The device will restart after the upgrade is completed.

3.8.7.Restarting the System

1.Click **Setup>System>Maintenance**.



2.Under **Device Restart**, click **Restart**. The device will restart after you confirm the operation.



CAUTION!

Perform this operation with caution because restarting the system interrupts the ongoing service.

3.8.8.Importing and Exporting System Configuration File

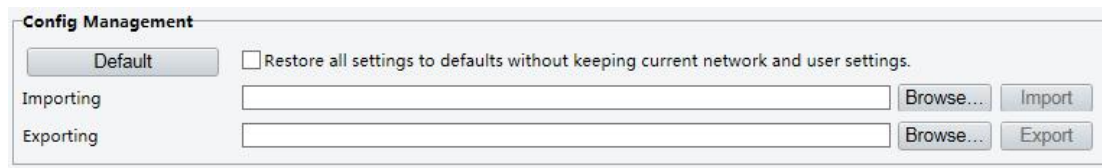
Export the current configurations of the camera and save them to the PC or an external storage medium. You can also quickly restore configurations by importing backup configurations stored on the PC or an external storage medium back to the camera.



CAUTION!

- After you perform the Default operation, all settings are restored to factory defaults, except the following: login password of the system administrator, network settings, and system time.
- Make sure you import the correct configuration file for your camera. Otherwise, unexpected results may occur.
- The camera will restart when the configuration file is imported successfully.

1.Click **Setup>System>Maintenance**.



2.To import configurations that you have backed up, click **Browse** next to the **Import** button and select the configurations you want to import, and then click **Import**. The result will be displayed.

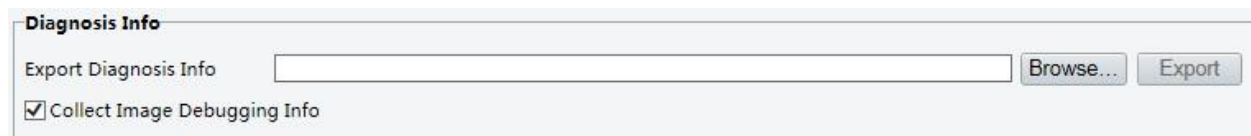
3.To export current system configurations, click **Browse** (next to the **Exporting** field), set the destination and then click **Export**.

4.To restore default configurations, click **Default** and then confirm the operation. The device will restart and restore the default configurations.Clicking **Default** with the check box selected will completely restore the device to factory default settings.

3.8.9.Collecting Diagnosis Information

Diagnosis information includes logs and system configurations. You can export diagnosis information to your PC.

1.Click **Setup>System>Maintenance**.



2.In the **Diagnosis Info** area, click **Browse** to set the destination and then click **Export**.



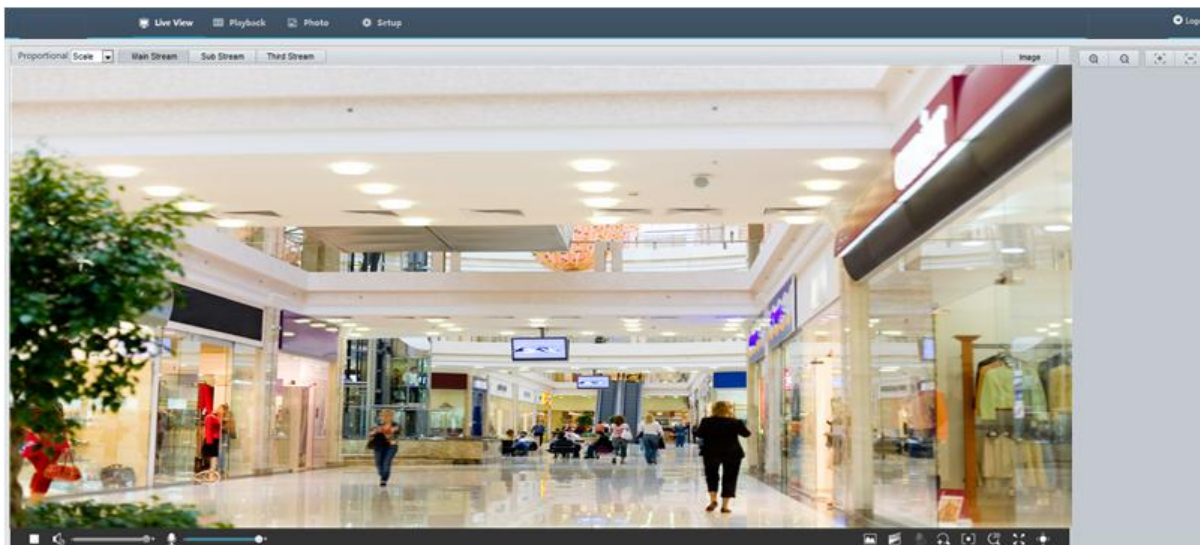
NOTE!

- Diagnosis information is exported to the local folder in form of a compressed file. You need to decompress the file using a tool such as WinRAR and then open the file using a text editor.
- By selecting Collect Image Debugging Info, you can display video with debugging information at the same time, which makes troubleshooting easier.

4.Live View

Live view means playing live video (real-time audio and video) received from a camera in a window through the Web interface.

If you log in with the **Live View** check box selected, live video appears by default when you are logged in. You may double-click the window to enter or exit full screen mode.





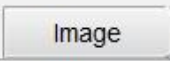

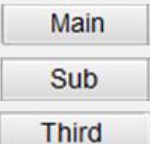
4.1.Live View Toolbar



NOTE!

The supported live view operations may vary with camera model. For the operations that your camera supports, see the Web interface.

Button	Description
	Play/stop live video.
	Adjust the output volume for the media player on the PC.
	Adjust the microphone volume on the PC during audio communication between the PC and the camera.
	Take a snapshot of the current image displayed on the PC. Note: The path for saving snapshots are set in System Configuration.
	Start/stop local recording. Note: The path for saving local recordings is set in System Configuration.
	Start/stop audio communication between the PC and the camera.
	Start/stop digital zoom. For more details, seeUsing Digital Zoom.
	Start/stop area focus. For more details, seeUsing Area Focus.
	Start/stop 3D positioning. For more details, seeUsing 3D Positioning.
	Show/hide the PTZ control panel.
	Set image display ratio in the window. For example, to display high-definition images at original 16:9, select Scale ; to display according to window size, select Stretch ; to display with the original image size, select Original .

Button	Description
	Reset the packet loss rate to zero. Note: After you move the mouse cursor on a live view window, this button appears on the floating toolbar.
	Display packet loss rate and bit rate information at the bottom of the window. Note: After you move the mouse cursor on a live view window, this button appears on the floating toolbar. Click this button to always display the information. With another click, the information appears only when you move the mouse cursor over the window or place it at the bottom. If the mouse cursor rests on the window for around 3 seconds or leaves the window, the information disappears.
	Click this button to open the image setting page.
	Display in full screen mode.
	Select a live video stream that the camera supports: main stream, sub stream or third stream.

4.2.Viewing Certain Area of Images

Digital zoom, area focus and 3D positioning allow you to get more details of certain part of images. Digital zoom enlarges an image with loss in image quality, while 3D positioning enlarges an image without.

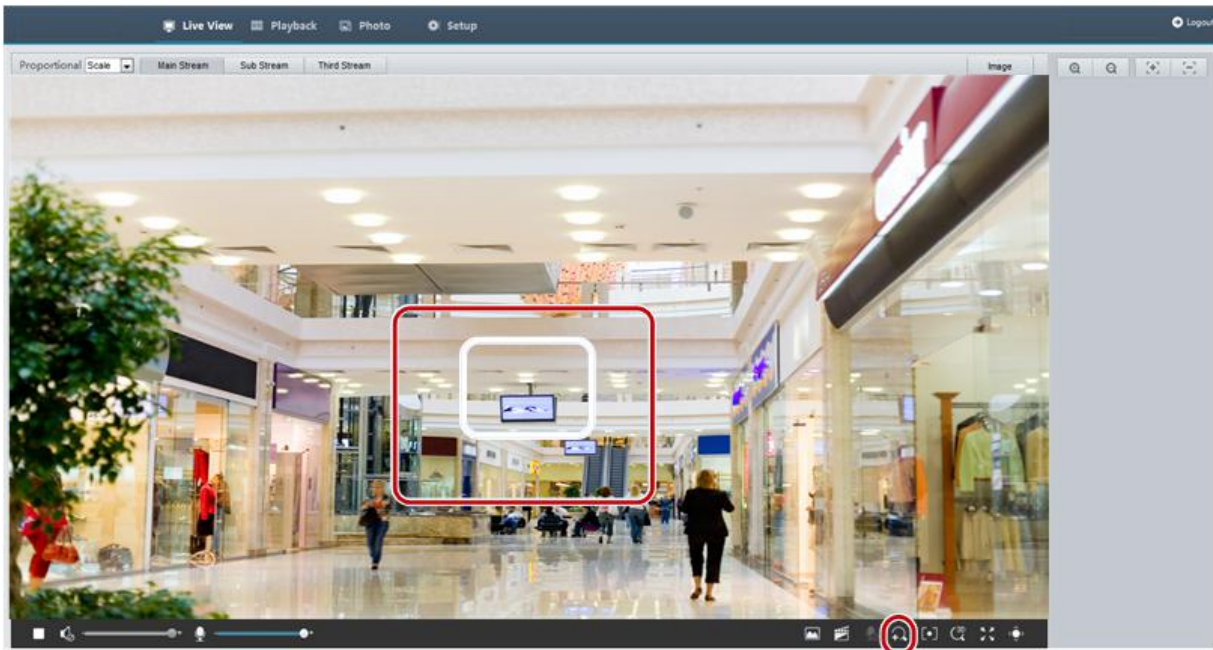
4.2.1.Using Digital Zoom




NOTE!

The supported live view operations may vary with camera model. For the operations that your camera supports, see the Web interface.

1.On the **Live View** page, click  on the toolbar.



2. Click and hold the mouse button, and then drag from top down (draw a rectangle) to specify an area. To restore the original image size and zoom in on other areas of the image, right-click the mouse.


3. To exit, click .

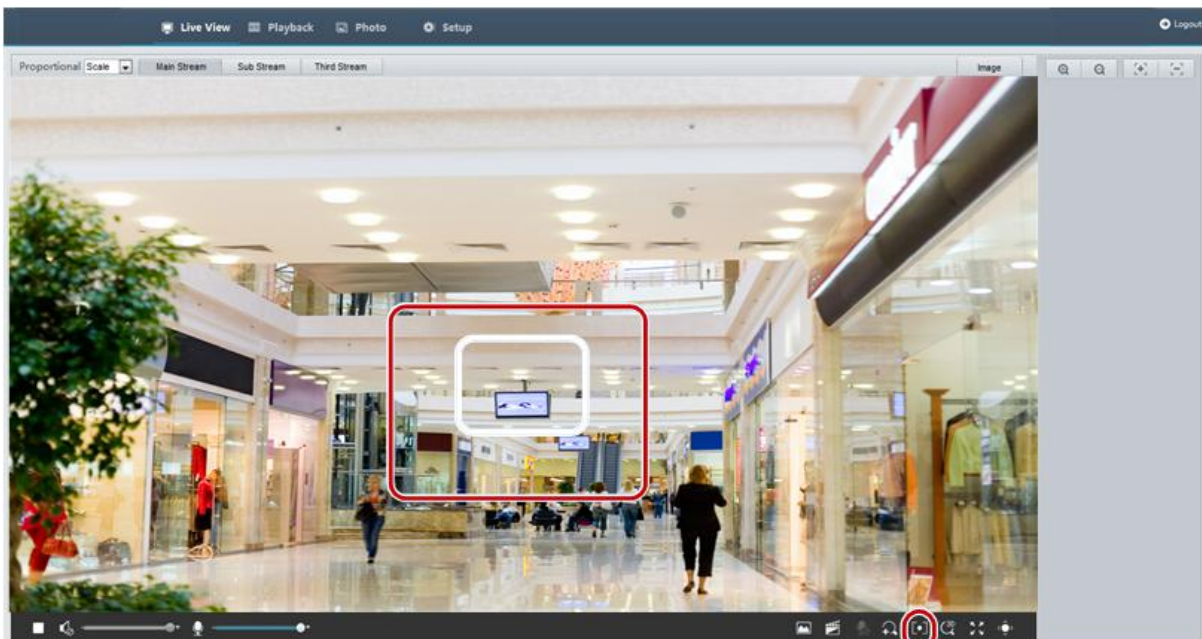
4.2.2. Using Area Focus



NOTE!

The supported live view operations may vary with camera model. For the operations that your camera supports, see the Web interface.

1. On the **Live View** page, click  on the toolbar.



2. Click and hold the mouse button, and then drag from top down (draw a rectangle) to specify an area.

3.To exit, click

5.Video Playback and Download with Edge Storage



NOTE!

- Edge storage refers to recording video to the memory card of a frontend device (mostly a camera). Local recording refers to recording video to a local PC client.
- Before you play back video with edge storage, check that the camera has been installed with a memory card and storage has been configured.
- This function is not supported by some models. Please see actual models for details.

5.1.Video Playback

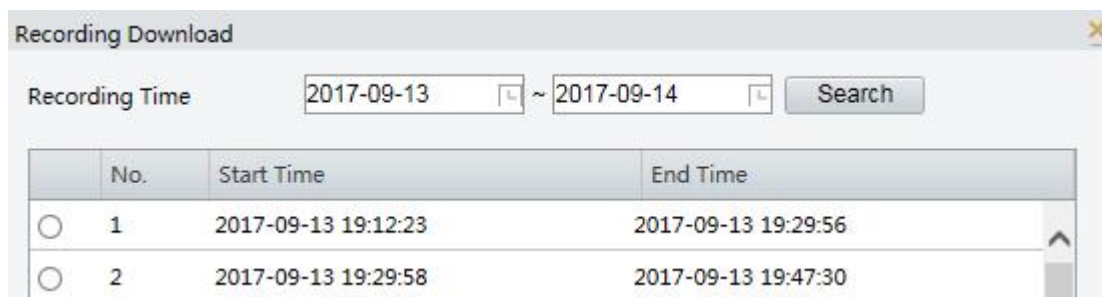
1.Click **Playback** on the home page.



- 2.Select the date from the calendar.
- 3.Click **Query**.
- 4.Under **Results**, double-click the time period to start playing the recording.

5.2.Download

1.Click **Playback** on the home page.



2.Search for video within a specified period. The results will be shown in a list.

3. Select your video and click **Download**. The video will be downloaded to your local path from the memory card (local path can be changed in **Local Settings**).

4. Click **Open** to show the folder where the downloaded video is saved.

6. Appendix A Glossary

Acronym	Description
ARP	Address Resolution Protocol
CBR	Constant Bit Rate
DNS	Domain Name Service
DDNS	Dynamic Domain Name Service
DHCP	Dynamic Host Configuration Protocol
DST	Daylight Saving Time
FTP	File Transfer Protocol
GOP	Group Of Pictures
GUI	Graphical User Interface
HTTPS	Hyper Text Transfer Protocol over SSL
IE	Internet Explorer
IMOS	IP Multimedia Operation System
IP	Internet Protocol
IPC	IP Camera
MTU	Maximum Transmission Unit
NTP	Network Time Protocol
OSD	On Screen Display
PoE	Power over Ethernet
PPPoE	Point-to-Point Protocol over Ethernet
PTZ	Pan, Tilt, Zoom
ROI	Region of Interest
SMTP	Simple Mail Transfer Protocol
SSL	Secure Socket Layer
UNP	Universal Network Passport
USB	Universal Serial Bus
VBR	Variable Bit Rate
WDR	Wide Dynamic Range

7. Appendix B FAQ

What to do if no message prompts me to install ActiveX when I log in on a Windows 7 PC the first time

Answer: Follow these steps to turn off UAC and then log in again:

1. Click the **Start** button, and then click **Control Panel**.
2. In the search box, type uac, and then click **Change User Account Control Settings**.
3. Move the slider to the **Never Notify** position, and then click **OK**.

4. After UAC is turned off, log in again.

What to do if the installation of ActiveX failed

Answer: If the installation failed, add the IP address of the camera as a trusted site: open **Internet Option** in IE, click the **Security** tab, click **Trusted sites**, and then click **Sites** to add the website.

If you use Windows 7, you need to save the **setup.exe** to your PC first, right-click the file, select **Run as administrator**, and then install it according to instructions.

What to do if live video fails when I log in for the first time

Answer: Close the firewall on your PC and then log in to the Web interface again.



 <https://www.fs.com>



The information in this document is subject to change without notice. FS has made all efforts to ensure the accuracy of the information, but all information in this document does not constitute any kind of warranty.