



Cable ID: CAT6A-SFTP-BE

Date / Time: 01/17/2019 02:49:57 PM

Headroom 7.5 dB (NEXT 36-78)

Test Limit: TIA Cat 6A Perm. Link

Cable Type: Cat 6A S/FTP

NVP: 74.0%

Operator: FRANK

Software Version: V6.0 Build 6

Limits Version: V7.0

Calibration Date:

Main (Module): 02/06/2018

Remote (Module): 02/06/2018

Test Summary: PASS

Model: DSX-8000

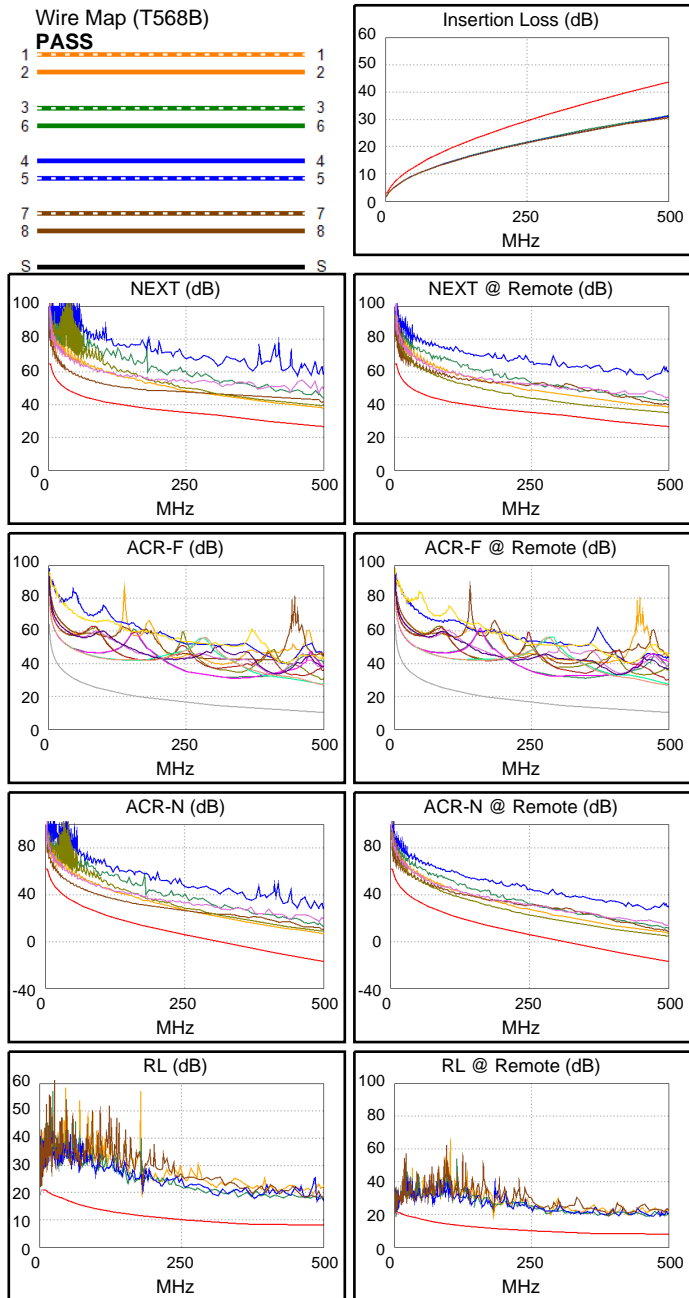
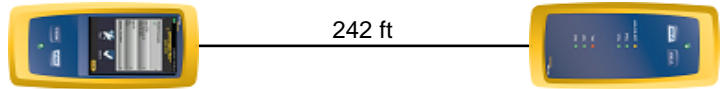
Main S/N: 1803463

Remote S/N: 1803429

Main Adapter: DSX-PLA804

Remote Adapter: DSX-PLA804

Length (ft), Limit 295	[Pair 45]	242
Prop. Delay (ns), Limit 498	[Pair 36]	339
Delay Skew (ns), Limit 44	[Pair 36]	7
Resistance (ohms)	[Pair 36]	10.69
Insertion Loss Margin (dB)	[Pair 36]	12.3
Frequency (MHz)	[Pair 36]	500.0
Limit (dB)	[Pair 36]	43.8



Worst Case Margin Worst Case Value

PASS	MAIN	SR	MAIN	SR
Worst Pair	36-45	36-78	12-36	36-78
NEXT (dB)	10.7	7.5	11.2	8.3
Freq. (MHz)	120.0	294.0	500.0	500.0
Limit (dB)	40.6	34.2	26.7	26.7
Worst Pair	36	36	36	36
PS NEXT (dB)	10.3	8.4	10.9	8.7
Freq. (MHz)	300.0	409.0	500.0	499.0
Limit (dB)	31.4	26.8	23.8	23.8

PASS	MAIN	SR	MAIN	SR
Worst Pair	78-45	78-45	78-45	78-45
ACR-F (dB)	16.7	16.5	16.7	16.5
Freq. (MHz)	500.0	500.0	500.0	500.0
Limit (dB)	10.2	10.2	10.2	10.2
Worst Pair	45	45	45	45
PS ACR-F (dB)	16.6	16.3	18.0	18.8
Freq. (MHz)	11.6	3.6	500.0	500.0
Limit (dB)	39.9	50.0	7.2	7.2

N/A	MAIN	SR	MAIN	SR
Worst Pair	36-45	36-45	12-36	36-78
ACR-N (dB)	13.9	13.9	23.5	21.5
Freq. (MHz)	32.8	4.5	500.0	500.0
Limit (dB)	39.6	59.5	-17.1	-17.1
Worst Pair	36	36	36	36
PS ACR-N (dB)	15.3	15.0	23.2	21.1
Freq. (MHz)	7.4	4.5	500.0	500.0
Limit (dB)	52.8	57.2	-20.0	-20.0

PASS	MAIN	SR	MAIN	SR
Worst Pair	78	12	45	12
RL (dB)	6.2	4.8	8.3	7.1
Freq. (MHz)	6.4	6.4	489.0	180.0
Limit (dB)	21.0	21.0	8.0	11.4

Compliant Network Standards:

10BASE-T	100BASE-TX	100BASE-T4
1000BASE-T	2.5GBASE-T	5GBASE-T
10GBASE-T	ATM-25	ATM-51
ATM-155	100VG-AnyLan	TR-4
TR-16 Active	TR-16 Passive	