



Cable ID: CAT6-SF/UTP-BE

Date / Time: 01/17/2019 02:41:35 PM

Headroom 3.8 dB (NEXT 12-45)

Test Limit: TIA Cat 6 Perm. Link

Cable Type: Cat 6 SF/UTP

NVP: 74.0%

Operator: FRANK

Software Version: V6.0 Build 6

Limits Version: V7.0

Calibration Date:

Main (Module): 02/06/2018

Remote (Module): 02/06/2018

Test Summary: PASS

Model: DSX-8000

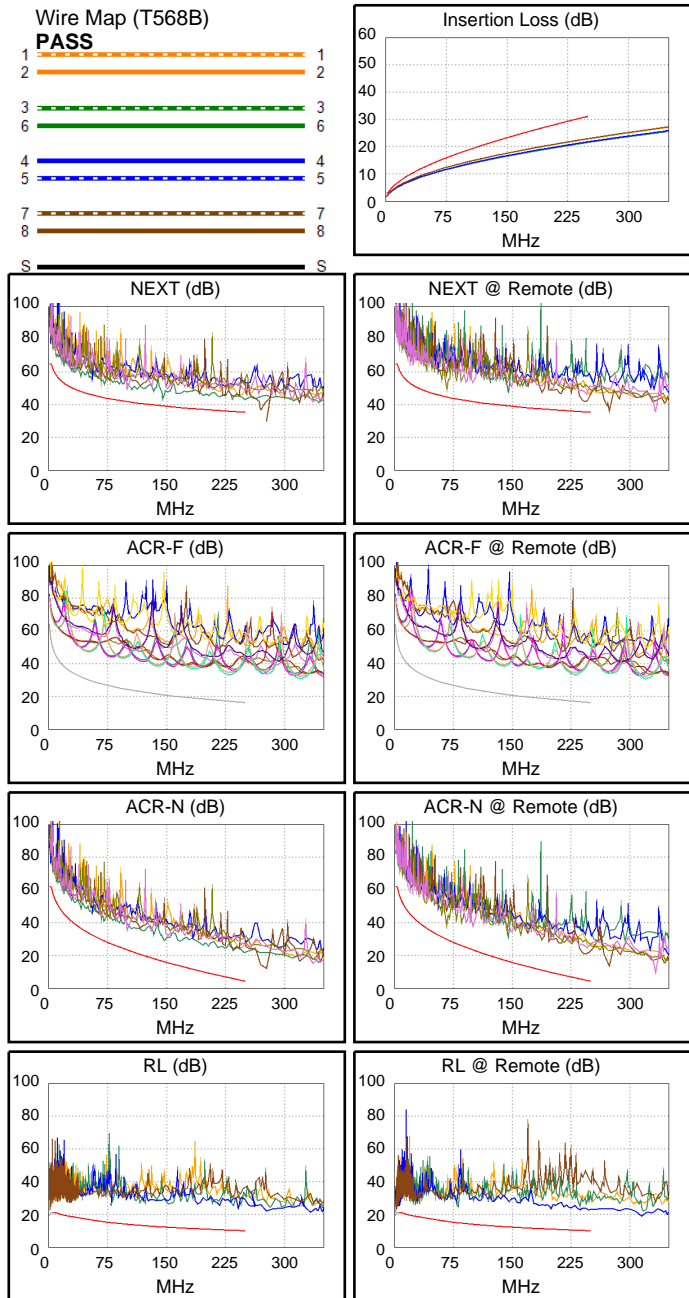
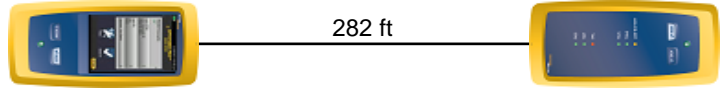
Main S/N: 1803463

Remote S/N: 1803429

Main Adapter: DSX-PLA804

Remote Adapter: DSX-PLA804

Length (ft), Limit 295	[Pair 36]	282
Prop. Delay (ns), Limit 498	[Pair 12]	418
Delay Skew (ns), Limit 44	[Pair 12]	31
Resistance (ohms)	[Pair 12]	11.47
Insertion Loss Margin (dB)	[Pair 78]	8.2
Frequency (MHz)	[Pair 78]	250.0
Limit (dB)	[Pair 78]	31.1



Worst Case Margin Worst Case Value

PASS	MAIN	SR	MAIN	SR
Worst Pair	12-45	36-78	12-45	36-45
NEXT (dB)	3.8	4.8	7.7	6.1
Freq. (MHz)	145.5	66.8	250.0	242.0
Limit (dB)	39.2	44.7	35.3	35.6
Worst Pair	12	36	12	45
PS NEXT (dB)	6.1	6.8	8.6	7.8
Freq. (MHz)	145.5	66.8	248.0	242.0
Limit (dB)	36.6	42.2	32.8	32.9

PASS	MAIN	SR	MAIN	SR
Worst Pair	45-78	45-78	45-78	45-78
ACR-F (dB)	16.5	16.6	16.5	16.7
Freq. (MHz)	230.5	229.5	230.5	232.5
Limit (dB)	16.9	17.0	16.9	16.9
Worst Pair	45	45	45	45
PS ACR-F (dB)	15.8	15.6	18.0	17.6
Freq. (MHz)	1.4	2.0	233.5	232.0
Limit (dB)	58.4	55.2	13.8	13.9

N/A	MAIN	SR	MAIN	SR
Worst Pair	12-45	36-78	12-45	36-45
ACR-N (dB)	10.3	8.1	17.1	15.3
Freq. (MHz)	145.5	66.8	250.0	242.0
Limit (dB)	16.3	29.8	4.2	5.0
Worst Pair	12	78	12	45
PS ACR-N (dB)	11.7	10.4	16.9	17.2
Freq. (MHz)	145.5	66.8	248.0	245.5
Limit (dB)	13.8	27.3	1.8	2.1

PASS	MAIN	SR	MAIN	SR
Worst Pair	78	36	45	45
RL (dB)	7.0	6.5	13.5	11.9
Freq. (MHz)	5.4	5.5	241.0	245.0
Limit (dB)	21.0	21.0	10.2	10.1

Compliant Network Standards:

10BASE-T	100BASE-TX	100BASE-T4
1000BASE-T	2.5GBASE-T	5GBASE-T
ATM-25	ATM-51	ATM-155
100VG-AnyLan	TR-4	TR-16 Active
TR-16 Passive		