



### Cable ID: 9-PATCH-UTP-CAT6-PVC-CM-63.7m

Test Limit: TIA Cat 6 Perm. Link (+All)

Limits Version: V7.5

Date / Time: 02/25/2021 02:15:28 PM

Headroom 6.9 dB (NEXT 4,5-7,8)

Cable Type: Cat 6 U/UTP

NVP: 69.0%

Main: Versiv

S/N: 2044074

Software Version: V6.5 Build 5

Calibration Date: 02/24/2021

Adapter: DSX-8000 (DSX-PLA804)

S/N: 21049959

### Test Summary: PASS

Remote: Versiv

S/N: 2039444

Software Version: V6.5 Build 5

Calibration Date: 02/24/2021

Adapter: DSX-8000R (DSX-PLA804)

S/N: 21049956

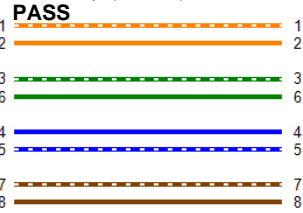
Length (ft), Limit 295	[Pair 7,8]	209
Prop. Delay (ns), Limit 498	[Pair 3,6]	321
Delay Skew (ns), Limit 44	[Pair 3,6]	13
Resistance (ohms), Limit 21.00	[Pair 3,6]	10.76
Resist. Unbal. (ohms), Limit 0.310	[Pair 1,2]	0.069
Resist. P2P Unbal. (ohms), Limit 0.370	[Pair 3,6-7,8]	0.087
Insertion Loss Margin (dB)	[Pair 7,8]	5.7
Frequency (MHz)	[Pair 7,8]	250.0
Limit (dB)	[Pair 7,8]	31.1



209 ft

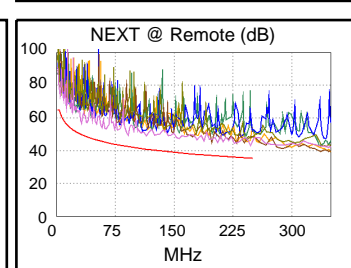
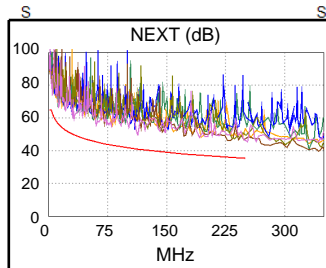


Wire Map (T568B)

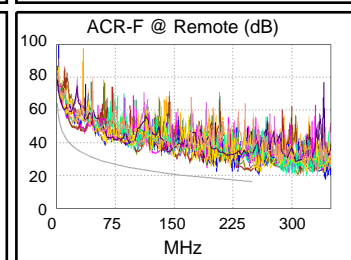
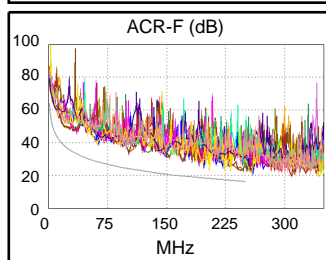


Worst Case Margin Worst Case Value

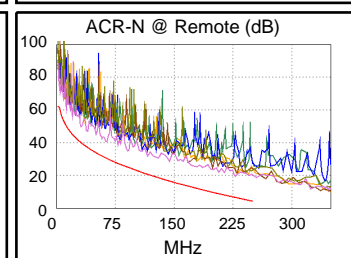
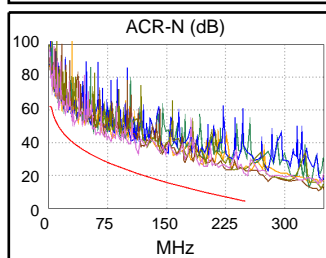
PASS	MAIN	SR	MAIN	SR
Worst Pair	4,5-7,8	4,5-7,8	3,6-4,5	4,5-7,8
<b>NEXT (dB)</b>	8.7	6.9	10.3	7.8
Freq. (MHz)	113.0	32.0	249.5	247.5
Limit (dB)	41.0	49.8	35.4	35.4
Worst Pair	3,6	7,8	3,6	3,6
<b>PS NEXT (dB)</b>	9.7	7.5	9.7	7.7
Freq. (MHz)	233.0	115.0	233.0	230.0
Limit (dB)	33.2	38.3	33.2	33.3



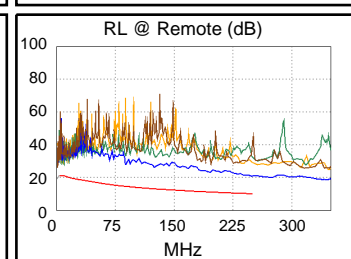
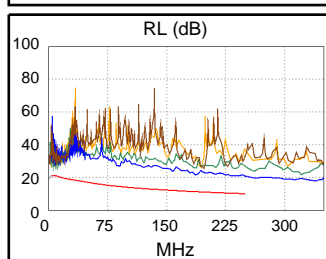
PASS	MAIN	SR	MAIN	SR
Worst Pair	3,6-4,5	4,5-3,6	3,6-4,5	4,5-3,6
<b>ACR-F (dB)</b>	6.6	6.1	6.6	6.1
Freq. (MHz)	248.0	248.0	248.0	248.0
Limit (dB)	16.3	16.3	16.3	16.3
Worst Pair	4,5	3,6	4,5	3,6
<b>PS ACR-F (dB)</b>	7.6	8.3	7.6	8.4
Freq. (MHz)	247.5	240.5	247.5	241.0
Limit (dB)	13.3	13.6	13.3	13.5



N/A	MAIN	SR	MAIN	SR
Worst Pair	4,5-7,8	4,5-7,8	4,5-7,8	4,5-7,8
<b>ACR-N (dB)</b>	10.8	8.4	17.2	13.5
Freq. (MHz)	12.9	32.0	250.0	247.5
Limit (dB)	49.8	39.7	4.2	4.5
Worst Pair	4,5	4,5	3,6	7,8
<b>PS ACR-N (dB)</b>	11.7	10.5	17.0	14.8
Freq. (MHz)	12.8	32.0	249.0	247.0
Limit (dB)	47.5	37.3	1.7	1.9



PASS	MAIN	SR	MAIN	SR
Worst Pair	3,6	3,6	4,5	4,5
<b>RL (dB)</b>	6.2	8.7	10.8	10.7
Freq. (MHz)	5.5	8.4	250.0	250.0
Limit (dB)	21.0	21.0	10.0	10.0



Compliant Network Standards:

10BASE-T	100BASE-TX	100BASE-T4
1000BASE-T	2.5GBASE-T	5GBASE-T
ATM-25	ATM-155	ATM-155
100VG-AnyLan	TR-4	TR-16 Active
TR-16 Passive		



**Cable ID: 9-PATCH-UTP-CAT6-PVC-CM-63.7m**

Test Limit: TIA Cat 6 Perm. Link (+All)

Limits Version: V7.5

Date / Time: 02/25/2021 02:15:28 PM

Headroom 6.9 dB (NEXT 4,5-7,8)

Cable Type: Cat 6 U/UTP

NVP: 69.0%

Main: Versiv

S/N: 2044074

Software Version: V6.5 Build 5

Calibration Date: 02/24/2021

Adapter: DSX-8000 (DSX-PLA804)

S/N: 21049959

**Test Summary: PASS**

Remote: Versiv

S/N: 2039444

Software Version: V6.5 Build 5

Calibration Date: 02/24/2021

Adapter: DSX-8000R (DSX-PLA804)

S/N: 21049956

	Worst Case Margin		Worst Case Value	
	MAIN	SR	MAIN	SR
<b>PASS</b>				
Worst Pair	3,6	3,6	3,6	3,6
<b>TCL (dB)</b>	5.2	5.1	5.3	5.1
Freq. (MHz)	204.0	205.0	204.5	205.0
Limit (dB)	15.4	15.3	15.3	15.3
<b>N/A</b>				
Worst Pair			1,2-3,6	1,2-3,6
<b>CDNEXT (dB)</b>			19.1	19.1
Freq. (MHz)			334.0	328.0
Limit (dB)				
<b>N/A</b>				
Worst Pair			3,6	3,6
<b>CMRL (dB)</b>			4.8	4.9
Freq. (MHz)			286.0	296.0
Limit (dB)				
<b>PASS</b>				
Worst Pair	1,2	1,2	3,6	1,2
<b>ELTCTL (dB)</b>	23.4	20.6	33.4	30.9
Freq. (MHz)	1.0	1.0	30.0	25.8
Limit (dB)	30.0	30.0	0.5	1.8

