



Cable ID: CAT6-SFTP-4FT

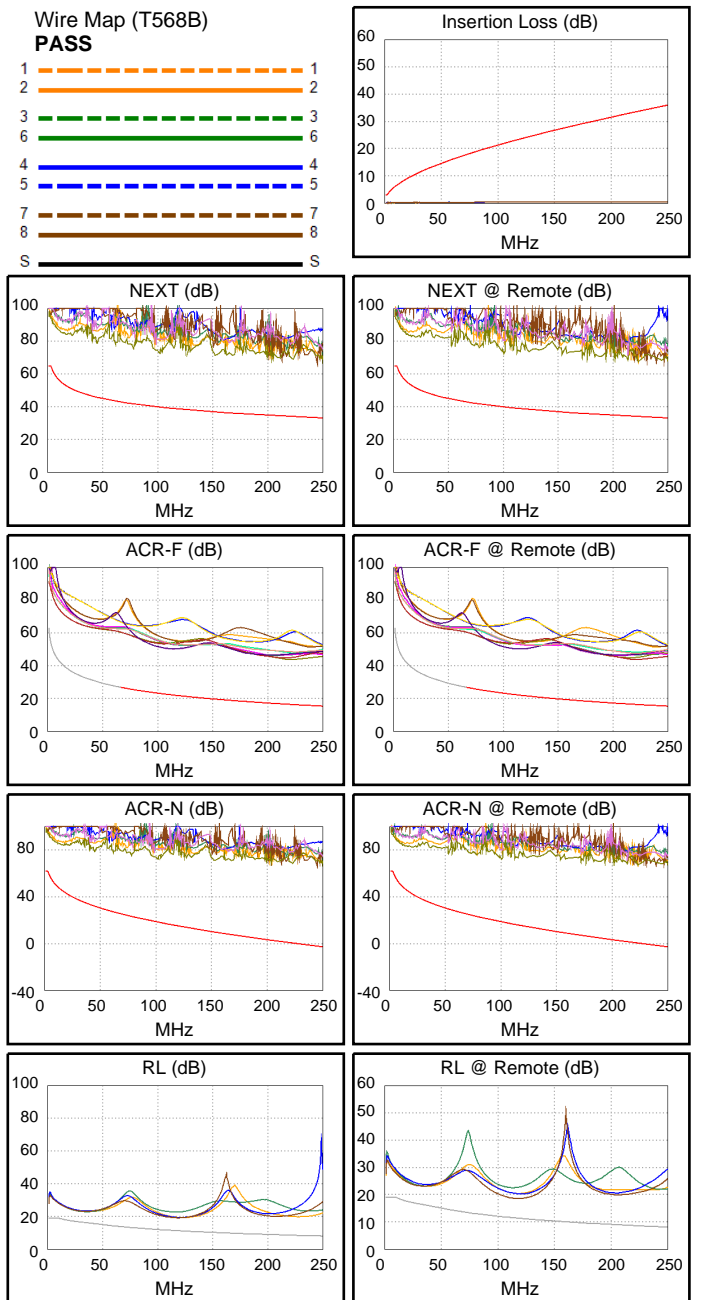
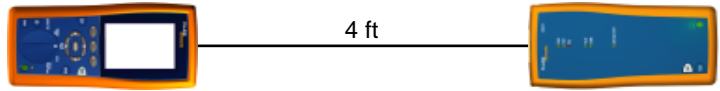
Date / Time: 11/09/2018 11:48:10 AM
Headroom 26.8 dB (NEXT 36-78)
Test Limit: TIA Cat 6 Channel
 Cable Type: Cat 6 S/FTP
 NVP: 70.0%

Operator: KARIM
 Software Version: 2.7800
 Limits Version: 1.9500
 Calibration Date:
 Main (Tester): 11/01/2016
 Remote (Tester): 11/01/2016

Test Summary: PASS

Model: DTX-1800
 Main S/N: 3178039
 Remote S/N: 3178046
 Main Adapter: DTX-CHA002
 Remote Adapter: DTX-CHA002

Length (ft), Limit 328	[Pair 12]	4
Prop. Delay (ns), Limit 555	[Pair 12]	5
Delay Skew (ns), Limit 50	[Pair 12]	0
Resistance (ohms)	[Pair 12]	0.5
Insertion Loss Margin (dB)	[Pair 12]	35.5
Frequency (MHz)	[Pair 12]	250.0
Limit (dB)	[Pair 12]	35.9



Worst Case Margin Worst Case Value

PASS	MAIN	SR	MAIN	SR
Worst Pair	36-78	36-78	36-45	36-45
NEXT (dB)	27.7	26.8	33.1	33.7
Freq. (MHz)	3.1	3.9	245.0	239.5
Limit (dB)	64.8	63.3	33.3	33.4
Worst Pair	36	36	36	36
PS NEXT (dB)	27.8	26.7	34.1	33.7
Freq. (MHz)	3.3	3.9	245.0	223.0
Limit (dB)	62.0	60.8	30.3	31.0

PASS	MAIN	SR	MAIN	SR
Worst Pair	36-45	45-36	36-45	45-36
ACR-F (dB)	27.4	27.4	27.4	27.4
Freq. (MHz)	216.0	216.0	218.0	218.0
Limit (dB)	16.6	16.6	16.5	16.5
Worst Pair	45	45	45	45
PS ACR-F (dB)	27.5	27.7	27.6	27.7
Freq. (MHz)	209.0	205.5	214.0	209.5
Limit (dB)	13.9	14.0	13.6	13.8

N/A	MAIN	SR	MAIN	SR
Worst Pair	36-78	36-78	36-45	36-45
ACR-N (dB)	31.2	30.7	68.3	68.3
Freq. (MHz)	3.1	3.9	245.0	239.5
Limit (dB)	61.2	59.3	-2.3	-1.6
Worst Pair	36	36	36	36
PS ACR-N (dB)	31.4	30.7	69.2	66.9
Freq. (MHz)	3.3	3.9	245.0	223.0
Limit (dB)	58.4	56.8	-5.2	-2.6

N/A	MAIN	SR	MAIN	SR
Worst Pair	36	78	78	78
RL (dB)	6.4	6.5	7.8	7.2
Freq. (MHz)	29.1	26.6	117.0	119.5
Limit (dB)	16.7	16.9	11.3	11.2

Compliant Network Standards:
 10BASE-T 100BASE-TX 100BASE-T4
 1000BASE-T ATM-25 ATM-51
 ATM-155 100VG-AnyLan TR-4
 TR-16 Active TR-16 Passive